

1959

THE FRASER-REAMS DESCRIPTION

Being situated in Jefferson Township, Logan County, Ohio; being in the village of Zanesfield and being a part of V. M. S. 3137.

Beginning at a stone in the west line of a road formerly known as the Baldwin Mill Road and in South line of E. Lee Penneck's 44.37 acre tract. Thence with the west line of said road  $S37^{\circ}-40' W 161.4$  feet to a corner post at the north east corner of Dorothy F. Teets' 0.50 acre tract; thence with the north line of said 0.50 acre tract  $N77^{\circ}-07' W 216.8$  feet to the center of a tile ditch, passing through an iron at 208.8 feet; thence with the center of the ditch  $N 0^{\circ}-59' W 185.5$  feet; thence  $S71^{\circ}-15' E 330.5$  feet to the place of beginning, passing through an iron at 12.0 feet. The last mentioned course shows up on the village map as being on the North Corporation line.

Being 0.80 of an acre more or less. Surveyed from the east side of a 2.50 acre tract.

*on Plat Book*

*Shirk  
3/10/59*

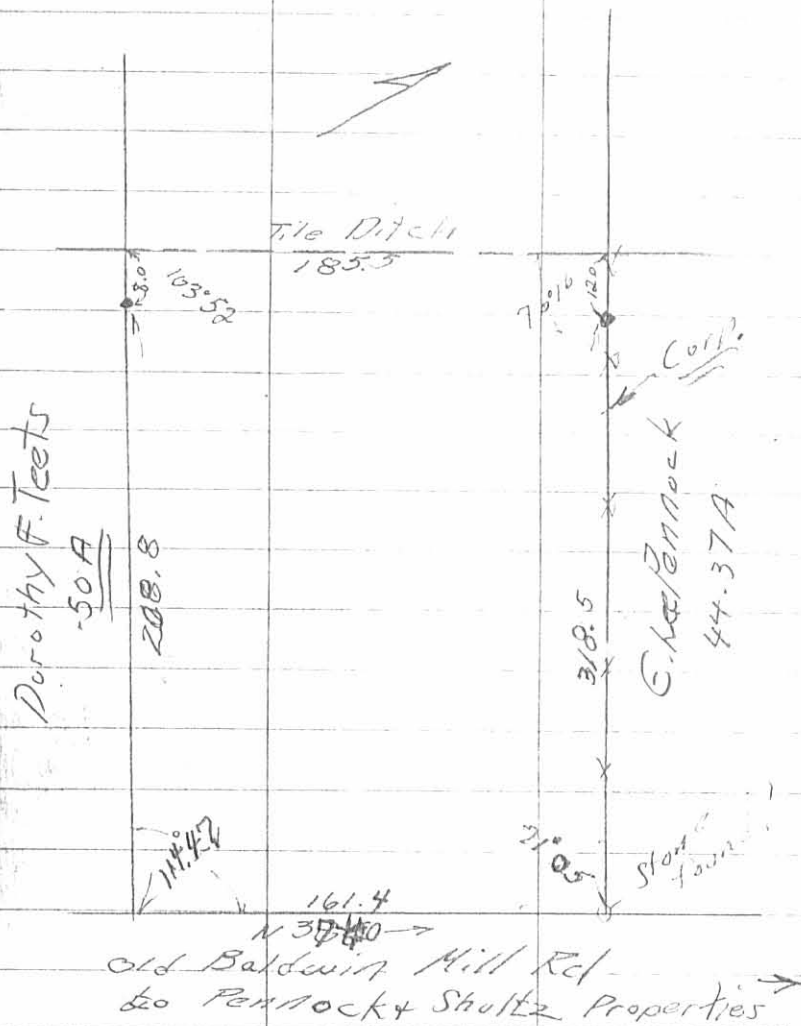
2885 ID

INDEXED ON MAP

FRASER - REAMS  
Zanesfield, Ohio

Mar. 7, 59

50



2883 IP

INDEXED ON MAP

103	-	52
79		16
70		45
115		07
<hr/>		
360		60

O.K.S F.B. #5, P. 50