

Lee Surveying and Mapping Co.



Farm Surveys • Lot Surveys • Topography • Subdivisions • Construction Layout

855 EAST SANDUSKY AVENUE
BELLEFONTAINE, OHIO 43311

(513) 593-5780

CLAYTON M. LEE, P.S.
JEFFREY I. LEE, P.S.

STONER SURVEY

Lying in both V.M.S. 10502 and V.M.S. 9974, Rushcreek Township, Logan County, Ohio.

Being all of Tract 2 and the north part of Tract 1, lying in the name of Robert Stoner as deeded and described in Volume 351, Page 560 of the Logan County Records of Deeds and more particularly described as follows:

Beginning at a corner stone found at the northeast corner of V.M.S. 9974. The same being the southeast corner of V.M.S. 10502 and also being the northeast corner of grantor's Tract 1 (126 acres).

THENCE, with the grantor's east line (East line of V.M.S. 9974), S 5°-41'-05" E, a distance of 673.64 feet to an iron rod.

THENCE, with a fence line extended from the west property line, S 83°-42' W, a distance of 1660.21 feet to an iron rod set on the west line of grantor's 126 acres (Tract 1).

THENCE, with said west line, N 6°-05'-15" W, a distance of 654.41 feet to a corner stone found at the northwest corner of Tract 1 on the line between V.M.S. 9974 and V.M.S. 10502.

THENCE, with said V.M.S. line, S 83°-02'-20" W, a distance of 307.74 feet to the center of a water well. (3 party agreement well, unrecorded). This well situated on a common corner of grantor, D.F. Miracle (Volume 355, Page 980) and F.J. Lenhart (Volume 306, Page 357).

THENCE, with the west line of grantor's Tract 2, N 5°-53'-45" W, a distance of 1726.25 feet to a stone found on the center-line of County Highway 103 at County Highway Station 103+10 (Field Book 582, Page 67).

THENCE, with the center-line of County Highway 103, N 84°-00' E, a distance of 1337.49 feet to a corner stone found marking the northeast corner of grantor's Tract 2.

THENCE, with the east line of said Tract 2, S 5°-39'-45" E, a distance of 1703.97 feet to an iron rod set on the north line of V.M.S. 9974 a distance of 1.5 feet south of a large corner post. This point being the southeast corner of grantor's Tract 2.

THENCE, with the north line of V.M.S. 9974, N 83°-02'-20" E, a distance of 642.10 feet to the point of beginning. Containing 77.867 acres, of which, 25.339 are out of Tract 1 and 52.528 acres are all of Tract 2.

Last previous deed reference: Volume 351, Page 560.



Surveyed by:

Clayton M. Lee
Clayton M. Lee
Reg. Surveyor No. 6181
10-24-80

INDEXED ON MAP

STA. 103+10
 Co. Eng'r. F.B. 582
 Pg. 67

N 84°-00' E

CO. HWY. 103

50'

1337.49

Found cor. stones
 Set iron rods

F.J. LENHART-100 AC., (Vol. 306, Pg. 357)

N 5°-53'-45" W

1726.25

Water Well centered on common corner
 Found broken cor. stone beside well.
 Former owners unrecorded agreement.
 Set reference iron rod 4.38' North.

77.867 ACRES

52.528 AC. (All of Tract 2)
 Vol. 351, Pg. 560

S 5°-39'-45" E

1703.97

C.M. CRAWFORD
 Vol. 311, Pg. 245

SCALE ~ 1" = 400'



V.M.S. 10502

V.M.S. 9991

Set iron rod
 1.5' S. of cor. post

N 83°-02'-20" E

642.10'

Found cor. stone

S 83°-02'-20" W

307.74

Found stone 8" deep
 set iron rod.

V.M.S. 10502

V.M.S. 9974

25.339 AC. (Out of Tract 1)
 Vol. 351, Pg. 560

Set iron rods

S 83°-42' W

1660.21'

Wooded area

Robt. Stoner
 100.661 Ac. remaining

V.M.S. 9974

V.M.S. 9975

S 5°-41'-05" E

673.64'

V.M.S. 9975

ASA COOK, 130.88 AC.
 Vol. 277, Pg. 594

D.F. MIRACLE, 176 AC.
 (Vol. 355, Pg. 980)

**SURVEY OF 77.867 ACRES OUT OF
 THE STONER 178.90 ACRES (Vol. 351, Pg. 560)
 52.528 IN V.M.S. 10502 & 25.339 IN V.M.S. 9974
 RUSHCREEK TWP, LOGAN COUNTY, OHIO**



6579
 IP

INDEXED ON MAP

By:

Clayton M. Lee
 Clayton M. Lee

Reg. Surveyor, 6181

10-24-80

LEE SURVEYING & MAPPING CO.

855 E. Sandusky Ave.
 BELLEFONTAINE, OHIO 43311
 (513) 593-5780

L-764-5

1-7-2025



APPROVED



INNOVATIVE IDEAS
EXCEPTIONAL DESIGN
UNMATCHED CLIENT SERVICE

STONER 27.527 ACRES

Situate in the State of Ohio, Logan County, Rushcreek Township and lying in Virginia Military Survey 10502, and being part of the 52.90 acre tract as conveyed to Sean R. Stoner by deed of record in Official Record 1390, Page 4336, Tract II, (all records referenced herein refer to the Logan County Records of Deeds) and being more particularly described as follows:

COMMENCING at a railroad spike found at Station 103+10 (Logan County Engineer's Field Book 582, Page 63) on the center-line of County Highway 103 (50 feet wide) and being a corner common to said 52.90 acre tract and that 90 acre tract as conveyed to Patton Farms Partnership by deed of record in Official Record 1075, Page 305, Tract No. 1;

Thence, North 83° 44' 26" East 632.77 feet, with said center-line of County Highway 103, to a magnetic nail set at the TRUE POINT OF BEGINNING;

Thence, North 83° 44' 26" East 704.73 feet, with said center-line of County Highway 103, to 1/2 inch rebar found, being a corner common to said 52.90 acre tract and that 114.199 acre tract as conveyed to Jill Kristen Walton-Cronkleton, Co-Trustee and Chad Crawford Walton, Co-Trustee by deed of record in Official Record 1417, Page 2045, Parcel Two;

Thence, South 05° 55' 36" East 1703.84 feet, with the line common to said 52.90 acre and 114.199 acre tracts, passing a 1/2 inch rebar found at a distance of 24.93 feet, to a 1/2 inch rebar found at a corner common to said 52.90 acre and 114.199 acre tracts and being on the north line of that 126 acre tract as conveyed to Sean R. Stoner by deed of record in Official Record 1390, Page 4336, Tract I, and also being a line common to Virginia Military Surveys 10502 and 9974;

Thence South 82° 46' 09" West 698.05 feet, with the line common to said 52.90 acre and 126 acre tracts and said Virginia Military Surveys 10502 and 9974, to a 5/8 inch rebar set on lines common to said 52.90 acre and 126 acre tracts and said Virginia Military Surveys 10502 and 9974;

Thence North 06° 09' 19" West 1715.64 feet, with a new division line through said 52.90 acre tract, passing a 5/8 inch rebar set at a distance of 1690.64 feet, to the TRUE POINT OF BEGINNING.

INDEXED ON MAP
6579

P.O. Box 237, Bellefontaine, OH 43311 | OFFICE 937.593.7335 | ONLINE WWW.DLZ.COM

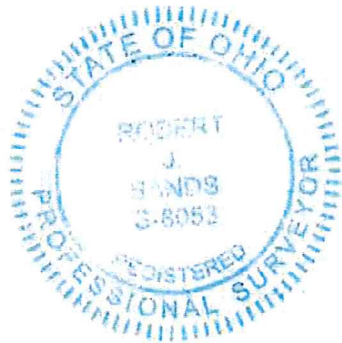
Akron Bellefontaine Bridgeville Burns Harbor Chicago Cincinnati Cleveland Columbus Detroit Flint Fort Wayne Indianapolis Joliet
Kalamazoo Lansing Lexington Louisville Madison Melvindale Munster Muskegon Pittsburgh Port Huron Saint Joseph South Bend Toledo
Waterford

Containing 27.527 acres, more or less, of which 0.404 acre is within the highway right-of-way.

The bearings in the above description are based on the grid bearing of North 83° 44' 26" East for the center-line of County Highway 103, as determined by a GPS network of field observations performed in November, 2024 and are based upon the Ohio State Plane Coordinate System, North Zone, NAD83 (2011).

All rebar set are 5/8 inch in diameter and 30 inches in length, with a yellow cap stamped "DLZ OHIO INC."

I certify that this description is based upon a survey conducted under my direct supervision in November, 2024 and that it and the information contained herein are true and correct to the best of my knowledge.



DLZ Ohio, Inc.

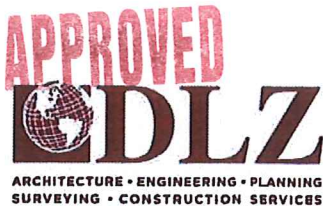
Robert J. Sands 01/07/25

Robert J. Sands
Professional Surveyor No. 8053

2421-6090.00

INDEXED ON MAP
6579

1-7-2025



INNOVATIVE IDEAS
EXCEPTIONAL DESIGN
UNMATCHED CLIENT SERVICE

STONER 25.000 ACRES

Situate in the State of Ohio, Logan County, Rushcreek Township and lying in Virginia Military Survey 10502, and being part of the 52.90 acre tract as conveyed to Sean R. Stoner by deed of record in Official Record 1390, Page 4336, Tract II, (all records referenced herein refer to the Logan County Records of Deeds) and being more particularly described as follows:

BEGINNING at a railroad spike found at Station 103+10 (Logan County Engineer's Field Book 582, Page 63) on the center-line of County Highway 103 (50 feet wide) and being a corner common to said 52.90 acre tract and that 90 acre tract as conveyed to Patton Farms Partnership by deed of record in Official Record 1075, Page 305, Tract No. 1;

Thence, North 83° 44' 26" East 632.77 feet, with said center-line of County Highway 103, to a magnetic nail set;

Thence, South 06° 09' 19" East 1715.64 feet, with a new division line through said 52.90 acre tract, passing a 5/8 inch rebar set at a distance of 25.00 feet, to a 5/8 inch rebar set on the south line of said 52.90 acre tract and the north line of that 126 acre tract as conveyed to Sean R. Stoner by deed of record in Official Record 1390, Page 4336, Tract I, and also being a line common to Virginia Military Surveys 10502 and 9974;

Thence South 82° 46' 09" West 324.95 feet, with the line common to said 52.90 acre and 126 acre tracts and said Virginia Military Surveys 10502 and 9974, to a 3/4 inch rebar found at a corner common to said 126 acre tract and that 176.000 acre tract as conveyed to AJR Farms LLC by deed of record in Official Record 1052, Page 711, Tract IX;

Thence South 82° 46' 51" West 307.93 feet, with the line common to said 52.90 acre and 176.000 acre tracts and said Virginia Military Surveys 10502 and 9974, to a point on a well, being a corner common to said 52.900 acre tract and said 90 acre tract;

Thence North 06° 09' 19" West 1726.31 feet, with the line common to said 52.90 acre and 90 acre tracts, passing a 3/4 inch rebar found at a distance of 4.38 feet and a 5/8 inch rebar set at a distance of 1701.31 feet, to the TRUE POINT OF BEGINNING.

INDEXED ON MAP
6579

P.O. Box 237, Bellefontaine, OH 43311 | OFFICE 937.593.7335 | ONLINE WWW.DLZ.COM

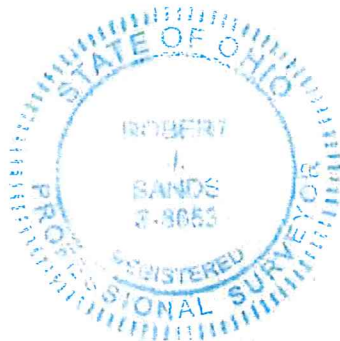
Akron Bellefontaine Bridgeville Burns Harbor Chicago Cincinnati Cleveland Columbus Detroit Flint Fort Wayne Indianapolis Joliet
Kalamazoo Lansing Lexington Louisville Madison Melvindale Munster Muskegon Pittsburgh Port Huron Saint Joseph South Bend Toledo
Waterford

Containing 25.000 acres, more or less, of which 0.363 acre is within the highway right-of-way.

The bearings in the above description are based on the grid bearing of North 83° 44' 26" East for the center-line of County Highway 103, as determined by a GPS network of field observations performed in November, 2024 and are based upon the Ohio State Plane Coordinate System, North Zone, NAD83 (2011).

All rebar set are 5/8 inch in diameter and 30 inches in length, with a yellow cap stamped "DLZ OHIO INC."

I certify that this description is based upon a survey conducted under my direct supervision in November, 2024 and that it and the information contained herein are true and correct to the best of my knowledge.



DLZ Ohio, Inc.

Robert J. Sands 01/07/25

Robert J. Sands
Professional Surveyor No. 8053

2421-6090.00

INDEXED ON MAP
6579

LEGEND:

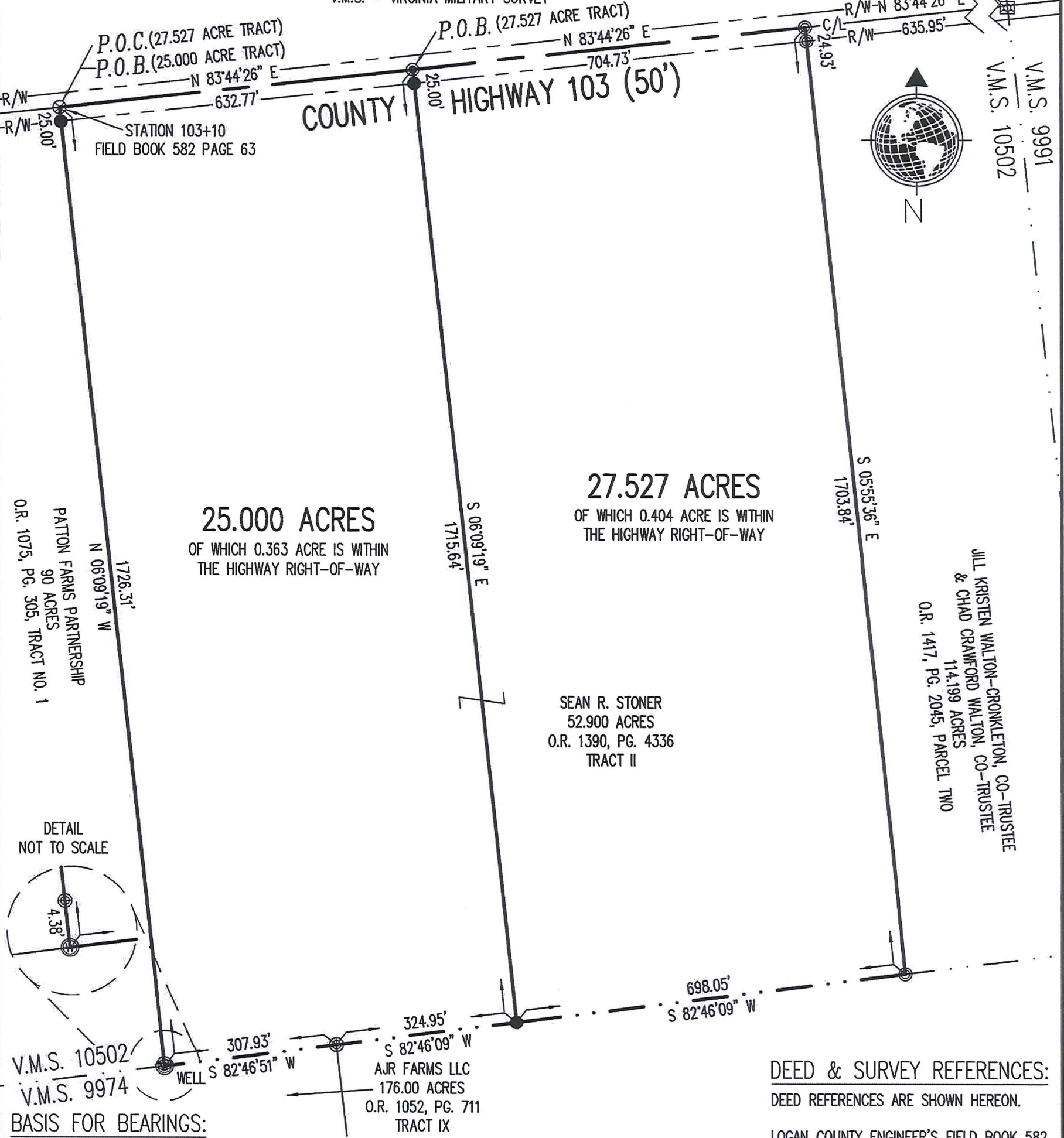
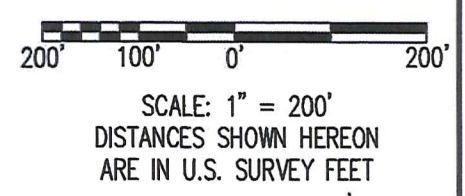
- ☒ STONE FOUND IN MONUMENT BOX
- ⊗ RAILROAD SPIKE FOUND
- ⊕ 3/4 INCH REBAR FOUND
- ⊙ 1/2 INCH REBAR FOUND
- MAGNETIC NAIL SET
- 5/8 INCH BY 30 INCH REBAR SET WITH PLASTIC YELLOW CAP STAMPED "DLZ"

ABBREVIATIONS:

- P.O.B. = POINT OF BEGINNING
- P.O.C. = POINT OF COMMENCEMENT
- R/W = RIGHT-OF-WAY
- C/L = CENTER-LINE
- O.R. = OFFICIAL RECORD
- PG. = PAGE
- V.M.S. = VIRGINIA MILITARY SURVEY

OCCUPATION NOTE:

NO EVIDENCE OF OCCUPATION
ALONG BOUNDARY LINES
UNLESS OTHERWISE SHOWN



BASIS FOR BEARINGS:

BEARINGS AND DISTANCES, SHOWN HEREON, ARE DERIVED FROM GPS OBSERVATIONS BASED ON GRID NORTH, OHIO STATE PLANE COORDINATE SYSTEM, NORTH ZONE, NAD83 (2011, EPOCH 2010), WITH THE CENTER-LINE OF COUNTY HIGHWAY 103, HAVING A BEARING OF N 83°44'26" E.

CERTIFICATION:

THIS PLAT WAS PREPARED BY DLZ OHIO, INC. AND IS A TRUE AND ACCURATE REPRESENTATION, TO THE BEST OF MY KNOWLEDGE AND BELIEF, OF A SURVEY MADE BY THE SAME IN NOVEMBER, 2024.

THIS SURVEY WAS PERFORMED WITHOUT THE BENEFIT OF A TITLE POLICY; ALL OWNERSHIP SHOWN IS BASED UPON RECORD DATA ACQUIRED AT THE TIME OF SURVEY, NO GUARANTEE IS PLACED UPON ACTUAL OWNERSHIP OF ANY PROPERTY.

EASEMENTS MAY EXIST ON SUBJECT PROPERTY THAT WOULD BE REVEALED IN A TITLE EXAMINATION.

Robert J. Sands
ROBERT J. SANDS
PROFESSIONAL SURVEYOR NO. 8053
DATE 01/02/25

INDEXED ON MAP
6579



DEED & SURVEY REFERENCES:

DEED REFERENCES ARE SHOWN HEREON.

LOGAN COUNTY ENGINEER'S FIELD BOOK 582, PAGES 62-68.

LOGAN COUNTY ENGINEER'S MAP ROOM FILES: 200, 1402, 1526, 6579 AND 9651.

SURVEY OF
TWO TRACTS
VIRGINIA MILITARY SURVEY 10502
RUSHCREEK TOWNSHIP
LOGAN COUNTY, OHIO

DLZ
P.O. Box 237 • Bellefontaine, OH 43311
(937) 593-7335 • www.dlz.com
Project #2421-6090.00