

356 beginning containing 4 1/2 acres -

D. Hopkins Co Jan 26

N^o 347

8390

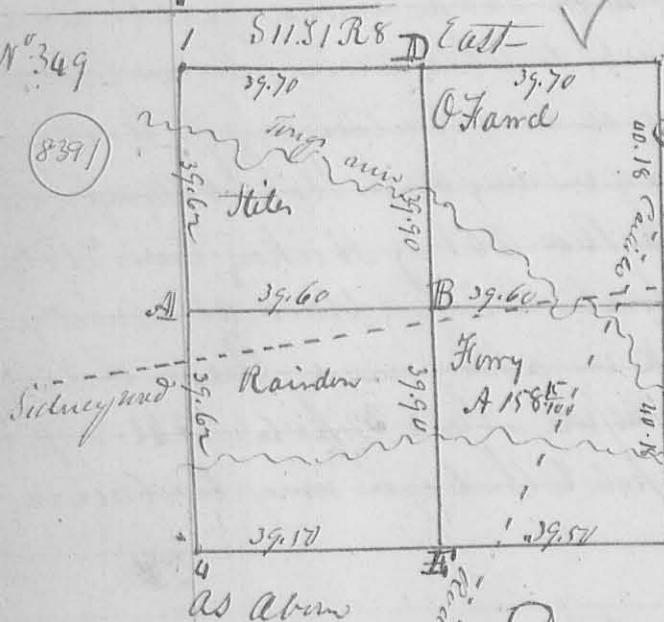
Surveyed Oct 27. 1836 for John Dickson part of M^r Quarter of 18 1/2 R 14 M R 1 as follows Beginning at N.E. Corner of said quarter a Cotton wood 15 L. D beam 188 W 78 links, then N 1/2 W 7 ch 50 links to a stake in a prong, then N 89° W 39 ch 80 links to a white Oak 8 Inches diameter S 43 W 12 L, then N 1/2 W 7 ch 62 links to a stake in a field, then S 89 1/2 E 39 ch. 80 links to the beginning containing 30 acres -

N^o 348

Surveyed Nov. 1. 1836 for John R. Marquis a part of the W. half of the S. E. q^r of 134 1/4 R 14 M R 1 as follows Beginning at the N. E. Corner of said hq^r at a stake at W. Corner to David Cook then West 3 ch 25 links to a stake in the center of the pig road, then with said road S 1/2 W 6 ch. 37 links to a stake, then S 89 1/2 E 25 ch. 25 links to a stake in said Cooks West line, then with said line N 1/2 W 6 ch 37 links to the beginning containing 2 1/2 acres -

N^o 349

8391



the annexed plat represents the survey sub. division in 11 1/2 R 8 E made for the individuals whose names are marked on the plat on Nov. 8. 1836. the original corner N 5° 10' W - the present bearing of the sub. division line as follows ABC N 85 1/2 E. distance as marked on the lines of the plat - EB D N 6° W distance

Description of Corners &c

- 1, 2, 3, 4 the several section corners - for a more particular description see Note -
- A. Forked Becks 20 L D S 86 E 28 Links. E line 18 L D N 86 W 14 Links
 - B Hickory 30 L D N 59 W 6 Links. Same 18 L D S 36 E 36 Links. C. original
 - Corners Wh. O. 36 L D S 86 W 36 Links. Sugar (down) 24. N 63 E 32 Links
 - D Becks 20 L D N 53 W 14 L. Hickory 12 L D S 81 E 6 L original corner