

Lee Surveying and Mapping Co.



CLAYTON M. LEE, P.S.
JEFFREY I. LEE, P.S.

855 East Sandusky Avenue
Bellefontaine, Ohio 43311
Phone 593-5780



Farm Surveys • Lot Surveys • Topography • Subdivisions • Construction Layout

RICHARD HOLDREN SURVEY

Lying in the southeast part of Fractional Section 24, T-5, R-13,
Monroe Township, Logan County, Ohio.

Being a part of that 88.82 acres deeded and described in Volume 339,
Page 82 of the Logan County Records of Deeds. Being more particularly
described as follows:

Beginning at a $\frac{1}{2}$ " iron rod found at the inter-section of the center-
lines of Township Road 30 and County Road 1 (Ludlow Road). This point
being the southeast corner of Fractional Section 24.

THENCE, with the south line of said Section 24 (Center-line of Town-
ship Road 30), S 89°-37'-40" W, a distance of 214.35 feet to a railroad
spike set at the southwest corner of a 0.68 acre tract (Volume 395, Page
736). THE TRUE POINT OF BEGINNING.

THENCE, continuing with the center-line of Township Road 30,
S 89°-37'-40" W, a distance of 415.42 feet to a railroad spike.

THENCE, N 0°-37'-56" W, a distance of 596.42 feet to a 5/8" iron rod.

THENCE, S 89°-16'-30" E, a distance of 422.74 feet to a railroad
spike set on the center-line of Ludlow Road.

THENCE, with said center-line, S 20°-00' E, a distance of 453.76 feet
to a railroad spike set on the northeast corner of aforementioned 0.68
acre tract.

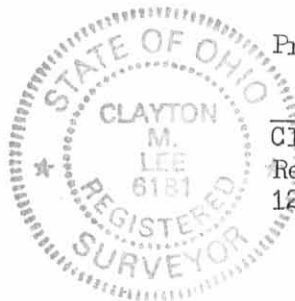
THENCE, with the north line of said 0.68 acre tract, S 83°-48'-28" W,
a distance of 175.03 feet to a 5/8" iron rod set at the northwest corner
of said 0.68 acre.

THENCE, with the west line of said 0.68 acre, S 7°-12'-20" E, a dis-
tance of 144.20 feet to the point of beginning.

Containing 6.461 acres.

7270 ID

INDEXED ON MAP



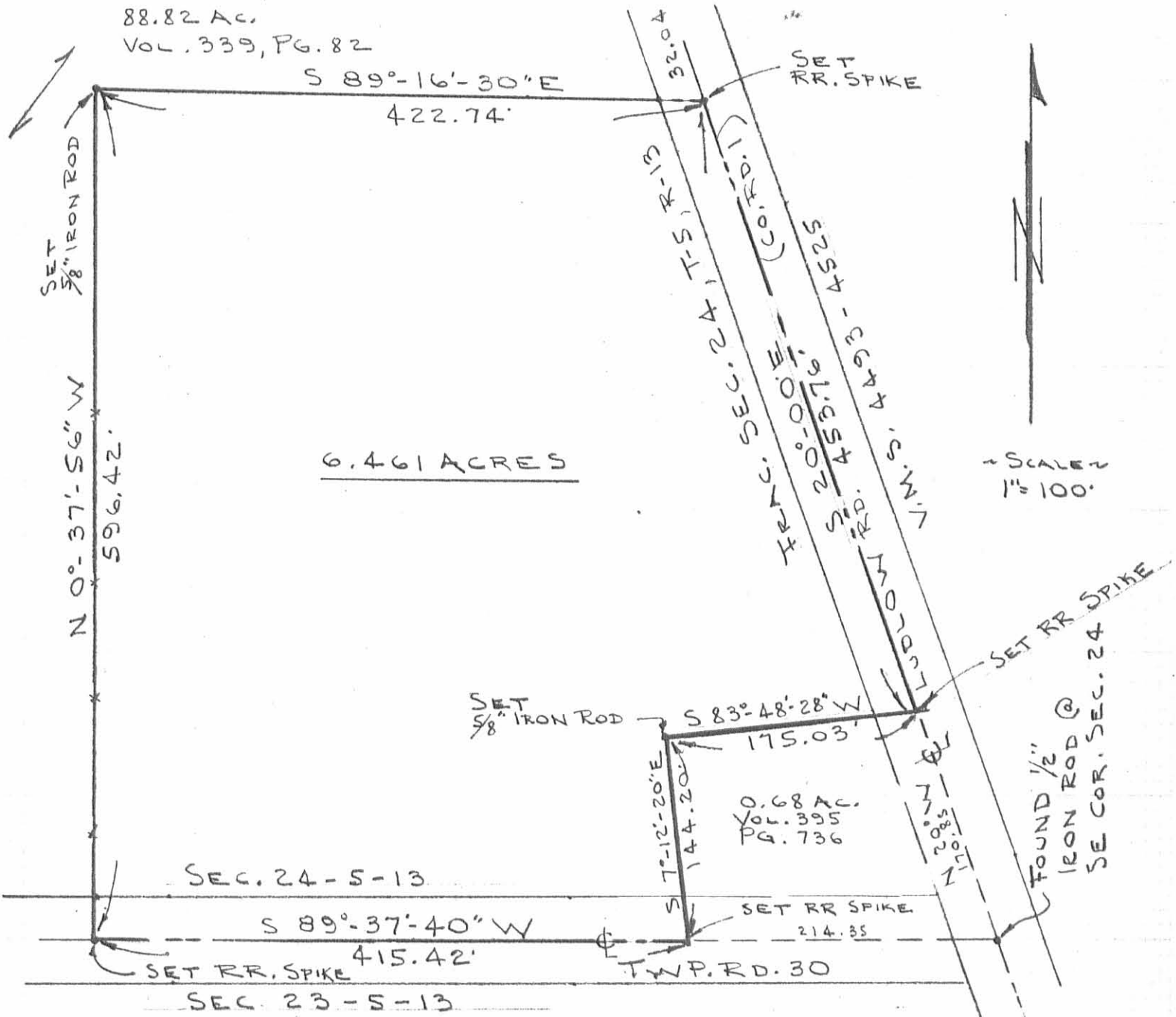
Prepared by:

Clayton M. Lee
Clayton M. Lee
Registered Surveyor No. 6181
12-4-84

ORIGINAL STAMP IN GREEN

L-1217

RICHARD HOLDREN
88.82 AC.
VOL. 339, PG. 82



SURVEY OF 6.461 AC. OUT OF THE SE COR. OF
THE RICHARD HOLDREN 88.82 AC. TRACT (VOL. 339, PG. 82)
SE PART OF FRACTIONAL SEC. 24, T-5, R-13
MONROE TOWNSHIP, LOGAN COUNTY, OHIO



By: *Jeffrey I. Lee*
JEFFREY I. LEE
REG. SURVEYOR 6359
DEC. 3, 1984

7270 IP

ORIGINAL STAMP IN GREEN

INDEXED ON MAP

L-1217-5