

3300  
3286.7  
133

Road 29  
Cont. from pg 44

Hubs set for 60' R/W

Set mon at 33+00

PT 32+36.7 Hubs set

PI 31+79.7 Iron

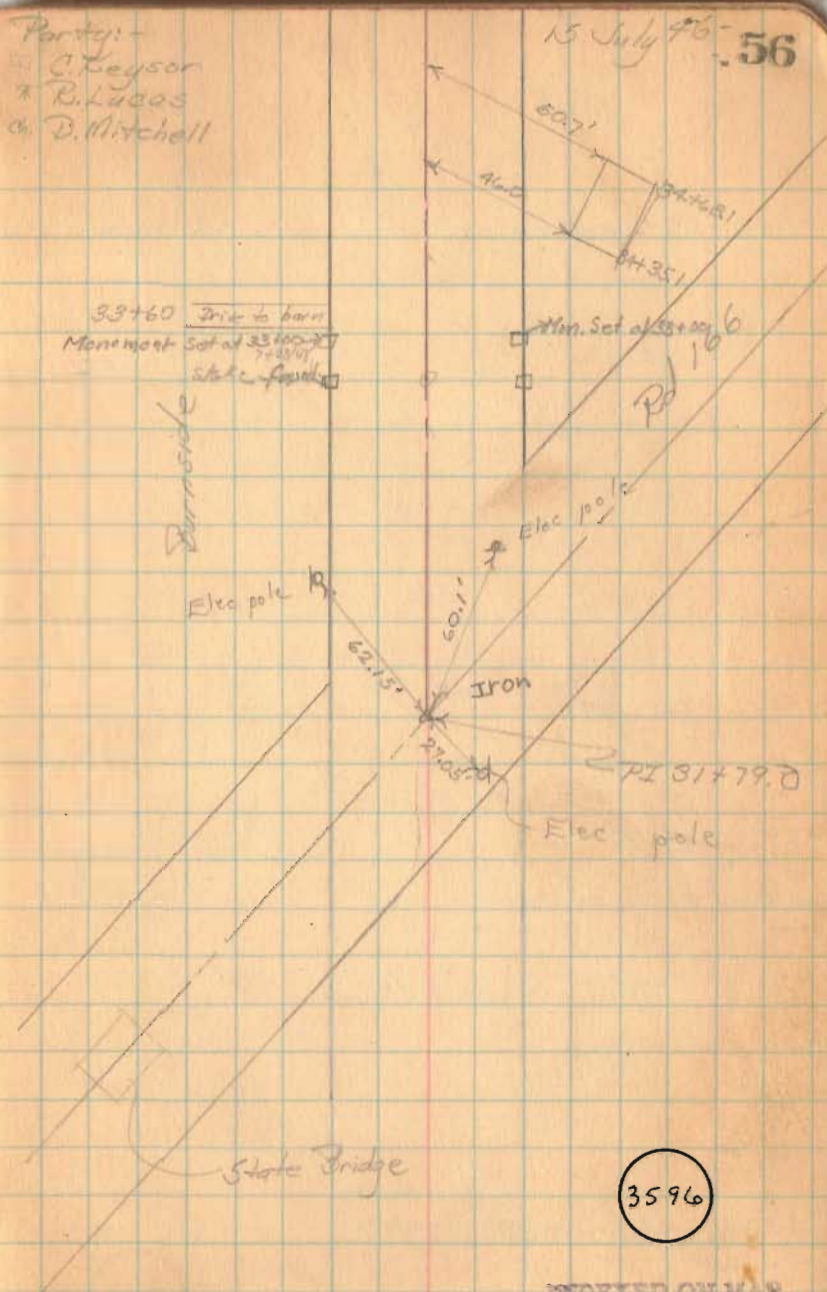
26.7  
25.0  
1.7

Party:-  
C. Keyser  
R. Lucas  
D. Mitchell

15 July 1956

33+60 Drive to barn  
Monument Set at 33+00  
7435/4  
state fence

Burnside



3501  
02567  
2183

Rd 29 (contd)

PT 46+27.55 Hubs set

42+966 Old Mon. at 25'

40+00 Hubs set

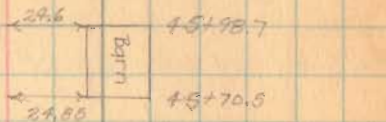
37+966 Old monuments at 25'

35+00 Hubs set

57

Monument Set →

Monument Set 7/21/48



Docs = 48+72



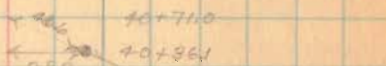
Williams



Burnside

Monument Set →

7/25/48



Monument Set 7/21/48

33+00 drive

Monument Set →

7/19/48



3596

INDEXED ON MAP

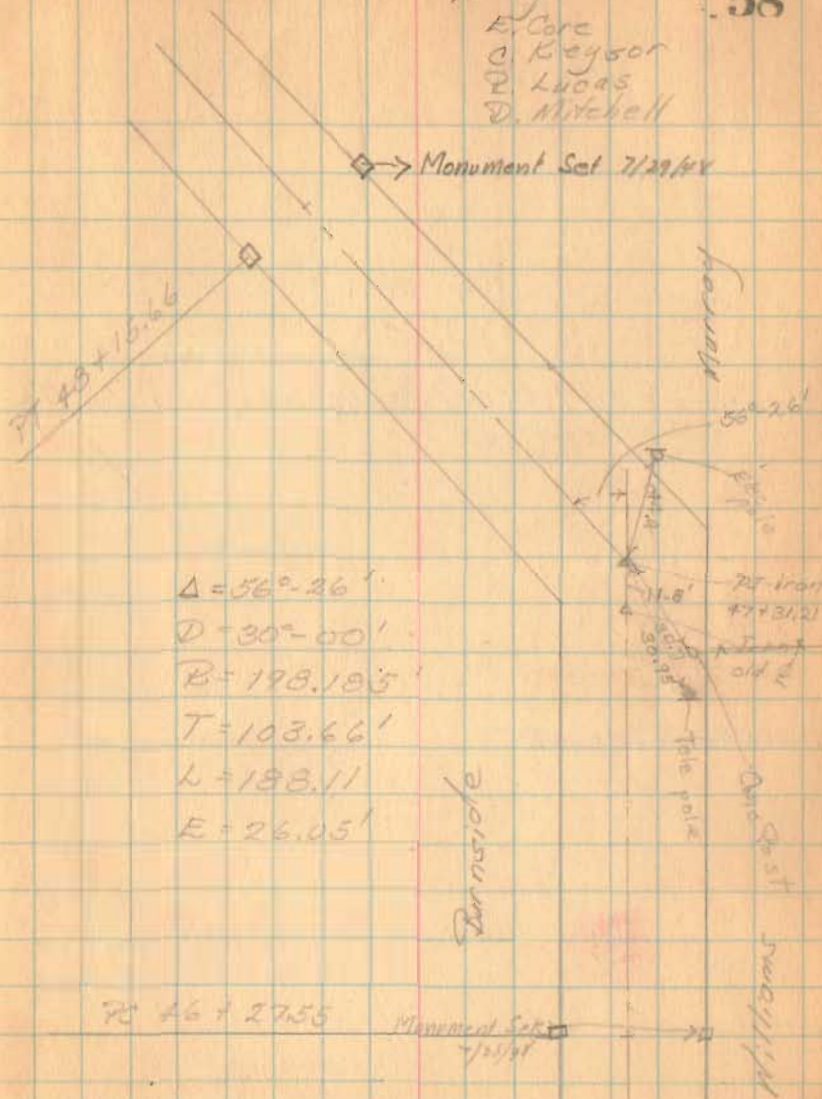
Rd 29 (contd)

PT	Dist	Defl	Total Defl.	
48+15.66	15.66	2°-21'	28°-13'	Hubs set
48+00	100.00	3°-45'	25°-52'	
+75	75.00	3°-45'	22°-07'	
+50	50.00	3°-45'	18°-22'	
+25	-25.00	3°-45'	14°-37'	
47+00	72.45	3°-45'	10°-52'	
+75	47.95	3°-45'	7°-07'	
+50	22.95	3°-22'	3°-22'	

70  
46+27.55 Hubs set

See pg 60 for location  
of piling on inside of  
curve

Party - 15 July 26  
58  
E. Core  
C. Keyser  
P. Lucas  
D. Mitchell



4737.31  
4627.83  
10866

3596

INDEXED ON MAP

Rd 29 cont'd

59

55+605 = 29+78 (old stationing) Iron 13" 41' R

52+00 Hubs set

73+15.66 Hubs set

1935  
2/1/54



Monument Set 760/10

Monument Set 7129/98

Broadside

Murray

3596

INDEXED ON MAP

Monument Set

Pd 29

Contd from pg 59.

Stakes set for 60' B/W

35700 Iron Hubs set Monument Set Right only

32+63 Iron Hubs set Monuments Set

31700 Iron Hubs set Monument Set right only

Lockwood at 30+50  
Burnside

55+60.5 = 29+78 (old stationing) 13° 41' Right  
Hubs set

Monument Set

Monument Set 5/2/48  
Iron 35700  
2° 59' Right

Lockwood

Monument Set 8/1/48

Monument Set  
32+63 Iron  
1° 30' Right

Murray

Monument Set  
31700 Iron  
1° 30' Right

3596

Monument Set 7/29/11

INDEXED ON MAP

30+22.5 30+22.5 Iron Monument Set 7/29/11

Rd 29 (contd)

56+36 Iron No hubs set

57+00 RR spike Hubs set Monuments set

78+00 RR spike Hubs set Monuments set 8/3/48

91+93 Iron Hubs set Monuments set

47+46  
47+24

Monument

Set  
Lane

8/2/48  
Monument  
Set

See pg 87 36 073 73

3608 & 3028

Iron - 56+36

Iron Set up  
8/2/48

Mon. Set. 8/3/48

Monument Set  
Lockwood

42+82  
Ricketts  
41+60  
Lane

C. Ricketts  
Monument Set  
Murray  
Iron 41+43  
82-22' Right



52.15  
36+87

13.5 ft  
Frame

3596

INDEXED ON MAP

Rd 29 (contd)

See Pt 573 pg 13, 14 + 15, 61 + 62

6559.93  
5891.73  
668.00

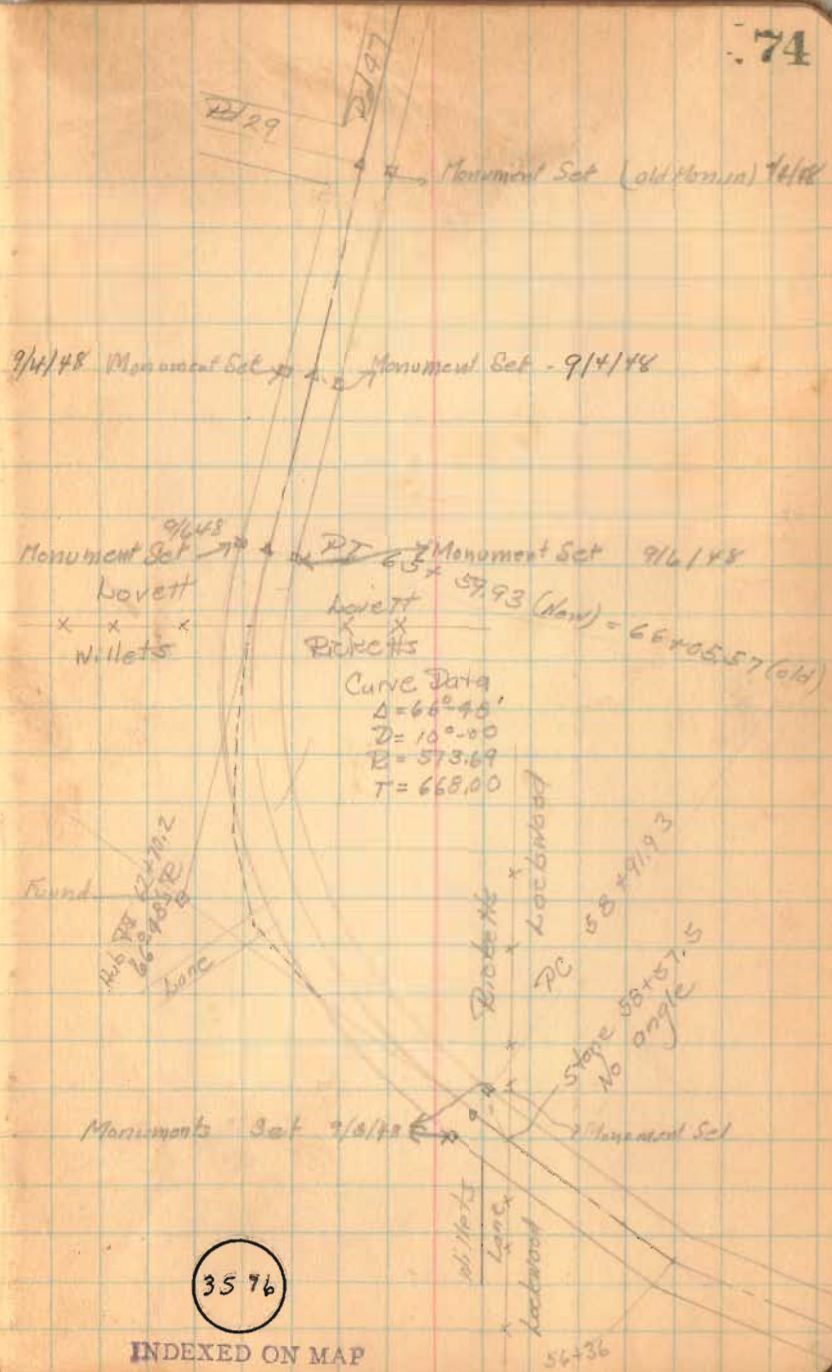
73+44 Iron Hub set right only

72+00 RR spike Hubs set

PC  
65+59.93 (New) = 66+05.57 (old) RR spike - Hubs set

No	Dist	Dist	Total Dist
65+59.93	59.93	1299.79	93°-24'
+25	25	1-15'	31-39"
65+100	100	"	30°-24'
+75	75	"	29°-07'
+50	50	"	27°-59'
+25	25	"	26-39
64+100	100	"	25-24
+75	75	"	24-09
+50	50	"	22-54
+25	25	"	21-39
63+100	100	"	20-24
+75	75	"	19-09
+50	50	"	17-54
+25	25	"	16-39
62+100	100	"	15-24
+75	75	"	14-09
+50	50	"	12-54
+25	25	"	11-39
61+100	100	"	10-24
+75	75	"	9-09
+50	50	"	7-54
+25	25	"	6-39
60+100	100	"	5-24
+75	75	"	4-09
58+150	50	12-15'	2-54
+25	25	"	1-39
59+100	0.07	0°-29.21'	0°-24'

PC  
58+91.93 RR spike Hubs set



3576