

RECID 1-23-08 SWY/AL

# Lee Surveying and Mapping Co., Inc.

Land Surveys • Topography • Subdivisions • Construction Layout

117 N. Madriver St.  
Bellefontaine OH 43311



Phone: (937) 593-7335  
Fax: (937) 593-7444

## GRYTKO 2.121 ACRES

Lying in Virginia Military Survey 3139, Jefferson Township, Logan County, Ohio.

Being out of the Ruth E. Grytko 104.08 acre tract as deeded and described in Official Record 890, Page 69, of the Logan County Record of Deeds and being more particularly described as follows:

Commencing at a railroad spike found at the intersection of center-lines of County Highway 2 (50 feet wide) and County Highway 5 (60 feet wide).

THENCE, with the center-line of County Highway 5, the following three courses:

N 45°-57'-14"E, a distance 59.50 feet to a 3/4 inch iron pipe found.

N 22°-44'-31"E, a distance of 483.96 feet to a 1 Inch square iron bolt found.

N 33°-39'-52"E, a distance of 208.78 feet to a MAG nail found.

THENCE, with the north line of the Jill L. McKellop and Terry J. McKellop 4.775 acre tract (O.R. 400, Pg. 249), S 61°-49'-09"E, a distance of 399.76 feet to a 5/8 inch iron rod set at THE TRUE POINT OF BEGINNING, passing a 5/8 inch iron rod found at 30.14 feet.

THENCE, N 33°-41'-12"E, a distance of 376.05 feet to a 5/8 inch iron rod set.

THENCE, S 29°-05'-47"E, a distance of 338.01 feet to a 5/8 inch iron rod found.

THENCE, with a west line of the Michael J. Wiseman 5.00 acre tract (O.R. 345, Pg. 563) S 21°-41'-43"W, a distance of 211.83 feet to a 5/8 inch iron rod found.

THENCE, with the north line of the aforesaid 4.775 acre tract, the following two courses:

N 58°-31'-51"W, a distance of 329.17 feet to a 5/8 inch iron rod found.

N 61°-49'-09"W, a distance of 15.75 feet to the point of beginning.

Containing 2.121 acres.

The basis for bearings is the north line of said McKellop 4.775 acre tract, being S 61°-49'-09"E, and all other bearings are from angles and distances measured in a field survey by Lee Surveying and Mapping Co., Inc. on January 22, 2008.



ORIGINAL STAMP IN GREEN

Description prepared by:

William K. Bruce  
Professional Surveyor 7437  
January 22, 2008

L-110018



REC'D 1-23-08 S.M.B.K.

2 WORKING DAYS  
**BEFORE YOU DIG**  
CALL TOLL FREE **800-362-2764**  
OHIO UTILITIES PROTECTION SERVICE.

LEGEND

- 5/8 INCH IRON ROD SET
- 5/8 INCH IRON ROD FOUND
- ⊗ MAG NAIL FOUND
- 1 INCH SQUARE IRON BOLT FOUND
- ⊙ 3/4 INCH IRON PIPE FOUND
- ⊗ RAILROAD SPIKE FOUND

COUNTY HIGHWAY 5 (60')

483.96'  
N 22°44'31" E

COUNTY HIGHWAY 2 (50')

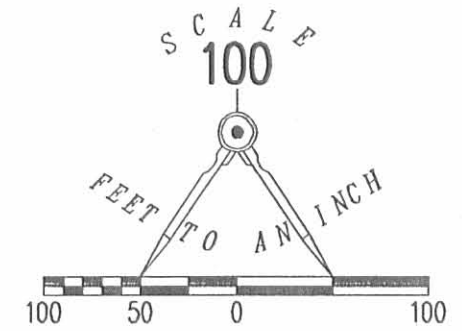
RUTH E. GRYTKO  
104.08 ACRE TRACT  
O.R. 890, PG. 69

JILL L. MCKELLOP AND TERRY J. MCKELLOP  
4.775 ACRE TRACT  
O.R. 400, PG. 429

MICHAEL J. WISEMAN  
5.00 ACRE TRACT  
O.R. 345, PG. 563

A SURVEY OF A 2.121 ACRE TRACT OUT OF THE  
RUTH E. GRYTKO  
104.08 ACRE TRACT  
OFFICIAL RECORD 890, PAGE 69  
VIRGINIA MILITARY SURVEY 3139  
JEFFERSON TOWNSHIP  
LOGAN COUNTY, OHIO

2.121 ACRES



ORIGINAL STAMP IN GREEN

SURVEYED BY:

*William K. Bruce*  
WILLIAM K. BRUCE  
PROFESSIONAL SURVEYOR 7437  
JANUARY 22, 2008

COPYRIGHT 2008 BY:  
LEE SURVEYING & MAPPING CO., INC.  
117 North Madriver Street  
BELLEFONTAINE, OHIO 43311  
(937) 593-7335  
surveys@lsmcinc.us

ADW D0108 110018 L-110018-3

INDEXED ON MAP  
5557 IP



REC'D 1-6-99 JMY ok

# Lee Surveying and Mapping Co., Inc.



Land Surveys • Topography • Subdivisions • Construction Layout

117 N. Madriver Street  
Bellefontaine OH 43311

Phone: (937) 593-7335  
Fax: (937) 593-7444

## GRYTKO 4.775 ACRES

Lying in Virginia Military Survey 3139, Jefferson Township, Logan County, Ohio.

Being out of the Carl E. Grytko and Ruth E. Grytko original 119.58 acre tract as deeded and described in Volume 360, Page 163 of the Logan County Records of Deeds and being more particularly described as follows:

Beginning at a railroad spike set at the intersection of the center-lines of County Highway 5 and County Highway 2.

THENCE, with the center-line of County Highway 5, (60 feet wide), the following three (3) courses:

N 45°-57'-14" E, a distance of 59.50 feet to a 3/4 inch iron pipe found.

N 22°-44'-31" E, a distance of 483.96 feet to a 1 inch square bolt found.

N 33°-39'-52" E, a distance of 38.78 feet to a MAG nail set at the TRUE POINT OF BEGINNING.

THENCE, with the center-line of County Highway 5, N 33°-39'-52" E, a distance of 170.00 feet to a MAG nail set.

THENCE, S 61°-49'-10" E, a distance of 415.52 feet to a 5/8 inch iron rod set, passing a 5/8 inch iron rod set at 30.14 feet.

THENCE, S 58°-31'-51" E, a distance of 329.17 feet to a 5/8 inch iron rod set.

THENCE, with the lines of the Michael J. Wiseman 5.00 acre tract, (O.R. 345, Pg. 563) the following four courses:

S 21°-41'-44" W, a distance of 66.07 feet to a 5/8 inch iron rod found.

N 69°-30'-32" W, a distance of 31.16 feet to a 5/8 inch iron rod found.

S 20°-22'-53" W, a distance of 158.51 feet to a 5/8 inch iron rod found.

S 43°-49'-01" W, a distance of 163.94 feet to a railroad spike found on the center-line of County Highway 2, passing a 5/8 inch iron rod found at 120.90 feet.

THENCE, with the center-line of County Highway 2, (50 feet wide), S 79°-24'-00" W, a distance of 236.49 feet to a MAG nail set.

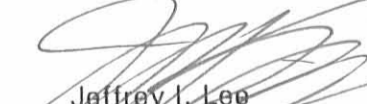
THENCE, N 11°-40'-34" E, a distance of 398.84 feet to a 5/8 inch iron rod set, passing a 5/8 inch iron rod set at 27.02 feet.

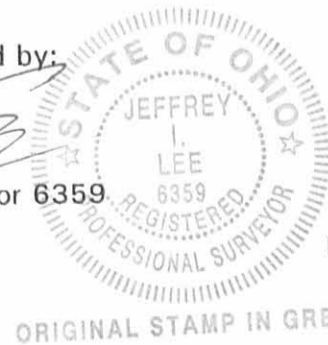
THENCE, N 61°-48'-18" W, a distance of 416.64 feet to the point of beginning, passing a 5/8 inch iron rod set at 386.50 feet.

Containing 4.775 acres, of which 0.260 acre is within the highway rights-of-way.

The basis for bearings is the center-line of County Highway 2, being S 79°-24'-00" W, and all other bearings are from angles and distances measured in a field survey by Lee Surveying and Mapping Co., Inc. on January 5, 1999.

Description prepared by:

  
Jeffrey I. Lee  
Professional Surveyor 6359  
January 5, 1999



L-110

ORIGINAL STAMP IN GREEN

INDICATE ON MAP  
5557 2D-1



DEED 12-31-98 smy AL

# Lee Surveying and Mapping Co., Inc.



Land Surveys • Topography • Subdivisions • Construction Layout

117 N. Madriver Street  
Bellefontaine OH 43311

Phone: (937) 593-7335  
Fax: (937) 593-7444

## GRYTKO 5.725 ACRES

Lying in Virginia Military Survey 3139, Jefferson Township, Logan County, Ohio.

Being out of the Carl E. Grytko and Ruth E. Grytko original 119.58 acre tract as deeded and described in Volume 360, Page 163 of the Logan County Records of Deeds and being more particularly described as follows:

Beginning at a railroad spike set at the intersection of the center-lines of County Highway 5 and County Highway 2.

THENCE, with the center-line of County Highway 5, (60 feet wide), the following three (3) courses:

N 45°-57'-14" E, a distance of 59.50 feet to a 3/4 inch iron pipe found.

N 22°-44'-31" E, a distance of 483.96 feet to a 1 inch square bolt found.

N 33°-39'-52" E, a distance of 38.78 feet to a MAG nail set.

THENCE, S 61°-48'-18" E, a distance of 416.64 feet to a 5/8 inch iron rod set, passing a 5/8 inch iron rod set at 30.14 feet.

THENCE, S 11°-40'-34" W, a distance of 398.84 feet to a MAG nail set on the center-line of County Highway 2, passing a 5/8 inch iron rod set at 371.82 feet.

THENCE, with the center-line of County Highway 2, (50 feet wide), the following three (3) courses:

S 79°-24'-00" W, a distance of 247.07 feet to a 5/8 inch iron rod found.

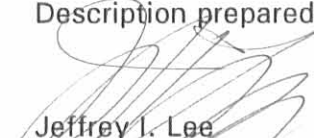
N 84°-12'-19" W, a distance of 124.07 feet to a 5/8 inch iron rod found.

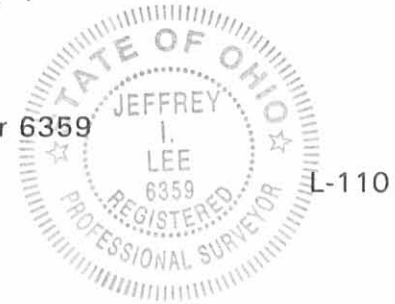
N 59°-40'-04" W, a distance of 198.76 feet the point of beginning.

Containing 5.725 acres, of which 0.706 acre is within the highway rights-of-way.

The basis for bearings is the center-line of County Highway 2 at the southeast corner of the tract, being S 79°-24'-00" W, and all other bearings are from angles and distances measured in a field survey by Lee Surveying and Mapping Co., Inc. on December 28, 1998.

Description prepared by:

  
Jeffrey I. Lee  
Professional Surveyor 6359  
December 30, 1998

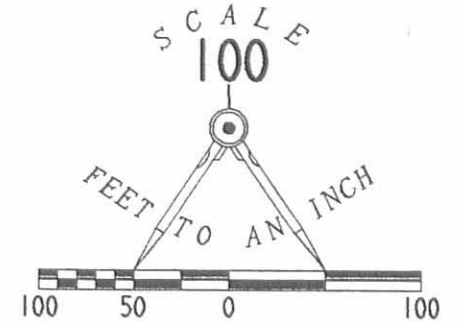


ORIGINAL STAMP IN GREEN

5557 202

**REFERENCES**

LOGAN COUNTY ENGINEER'S FILES:  
FIELD BOOK 579, PAGES 39-52  
X-5B



**LEGEND**

- 5/8" IRON ROD SET
- 5/8" IRON ROD FOUND
- ⊕ RAILROAD SPIKE SET
- ⊗ RAILROAD SPIKE FOUND
- ⊘ MAG NAIL SET
- 1" SQUARE BOLT FOUND
- 3/4" IRON PIPE FOUND
- X- FENCE

CARL E. GRYTKO  
AND RUTH E. GRYTKO  
ORIG. 119.58 ACRES  
VOL. 360, PG. 163

MICHAEL J. WISEMAN  
AND CHERI L. WISEMAN  
5.00 ACRES  
O.R. 345, PG. 563

**5.725 ACRES**  
OF WHICH 0.706 ACRE IS IN  
THE HIGHWAY RIGHT-OF-WAY

**4.775 ACRES**  
OF WHICH 0.260 ACRE IS IN  
THE HIGHWAY RIGHT-OF-WAY

**SURVEY OF TWO TRACTS OUT THE  
CARL E. GRYTKO AND RUTH E. GRYTKO  
ORIGINAL 119.58 ACRE TRACT  
VOLUME 360, PAGE 163  
VIRGINIA MILITARY SURVEY 3139  
JEFFERSON TOWNSHIP  
LOGAN COUNTY, OHIO**



ORIGINAL STAMP IN GREEN

SURVEYED BY:

*Jeffrey L. Lee*  
JEFFREY L. LEE  
PROFESSIONAL SURVEYOR 6359  
DECEMBER 28, 1998

COPYRIGHT 1999 BY:

LEE SURVEYING & MAPPING CO., INC.  
117 North Madriver Street  
BELLEFONTAINE, OHIO 43311  
(937) 593-7335

D 338

L110.GCD

L-110-3

5557 2D

# Lee Surveying and Mapping Co.



Farm Surveys • Lot Surveys • Topography • Subdivisions • Construction Layout

855 EAST SANDUSKY AVENUE  
BELLEFONTAINE, OHIO 43311

(513) 593-5780

CLAYTON M. LEE, P.S.  
JEFFREY I. LEE, P.S.

## CRYTKO SURVEY

Lying in V.M.S. 3139, Jefferson Township, Logan County, Ohio and being out of that 119.58 acre tract deeded and described in Volume 360, Page 163 of the Logan County Records of Deeds and more particularly described as follows:

Beginning at an iron spike set in the center-line of County Road No. 2, a distance easterly along the center-line of said County Road 2, of 808.54 feet from the center-line of County Road No. 5.

THENCE, N 43°-51'-20" E, a distance of 164.08 feet, along a fence to an iron rod, passing an iron rod set in the right-of-way line at 42.97 feet.

THENCE, N 20°-12'-15" E, a distance of 158.62 feet to an iron rod.

THENCE, S 69°-32'-20" E, a distance of 31.30 feet to an iron rod set in a fence line.

THENCE, N 21°-39' E, a distance of 278.78 feet to an iron rod.

THENCE, parallel to said County Road 2, N 79°-24' E, a distance of 346.16 feet to an iron rod.


THENCE, S 2°-57'-20" E, a distance of 455.28 feet to an iron spike set in the center-line of County Road 2, passing an iron rod set in the right-of-way line at 430.07 feet.

THENCE, with said center-line, S 79°-24' W, a distance of 675.89 feet to the point of beginning. Containing 5.00 acres.

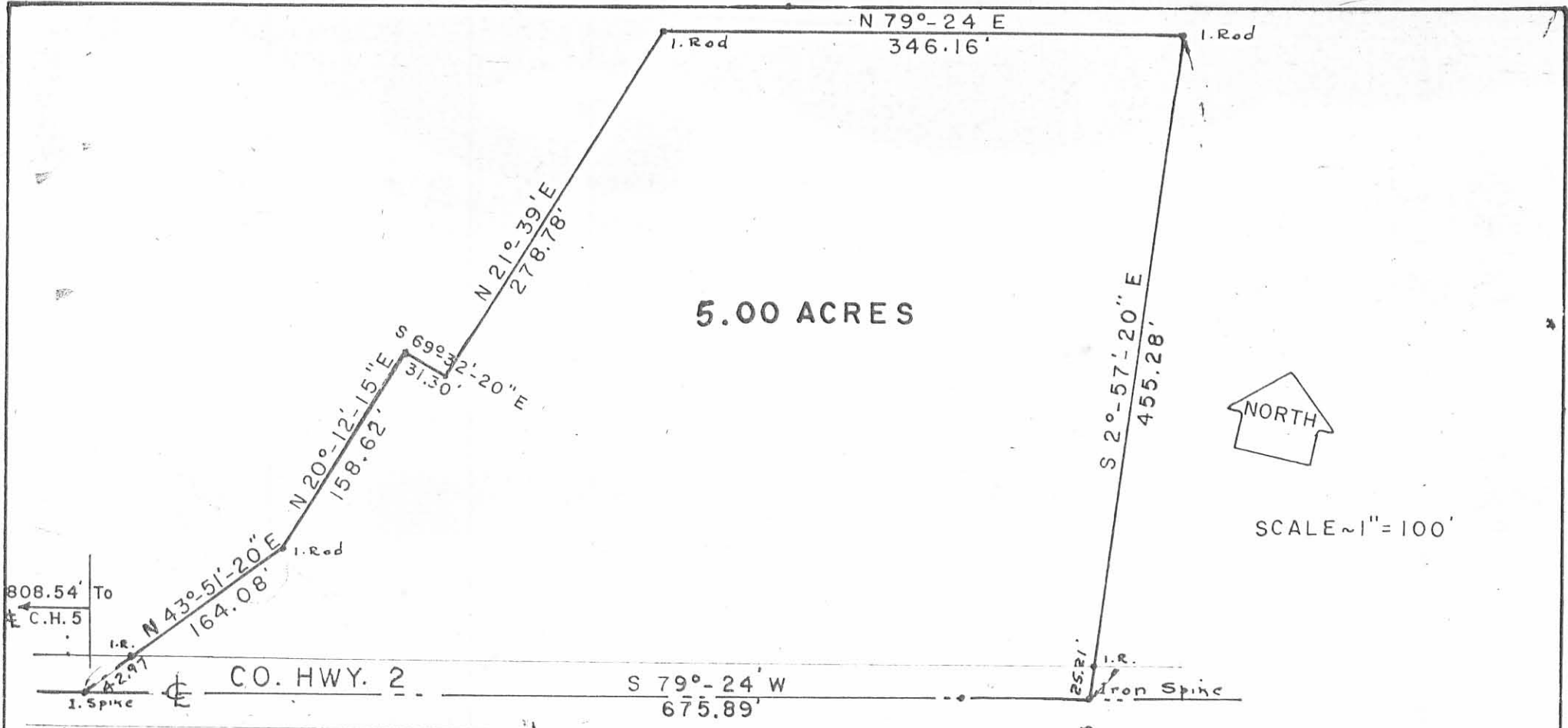
Last previous deed reference: Volume 360, Page 163.

Surveyed by:



  
Clayton M. Lee  
Reg. Surveyor No. 6181  
11-7-77





5.00 ACRES



SCALE ~ 1" = 100'

SURVEY OF 5.00 ACRES OUT OF  
 THE GRYTKO 119.58 TRACT (Vol. 360, Pg. 163)  
 V.M.S. 3139, JEFFERSON TOWNSHIP  
 LOGAN COUNTY, OHIO

Surveyed by:

*Clayton M. Lee*

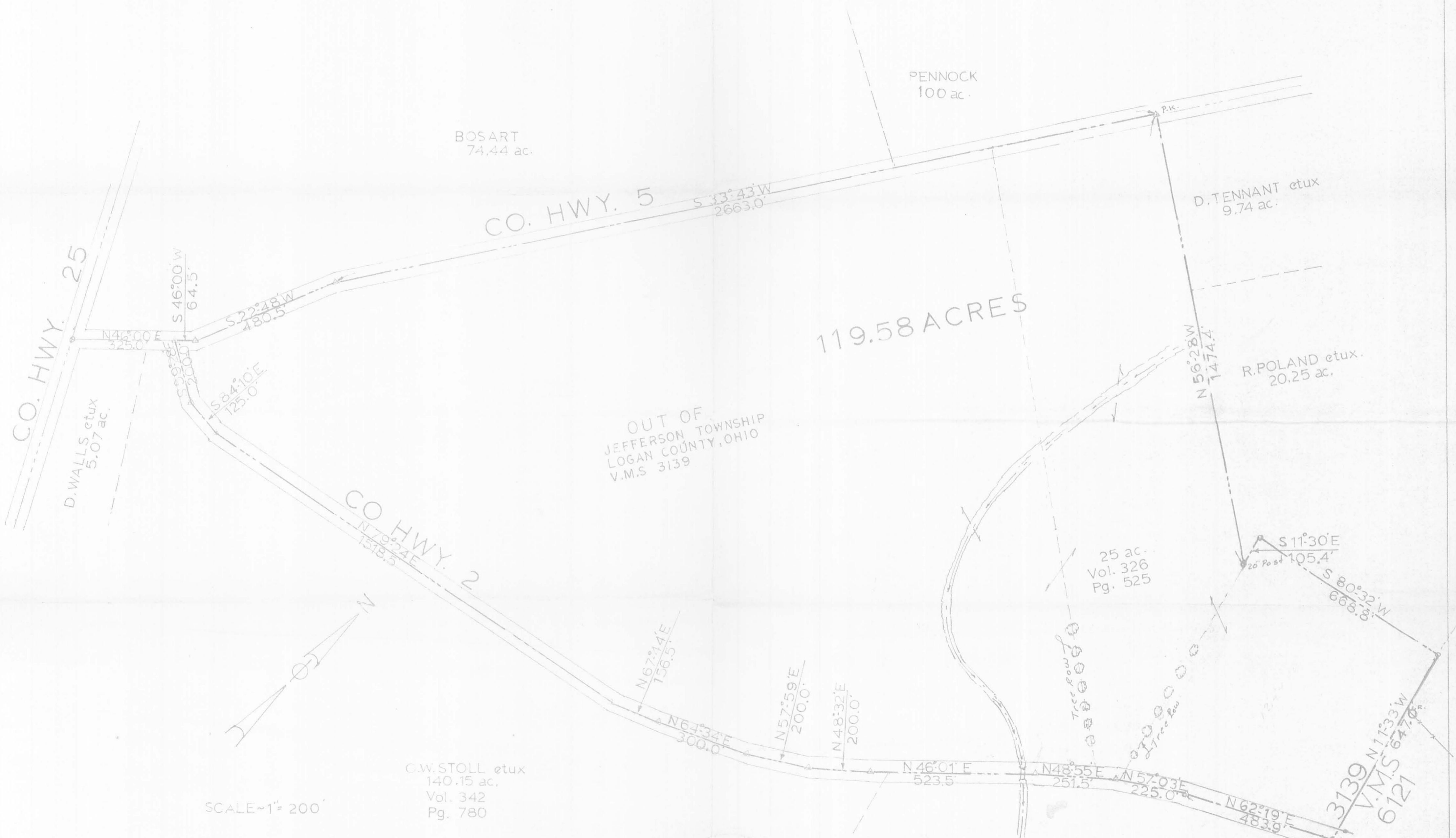
Clayton M. Lee  
 Reg. Surveyor 6181

11-7-77



INDEXED ON MAP  
 5557 3P

Lee Surveying & Mapping Co.  
 855 E. Sandusky Ave.  
 BELLEFONTAINE, OHIO 43311  
 (513) 593-5780



I hereby certify that this map represents  
 a true survey that was made by me.  
*Clayton M. Lee*  
 Clayton M. Lee P.S.  
 Reg. Surveyor No. 6181



INDEXED ON MAP

O.W. STOLL etux  
 VOL. 326  
 PG. 524  
 233.79 ACRES  
 94.58 "  
 139.21 Remaining

V.M.S. 3136  
 V.M.S. 3139  
 V.M.S. 6127





**APPROVED**



INNOVATIVE IDEAS  
EXCEPTIONAL DESIGN  
UNMATCHED CLIENT SERVICE

**GRYTKO  
2.000 ACRES**

Situate in the State of Ohio, Logan County, Jefferson Township and lying in Virginia Military Survey 3139, and being out of the 104.08 acre tract as conveyed to Ruth E. Grytko by deed of record in Official Record 890, Page 69, (all records referenced herein refer to the Logan County Records of Deeds) and being more particularly described as follows:

COMMENCE at a 1 inch square rebar found on the center-line of County Highway 5 (60 feet wide) at angle point Station 8+70 (Logan County Engineer's Field Book 559, Page 42);

Thence North 34° 24' 48" East 708.52 feet, with said center-line, passing a magnetic nail found at a distance of 208.77 feet at a corner common to said 104.08 acre tract and that 4.775 acre tract as conveyed to Jill L. McKellop and Terry J. McKellop by deed of record in Official Record 400, Page 429, to a magnetic nail set, at the TRUE POINT OF BEGINNING.

Thence North 34° 24' 48" East 175.41 feet, with said center-line, to a magnetic nail set;

Thence, with new division lines through said 104.08 acre tract, the following courses:

1. South 55° 49' 24" East 397.96 feet, passing a 5/8 inch rebar set at a distance of 30.00 feet, to a 5/8 inch rebar set;
2. South 34° 26' 29" West 262.48 feet to a 5/8 inch rebar found at a corner common to the remainder of said 104.08 acre and that 2.121 acre tract as conveyed to Jill L. McKellop etal by deed of record in Official Record 912, Page 292;
3. North 43° 28' 01" West 406.90 feet, passing a 5/8 inch iron rebar set at a distance of 376.14 feet, to the TRUE POINT OF BEGINNING.

Containing 2.000 acres, more or less, of which 0.123 acre is within the highway right-of-way.

INDEXED ON MAP  
5557



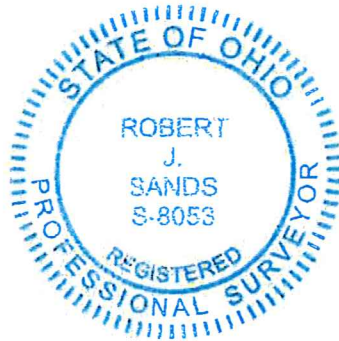
INNOVATIVE IDEAS  
EXCEPTIONAL DESIGN  
UNMATCHED CLIENT SERVICE

The bearings in the above description are based on the grid bearing of North 34° 24' 48" East for the center-line of County Highway 5 as determined by a GPS network of field observations performed in November, 2024 and are based upon the Ohio State Plane Coordinate System, North Zone, NAD83 (2011).

All rebar set are 5/8 inch in diameter and 30 inches in length, with a yellow cap stamped "DLZ OHIO INC."

I certify that this description is based upon a survey conducted under my direct supervision in November, 2024 and that it and the information contained herein are true and correct to the best of my knowledge.

DLZ Ohio, Inc.



*Robert J. Sands* 11/22/24

Robert J. Sands  
Professional Surveyor No. 8053

2421-6085.00

INDEXED ON MAP  
5557



**APPROVED**



INNOVATIVE IDEAS  
EXCEPTIONAL DESIGN  
UNMATCHED CLIENT SERVICE

**GRYTKO  
4.000 ACRES**

Situate in the State of Ohio, Logan County, Jefferson Township and lying in Virginia Military Survey 3139, and being out of the 104.08 acre tract as conveyed to Ruth E. Grytko by deed of record in Official Record 890, Page 69, (all records referenced herein refer to the Logan County Records of Deeds) and being more particularly described as follows:

COMMENCE at a 1 inch square rebar found on the center-line of County Highway 5 (60 feet wide) at angle point Station 8+70 (Logan County Engineer's Field Book 559, Page 42);

Thence North 34° 24' 48" East 208.77 feet, with said center-line, to a magnetic nail found at a corner common to said 104.08 acre tract and that 4.775 acre tract as conveyed to Jill L. McKellop and Terry J. McKellop by deed of record in Official Record 400, Page 429, at the TRUE POINT OF BEGINNING.

Thence North 34° 24' 48" East 499.75 feet, with said center-line, to a magnetic nail set;

Thence South 43° 28' 01" East 406.90 feet, with a new division line through said 104.08 acre tract, passing a 5/8 inch rebar set at a distance of 30.76 feet, to a 5/8 inch rebar found at a corner common to the remainder of said 104.08 acre and that 2.121 acre tract as conveyed to Jill L. McKellop etal by deed of record in Official Record 912, Page 292;

Thence South 34° 26' 29" West 376.40 feet, with the line common to the remainder of said 104.08 acre and 2.121 acre tracts, to a 5/8 inch iron rebar found at a corner of said 104.08 acre tract and the north line of said 4.775 acre tracts;

Thence, North 61° 02' 00" West 399.45 feet, with the line common to said 104.08 acre and 4.775 acre tracts, passing a 5/8 inch rebar found at a distance of 369.42 feet, to the TRUE POINT OF BEGINNING.

Containing 4.000 acres, more or less, of which 0.342 acre is within the highway right-of-way.

The bearings in the above description are based on the grid bearing of North 34° 24' 48" East for the center-line of County Highway 5 as

INDEXED ON MAP  
5557

P.O. Box 237, Bellefontaine, OH 43311 | OFFICE 937.593.7335 | ONLINE WWW.DLZ.COM



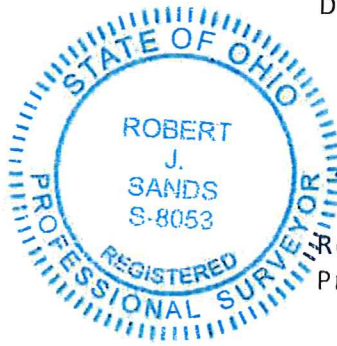
INNOVATIVE IDEAS  
EXCEPTIONAL DESIGN  
UNMATCHED CLIENT SERVICE

determined by a GPS network of field observations performed in November, 2024 and are based upon the Ohio State Plane Coordinate System, North Zone, NAD83 (2011).

All rebar set are 5/8 inch in diameter and 30 inches in length, with a yellow cap stamped "DLZ OHIO INC."

I certify that this description is based upon a survey conducted under my direct supervision in November, 2024 and that it and the information contained herein are true and correct to the best of my knowledge.

DLZ Ohio, Inc.



*Robert J. Sands* 11/22/24

Robert J. Sands  
Professional Surveyor No. 8053

2421-6085.00

INDEXED ON MAP  
5557

11-22-2024

**APPROVED**

**LEGEND:**

- ⊙ MAGNETIC NAIL FOUND
- ⊗ RAILROAD SPIKE FOUND
- ⊙ MAGNETIC NAIL SET
- ▣ 1 INCH SQUARE REBAR FOUND
- 5/8 INCH REBAR FOUND
- 5/8 INCH BY 30 INCH REBAR SET WITH YELLOW I.D. CAP STAMPED "DLZ"

**ABBREVIATIONS:**

- C/L = CENTERLINE
- R/W = RIGHT-OF-WAY
- P.O.C. = POINT OF COMMENCEMENT
- P.O.B. = POINT OF BEGINNING
- O.R. = OFFICIAL RECORD
- PG. PAGE

**DEED & SURVEY REFERENCES:**

DEED REFERENCES ARE SHOWN HEREON.

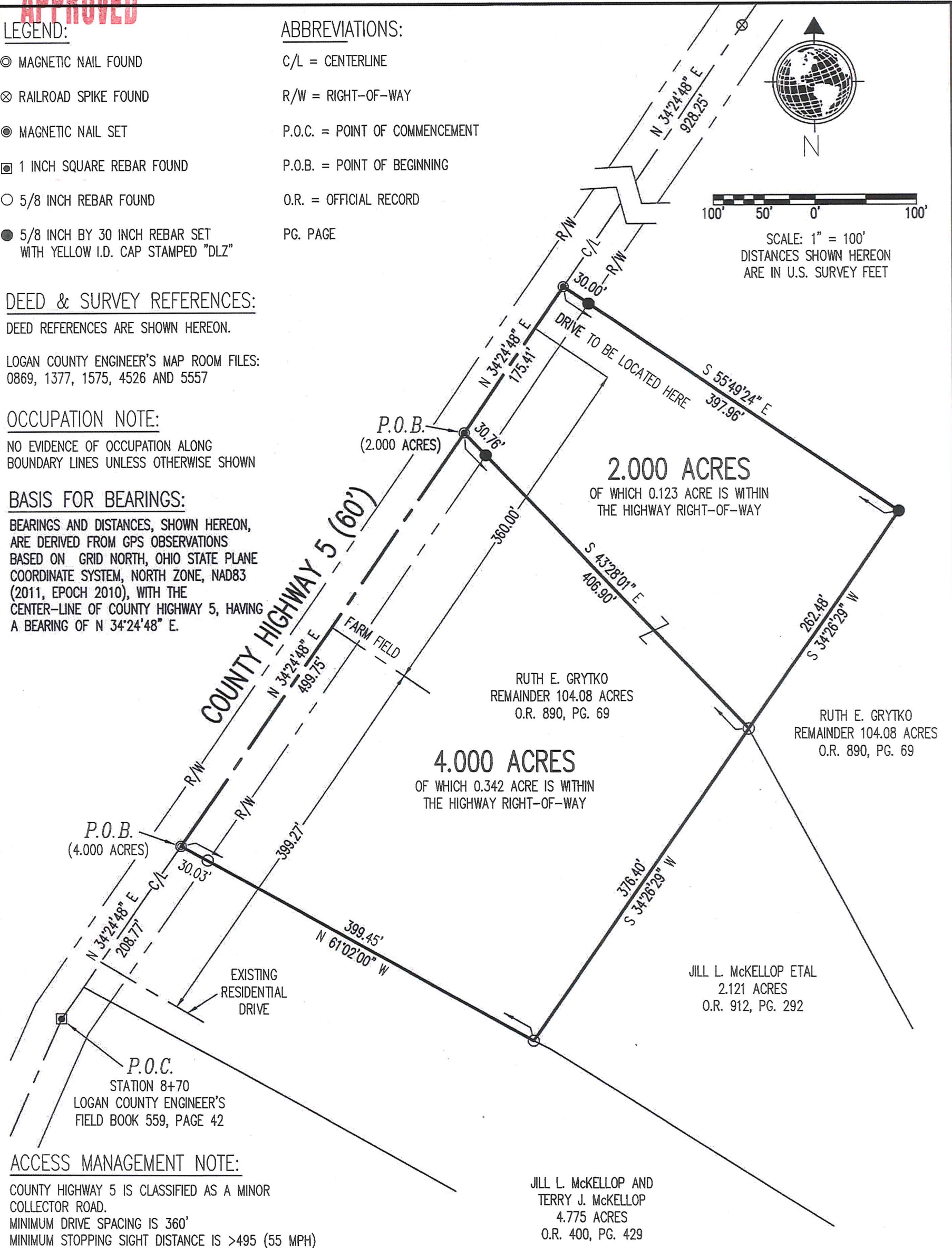
LOGAN COUNTY ENGINEER'S MAP ROOM FILES:  
0869, 1377, 1575, 4526 AND 5557

**OCCUPATION NOTE:**

NO EVIDENCE OF OCCUPATION ALONG BOUNDARY LINES UNLESS OTHERWISE SHOWN

**BASIS FOR BEARINGS:**

BEARINGS AND DISTANCES, SHOWN HEREON, ARE DERIVED FROM GPS OBSERVATIONS BASED ON GRID NORTH, OHIO STATE PLANE COORDINATE SYSTEM, NORTH ZONE, NAD83 (2011, EPOCH 2010), WITH THE CENTER-LINE OF COUNTY HIGHWAY 5, HAVING A BEARING OF N 34°24'48" E.



**ACCESS MANAGEMENT NOTE:**

COUNTY HIGHWAY 5 IS CLASSIFIED AS A MINOR COLLECTOR ROAD.  
MINIMUM DRIVE SPACING IS 360'  
MINIMUM STOPPING SIGHT DISTANCE IS >495 (55 MPH)

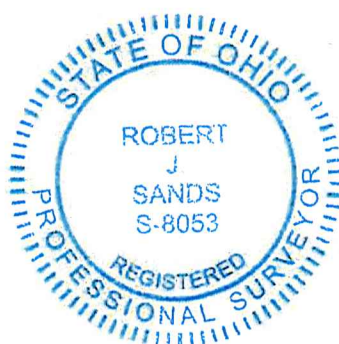
**CERTIFICATION:**

THIS PLAT WAS PREPARED BY DLZ OHIO, INC. AND IS A TRUE AND ACCURATE REPRESENTATION, TO THE BEST OF MY KNOWLEDGE AND BELIEF, OF A SURVEY MADE BY THE SAME IN NOVEMBER, 2024.

THIS SURVEY WAS PERFORMED WITHOUT THE BENEFIT OF A TITLE POLICY; ALL OWNERSHIP SHOWN IS BASED UPON RECORD DATA ACQUIRED AT THE TIME OF SURVEY, NO GUARANTEE IS PLACED UPON ACTUAL OWNERSHIP OF ANY PROPERTY.

EASEMENTS MAY EXIST ON SUBJECT PROPERTY THAT WOULD BE REVEALED IN A TITLE EXAMINATION.

*Robert J. Sands* 11/22/24  
ROBERT J. SANDS DATE  
PROFESSIONAL SURVEYOR NO. 8053



INDEXED ON MAP  
5557

**BOUNDARY SURVEY OF TWO TRACTS**

LYING IN  
VIRGINIA MILITARY SURVEY 3139  
JEFFERSON TOWNSHIP  
LOGAN COUNTY, OHIO

**DLZ**  
P.O. Box 237 • Bellefontaine, OH 43311  
(937) 593-7335 • www.dlz.com  
Project #2421-6085.00