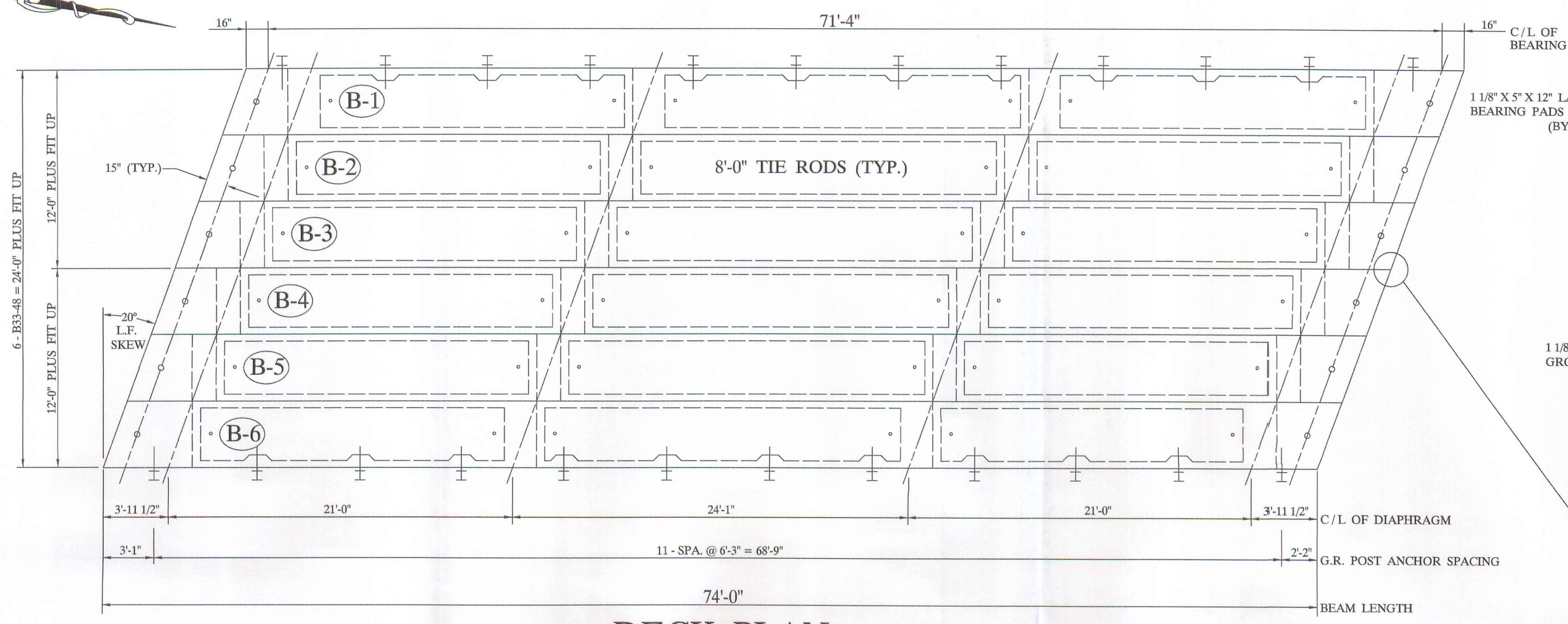
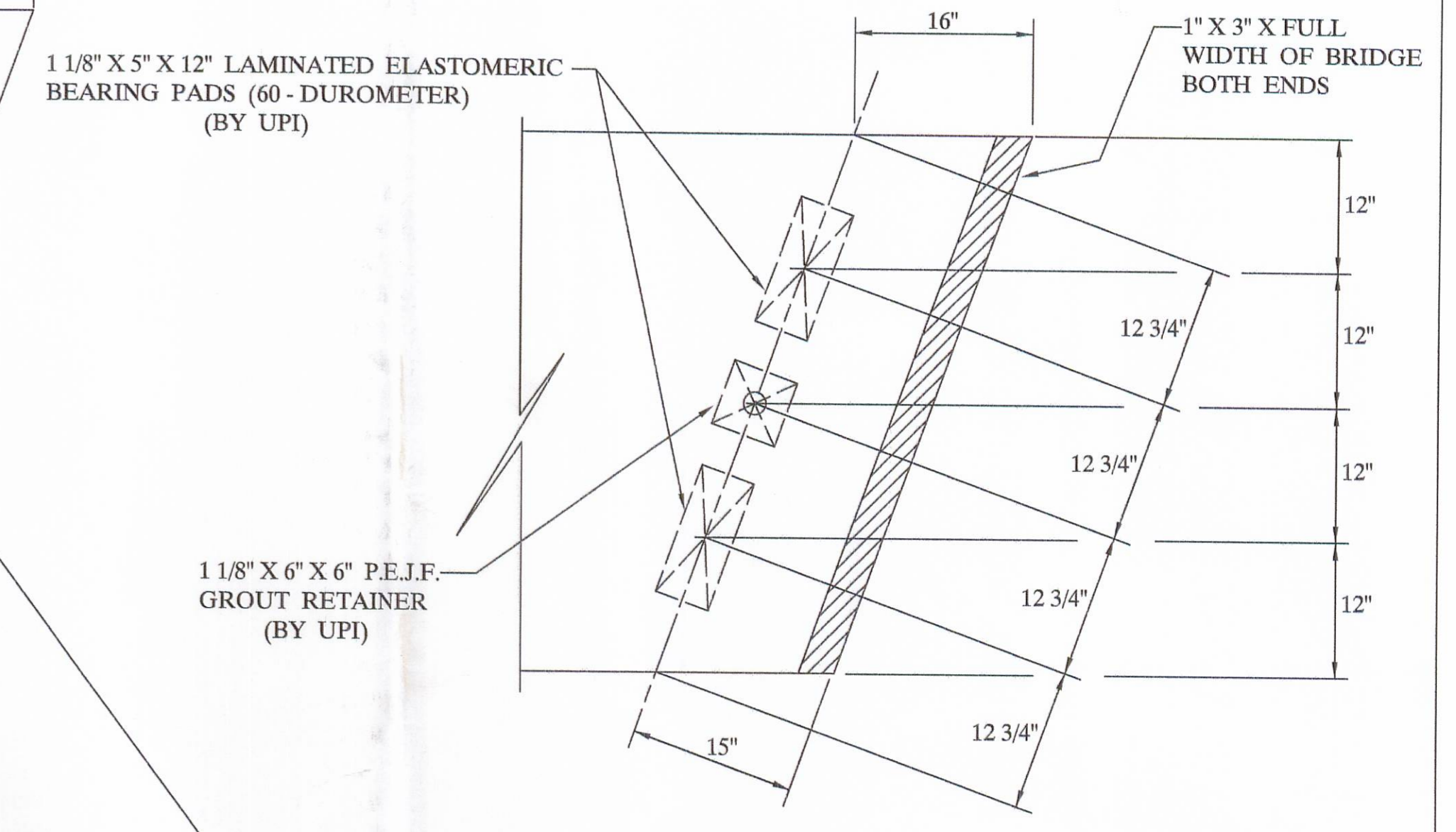


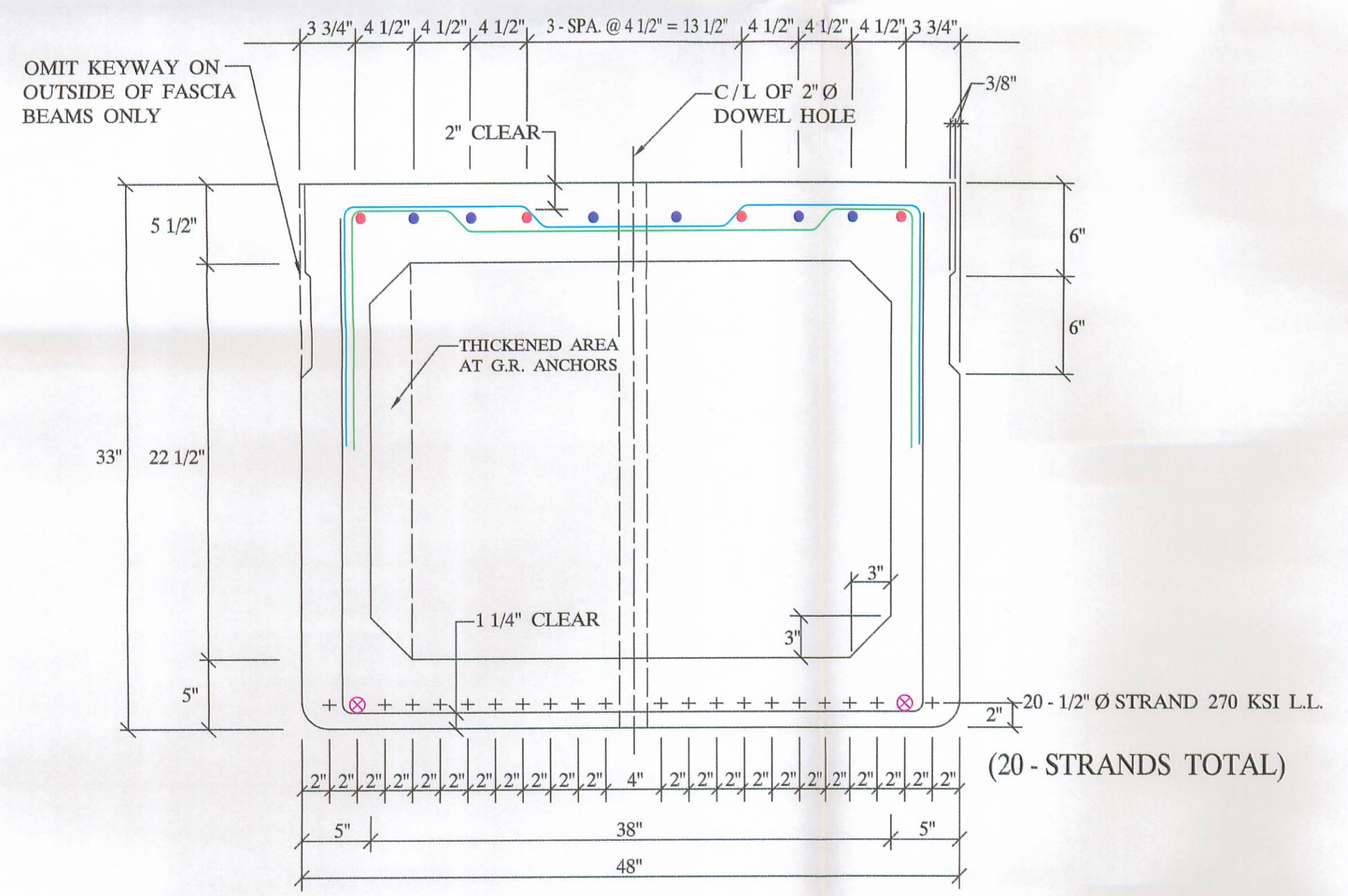
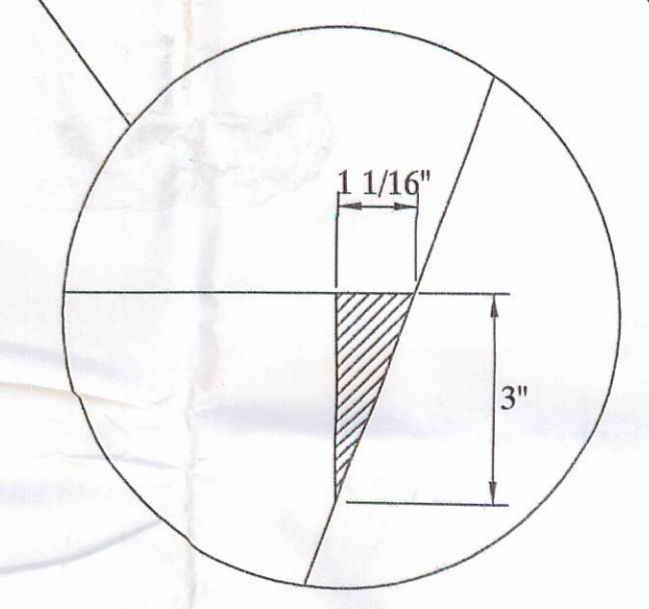
APPROVED
BY LOGAN CO. ENGINEER



DECK PLAN



**BEARING PAD LAYOUT
(PLAN VIEW)**

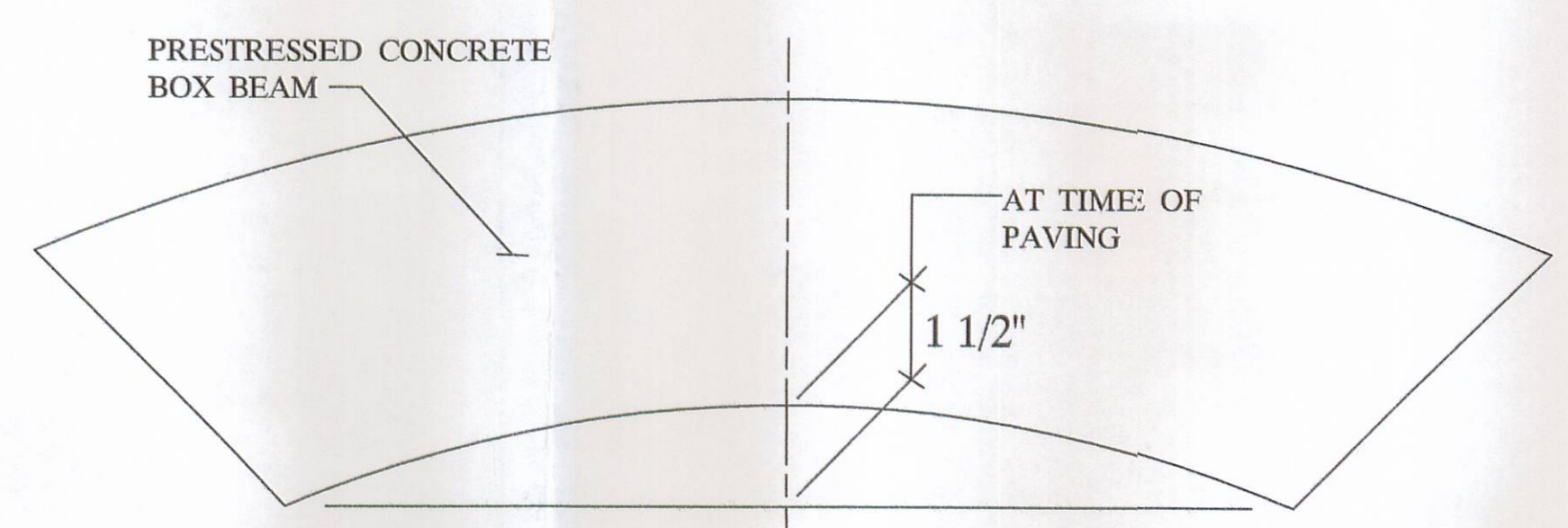


**B33-48
(6 - REQUIRED)
ELEVATION**

- 4 - #5 BARS FULL LENGTH RUN (TOP)
- 6 - #5 ADDITIONAL BARS 9'-7" LONG AT EACH END OF BEAM (TOP)
- ⊗ 2 - #6 BARS FULL LENGTH RUN (BOTTOM)

QUALITY CONTROL NOTE :

- STRAND AREA IS .153 SQ. IN.
- STRAND IS LOW LAX.
- INITIAL LOAD IS 30,982 # / STRAND.
- REBAR IS ALL GRADE - 60.
- STIRRUPS UNDER STRAND.
- CONCRETE STRENGTHS : 5500 PSI AT 28 DAYS
4000 PSI AT RELEASE
- O.D.O.T. 2002 SPECIFICATIONS.

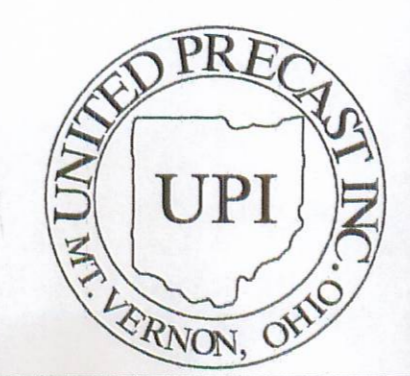


**CAMBER DETAIL
(ELEVATION)**

BILL OF MATERIALS

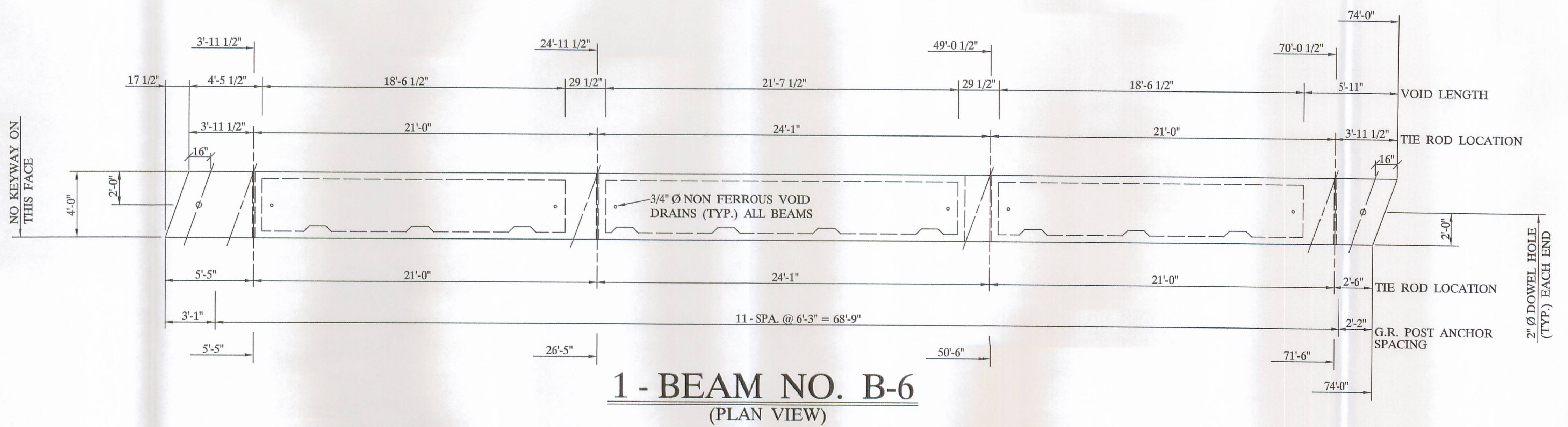
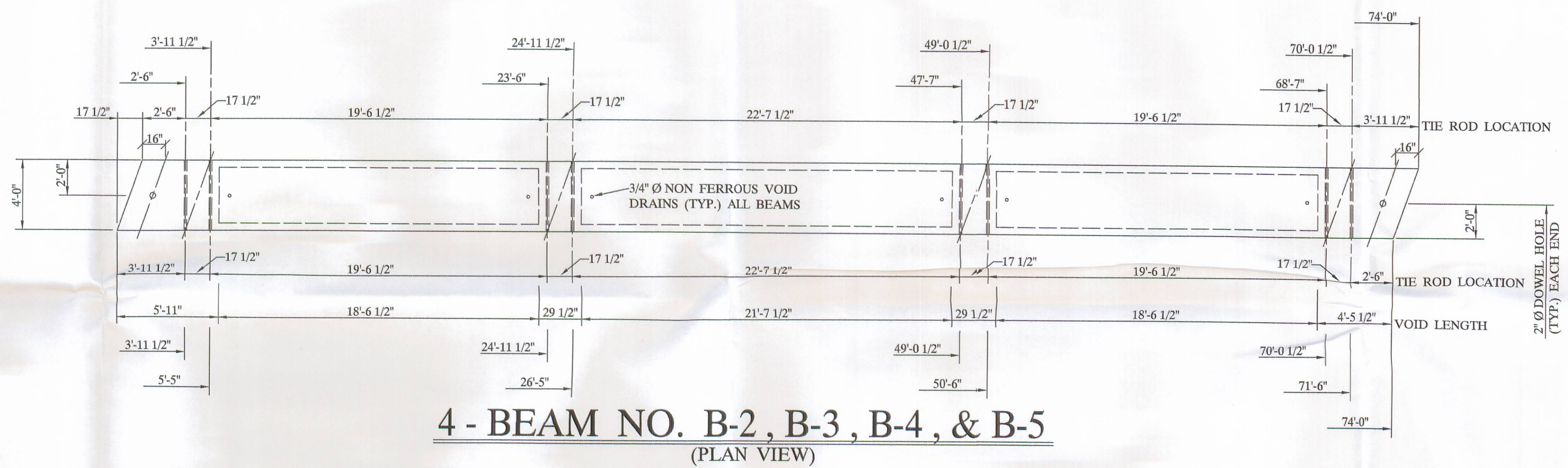
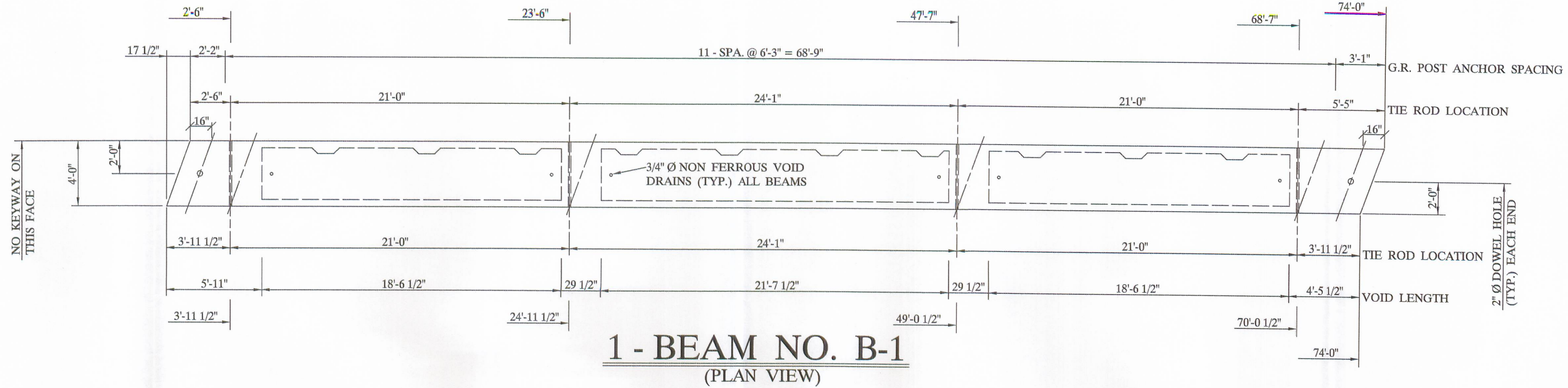
NO	ITEM	QTY / BEAM	NOTES	TOTAL
1	BEAM WEIGHT		71,128 #	102 CY.
2	CONCRETE	17 CY.		408 GAL.
3	CALCIUM NITRITE	68 GAL.	D.C.I. 4 - GAL. / CY.	10,400 L.F.
4	STRAND		1/2" Ø STRAND 270 KSI L.L.	11,649 #
5	RE - STEEL		GRADE - 60	367 L.F.
6	VOID		22 1/2" X 38"	36 EA.
7	VOID DRAINS		3/4" Ø NON FERROUS	20 EA.
8	TIE ROD	8'-0"	1" Ø STEEL ROD	160 L.F.
9	TIE ROD SLEEVES			48 EA.
10	TYPE - B - ANCHORS			24 EA.
11	TYPE - C - ANCHORS			12 EA.
12	DOWELS & SLEEVES			0.9 GAL.
13	WASSER		MC - TAR	4.6 GAL.
14	SILANE			370 L.F.
15	JUTE			24 EA.
16	BEARING PADS		1 1/8" X 5" X 12" , 2 - LAM.	23 LBS.
17	NON-SHRINK GROUT ADDITIVE		2 1/2 CY. GROUT, BY OTHERS	24 EA.
18	GUARDRAIL POST		(INSTALLED) TYPE - 2	8 EA.
19	GUARDRAIL POST (OFF DECK)		(SHIP LOOSE)	162.5 L.F.
20	GUARDRAIL ELEMENT			162.5 L.F.
21	TUBULAR BACK - UP			9 S.F.
22	P.E.J.F.			

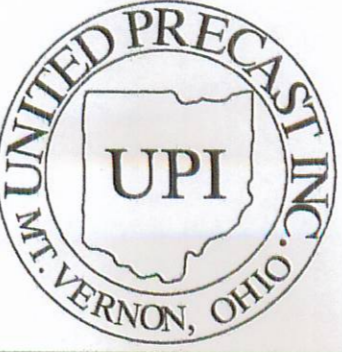
NOV 2 2005
LOGAN CO. ENGINEER



UNITED PRECAST INC.
 ROUNDHOUSE LANE
 MOUNT VERNON, OHIO 43050
 PHONE : (740) 393-1121
 FAX : (740) 392-9708

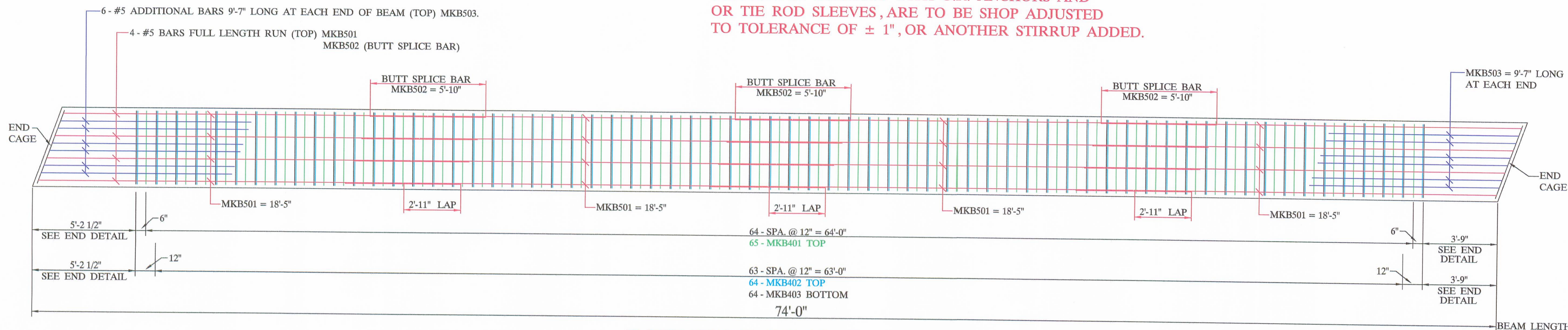
DESCRIPTION:	BOX BEAM DETAILS	SCALE:	DRAWN BY:
JOB NAME:	ITEM 515 BRIDGE NO. LOG - 99 - 0.87 LOGAN COUNTY	PROJECT NO. T.R. 99	PHIL
DATE:	NOVEMBER 2005	APPROVED BY:	REVISID:
		E.O.C. 11/1/05	DRAWING NO. 1 OF 4



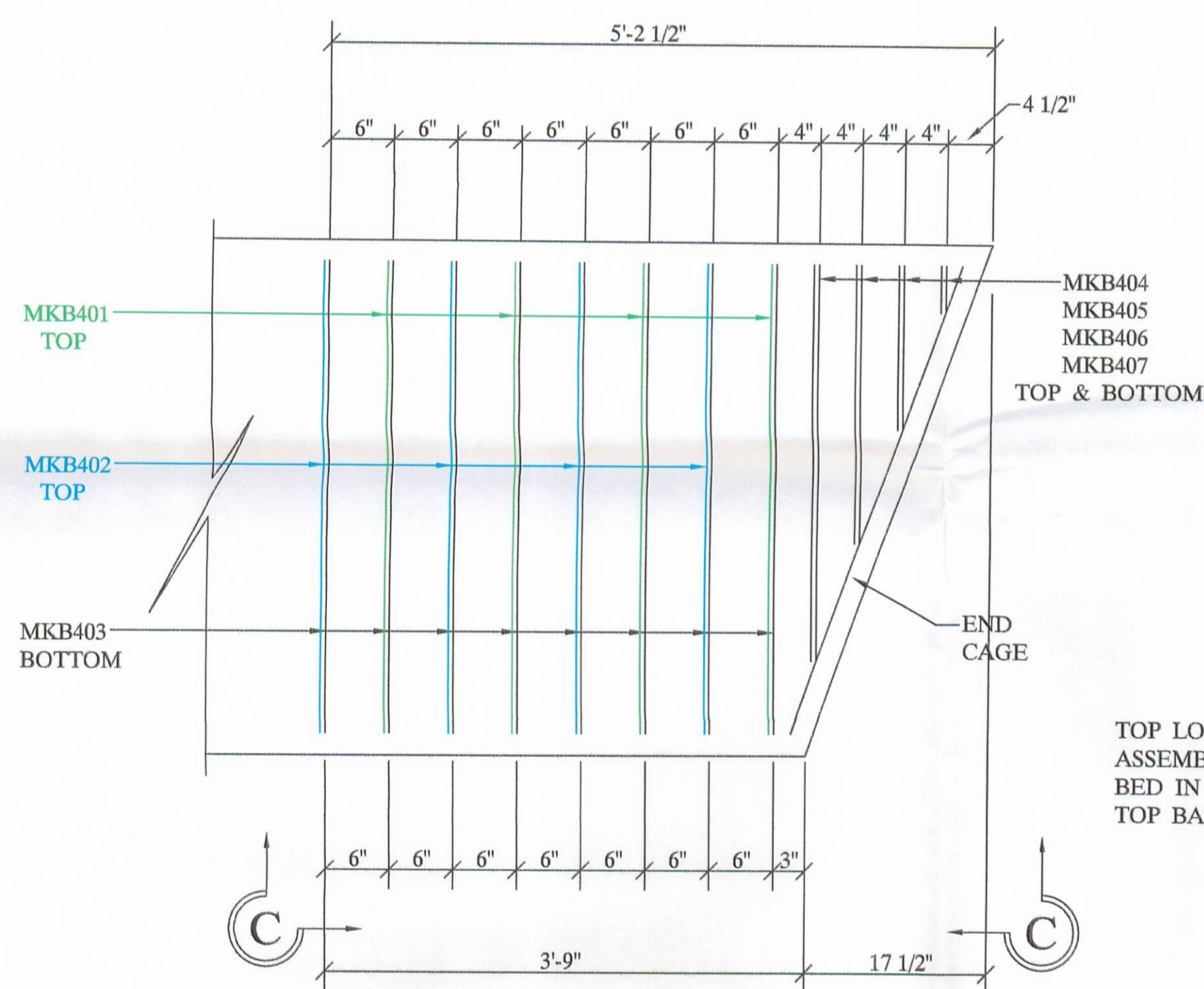
	UNITED PRECAST INC.		DESCRIPTION:	BOX BEAM DETAILS		SCALE:	DRAWN BY:
	ROUNDHOUSE LANE MOUNT VERNON, OHIO 43050 PHONE: (740) 393-1121 FAX: (740) 392-9703		JOB NAME:	BRIDGE NO. LOG - 99 - 0.87 LOGAN COUNTY		PROJECT NO. T.R. 99	PHIL
			DATE:	NOVEMBER 2005	APPROVED BY:	E.O.C.	11/1/05
							DRAWING NO.
							2 OF 4

NOTE :

STIRRUPS IN CONFLICT WITH G.R. ANCHORS AND OR TIE ROD SLEEVES, ARE TO BE SHOP ADJUSTED TO TOLERANCE OF $\pm 1"$, OR ANOTHER STIRRUP ADDED.

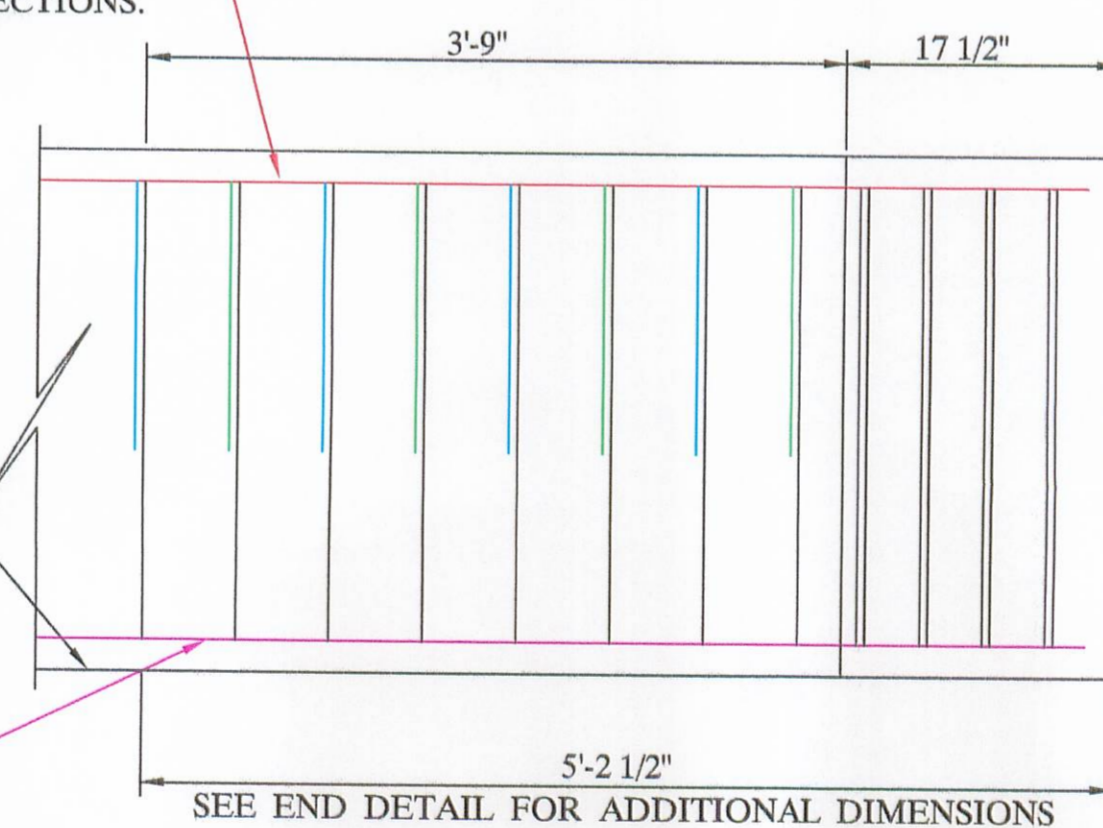


REINFORCING LAYOUT
(PLAN VIEW)

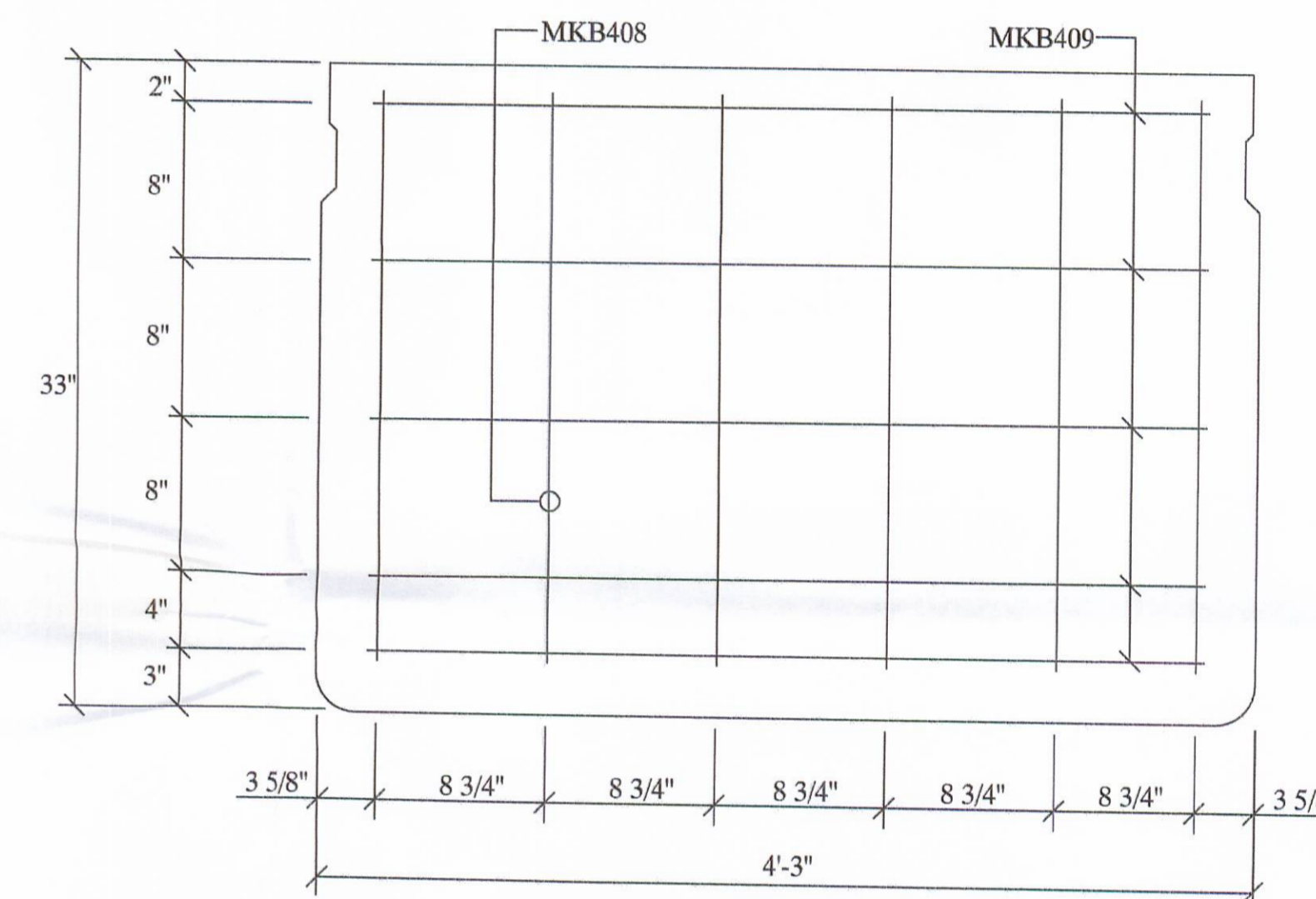


(TYP.) END DETAIL
(PLAN VIEW)

TOP LONGITUDINAL BARS & TOP STIRRUPS ASSEMBLED IN TOP CAGE & PLACED IN BED IN UNITS OF VARIOUS LENGTH WITH TOP BARS BUTT SPLICED AT INTERSECTIONS.



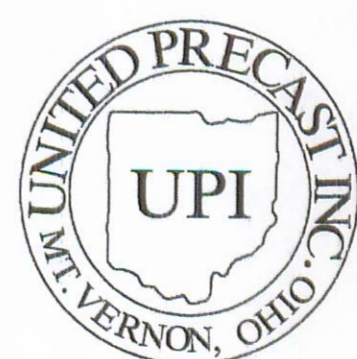
ELEVATION C-C



BEAM END CAGE
(ELEVATION)

6 - B33-48 X 74'-0" WITH 20° L.F. SKEW
BAR LIST

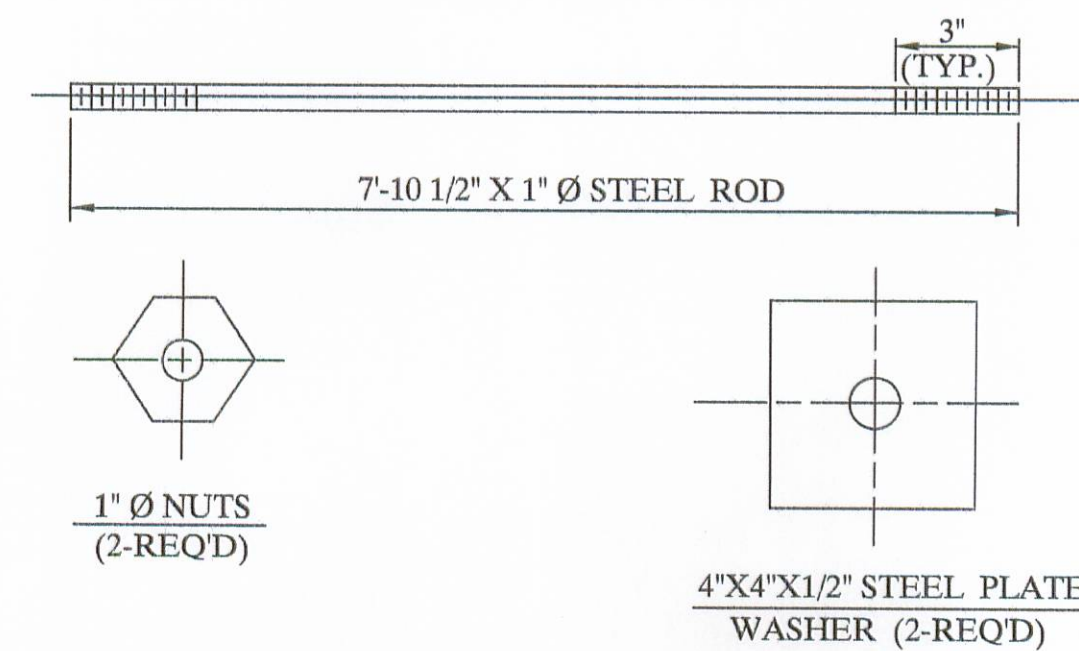
MARK	SIZE	LENGTH	QUANTITY	SHAPE	A	B	C	D	E
B401	4	6'-2 1/2"	438	TYPE - 1	43"	17"	13"	2"	13"
B402	4	6'-2 1/2"	432	TYPE - 1	43"	17"	7"	2"	25"
B403	4	8'-2 1/2"	480	TYPE - 2	43"	29"			
B404	4	5'-0 1/2"	24	TYPE - 3	5"	29"			
B405	4	5'-10 1/2"	24	TYPE - 3	15"	29"			
B406	4	6'-8 1/2"	24	TYPE - 1	25"	29"			
B407	4	7'-7 1/2"	24	TYPE - 1	36"	29"			
B408	4	2'-5"	72	TYPE - 3	29"				
B409	4	3'-8 3/4"	60	TYPE - 3	44 3/4"				
B501	5	18'-5"	96	TYPE - 3	18'-5"				
B502	5	5'-10"	72	TYPE - 3	5'-10"				
B503	5	9'-7"	72	TYPE - 3	9'-7"				
B601	6	18'-5"	48	TYPE - 3	18'-5"				
B602	6	6'-8"	36	TYPE - 3	6'-8"				



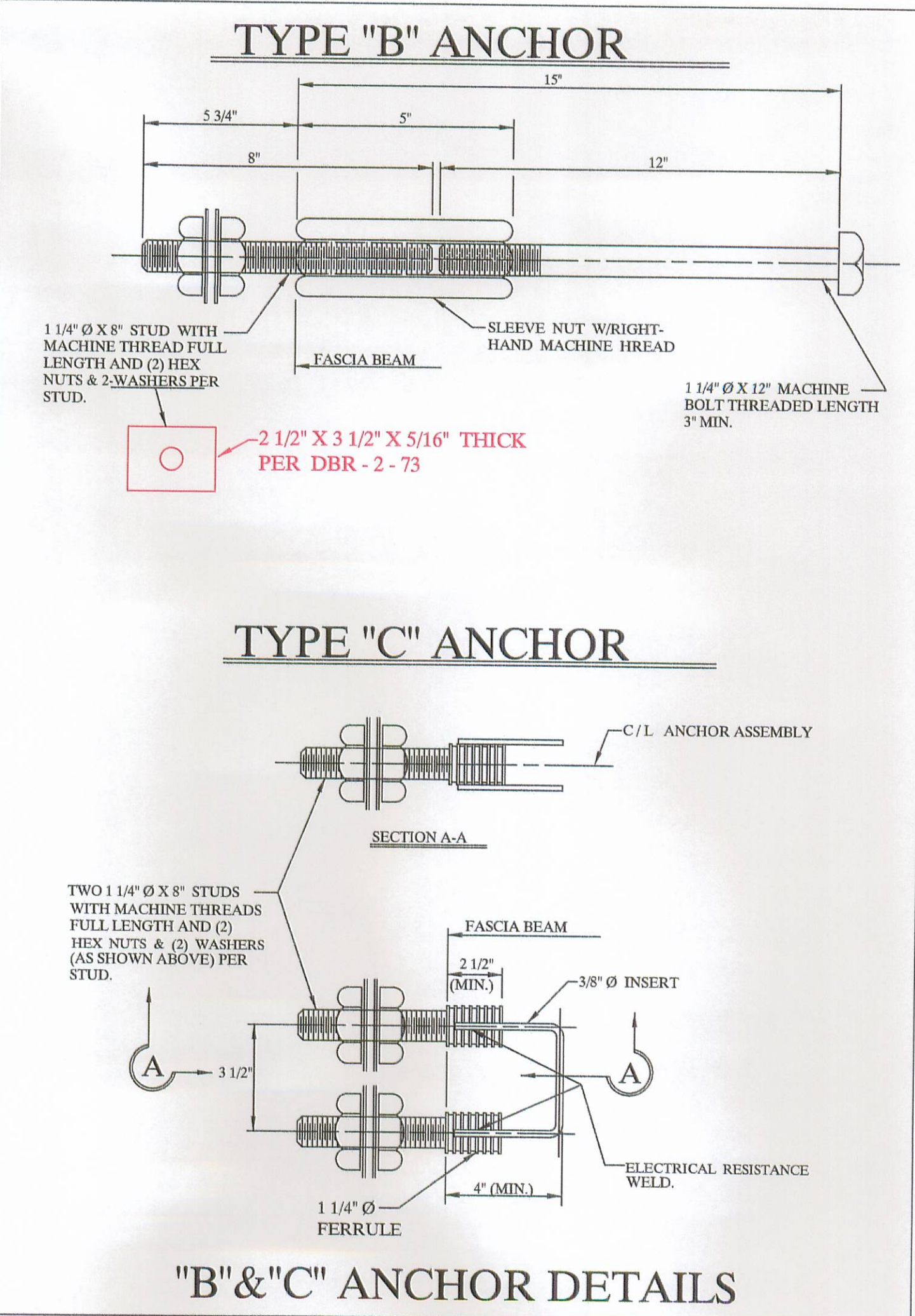
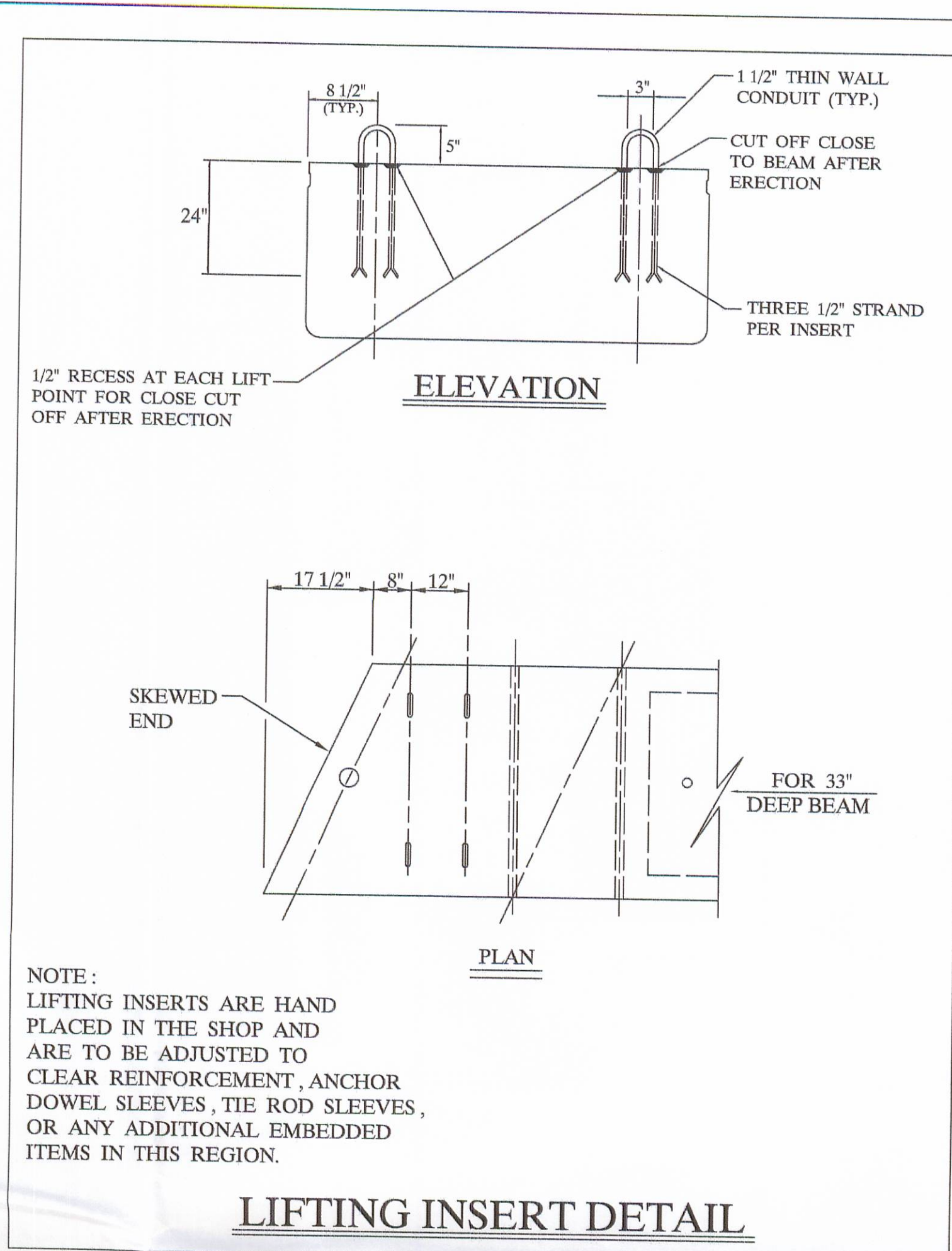
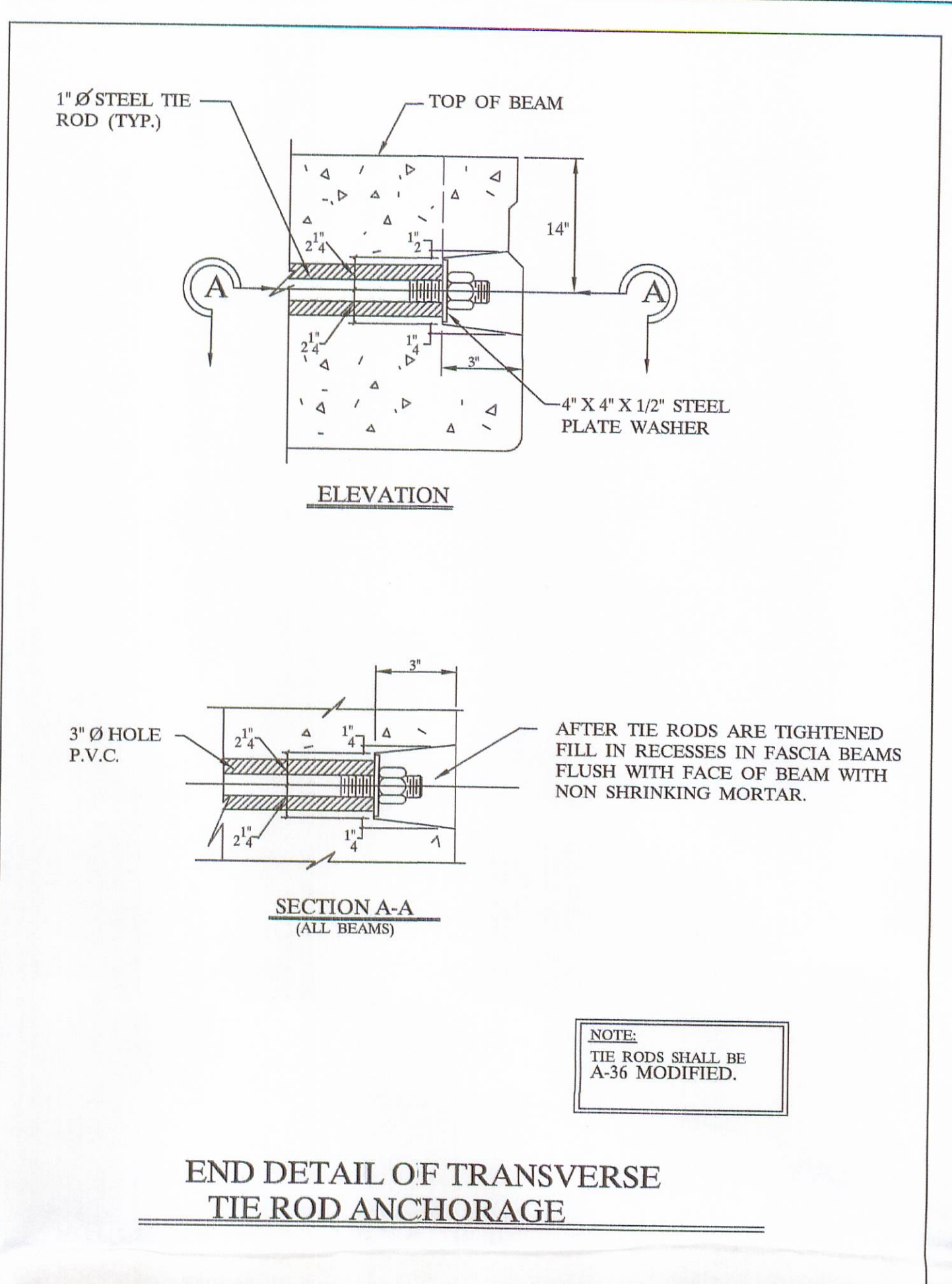
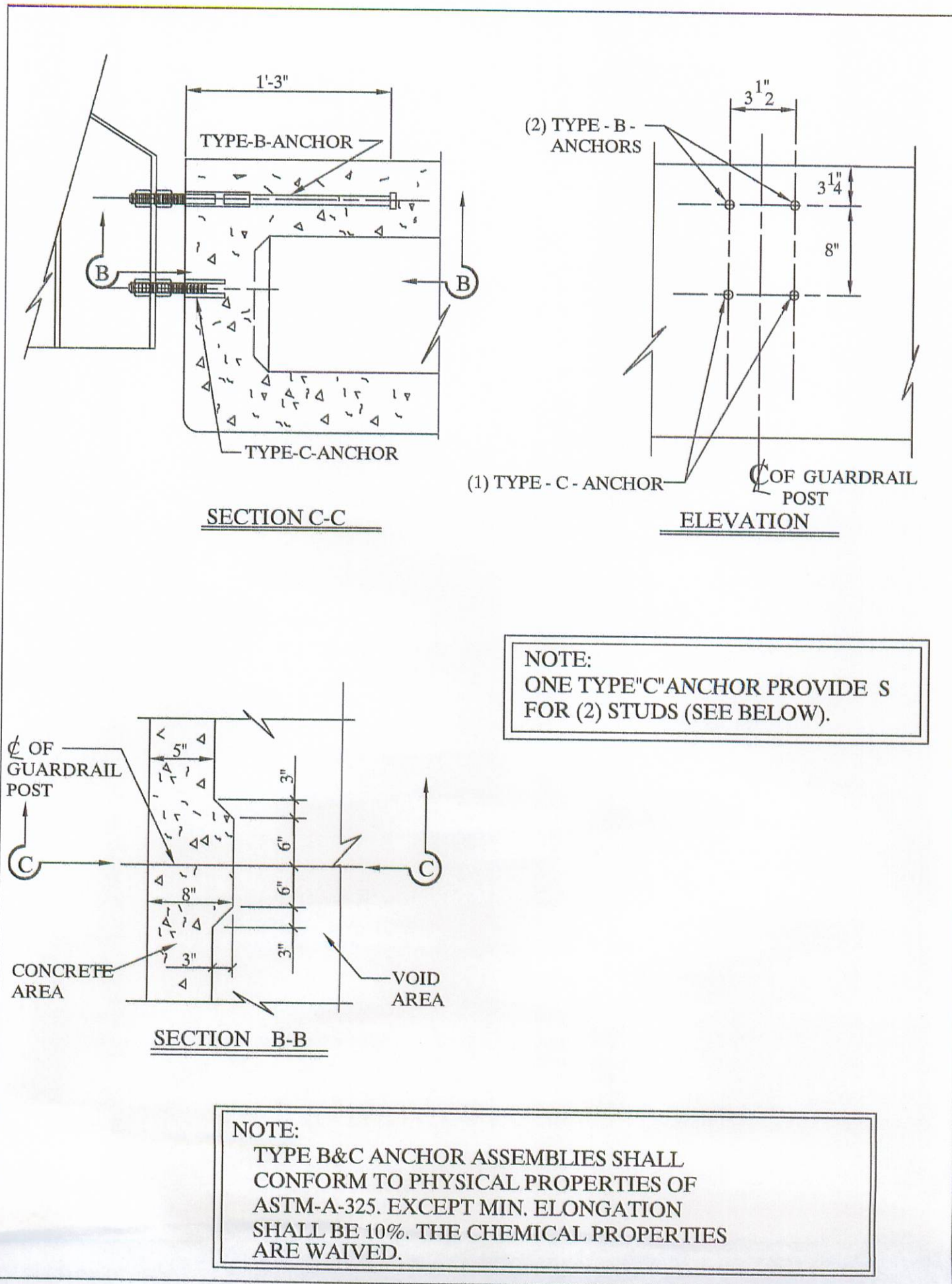
UNITED PRECAST INC.
 ROUNDHOUSE LANE
 MOUNT VERNON, OHIO 43050
 PHONE : (740) 393-1121
 FAX : (740) 392-9708

DESCRIPTION: REINFORCING DETAILS	SCALE:	DRAWN BY: PHIL
JOB NAME: ITEM 515 BRIDGE NO. LOG - 99 - 0.87 LOGAN COUNTY	PROJECT NO. T.R. 99	REVISED:
DATE: NOVEMBER 2005	APPROVED BY: E.O.C. 11/1/05	DRAWING NO. 3 OF 4

8'-0" TIE ROD ASS'Y

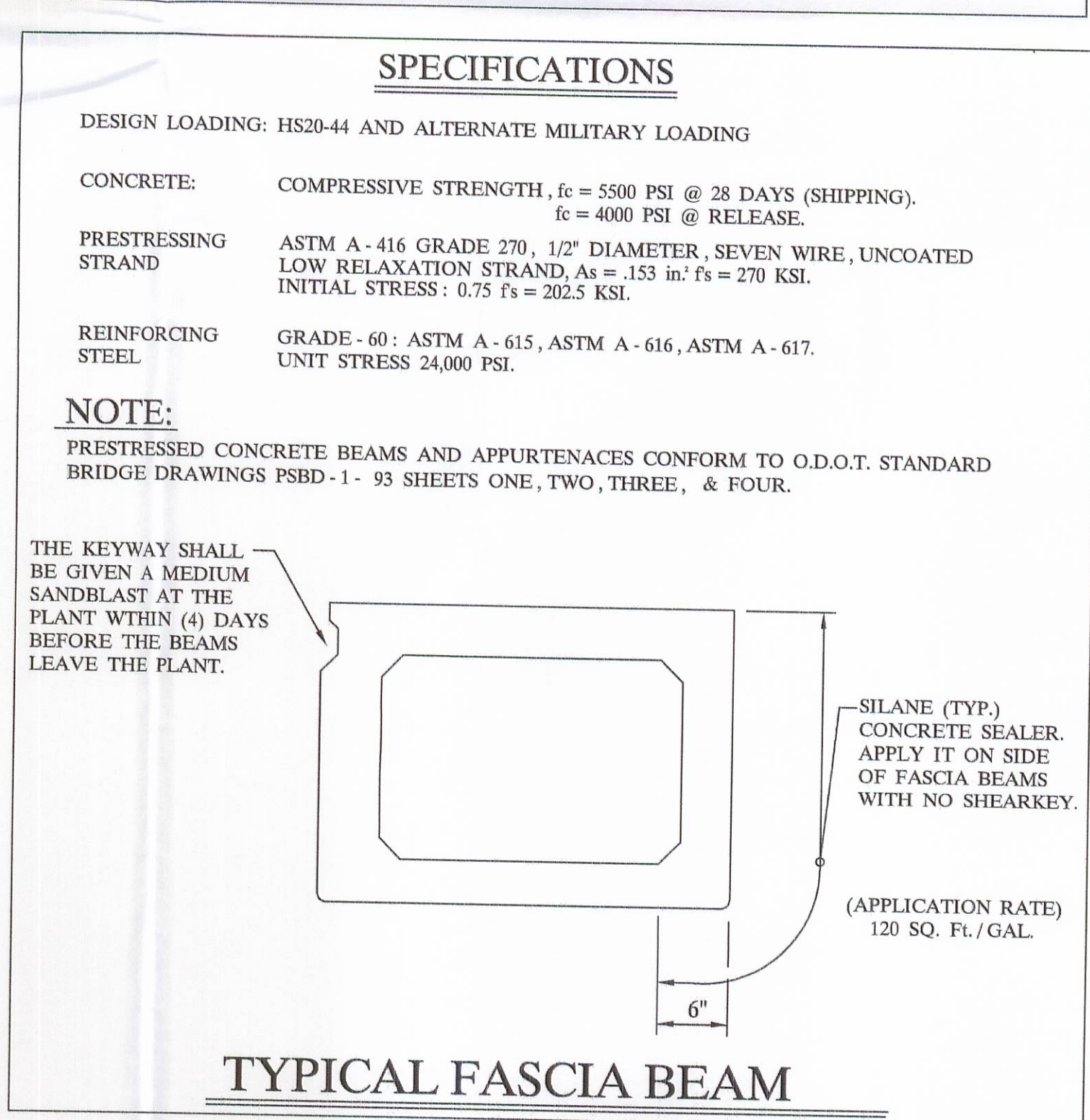


NOTE:
ALL ITEMS INCLUDING TIE RODS ACCESSORIES SHALL BE GALVANIZED IN ACCORDANCE WITH ASTM-123 OR 153. PER CMS 711.02, UNLESS OTHERWISE NOTED.



NOTE:

- 1) GALVANIZE ALL HARDWARE PER CMS. 711.02.
- 2) PROVIDE A BROOM FINISH ON TOP SURFACE OF BEAM SUITABLE FOR WATERPROOFING.
- 3) ADD D.C.I. TO CONCRETE (4- GAL. / CUBIC YARD).
- 4) WATERPROOF BEAM ENDS.
- 5) DETENSION STRAND SYMETRICALLY ABOUT CENTERLINE.



BRIDGE NO. LOG - 99 - 0.87	ITEM 515
LOGAN COUNTY	PROJECT NO. T.R. 99
UNITED PRECAST INC.	
ROUNDHOUSE LANE MT. VERNON, OHIO 43050 PHONE: (740) 393-1121, FAX: (740) 392-9708	SCALE ----- REVISED
DATE NOV. '05	APPROVED BY: E.O.C. 11/1/05
	DRAWING NO. 4 OF 4