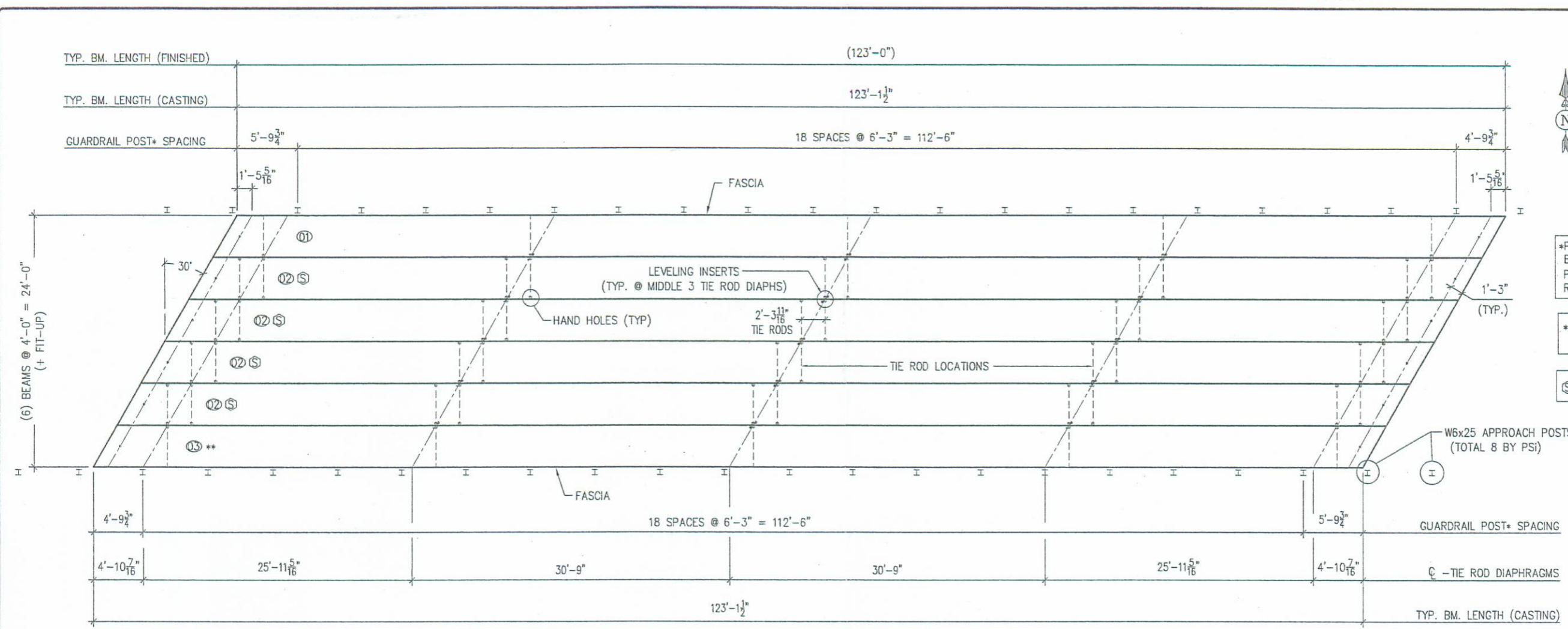


gedams

D3279LcOH.dwg-1 of 5

12:32 PM

10-24-03



- \*POSTS, RAIL, & TUBULAR BACK-UP BY PSI. POSTS SHIPPED INSTALLED - REMAINDER SHIPPED LOOSE.
- \*\*MK. 03 IS IDENTICAL TO MK. 01 BY 180° ROTATION
- ⊗ = BEAM IS SYMMETRICAL

**BRIDGE PLAN**

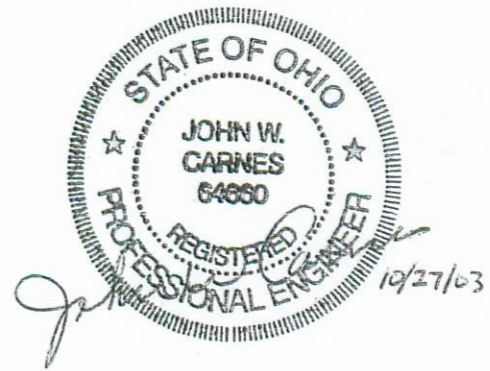
**GENERAL NOTES:**

- ✓ 1. MANUFACTURE BEAMS IN ACCORDANCE WITH ODOT SPECIFICATIONS.
- ✓ 2. MINIMUM CONCRETE STRENGTH @ RELEASE OF STRAND = 5,500 P.S.I  
MINIMUM CONCRETE STRENGTH @ 28 DAYS = 7,300 P.S.I
- ✓ 3. STRAND SHALL BE (7) WIRE, UNCOATED, "SPECIAL-OVERSIZED" LOW RELAXATION, 1/2" DIAMETER (A<sub>s</sub> = 0.167 IN<sup>2</sup>), GRADE 270
4. PULL EACH STRAND TO 33,818 LBS.
- ✓ 5. STEEL GRADE 60, A.S.T.M. A-615.
- ✓ 6. BROOM-FINISH TOPS OF BEAMS
- ✓ 7. HS20-44 & THE ALTERNATE MILITARY LOADING.
- ✓ 8. CONCRETE MIX SHALL INCLUDE ODOT APPROVED CORROSION INHIBITOR; DOSAGE SHALL BE PER MANUFACTURER'S RECOMMENDATIONS.
- ✓ 9. ALL ANCHOR BOLTS, STUDS, INSERTS, TIE RODS, NUTS, & WASHERS SHALL BE GALVANIZED, PER ODOT SPECIFICATIONS.
- ✓ 10. KEYWAYS SHALL RECEIVE A MEDIUM SANDBLAST AT PLANT WITHIN FOUR DAYS PRIOR TO SHIPPING.
- ✓ 11. ENTIRE BEAM ENDS SHALL BE SEALED W/ BITUMINOUS COATING.

**NOTE:**

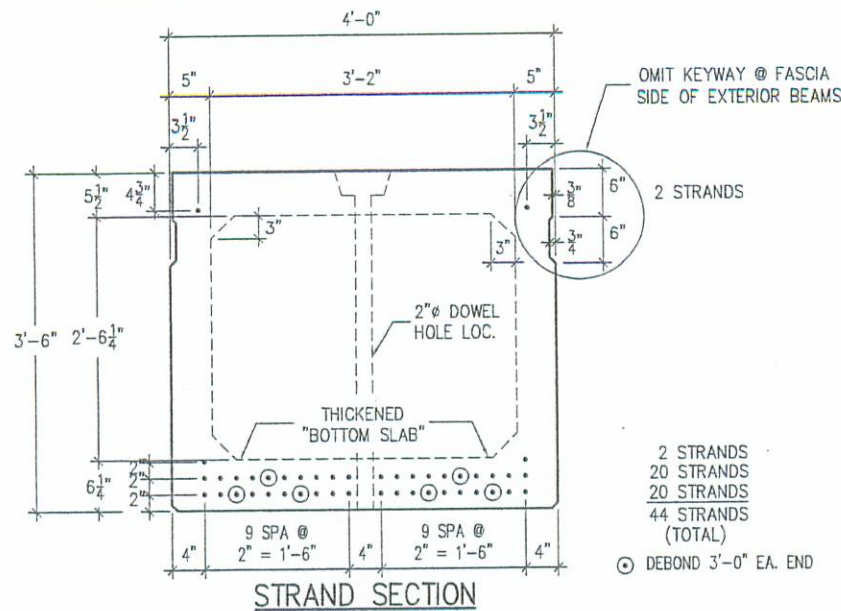
- PSI SHALL FURNISH, INCIDENTAL TO BEAMS:
- ✓ (25) 1"Ø TIE ROD 8'-0" LONG
  - ✓ (50) 1/2" X 4" SQ. PLATE WASHERS (FOR TIE RODS)
  - ✓ (50) 1"Ø HEX NUTS (FOR TIE RODS)
  - ✓ (12) 1"Ø X 4'-7" (GALV.) SMOOTH DOWEL RODS (THREADED ONE END)
  - ✓ (12) 1"Ø HEX NUTS (FOR DOWELS)
  - ✓ (12) 1/2" X 4" SQ. PLATE WASHERS (FOR DOWELS)
  - ✓ (12) 2" X 6" SQ. PEJF DOWEL SEALS
  - ✓ (88') 8 STRAND JUTE + INTERPLAST-N GROUT ADDITIVE
  - ✓ (38) ODOT TYPE 2 POSTS, INSTALLED USING:
    - (152) 1 1/4"Ø X 8" STUDS (ALL THREADED)
    - (304) 1 1/4"Ø HEX NUTS
    - (304) WASHERS
  - ✓ (24) ELASTOMERIC LAMINATED BEARING PADS (2 1/16" x 7" x 11") (SEE DETAIL, SHEET 4)
  - ✓ (250') STANDARD DEEP BEAM GUARDRAIL (SHIP LOOSE)
  - ✓ (250') TUBULAR BACK-UP (SHIP LOOSE)
  - ✓ (8) W6 x 25 x 6'-9" APPROACH POSTS

MARK NO.	NO. REQD.	SHIPPING WEIGHT
01	1	128,600 LBS.
02	4	131,100 LBS.
03	1	128,600 LBS.

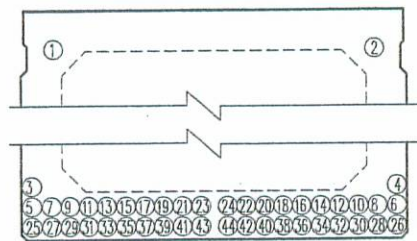


**APPROVED**  
**BY LOGAN CO. ENGINEER**  
*Kevin J. PE 11/04/2003*

PROJECT OVERVIEW		
LOGAN COUNTY, OHIO		
BR# 96-2.70		
C.R. 96 / SOUTH FORK MIAMI RIVER		
CONTRACTOR: COUNTY FORCES		
<b>PSI</b> Progress Services	PRODUCING PLANT: State Route 8 MELBOURNE, KY 41059 PH: (859) 441-0068 FAX: (859) 441-7986	DRAFTING OFFICE: P.O. BOX 211 MELBOURNE, KY 41059 PH: (859) 441-0068 FAX: (859) 441-7986
DATE: 10-7-03	DRAWN BY: DRA	CHECKED: GDA
REVISIONS		
CODE: B42480	SHEET: 1 of 5	JOB NO: D3279

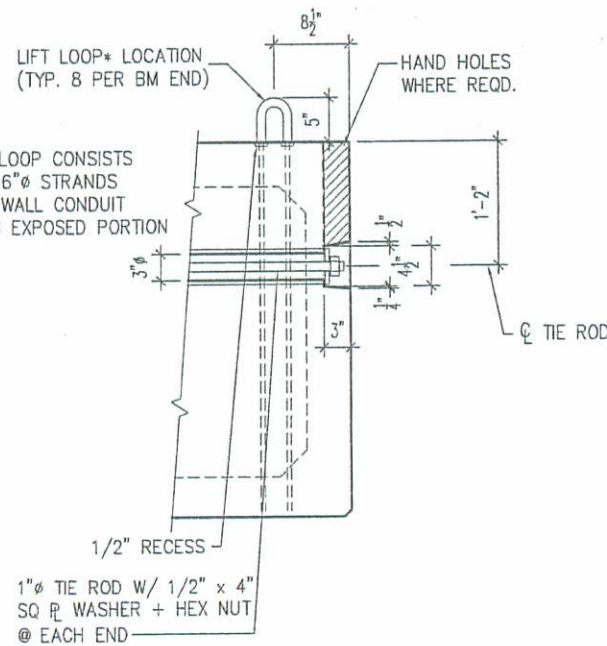


STRAND SECTION

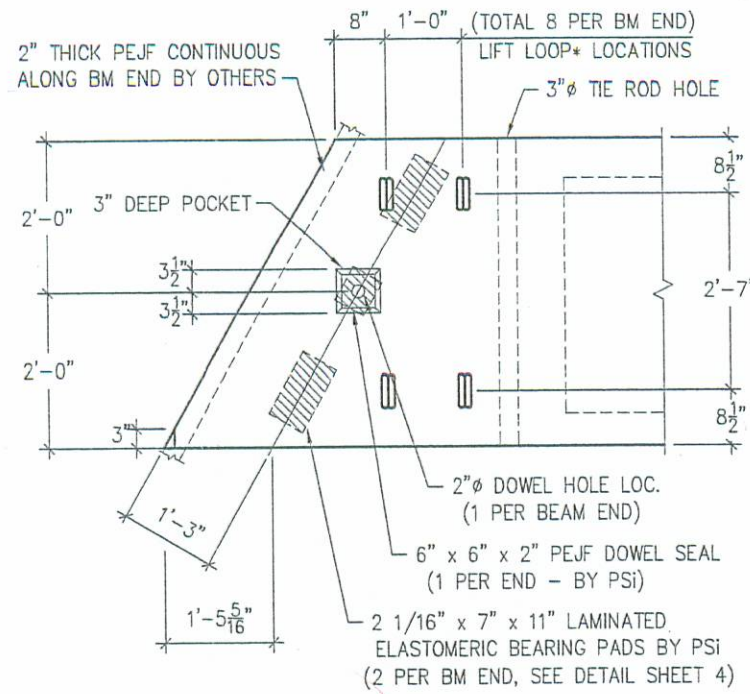


DETENSIONING PROCEDURE

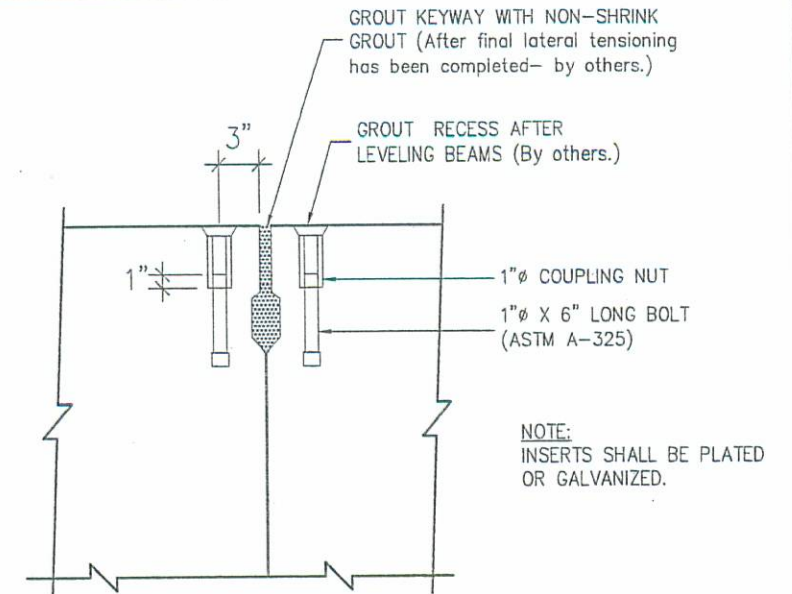
\* NOTE:  
EA. LIFT LOOP CONSISTS OF (3) 0.6" STRANDS W/ THIN WALL CONDUIT COVERING EXPOSED PORTION



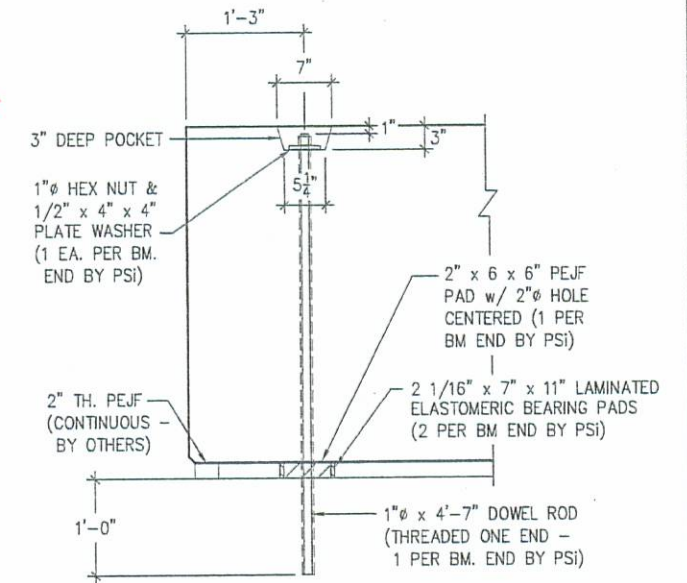
TIE ROD DETAIL



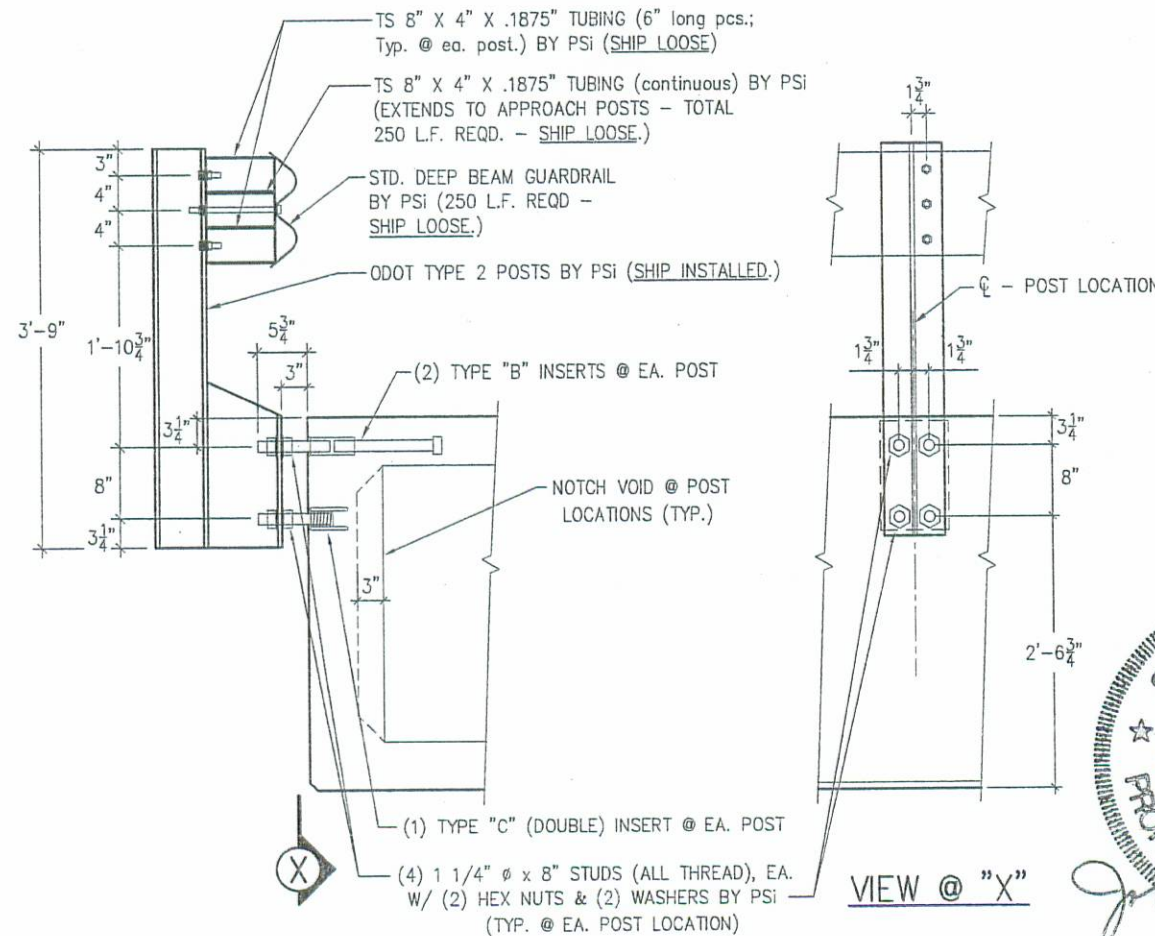
BEAM END PLAN



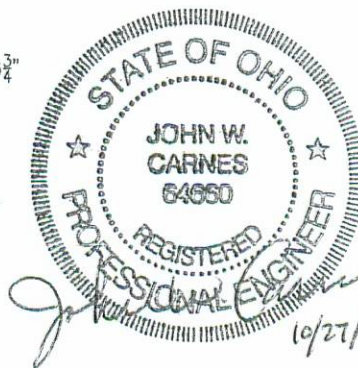
DETAIL @ ADJOINING BEAMS (Showing level inserts)



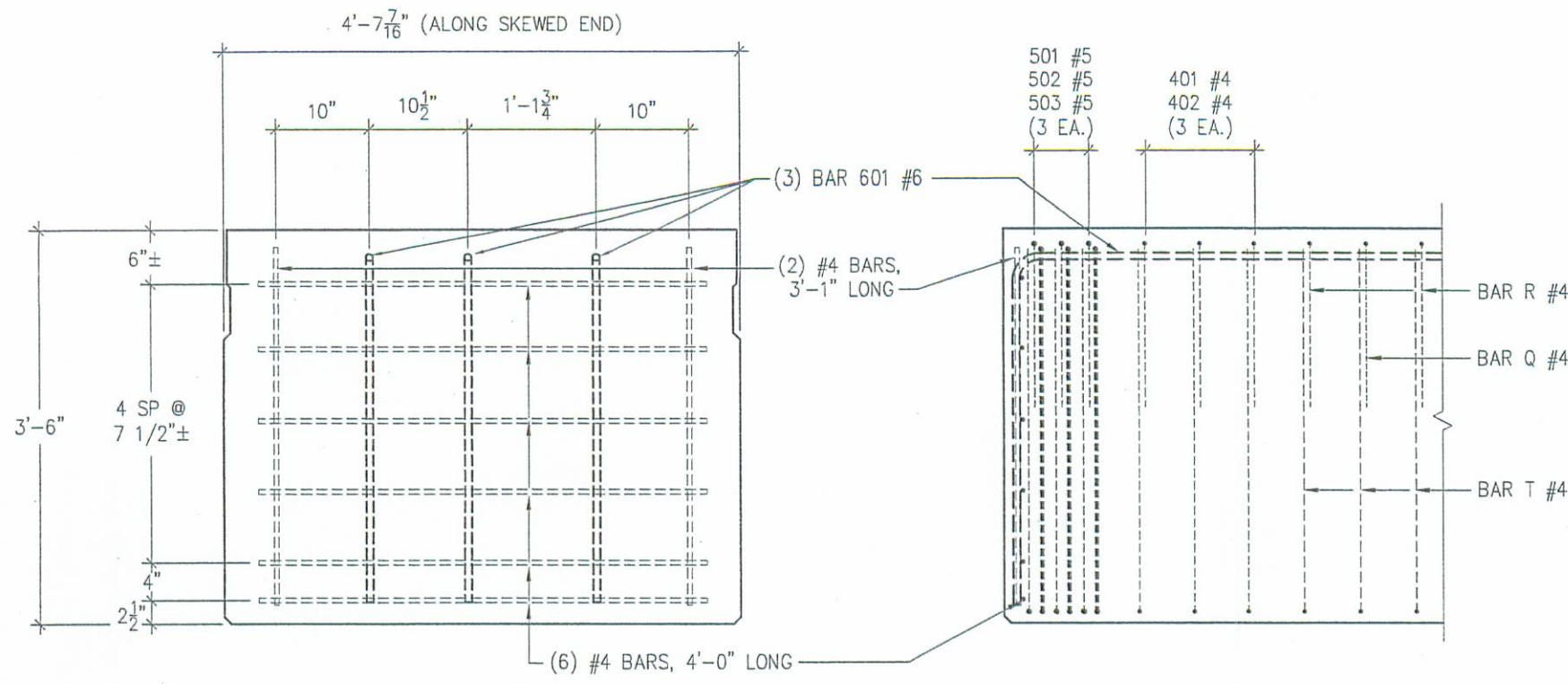
ABUTMENT END DETAIL (SHOWN PERPENDICULAR TO SKEWED END)



GUARDRAIL INSERT DETAIL

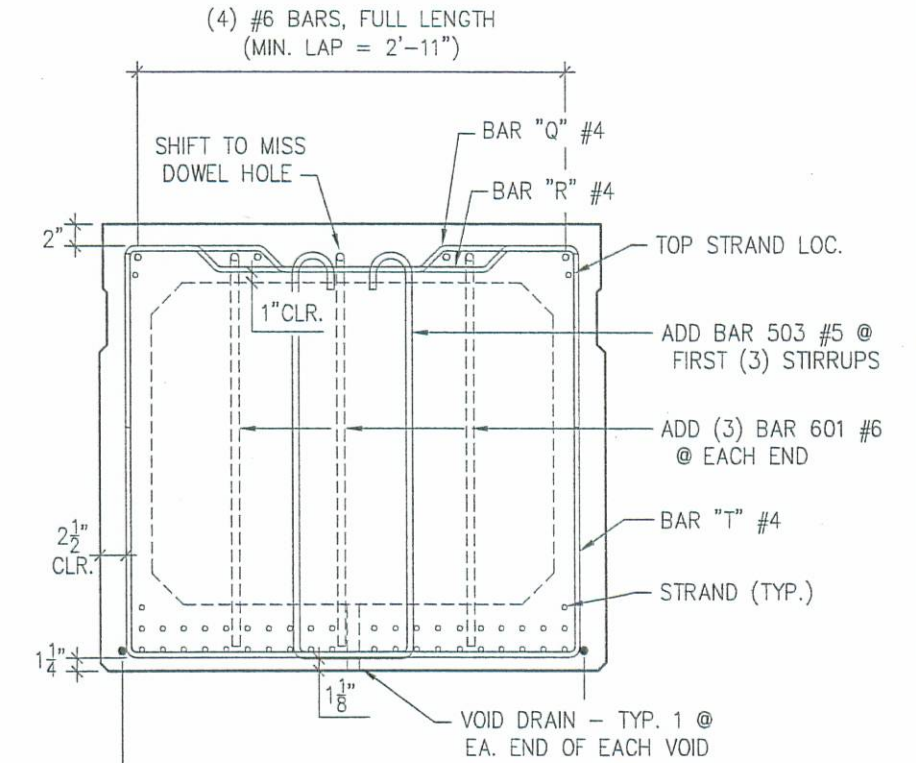


STRAND & DETAILS		
LOGAN COUNTY, OHIO		
BR# 96-2.70		
C.R. 96 / SOUTH FORK MIAMI RIVER		
CONTRACTOR: COUNTY FORCES		
	PRODUCING PLANT:	DRAFTING OFFICE:
	State Route 8 MELBOURNE, KY 41059 PH: (859) 441-0068 FAX: (859) 441-7986	P.O. BOX 211 MELBOURNE, KY 41059 PH: (859) 441-0068 FAX: (859) 441-7986
DATE: 10-7-03	DRAWN BY: DRA	CHECKED: GDA
REVISIONS		
CODE: B42480	SHEET: 2 of 5	JOB NO: D3279

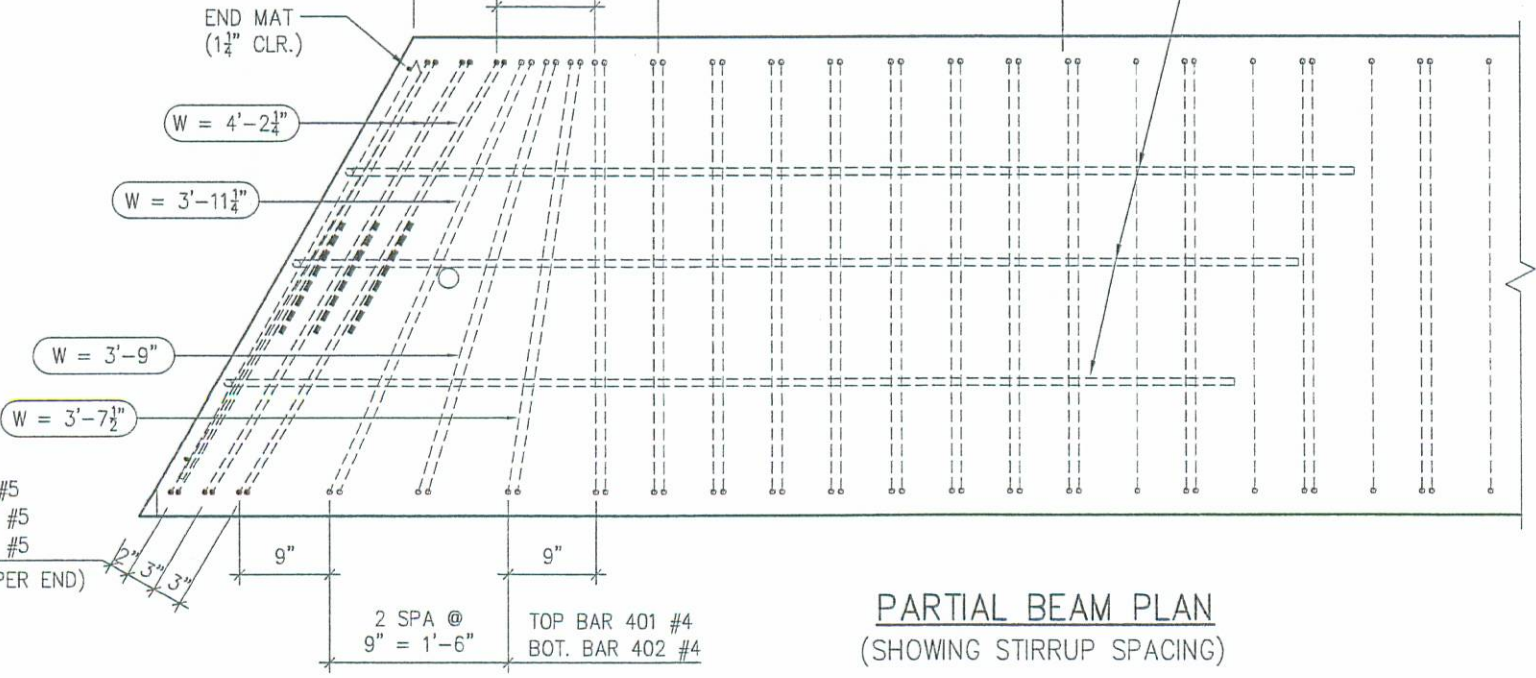
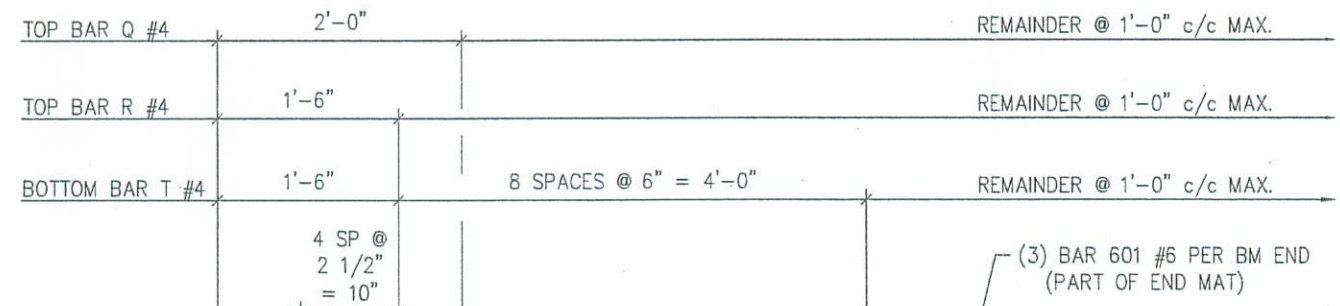


ABUT. END MAT DETAIL

SIDE ELEV. @ BM. END



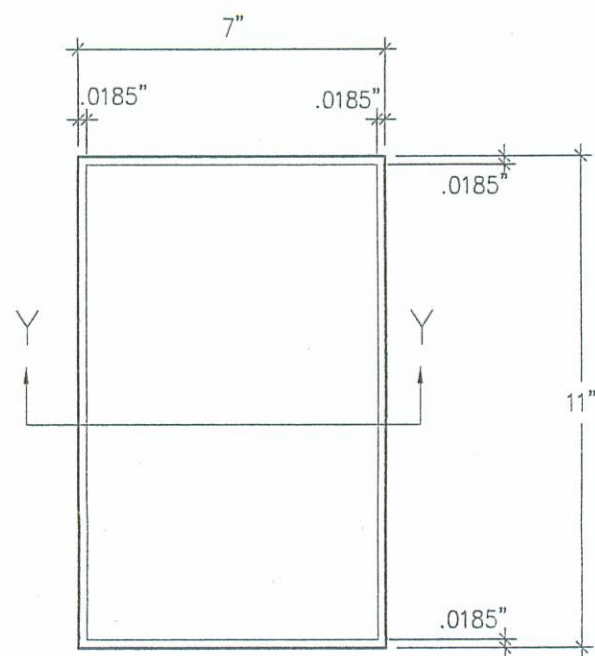
STEEL SECTION



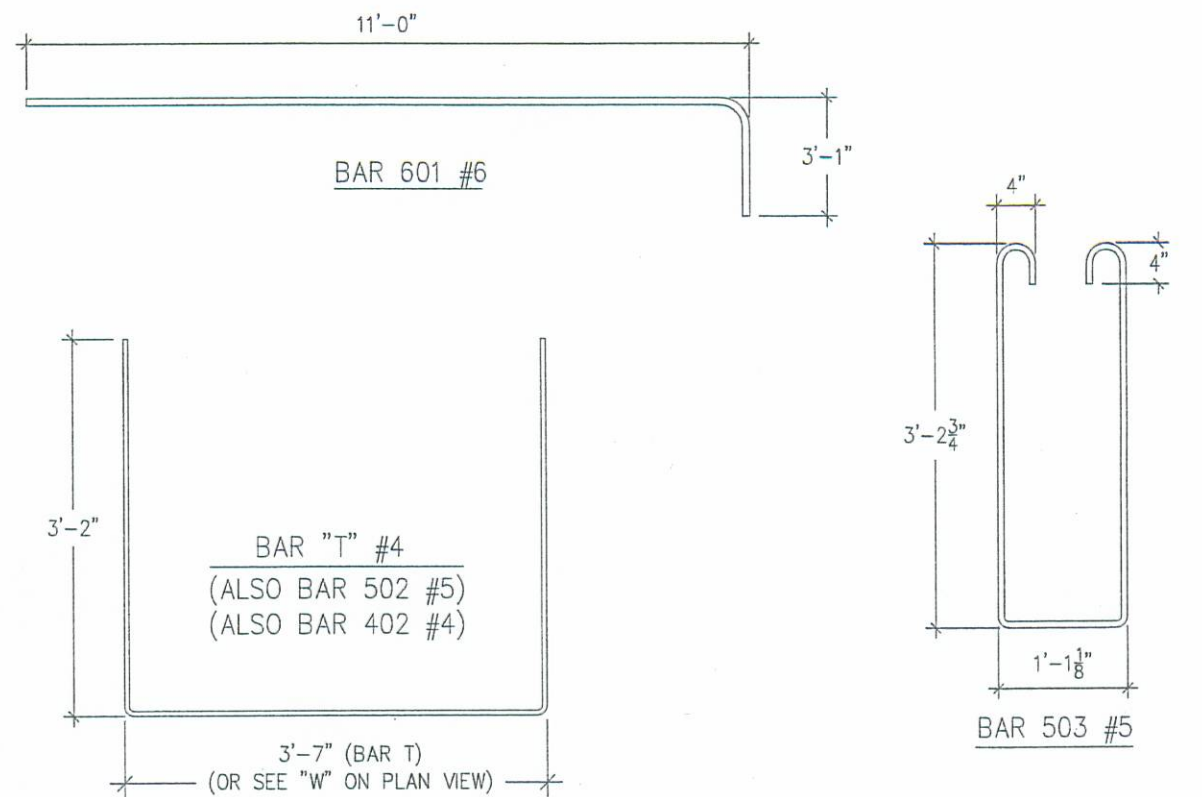
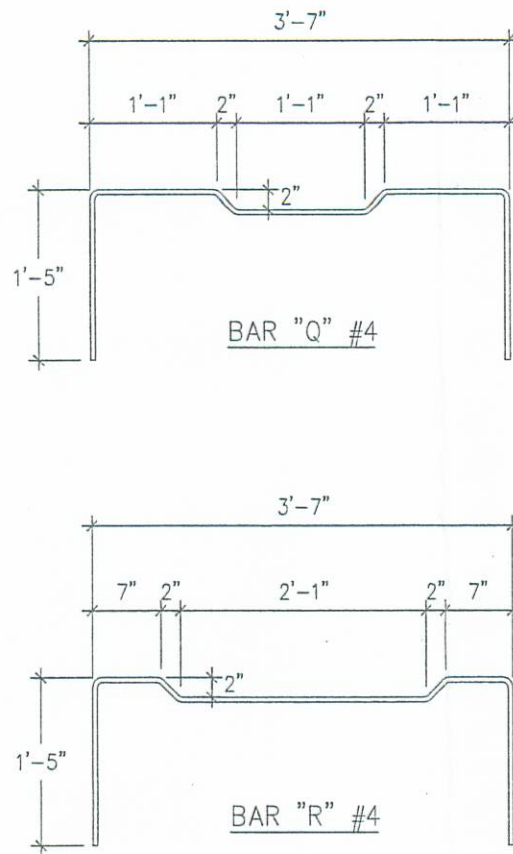
PARTIAL BEAM PLAN (SHOWING STIRRUP SPACING)



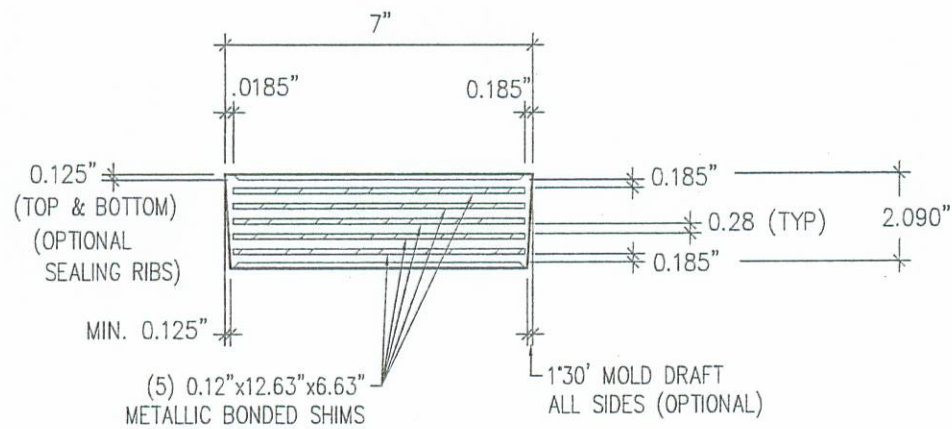
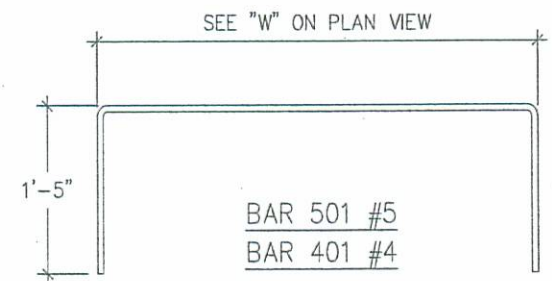
STEEL DETAILS		
LOGAN COUNTY, OHIO		
BR# 96-2.70		
C.R. 96 / SOUTH FORK MIAMI RIVER		
CONTRACTOR: COUNTY FORCES		
	PRODUCING PLANT:	DRAFTING OFFICE:
	State Route 8 MELBOURNE, KY 41059 PH: (859) 441-0068 FAX: (859) 441-7986	P.O. BOX 211 MELBOURNE, KY 41059 PH: (859) 441-0068 FAX: (859) 441-7986
DATE: 10-7-03	DRAWN BY: DRA	CHECKED: GDA
REVISIONS		
CODE: B42480	SHEET: 3 of 5	JOB NO: D3279



PLAN VIEW



BENDING DIAGRAM



SECTION Y-Y  
BEARING PAD DETAILS

STIRRUP QUANTITIES PER BEAM		
MARK	BAR SIZE	NO. REQD.
BAR Q	# 4	117
BAR R	# 4	118
BAR T	# 4	126
501	# 5	6
502	# 5	6
503	# 5	6
401	# 4	6
402	# 4	6



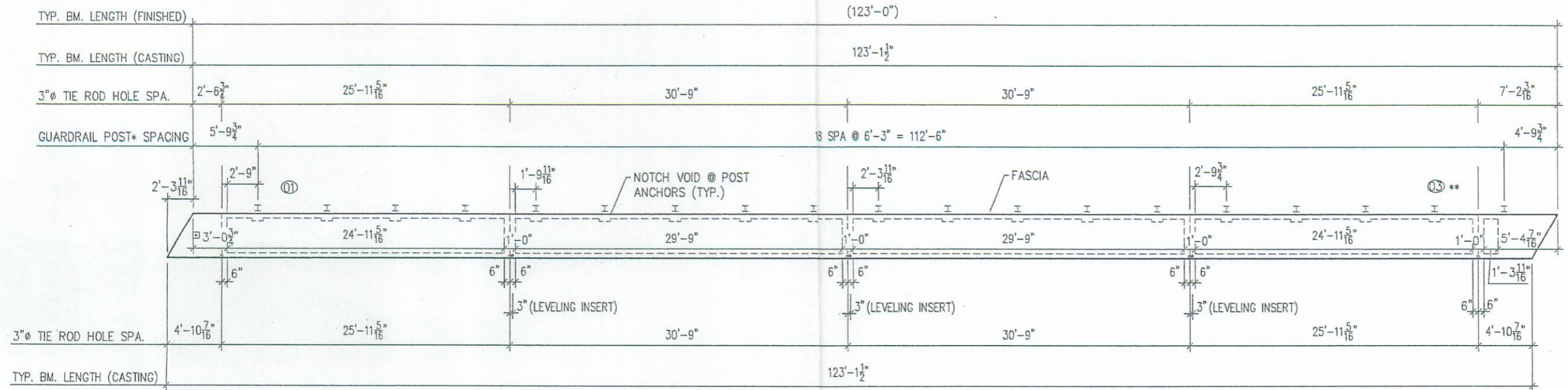
STEEL & DETAILS		
LOGAN COUNTY, OHIO		
BR# 96-2.70		
C.R. 96 / SOUTH FORK MIAMI RIVER		
CONTRACTOR: COUNTY FORCES		
<b>PSi</b> Progress Services	PRODUCING PLANT:	DRAFTING OFFICE:
	State Route 8 MELBOURNE, KY 41059 PH: (859) 441-0068 FAX: (859) 441-7986	P.O. BOX 211 MELBOURNE, KY 41059 PH: (859) 441-0068 FAX: (859) 441-7986
DATE: 10-7-03	DRAWN BY: DRA	CHECKED: GDA
REVISIONS		
CODE: B42480 SHEET: 4 of 5 JOB NO: D3279		

gadams

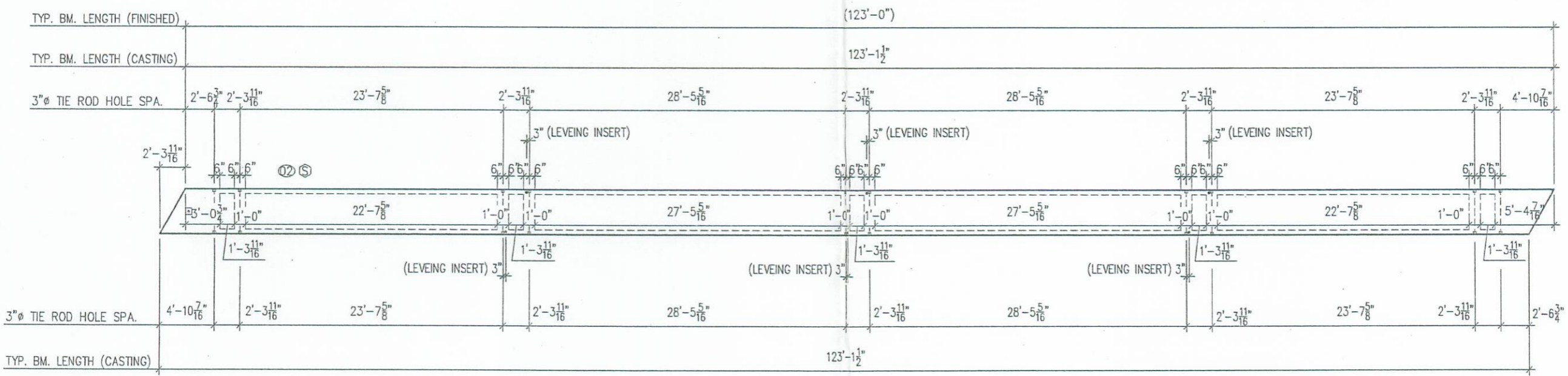
D32791.c0H.dwg-5 of 5

12:32 PM

10-24-03



TIE ROD / VOID LAYOUT MKS. 01 & 03 (1 REQD. EA. THUS) WT. = 128,600 LBS.



TIE ROD / VOID LAYOUT MK. 02 (4 REQD. THUS) WT. = 131,100 LBS.

\*POSTS, RAIL, & TUBULAR  
 BACK-UP BY PSM.  
 POSTS SHIPPED INSTALLED -  
 REMAINDER SHIPPED LOOSE.

⊙ = BEAM IS SYMMETRICAL

\*\*DENOTES "IDENTICAL BY  
 180° ROTATION"



BEAM LAYOUTS		
LOGAN COUNTY, OHIO		
BR# 96-2.70		
C.R. 96 / SOUTH FORK MIAMI RIVER		
CONTRACTOR: COUNTY FORCES		
	PRODUCING PLANT: State Route 8 MELBOURNE, KY 41059 PH: (859) 441-0068 FAX: (859) 441-7986	DRAFTING OFFICE: P.O. BOX 211 MELBOURNE, KY 41059 PH: (859) 441-0068 FAX: (859) 441-7986
	DATE: 10-7-03	DRAWN BY: DRA
REVISIONS		
CODE: B42480	SHEET: 5 of 5	JOB NO: D3279