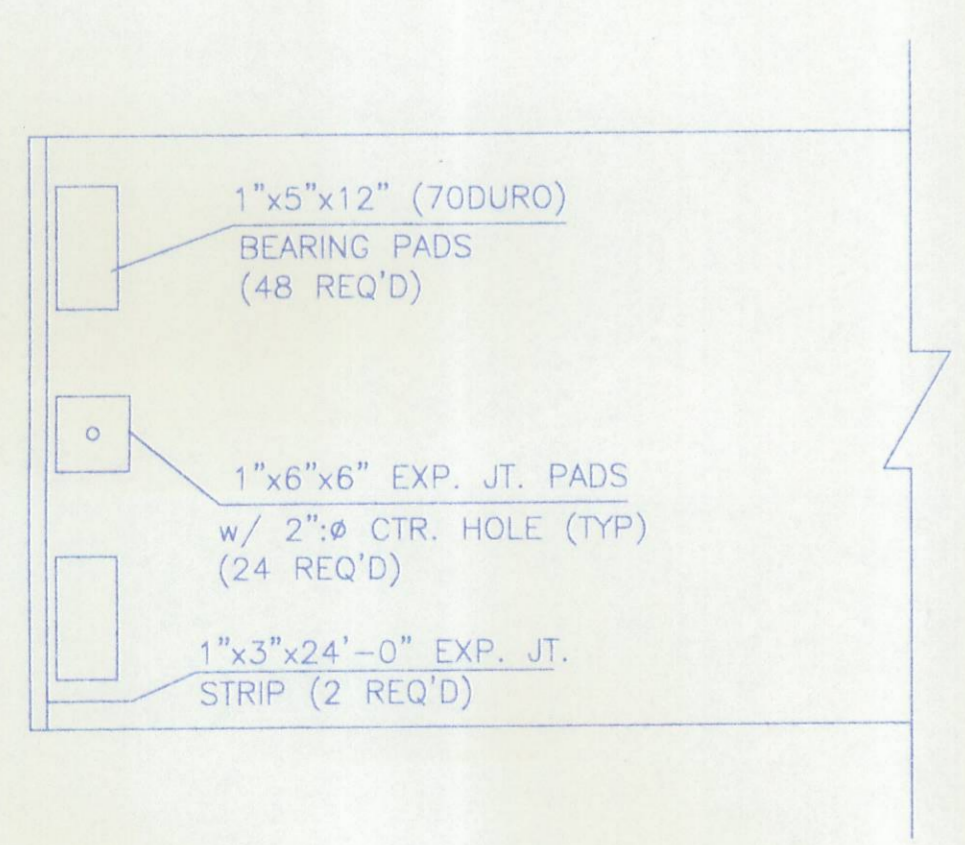
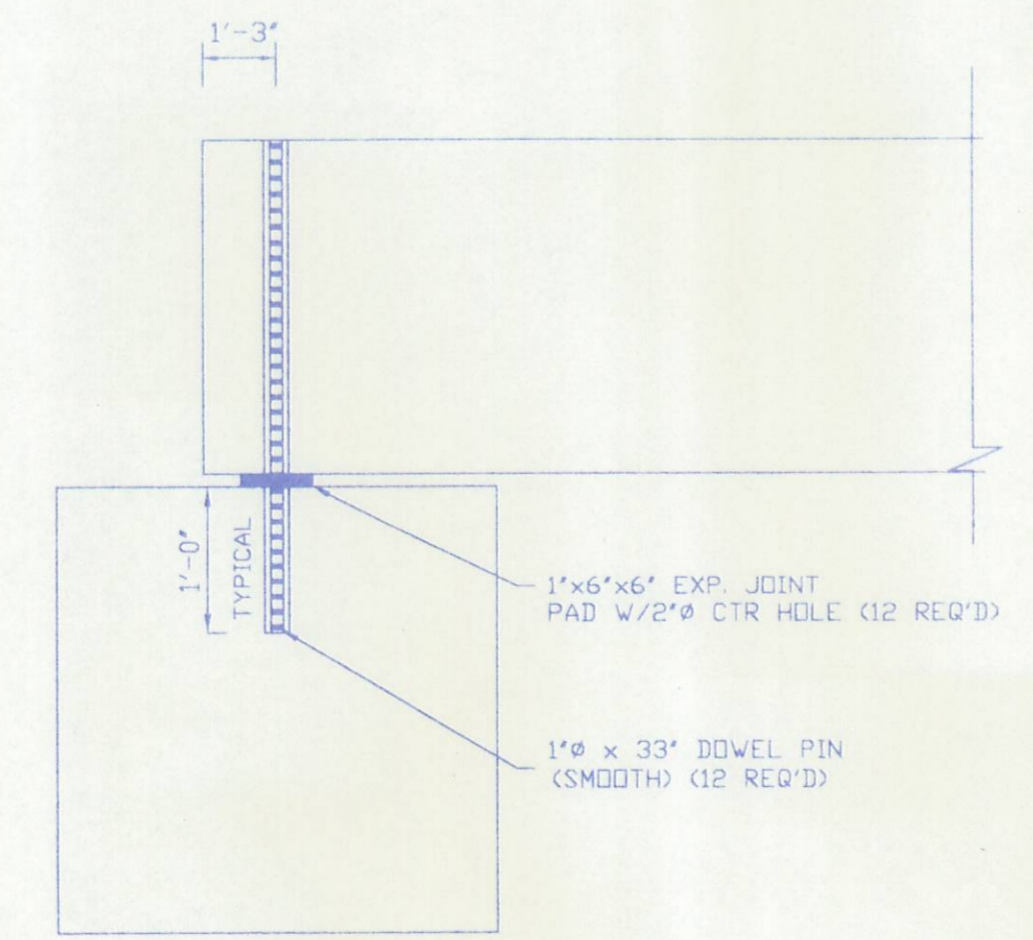


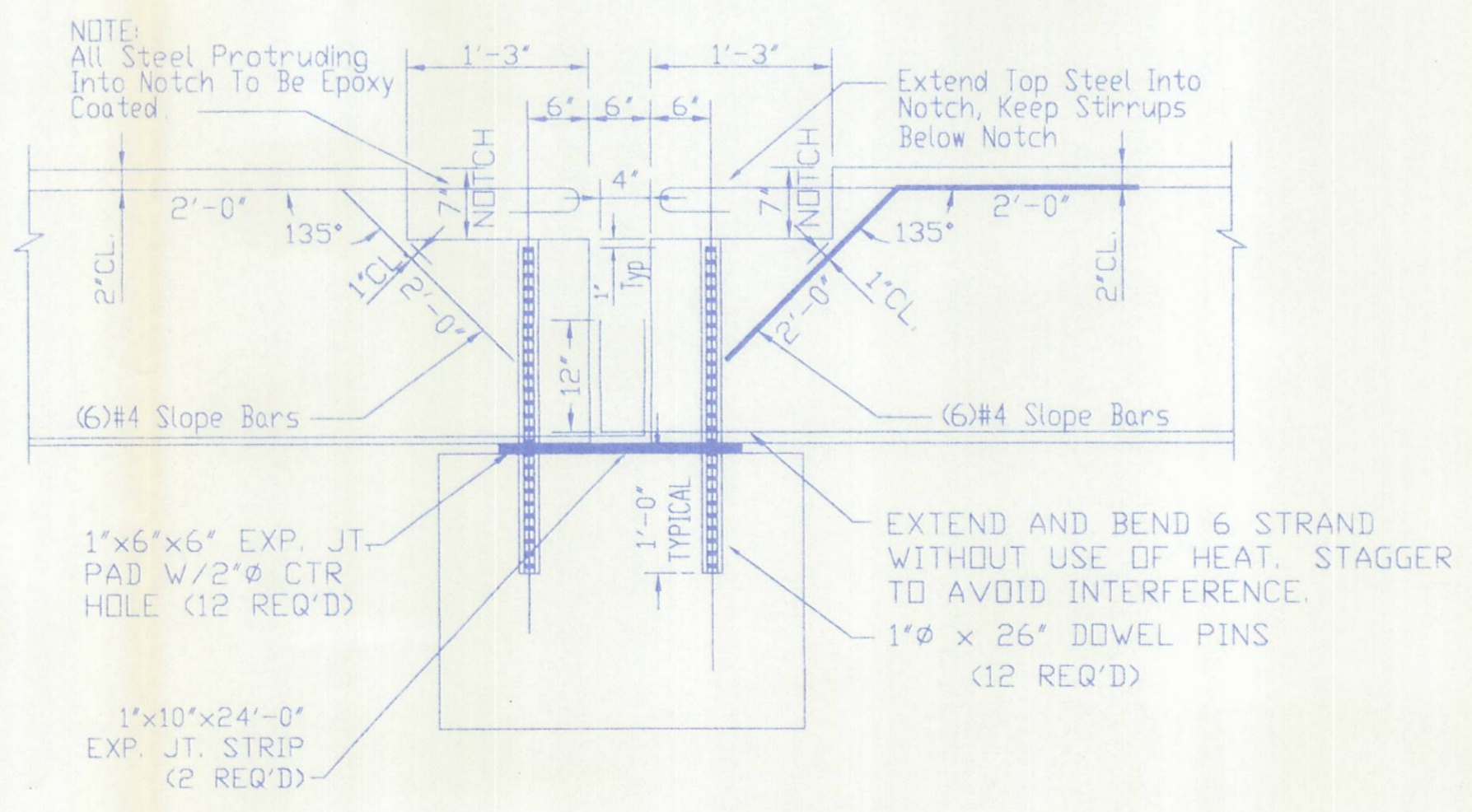
BEAM LAYOUT



BEARING PAD PLACEMENT DETAIL



ABUTMENT END DETAIL  
(SECTION A-A)



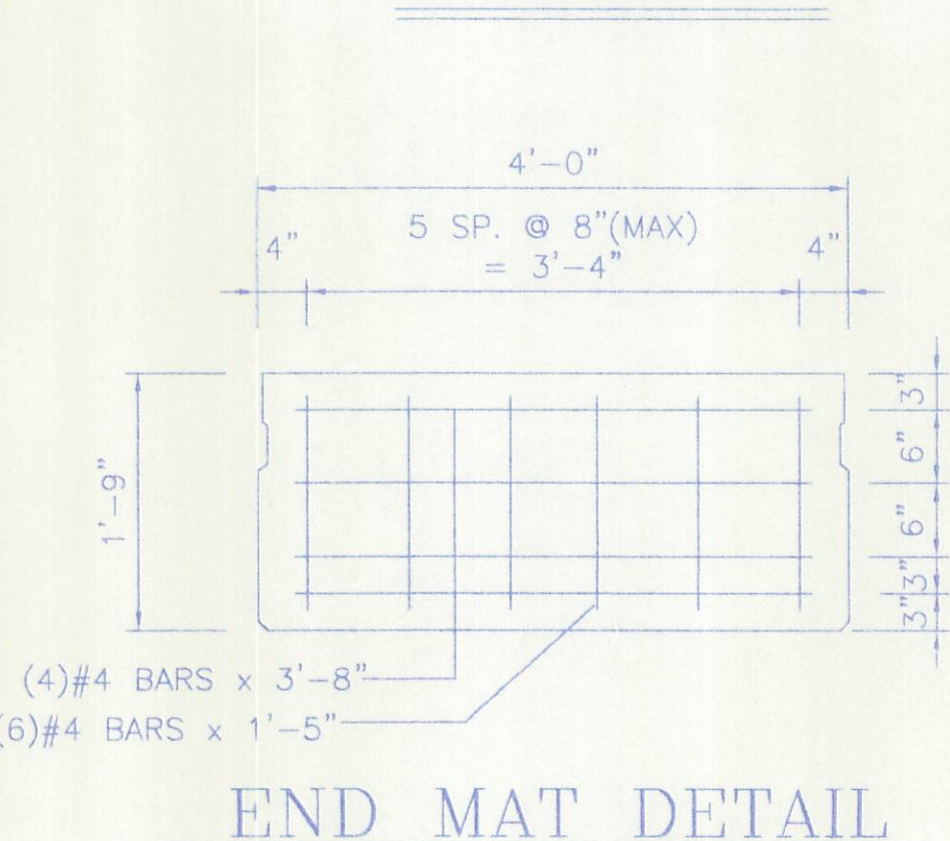
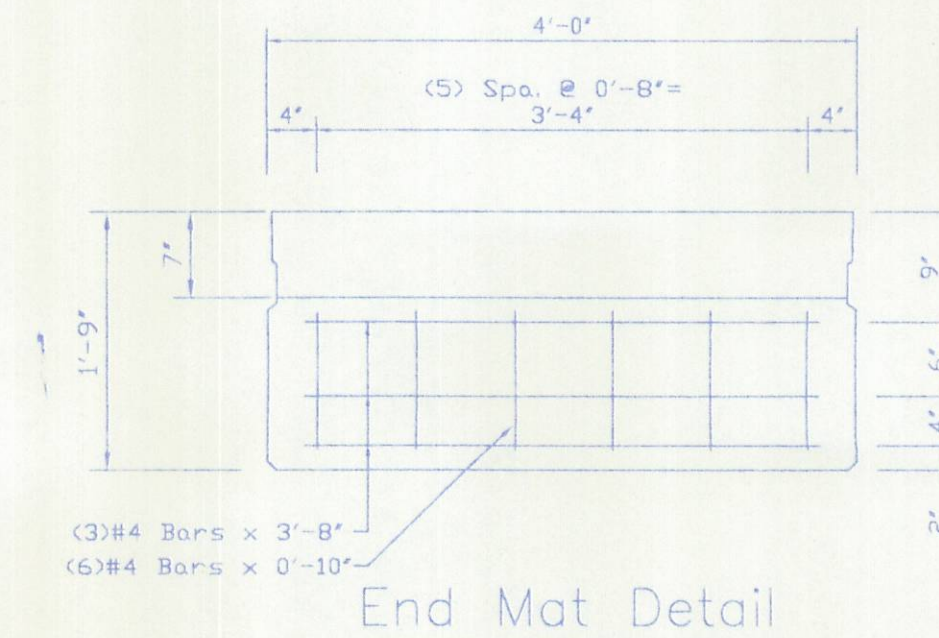
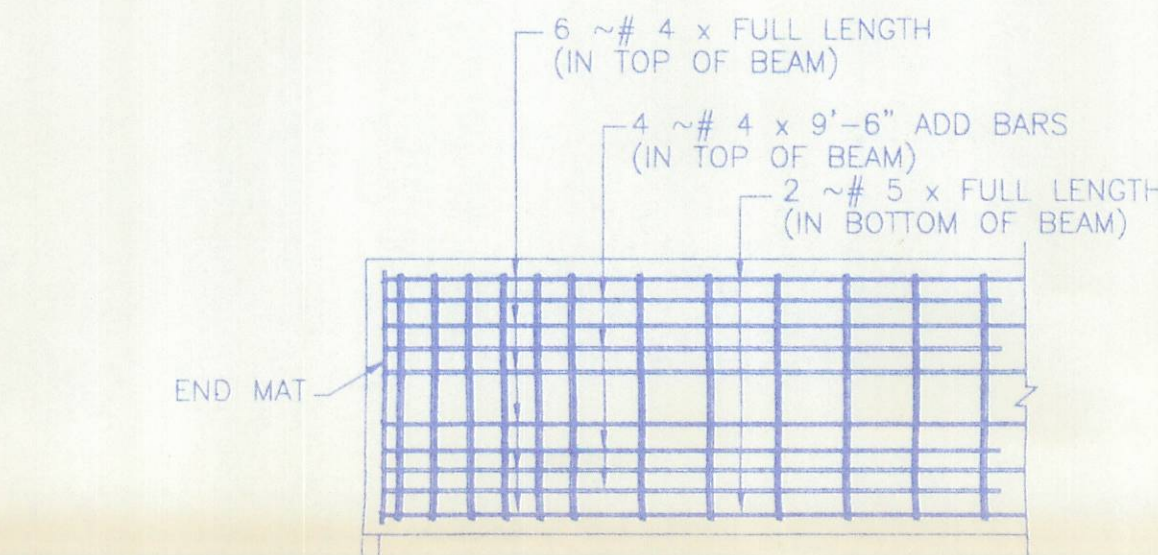
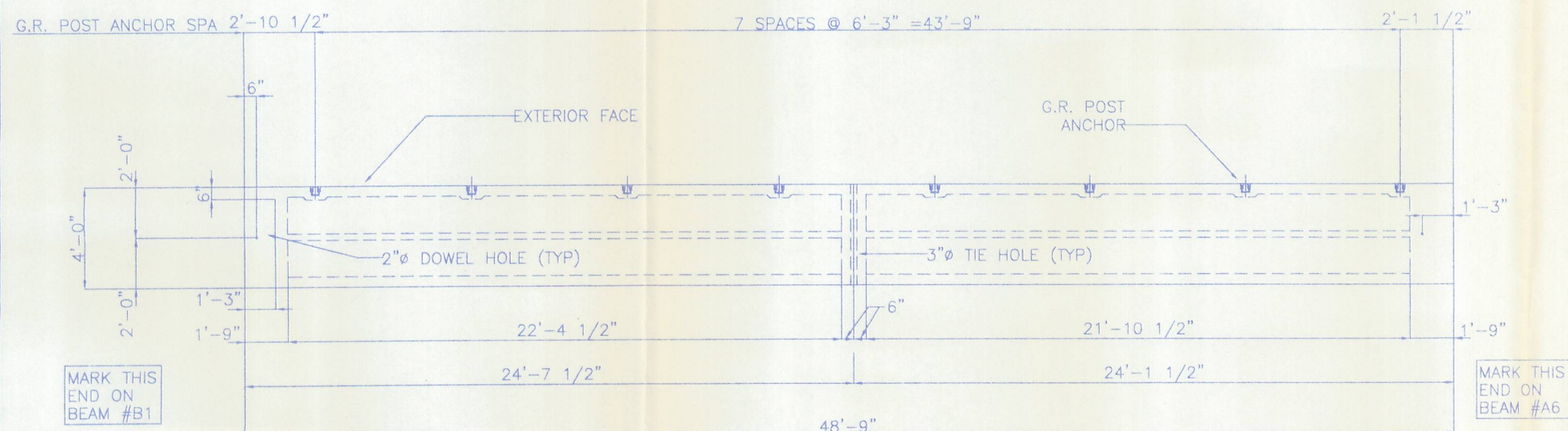
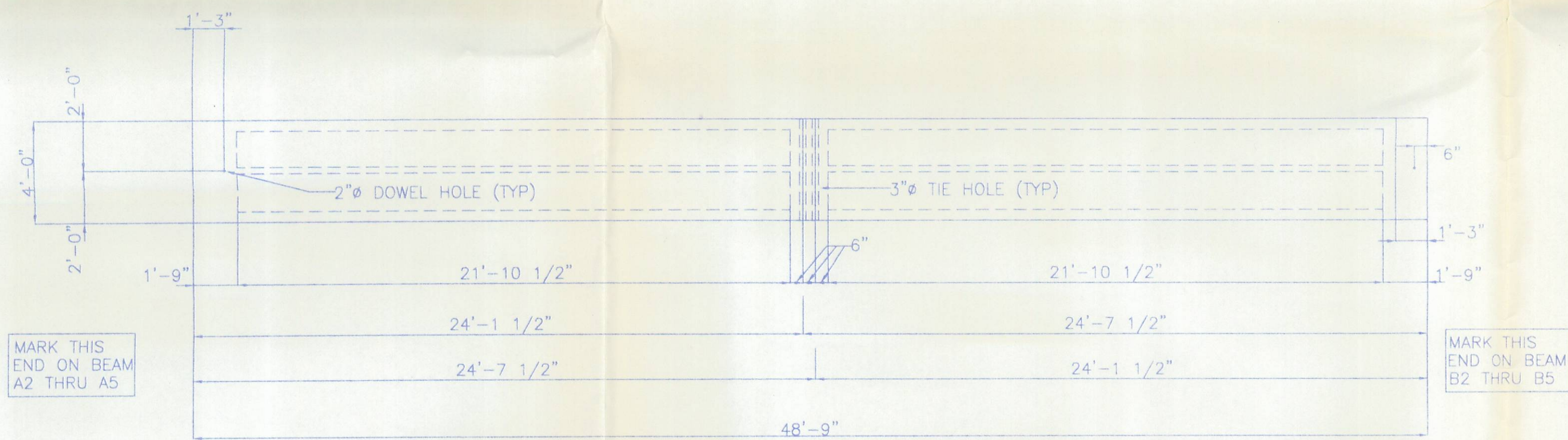
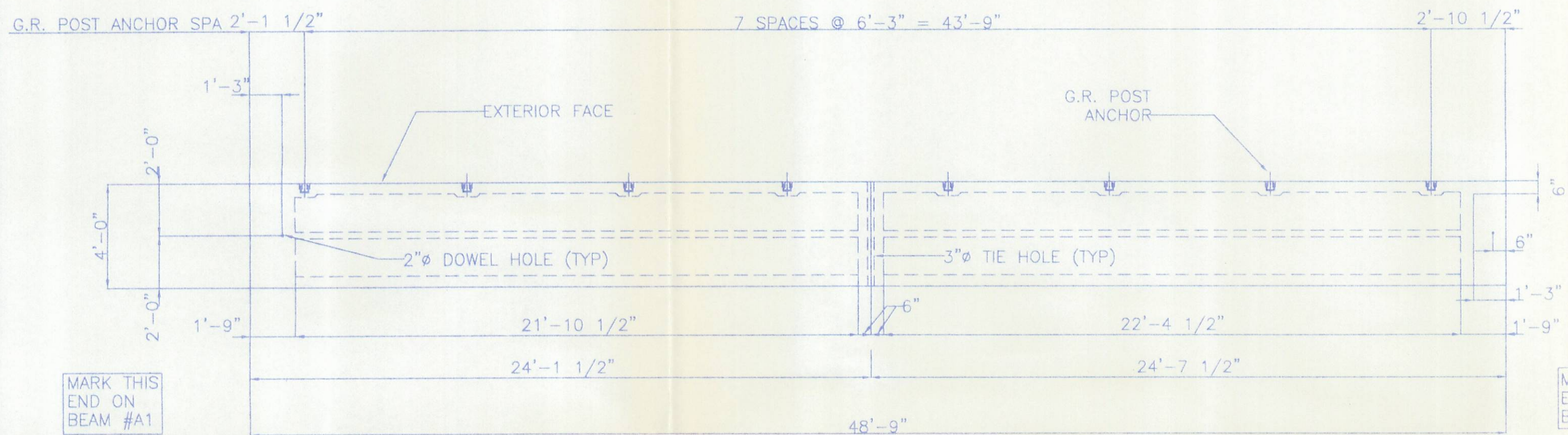
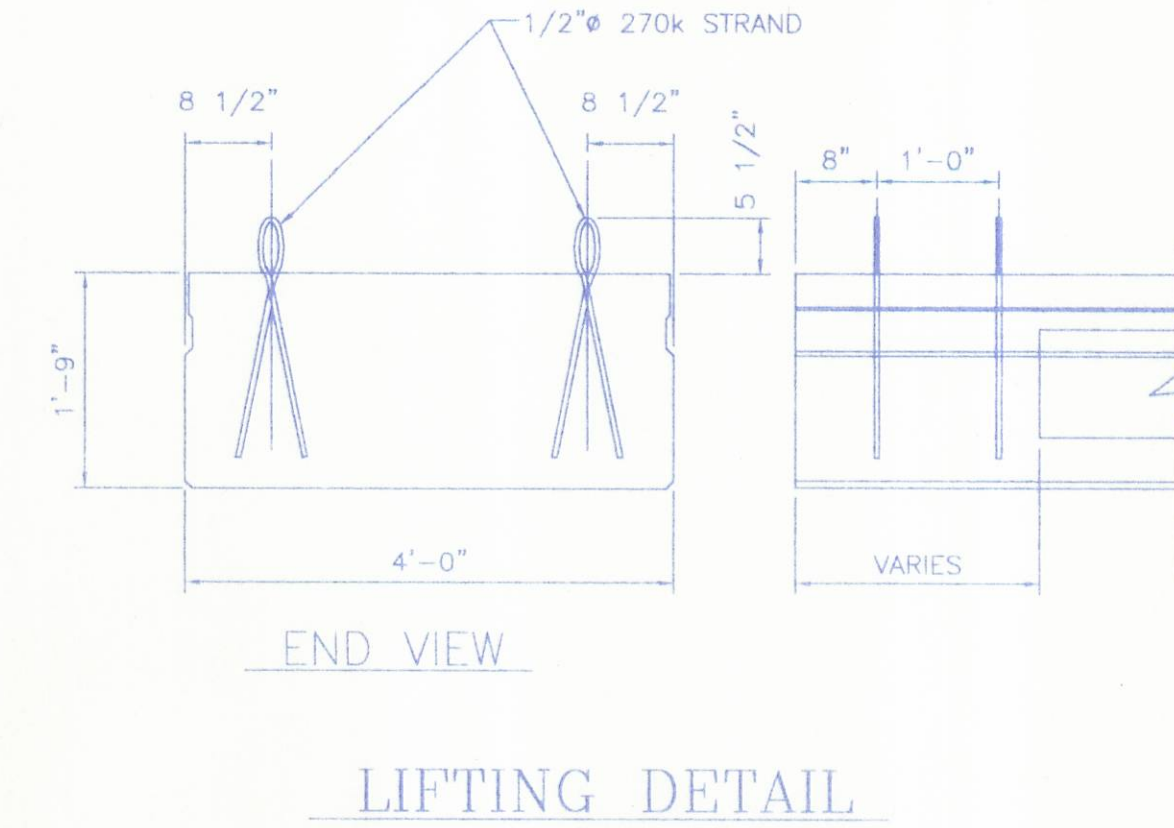
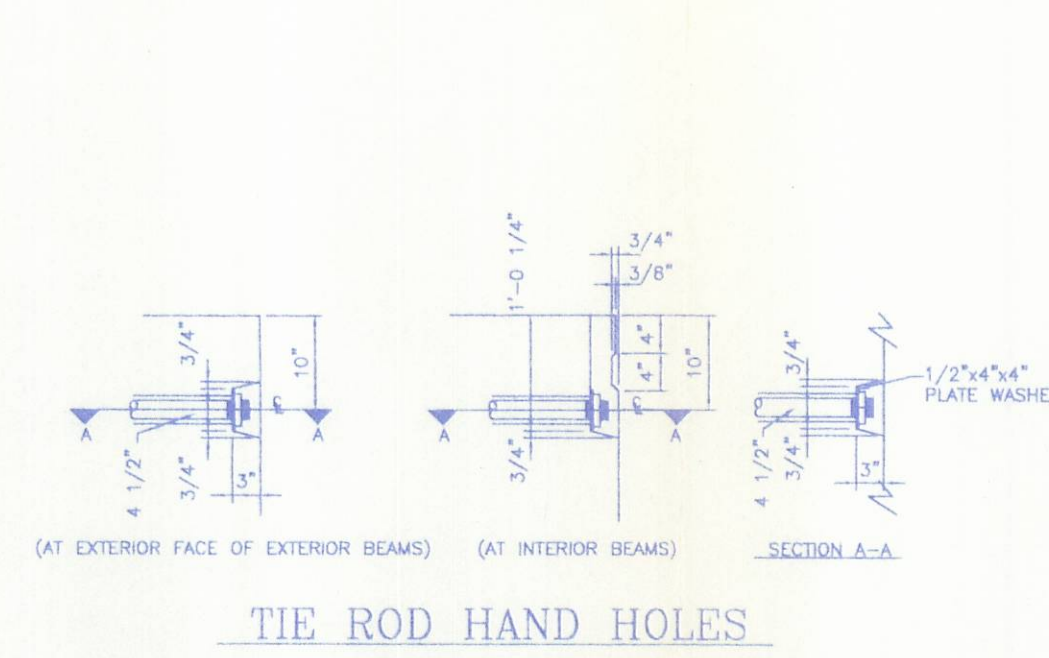
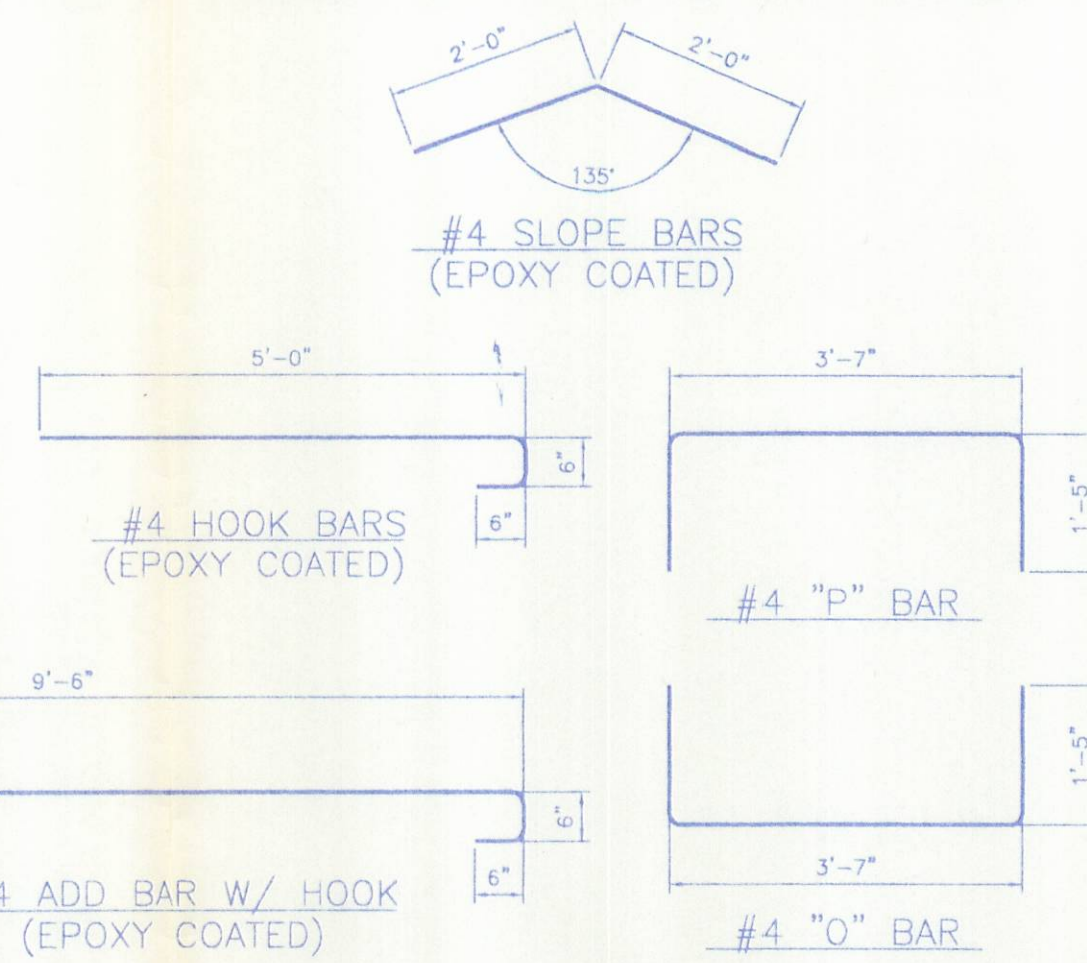
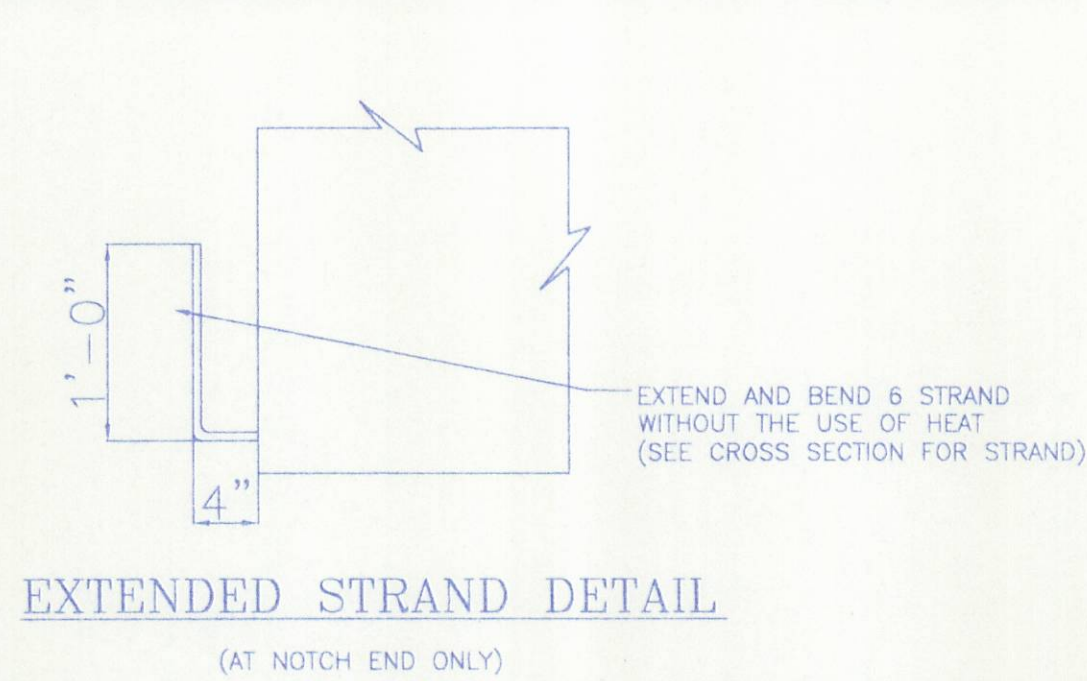
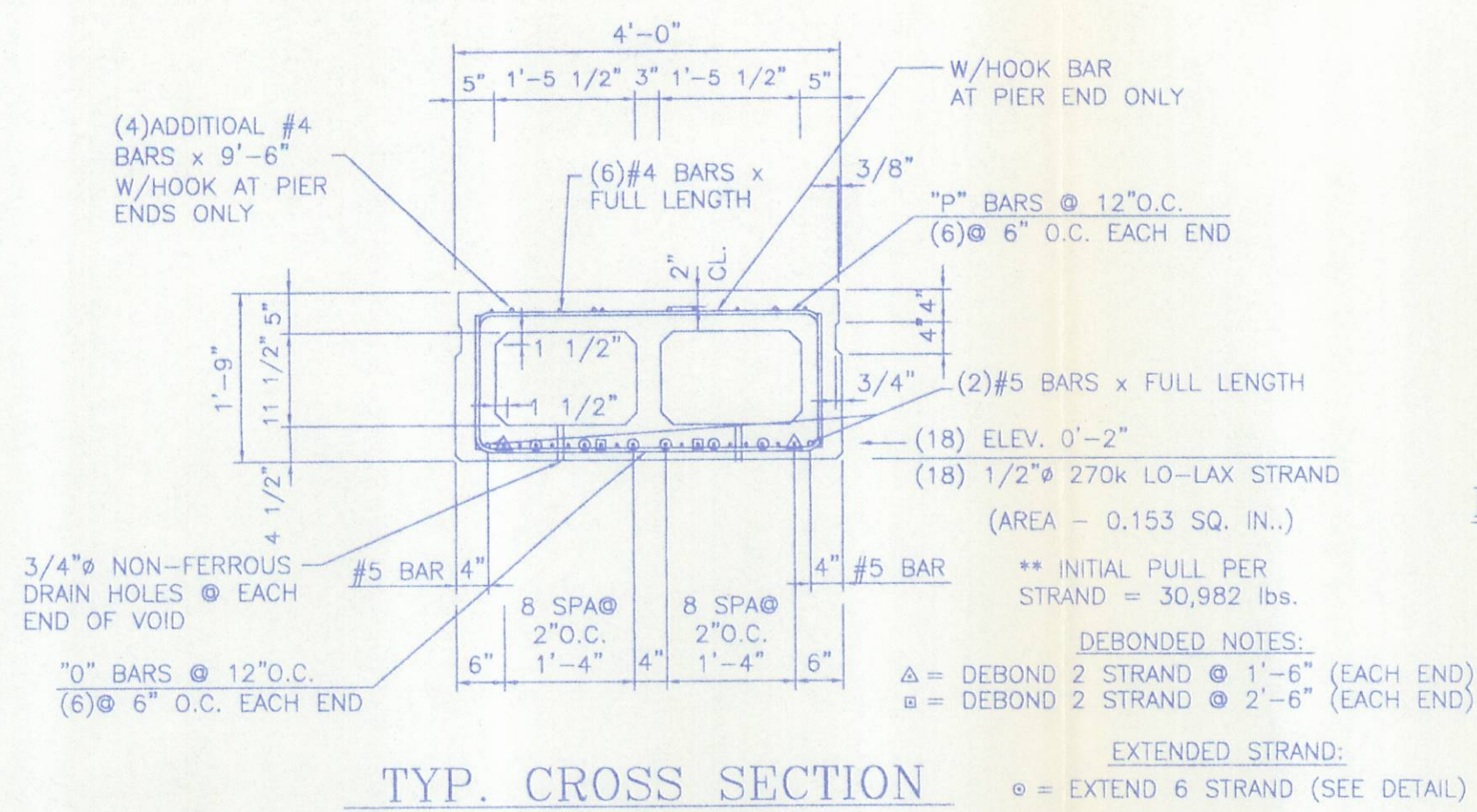
PIER END DETAIL  
(SECTION B-B)

**APPROVED**

APPROVED  
BY LOGAN CO. ENGINEER  
*[Signature]*

REVISIONS				Proj. LOGAN COUNTY JOB	
NO.	Description	Date	By	Br. No. 87-0.76	
				County, State: LOGAN COUNTY, OHIO	
				Location:	
				Contractor: LOGAN COUNTY FORCES	
				Fabrication Plant :	DRAFTING OFFICE :
				PRESTRESS SERVICES INC.	PRESTRESS SERVICES
				P.O. BOX 111, 7855 N.W. WINCHESTER ROAD	DECATUR INDIAN
				DECATUR, INDIANA . 46733	Ph# (219) 724-7117
				PHONE # : (219) 724-7117	Fax # (219) 724-3349
				FAX # : (219) 724-3349	Job No.
Date: 6/30/99					Drawing No.
Drawn By: T.M.D.					D9192
Checked By: <i>[Signature]</i>					1 OF
P.C.# B21480					





- NOTES:**
- CONCRETE STRENGTH AT TIME OF PRESTRESSING IS 4000 P.S.I. AND AT 28 DAYS IS 5500 P.S.I.
  - DETENSION STRAND SYMMETRICALLY ABOUT CENTER LINE
  - LOADING= HS-20-44 & ALTERNATE MILITARY.
  - BEAM WEIGHT= SEE BEAM PLANS
  - TOP SURFACE OF BEAMS GIVEN A LIGHT BROOM FINISH
  - ANTICIPATED CAMBER AS SHOWN ON PROJECT PLANS IS: 1 7/8"
  - WATERPROOF BEAM ENDS AT ABUTMENT END ONLY.
  - OMIT KEYWAY ON EXTERIOR FACE OF EXTERIOR BEAMS.
  - SANDBLAST ALL KEYWAYS (4 DAYS BEFORE SHIPPING)
  - D. C. I. TO BE ADDED TO CONCRETE (AT THE RATE OF 4 GAL PER cu. yd.)
  - ALL REINFORCING STEEL TO BE GRADE 60 STEEL
  - EXTENDED STRAND IS REQ'D ON THESE BEAMS AT PIER ENDS ONLY
  - SHOP DRAWINGS ARE PER DESIGN DRAWINGS AND 1997 SPECIFICATIONS
  - 1/2" @ 270 SEVEN WIRE UNCOATED LOW-RELAXATION STRAND, AREA = .153 sq. in. GRADE 270. INITIAL PULL PER STRAND IS 30,982 lbs

CHANGE NOTES

- CHANGES ARE NOTED AS DIFFERENT FROM O.D.D.T. STD. DWG. P.S.B.D.-1-93 AND ARE VARIED PER. NOTE ON P.S.B.D.-1-93 SHT. 2 OF 4.
- 3/4" Keyway To 4/4" Keyway.
  - Tie Rod Hand Hole From 9' To 10'

REVISIONS			Proj. _____ LOGAN COUNTY JOB	
NO.	Description	Date/By	Br. No. _____ 87-0.76	County, State: _____ LOGAN COUNTY, OHIO
			Location: _____	
			Contractor: _____ LOGAN COUNTY FORCES	
Date: _____ 6/30/99			Fabrication Plant: _____ PRESTRESS SERVICES INC.	
Drawn By: _____ T.M.D.			DRAFTING OFFICE: _____ PRESTRESS SERVICES	
Checked By: _____			DECATUR INDIANA	
P.C.# _____ B21480			Ph# (219) 724-7117	
			Fax # (219) 724-3349	
			Job No. _____	
			Drawing No. _____ 2 OF 2	