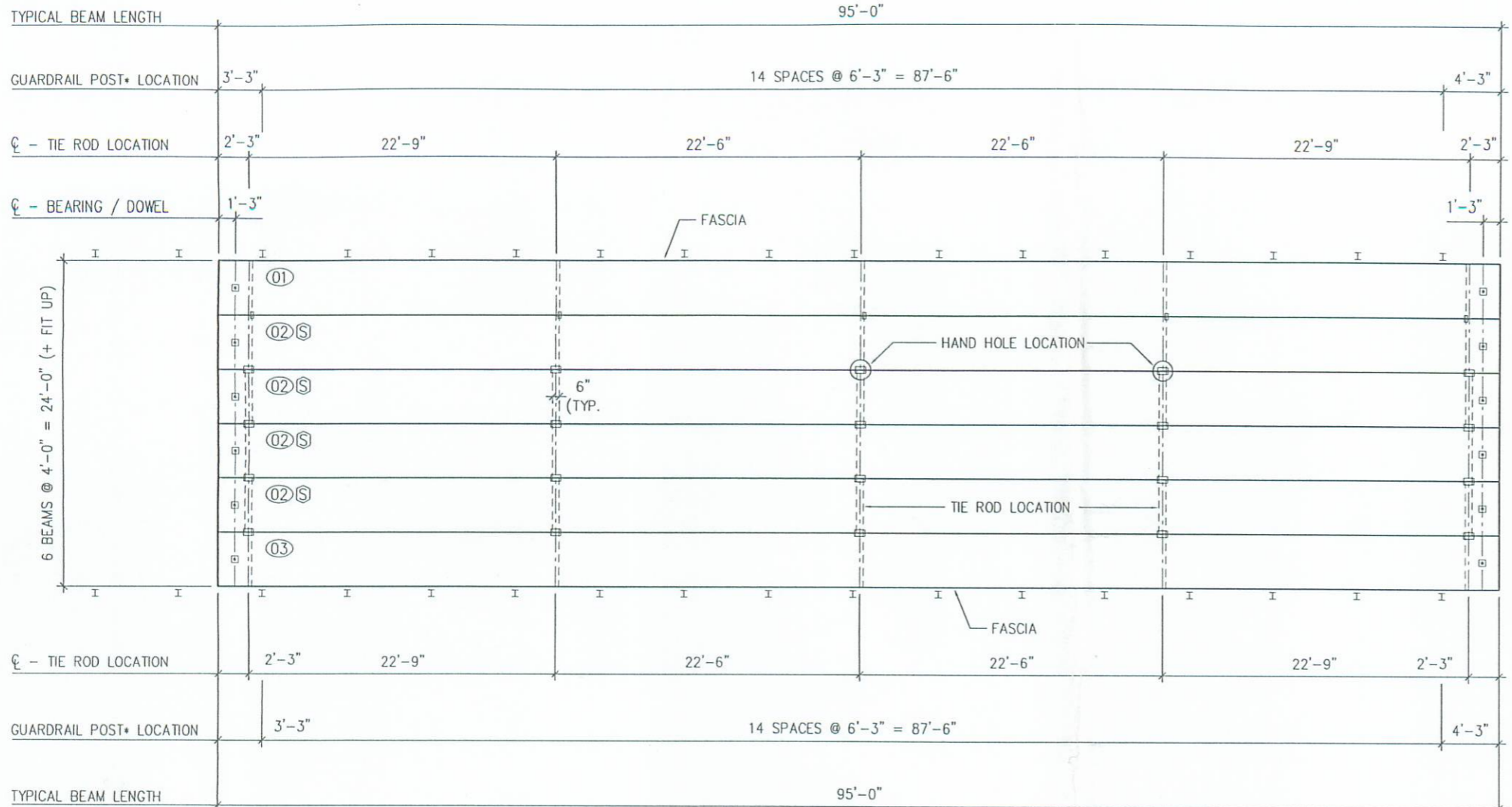


D5175_RevPrelim.dwg-Layout1

11:32 AM

06-17-05



BRIDGE PLAN
 S = BEAM IS SYMMETRICAL

**** GUARDRAIL NOTE:**
 POSTS, RAIL, TUBULAR BACK-UP & (8) APPROACH POSTS BY PSI. SHIP POSTS INSTALLED REMAINDER SHIPPED LOOSE

APPROVED
BY LOGAN CO. ENGINEER
Kristin J. King, PE 6/21/2005

- NOTE:**
 PSI SHALL FURNISH, INCIDENTAL TO BEAMS:
- (10) 1"Ø X 12'-0" TIE RODS
 - (5) 1"Ø X 8'-0" TIE RODS
 - (30) 1/2" X 4" SQ. PL WASHERS (FOR TIE RODS)
 - (30) 1"Ø HEX NUTS (FOR TIE RODS)
 - (12) 1"Ø X 4'-7" SMOOTH DOWEL RODS (GALV. A-311), THRD C
 - (12) 1"Ø HEX NUTS FOR DOWELS
 - (12) 1/2" X 4" SQ. PL WASHERS (FOR DOWELS)
 - (12) 2" X 6" X 6" PEJF GROUT RETAINERS
 - (24) ELASTOMERIC BEARING PADS (2 1/16" X 7" X 11" SEE LAMINATED DETAIL SHT 3)
 - (68 LF.) 8 STRAND JUTE INTERPLAST - N
- 30 ODOT TYPE 2 POSTS, INSTALLED USING:**
- (120) 1 1/4"Ø X 8" STUDS (All Thrd)
 - (240) 1 1/4"Ø HEX NUTS
 - (240) WASHERS
 - (200 LF) STD. DEEP BEAM GUARDRAIL (SHIP LOOSE)
 - (200 LF) STD. TUBULAR BACK-UP (SHIP LOOSE)
 - (8) W6 X 25 APPROACH POSTS

GENERAL NOTES:

- 1) MANUFACTURE BEAMS IN ACCORDANCE WITH ODOT SPECIFICATIONS.
- 2) MINIMUM CONCRETE STRENGTH @ RELEASE OF STRAND = 4,000 P.S.I.
 MINIMUM CONCRETE STRENGTH @ 28 DAYS = 5,500 P.S.I.
- 3) STRAND SHALL BE (7) WIRE, UNCOATED, LOW RELAXATION, 1/2" "REGULAR" DIA. (As = 0.153 SQ. IN.), 270 K.S.I. ULTIMATE STRENGTH, ASTM A-416.
- 4) PULL EACH STRAND TO 30,983 LBS.
- 5) STEEL GRADE 60, A.S.T.M. A-615.
- 6) DESIGN LOADING HS20-44 & THE ALTERNATE MILITARY.
- 7) ALL ANCHOR BOLTS, STUDS, INSERTS, TIE RODS, NUTS, & WASHERS SHALL BE GALVANIZED, PER ODOT SPECIFICATIONS.
- 8) KEYWAYS SHALL BE GIVEN A MEDIUM SANDBLAST AT THE PLANT WITHIN FOUR DAYS PRIOR TO SHIPPING BEAMS.
- 9) KEYWAYS SHALL BE OMITTED AT FASCIA SIDE OF EXTERIOR BEAMS.
- 10) BROOM FINISH TOPS OF BEAMS.
- 11) CONCRETE MIX SHALL CONTAIN RUSSTEC'S RCI CORROSION INHIBITOR; DOSAGE SHALL BE BE 4 GALLONS PER CUBIC YARD OF CONCRETE.
- 12) BEAM ENDS (ENTIRE) SHALL BE SEALED WITH BITUMINOUS COATING.

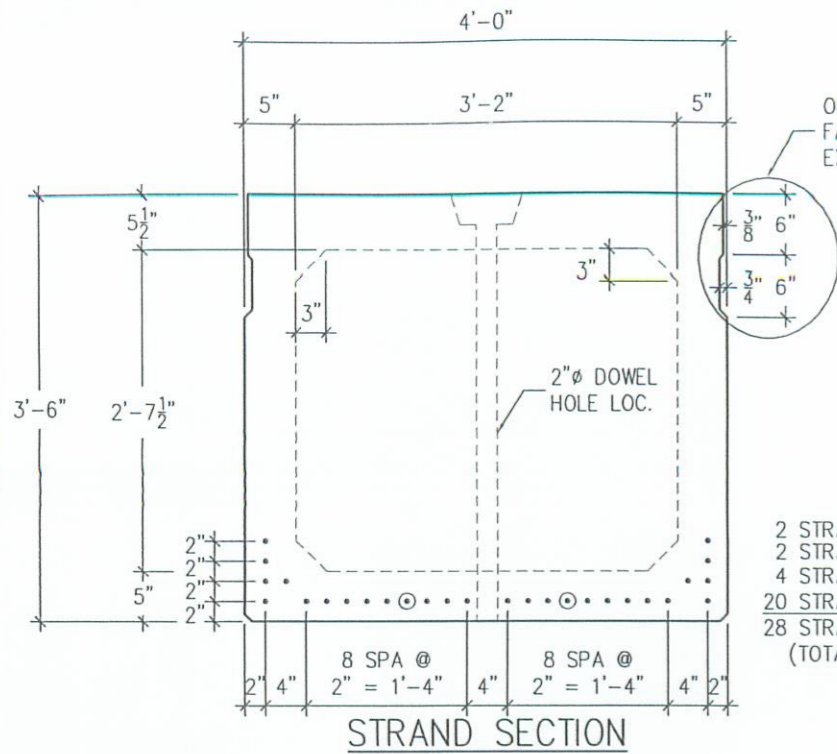
BEAM MARK	NO. REQD.	WEIGHT
01	1	99,003 LBS.
02	4	97,173 LBS.
03*	1	99,003 LBS.

STANDARD ERECTION PROCEDURE:

ALL LIFTING LOOPS SHOWN MUST BE USED SIMULTANEOUSLY AND EQUALLY, 90° TO THE BEAM, WHILE ERECTING WITH 2 CRANES. ANY DEVIATION FROM THIS STANDARD FOR ERECTING PURPOSES IS THE RESPONSIBILITY OF THE CONTRACTOR. THE CONTRACTOR IS ADVISED TO HAVE AN ENGINEER REVIEW ANY DEVIATION FROM THIS STANDARD WITH CONSIDERATION GIVEN TO BEAM STRESSES, STRENGTH AND STABILITY. PRESTRESS SERVICES INC. WILL NOT BE LIABLE FOR ANY VARIATIONS TO THE STANDARD PROCEDURE.

RECEIVED
 JUN 20 2005
 LO. CO. ENGINEER

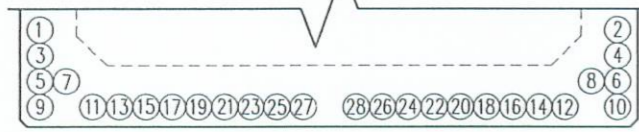
PRESTRESS SERVICES <small>INDUSTRIAL, INC.</small>			
PROJECT OVERVIEW			
LOGAN COUNTY, OHIO BRIDGE NO. 85-0.26 TR 85 / WILLOW CREEK			
CONTRACTOR: COUNTY FORCES			
PRODUCING PLANT: 7855 N.W. Winchester Rd Decatur, IN 46733 PH: (260) 724-7117 FAX: (260) 724-3349		DRAFTING OFFICE: P.O. BOX 211 MELBOURNE, KY 41059 PH: (859) 441-0068 FAX: (859) 441-7986	
REV. PREL. 6-17-05	DATE: 6-9-05	DRAWN BY: EDD	CHECKED: GDA
	REVISIONS		
CODE: B42x480		SHEET: 1 of 4	JOB NO: D5175



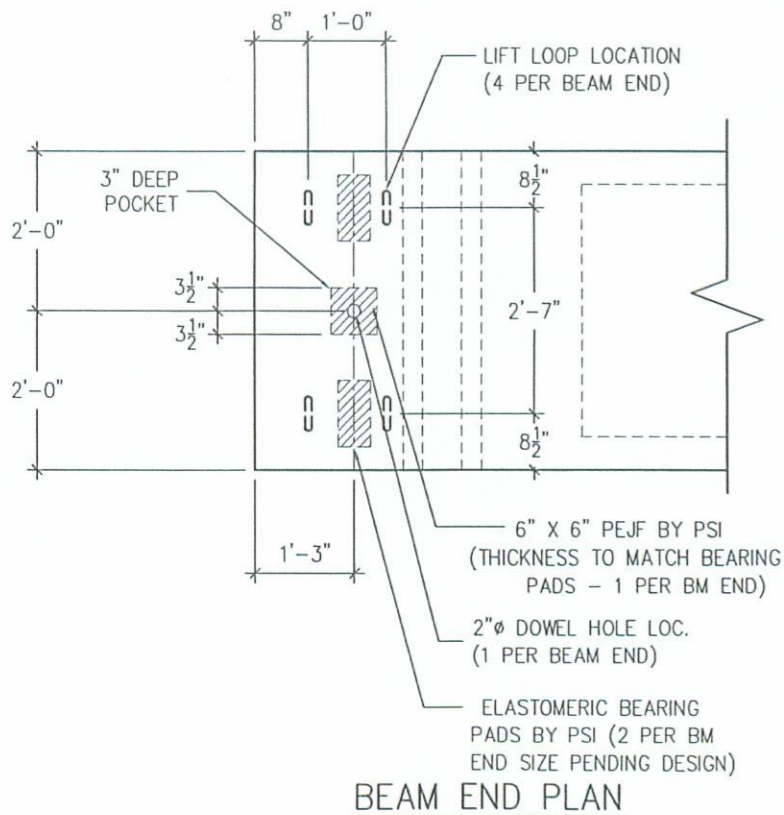
STRAND SECTION

OMIT KEYWAY @ FASCIA SIDE OF EXTERIOR BEAM

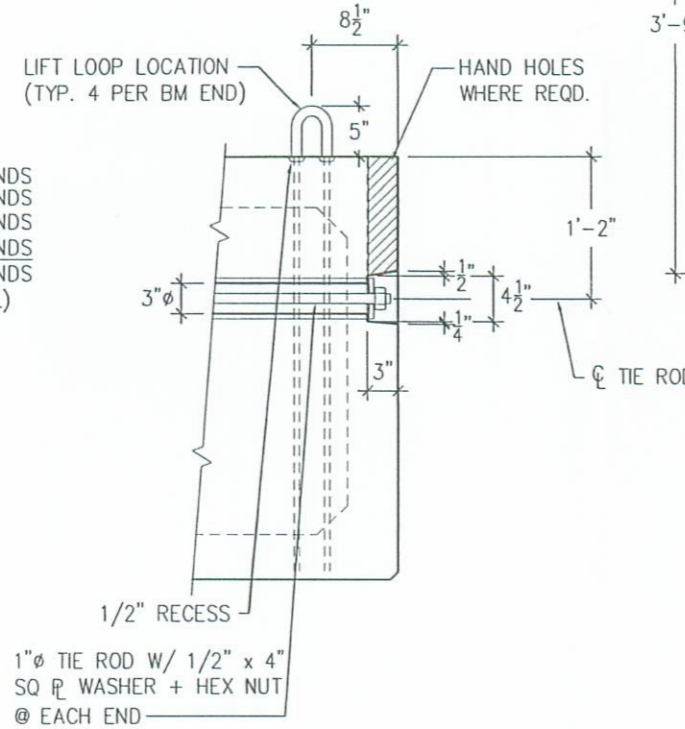
2 STRANDS
2 STRANDS
4 STRANDS
20 STRANDS
28 STRANDS (TOTAL)



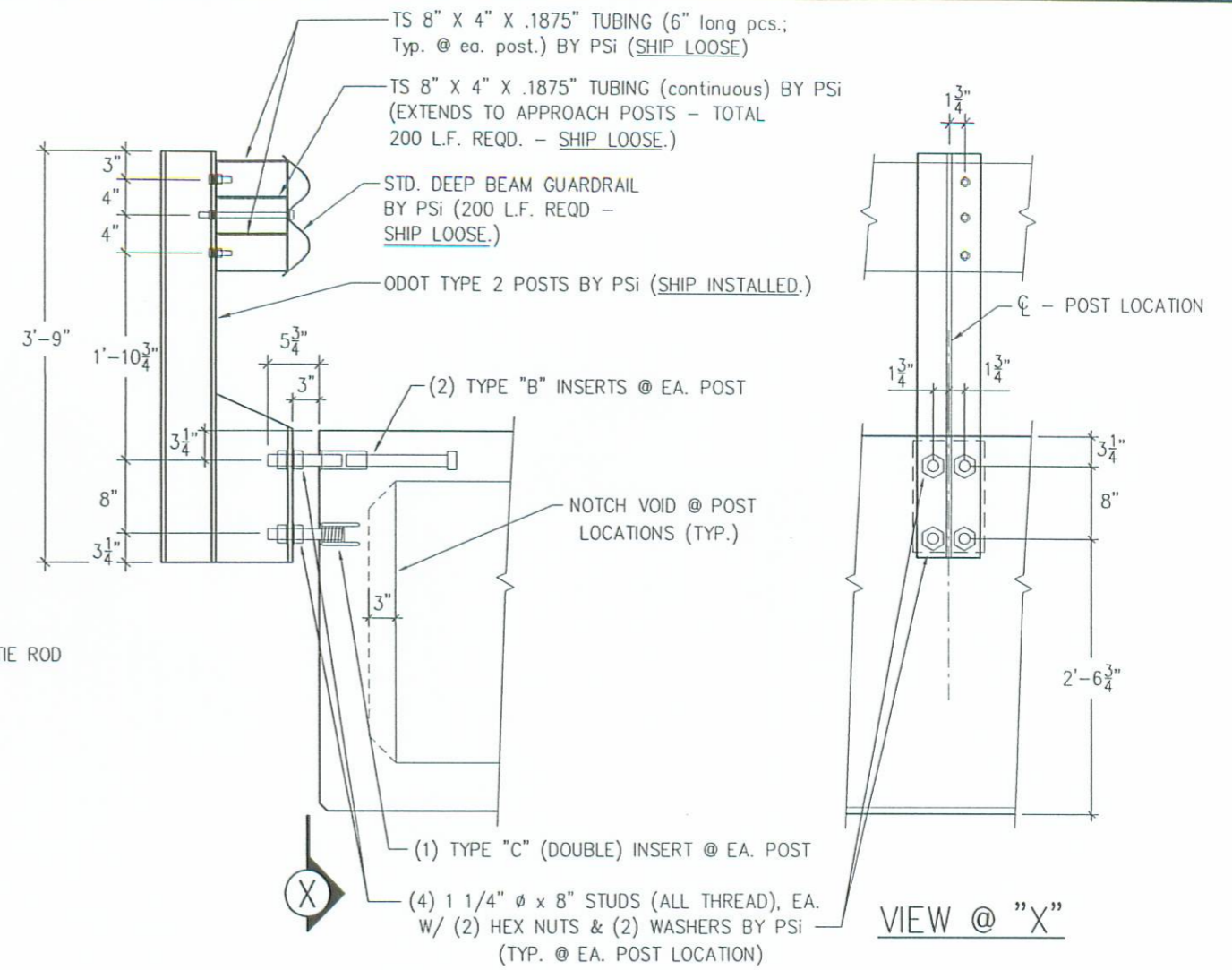
DETENSIONING PROCEDURE



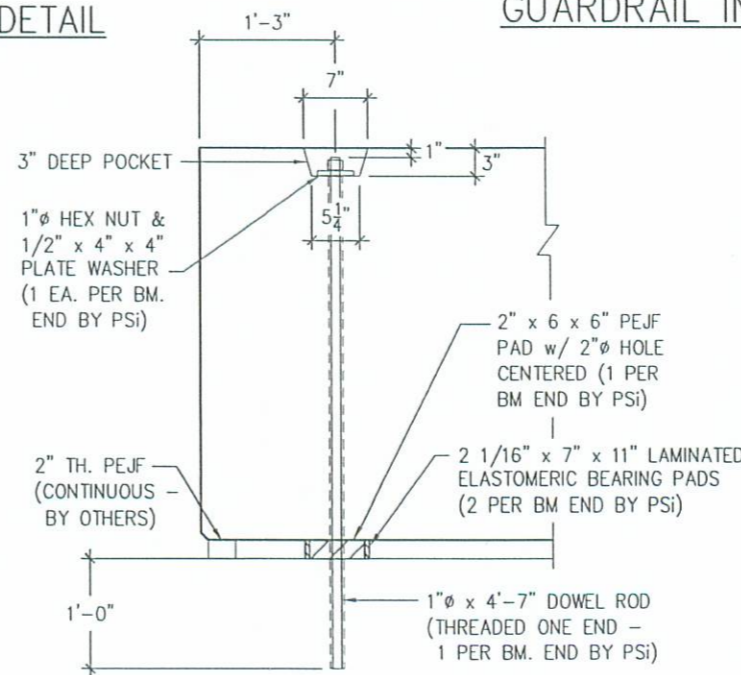
BEAM END PLAN



TIE ROD DETAIL



GUARDRAIL INSERT DETAIL



ABUTMENT END DETAIL (SHOWN PERPENDICULAR TO SKEWED END)

PRESTRESS SERVICES

STRAND & DETAIL

LOGAN COUNTY, OHIO
BRIDGE NO. 85-0.26
TR 85 / WILLOW CREEK

CONTRACTOR: COUNTY FORCES

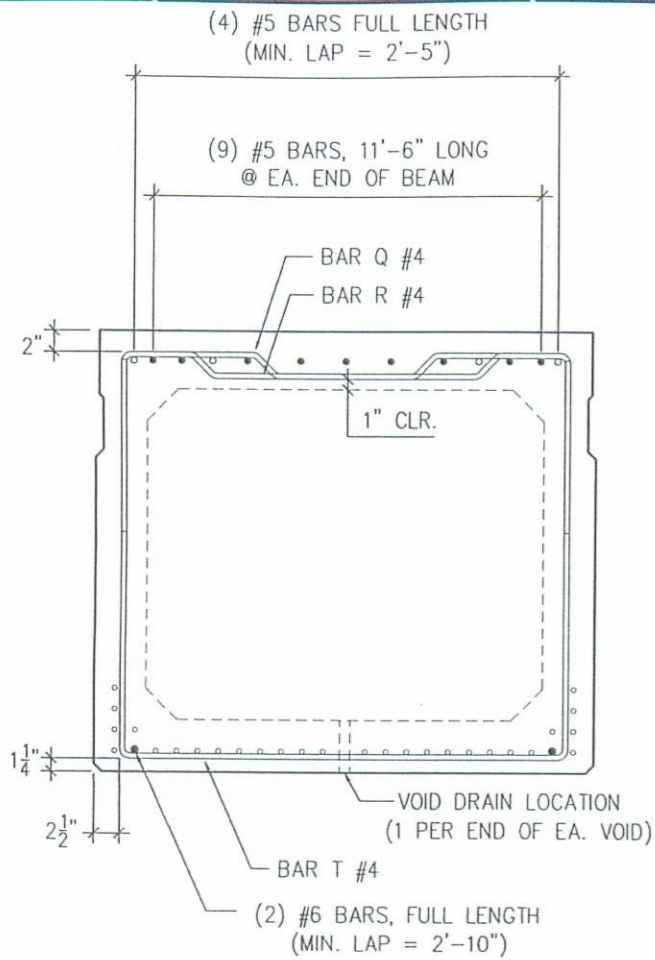
PRODUCING PLANT: 7855 N.W. Winchester Rd Decatur, IN 46733 PH: (260) 724-7117 FAX: (260) 724-3349	DRAFTING OFFICE: P.O. BOX 211 MELBOURNE, KY 41059 PH: (859) 441-0068 FAX: (859) 441-7986
---	--

REV. PREL. 6-17-05	DATE: 6-9-05	DRAWN BY: EDD	CHECKED: GDA
	REVISIONS		
	CODE: B42x480	SHEET: 2 of 4	JOB NO: D5175

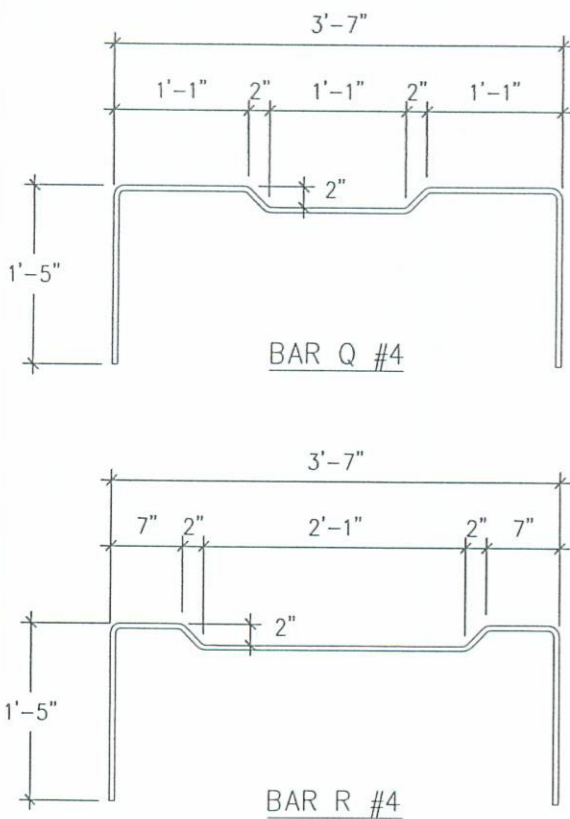
D5175_RevPrelim.dwg-Layout1 (3)

11:32 AM

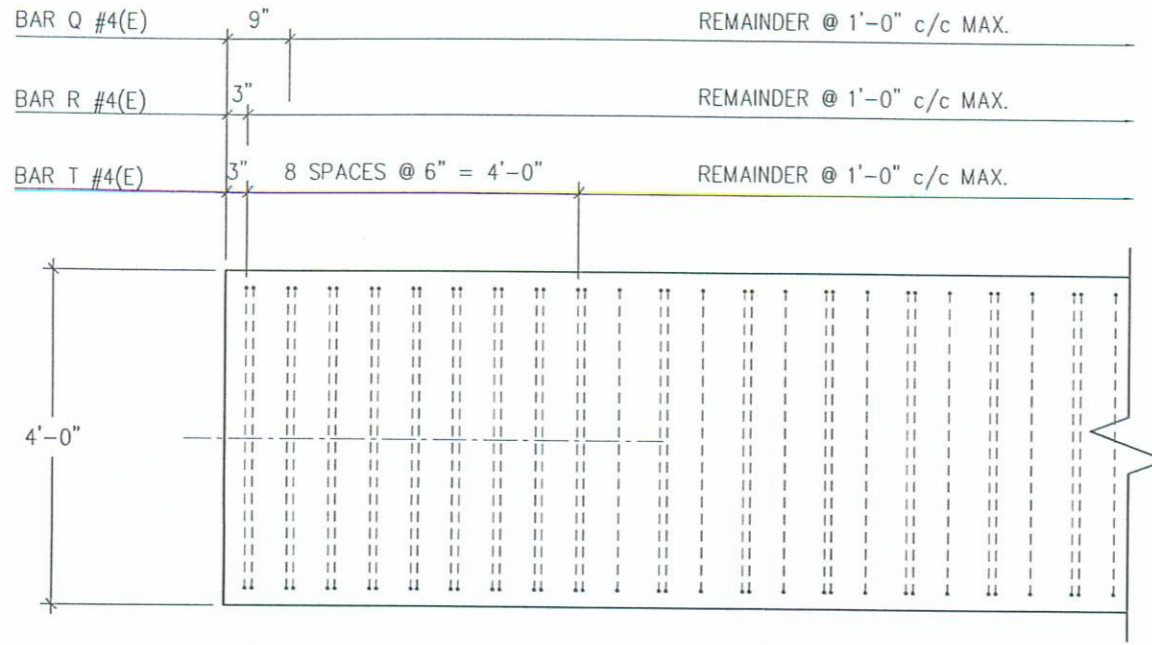
06-17-05



STEEL SECTION

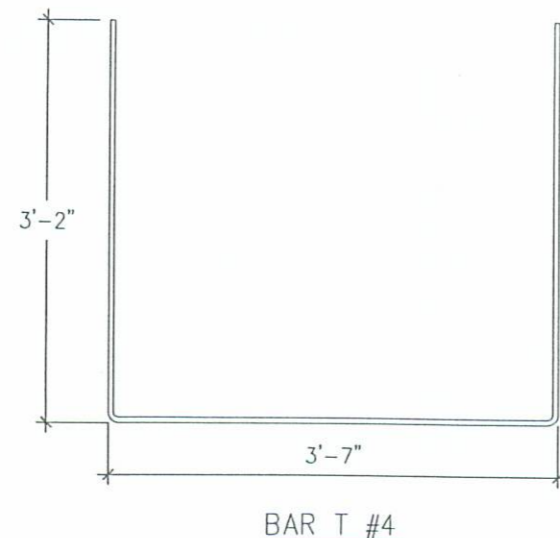


BENDING DIAGRAM

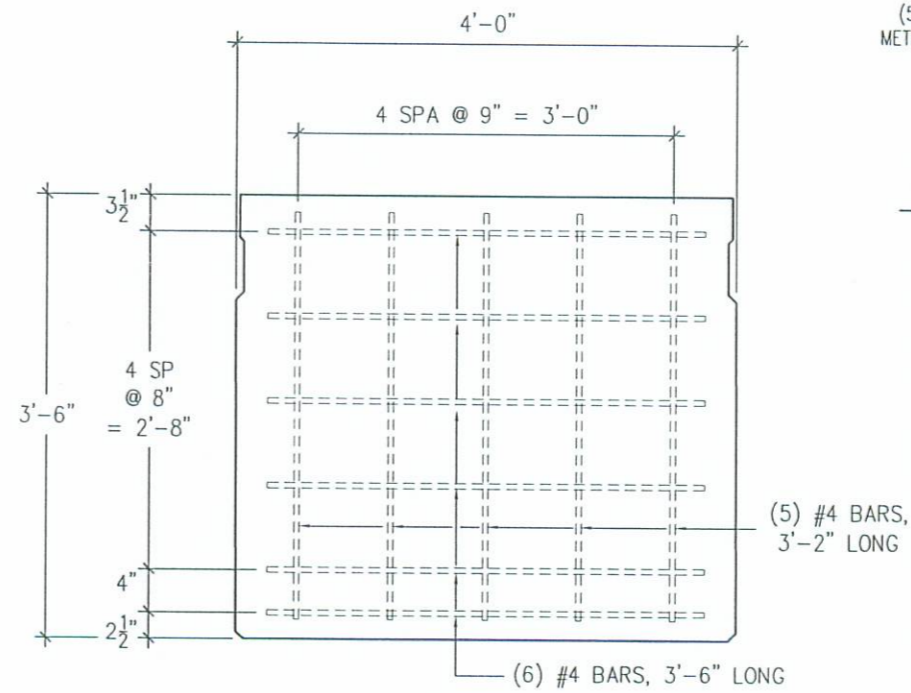


PARTIAL BEAM ELEVATION

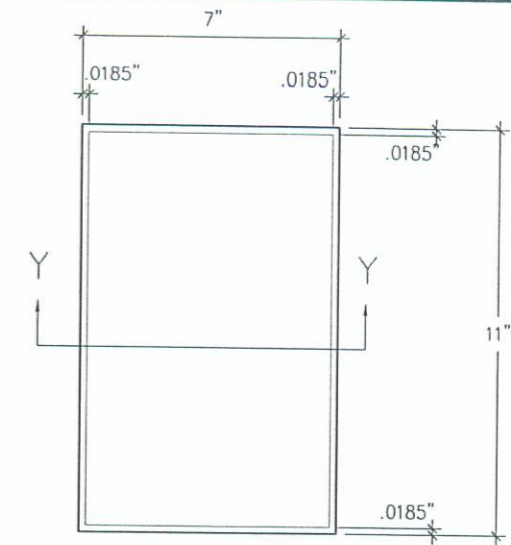
BAR MARK	BAR SIZE	NO. REQD. PER BM
BAR Q	#4(E)	96
BAR R	#4(E)	97
BAR T	#4(E)	105



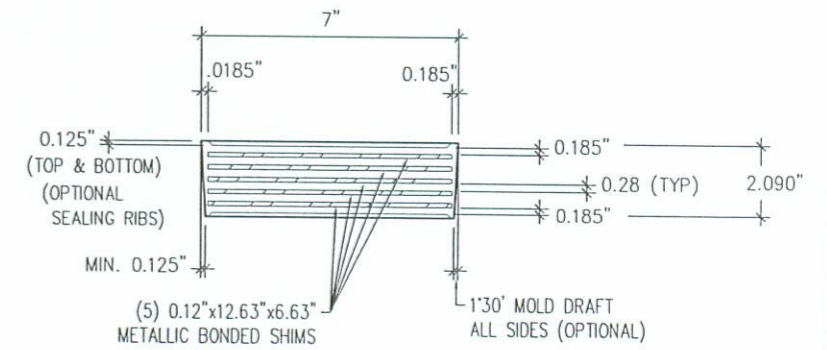
BAR T #4



END MAT DETAIL - B42x48



PLAN VIEW



SECTION Y-Y

BEARING PAD DETAILS

PRESTRESS SERVICES
INDUSTRIES, LLC

STEEL & DETAILS

LOGAN COUNTY, OHIO
BRIDGE NO. 85-0.26
TR 85 / WILLOW CREEK

CONTRACTOR: COUNTY FORCES

PRODUCING PLANT: 7855 N.W. Winchester Rd Decatur, IN 46733 PH: (260) 724-7117 FAX: (260) 724-3349	DRAFTING OFFICE: P.O. BOX 211 MELBOURNE, KY 41059 PH: (859) 441-0068 FAX: (859) 441-7986
---	--

REV. PREL.
6-17-05

DATE: 6-9-05	DRAWN BY: EDD	CHECKED: GDA
--------------	---------------	--------------

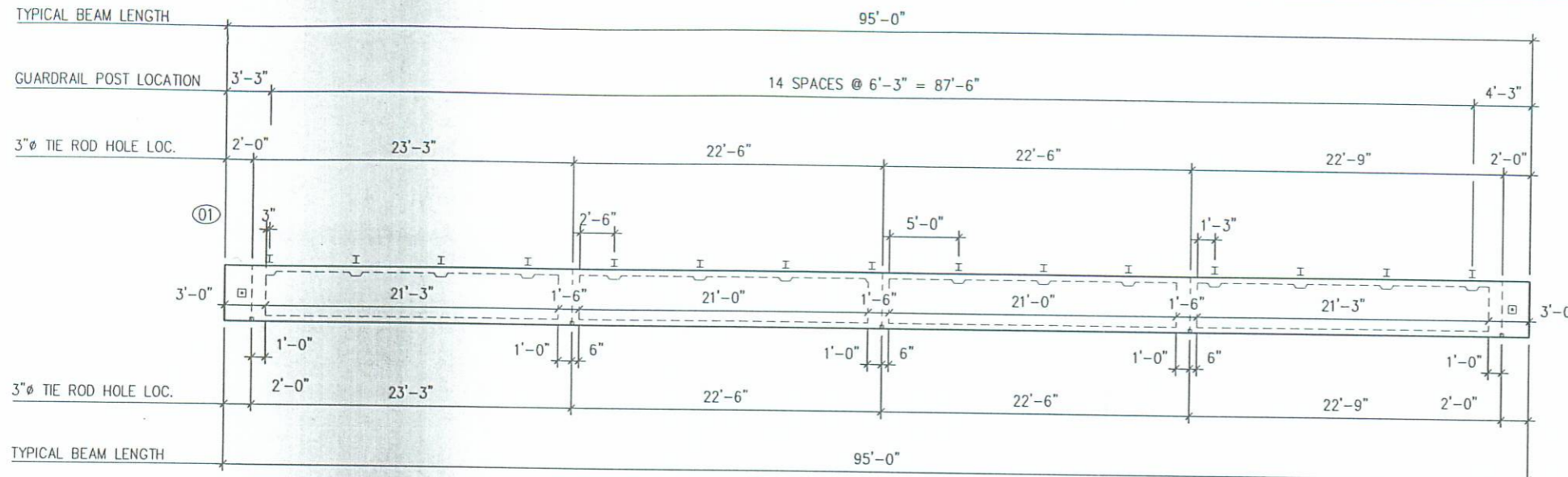
REVISIONS

CODE: B42x480	SHEET: 3 of 4	JOB NO: D5175
---------------	---------------	---------------

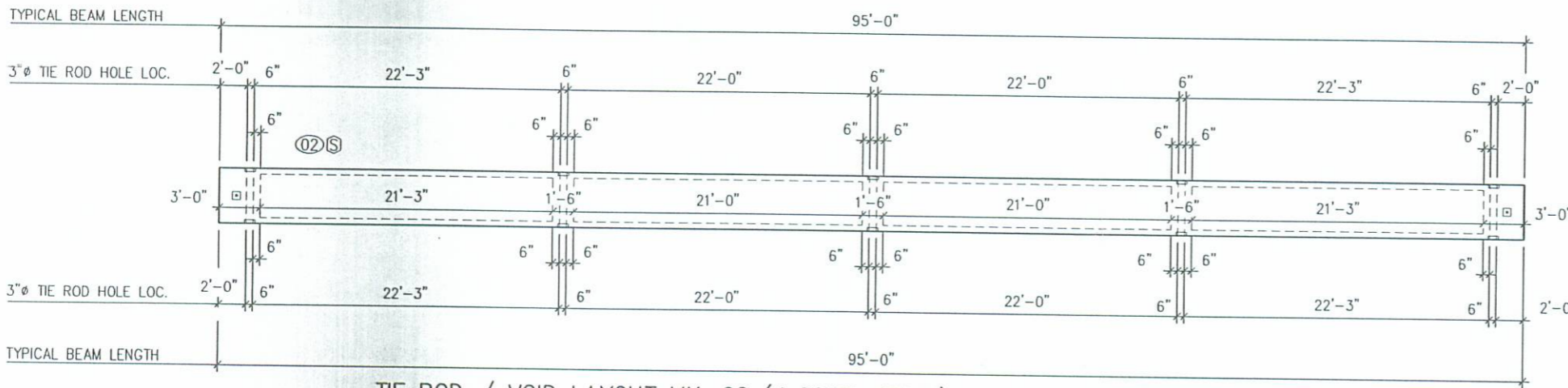
D5175_RevPrel.dwg-Layout1 (4)

11:32 AM

06-17-05

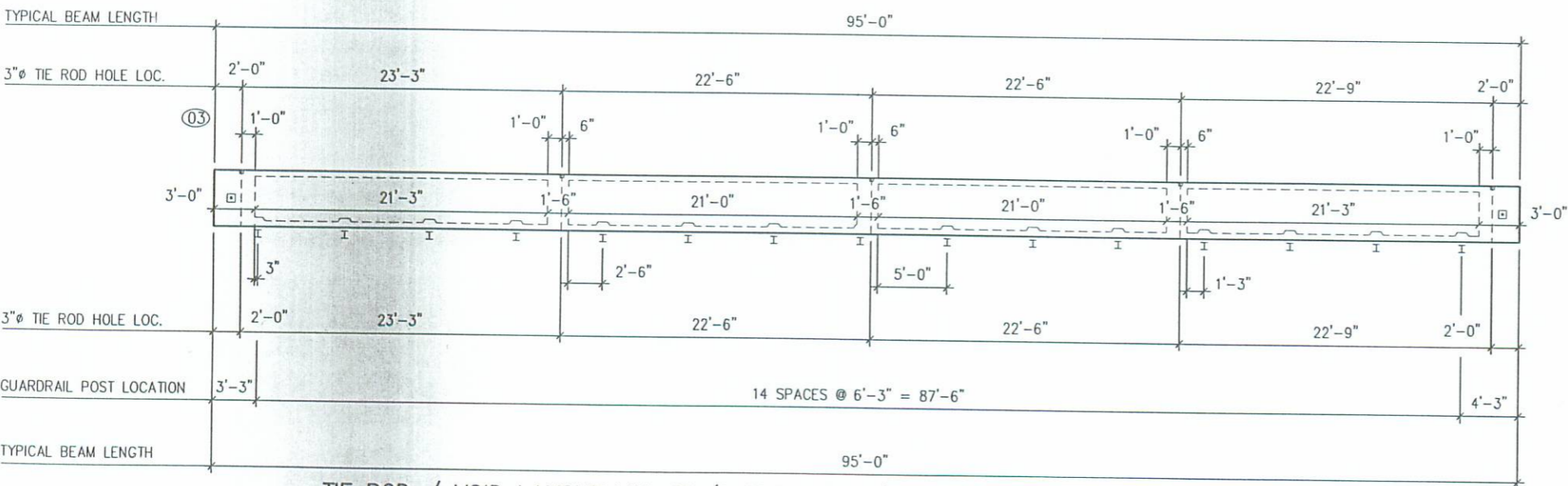


TIE ROD / VOID LAYOUT MK. 01 (1 REQD. THUS) SHIPPING WT. = 99,003 LBS.



TIE ROD / VOID LAYOUT MK. 02 (4 REQD. THUS) SHIPPING WT. = 97,173 LBS.

Ⓢ = BEAM IS SYMMETRICAL



TIE ROD / VOID LAYOUT MK. 03 (1 REQD. THUS) SHIPPING WT. = 99,003 LBS.

**** GUARDRAIL NOTE:**
 POSTS, RAIL, TUBULAR
 BACK-UP & (8) APPROACH
 POSTS BY PSI. SHIP POSTS
 INSTALLED REMAINDER
 SHIPPED LOOSE

PRESTRESS SERVICES INDUSTRIES, LLC		
BEAM LAYOUTS		
LOGAN COUNTY, OHIO BRIDGE NO. 85-0.26 TR 85 / WILLOW CREEK		
CONTRACTOR: COUNTY FORCES		
PRODUCING PLANT: 7855 N.W. Winchester Rd Decatur, IN 46733 PH: (260) 724-7117 FAX: (260) 724-3349	DRAFTING OFFICE: P.O. BOX 211 MELBOURNE, KY 41059 PH: (859) 441-0068 FAX: (859) 441-7986	
DATE: 6-9-05	DRAWN BY: EDD	CHECKED: GDA
REV. PREL. 6-17-05		
REVISIONS		
CODE: B42x480	SHEET: 4 of 4	JOB NO: D5175