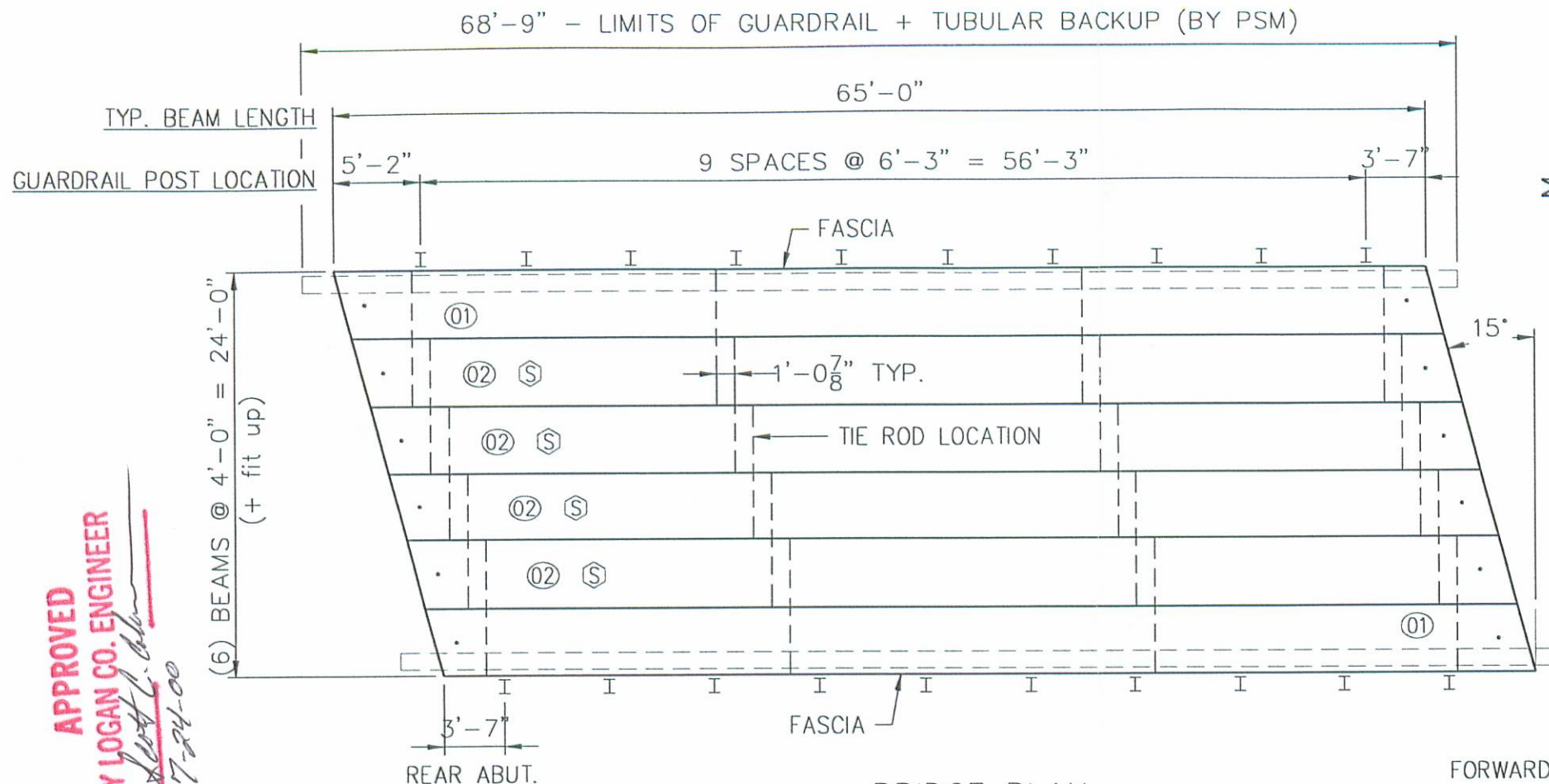
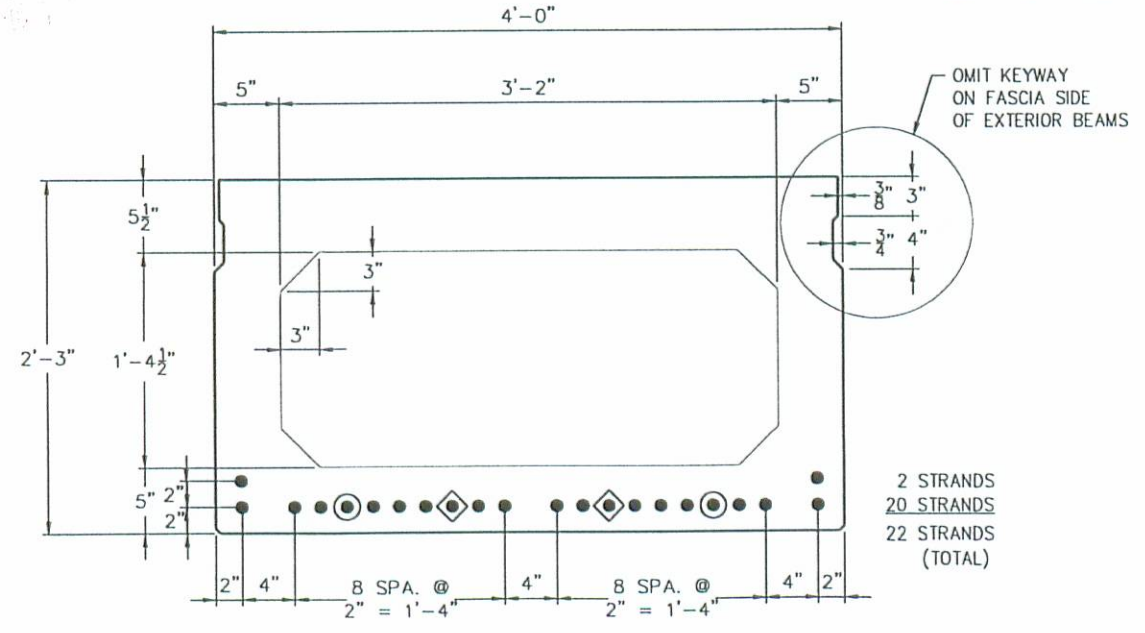


INNER-PLANT USE			
DATE	NO. OF COPIES	DWG. STATUS	

APPROVED
BY LOGAN CO. ENGINEER
[Signature]
 7-24-00



BRIDGE PLAN
 (S) = SYMMETRICAL BEAMS



STRAND SECTION
 (●) = DEBOND @ 2'-6", FROM EA. END OF EA. BEAM
 (◆) = DEBOND @ 1'-6", FROM EA. END OF EA. BEAM

GENERAL NOTES:

- 1) MANUFACTURE BEAMS IN ACCORDANCE WITH THE ODOT SPECIFICATIONS.
- 2) MINIMUM CONCRETE STRENGTH @ RELEASE OF STRAND = 4000 P.S.I.
MINIMUM CONCRETE STRENGTH @ 28 DAYS = 5,500 P.S.I.
- 3) STRAND SHALL BE (7) WIRE, UNCOATED, LOW RELAXATION, 1/2" DIA., 270 K.S.I. ULTIMATE STRENGTH.
- 4) PULL EACH STRAND TO 30,982 LBS.
- 5) STEEL GRADE 60, A.S.T.M. A-615.
- 6) BROOM FINISH TOPS OF BEAMS.
- 7) HS20-44 & THE ALTERNATE MILITARY LOADING.
- 8) ALL ANCHOR BOLTS, STUDS, INSERTS, TIE RODS, NUTS, & WASHERS SHALL BE GALVANIZED, PER ODOT SPECIFICATIONS.
- 9) KEYWAYS SHALL BE GIVEN A MEDIUM SANDBLAST AT THE PLANT WITHIN FOUR DAYS PRIOR TO SHIPPING.
- 10) CONCRETE MIX SHALL INCLUDE ODOT APPROVED CORROSION INHIBITOR: DOSAGE SHALL BE PER MANUFACTURER'S RECOMMENDATIONS.

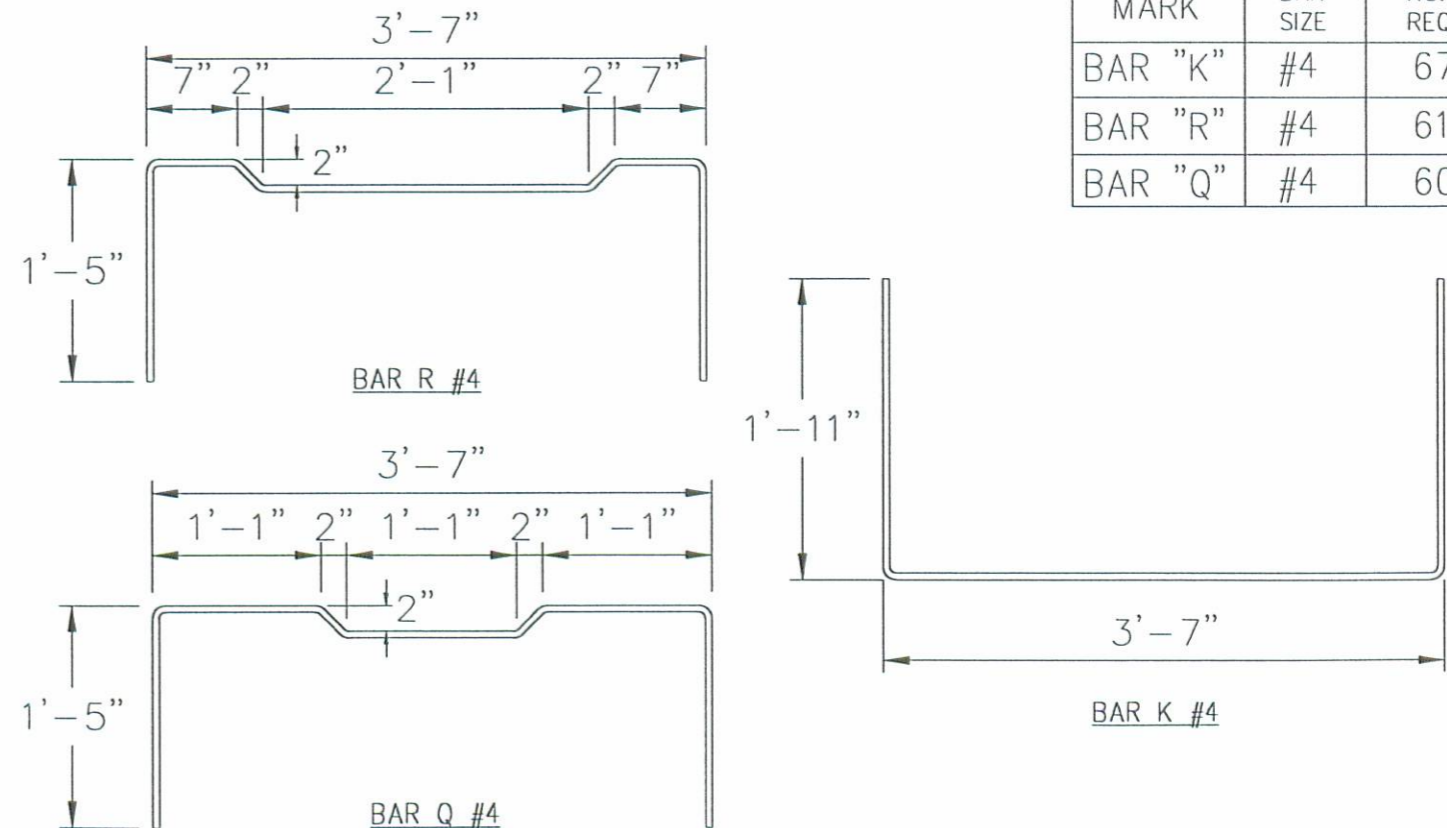
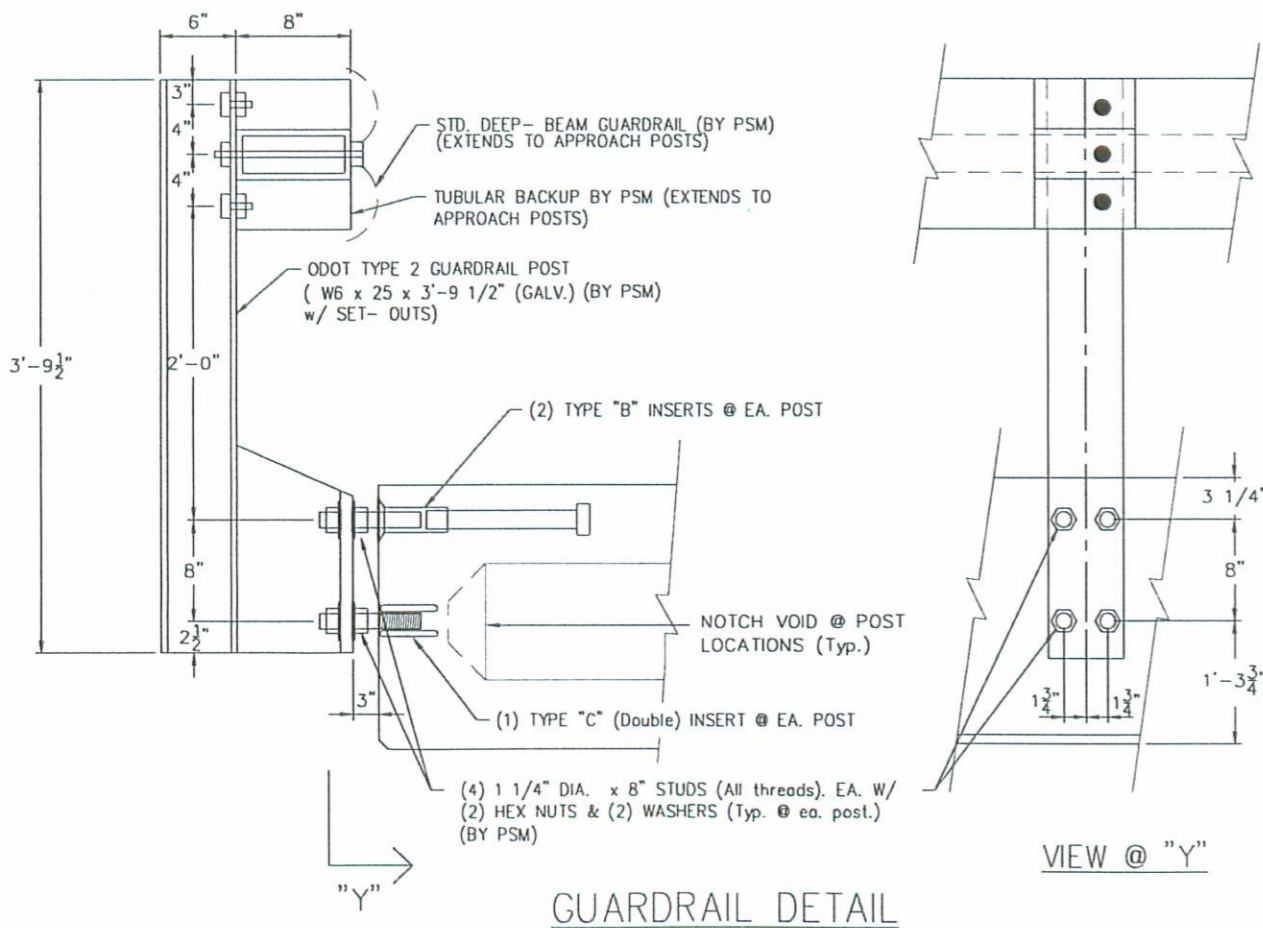
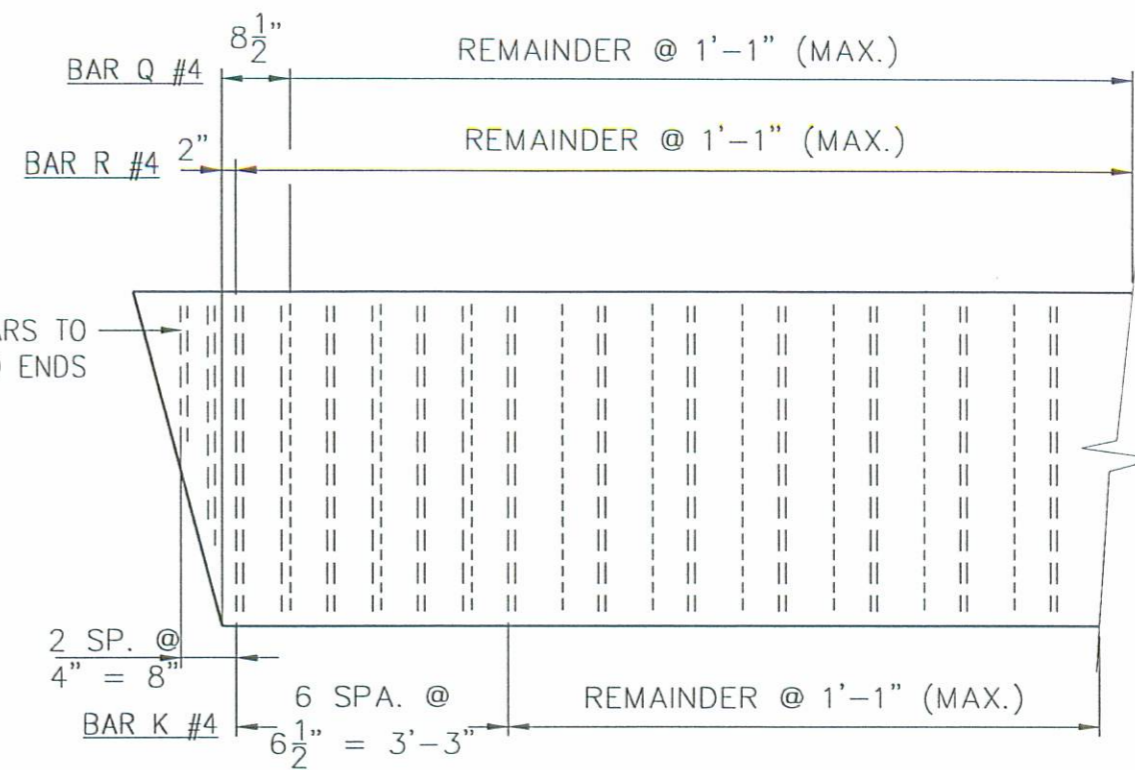
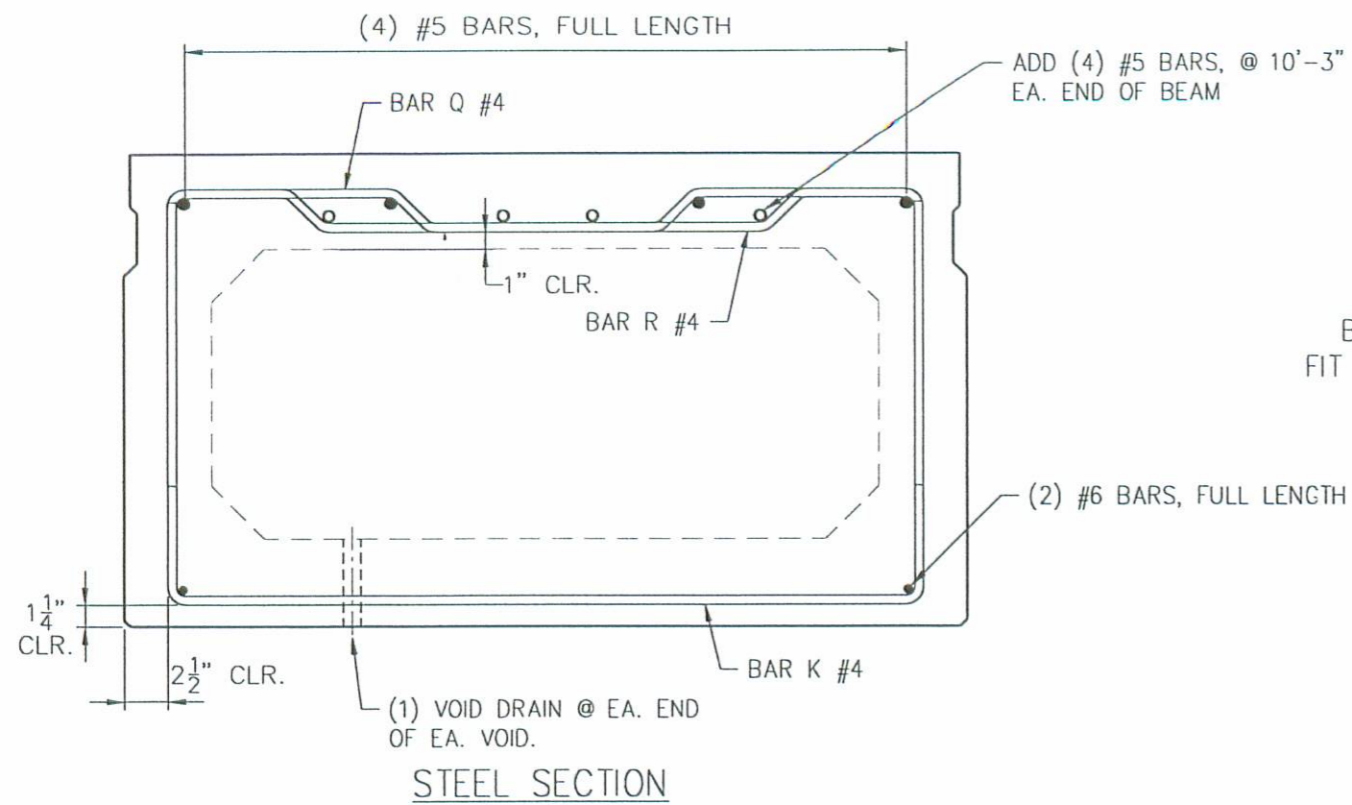
MARK NO.	NO. REQD.	WEIGHT
01	2	56,302 LBS.
02	4	55,735 LBS.

- NOTE:**
 P.S.M. SHALL FURNISH, INCIDENTAL TO BEAMS:
- (20) 1" x 8' TIE ROD
 - (40) 1/2" x 4" SQ. PLATE WASHERS
 - (40) 1" x 1" HEX NUTS
 - (12) 1" DIA. x 3'-3" DOWEL RODS (SMOOTH-GALV.)
 - (12) 1" x 6" SQ. P.E.J.F. DOWEL SEALS
 - (24) 1" x 6" x 1'-8" ELASTOMERIC BEARING PADS (70 DURO)
 - (24) 1/8" x 6" x 1'-8" SHIM PADS
 - (50 LF) 1" x 3" P.E.J.F. STRIP
 - (70') 7 STRANDS JUTE + INTERPLAST-N
 - (20) ODOT TYPE 2 POSTS INSTALLED, USING:
 - (80) 1 1/4" x 8" STUDS (ALL THREAD)
 - (160) 1 1/4" x 8" HEX NUTS
 - (160) WASHERS
 - (137'-6") STD. DEEP BEAM GUARDRAIL.
 - (137'-6") TUBULAR BACKUP



DATE	BY	REVISION		PRODUCING PLANT: ROUTE B P.O. BOX 211 MELBOURNE, KENTUCKY 41059 PH: (606) 441-0068 FAX: (606) 441-7986	AFFILIATES: 7855 NW WINCHESTER RD. P.O. BOX 711 DECATUR, INDIANA 46733-0111 PH: (219) 724-7117 FAX: (219) 724-3748	HALEY ROAD P.O. BOX 55436 LEXINGTON, KENTUCKY 40552-5436 PH: (502) 253-0461 FAX: (502) 259-0147	CONTRACTOR COUNTY FORCES DRAWN: WAH DATE: 7/14/00 CHECKED: _____ DATE: _____ APPROVED: _____ DATE: _____	PROJECT LOGAN COUNTY, OHIO BRIDGE No. 49 - 4.22 C.R. 49	SHOP NO. M0235 SHEET NO. 1 of 3

INNER-PLANT USE			
DATE	NO. of COPIES	DWG. STATUS	



STIRRUP QUANTITIES PER BEAM		
MARK	BAR SIZE	NO. REQD.
BAR "K"	#4	67
BAR "R"	#4	61
BAR "Q"	#4	60

DATE	BY	REVISION	PRODUCING PLANT:	AFFILIATES:	CONTRACTOR:	PROJECT:	SHOP NO.:	
			PRESTRESS SERVICES ROUTE B P.O. BOX 211 MELBOURNE, KENTUCKY 41059 PH: (606) 441-0068 FAX: (606) 441-7986	7855 NW WINCHESTER RD P.O. BOX 111 DECATUR, INDIANA 46733-0111 PH: (219) 724-1117 FAX: (219) 724-2543	HALF ROAD P.O. BOX 55436 LEWINGTON, KENTUCKY 40355-5436 PH: (606) 293-0461 FAX: (606) 293-0147	COUNTY FORCES DRAWN WAH 7/14/00 DATE CHECKED DATE APPROVED DATE	LOGAN COUNTY, OHIO BRIDGE No. 49 - 4.22 C.R. 49	M0235 SHEET NO. 3 of 3

C:\Drawings\Projects-BH\M0235\001\M0235SITE115.DWG I06 Jul 18 12:30:40 2000