

BRIDGE PLAN  
 (S) = BEAM IS SYMMETRICAL

**GENERAL NOTES:**

1. MANUFACTURE BEAMS IN ACCORDANCE WITH ODOT SPECIFICATIONS.
2. MINIMUM CONCRETE STRENGTH @ RELEASE OF STRAND = 4,000 P.S.I  
 MINIMUM CONCRETE STRENGTH @ 28 DAYS = 5,500 P.S.I
3. STRAND SHALL BE (7) WIRE, UNCOATED, LOW RELAXATION, 1/2" DIAMETER (A<sub>s</sub> = 0.153 IN<sup>2</sup>), GRADE 270
4. PULL EACH STRAND TO 30,982 LBS.
5. STEEL GRADE 60, A.S.T.M. A-615.
6. BROOM-FINISH TOPS OF BEAMS
7. HS20-44 & THE ALTERNATE MILITARY LOADING.
8. CONCRETE MIX SHALL INCLUDE ODOT APPROVED CORROSION INHIBITOR; DOSAGE SHALL BE PER MANUFACTURER'S RECOMMENDATIONS.
9. ALL ANCHOR BOLTS, STUDS, INSERTS, TIE RODS, NUTS, & WASHERS SHALL BE GALVANIZED, PER ODOT SPECIFICATIONS.
10. KEYWAYS SHALL RECEIVE A MEDIUM SANDBLAST AT PLANT WITHIN FOUR DAYS PRIOR TO SHIPPING.

**NOTE:**

P.S.M. SHALL FURNISH, INCIDENTAL TO BEAMS:

- (30) 1"Ø HEX NUTS
- (30) 1/2" X 4" SQ. PLATE WASHERS
- (15) 1"Ø TIE ROD 8'-0" LONG
- (12) 1"Ø X 2'-9" (GALV.) SMOOTH DOWEL RODS
- (12) 1" X 6" SQ. PEJF DOWEL SEALS
- (48') 7 STRAND JUTE + INTERPLAST-N GROUT ADDITIVE
- (56) 1 1/4"Ø X 8" STUDS (ALL THREADED)
- (112) 1 1/4"Ø HEX NUTS
- (112) WASHERS
- (14) ODOT TYPE 2 POSTS (INSTALLED ON BMS.)
- (8) W6x25 APPROACH POSTS (SHIP LOOSE)
- (100') STD-DEEP BEAM GUARDRAIL (SHIP LOOSE)
- (100') TUBULAR BACK-UP (SHIP LOOSE)
- (24) 1"x6"x1'-3" ELASTOMERIC BEARING PADS (70 DURO)
- (24) 1/8"x6"x1'-3" SHIMS
- (56') 1"x3" PEJF

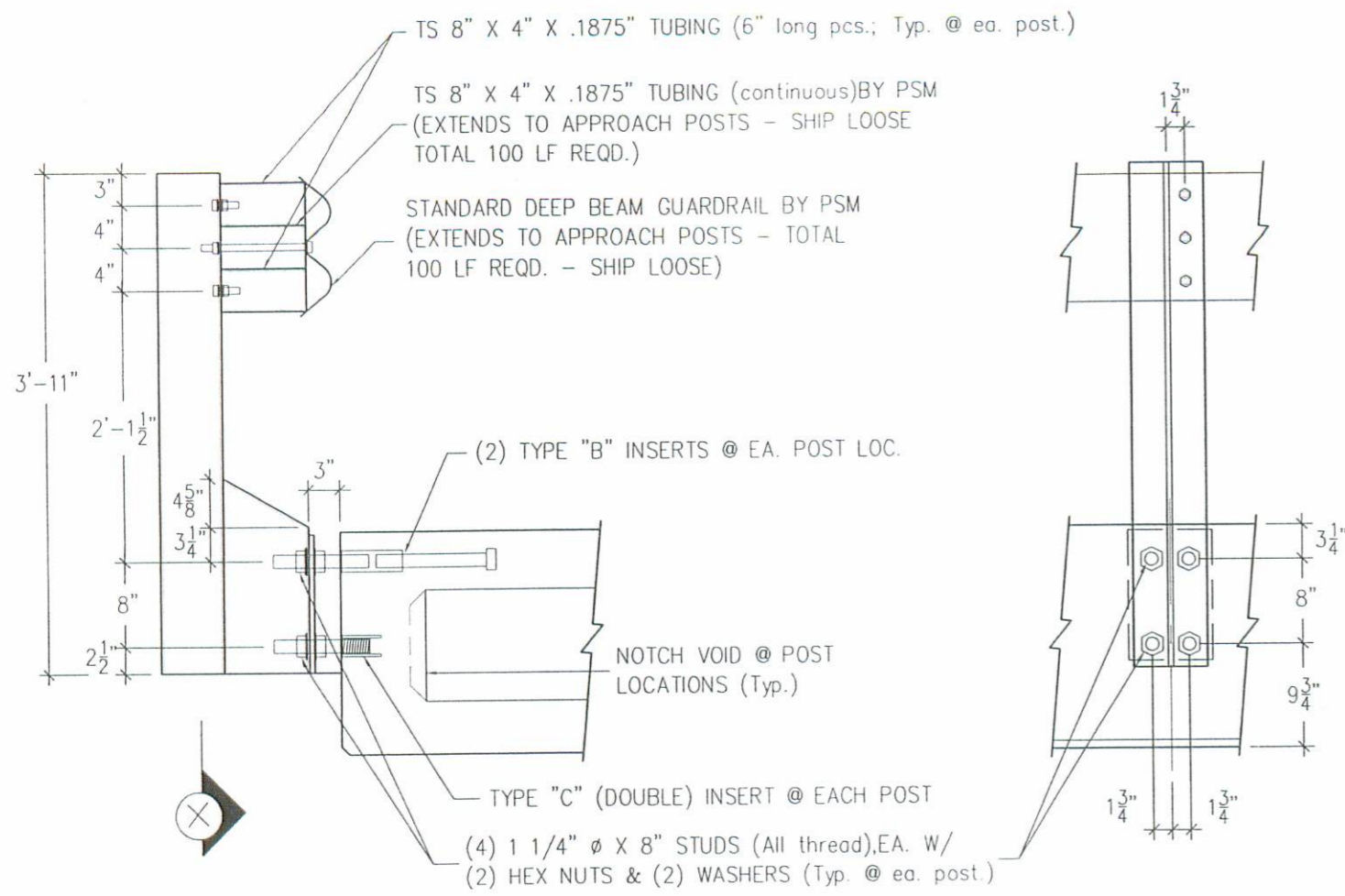
MARK NO.	NO. REQD.	WEIGHT
01	2	36,005 LBS.
02	4	37,277 LBS.

**APPROVED**  
 BY LOGAN CO. ENGINEER

*Scott C. Blum* 2-20-02

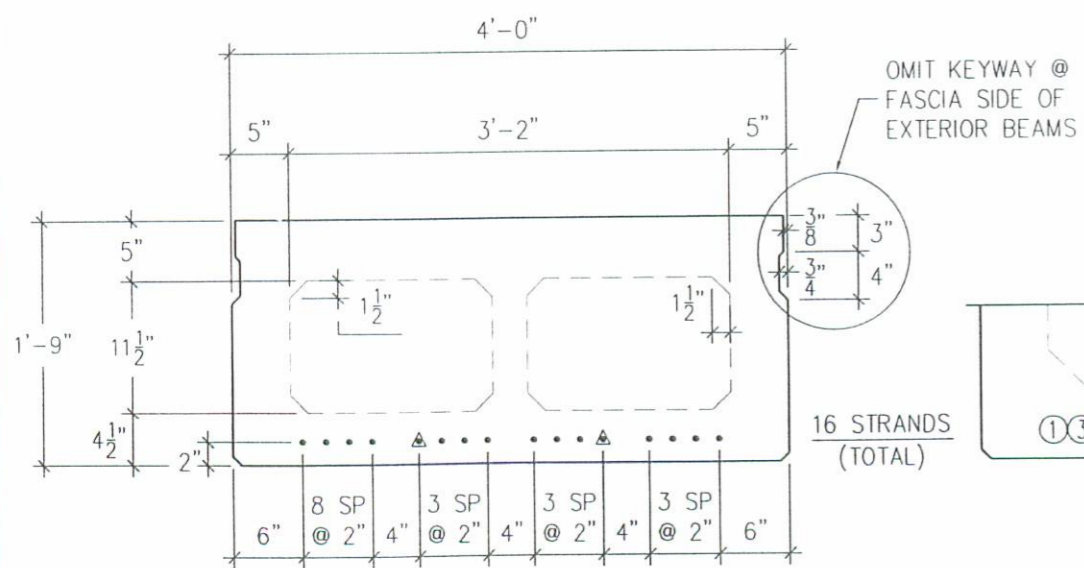
**PROJECT OVERVIEW**

LOGAN COUNTY, OHIO BR. NO. T.R. 29-8.56		
CONTRACTOR: COUNTY FORCES		
	PRODUCING PLANT: STATE ROUTE 8 MELBOURNE, KY 41059 PH: (859) 441-0068 FAX: (859) 441-7986	DRAFTING OFFICE: P.O. BOX 211 MELBOURNE, KY 41059 PH: (859) 441-0068 FAX: (859) 441-7986
	DATE: 2-08-02	DRAWN BY: EDD
REVISIONS		
CODE:	SHEET: 1 of 4	JOB NO: M2110



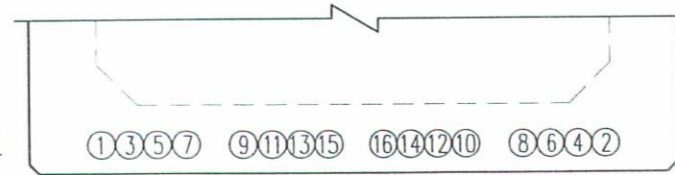
GUARDRAIL DETAIL

VIEW @ "X"

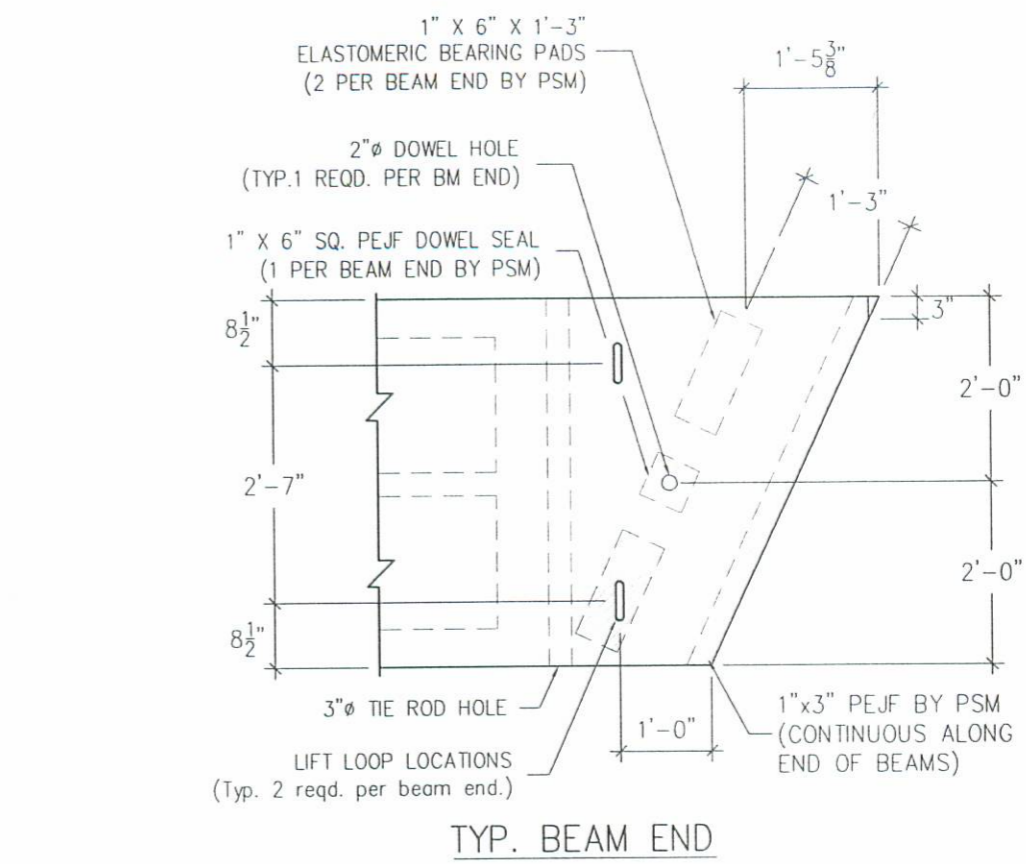


STRAND SECTION

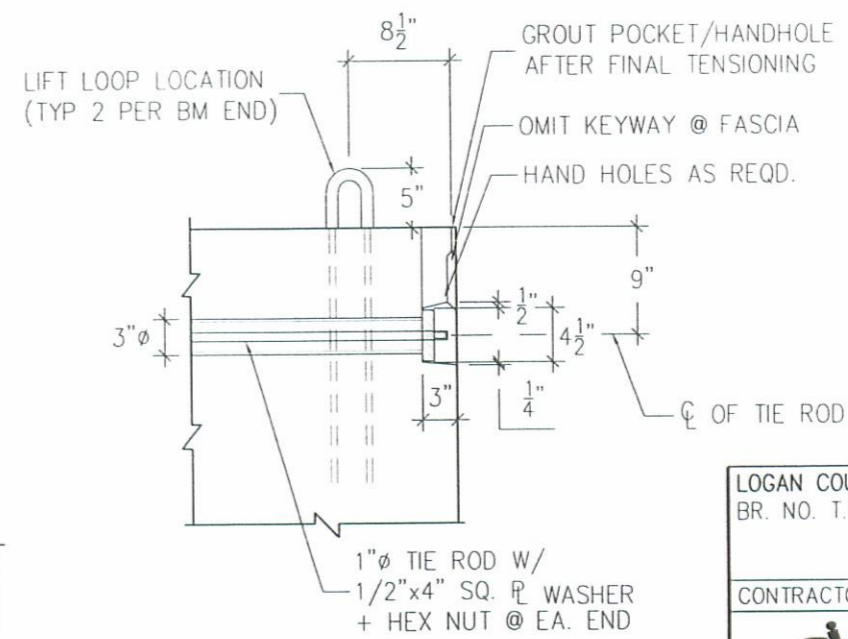
▲ = DEBOND 1'-6" @ EA END OF BEAM



DETENSIONING PROCEDURE



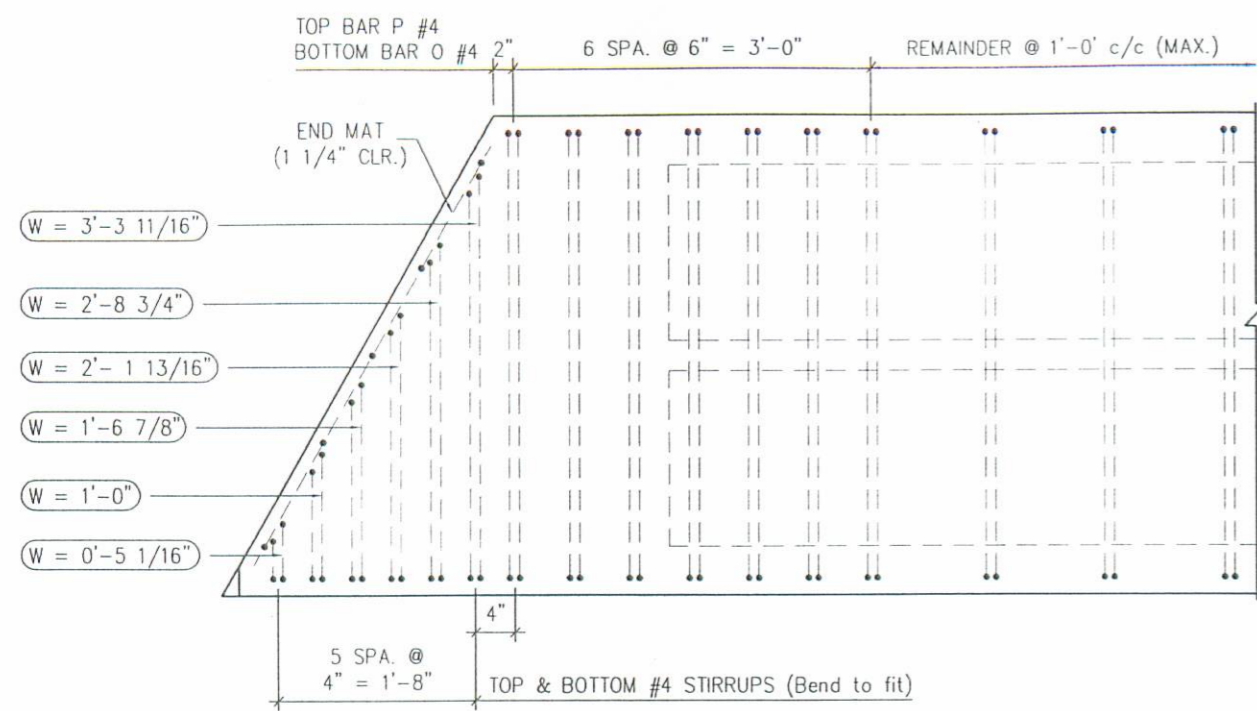
TYP. BEAM END



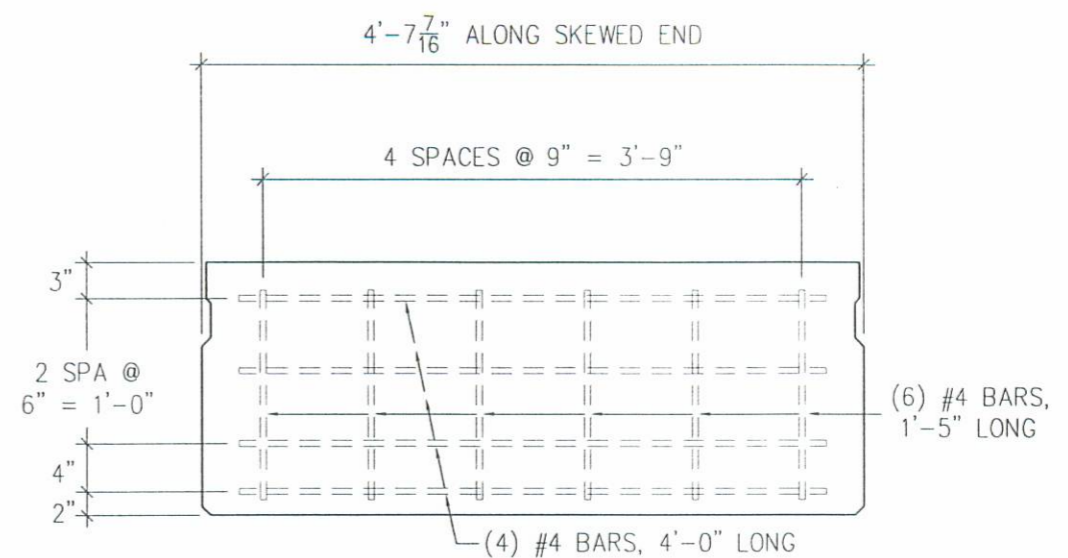
TIE ROD DETAIL

STRAND & DETAILS

LOGAN COUNTY, OHIO BR. NO. T.R. 29-8.56		
CONTRACTOR: COUNTY FORCES		
	PRODUCING PLANT: STATE ROUTE 8 MELBOURNE, KY 41059 PH: (859) 441-0068 FAX: (859) 441-7986	DRAFTING OFFICE: P.O. BOX 211 MELBOURNE, KY 41059 PH: (859) 441-0068 FAX: (859) 441-7986
	DATE: 2-08-02	DRAWN BY: EDD
REVISIONS		
CODE:	SHEET: 2 of 4	JOB NO: M2110



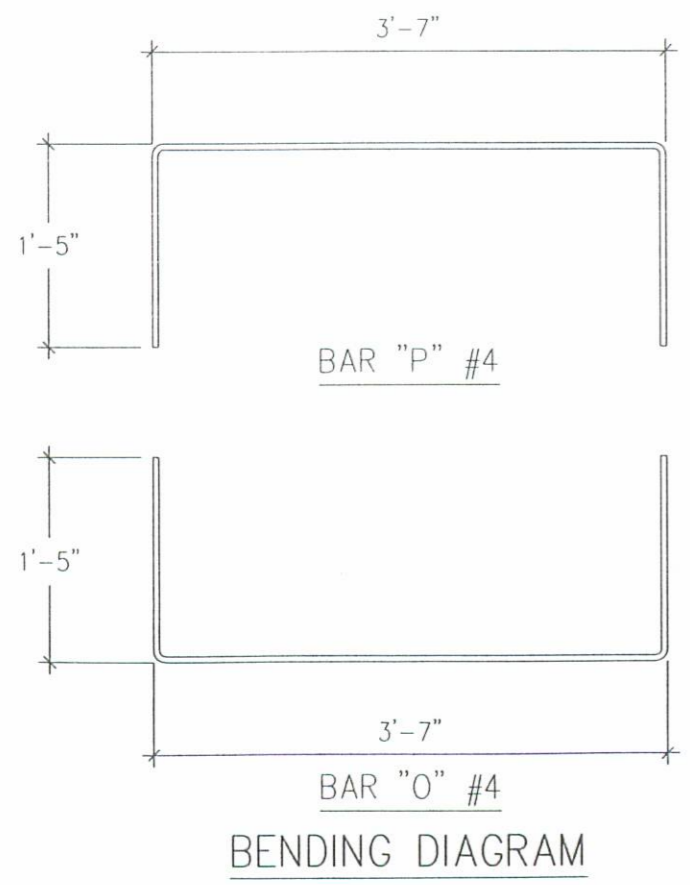
PARTIAL BEAM PLAN - B21x48  
(Showing stirrup spacing)



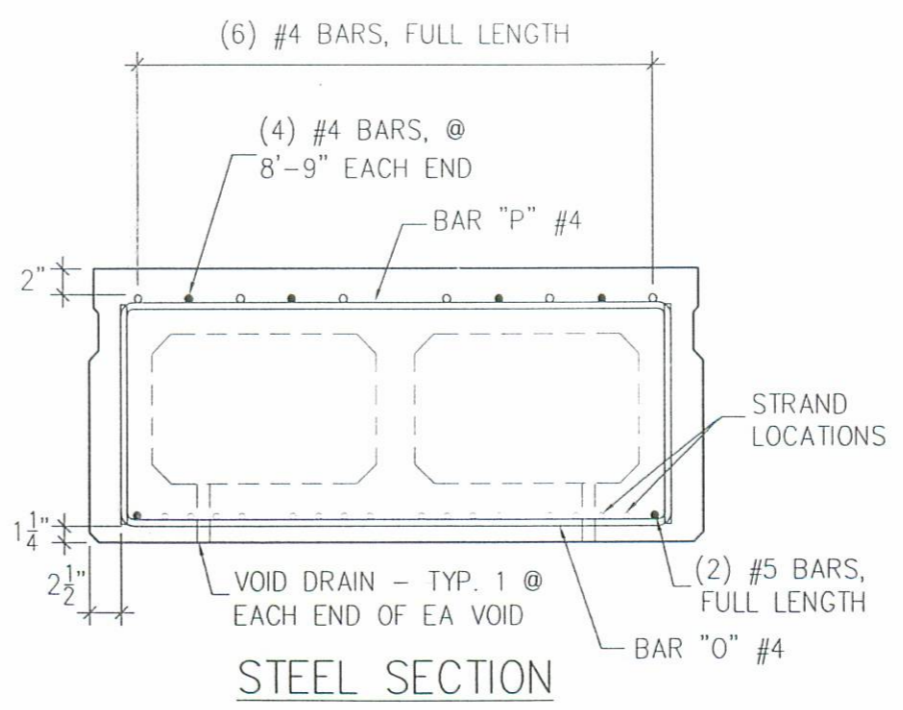
END MAT - B21x48

STIRRUP QUANTITIES PER BEAM*		
MARK	BAR SIZE	NO. REQD.
BAR P	# 4	53
BAR O	# 4	53

\* DOES NOT INCLUDE CUSTOM SIZE STIRRUPS IN SKEWED ENDS.



BENDING DIAGRAM



STEEL SECTION

STEEL DETAILS

LOGAN COUNTY, OHIO  
BR. NO. T.R. 29-8.56

CONTRACTOR: COUNTY FORCES

**PSi** Progress Services

PRODUCING PLANT: STATE ROUTE 8, MELBOURNE, KY 41059  
PH: (859) 441-0068  
FAX: (859) 441-7986

DRAFTING OFFICE: P.O. BOX 211, MELBOURNE, KY 41059  
PH: (859) 441-0068  
FAX: (859) 441-7986

DATE: 2-08-02  
DRAWN BY: EDD  
CHECKED: GDA

REVISIONS: 


CODE: SHEET: 3 of 4 JOB NO: M2110

