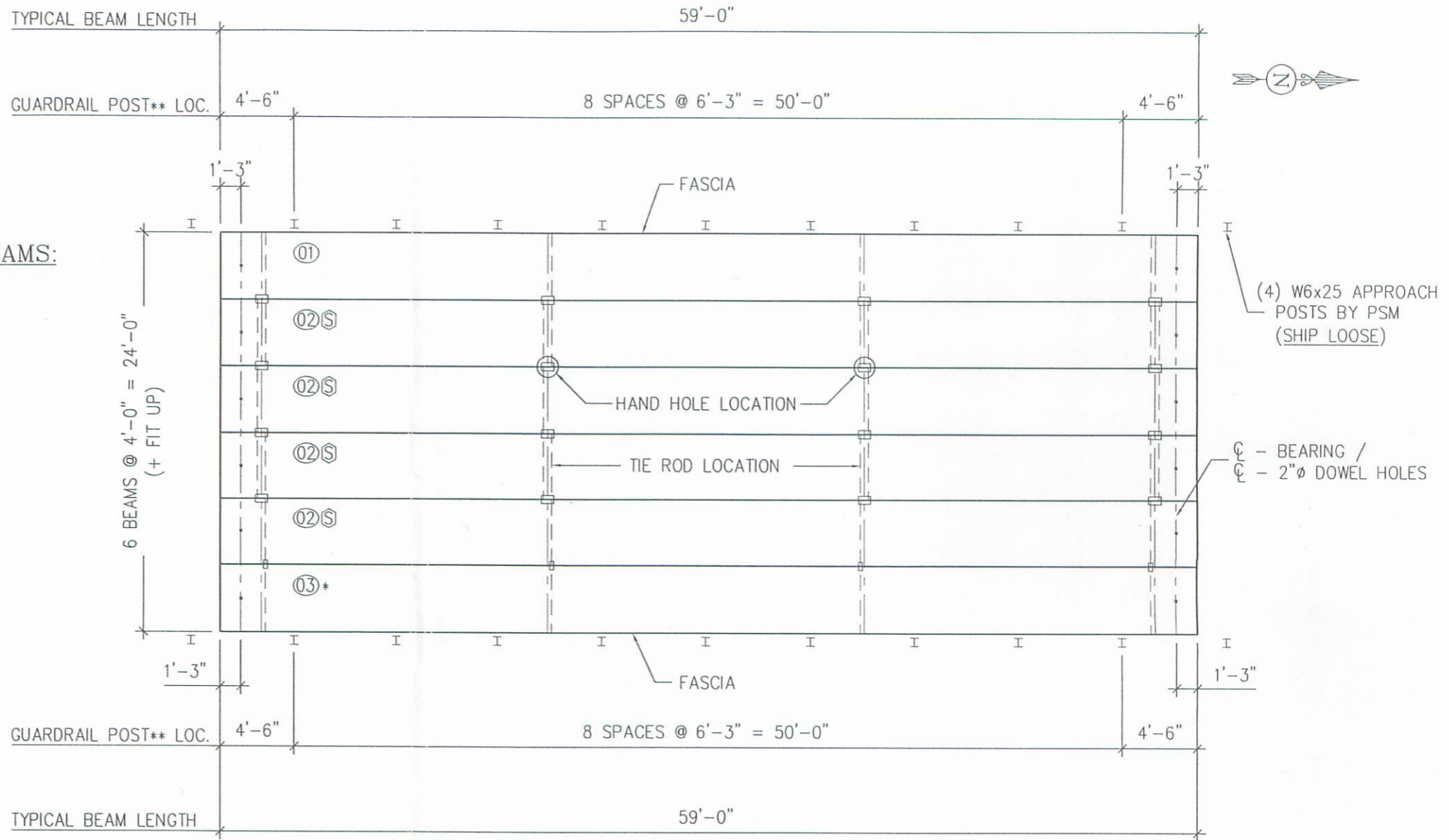


**** GUARDRAIL NOTE:**
 POSTS, RAIL, & TUBULAR BACK-UP BY PSM:
 SHIP POSTS INSTALLED ON BEAMS.
 SHIP RAIL & TUBULAR BACK-UP LOOSE.

NOTE:
P.S.M. SHALL FURNISH, INCIDENTAL TO BEAMS:
 (24) 1"Ø HEX NUTS
 (24) 1/2" X 4" SQ. PLATE WASHERS
 (8) 1"Ø TIE ROD 12'-0" LONG
 (4) 1"Ø TIE ROD 8'-0" LONG
 (12) 1"Ø X 3'-3" (GALV.) SMOOTH DOWEL RODS
 (12) 1" X 6" SQ. PEJF DOWEL SEALS
 (59') 7 STRAND JUTE + INTERPLAST-N GROUT ADDITIVE
 (18) W6 X 25 ODOT TYPE 2 (GALV.) GUARDRAIL POSTS -
 SHIP INSTALLED ON BEAMS USING:
 (72) 1 1/4"Ø X 8" STUDS (ALL THREADED)
 (144) 1 1/4"Ø HEX NUTS
 (144) WASHERS
 (125 LF) STANDARD GUARDRAIL (GALV.) SHIP LOOSE
 (125 LF) TUBULAR BACK-UP (GALV.) SHIP LOOSE
 (4) W6X25 APPROACH POSTS 6'-9" LONG (GALV.)
 (24) 1" X 1'-1" X 1'-5" ELASTOMERIC BEARING PADS ("PLAIN")
 (24) 1/8" X 1'-1" X 1'-5" ELASTOMERIC SHIM PADS



GENERAL NOTES:

1. MANUFACTURE BEAMS IN ACCORDANCE WITH ODOT SPECIFICATIONS.
2. MINIMUM CONCRETE STRENGTH @ RELEASE OF STRAND = 4,000 P.S.I
 MINIMUM CONCRETE STRENGTH @ 28 DAYS = 5,500 P.S.I
3. STRAND SHALL BE (7) WIRE, UNCOATED, LOW RELAXATION, 1/2" "REGULAR" DIAMETER (A s= 0.153 IN2), GRADE 270
4. PULL EACH STRAND TO 30,982 LBS.
5. STEEL GRADE 60, A.S.T.M. A-615.
6. BROOM-FINISH TOPS OF BEAMS
7. HS20-44 & THE ALTERNATE MILITARY LOADING.
8. CONCRETE MIX SHALL INCLUDE ODOT APPROVED CORROSION INHIBITOR; DOSAGE SHALL BE PER MANUFACTURER'S RECOMMENDATIONS.
9. ALL ANCHOR BOLTS, STUDS, INSERTS, TIE RODS, NUTS, & WASHERS SHALL BE GALVANIZED, PER ODOT SPECIFICATIONS.
10. KEYWAYS SHALL RECEIVE A MEDIUM SANDBLAST AT PLANT WITHIN FOUR DAYS PRIOR TO SHIPPING.
12. BEAM ENDS SHALL BE SEALED WITH BITUMINOUS MATERIAL @ CUT STRAND LOCATIONS

* IDENTICAL TO MK. 01 BY 180° ROTATION
 REAR ABUT.

BRIDGE PLAN
 ⊗ = BEAM IS SYMMETRICAL

FORWARD ABUT.

APPROVED
 BY LOGAN CO. ENGINEER
 1-17-03

MARK NO.	NO. REQD.	WEIGHT
01	1	48,620 LBS.
02	4	48,667 LBS.
03*	1	48,620 LBS.

*IDENTICAL TO MK.01 BY 180° ROTATION

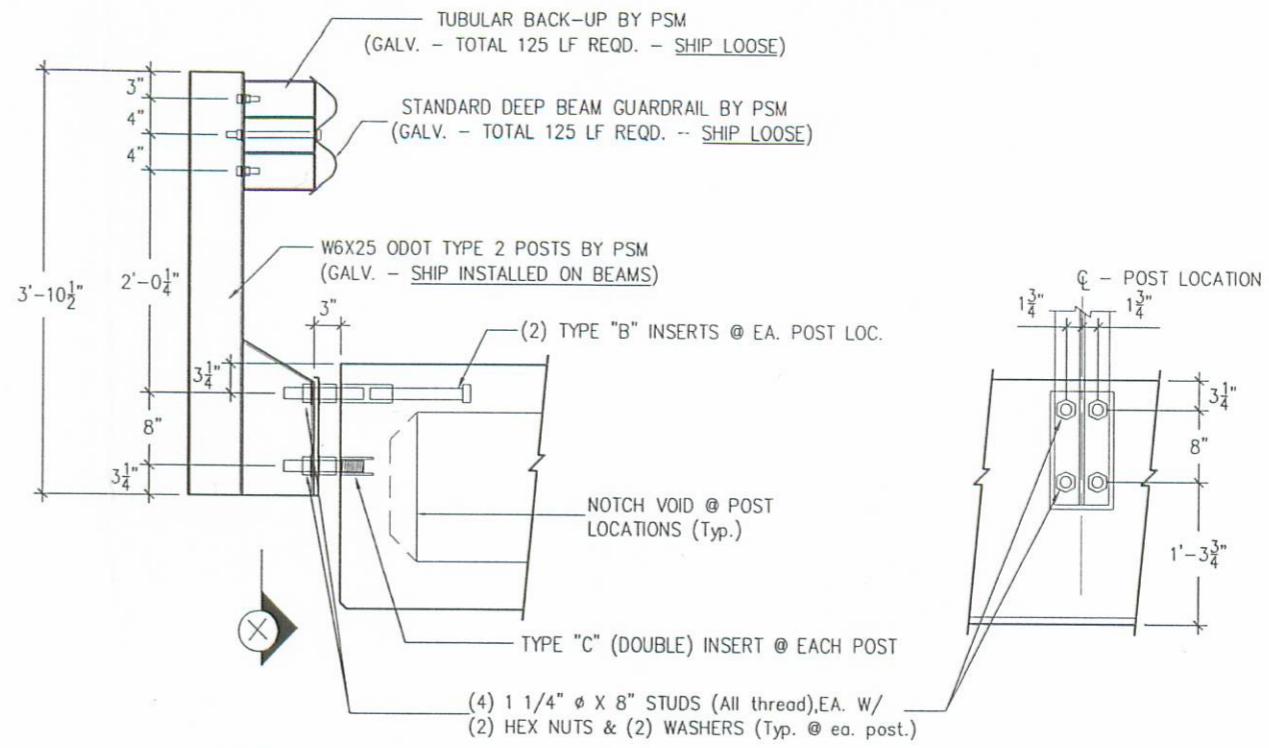
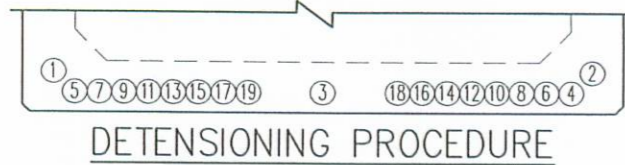
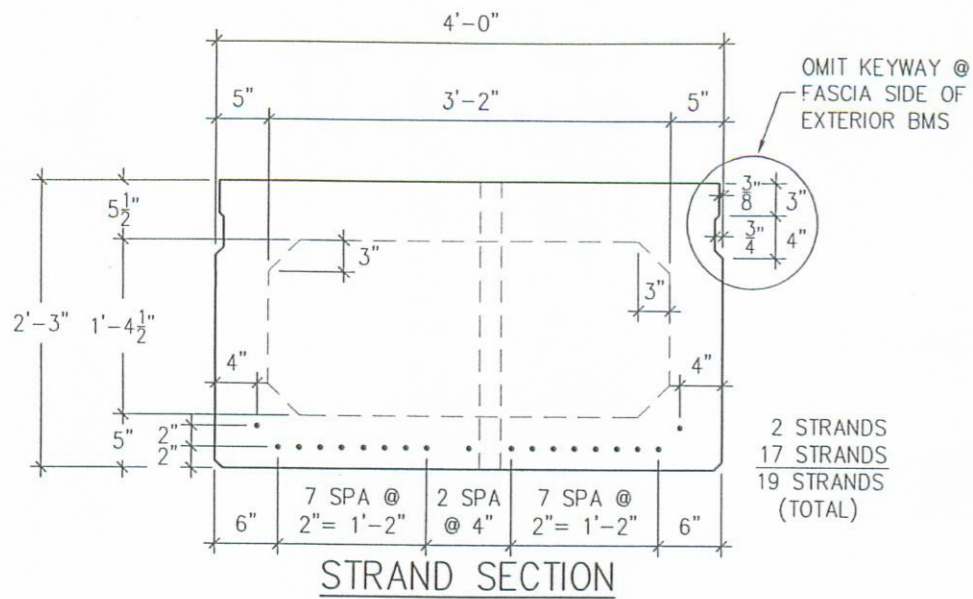
PROJECT OVERVIEW		
LOGAN COUNTY, OHIO BRIDGE NO. CR 21-4.63 / RUM CREEK		
CONTRACTOR: COUNTY FORCES		
PSi Progress Services	PRODUCING PLANT: State Route 8 MELBOURNE, KY 41059 PH: (859) 441-0068 FAX: (859) 441-7986	DRAFTING OFFICE: P.O. BOX 211 MELBOURNE, KY 41059 PH: (859) 441-0068 FAX: (859) 441-7986
	DATE: 1-2-03	DRAWN BY: EDD CHECKED: GDA
REVISIONS		
CODE: B27480	SHEET: 1 of 4	JOB NO: M2307

gadams

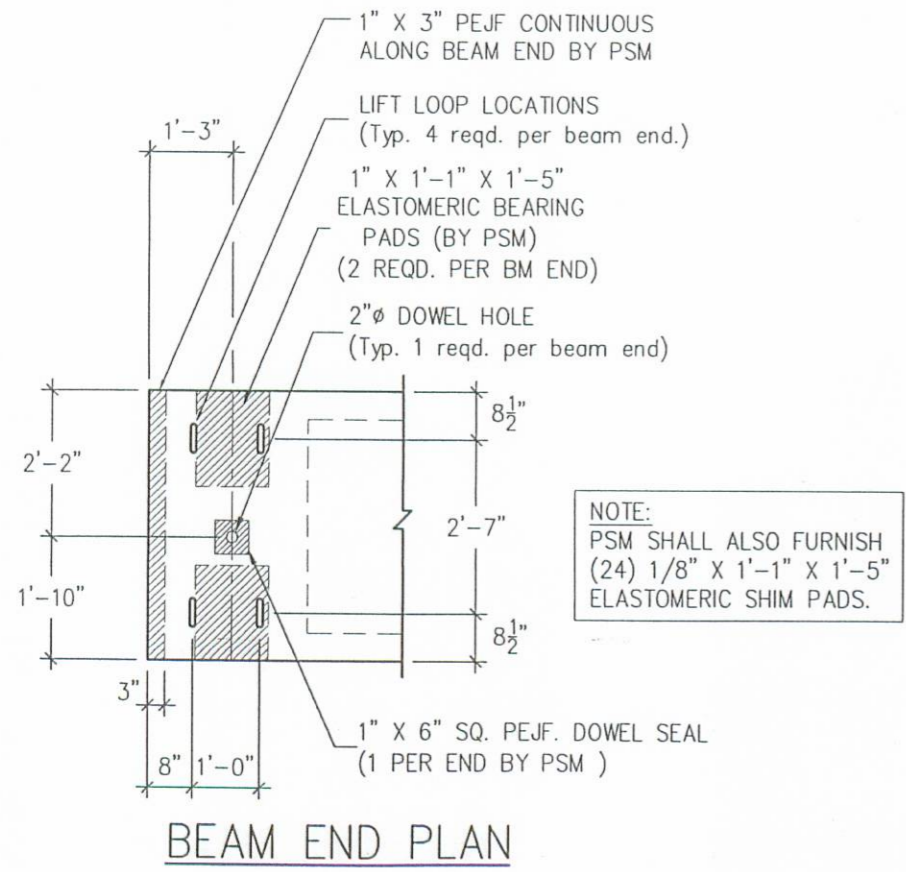
M2307LcOH.dwg-PROJECT OVERVIEW

5:11 PM

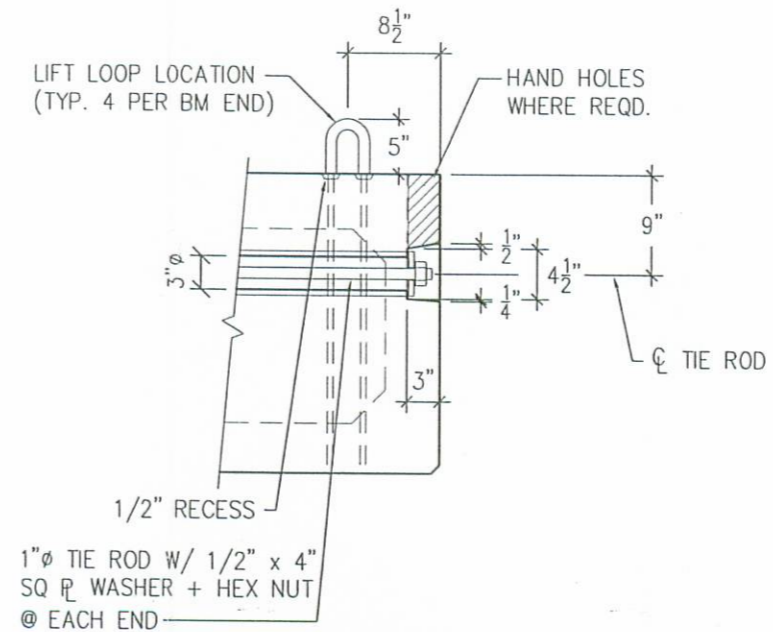
01-16-03



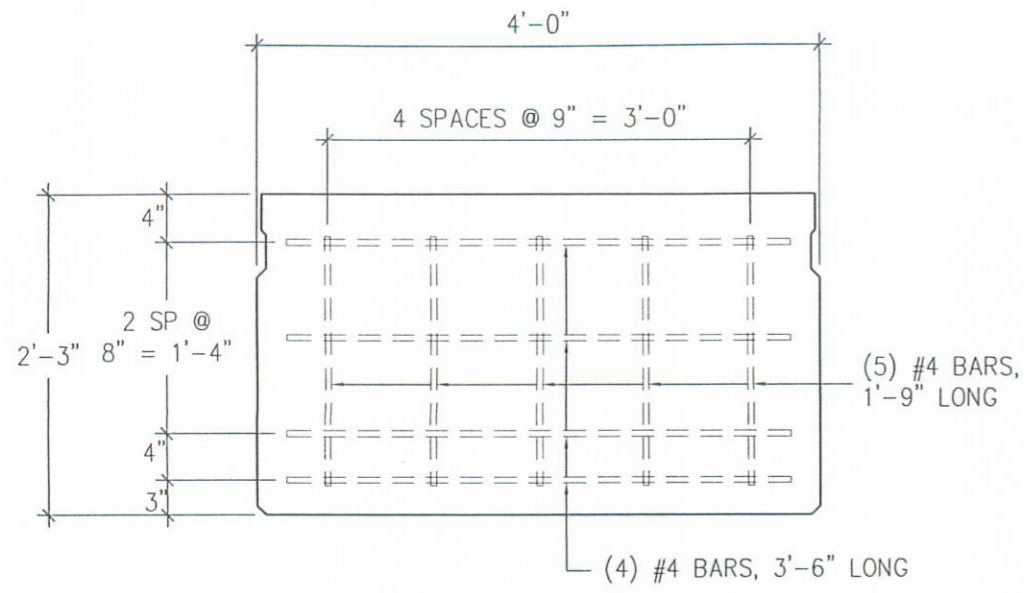
GUARDRAIL POST DETAIL **VIEW @ "X"**
ALL GUARDRAIL COMPONENTS PER ODOT STD. DWG. DBR-2-73



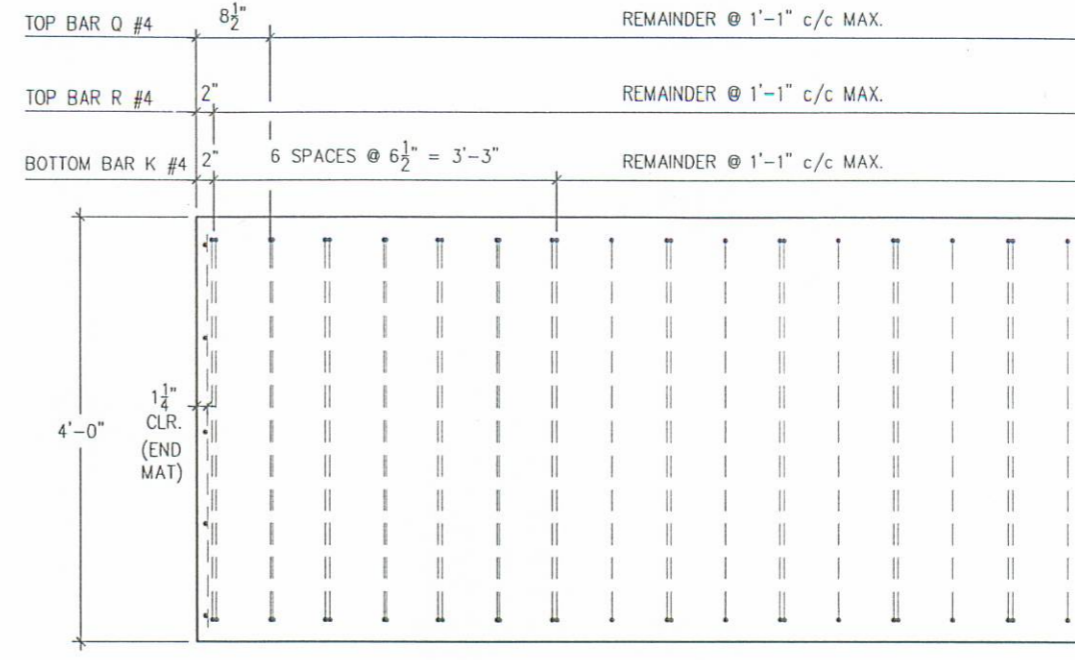
NOTE:
PSM SHALL ALSO FURNISH (24) 1/8" X 1'-1" X 1'-5" ELASTOMERIC SHIM PADS.



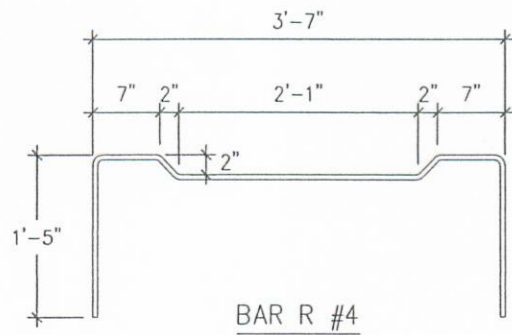
STRAND & DETAILS		
LOGAN COUNTY, OHIO BRIDGE NO. CR 21-4.63 \ RUM CREEK		
CONTRACTOR: COUNTY FORCES		
	PRODUCING PLANT: State Route 8 MELBOURNE, KY 41059 PH: (859) 441-0068 FAX: (859) 441-7986	DRAFTING OFFICE: P.O. BOX 211 MELBOURNE, KY 41059 PH: (859) 441-0068 FAX: (859) 441-7986
	DATE: 1-2-03	DRAWN BY: EDD
REVISIONS		
CODE: B27480	SHEET: 2 of 4	JOB NO: M2307



END MAT DETAIL
ALL #4 BARS

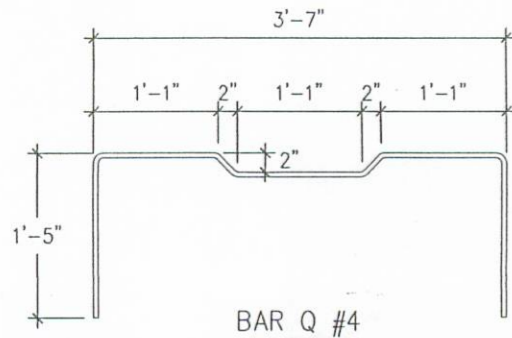


PARTIAL BEAM PLAN-(OH B27-48)
(Showing stirrup spacing)

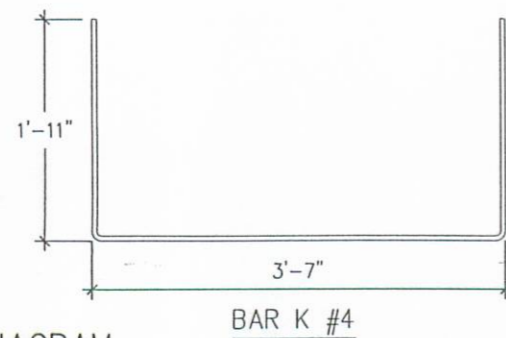


BAR R #4

BAR MARK	BAR SIZE	NO. REQD. PER BEAM
BAR Q	#4	54
BAR R	#4	55
BAR K	#4	61

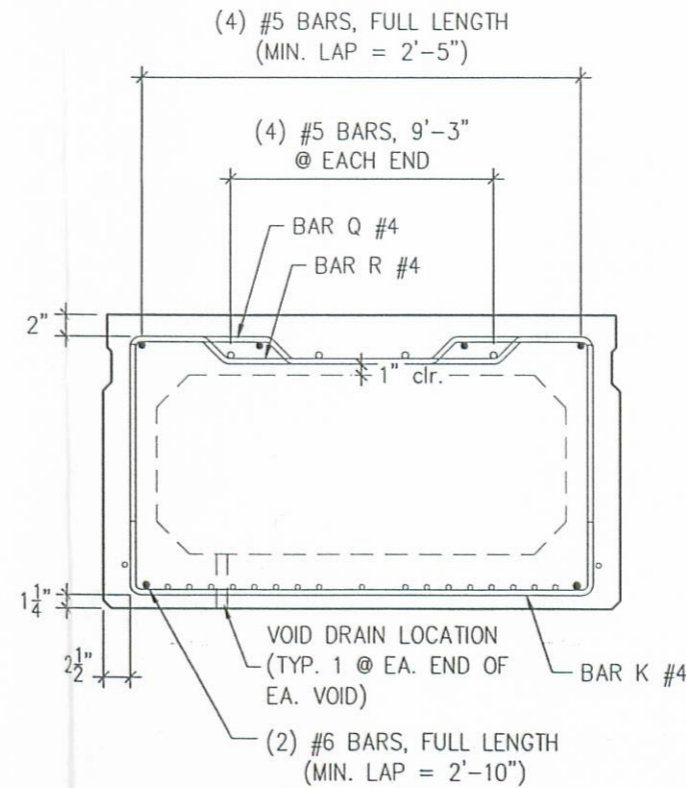


BAR Q #4



BAR K #4

BENDING DIAGRAM



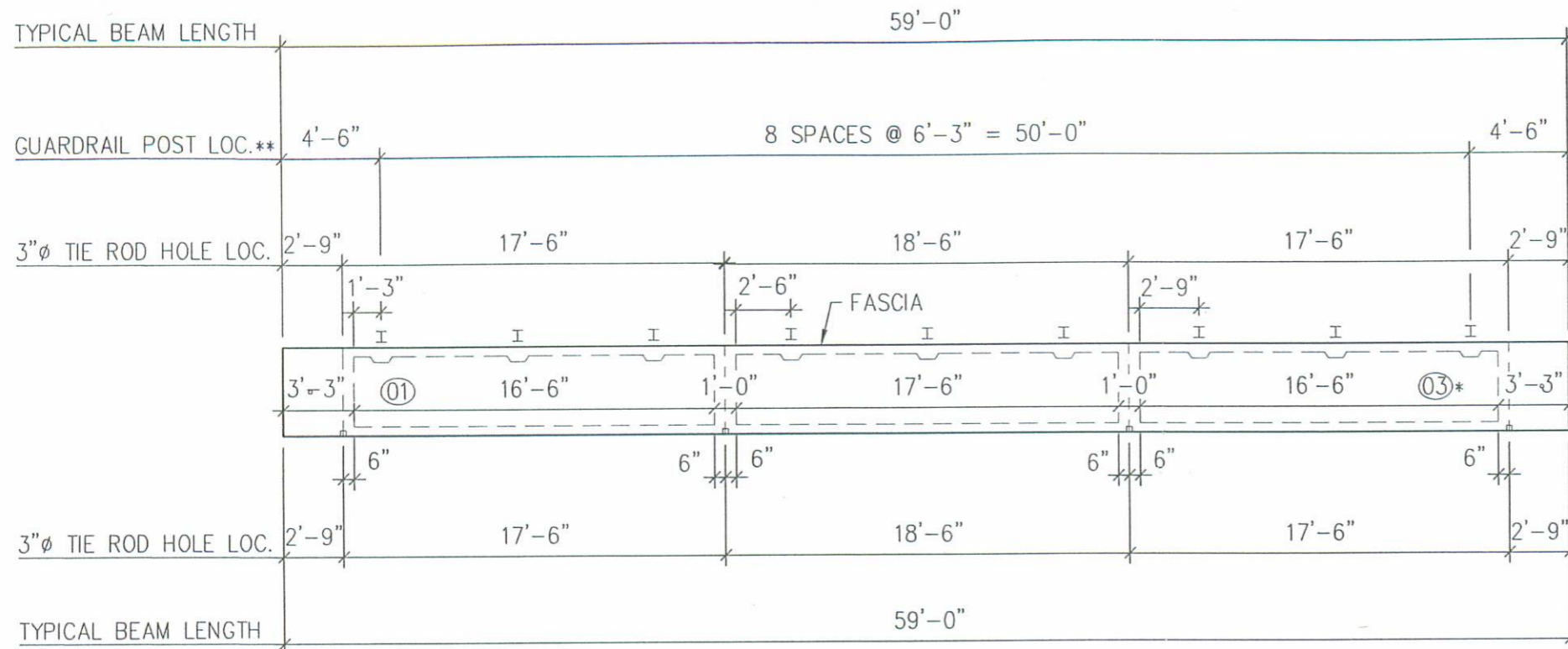
STEEL SECTION

STEEL DETAILS		
LOGAN COUNTY, OHIO BRIDGE NO. CR 21-4.63 / RUM CREEK		
CONTRACTOR: COUNTY FORCES		
PSi Progress Services	PRODUCING PLANT: State Route 8 MELBOURNE, KY 41059 PH: (859) 441-0068 FAX: (859) 441-7986	DRAFTING OFFICE: P.O. BOX 211 MELBOURNE, KY 41059 PH: (859) 441-0068 FAX: (859) 441-7986
	DATE: 1-2-03	DRAWN BY: EDD
REVISIONS		
CODE: B27480	SHEET: 3 of 4	JOB NO: M2307

M2307LcOH.dwg-BEAM LAYOUTS

5:11 PM

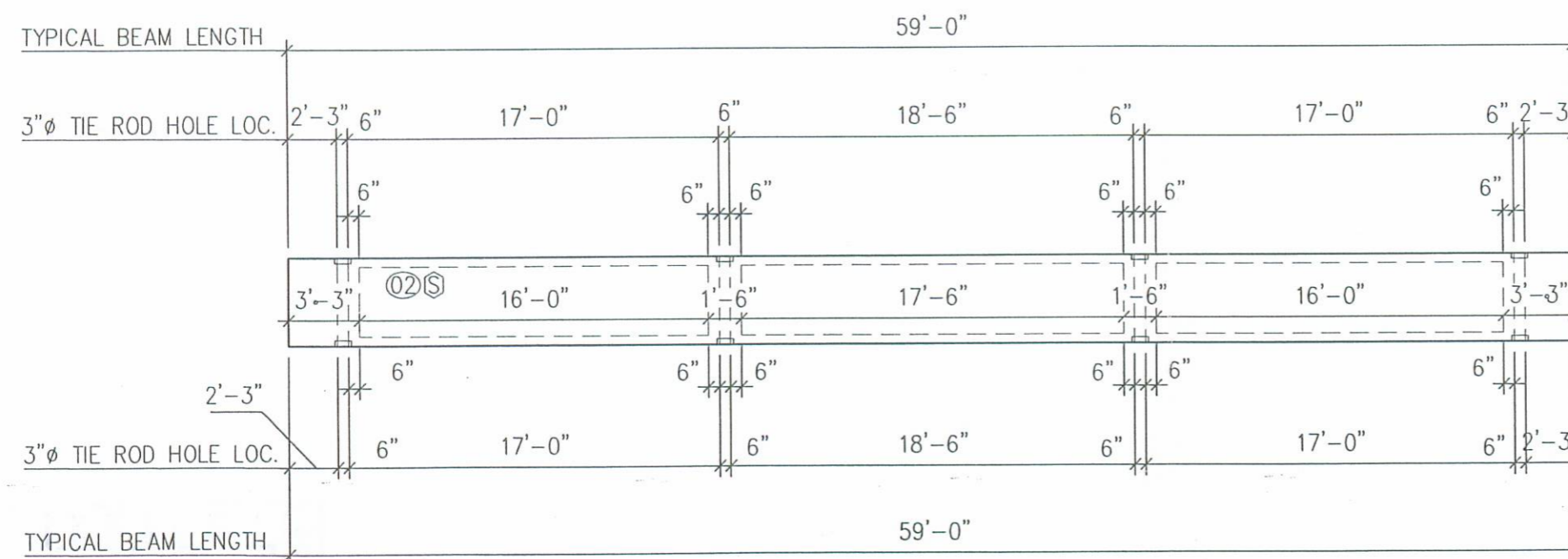
01-16-03



TIE ROD / VOID LAYOUTS MKS. 01 & 03* (1 REQD. EA. THUS) SHIPPING WT. = 48,620 LBS.

** GUARDRAIL NOTE:
 POSTS, RAIL, & TUBULAR BACK-UP
 BY PSM. SHIP RAIL & TUBULAR
 BACK-UP LOOSE.

* IDENTICAL TO MK. 01 BY 180° ROTATION



TIE ROD / VOID LAYOUT MK. 02 (4 REQD. THUS) SHIPPING WT. = 48,667 LBS.

Ⓢ = BEAM IS SYMMETRICAL

BEAM LAYOUTS			
LOGAN COUNTY, OHIO BRIDGE NO. CR 21-4.63 / RUM CREEK			
CONTRACTOR: COUNTY FORCES			
PSi Prestress Services	PRODUCING PLANT: State Route 8 MELBOURNE, KY 41059 PH: (859) 441-0068 FAX: (859) 441-7986	DRAFTING OFFICE: P.O. BOX 211 MELBOURNE, KY 41059 PH: (859) 441-0068 FAX: (859) 441-7986	
	DATE: 1-2-03	DRAWN BY: EDD	CHECKED: GDA
REVISIONS			
CODE: B27480	SHEET: 4 of 4	JOB NO: M2307	