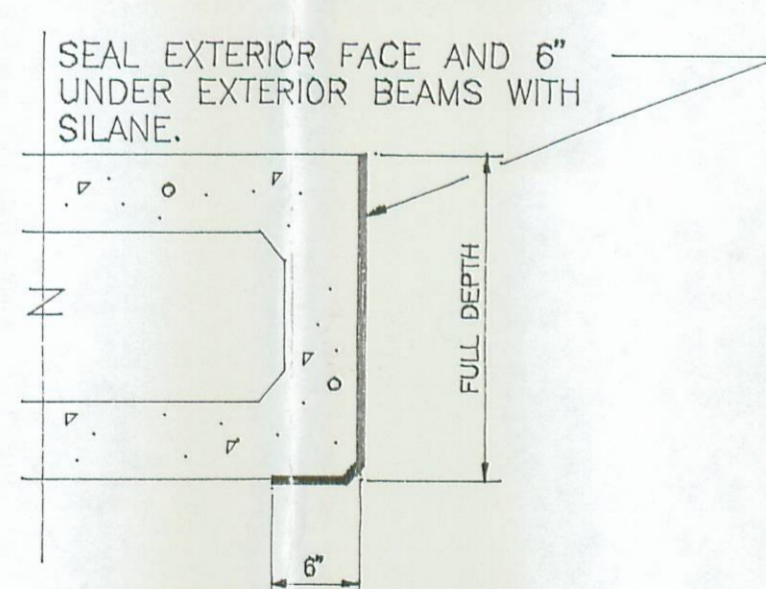
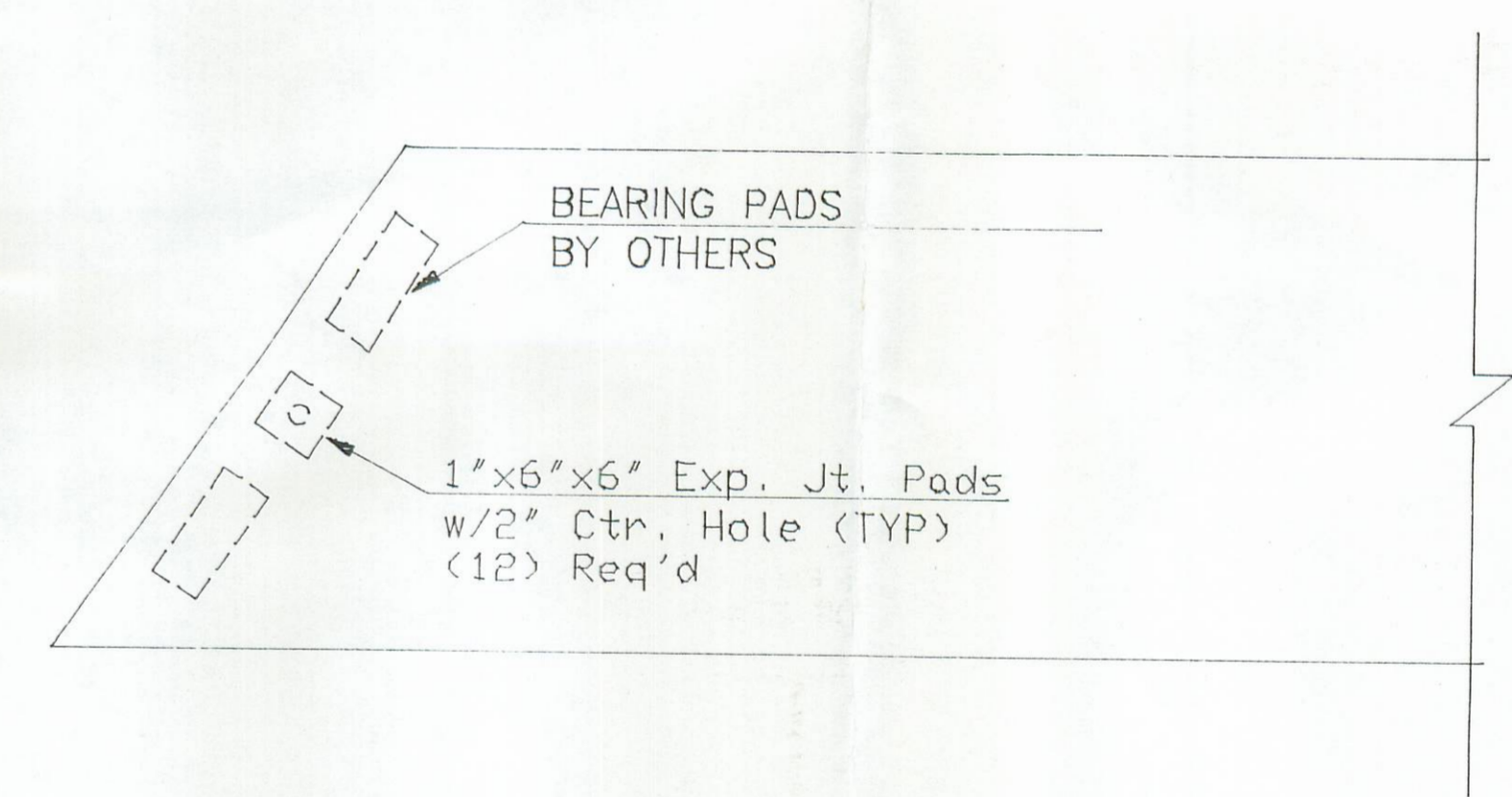


BEAM LAYOUT



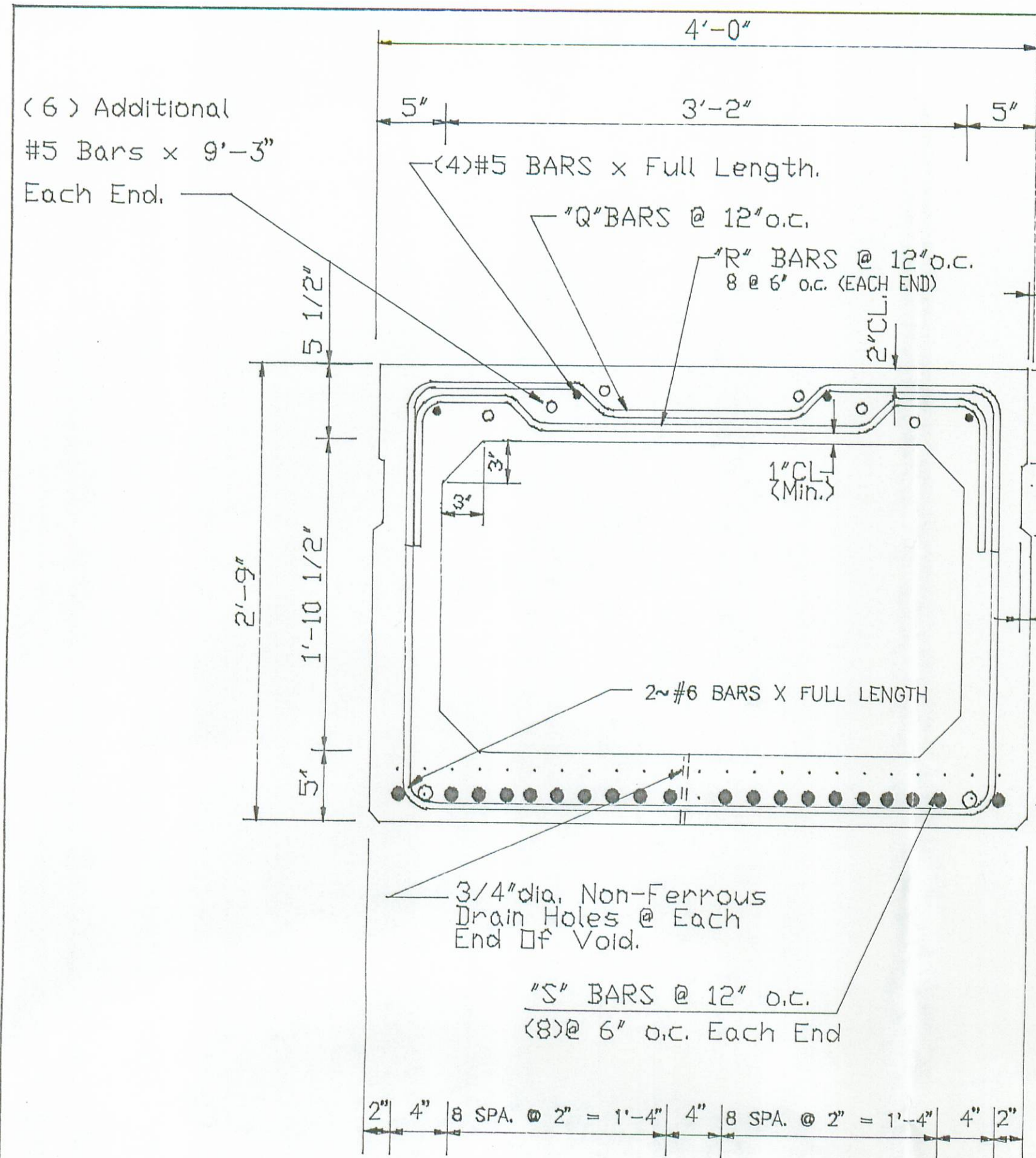
Sealing of Exterior Beam



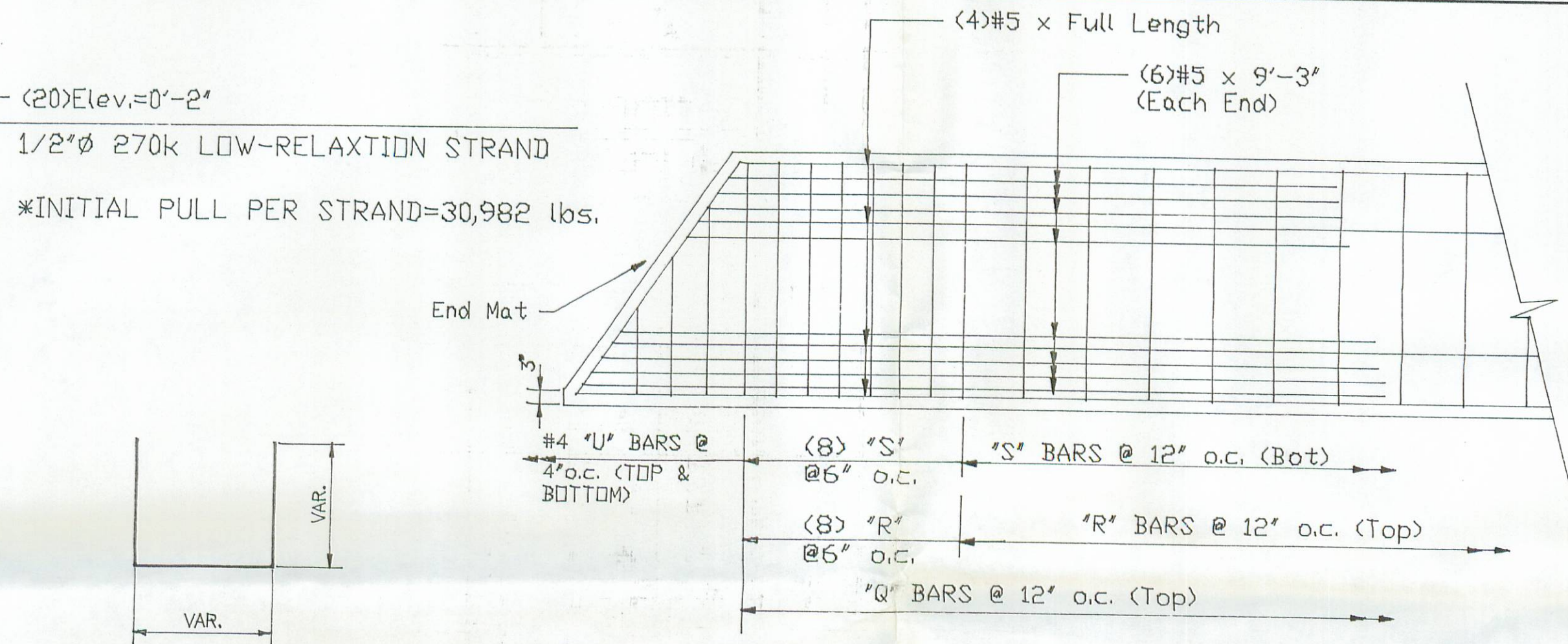
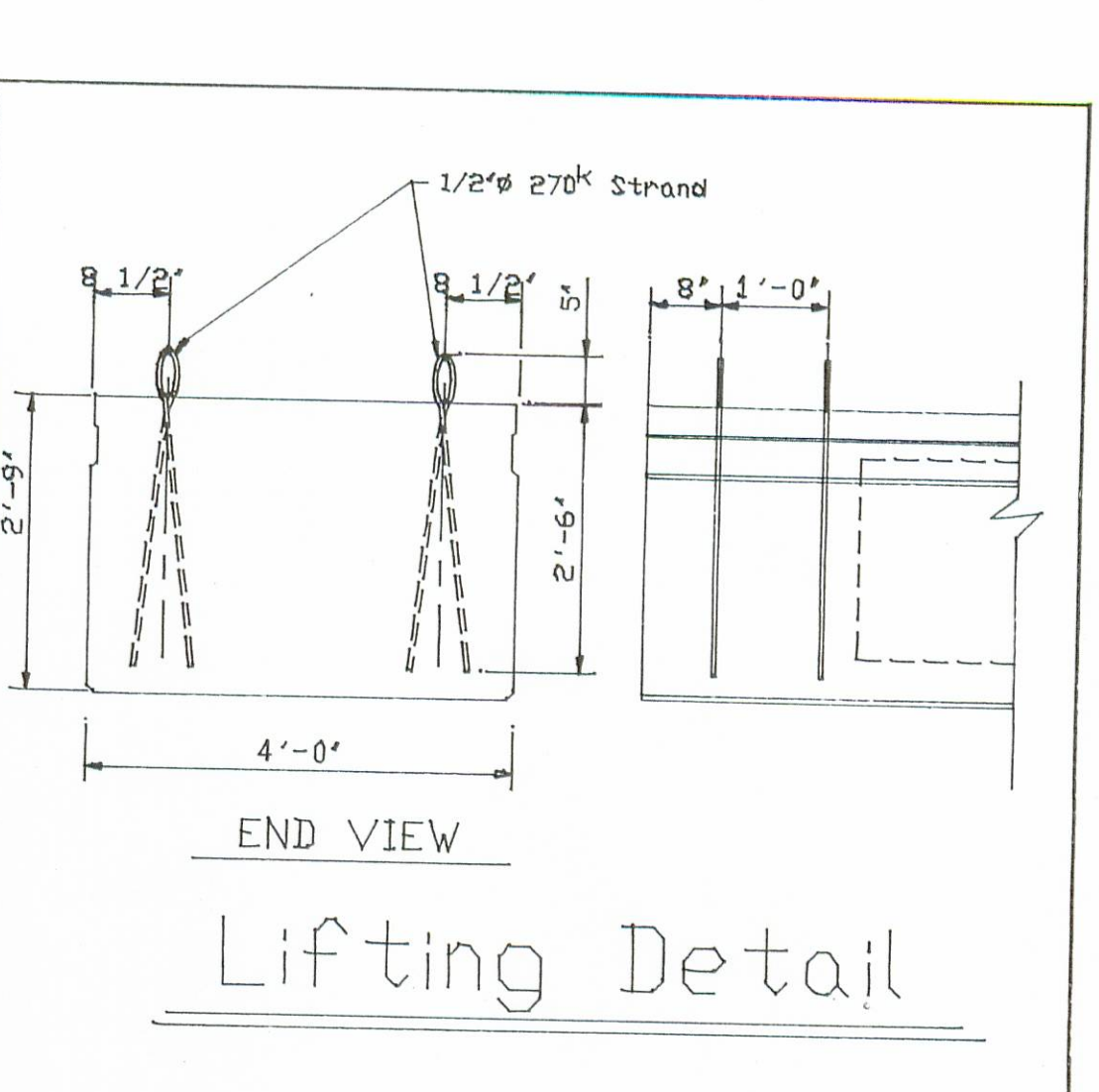
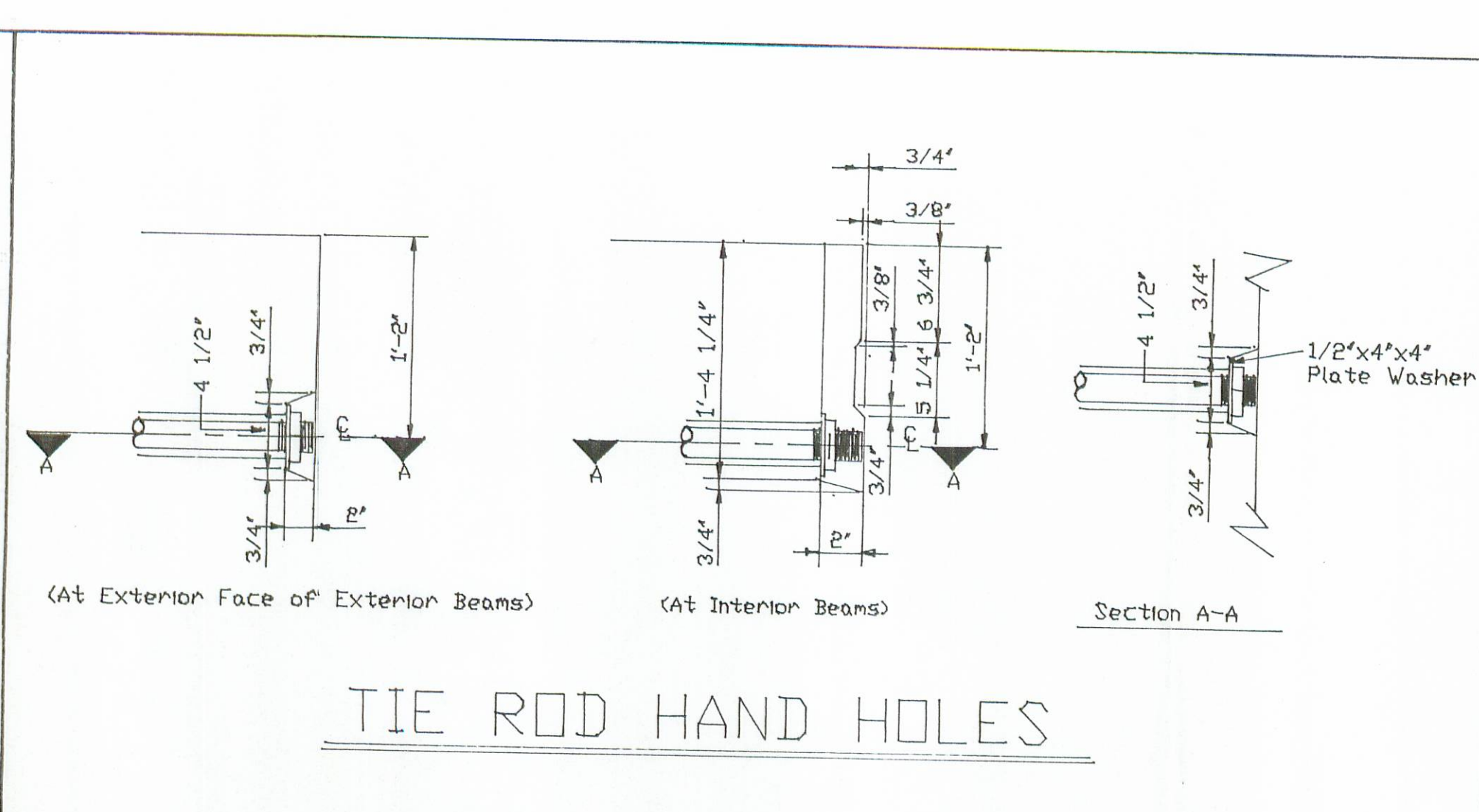
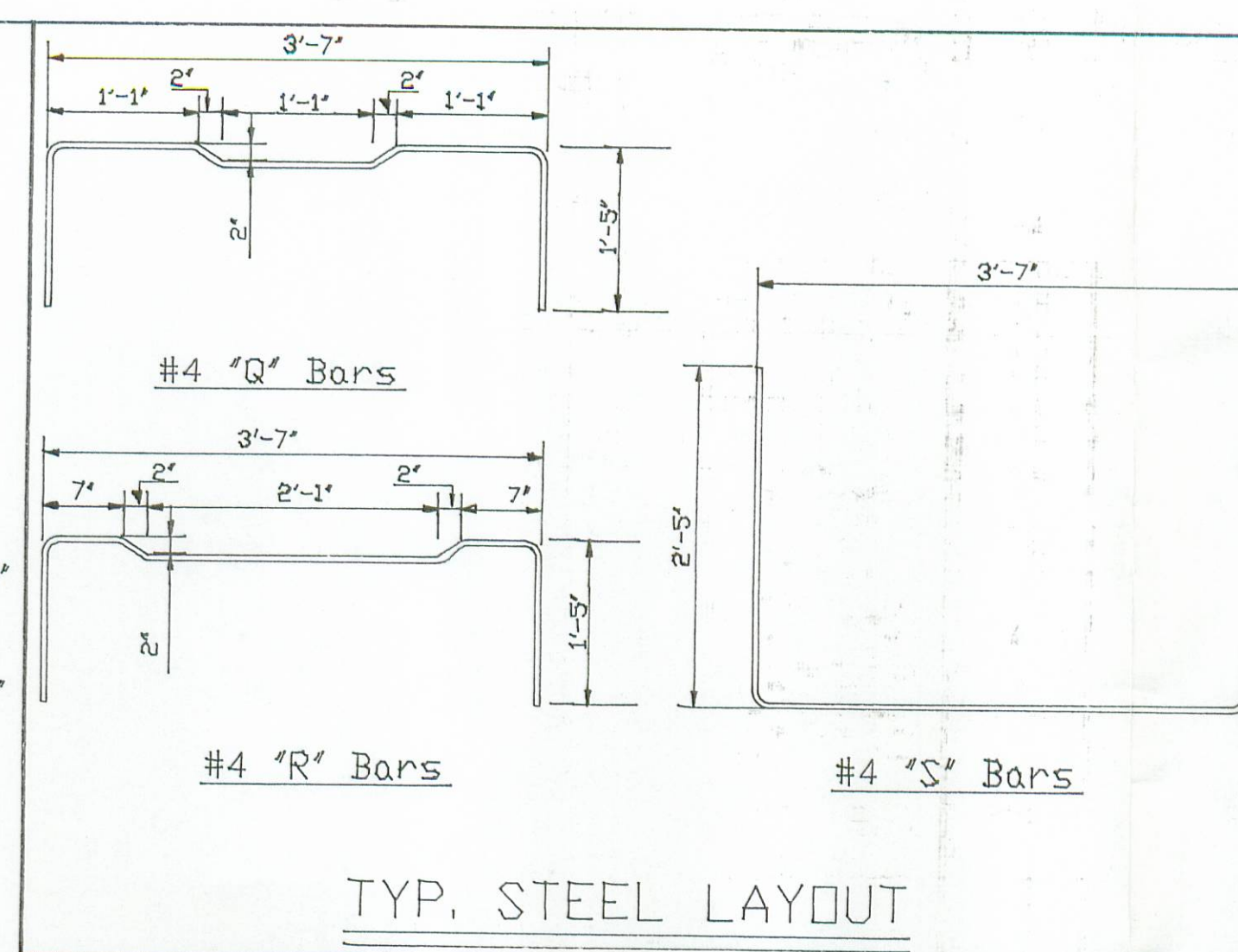
BEARING PAD PLACEMENT DETAIL

APPROVED
BY LOGAN CO. ENGINEER
COE 7-78

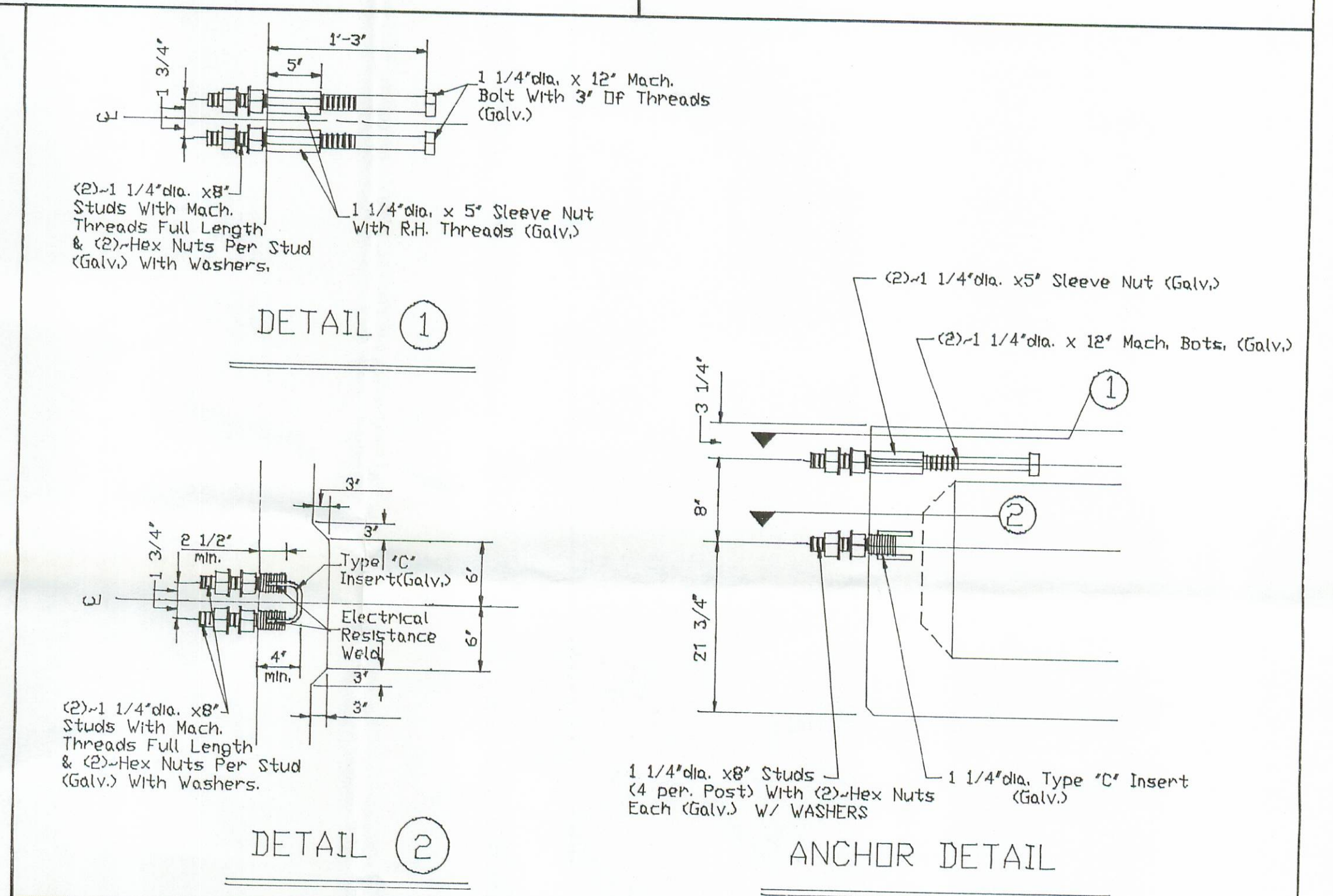
REVISIONS				Proj: LOGAN COUNTY	
NO.	Description	Date	By	Br. No.	208-0.91
				County, State:	LOGAN COUNTY, OHIO
				Location:	
				Contractor:	FL WILLIAMS
				Date:	3-30-95
				Drawn By:	J.G.H.
				Checked By:	<i>J.H.N.T.</i>
				P.C.#	8433
				Sheet No.	3405
				Drawing No.	1 of 2



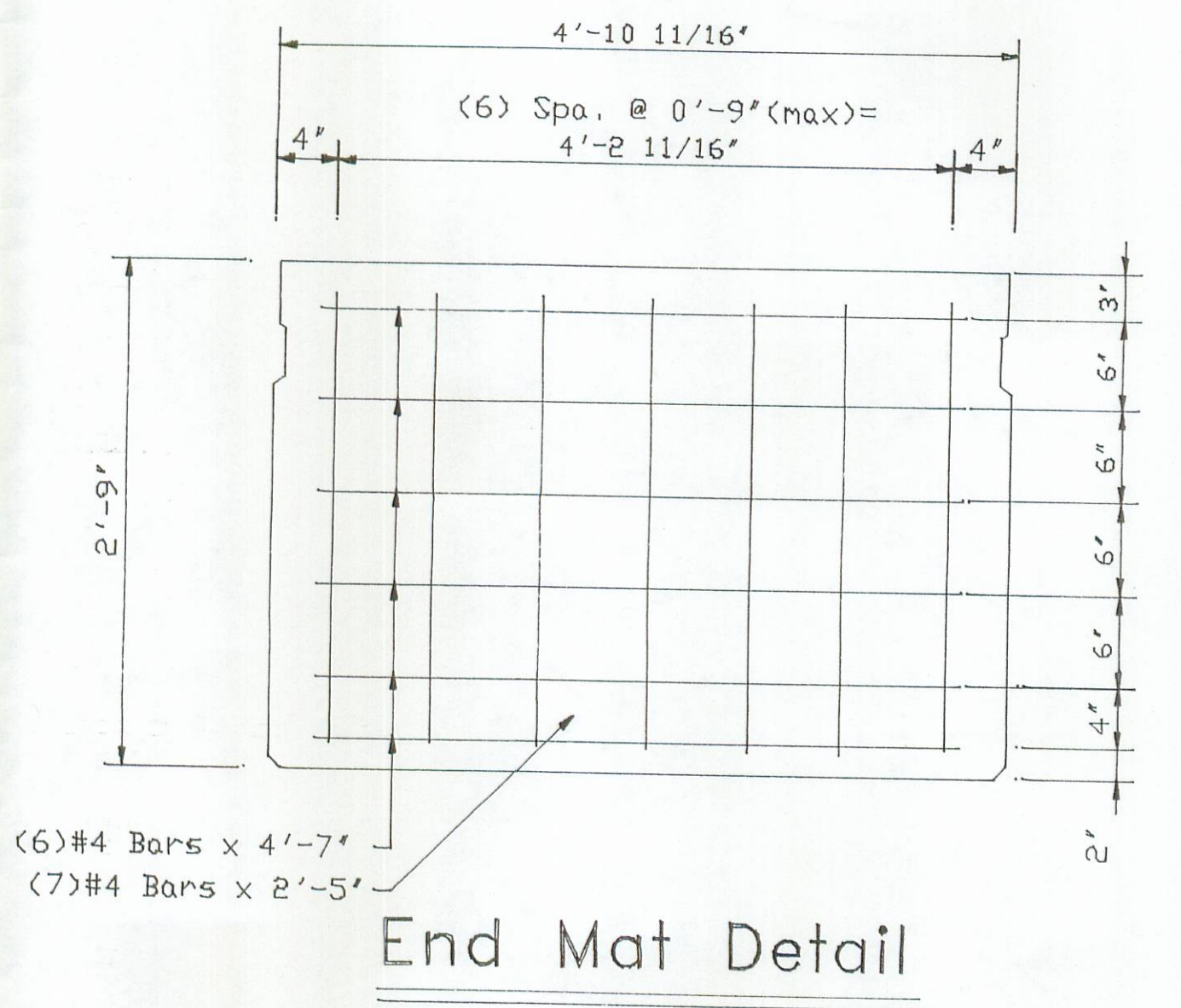
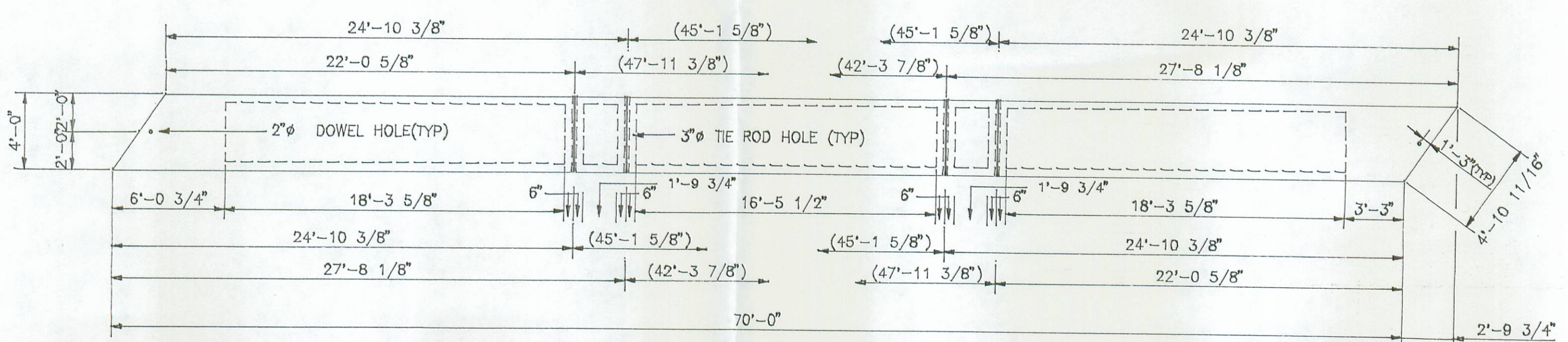
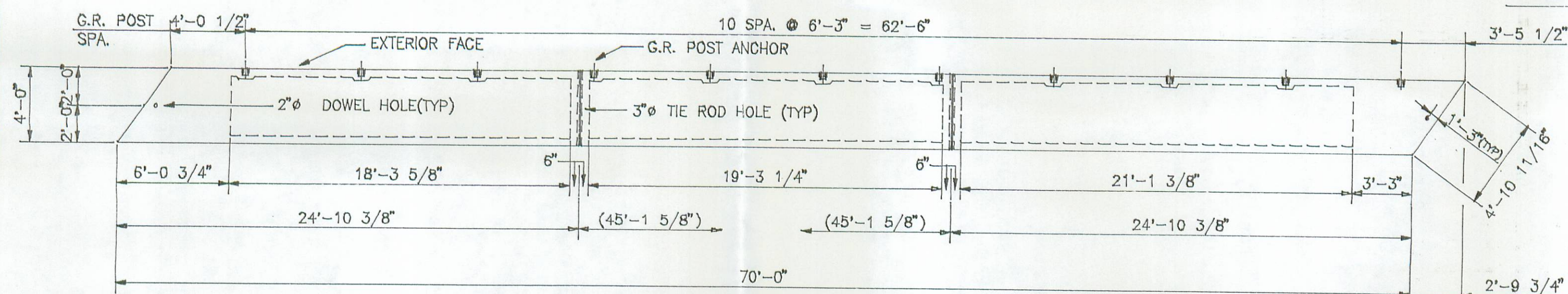
Typ. Cross Section.



BEAM END REINFORCING DETAIL



- NOTES:
1. CONCRETE STRENGTH AT TIME OF PRESTRESSING IS 4000 P.S.I., AND AT 28 DAYS IS 5500 P.S.I.
 2. DETENSION STRAND SYMMETRICALLY ABOUT CENTER LINE
 3. LOADING= HS-20-44 & ALTERNATE MILITARY.
 4. BEAM WEIGHT=SEE BEAM PLAN
 5. TOP SURFACE OF BEAMS GIVEN A LIGHT BROOM FINISH.
 6. ANTICIPATED CAMBER AS SHOWN ON PROJECT PLANS IS: 1 1/4"
 7. WATERPROOF BEAM ENDS
 8. OMIT KEYWAY ON EXTERIOR FACE OF EXTERIOR BEAMS.
 9. SANDBLAST ALL KEYWAYS
 10. ALL REINFORCING STEEL TO BE GRADE 60 STEEL
- CHANGES ARE NOTED AS DIFFERENT FROM D.D.O.T. STD. DWG. P.S.B.D.-1-81 AND ARE VARIED PER. NOTE ON P.S.B.D.-1-81 SHT. 2 OF 4.
- CHANGE NOTES
1. 6'/6" Keyway To 6 3/4"/5 1/4" Keyway.



REVISIONS				Project: LOGAN COUNTY	
NO.	Description	Date	By	Br. No:	208-0.92
				County, State:	LOGAN COUNTY, OHIO
				Location:	
				Contractor:	RL WILLIAMS
				Date:	3-30-95
				Drawn By:	J.G.H.
				Checked By:	4.6.95
				P.C.#:	8433
				Job No.	3405
				Drawing No.	2 of 2