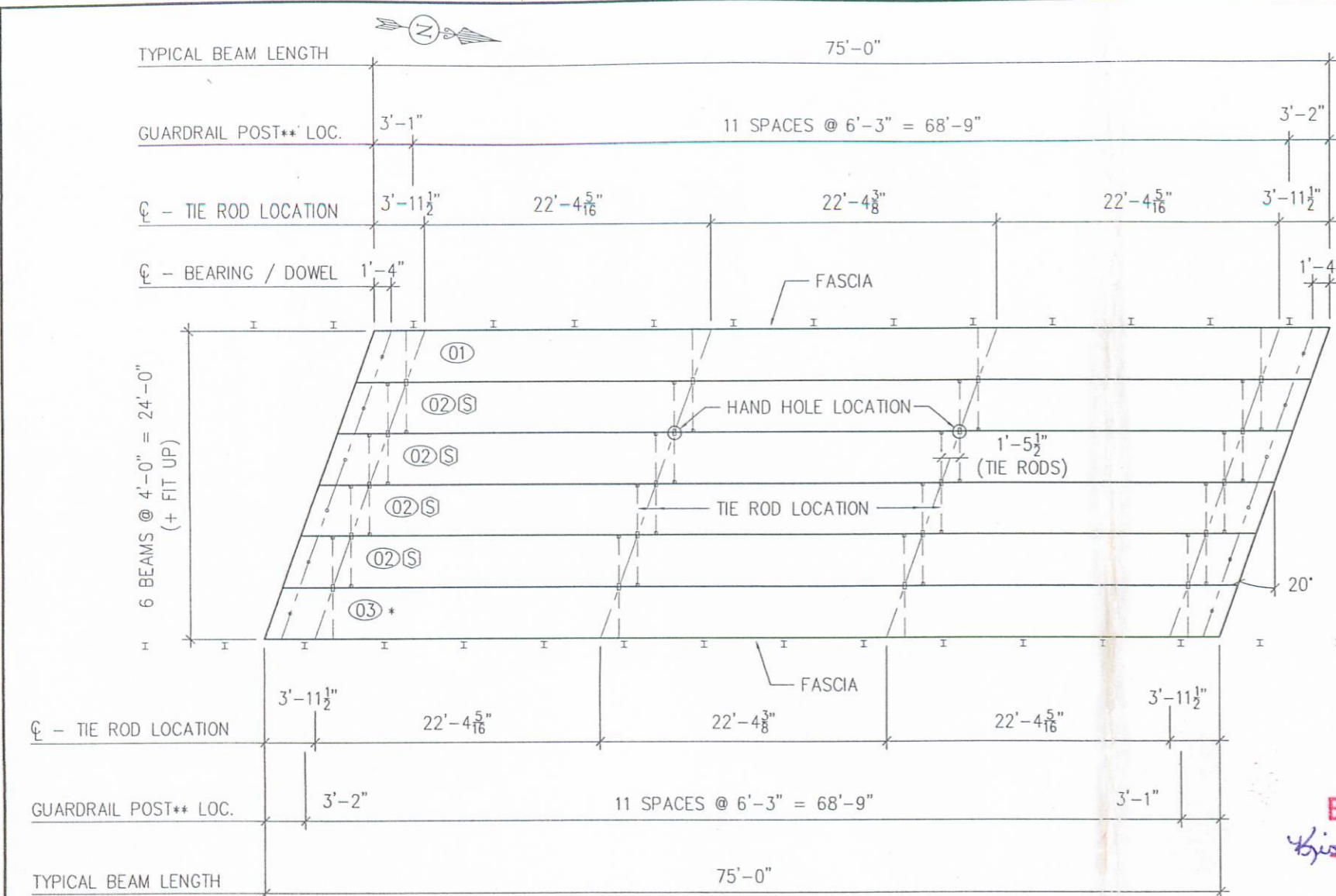


D6141_Prelim.dwg-Layout1

12:51 PM

04-05-06



**** GUARDRAIL NOTE:**
 POSTS, RAIL, TUBULAR BACK-UP & (8) APPROACH POSTS BY PSI. SHIP POSTS INSTALLED REMAINDER SHIPPED LOOSE

APPROACH POSTS BY PSI (8 REQD.) - SHIP LOOSE

BEAM MARK	NO. REQD.	WEIGHT	SHIPPING WEIGHT
01	1	72,121 LBS.	38 TON
02	4	72,259 LBS.	38 TON
03*	1	72,121 LBS.	38 TON

NOTE:
 PSI SHALL FURNISH, INCIDENTAL TO BEAMS:

- (20) 1" x 8' TIE RODS
- (40) 1/2" x 4" SQ. PLATE WASHERS
- (40) 1" HEX NUTS
- (12) 1" x 3'-9" DOWEL RODS (SMOOTH, A-311)
- (24) 1" x 8" x 1'-8" PLAIN ELASTOMERIC BEARING PADS
- (24) 1/8" x 8" x 1'-8" PREFORMED SHIM PAD
- (12) 1" x 6" SQ. PEJF GROUT RETAINERS
- (52 LF) 1" x 2" PEJF STRIP
- (65 LF) 8 STRAND JUTE *Asphalt Joint Sealer*
- (AS REQD.) INTERPLAST - N

24 ODOT TYPE 2 POSTS, INSTALLED USING:

- (96) 1 1/4" x 8" STUDS (All Thrd)
- (192) 1 1/4" HEX NUTS
- (192) 1 1/4" WASHERS
- (162'-6" LF) STD. DEEP BEAM GUARDRAIL (SHIP LOOSE)
- (162'-6" LF) STD. TUBULAR BACK-UP (SHIP LOOSE)
- (8) W6 X 25 APPROACH POSTS

APPROVED
 BY LOGAN CO. ENGINEER
Christina D. Payne PE 4/10/2006

* IDENTICAL TO MK.01 BY 180° ROTATION

BRIDGE PLAN
 S = BEAM IS SYMMETRICAL

GENERAL NOTES:

- 1) MANUFACTURE BEAMS IN ACCORDANCE WITH THE ODOT SPECIFICATIONS.
- 2) MINIMUM CONCRETE STRENGTH @ RELEASE OF STRAND = 4,000 P.S.I.
 MINIMUM CONCRETE STRENGTH @ 28 DAYS = 5,500 P.S.I.
- 3) STRAND SHALL BE (7) WIRE, UNCOATED, LOW RELAXATION, 1/2" "REGULAR" DIA. (As=0.153 SQ. IN.), 270 K.S.I. ULTIMATE STRENGTH.
- 4) PULL EACH STRAND TO 30,982 LBS.
- 5) STEEL GRADE 60, A.S.T.M. A-615.
- 6) BROOM FINISH TOPS OF BEAMS.
- 7) HS20-44 & THE ALTERNATE MILITARY LOADING.
- 8) CONCRETE MIX SHALL CONTAIN RUSTEC'S "RCI" CORROSION INHIBITOR; DOSAGE SHALL BE 4 GALLONS PER CUBIC YARD OF CONCRETE.
- 9) ALL ANCHOR BOLTS, STUDS, INSERTS, TIE RODS, NUTS, & WASHERS SHALL BE GALVANIZED, PER ODOT SPECIFICATIONS.
- 10) KEYWAYS SHALL RECEIVE A MEDIUM SANDBLAST AT THE PLANT WITHIN FOUR DAYS PRIOR TO SHIPPING.
- 11) BEAM ENDS (ENTIRE) SHALL BE SEALED WITH BITUMINOUS COATING.

STANDARD ERECTION PROCEDURE:

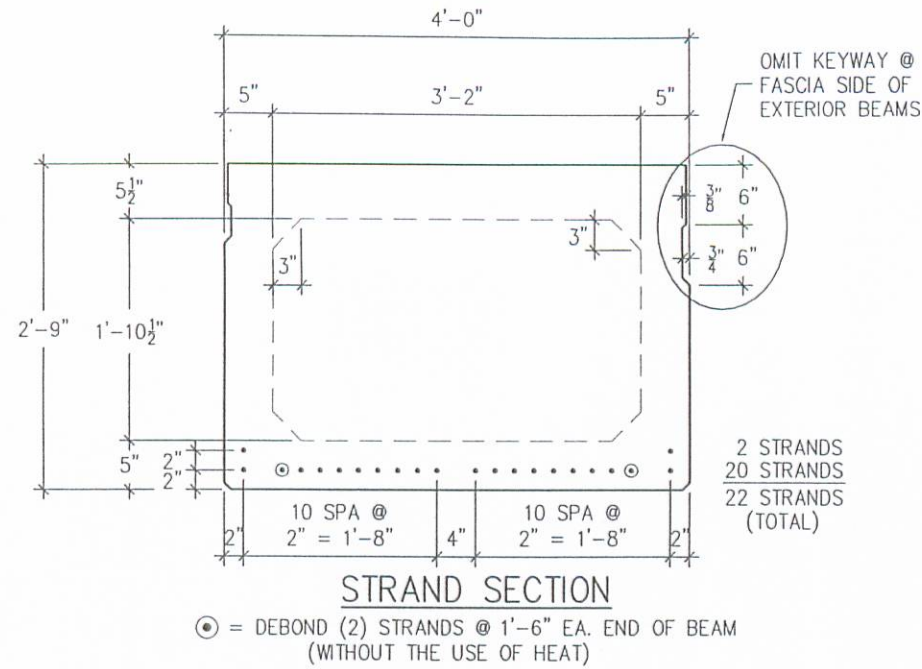
ALL LIFTING LOOPS SHOWN MUST BE USED SIMULTANEOUSLY AND EQUALLY, 90° TO THE BEAM, WHILE ERECTING WITH 2 CRANES. ANY DEVIATION FROM THIS STANDARD FOR ERECTING PURPOSES IS THE RESPONSIBILITY OF THE CONTRACTOR. THE CONTRACTOR IS ADVISED TO HAVE AN ENGINEER REVIEW ANY DEVIATION FROM THIS STANDARD WITH CONSIDERATION GIVEN TO BEAM STRESSES, STRENGTH AND STABILITY. PRESTRESS SERVICES INC. WILL NOT BE LIABLE FOR ANY VARIATIONS TO THE STANDARD PROCEDURE.

PRESTRESS SERVICES INDUSTRIES, LLC			
PROJECT OVERVIEW			
LOGAN COUNTY, OHIO BRIDGE 137-0.49			
CONTRACTOR: LOGAN COUNTY ENGINEERS			
PRODUCING PLANT: 7855 N.W. Winchester Rd Decatur, IN 46733 PH: (260) 724-7117 FAX: (260) 724-3349		DRAFTING OFFICE: P.O. BOX 211 MELBOURNE, KY 41059 PH: (859) 441-0068 FAX: (859) 441-7986	
PRELIMINARY 3-31-06	DATE: 3-31-06	DRAWN BY: EDD	CHECKED: GDA
	REVISIONS		
CODE: B33x480		SHEET: 1 of 4	JOB NO: D6141

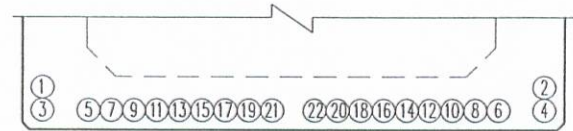
D6141_Prelim.dwg-Layout1 (2)

12:51 PM

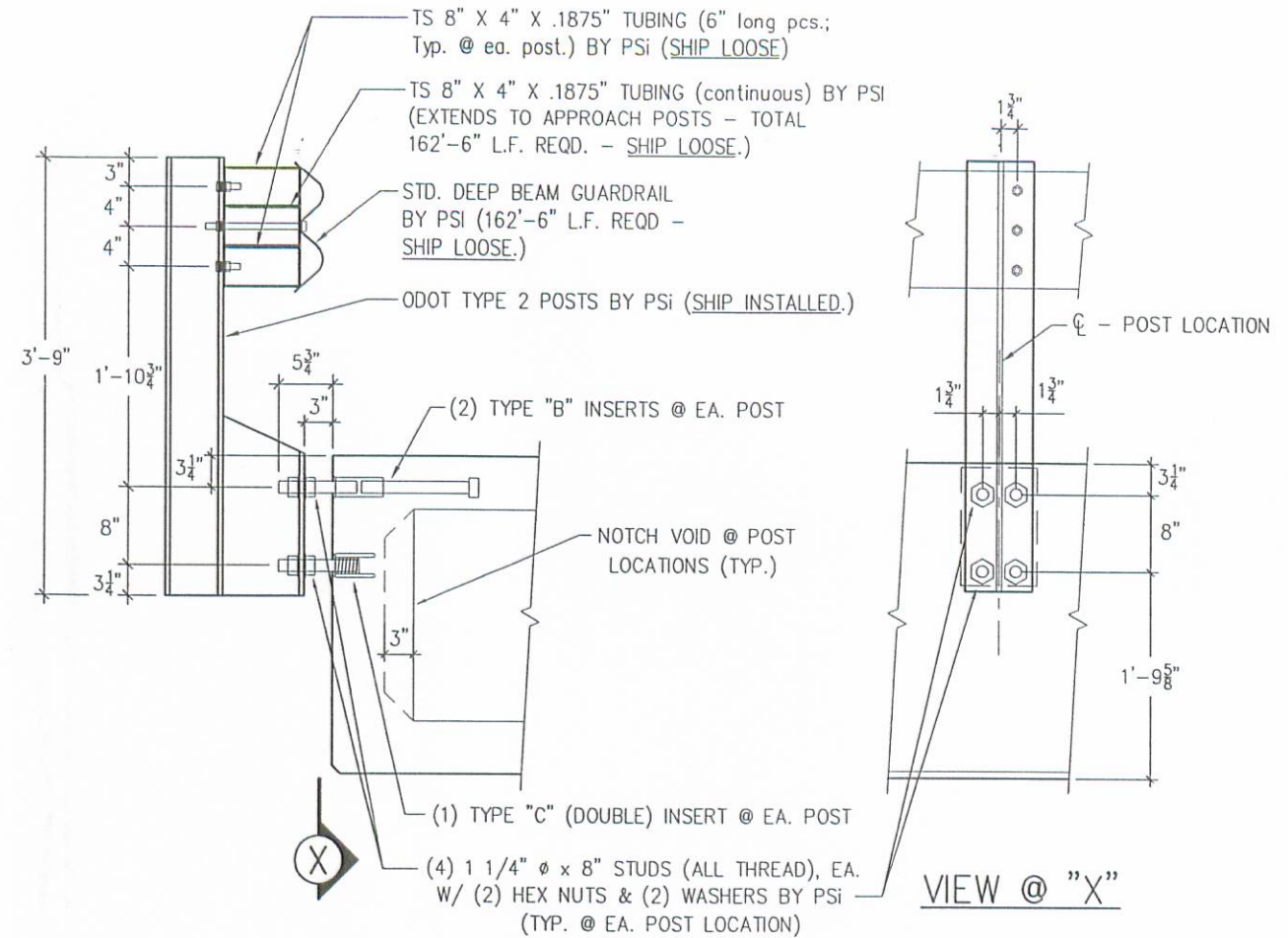
04-05-06



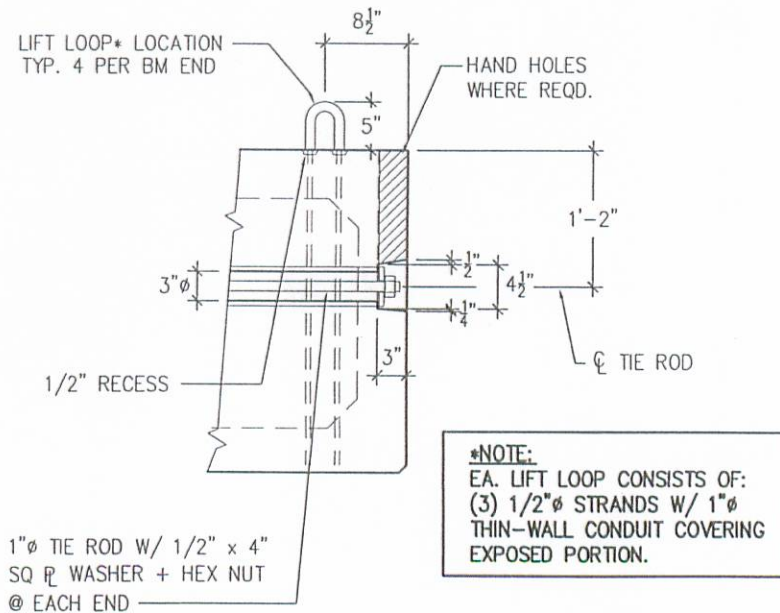
STRAND SECTION



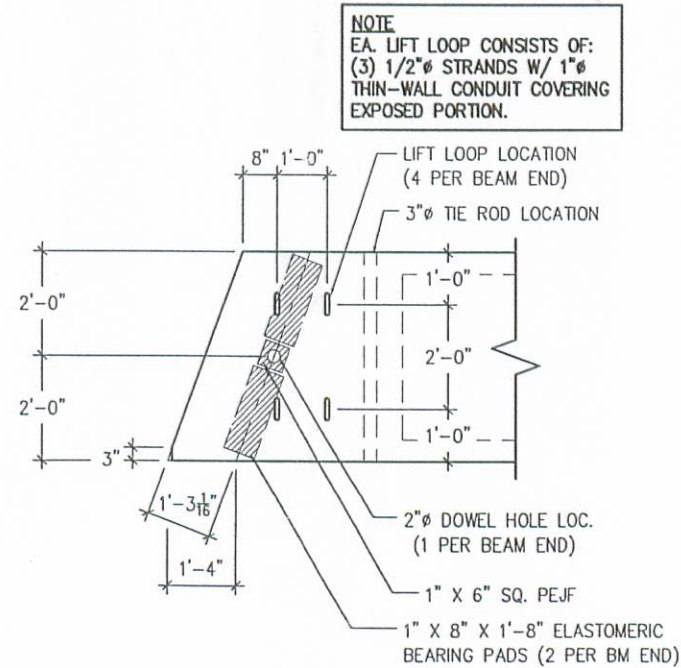
DETENSIONING PROCEDURE



GUARDRAIL INSERT DETAIL



TIE ROD DETAIL



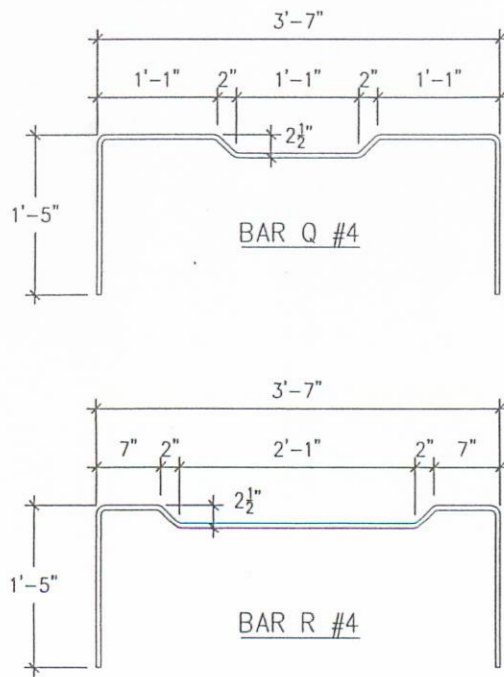
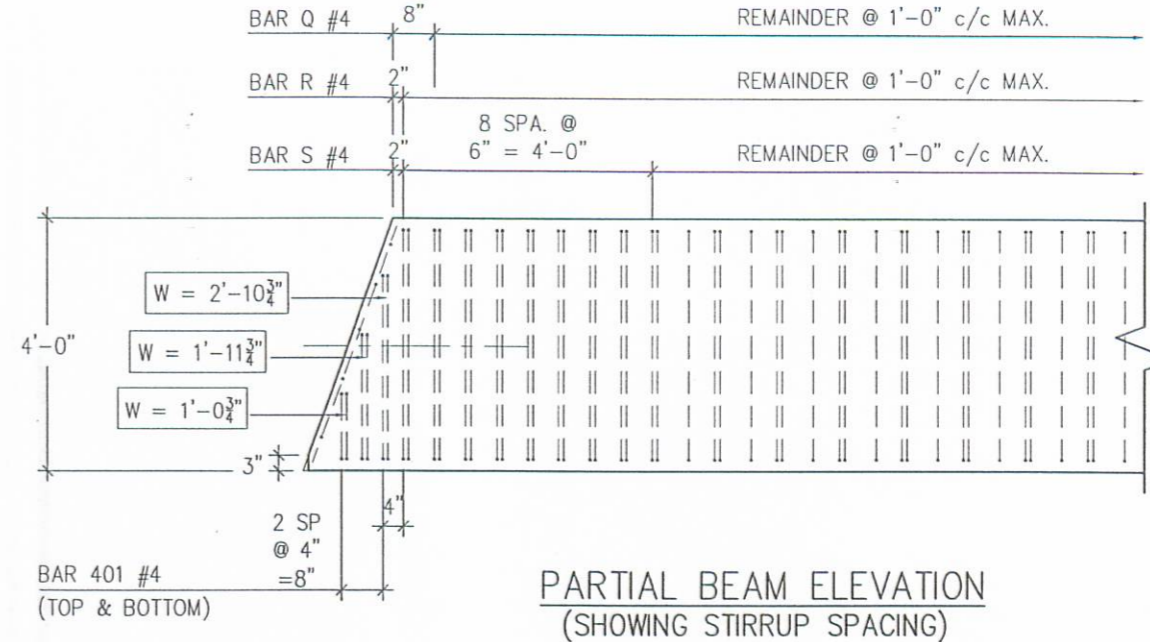
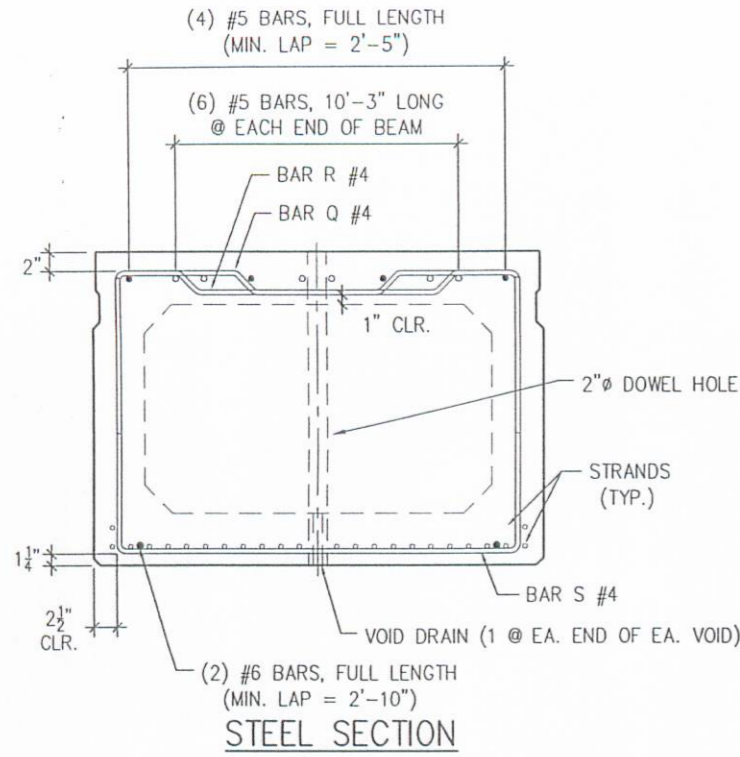
BEAM END PLAN

PRESTRESS SERVICES INDUSTRIES, LLC			
STRAND & DETAIL			
LOGAN COUNTY, OHIO BRIDGE 137-0.49			
CONTRACTOR: LOGAN COUNTY ENGINEERS			
PRODUCING PLANT: 7855 N.W. Winchester Rd Decatur, IN 46733 PH: (260) 724-7117 FAX: (260) 724-3349		DRAFTING OFFICE: P.O. BOX 211 MELBOURNE, KY 41059 PH: (859) 441-0068 FAX: (859) 441-7986	
PRELIMINARY 3-31-06	DATE: 3-31-06	DRAWN BY: EDD	CHECKED: GDA
REVISIONS			
CODE: B33x480		SHEET: 2 of 4	
JOB NO: D6141			

D6141_Prelim.dwg-Layout1 (3)

12:51 PM

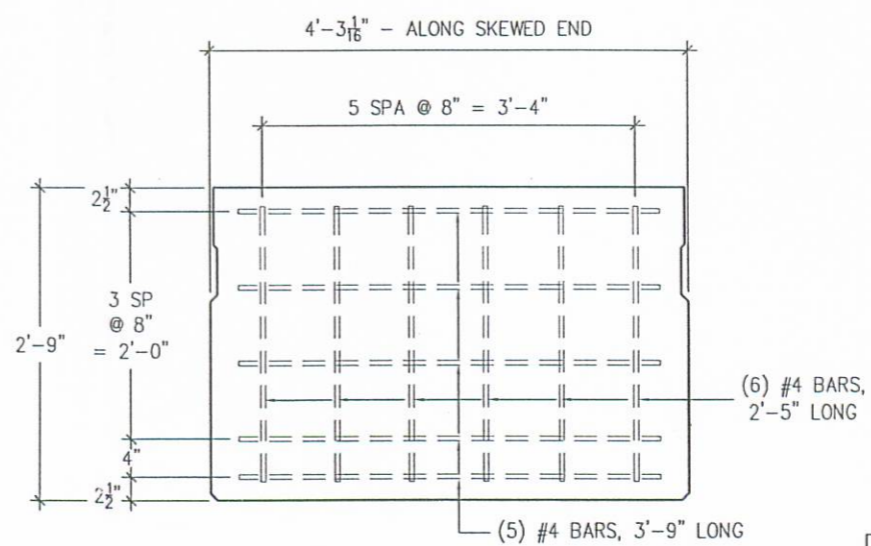
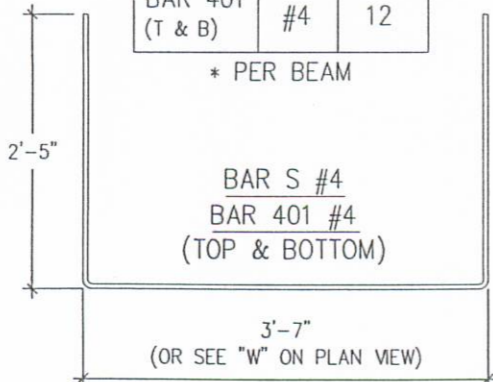
04-05-06



BENDING DIAGRAM

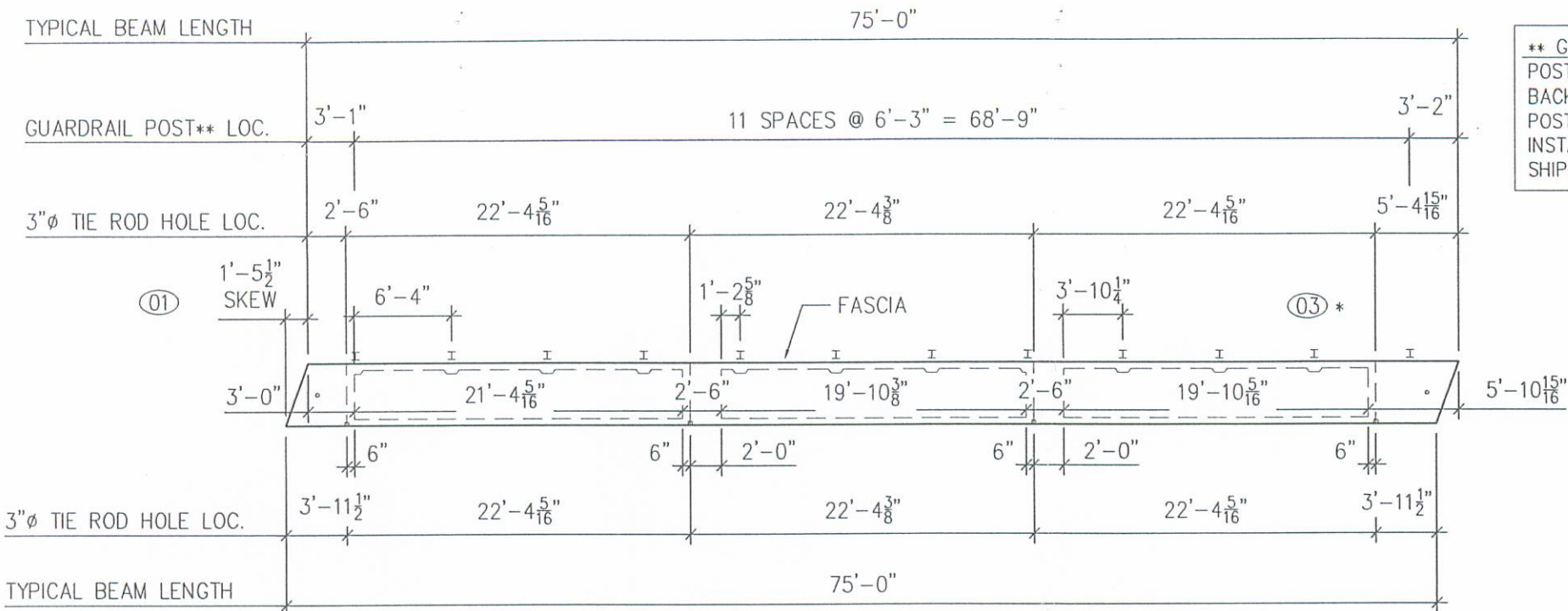
MARK	BAR SIZE	NO.* REQD.
BAR Q (TOP)	#4	75
BAR R (TOP)	#4	75
BAR S (BOTTOM)	#4	83
BAR 401 (T & B)	#4	12

* PER BEAM



END MAT DETAIL

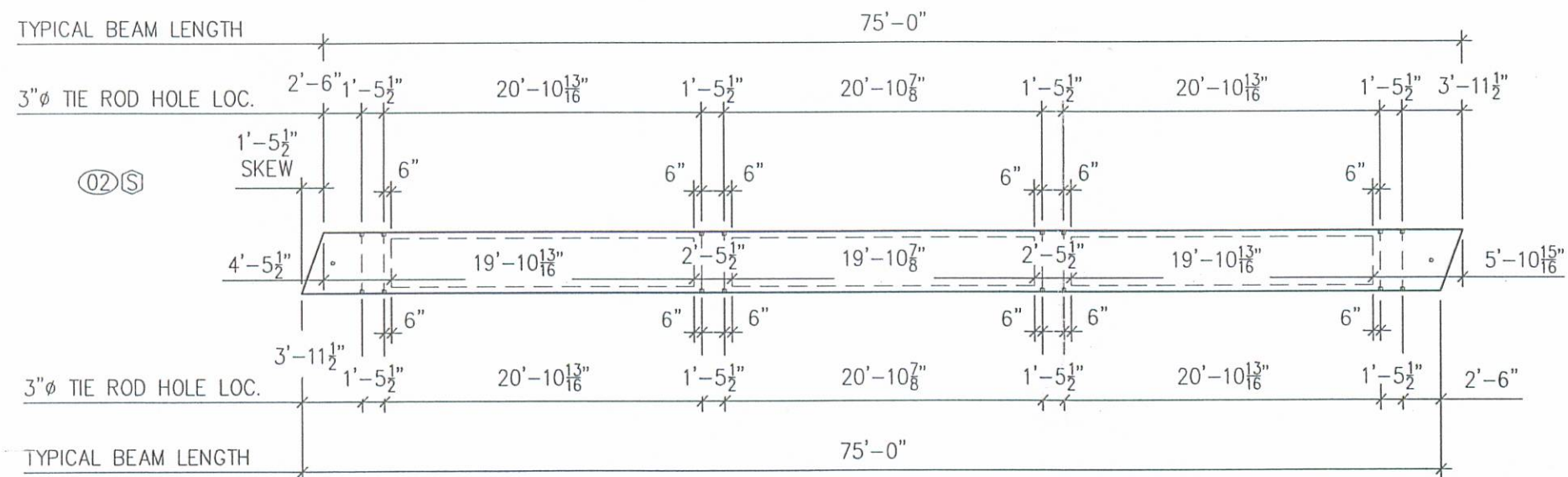
PRESTRESS SERVICES INDUSTRIAL LLC			
STEEL & DETAIL			
LOGAN COUNTY, OHIO BRIDGE 137-0.49			
CONTRACTOR: LOGAN COUNTY ENGINEERS			
PRODUCING PLANT: 7855 N.W. Winchester Rd Decatur, IN 46733 PH: (260) 724-7117 FAX: (260) 724-3349		DRAFTING OFFICE: P.O. BOX 211 MELBOURNE, KY 41059 PH: (859) 441-0068 FAX: (859) 441-7986	
PRELIMINARY 3-31-06	DATE: 3-31-06	DRAWN BY: EDD	CHECKED: GDA
	REVISIONS		
CODE: B33x480		SHEET: 3 of 4	
JOB NO: D6141			



**** GUARDRAIL NOTE:**
 POSTS, RAIL, TUBULAR
 BACK-UP & (8) APPROACH
 POSTS BY PSI. SHIP POSTS
 INSTALLED REMAINDER
 SHIPPED LOOSE

TIE ROD / VOID LAYOUT MKS. 01 & 03* (1 REQD. EA. THUS) SHIPPING WT. = 38 TON

* IDENTICAL TO MK.01 BY 180° ROTATION



TIE ROD / VOID LAYOUT MK. 02 (4 REQD. THUS) SHIPPING WT. = 38 TON

Ⓢ = BEAM IS SYMMETRICAL

PRESTRESS SERVICES INDUSTRIES, LLC		
BEAM LAYOUTS		
LOGAN COUNTY, OHIO BRIDGE 137-0.49		
CONTRACTOR: LOGAN COUNTY ENGINEERS		
PRODUCING PLANT: 7855 N.W. Winchester Rd Decatur, IN 46733 PH: (260) 724-7117 FAX: (260) 724-3349	DRAFTING OFFICE: P.O. BOX 211 MELBOURNE, KY 41059 PH: (859) 441-0068 FAX: (859) 441-7986	
DATE: 3-31-06	DRAWN BY: EDD	CHECKED: GDA
PRELIMINARY 3-31-06	REVISIONS	
CODE: B33x480	SHEET: 4 of 4	JOB NO: D6141