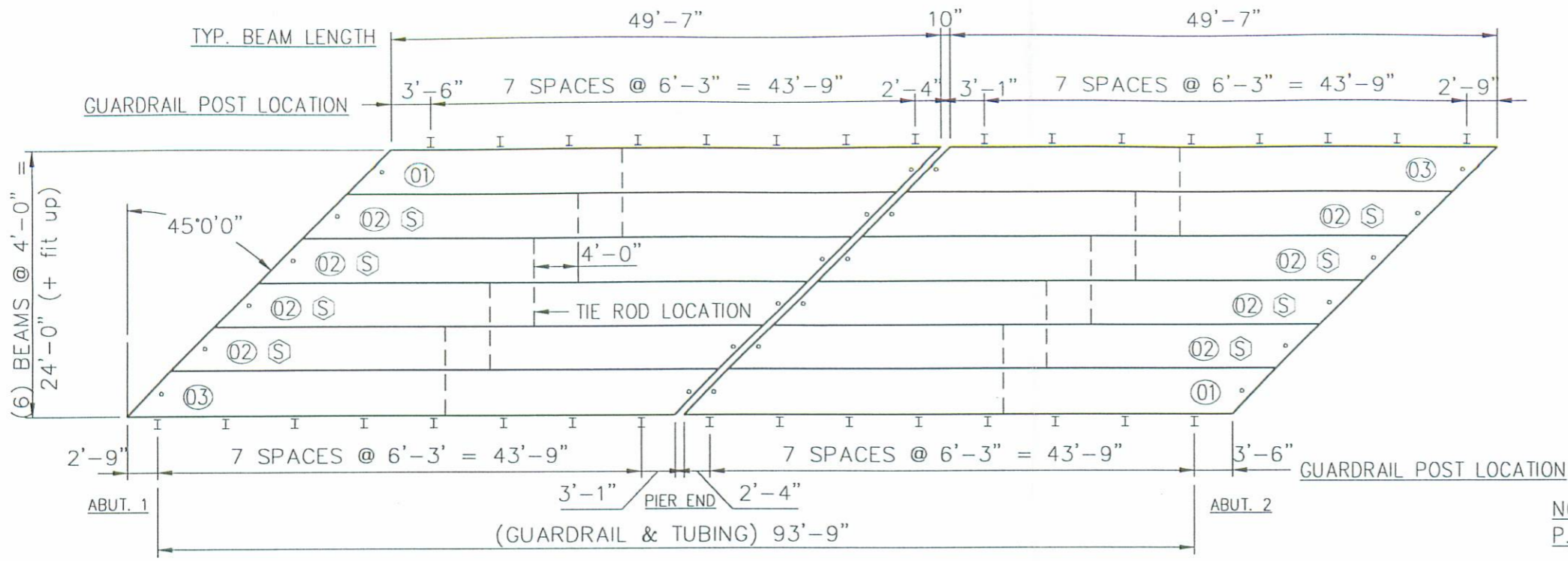


INNER-PLANT USE			
DATE	NO. of COPIES	DWG. STATUS	



BRIDGE PLAN
 S = SYMMETRICAL BEAMS

MARK NO.	NO. REQD.	WEIGHT
01	2	36,011 LBS.
02	8	37,338 LBS.
03	2	36,011 LBS.



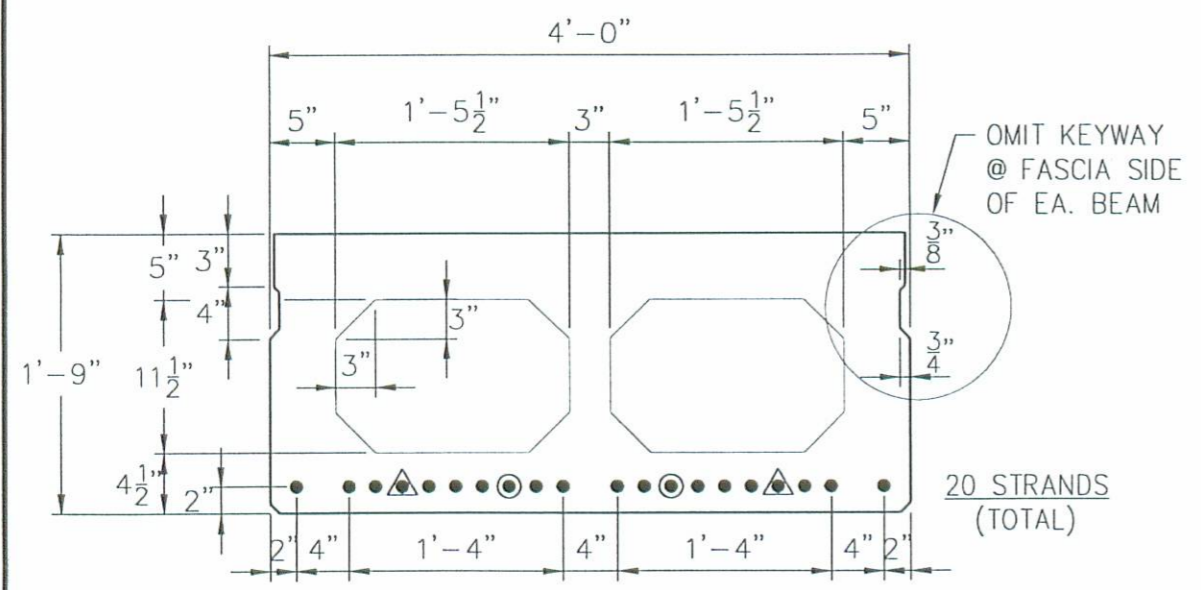
APPROVED
 BY LOGAN CO. ENGINEER
[Signature]
 3-22-00

NOTE:
 P.S.M. SHALL FURNISH, INCIDENTAL TO BEAMS:

- (10) 1"Ø x 8' TIE RODS
- (20) 1" x 4" SQ. PLATE WASHERS.
- (20) 1"Ø HEX NUTS.
- (12) 1"Ø x 2'-9" DOWEL RODS (SMOOTH)
- (12) 1"Ø x 2'-2" DOWEL RODS (SMOOTH)
- (24) 1" x 6" SQ. P.E.J.F.
- (70'-0") - P.E.J.F. 1" x 3"
- (35'-0") - P.E.J.F. 1" x 10"
- (48) 1" x 6" x 1'-3" ELASTOMERIC BEARING PADS.
- (32) W6 x 25 x 3'-9 1/2" GUARDRAIL POSTS + RAIL (INSTALLED ON BEAMS)
- (128) 1 1/4"Ø x 8" STUDS (ALL THREAD)
- (256) 1 1/4"Ø HEX NUTS
- (256) WASHERS

GENERAL NOTES:

- 1) MANUFACTURE BEAMS IN ACCORDANCE WITH THE ODOT SPECIFICATIONS.
- 2) MINIMUM CONCRETE STRENGTH @ RELEASE OF STRAND = 4,000 P.S.I.
 MINIMUM CONCRETE STRENGTH @ 28 DAYS = 5,500 P.S.I.
- 3) STRAND SHALL BE (7) WIRE, UNCOATED, LOW RELAXATION, 1/2" DIA., 270 K.S.I. ULTIMATE STRENGTH.
- 4) PULL EACH STRAND TO 30,982 LBS.
- 5) STEEL GRADE 60, A.S.T.M. A-615.
- 6) BROOM-FINISH TOPS OF BEAMS.
- 7) HS20-44 LOADING.
- 8) CONCRETE MIX SHALL INCLUDE ODOT APPROVED CORROSION INHIBITOR; DOSAGE SHALL BE PER MANUFACTURER'S RECOMMENDATIONS. (CNI)
- 9) ALL ANCHOR BOLTS, STUDS, INSERTS, TIE RODS, NUTS, & WASHERS SHALL BE GALVANIZED, PER ODOT SPECIFICATIONS.
- 10) KEYWAYS SHALL BE GIVEN A MEDIUM SANDBLAST AT THE PLANT WITHIN FOUR DAYS PRIOR TO SHIPPING.
- 11) AFTER DOWEL PLACEMENT, FILL HOLES @ FIXED END W/GROUT; FILL HOLES @ EXPANSION END WITH HOT POUR CRACK & JOINT SEALER.

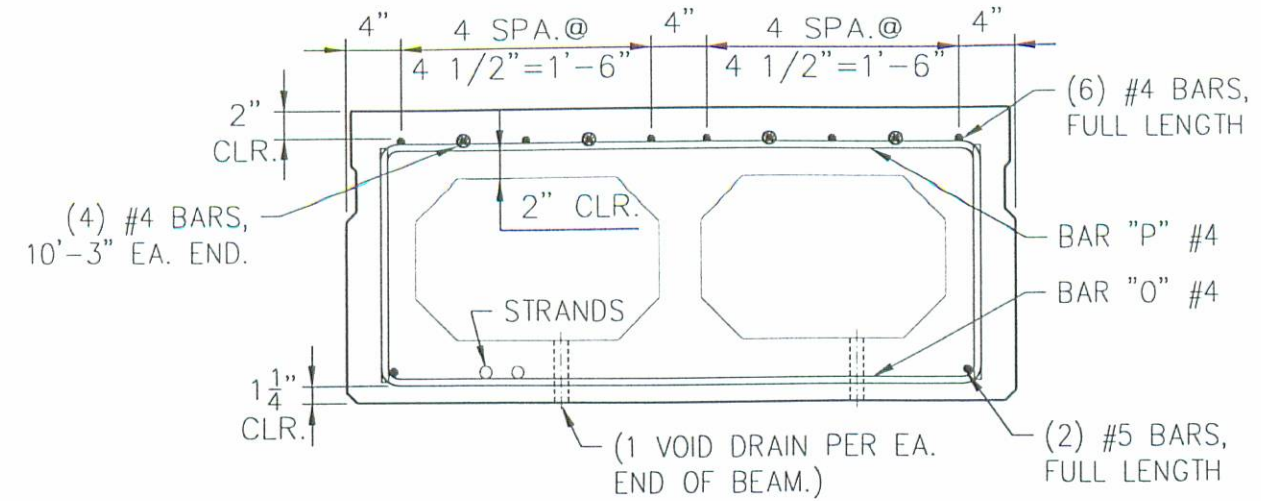


STRAND SECTION
 ▲ = DEBOND STRANDS @ 1'-6"
 ● = DEBOND STRANDS @ 2'-6"

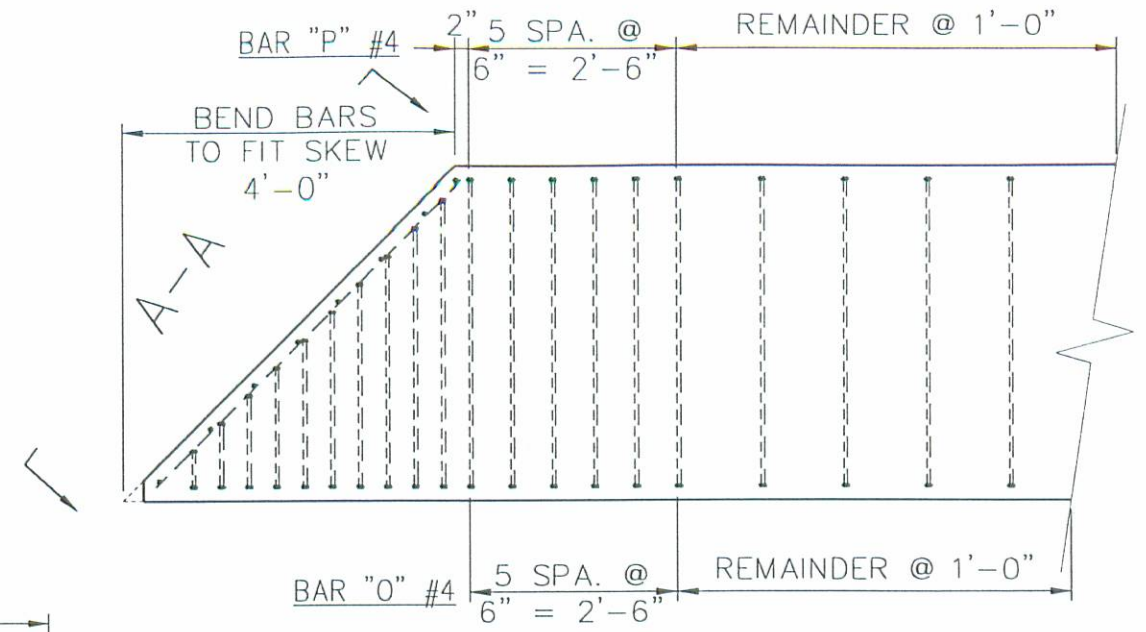
MAR 16 2000
 P.S.M.

DATE	BY	REVISION	PRODUCING PLANT:	AFFILIATES:	CONTRACTOR	PROJECT	SHOP NO.	
			PRESTRESS SERVICES ROUTE B P.O. BOX 211 MELBOURNE, KENTUCKY 41059 PH: (606) 441-0068 FAX: (606) 441-7986	7855 NW WINCHESTER RD. P.O. BOX 111 DECATUR, INDIANA 46733-0111 PH: (219) 724-7117 FAX: (219) 724-3349	HALEY ROAD P.O. BOX 55436 LEKINGTON, KENTUCKY 40555-5436 PH: (606) 299-0461 FAX: (606) 299-0147	COUNTY FORCES	LOGAN COUNTY, OHIO BRIDGE 117-0.94 BOKESCREEK TOWNSHIP	M0134
					DRAWN DATE WAH 3/13/00	CHECKED DATE APPROVED DATE	SHEET NO. 1 of 3	

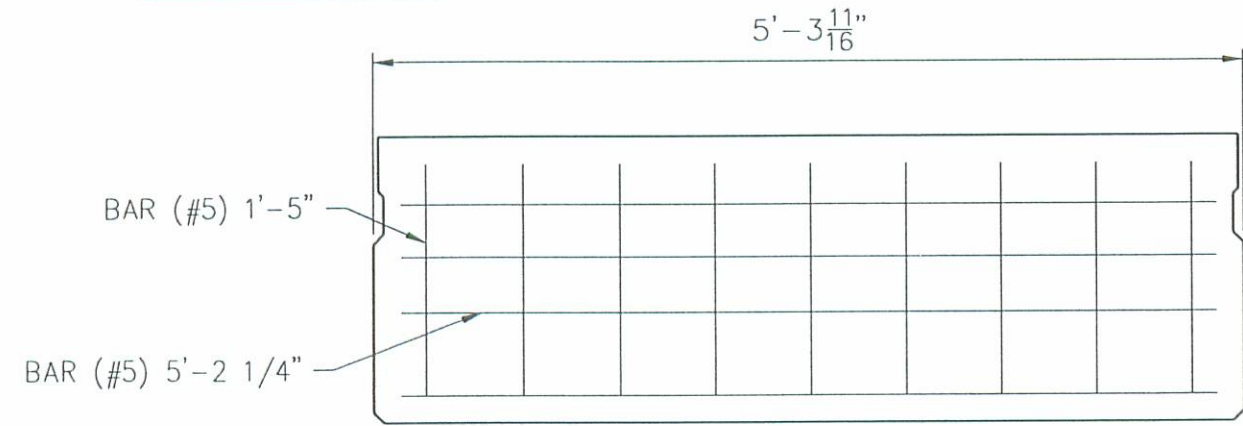
INNER-PLANT USE		
DATE	NO. of COPIES	DWC STATUS



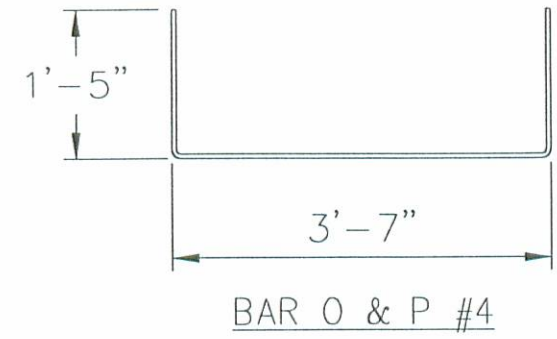
STEEL SECTION



STEEL ELEVATION
(SHOWING STIRRUP SPACING)

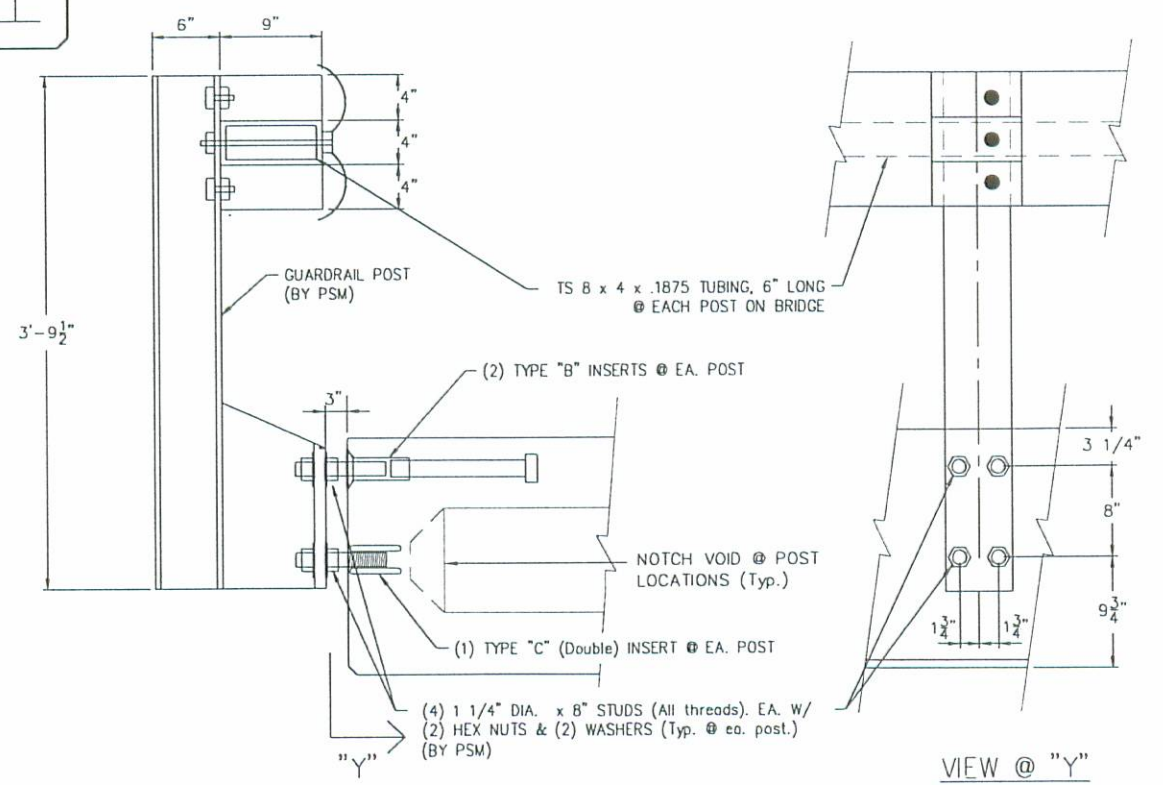


END MAT



BAR O & P #4

STIRRUP QUANTITIES PER BEAM		
MARK	BAR SIZE	NO. REQD.
BAR P	#4	57
BAR O	#4	57



GUARDRAIL INSERT DETAIL

MAR 16 2000 P.S.M.

DATE	BY	REVISION



PRODUCING PLANT:
ROUTE 8
P.O. BOX 211
MELBOURNE, KENTUCKY
41059
PH: (606) 441-0068
FAX: (606) 441-7985

AFFILIATES:
7855 NW WINCHESTER RD.
P.O. BOX 111
DECATUR, INDIANA
46733-0111
PH: (219) 724-7117
FAX: (219) 724-3349

HALEY ROAD
P.O. BOX 55436
LEXINGTON, KENTUCKY
40555-8436
PH: (606) 266-0461
FAX: (606) 299-0147

CONTRACTOR		COUNTY FORCES			
DRAWN	DATE	CHECKED	DATE	APPROVED	DATE
WAH	3/13/00				

PROJECT
LOGAN COUNTY, OHIO
BRIDGE 117-0.94
BOKESCREEK TOWNSHIP

SHOP NO.
M0134
SHEET NO.
3 of 3