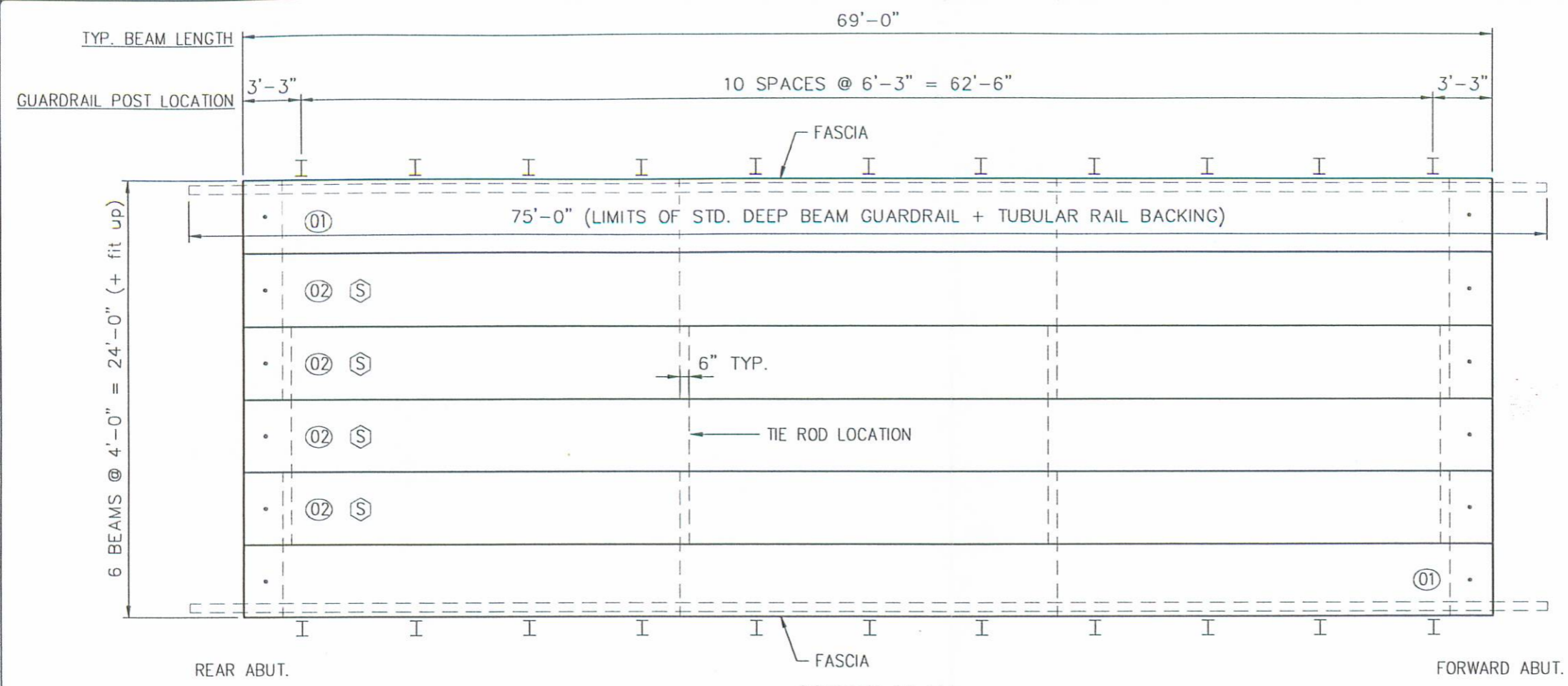
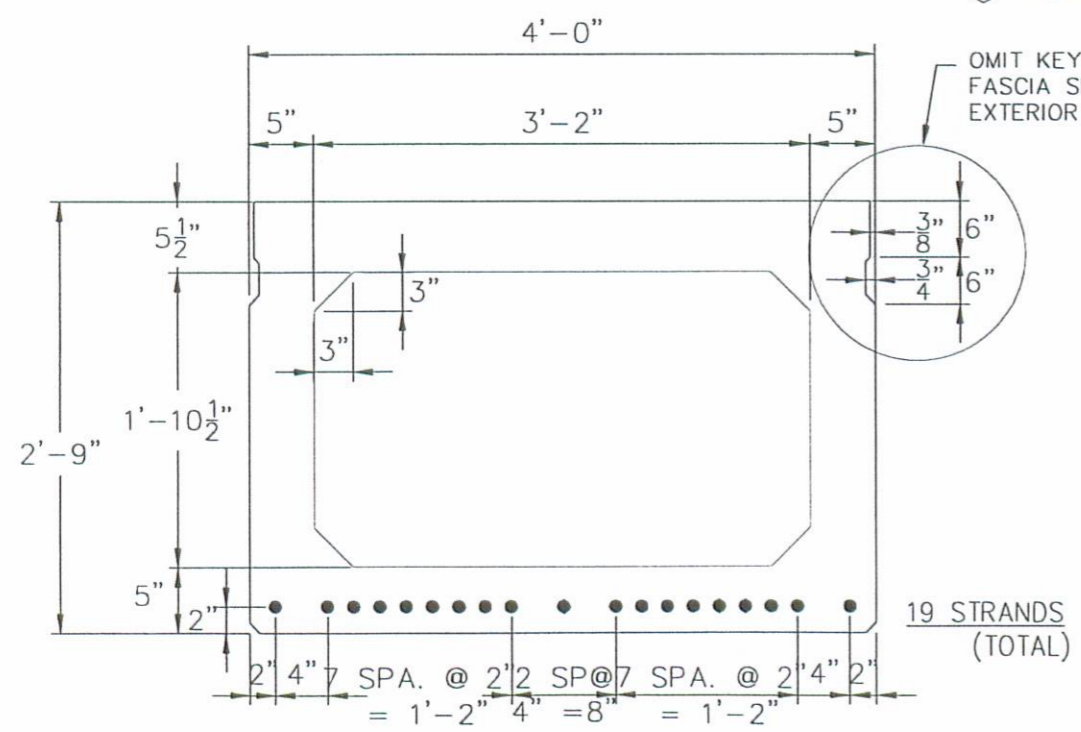


INNER-PLANT USE		
DATE	NO. of COPIES	DWC. STATUS



BRIDGE PLAN
 (S) = SYMMETRICAL BEAM



STRAND SECTION

GENERAL NOTES:

- 1) MANUFACTURE BEAMS IN ACCORDANCE WITH THE ODOT SPECIFICATIONS.
- 2) MINIMUM CONCRETE STRENGTH @ RELEASE OF STRAND = 4000 P.S.I.
MINIMUM CONCRETE STRENGTH @ 28 DAYS = 5,500 P.S.I.
- 3) STRAND SHALL BE (7) WIRE, UNCOATED, LOW RELAXATION, 1/2" DIA., 270 K.S.I. ULTIMATE STRENGTH.
- 4) PULL EACH STRAND TO 30,982 LBS.
- 5) STEEL GRADE 60, A.S.T.M. A-615.
- 6) BROOM FINISH TOPS OF BEAMS.
- 7) HS20-44 & THE ALTERNATE MILITARY LOADING.
- 8) ALL ANCHOR BOLTS, STUDS, INSERTS, TIE RODS, NUTS, & WASHERS SHALL BE GALVANIZED, PER ODOT SPECIFICATIONS.
- 9) KEYWAYS SHALL BE GIVEN A MEDIUM SANDBLAST AT THE PLANT WITHIN FOUR DAYS PRIOR TO SHIPPING.
- 10) CONCRETE MIX SHALL INCLUDE ODOT APPROVED CORROSION INHIBITOR: DOSAGE SHALL BE PER MANUFACTURER'S RECOMMENDATIONS.

MARK NO.	NO. REQD.	WEIGHT
01	2	63,541 LBS.
02	4	62,595 LBS.



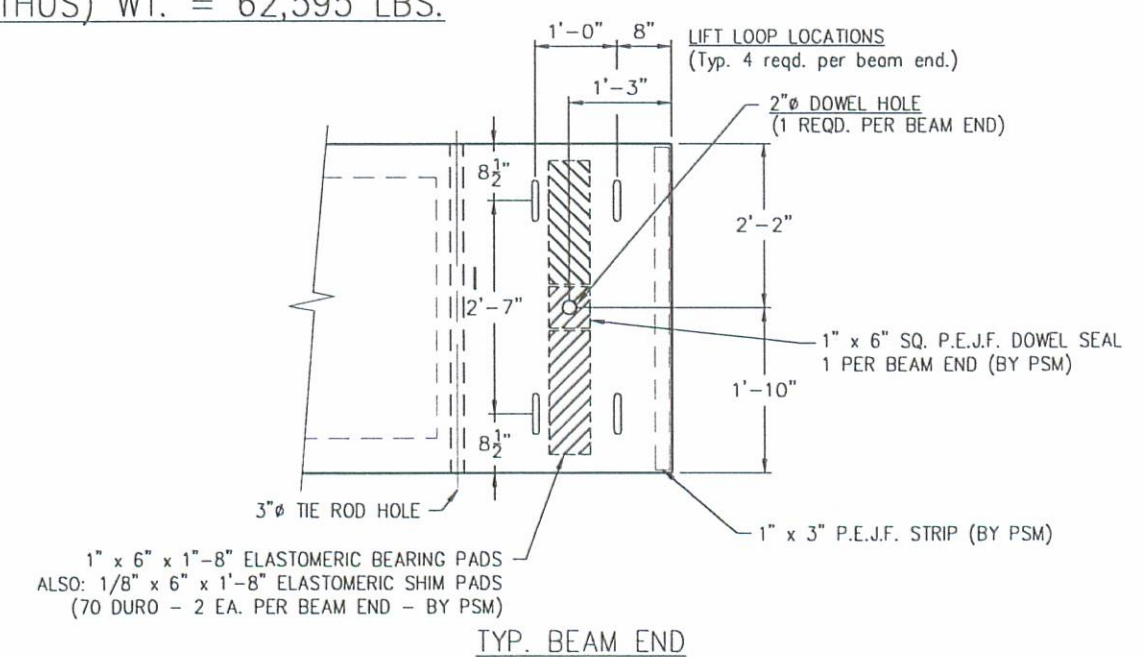
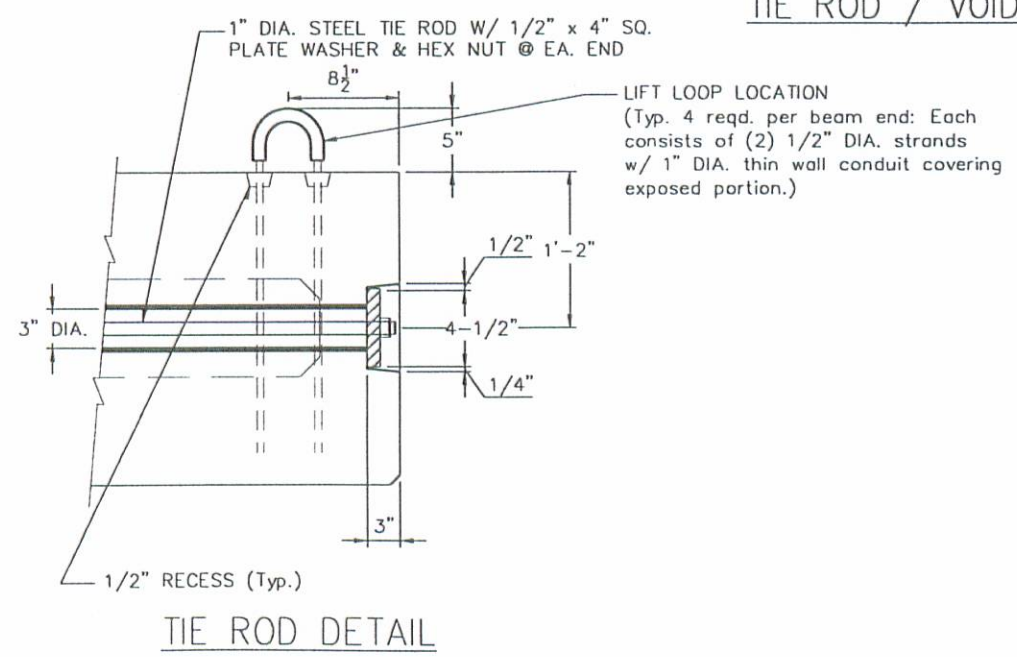
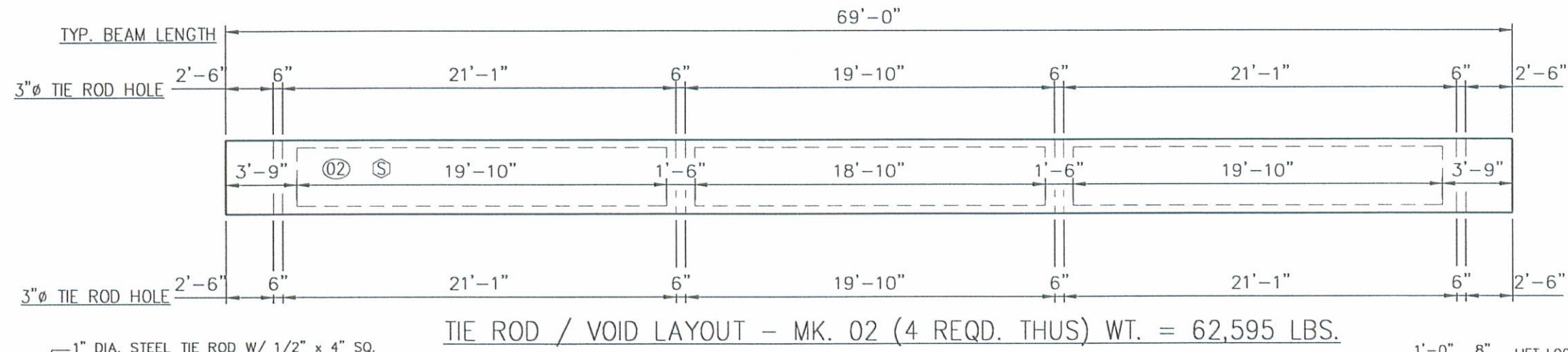
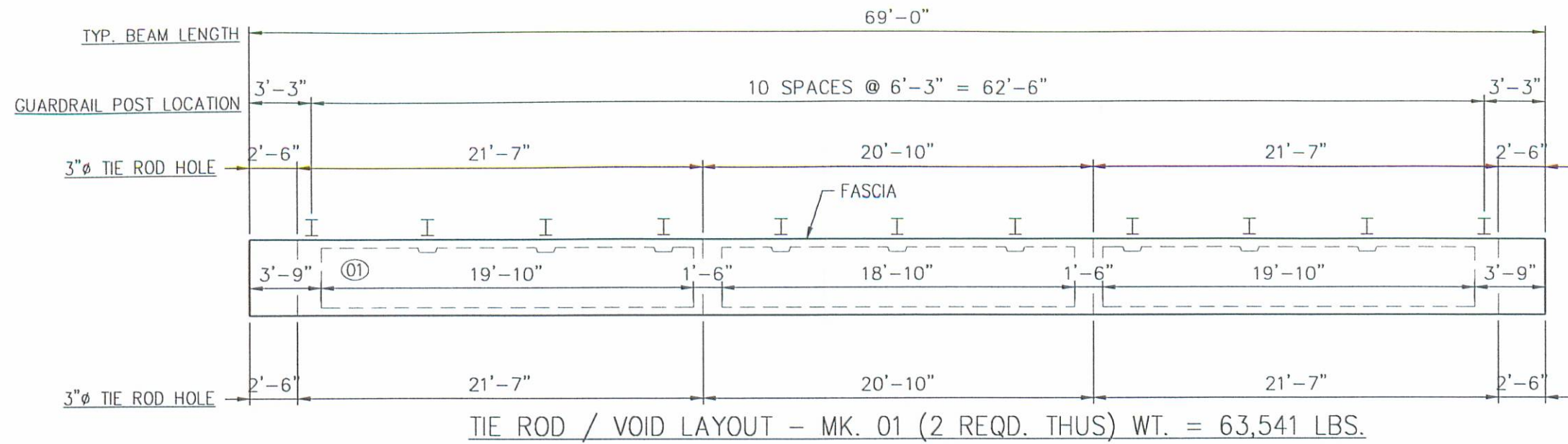
NOTE:
 P.S.M. SHALL FURNISH, INCIDENTAL TO BEAMS:

- (8) 1"Ø x 12' TIE ROD
- (4) 1"Ø x 8' TIE ROD
- (24) 1/2" x 4" SQ. PLATE WASHERS
- (24) 1" Ø HEX NUTS
- (12) 1" DIA. x 3'-9" DOWEL RODS (SMOOTH-GALV.)
- (12) 1" x 6" SQ. P.E.J.F. DOWEL SEALS
- (24) 1" x 6" x 1'-8" ELASTOMERIC BEARING PADS (70 DURO)
- (24) 1/8" x 6" x 1'-8" SHIM PADS
- (48 LF) 1" x 3" CORK STRIP
- (70') 7 STRANDS JUTE + INTERPLAST-N
- (22) ODOT TYPE 2 POSTS INSTALLED, USING:
- (88) 1 1/4"Ø x 8" STUDS (ALL THREAD)
- (176) 1 1/4"Ø HEX NUTS
- (176) WASHERS
- (150') STD. DEEP BEAM GUARDRAIL
- (150') TUBULAR BACKUP

DATE	BY	REVISION		PRODUCING PLANT: ROUTE 8 P.O. BOX 211 MELBOURNE, KENTUCKY 41059 PH: (606) 441-0068 FAX: (606) 441-7985	AFFILIATES: 7605 SW WINCHESTER RD. P.O. BOX 111 DECATUR, INDIANA 46733-0111 PH: (219) 724-7117 FAX: (219) 724-3345	HALCY ROAD P.O. BOX 55425 LEANINGTON, KENTUCKY 40555-5435 PH: (502) 233-3451 FAX: (502) 233-0147	CONTRACTOR COUNTY FORCES	PROJECT LOGAN COUNTY, OHIO BRIDGE No. 157 - 1.61	SHOP NO. M0236
				DRAWN WAH 7/17/00	DATE 7/17/00	CHECKED DATE	APPROVED DATE	SHEET NO. 1 of 3	

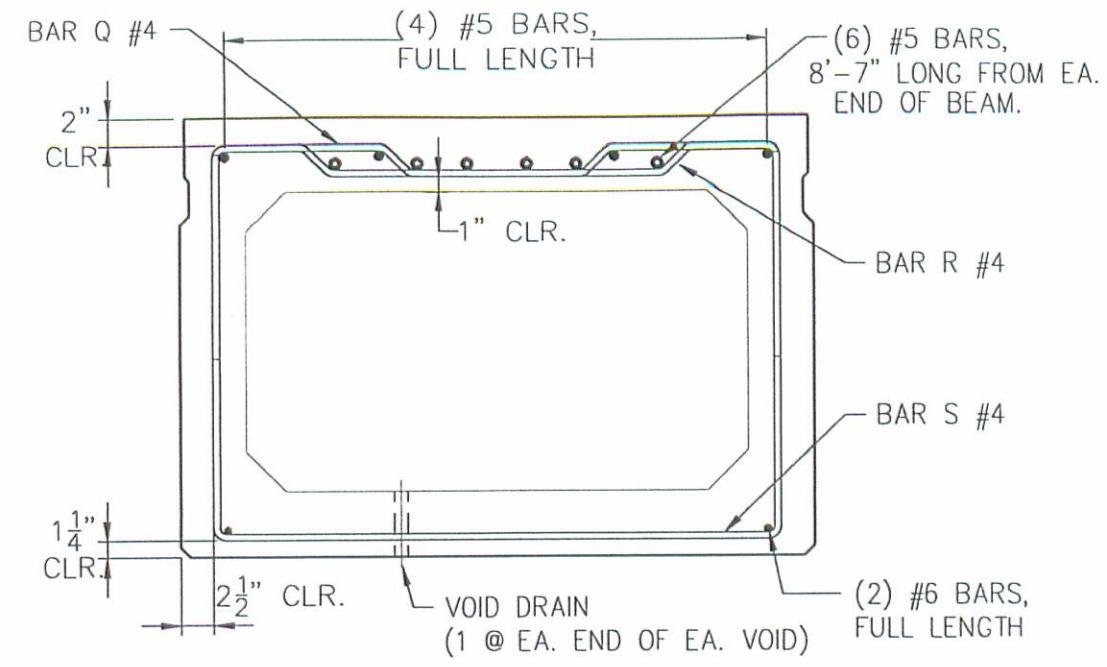
(859)

INNER-PLANT USE			
DATE	NO. of COPIES	DWG. STATUS	

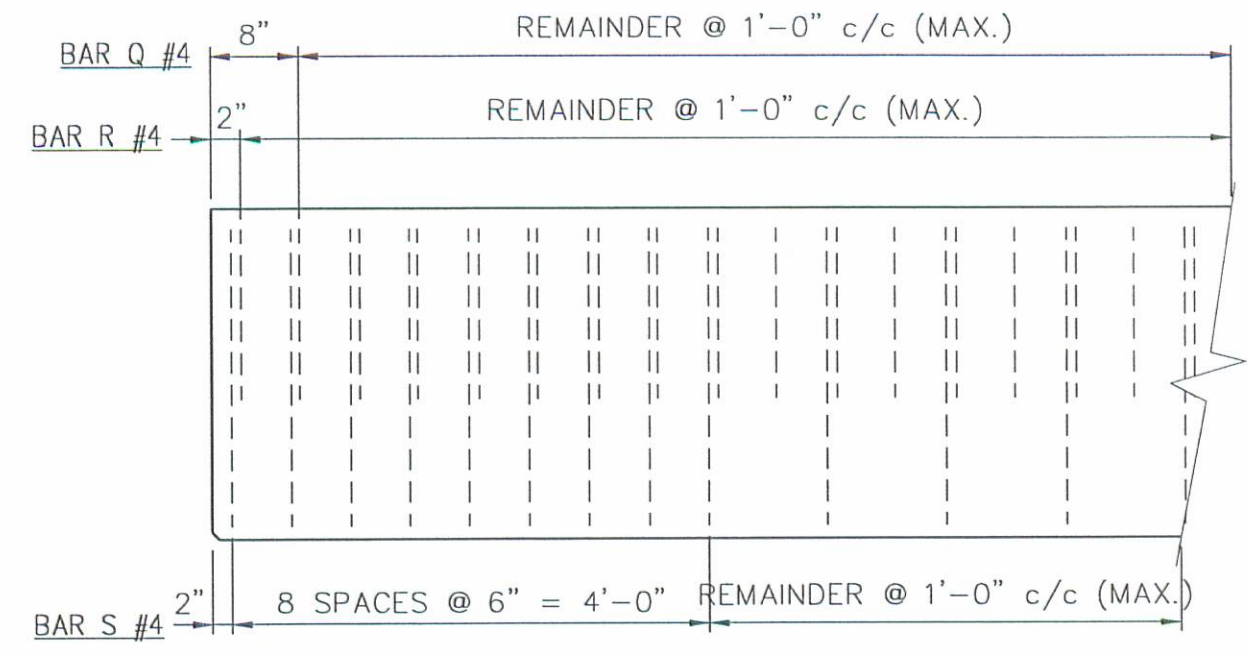


DATE	BY	REVISION	PRODUCING PLANT:	AFFILIATES:	CONTRACTOR:	PROJECT:	SHOP NO.	
			ROUTE B P.O. BOX 211 MELBOURNE, KENTUCKY 41059 PH: (606) 441-0068 FAX: (606) 441-7986	7655 NW WINCHESTER RD. P.O. BOX 111 DECATUR, INDIANA 46733-0111 PH: (219) 724-7117 FAX: (219) 724-2349	HALEY ROAD P.O. BOX 55436 LEXINGTON, KENTUCKY 40555-5436 PH: (502) 299-0481 FAX: (502) 299-0147	COUNTY FORCES	LOGAN COUNTY, OHIO BRIDGE No. 157 - 1.61	M0236 SHEET NO. 2 of 3
					DRAWN DATE WAH 7/17/00	CHECKED DATE	APPROVED DATE	

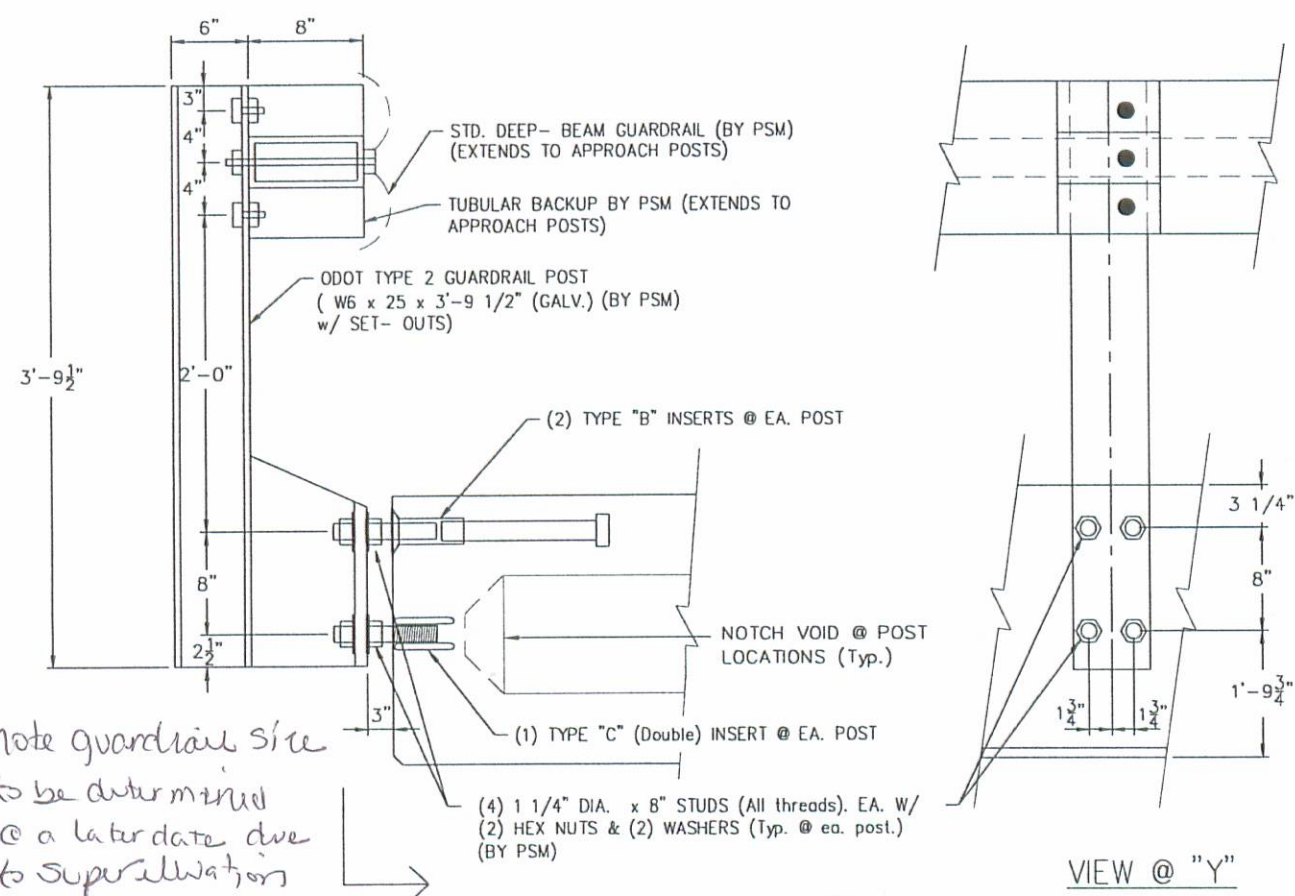
INNER-PLANT USE			
DATE	NO. of COPIES	DWG. STATUS	



STEEL SECTION

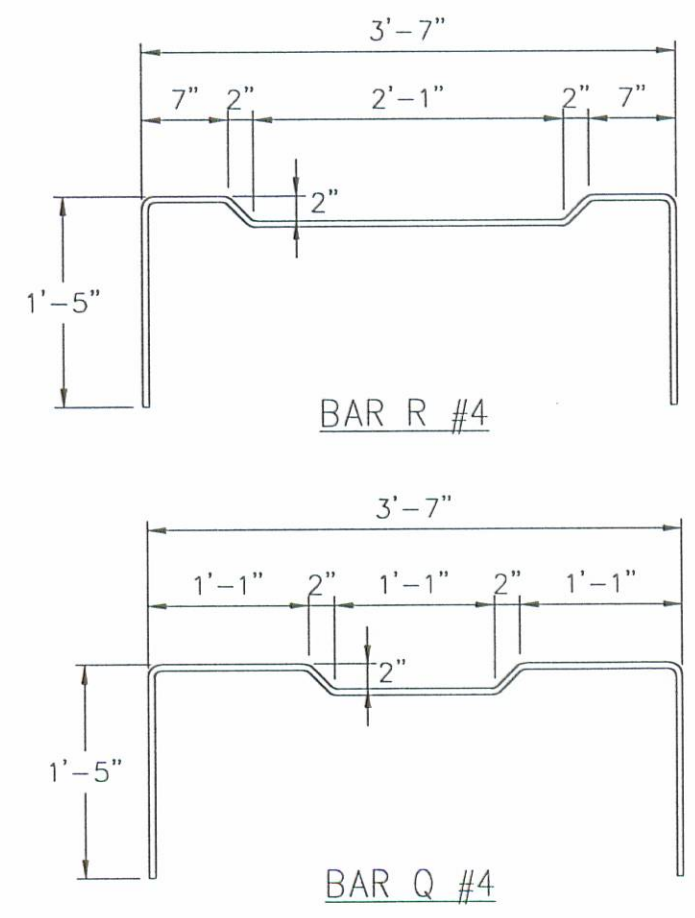


PARTIAL SIDE ELEVATION
(Showing stirrup spacing)

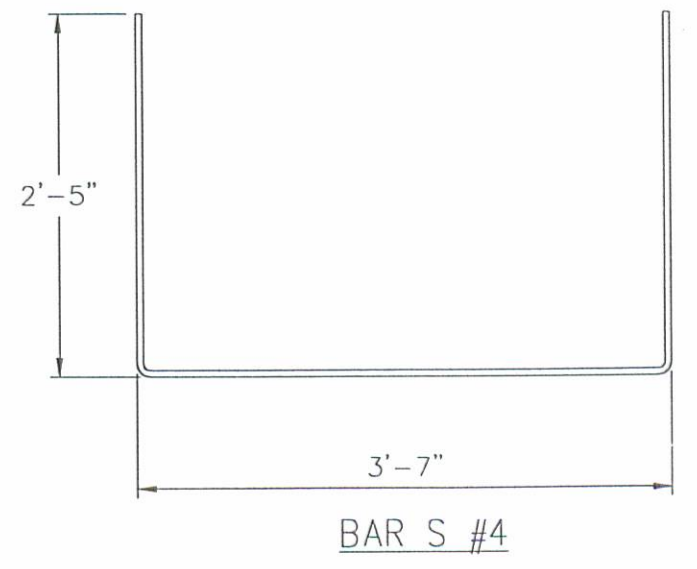


GUARDRAIL DETAIL

Note guardrail size to be determined @ a later date due to super elevations per Gade McDonald



STIRRUP QUANTITIES PER BEAM		
MARK	BAR SIZE	NO. REQD.
BAR "S"	#4	78
BAR "R"	#4	70
BAR "Q"	#4	69



DATE	BY	REVISION



PRODUCING PLANT:
ROUTE B
P.O. BOX 211
MELBOURNE, KENTUCKY
41059
PH: (606) 441-0068
FAX: (606) 441-7986

AFFILIATES:
7455 NW WINCHESTER RD.
P.O. BOX 111
DECATUR, INDIANA
46733-0111
PH: (219) 724-7117
FAX: (219) 724-5349

HALEY ROAD
P.O. BOX 15436
LEXINGTON, KENTUCKY
40555-0436
PH: (606) 259-0461
FAX: (606) 299-0147

CONTRACTOR			
COUNTY FORCES			
DRAWN	DATE	CHECKED	DATE
WAH	7/17/00		
APPROVED	DATE		

PROJECT
LOGAN COUNTY, OHIO
BRIDGE No. 157 - 1.61

SHOP NO.
MO236
SHEET NO.
3 of 3