

BEAM MARK	NO. REQD.	WEIGHT
01	1	61,795 LBS.
02	4	62,371 LBS.
03*	1	61,795 LBS.

* IDENTICAL TO MK.01 BY 180° ROTATION

* IDENTICAL TO MK.01 BY 180° ROTATION

BRIDGE PLAN
S = BEAM IS SYMMETRICAL

**** GUARDRAIL NOTE:**
 (20) ODOT TYPE 2 POSTS BY PSI (SHIP INSTALLED ON BMS)
 (8) ADDITIONAL W6 x 15 x 6'-9" APPROACH POSTS BY PSI (SHIP LOOSE)
 (164 LF) STD. DEEP BEAM GUARDRAIL & (164 LF) TUBULAR BACK-UP BY PSI (SHIP RAIL & TUBULAR BACK-UP LOOSE)

GENERAL NOTES:

- 1) MANUFACTURE BEAMS IN ACCORDANCE WITH THE ODOT SPECIFICATIONS.
- 2) MINIMUM CONCRETE STRENGTH @ RELEASE OF STRAND = 4,000 P.S.I.
MINIMUM CONCRETE STRENGTH @ 28 DAYS = 5,500 P.S.I.
- 3) STRAND SHALL BE (7) WIRE, UNCOATED, LOW RELAXATION, 1/2" "REGULAR" DIA. (As=0.153 SQ. IN.), 270 K.S.I. ULTIMATE STRENGTH.
- 4) PULL EACH STRAND TO 30,982 LBS.
- 5) STEEL GRADE 60, A.S.T.M. A-615.
- 6) BROOM FINISH TOPS OF BEAMS.
- 7) HS20-44 & THE ALTERNATE MILITARY LOADING.
- 8) CONCRETE MIX SHALL CONTAIN RUSTEC'S "RCI" CORROSION INHIBITOR; DOSAGE SHALL BE 4 GALLONS PER CUBIC YARD OF CONCRETE.
- 9) ALL ANCHOR BOLTS, STUDS, INSERTS, TIE RODS, NUTS, & WASHERS SHALL BE GALVANIZED, PER ODOT SPECIFICATIONS.
- 10) KEYWAYS SHALL RECEIVE A MEDIUM SANDBLAST AT THE PLANT WITHIN FOUR DAYS PRIOR TO SHIPPING.

NOTE:
PSi SHALL FURNISH, INCIDENTAL TO BEAMS:

- (20) 1"φ x 8" TIE RODS
- (40) 1/2" x 4" SQ. PLATE WASHERS
- (40) 1"φ HEX NUTS
- (12) 1"φ x 3'-9" DOWEL RODS (SMOOTH, A-311)
- (12) 1" x 6" SQ. PEJF GROUT RETAINERS
- (24) 1" x 6" x 1'-6" ELASTOMERIC BEARING PADS ("PLAIN")
- (24) 1/8" x 6" x 1'-6" ELASTOMERIC SHIM PADS
- (20) ODOT TYPE 2 GUARDRAIL POSTS, INSTALLED ON BMS. USING:
 - (80) 1 1/4"φ x 8" STUDS (ALL THRD)
 - (160) WASHERS
 - (160) 1 1/4"φ HEX NUTS
- (8) W6 X 15 X 6'-9" GUARDRAIL POSTS (SHIP LOOSE)
- (55 LF) 7 STRAND JUTE
- INTRAPLAST - N GROUT ADDITIVE

APPROVED
BY LOGAN CO. ENGINEER
Kristina J. Knight PE 4/27/2004

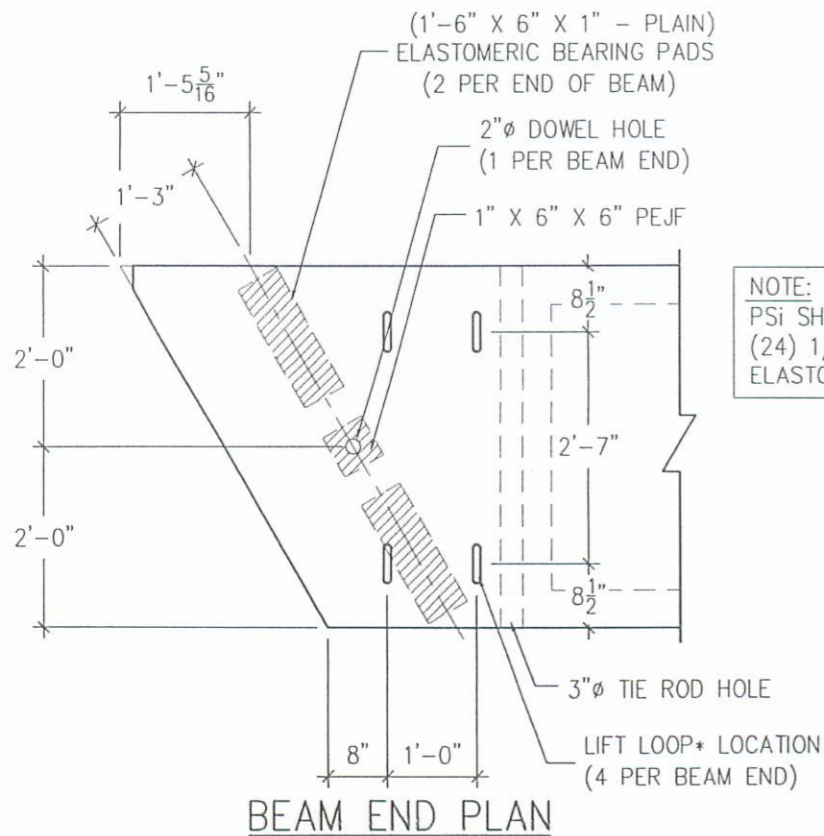
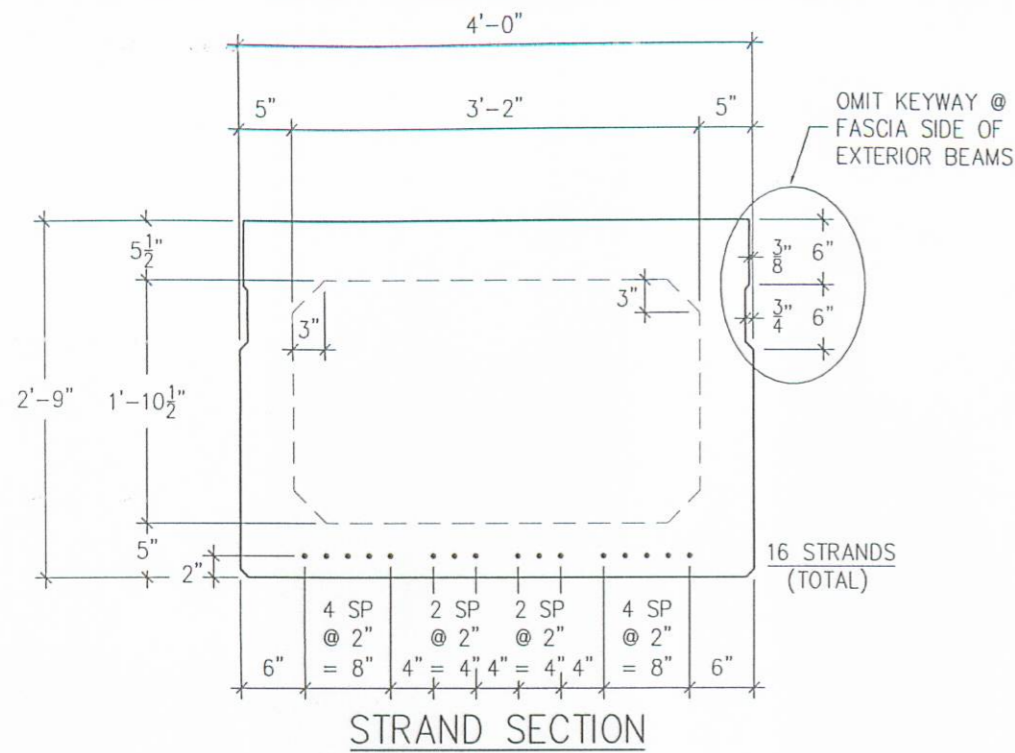
PROJECT OVERVIEW		
LOGAN COUNTY, OHIO BRIDGE NO. 157-0.91 T 157 / DARBY CREEK		
CONTRACTOR: COUNTY FORCES		
PSi Prestress Services	PRODUCING PLANT: State Route 8 MELBOURNE, KY 41059 PH: (859) 441-0068 FAX: (859) 441-7986	DRAFTING OFFICE: P.O. BOX 211 MELBOURNE, KY 41059 PH: (859) 441-0068 FAX: (859) 441-7986
	DATE: 3-18-04 DRAWN BY: EDD CHECKED: GDA	REVISIONS: △ EDD 3-24-04 NOTE #8 CORRECTED △ GDA 4-13-04 PER ENGINEER'S SPECS.
CODE: B33480	SHEET: 1 of 4	JOB NO: M4113

M4113LOOH.dwg-1 OF 4
3:47 PM
04-13-04

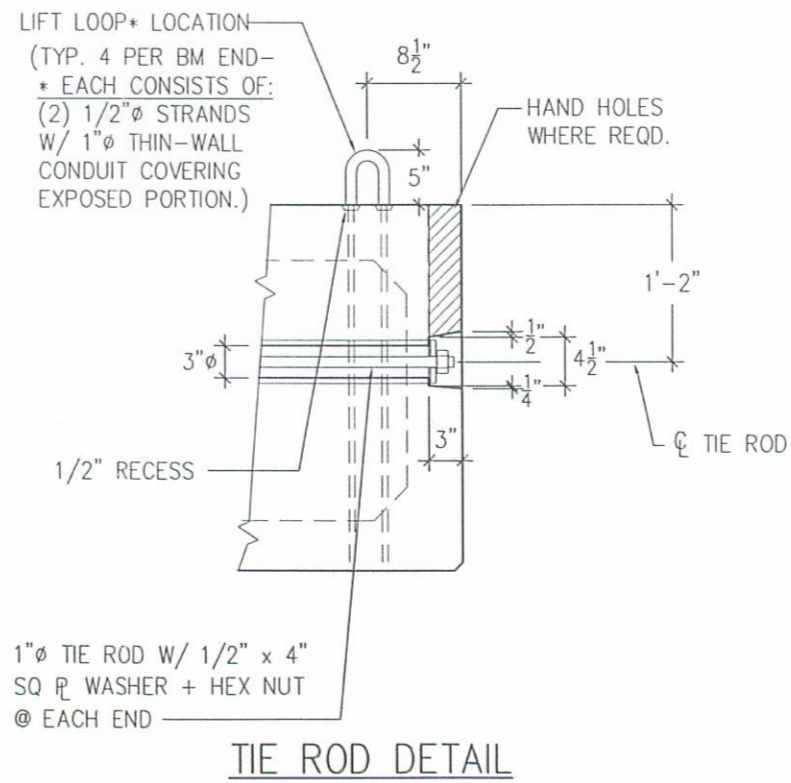
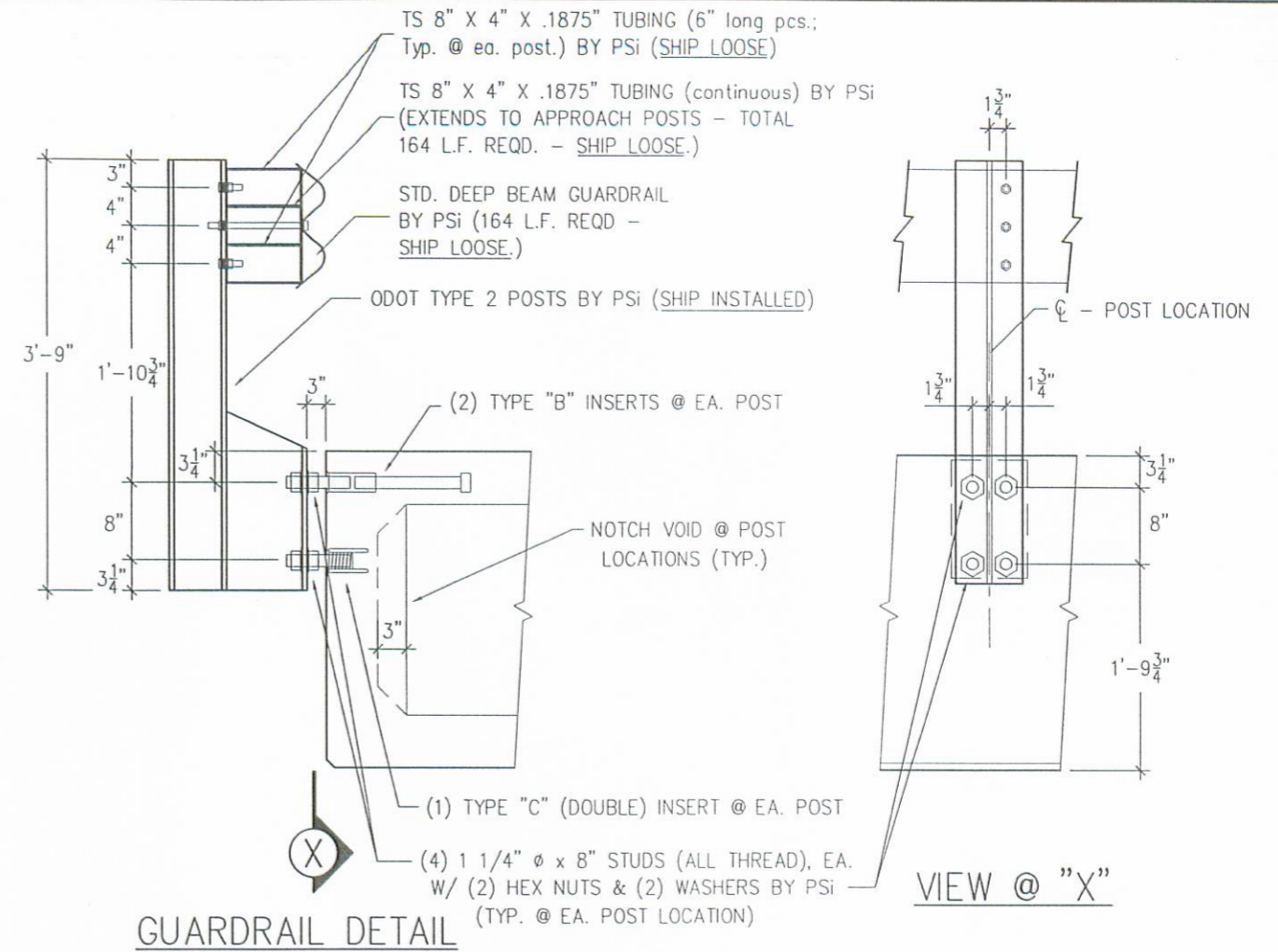
M4113.LOOH.dwg-2 OF 4

3:47 PM

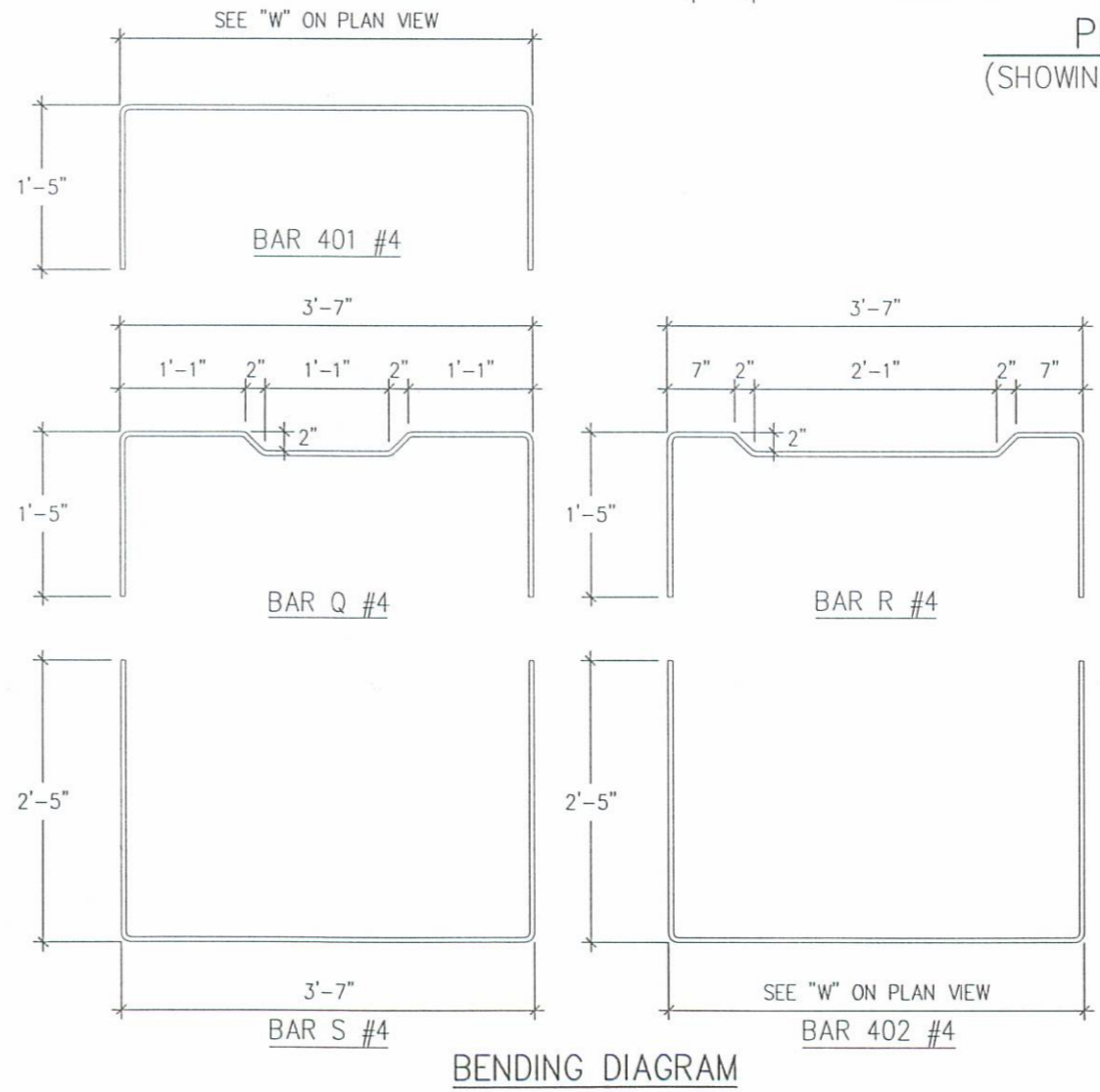
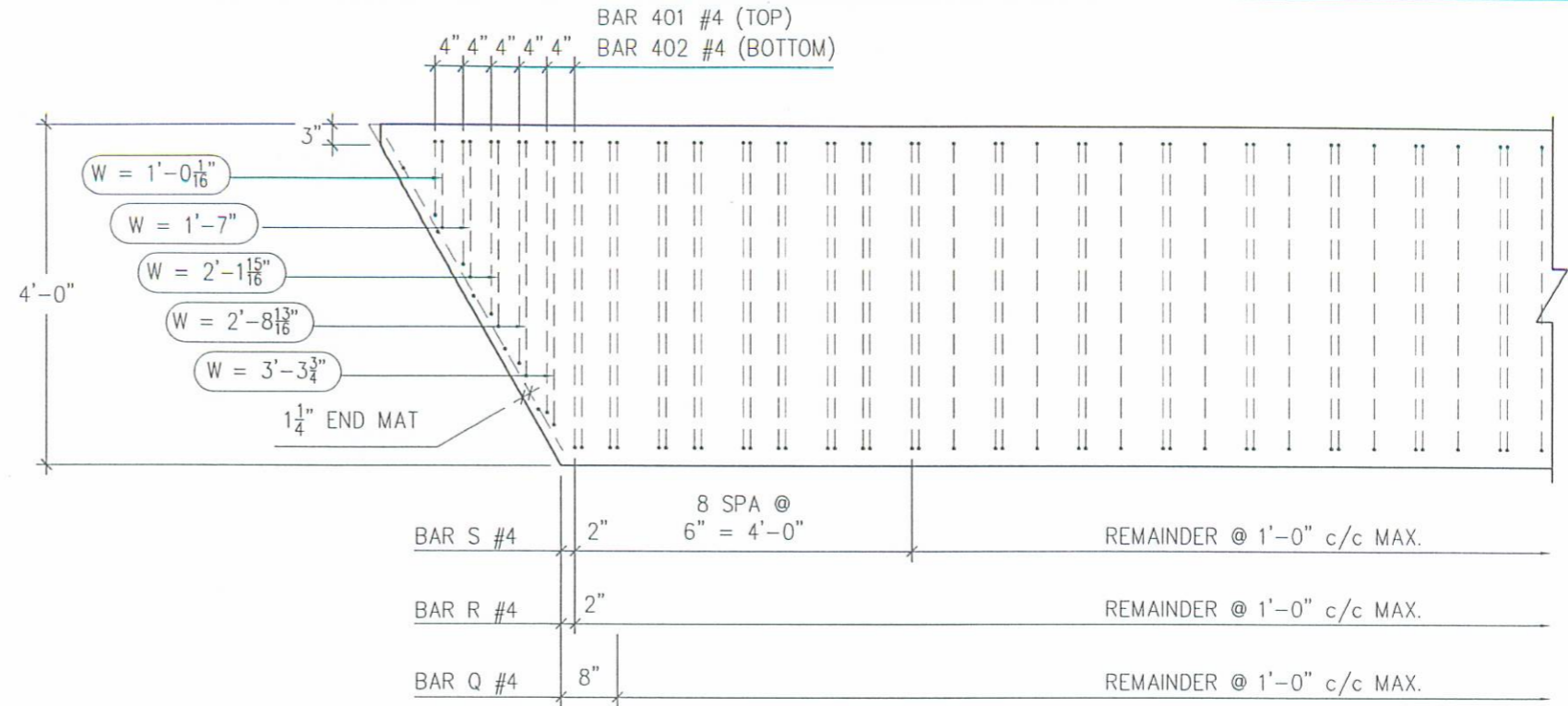
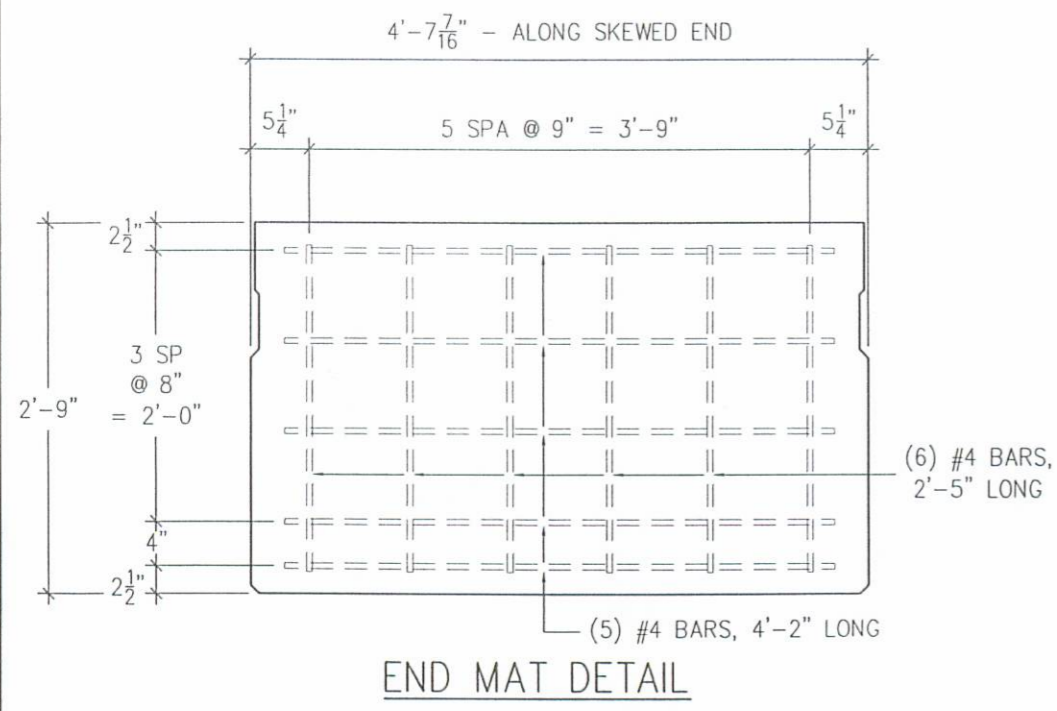
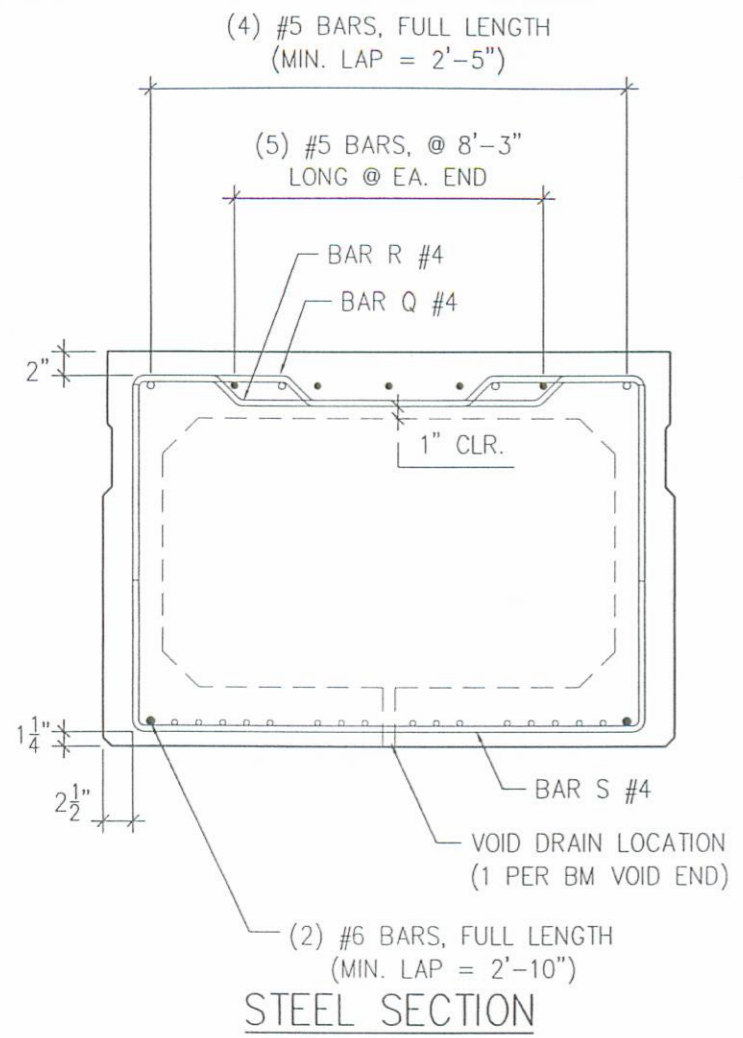
04-13-04



NOTE:
PSi SHALL ALSO FURNISH (24) 1/8" X 6" X 1'-6" ELASTOMERIC SHIM PADS



STRAND & DETAILS			
LOGAN COUNTY, OHIO BRIDGE NO. 157-0.91 T 157 / DARBY CREEK			
CONTRACTOR: COUNTY FORCES			
PSi Progress Services	PRODUCING PLANT: State Route 8 MELBOURNE, KY 41059 PH: (859) 441-0068 FAX: (859) 441-7986	DRAFTING OFFICE: P.O. BOX 211 MELBOURNE, KY 41059 PH: (859) 441-0068 FAX: (859) 441-7986	
	DATE: 3-18-04	DRAWN BY: EDD	CHECKED: GDA
REVISIONS	△		
	△		
	△		
CODE: B33480			SHEET: 2 of 4
			JOB NO: M4113



MARK	BAR SIZE	NO.* REQD.
BAR Q (TOP)	#4	61
BAR R (TOP)	#4	62
BAR S (BOTTOM)	#4	70
BAR 401	#4	10
BAR 402	#4	10

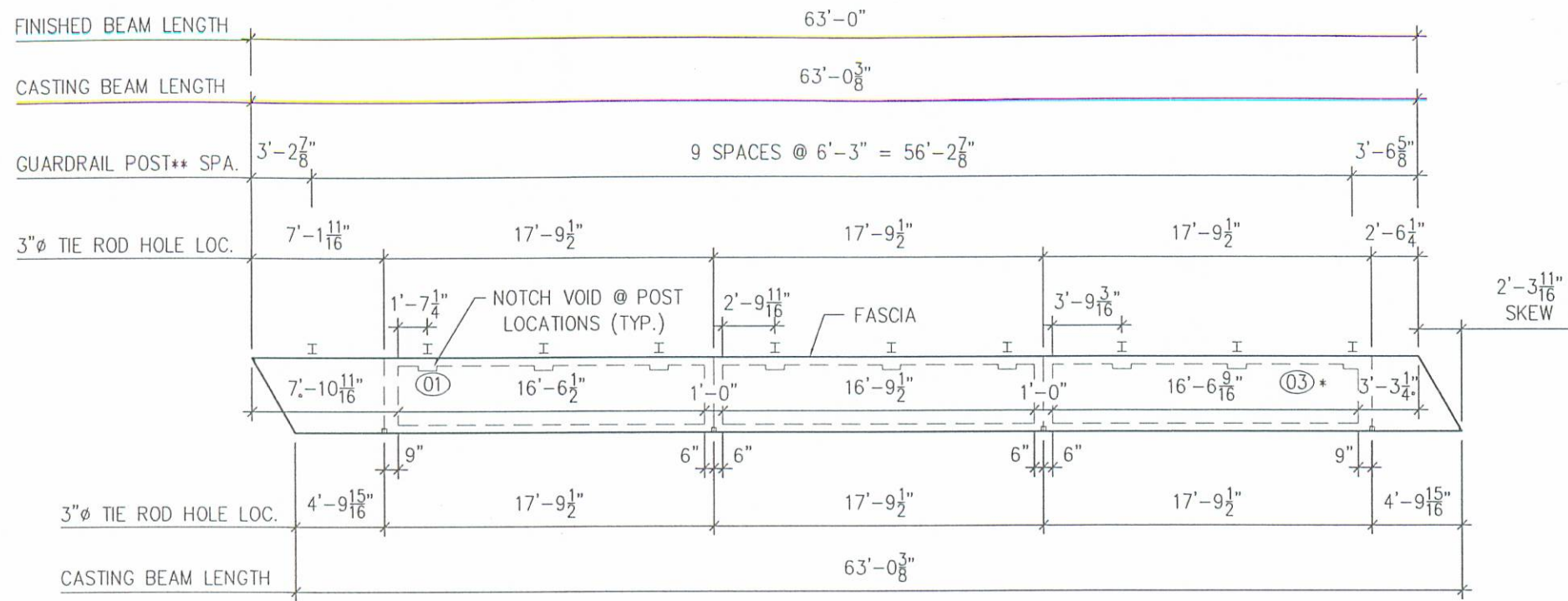
* PER BEAM

STEEL DETAILS		
LOGAN COUNTY, OHIO BRIDGE NO. 157-0.91 T 157 / DARBY CREEK		
CONTRACTOR: COUNTY FORCES		
PSi Prestress Services	PRODUCING PLANT: State Route 8 MELBOURNE, KY 41059 PH: (859) 441-0068 FAX: (859) 441-7986	DRAFTING OFFICE: P.O. BOX 211 MELBOURNE, KY 41059 PH: (859) 441-0068 FAX: (859) 441-7986
	DATE: 3-18-04	DRAWN BY: EDD
REVISIONS		
CODE: B33480	SHEET: 3 of 4	JOB NO: M4113

M4113.LOOH.dwg-4 OF 4

3:47 PM

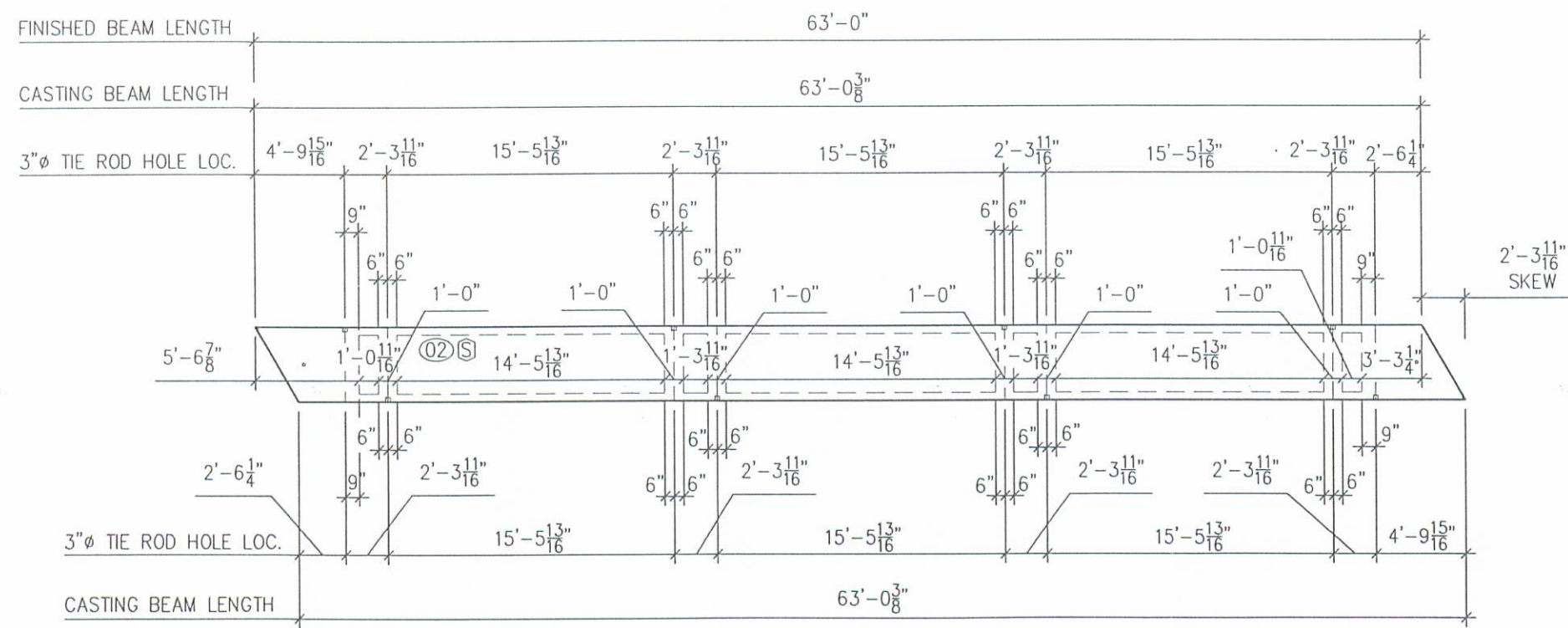
04-13-04



TIE ROD / VOID LAYOUT MKS. 01 & 03 (1 REQD. EA. THUS) SHIPPING WT. = 61,795 LBS.

* IDENTICAL TO MK. 01 BY 180° ROTATION

**** GUARDRAIL NOTE:**
 (20) ODOT TYPE 2 POSTS BY PSI (SHIP INSTALLED ON BMS)
 (8) ADDITIONAL W6 x 15 x 6'-9" APPROACH POSTS BY PSI (SHIP LOOSE)
 (164 LF) STD. DEEP BEAM GUARDRAIL & (164 LF) TUBULAR BACK-UP BY PSI (SHIP RAIL & TUBULAR BACK-UP LOOSE)



TIE ROD / VOID LAYOUT MK. 02 (4 REQD. THUS) SHIPPING WT. = 62,371 LBS.

Ⓢ = BEAM IS SYMMETRICAL

BEAM LAYOUTS			
LOGAN COUNTY, OHIO BRIDGE NO. 157-0.91 T 157 / DARBY CREEK			
CONTRACTOR: COUNTY FORCES			
	PRODUCING PLANT: State Route 8 MELBOURNE, KY 41059 PH: (859) 441-0068 FAX: (859) 441-7986	DRAFTING OFFICE: P.O. BOX 211 MELBOURNE, KY 41059 PH: (859) 441-0068 FAX: (859) 441-7986	
	DATE: 3-18-04	DRAWN BY: EDD	CHECKED: GDA
REVISIONS	△ GDA 4-13-04	PER ENGINEER'S SPECS.	
CODE: B33480	SHEET: 4 of 4	JOB NO: M4113	