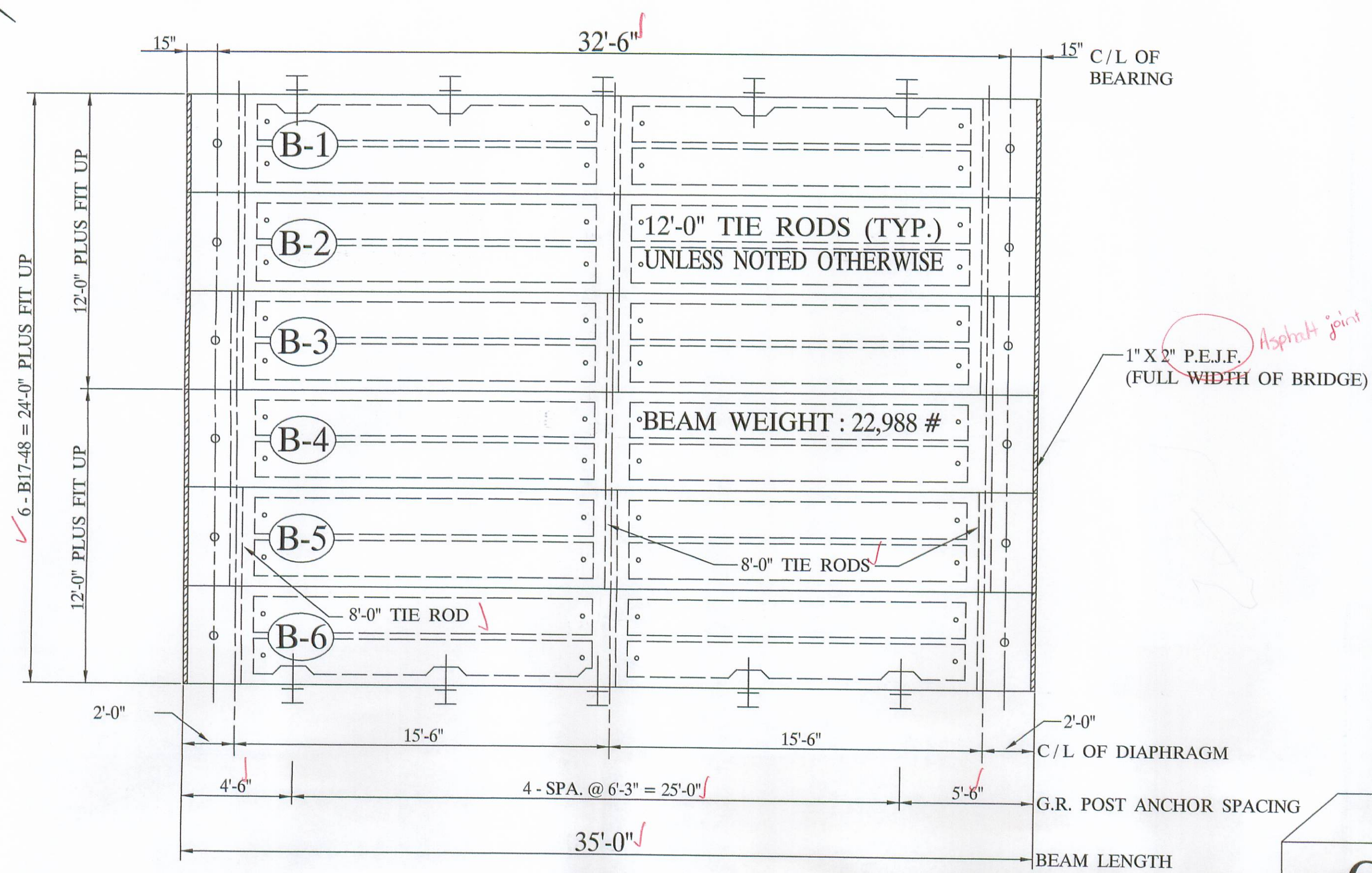
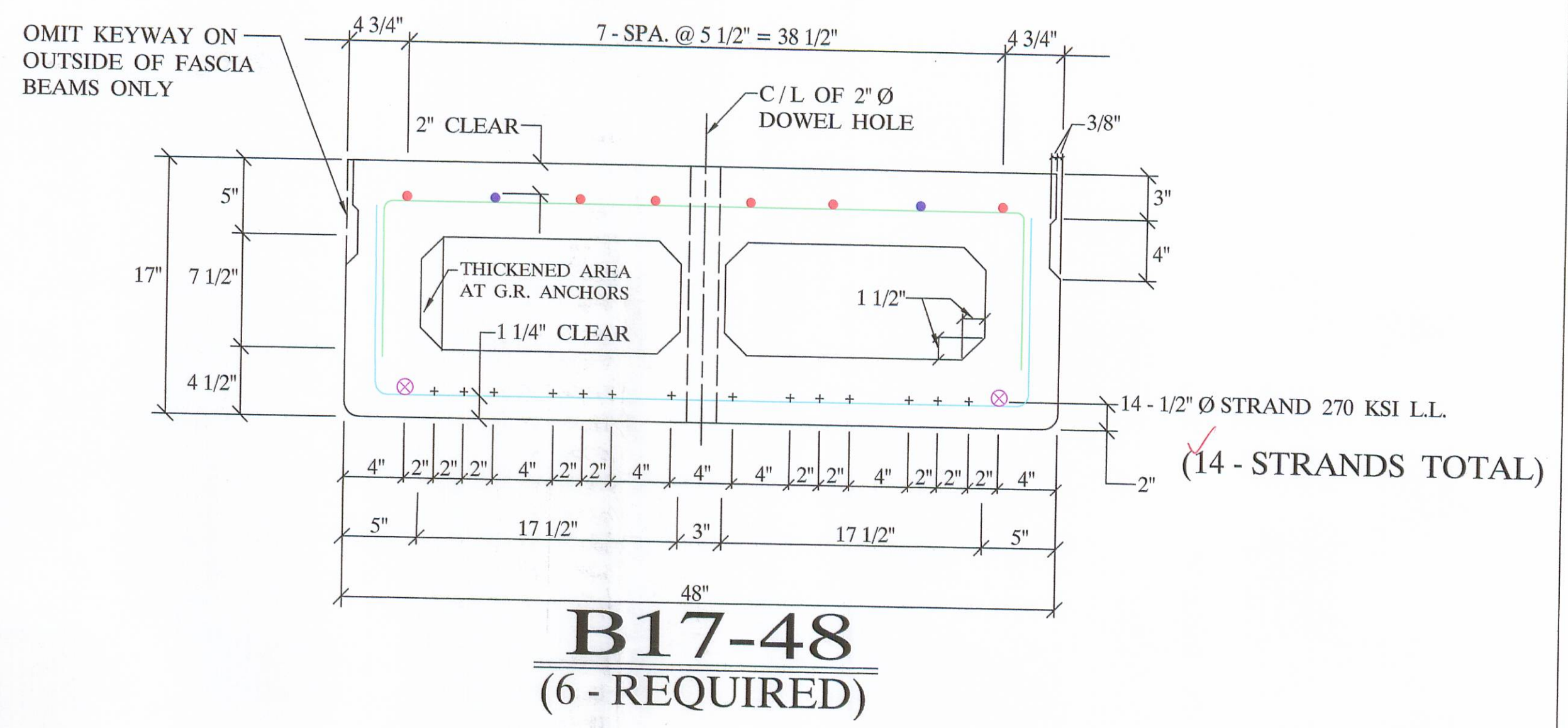


PLEASE MARK SPO. # ON TOP OF ALL BEAMS ALONG WITH COUNTY NAME



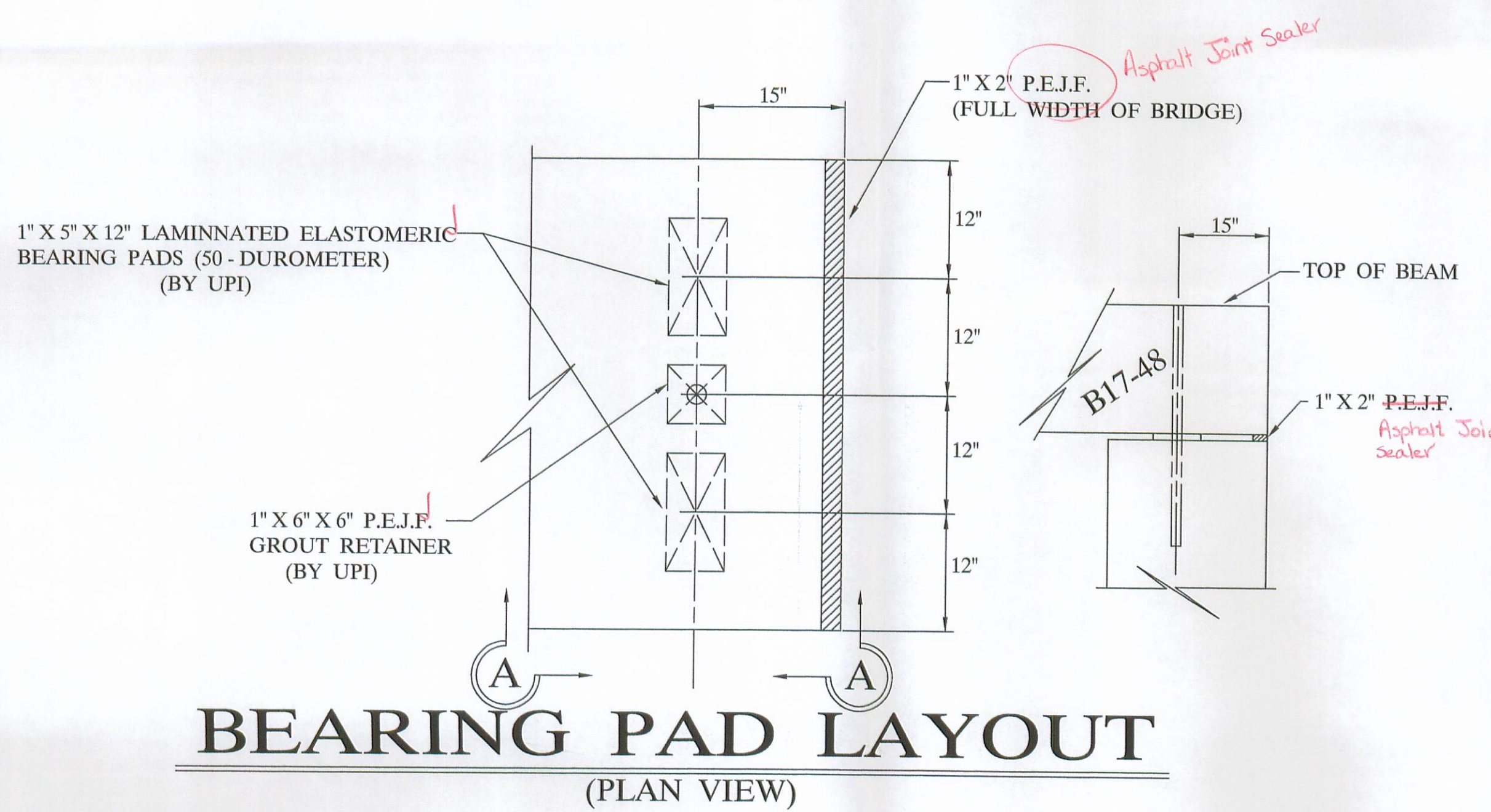
DECK PLAN



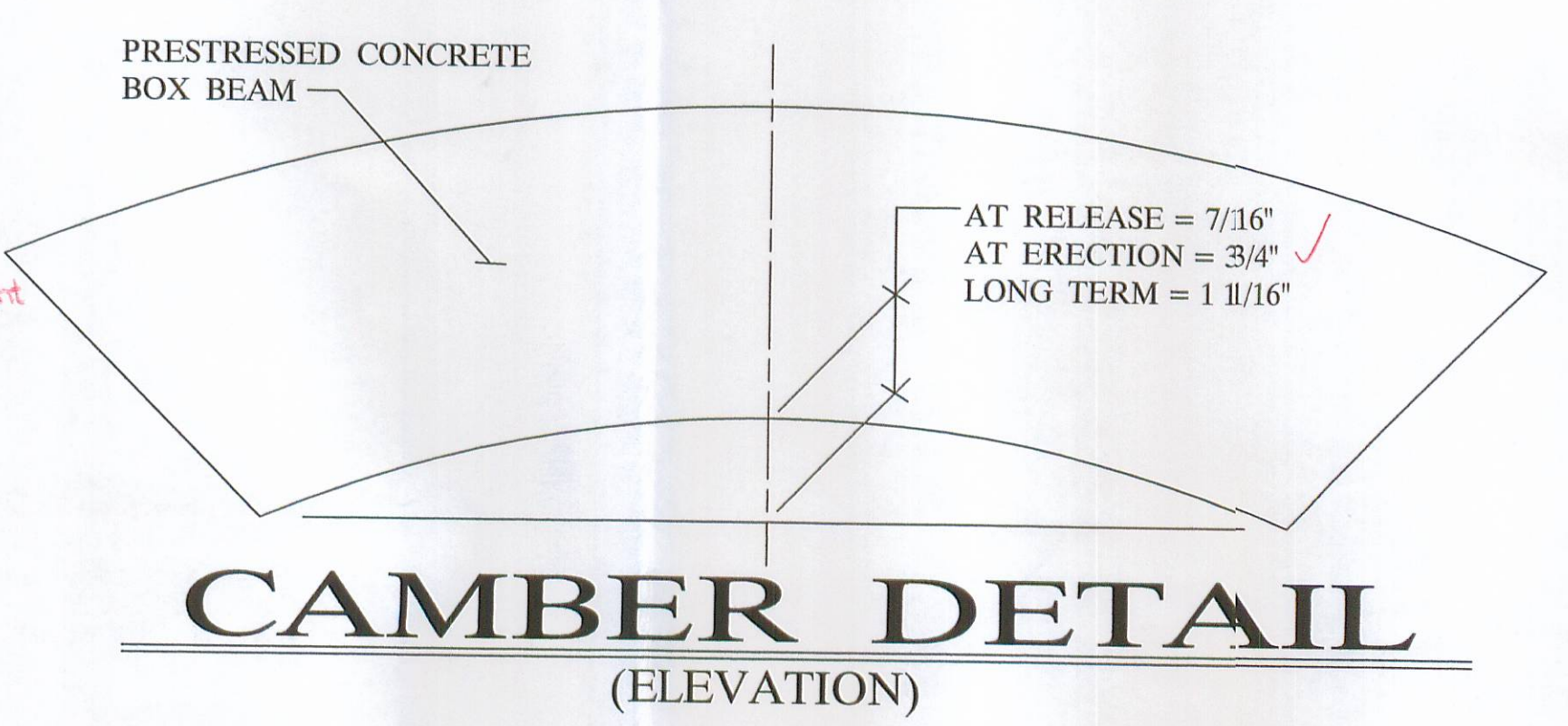
- ✓ 6 - #4 BARS FULL LENGTH RUN (TOP)
- ✓ 2 - #4 ADDITIONAL BARS 7'-3" LONG AT EACH END OF BEAM
- ✓ 2 - #5 BARS FULL LENGTH RUN (BOTTOM)

QUALITY CONTROL NOTE :

- STRAND AREA IS .153 SQ. IN. ✓
- STRAND IS LOW LAX. ✓
- INITIAL LOAD IS 30,982 # / STRAND. ✓
- REBAR IS ALL GRADE - 60. ✓
- STIRRUPS UNDER STRAND ✓
- CONCRETE STRENGTHS: 5500 PSI AT 28 DAYS ✓
4000 PSI AT RELEASE ✓
- ODOT 2005 SPECIFICATION. ✓



BEARING PAD LAYOUT
(PLAN VIEW)

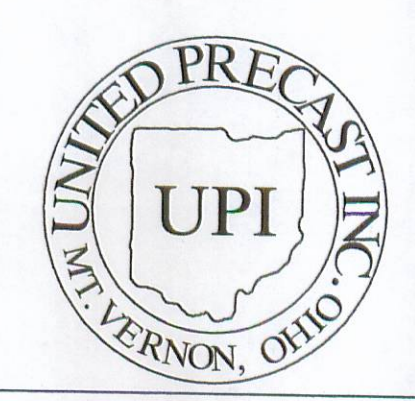


CAMBER DETAIL
(ELEVATION)

BILL OF MATERIALS

NO	ITEM	QTY / BEAM	NOTES	TOTAL
1	BEAM WEIGHT		22,988 #	
2	CONCRETE	5.5 CY.		33 CY.
3	CALCIUM NITRITE (D.C.I.)	22 GAL.	(4 - GAL. / CY.)	132 GAL.
4	STRAND		1/2" Ø STRAND 270 KSI L.L.	3,640 L.F.
5	RE - STEEL		GRADE - 60	3,444 #
6	VOID		7 1/2" X 17 1/2"	336 L.F.
7	VOID DRAINS		3/4" Ø NON FERROUS	48 EA.
8	TIE ROD	12'-0" 8'-0"	1" Ø STEEL ROD	6 EA.
9	TIE ROD SLEEVES		1" Ø STEEL ROD	3 EA.
10	TYPE - B - ANCHORS			96 L.F.
11	TYPE - C - ANCHORS			20 EA.
12	DOWELS & SLEEVES			10 EA.
13	WASSER		MC - TAR	12 EA.
14	SILANE			0.4 GAL.
15	JUTE			1.4 GAL.
16	BEARING PADS		1" X 5" X 12" , 1 - LAM.	175 L.F.
17	GUARDRAIL POST		TYPE - 2	24 EA.
18	OFF DECK POST		(SHIP LOOSE)	10 EA.
19	GUARDRAIL ELEMENT			8 EA.
20	TUBULAR BACK - UP			75 L.F.
21	P.E.J.F. Asphalt Joint Sealer			75 L.F.
22	NON-SHRINK GROUT ADDITIVE		1 CY. GROUT, BY OTHERS	8.5 S.F.
				9 LBS.

APPROVED As Noted
BY LOGAN CO. ENGINEER
2/23/2007

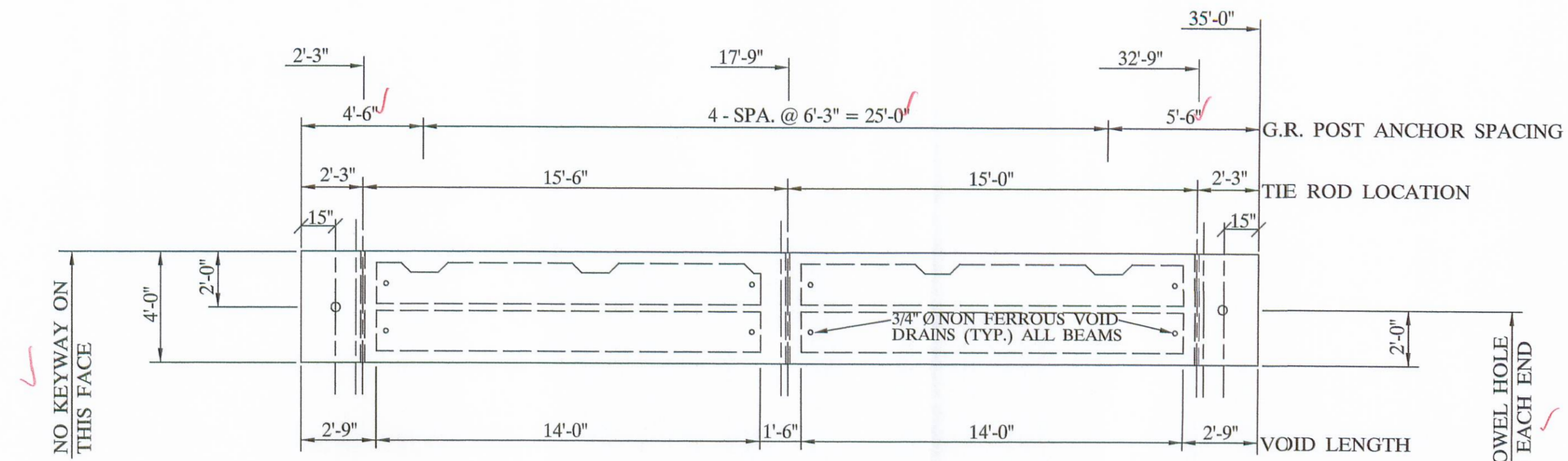


UNITED PRECAST INC.
ROUNDHOUSE LANE
MOUNT VERNON, OHIO 43050
PHONE : (740) 393-1121
FAX : (740) 393-0044

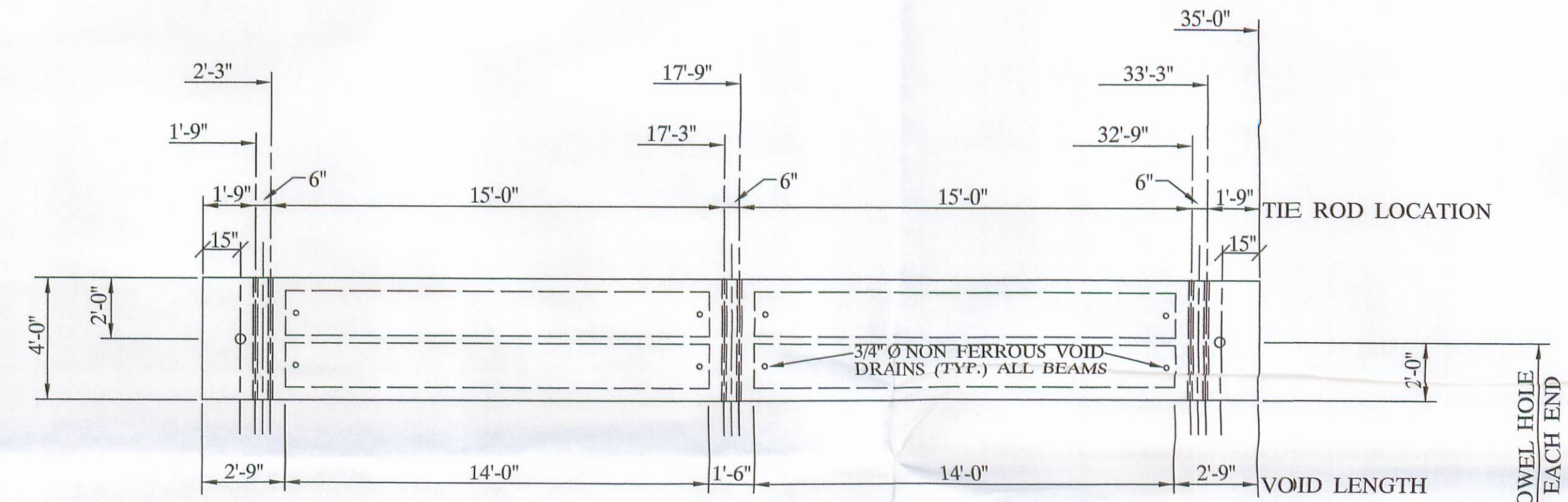
DESCRIPTION:	BOX BEAM DETAILS	SCALE:	DRAWN BY:
JOB NAME:	ITEM 515 BRIDGE NO. LOG - 157 - 0.60 LOGAN COUNTY		PHIL
DATE:	APPROVED BY:		REVISED:
JANUARY 2007	E.O.C. 2/10/07		
			DRAWING NO. 1 OF 4



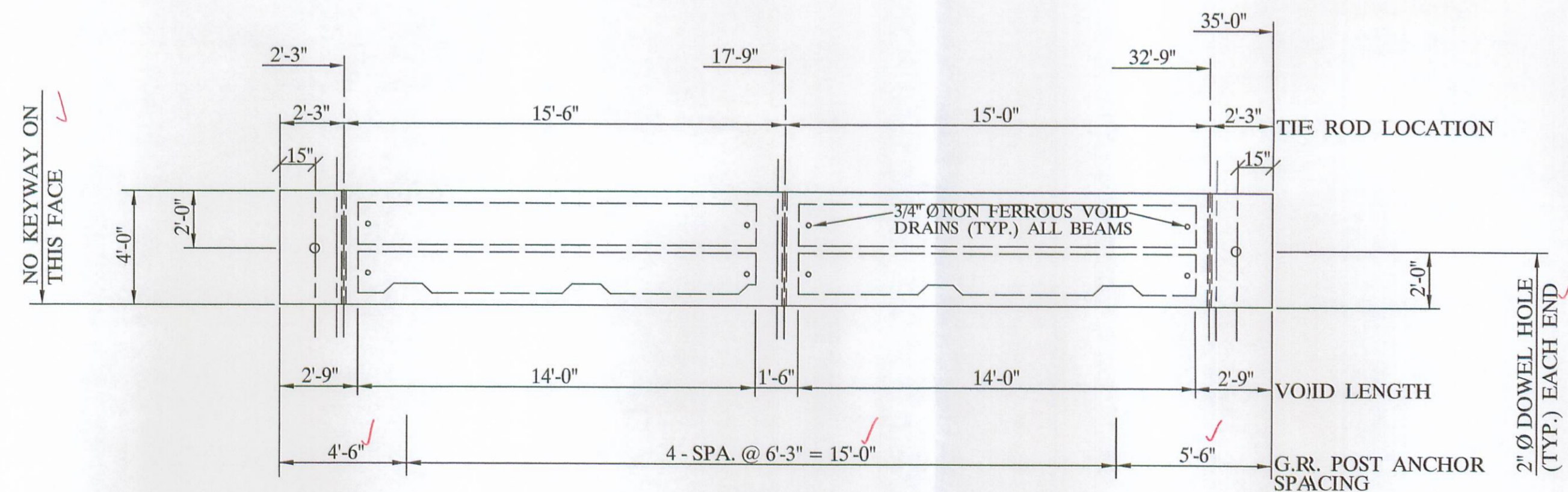
This drawing is the property of United Precast, Inc. or one of its affiliates and may contain information that is confidential or privileged. You are hereby notified that any disclosure, distribution or copying of the contents is prohibited without prior written consent from United Precast, Inc.



1 - BEAM NO. B-1
(PLAN VIEW)



4 - BEAM NO. B-2, B-3, B-4, & B-5
(PLAN VIEW)



1 - BEAM NO. B-6
(PLAN VIEW)



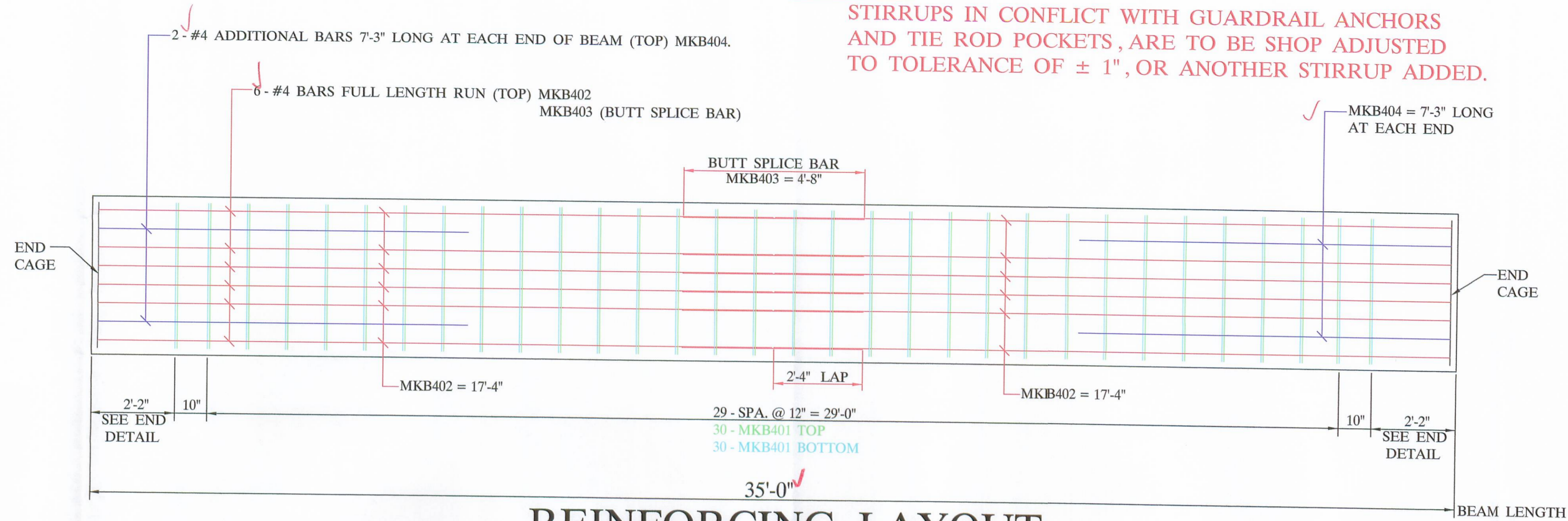
UNITED PRECAST INC.
 ROUNDHOUSE LANE
 MOUNT VERNON, OHIO 43050
 PHONE : (740) 393-1121
 FAX : (740) 393-0044

DESCRIPTION:	BOX BEAM DETAILS	SCALE:	DRAWN BY:
JOB NAME:	ITEM 515 BRIDGE NO. LOG - 157 - 0.60 LOGAN COUNTY PROJECT NO. T.R. 157		PHIL
DATE:	APPROVED BY:		REVISED:
JANUARY 2007	E.O.C. 2/10/07		DRAWING NO.
			2 OF 4

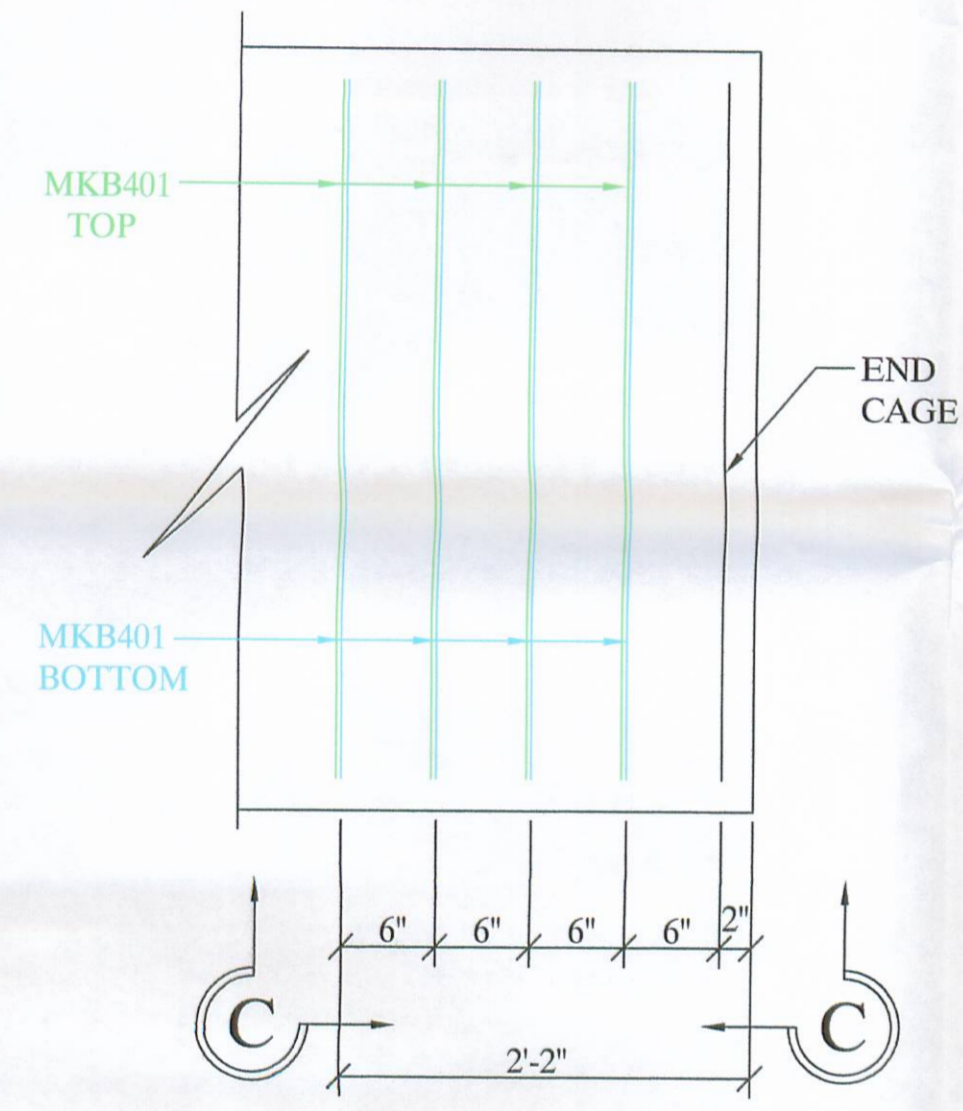
This drawing is the property of United Precast, Inc. or one of its affiliates and may contain information that is confidential or privileged. You are hereby notified that any disclosure, distribution or copying of the contents is prohibited without prior written consent from United Precast, Inc.

NOTE :

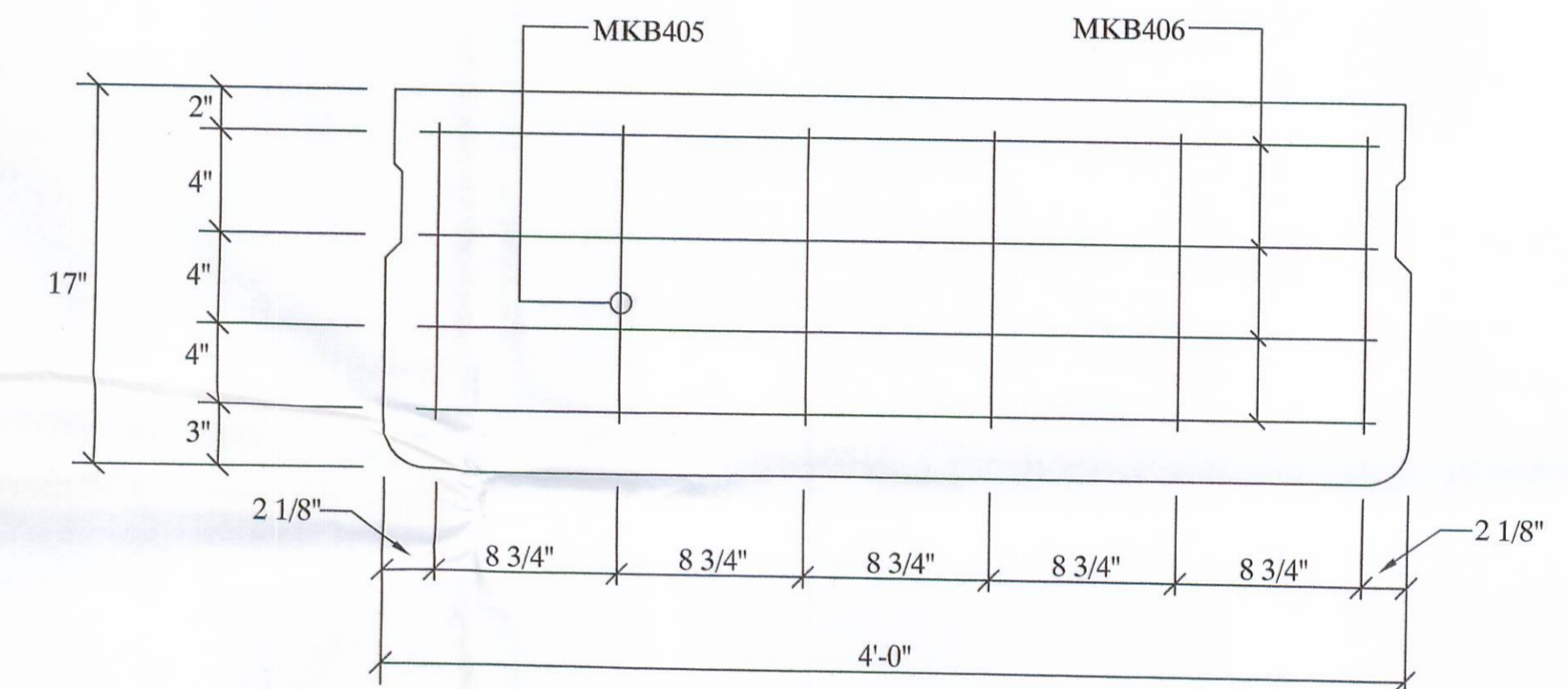
STIRRUPS IN CONFLICT WITH GUARDRAIL ANCHORS AND TIE ROD POCKETS, ARE TO BE SHOP ADJUSTED TO TOLERANCE OF ± 1", OR ANOTHER STIRRUP ADDED.



REINFORCING LAYOUT
(PLAN VIEW)

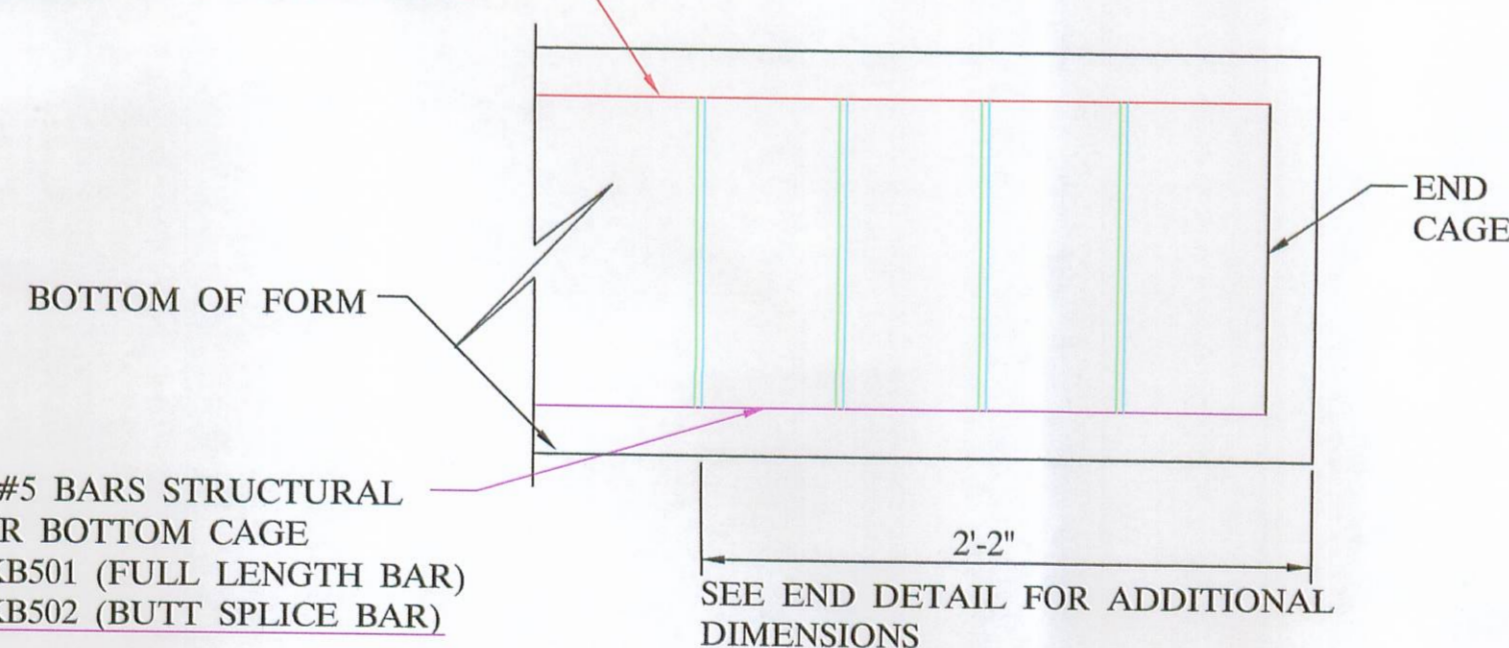


(TYP.) END DETAIL
(PLAN VIEW)

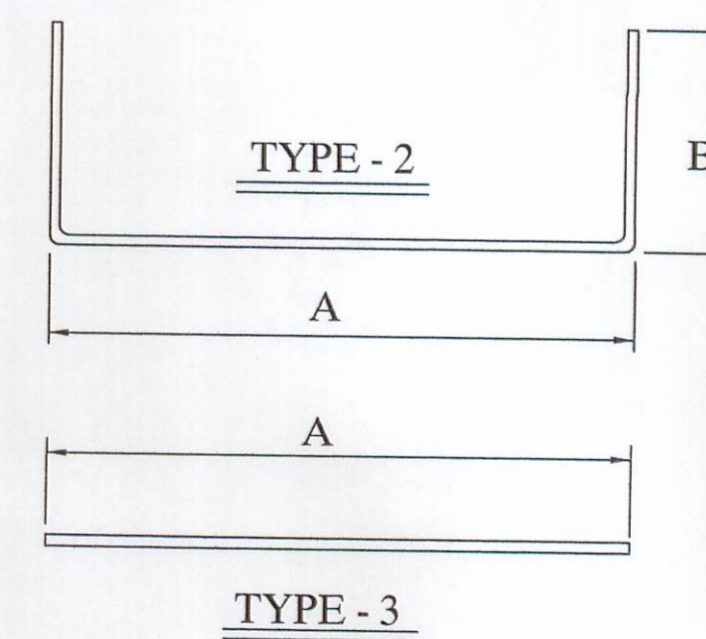


BEAM END CAGE
(ELEVATION)

TOP LONGITUDINAL BARS & TOP STIRRUPS ASSEMBLED IN TOP CAGE & PLACED IN BED IN UNITS OF VARIOUS LENGTH WITH TOP BARS BUTT SPICED AT INTERSECTIONS



ELEVATION C-C



6 - B17-48 X 35'-0" WITH NO SKEW
BAR LIST

MARK	SIZE	LENGTH	QUANTITY	SHAPE	A	B	C	D	E
B401	4	5'-6 1/2"	456	TYPE - 2	43"	13"			
B402	4	17'-4"	72	TYPE - 3	17'-4"				
B403	4	4'-8"	36	TYPE - 3	4'-8"				
B404	4	7'-3"	24	TYPE - 3	7'-3"				
B405	4	1'-1"	72	TYPE - 3	1'-1"				
B406	4	3'-8 3/4"	48	TYPE - 3	44 3/4"				
B501	5	17'-4"	24	TYPE - 3	17'-4"				
B502	5	5'-10"	12	TYPE - 3	5'-10"				

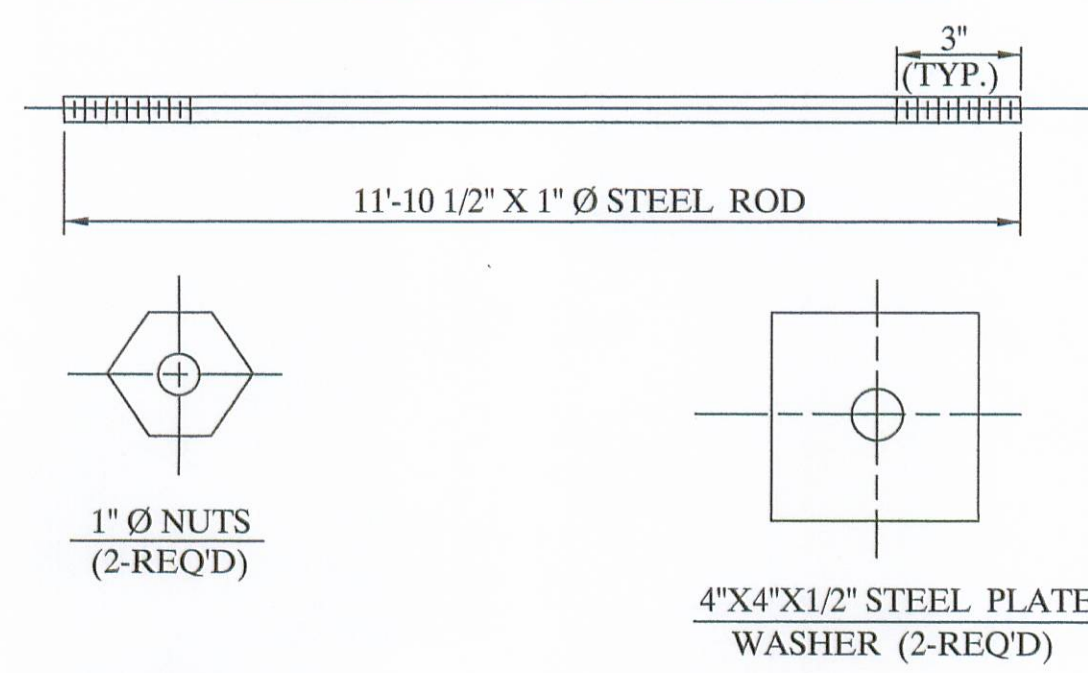


UNITED PRECAST INC.
 ROUNDHOUSE LANE
 MOUNT VERNON, OHIO 43050
 PHONE : (740) 393-1121
 FAX : (740) 393-0044

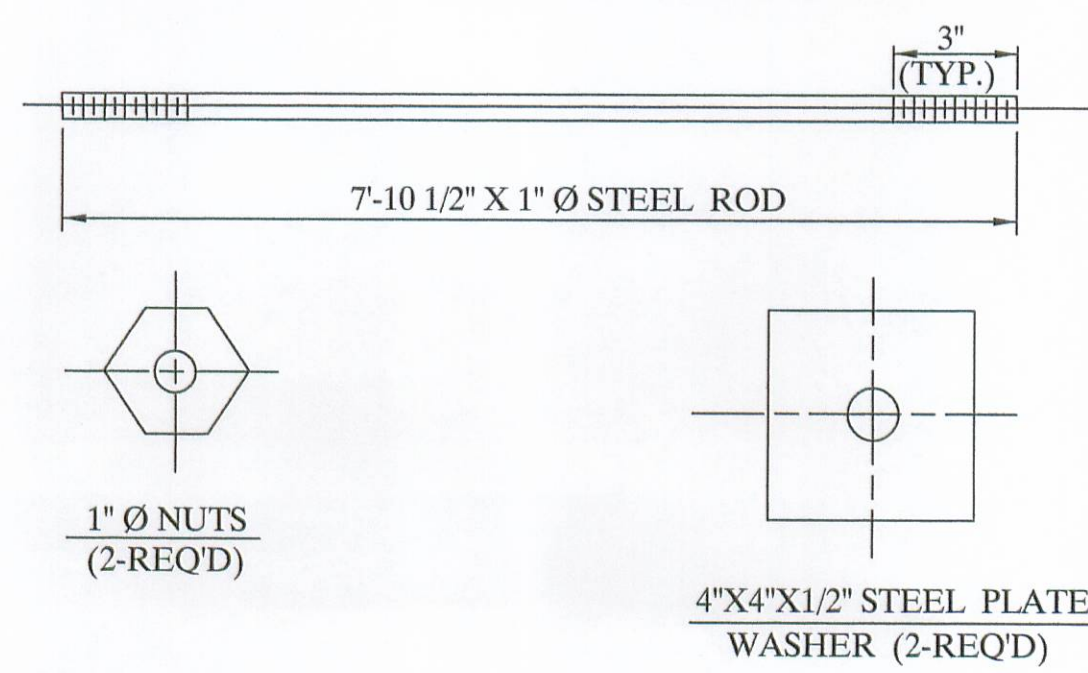
DESCRIPTION: REINFORCING DETAILS		SCALE: -----	DRAWN BY: PHIL
JOB NAME: BRIDGE NO. LOG - 157 - 0.60 LOGAN COUNTY	ITEM 515 PROJECT NO. T.R. 157	REVISED:	
DATE: JANUARY 2007	APPROVED BY: E.O.C. 2/10/07	DRAWING NO. 3 OF 4	

This drawing is the property of United Precast, Inc. or one of its affiliates and may contain information that is confidential or privileged. You are hereby notified that any disclosure, distribution or copying of the contents is prohibited without prior written consent from United Precast, Inc.

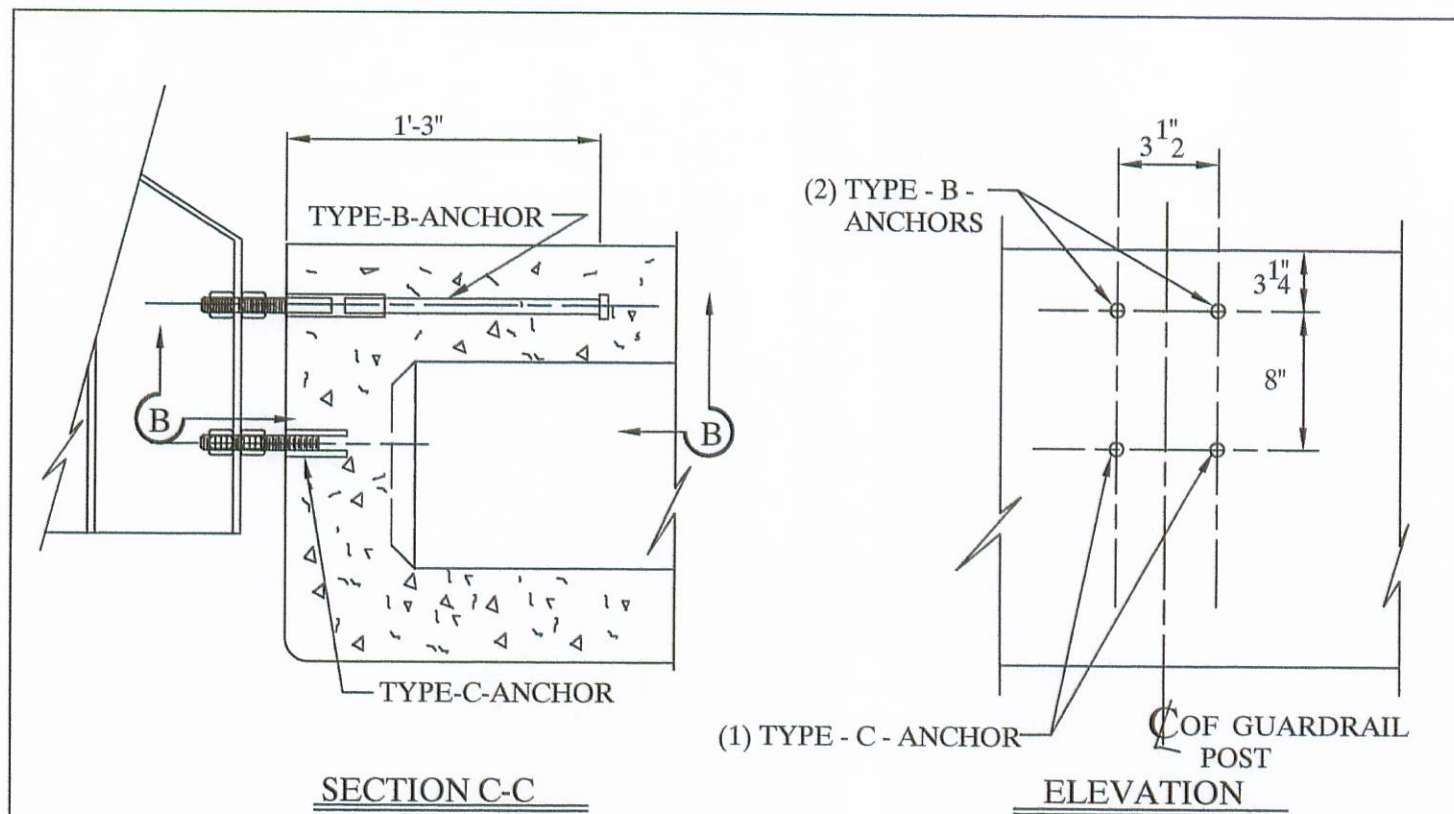
12'-0" TIE ROD ASS'Y



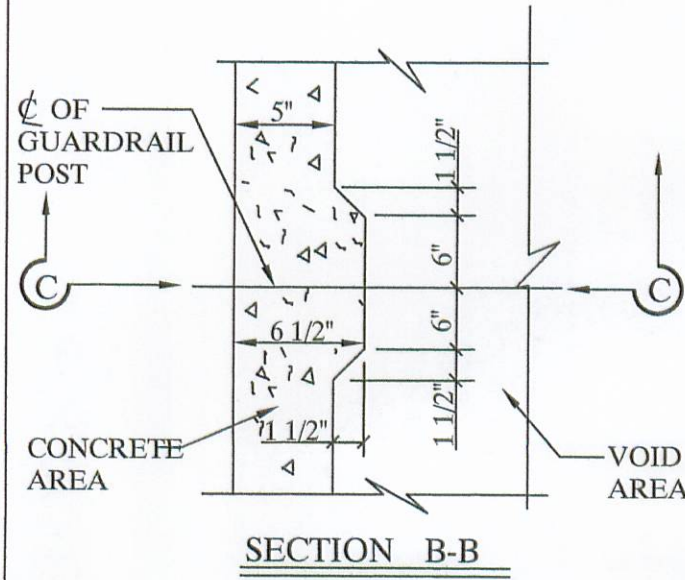
8'-0" TIE ROD ASS'Y



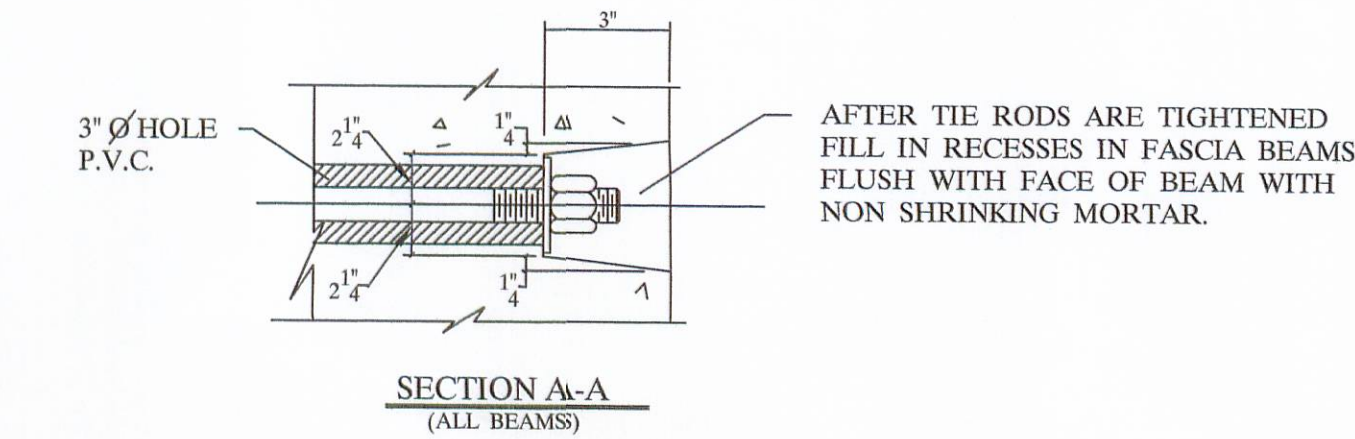
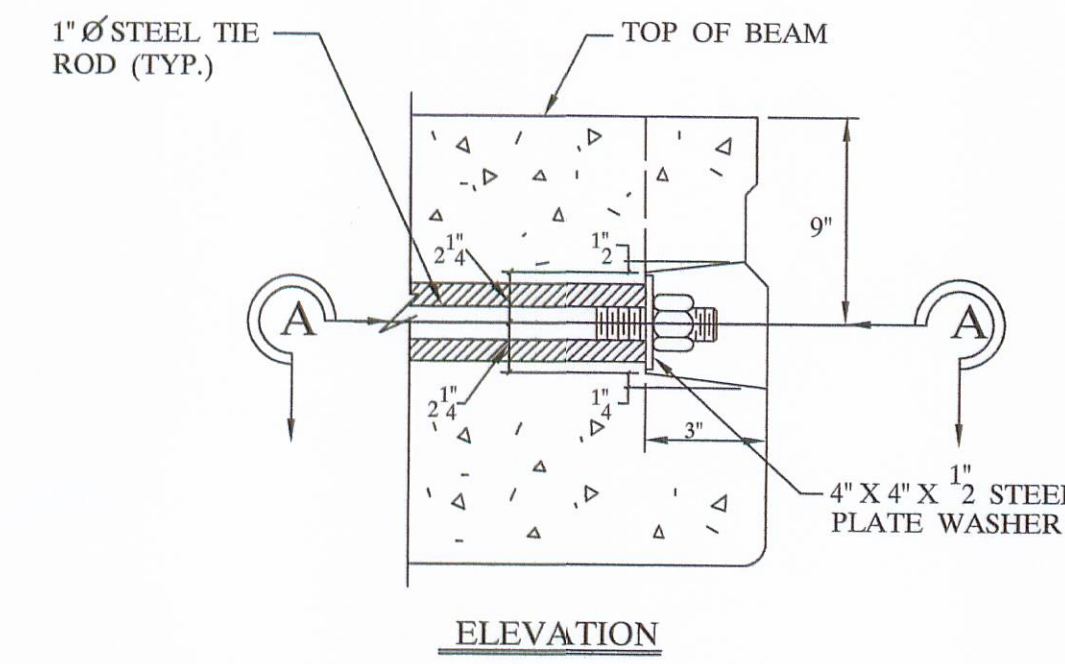
NOTE:
ALL ITEMS INCLUDING TIE RODS ACCESSORIES SHALL BE GALVANIZED IN ACCORDANCE WITH ASTM-123 OR 153, PER CMS 711.02, UNLESS OTHERWISE NOTED.



NOTE:
ONE TYPE "C" ANCHOR PROVIDE S FOR (2) STUDS (SEE BELOW).



NOTE:
TYPE B & C ANCHOR ASSEMBLIES SHALL CONFORM TO PHYSICAL PROPERTIES OF ASTM-A-325, EXCEPT MIN. ELONGATION SHALL BE 10%. THE CHEMICAL PROPERTIES ARE WAIVED.

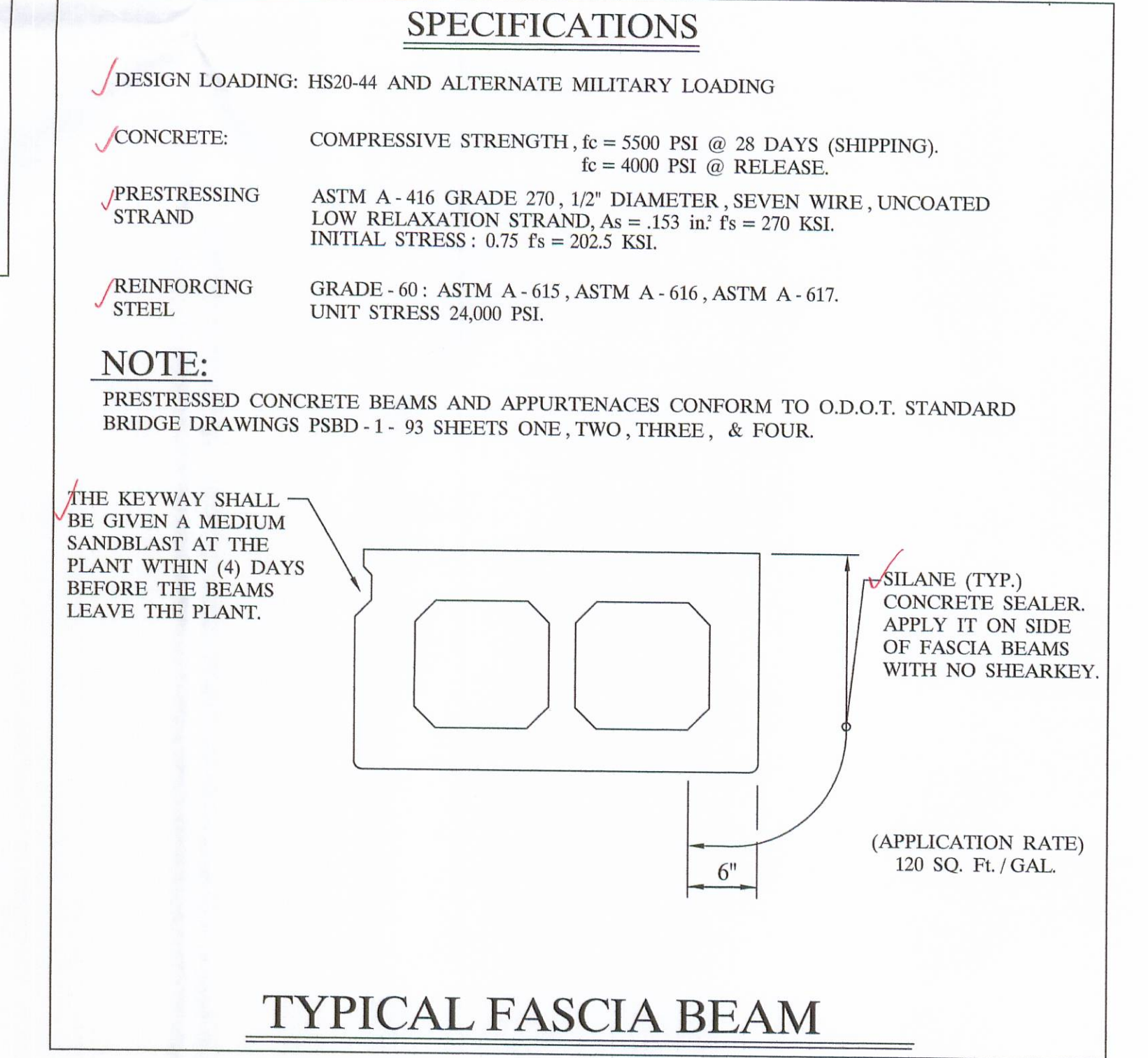
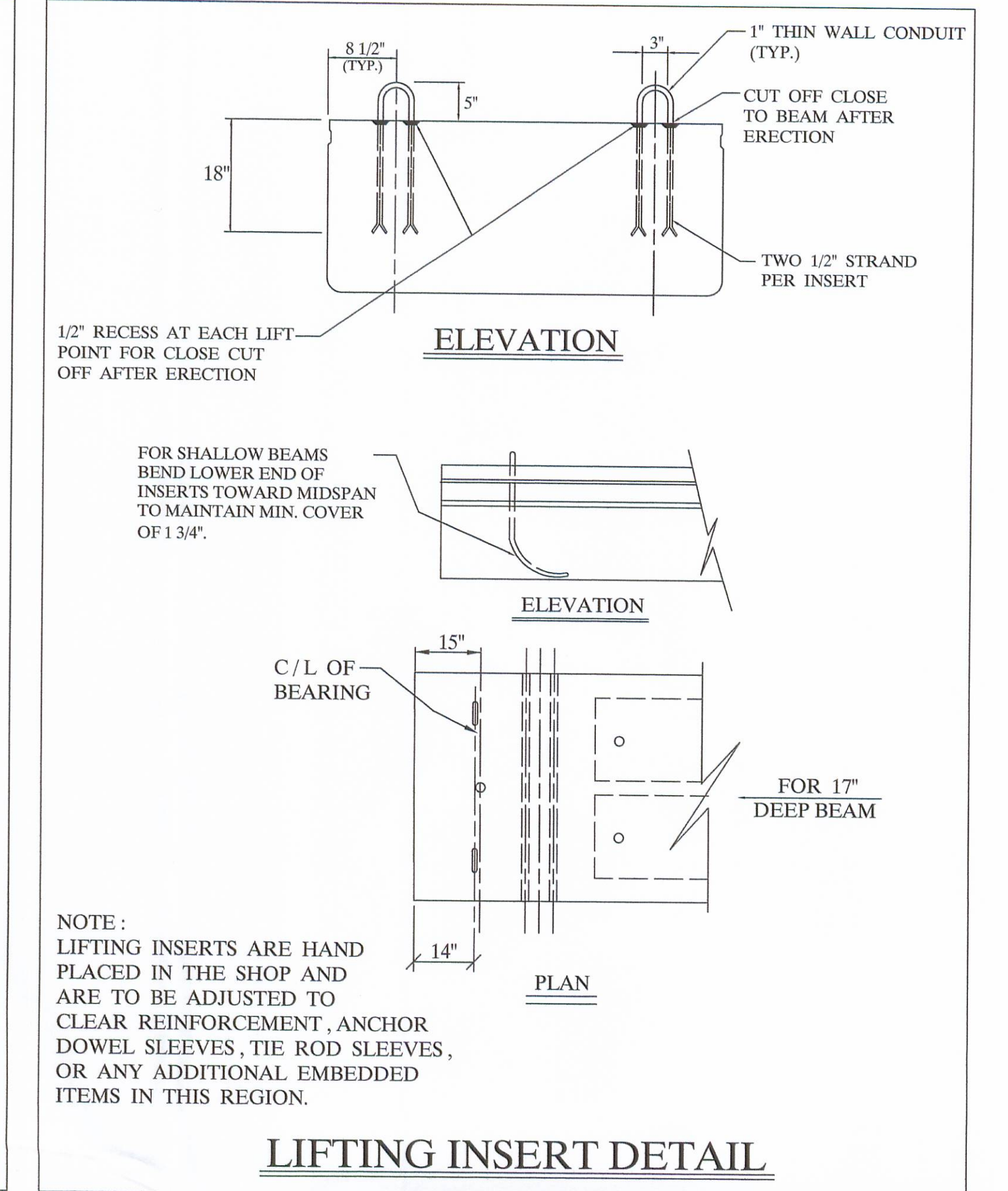
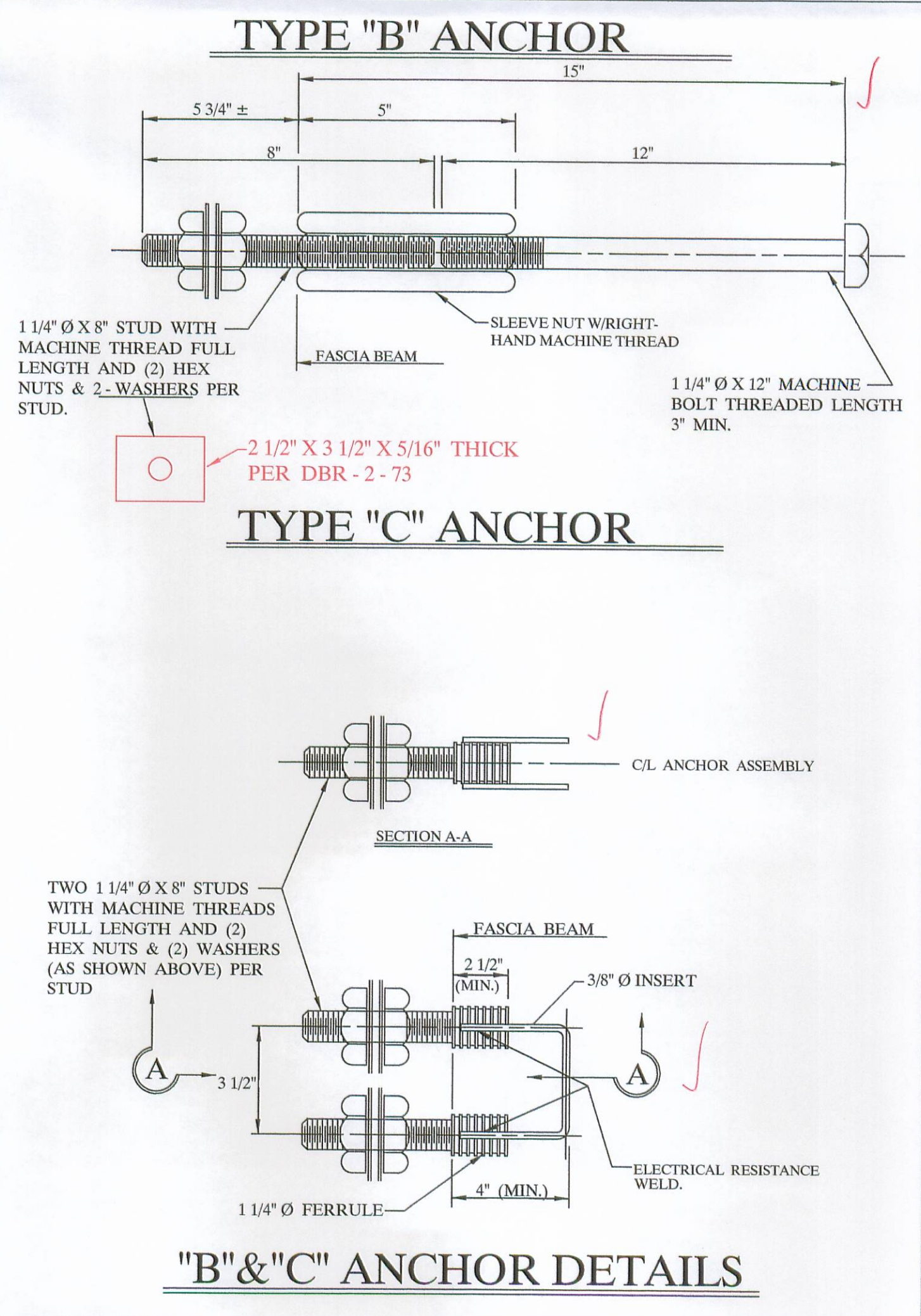


NOTE:
TIE RODS SHALL BE A311 - G1018 STEEL, OR A-36 MODIFIED.

END DETAIL OF TRANSVERSE TIE ROD ANCHORAGE

NOTE:

- 1) GALVANIZE ALL HARDWARE PER CMS. 711.02.
- 2) PROVIDE A BROOM FINISH ON TOP SURFACE OF BEAM SUITABLE FOR WATERPROOFING.
- 3) ADD D.C.I. TO CONCRETE, (4 - GAL. / CUBIC YARD).
- 4) WATERPROOF BEAM ENDS.
- 5) DETENSION STRAND SYMETRICALLY ABOUT CENTERLINE.



BRIDGE NO. LOG - 157 - 0.60	ITEM 515
LOGAN COUNTY	PROJECT NO. T.R. 157
UNITED PRECAST INC.	
ROUNDHOUSE LANE MT. VERNON, OHIO 43050 PHONE:(740)393-1121, FAX:(740)393-0044	SCALE DRAWN BY: PHIL REVISED
DATE JAN. 2007	APPROVED BY: E.O.C. 2/10/07 DRAWING NO. 4 OF 4

This drawing is the property of United Precast, Inc. or one of its affiliates and may contain information that is confidential or privileged. You are hereby notified that any disclosure, distribution or copying of the contents is prohibited without prior written consent from United Precast, Inc.