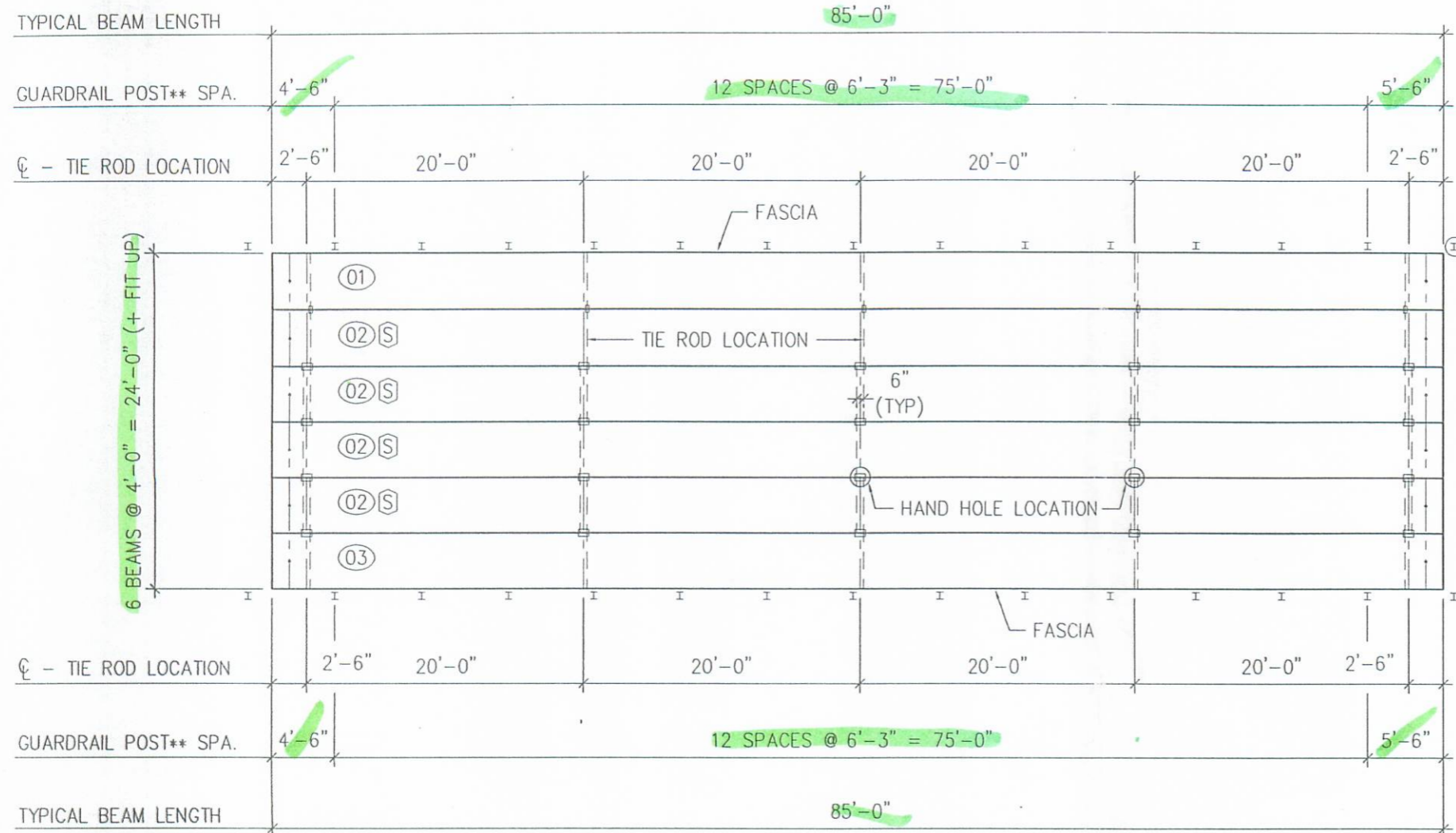


D6142_Prelim.dwg-Layout1

1:55 PM

04-05-06



**** GUARDRAIL NOTE:**
 POSTS, RAIL, TUBULAR BACK-UP & (8) APPROACH POSTS BY PSI. SHIP POSTS INSTALLED REMAINDER SHIPPED LOOSE

APPROACH POSTS BY PSI (8 REQD. - SHIP LOOSE)

MARK NO.	NO. REQD.	WEIGHT	SHIPPING WEIGHT
01	1	89,929 LBS.	47 TON
02	4	88,343 LBS.	46 TON
03	1	89,929 LBS.	47 TON

GENERAL NOTES:

1. MANUFACTURE BEAMS IN ACCORDANCE WITH ODOT SPECIFICATIONS.
2. MINIMUM CONCRETE STRENGTH @ RELEASE OF STRAND = 5,000 P.S.I
 MINIMUM CONCRETE STRENGTH @ 28 DAYS = 7,000 P.S.I
3. STRAND SHALL BE (7) WIRE, UNCOATED, LOW RELAXATION, 1/2" DIA. "OVERSIZE" 270 K.S.I. ULTIMATE STRENGTH, ASTM A-416. (A = 0.167 SQ. IN.)
4. PULL EACH STRAND TO 33,818 LBS.
5. STEEL GRADE 60, A.S.T.M. A-615.
6. HS25 & THE ALTERNATE MILITARY LOADING.
7. ALL ANCHOR BOLTS, STUDS, INSERTS, TIE RODS, NUTS, & WASHERS SHALL BE GALVANIZED, PER ODOT SPECIFICATIONS.
8. KEYWAYS SHALL BE GIVEN A MEDIUM SANDBLAST AT THE PLANT WITHIN FOUR DAYS PRIOR TO SHIPPING BEAMS.
9. KEYWAYS SHALL BE OMITTED AT FASCIA SIDE OF EXTERIOR BEAMS.
10. BROOM FINISH TOPS OF ALL BEAMS.
11. STRANDS SHALL BE DETENSIONED SYMMETRICALLY ABOUT THE C OF BEAM.
12. CONCRETE MIX SHALL CONTAIN RUSSTEC "RCI" CORROSION INHIBITOR; DOSAGE SHALL BE 4 GALLONS PER CUBIC YARD OF CONCRETE.
13. BEAM ENDS SHALL BE SEALED W/ BITUMINOUS COATING.

BRIDGE PLAN

Ⓢ = BEAM IS SYMMETRICAL

NOTE:

P.S.I. SHALL FURNISH, INCIDENTAL TO BEAMS:

- (10) 1" ϕ x 12' TIE RODS
- (5) 1" ϕ x 8' TIE RODS
- (30) 1/2" x 4" SQ. PLATE WASHERS
- (30) 1" ϕ HEX NUTS
- (12) 1" ϕ x 4'-6" DOWEL RODS (SMOOTH-A311)
- (12) 1" x 6" SQ. PEJF GROUT RETAINERS
- (24) 1" x 10" x 1'-8" ELASTOMERIC BEARING PADS
- (24) 1/8" x 10" x 1'-8" PREFORMED SHIM PADS
- (64') 7 STRAND JUTE (AS REQD.) INTERPLAST - N
- 26 ODOT TYPE 2 POSTS, INSTALLED USING:**
- (104) 1 1/4" ϕ x 8" STUDS (All Thrd)
- (208) 1 1/4" ϕ HEX NUTS
- (208) WASHERS
- (175' LF) STD. DEEP BEAM GUARDRAIL (SHIP LOOSE)
- (175' LF) STD. TUBULAR BACK-UP (SHIP LOOSE)
- (8) W6 X 25 APPROACH POSTS

2" x 1" x 96' + Fit-up Asphalt Joint sealer

*7 strand @ Melbourne
 8 strand @ decafam
 How jute is calculated
 Length of Beam x # Beams
 Strands*

*Approved as Noted
 Paul Huff 4-11-06*

STANDARD ERECTION PROCEDURE:

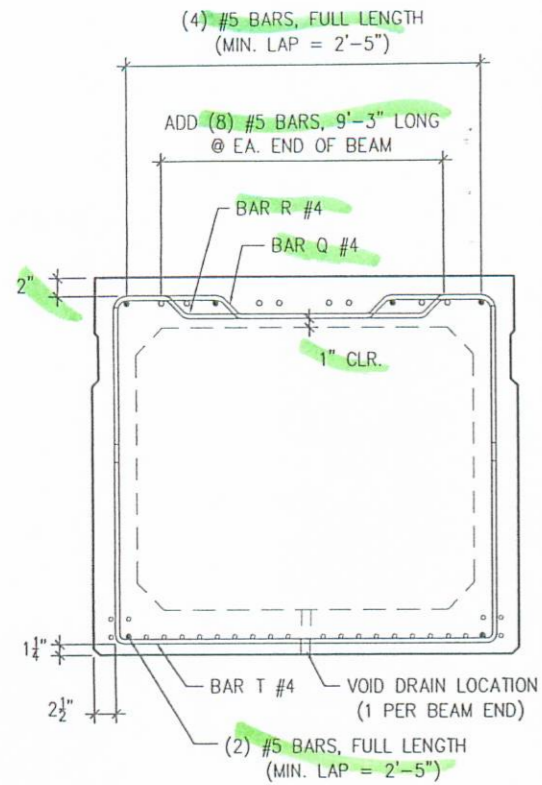
ALL LIFTING LOOPS SHOWN MUST BE USED SIMULTANEOUSLY AND EQUALLY, 90' TO THE BEAM, WHILE ERECTING WITH 2 CRANES. ANY DEVIATION FROM THIS STANDARD FOR ERECTING PURPOSES IS THE RESPONSIBILITY OF THE CONTRACTOR. THE CONTRACTOR IS ADVISED TO HAVE AN ENGINEER REVIEW ANY DEVIATION FROM THIS STANDARD WITH CONSIDERATION GIVEN TO BEAM STRESSES, STRENGTH AND STABILITY. PRESTRESS SERVICES INC. WILL NOT BE LIABLE FOR ANY VARIATIONS TO THE STANDARD PROCEDURE.

PRESTRESS SERVICES			
PROJECT OVERVIEW			
LOGAN COUNTY, OHIO BRIDGE # 153-0.22			
CONTRACTOR: LOGAN COUNTY ENGINEERS			
PRODUCING PLANT: 7855 N.W. Winchester Rd Decatur, IN 46733 PH: (260) 724-7117 FAX: (260) 724-3349		DRAFTING OFFICE: P.O. BOX 211 MELBOURNE, KY 41059 PH: (859) 441-0068 FAX: (859) 441-7986	
PRELIMINARY 4-5-06	DATE: 4-5-06	DRAWN BY: EDD	CHECKED: DB
	REVISIONS		
	CODE: B42x480	SHEET: 1 of 4	JOB NO: D6142

D6142_Prelim.dwg-Layout1

1:55 PM

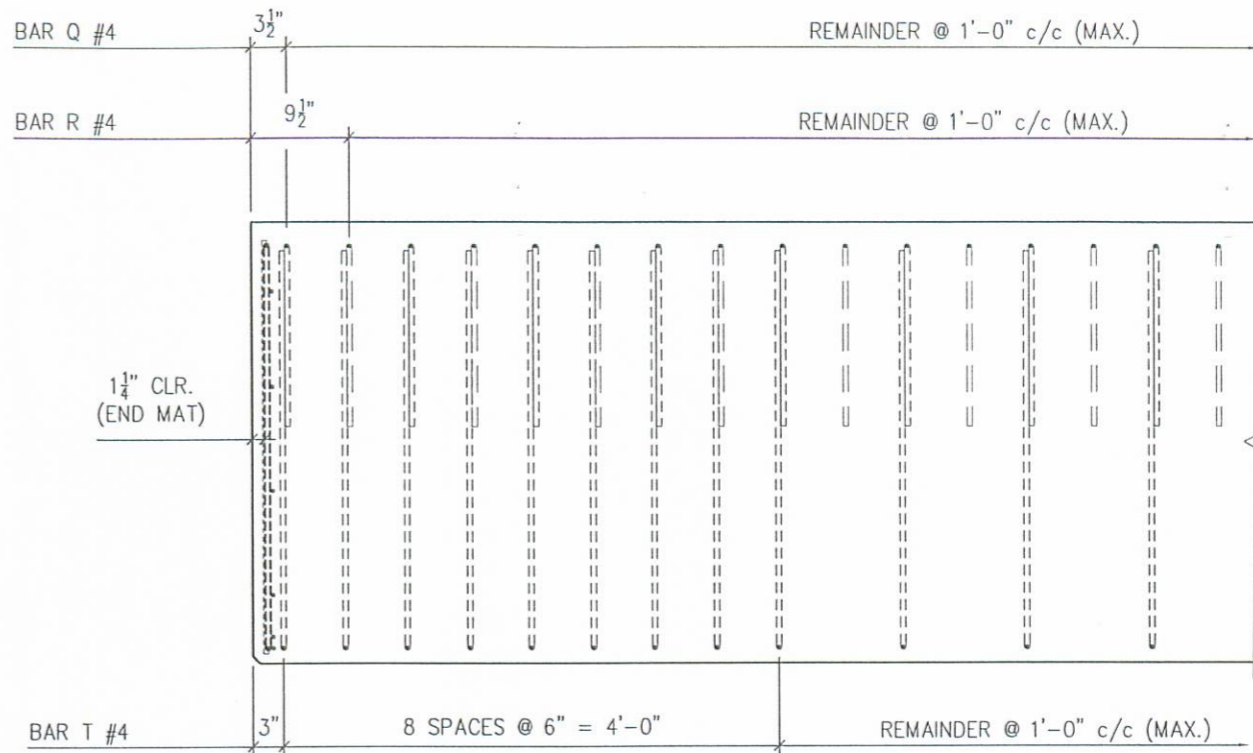
04-05-06



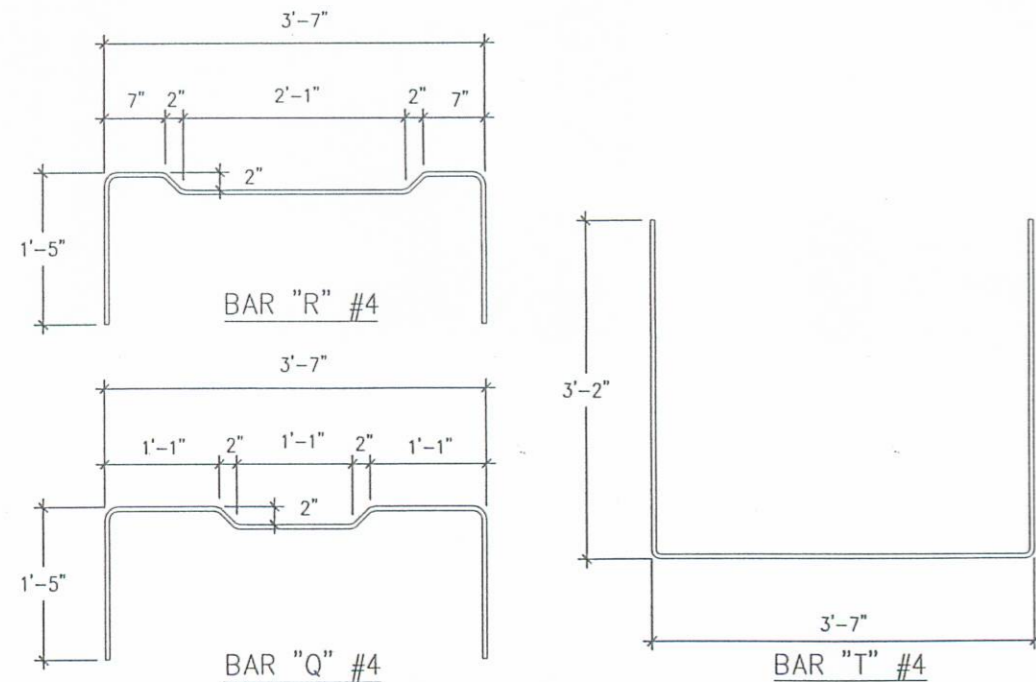
STEEL SECTION

MARK	BAR SIZE	NO.* REQD.
BAR R (TOP)	#4	85
BAR Q (TOP)	#4	86
BAR T (BOTTOM)	#4	93

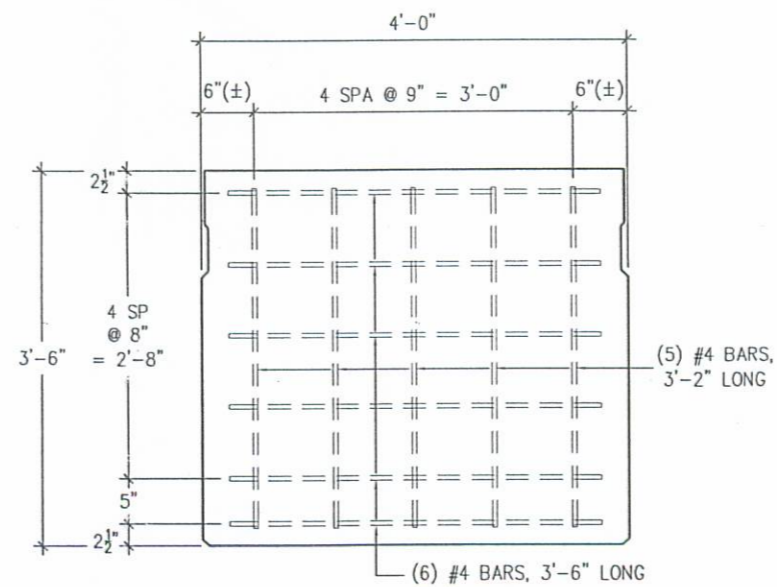
* PER BEAM



REINFORCEMENT ELEVATION



BENDING DIAGRAM



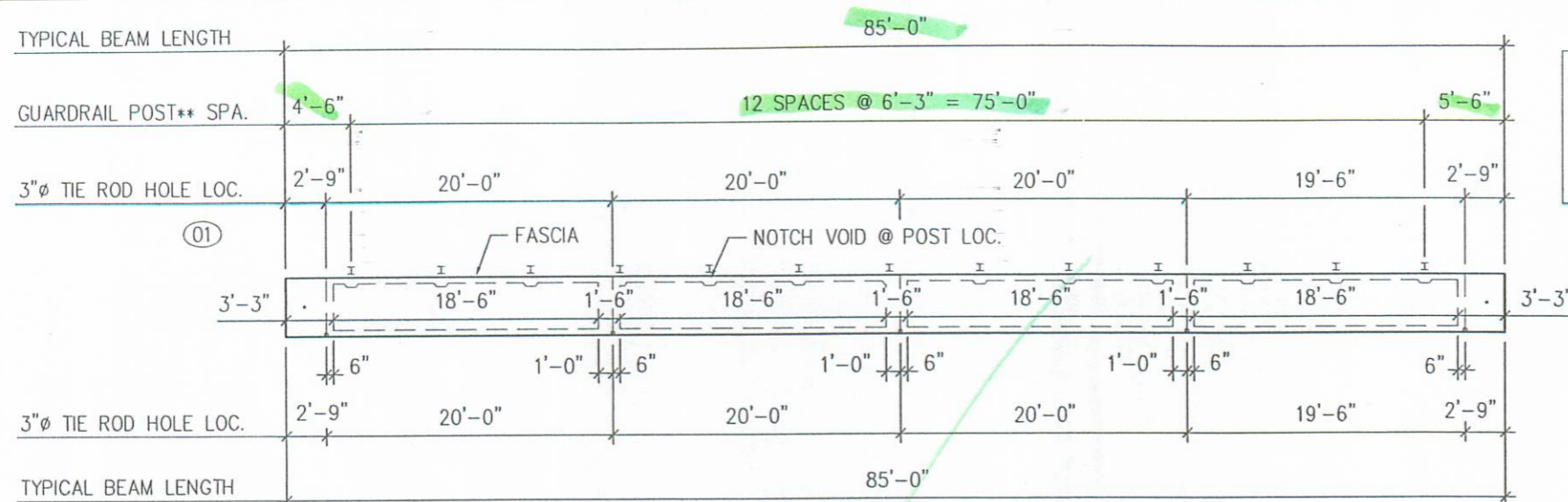
END MAT DETAIL

PRESTRESS SERVICES INDUSTRIES, LLC			
STEEL & DETAILS			
LOGAN COUNTY, OHIO BRIDGE # 153-0.22			
CONTRACTOR: LOGAN COUNTY ENGINEERS			
PRODUCING PLANT: 7855 N.W. Winchester Rd Decatur, IN 46733 PH: (260) 724-7117 FAX: (260) 724-3349		DRAFTING OFFICE: P.O. BOX 211 MELBOURNE, KY 41059 PH: (859) 441-0068 FAX: (859) 441-7986	
PRELIMINARY 4-5-06	REVISIONS	DATE: 4-5-06	DRAWN BY: EDD
	▲		CHECKED: DB
	▲		
	▲		
CODE: B42x480		SHEET: 3 of 4	JOB NO: D6142

eduncan
D6142_Prelim.dwg-Layout1

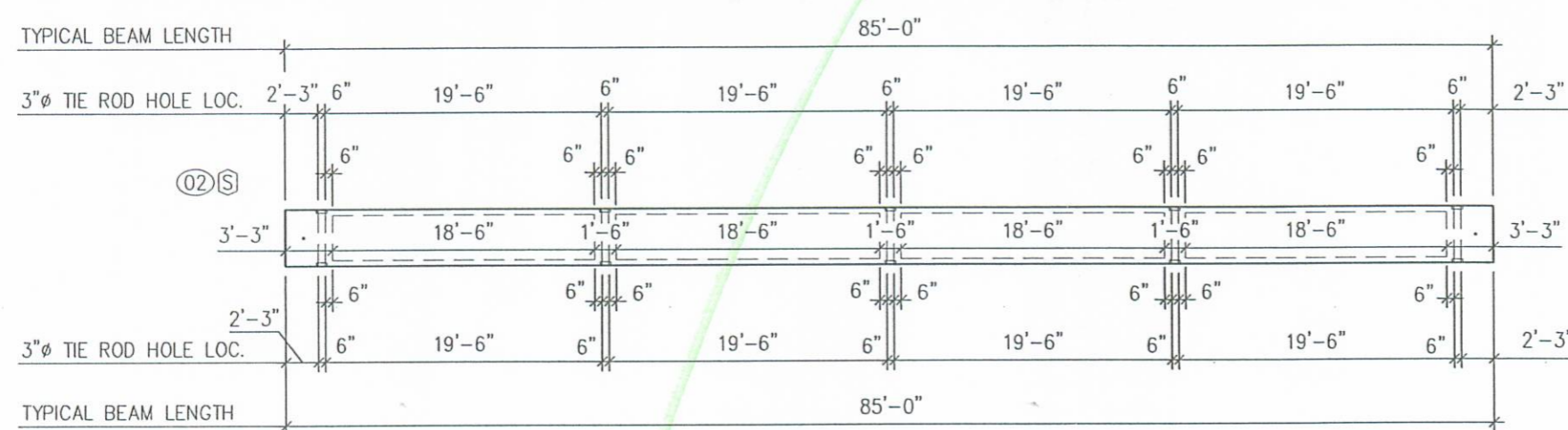
1:55 PM

04-05-06



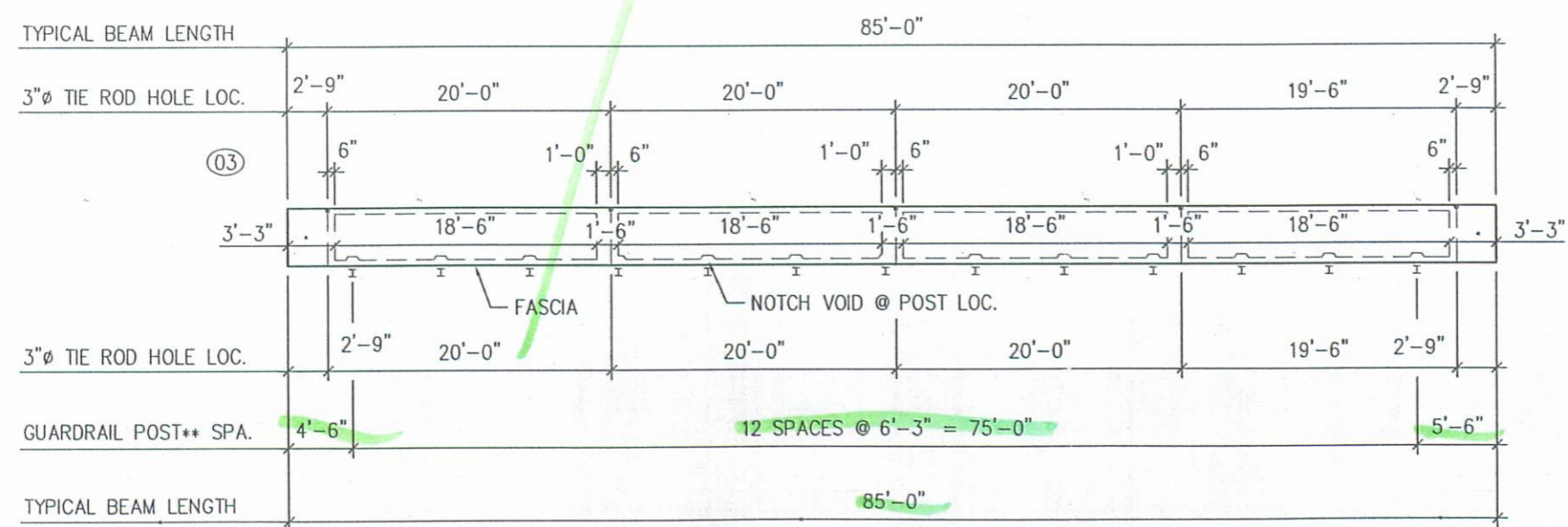
**** GUARDRAIL NOTE:**
POSTS, RAIL, TUBULAR
BACK-UP & (8) APPROACH
POSTS BY PSI. SHIP POSTS
INSTALLED REMAINDER
SHIPPED LOOSE

TIE ROD / VOID LAYOUT MK. 01 (1 REQD. THUS) SHIPPING WT. = 47 TON



TIE ROD / VOID LAYOUT MK. 02 (4 REQD. THUS) SHIPPING WT. = 46 TON

Ⓢ = BEAM IS SYMMETRICAL



TIE ROD / VOID LAYOUT MK. 03 (1 REQD. THUS) SHIPPING WT. = 47 TON

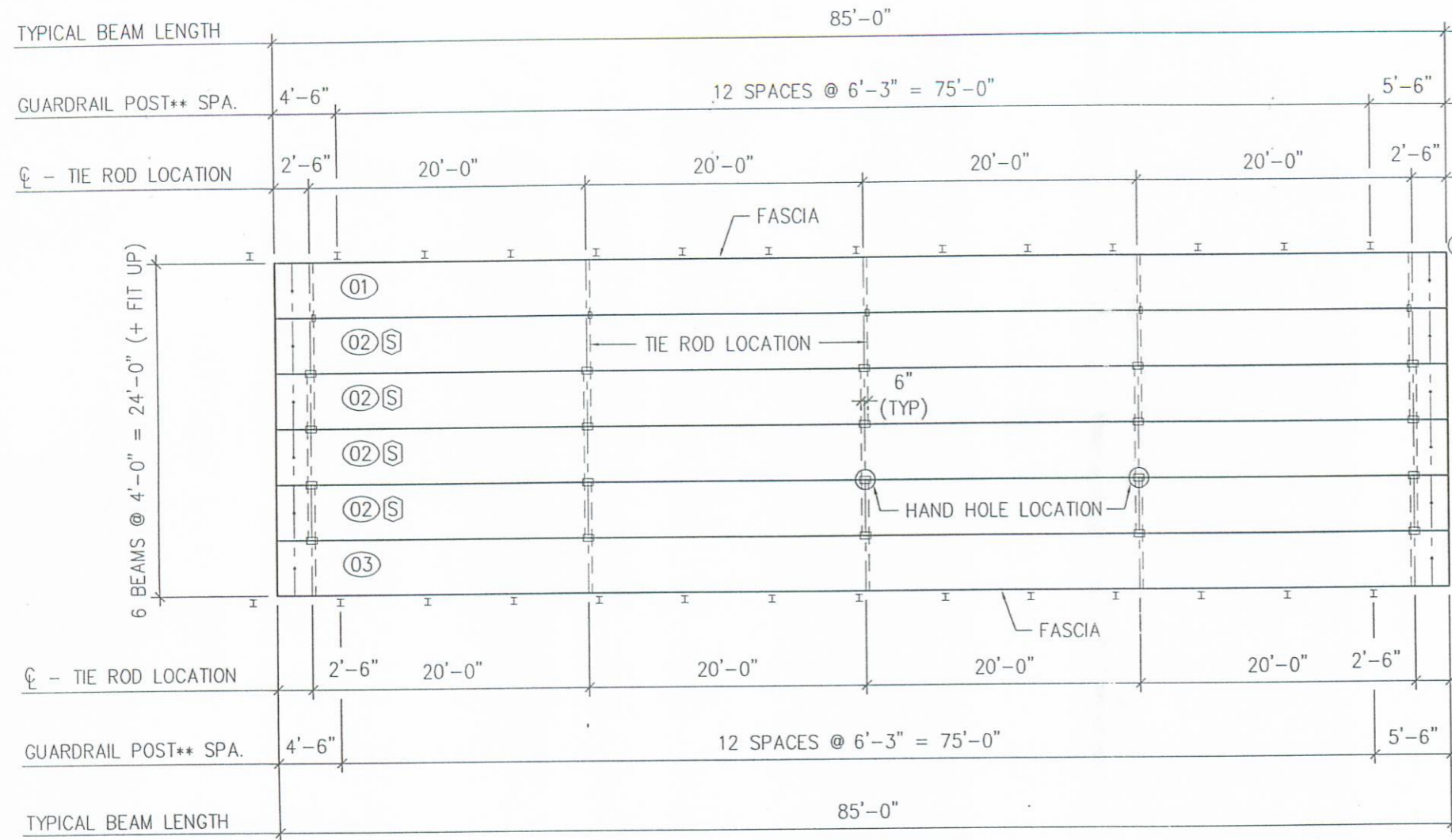
PRESTRESS SERVICES INDUSTRIES, LLC		
BEAM LAYOUTS		
LOGAN COUNTY, OHIO BRIDGE # 153-0.22		
CONTRACTOR: LOGAN COUNTY ENGINEERS		
PRODUCING PLANT: 7855 N.W. Winchester Rd Decatur, IN 46733 PH: (260) 724-7117 FAX: (260) 724-3349	DRAFTING OFFICE: P.O. BOX 211 MELBOURNE, KY 41059 PH: (859) 441-0068 FAX: (859) 441-7986	
DATE: 4-5-06	DRAWN BY: EDD	CHECKED: DB
REVISIONS		
PRELIMINARY 4-5-06	CODE: B42x480	SHEET: 4 of 4
		JOB NO: D6142

eduncan

D6142_Prelim.dwg-Layout1

1:55 PM

04-05-06



BRIDGE PLAN
 (S) = BEAM IS SYMMETRICAL

NOTE:
P.S.I. SHALL FURNISH, INCIDENTAL TO BEAMS:

- (10) 1" ϕ x 12' TIE RODS
- (5) 1" ϕ x 8' TIE RODS
- (30) 1/2" x 4" SQ. PLATE WASHERS
- (30) 1" ϕ HEX NUTS
- (12) 1" ϕ x 4'-6" DOWEL RODS (SMOOTH-A311)
- (12) 1" x 6" SQ. PEJF GROUT RETAINERS
- (24) 1" x 10" x 1'-8" ELASTOMERIC BEARING PADS
- (24) 1/8" x 10" x 1'-8" PREFORMED SHIM PADS
- (64') 7 STRAND JUTE (AS REQD.) INTERPLAST - N

26 ODOT TYPE 2 POSTS, INSTALLED USING:

- (104) 1 1/4" ϕ x 8" STUDS (All Thrd)
- (208) 1 1/4" ϕ HEX NUTS
- (208) WASHERS
- (175' LF) STD. DEEP BEAM GUARDRAIL (SHIP LOOSE)
- (175' LF) STD. TUBULAR BACK-UP (SHIP LOOSE)
- (8) W6 X 25 APPROACH POSTS

**** GUARDRAIL NOTE:**
 POSTS, RAIL, TUBULAR BACK-UP & (8) APPROACH POSTS BY PSI. SHIP POSTS INSTALLED REMAINDER SHIPPED LOOSE

APPROACH POSTS BY PSI (8 REQD. - SHIP LOOSE)



MARK NO.	NO. REQD.	WEIGHT	SHIPPING WEIGHT
01	1	89,929 LBS.	47 TON
02	4	88,343 LBS.	46 TON
03	1	89,929 LBS.	47 TON

GENERAL NOTES:

1. MANUFACTURE BEAMS IN ACCORDANCE WITH ODOT SPECIFICATIONS.
2. MINIMUM CONCRETE STRENGTH @ RELEASE OF STRAND = 5,000 P.S.I. MINIMUM CONCRETE STRENGTH @ 28 DAYS = 7,000 P.S.I.
3. STRAND SHALL BE (7) WIRE, UNCOATED, LOW RELAXATION, 1/2" DIA. "OVERSIZE" 270 K.S.I. ULTIMATE STRENGTH, ASTM A-416. (A = 0.167 SQ. IN.)
4. PULL EACH STRAND TO 33,818 LBS.
5. STEEL GRADE 60, A.S.T.M. A-615.
6. HS25 & THE ALTERNATE MILITARY LOADING.
7. ALL ANCHOR BOLTS, STUDS, INSERTS, TIE RODS, NUTS, & WASHERS SHALL BE GALVANIZED, PER ODOT SPECIFICATIONS.
8. KEYWAYS SHALL BE GIVEN A MEDIUM SANDBLAST AT THE PLANT WITHIN FOUR DAYS PRIOR TO SHIPPING BEAMS.
9. KEYWAYS SHALL BE OMITTED AT FASCIA SIDE OF EXTERIOR BEAMS.
10. BROOM FINISH TOPS OF ALL BEAMS.
11. STRANDS SHALL BE DETENSIONED SYMMETRICALLY ABOUT THE ϕ OF BEAM.
12. CONCRETE MIX SHALL CONTAIN RUSSTEC "RCI" CORROSION INHIBITOR; DOSAGE SHALL BE 4 GALLONS PER CUBIC YARD OF CONCRETE.
13. BEAM ENDS SHALL BE SEALED W/ BITUMINOUS COATING.

STANDARD ERECTION PROCEDURE:

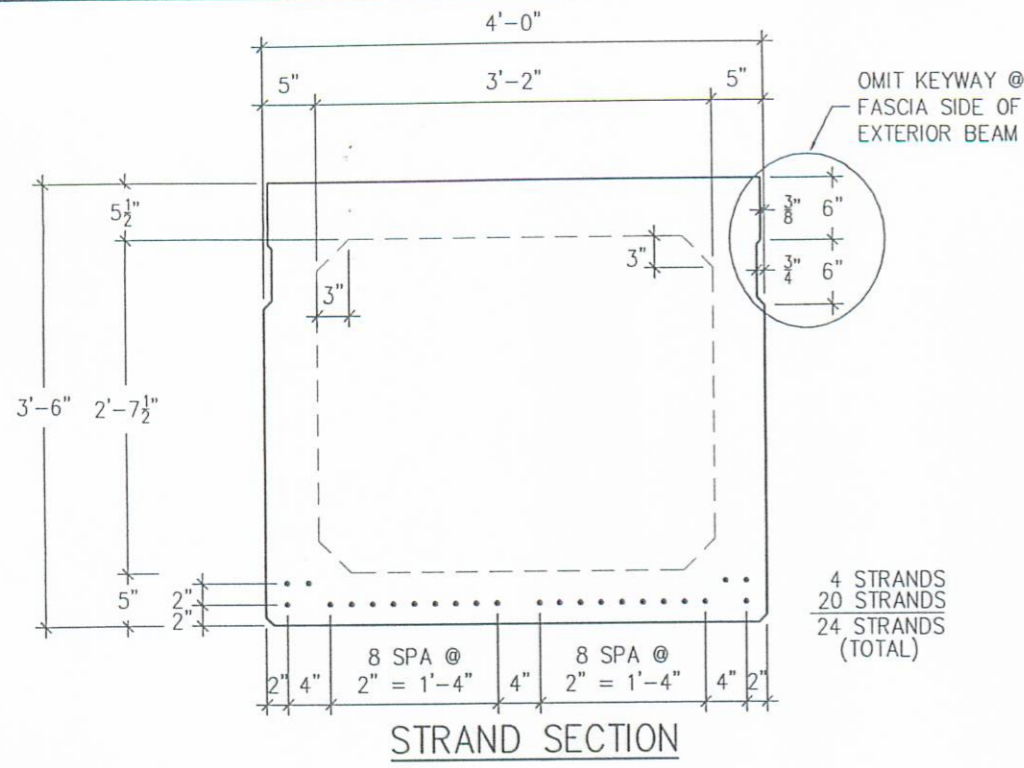
ALL LIFTING LOOPS SHOWN MUST BE USED SIMULTANEOUSLY AND EQUALLY, 90° TO THE BEAM, WHILE ERECTING WITH 2 CRANES. ANY DEVIATION FROM THIS STANDARD FOR ERECTING PURPOSES IS THE RESPONSIBILITY OF THE CONTRACTOR. THE CONTRACTOR IS ADVISED TO HAVE AN ENGINEER REVIEW ANY DEVIATION FROM THIS STANDARD WITH CONSIDERATION GIVEN TO BEAM STRESSES, STRENGTH AND STABILITY. PRESTRESS SERVICES INC. WILL NOT BE LIABLE FOR ANY VARIATIONS TO THE STANDARD PROCEDURE.

PRESTRESS SERVICES INDUSTRIES, LLC			
PROJECT OVERVIEW			
LOGAN COUNTY, OHIO BRIDGE # 153-0.22			
CONTRACTOR: LOGAN COUNTY ENGINEERS			
PRODUCING PLANT: 7855 N.W. Winchester Rd Decatur, IN 46733 PH: (260) 724-7117 FAX: (260) 724-3349		DRAFTING OFFICE: P.O. BOX 211 MELBOURNE, KY 41059 PH: (859) 441-0068 FAX: (859) 441-7986	
PRELIMINARY 4-5-06	DATE: 4-5-06	DRAWN BY: EDD	CHECKED: DB
	REVISIONS:		
CODE: B42x480		SHEET: 1 of 4	
JOB NO: D6142			

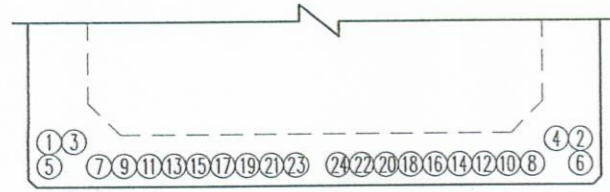
D6142_Prelim.dwg-Layout1

1:55 PM

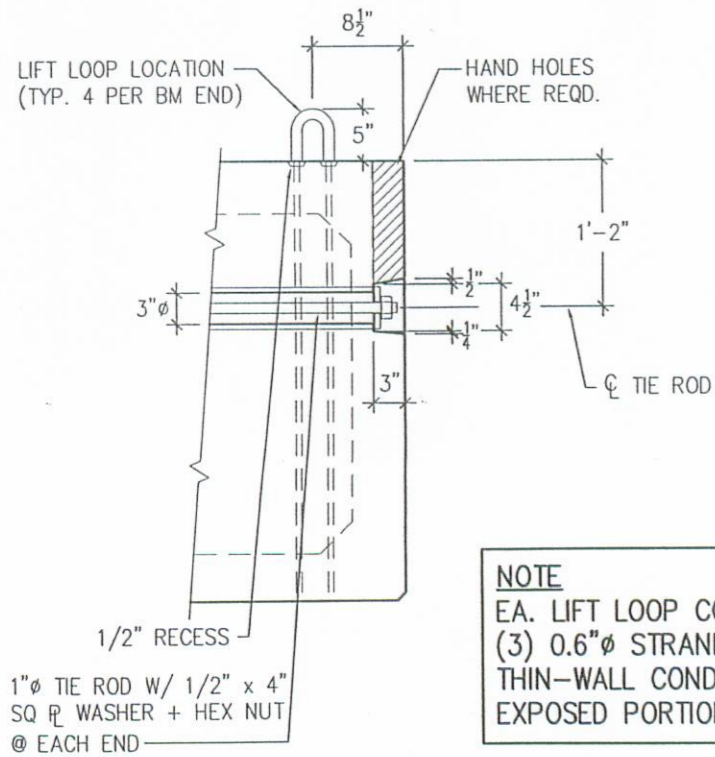
04-05-06



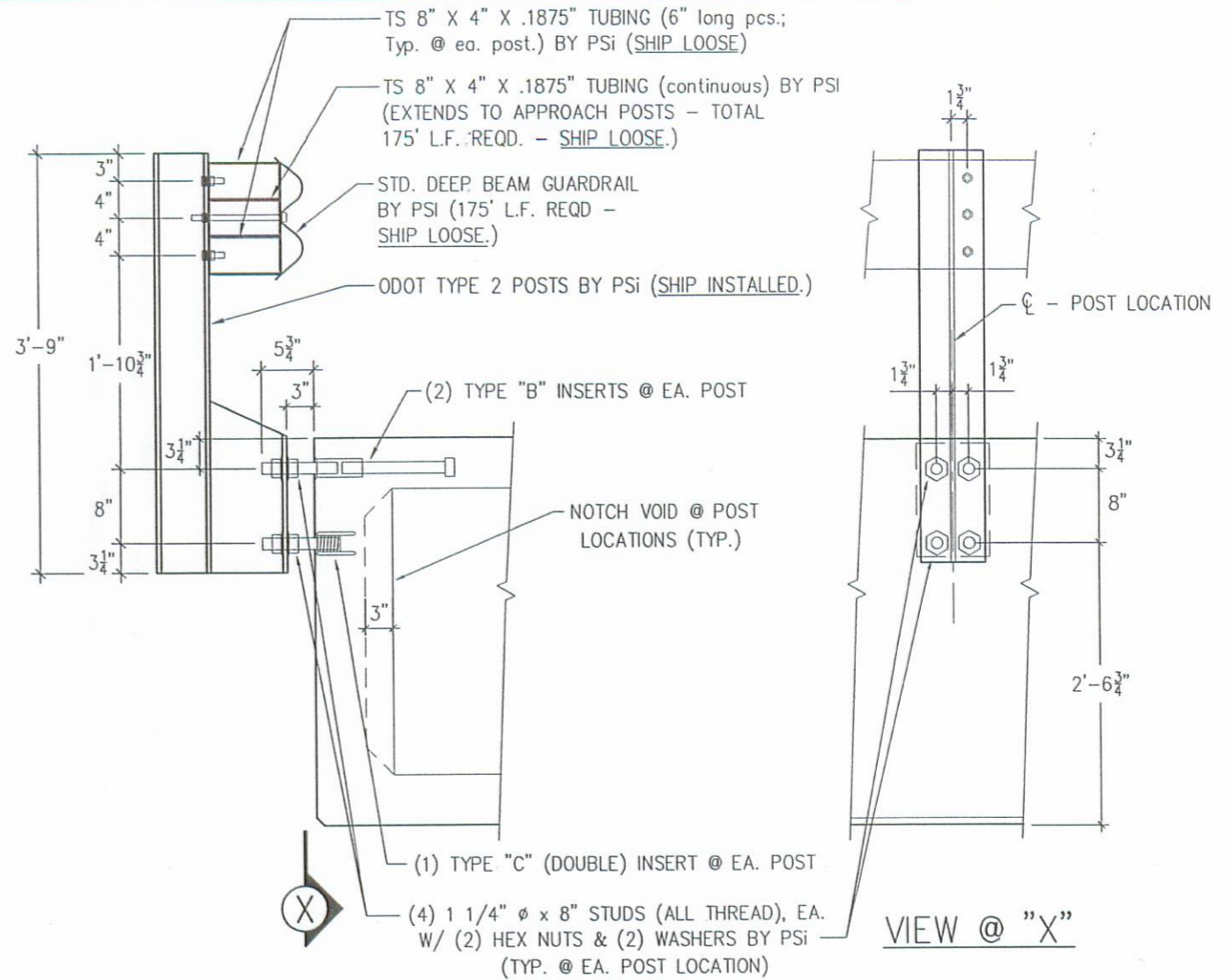
STRAND SECTION



DETENSIONING PROCEDURE

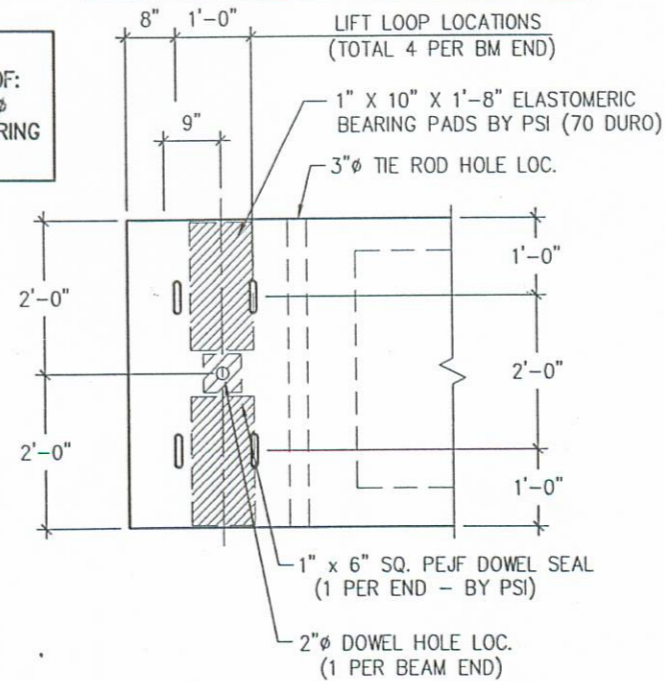


TIE ROD DETAIL



GUARDRAIL INSERT DETAIL

NOTE
EA. LIFT LOOP CONSISTS OF:
(3) 0.6" ϕ STRANDS W/ 1" ϕ THIN-WALL CONDUIT COVERING EXPOSED PORTION.



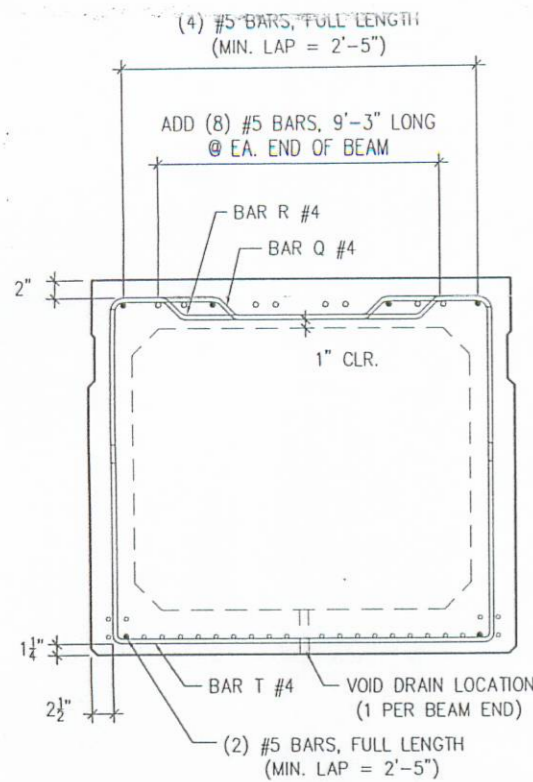
BEAM END PLAN

PRESTRESS SERVICES <small>INDUSTRIES, INC.</small>			
STRAND & DETAILS			
LOGAN COUNTY, OHIO BRIDGE # 153-0.22			
CONTRACTOR: LOGAN COUNTY ENGINEERS			
PRODUCING PLANT: 7855 N.W. Winchester Rd Decatur, IN 46733 PH: (260) 724-7117 FAX: (260) 724-3349		DRAFTING OFFICE: P.O. BOX 211 MELBOURNE, KY 41059 PH: (859) 441-0068 FAX: (859) 441-7986	
PRELIMINARY 4-5-06	DATE: 4-5-06	DRAWN BY: EDD	CHECKED: DB
	REVISIONS		
	CODE: B42x480	SHEET: 2 of 4	JOB NO: D6142

D6142_Prelim.dwg-Layout1

1:55 PM

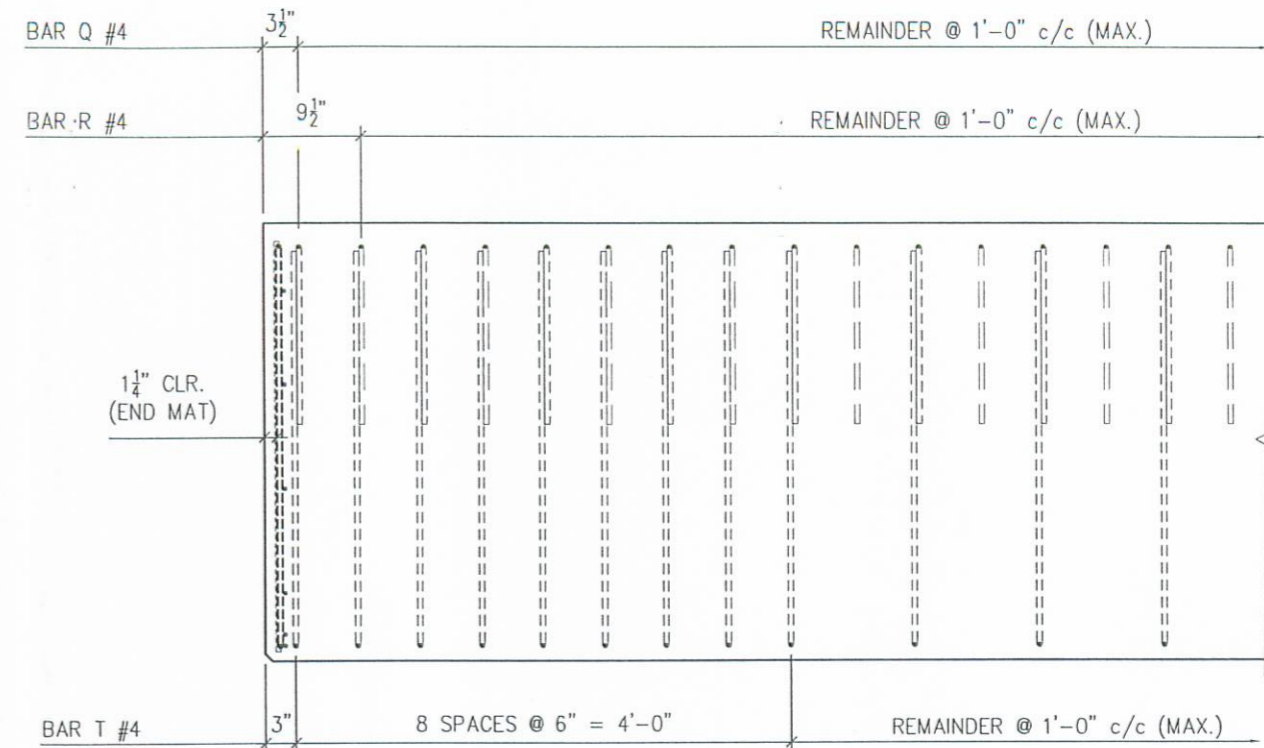
04-05-06



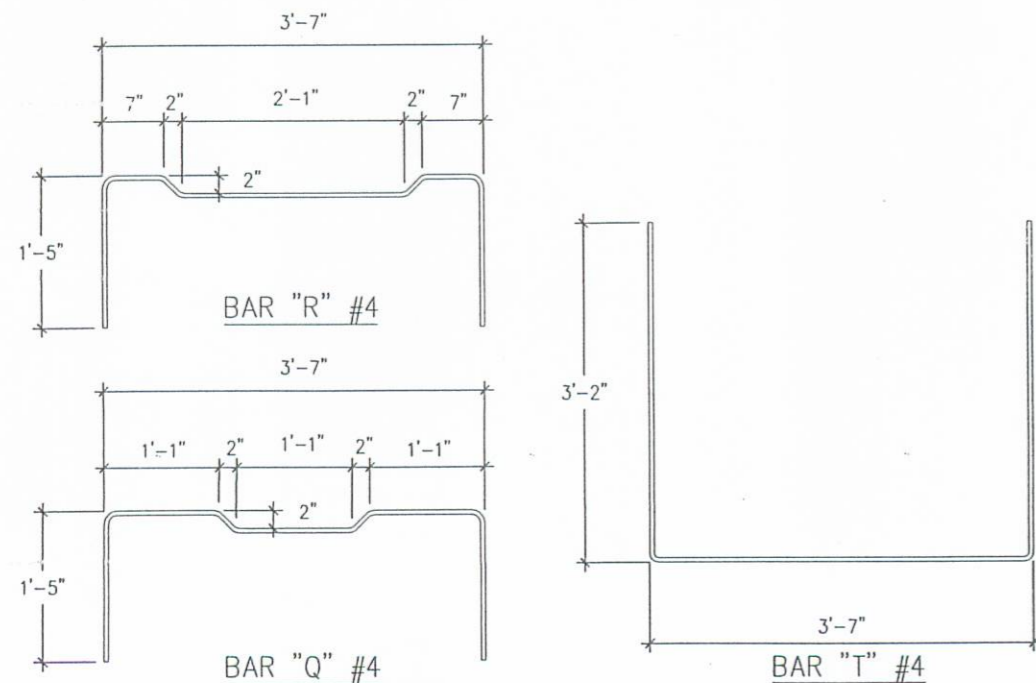
STEEL SECTION

MARK	BAR SIZE	NO.* REQD.
BAR R (TOP)	#4	85
BAR Q (TOP)	#4	86
BAR T (BOTTOM)	#4	93

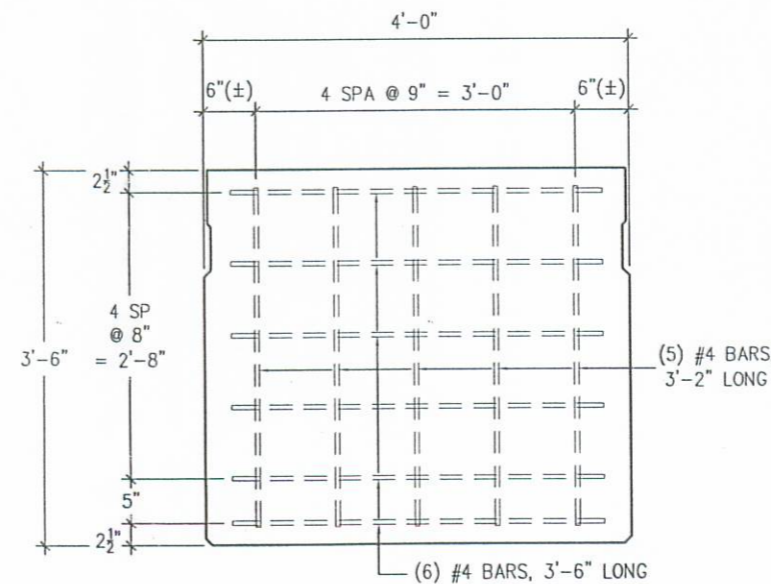
* PER BEAM



REINFORCEMENT ELEVATION



BENDING DIAGRAM



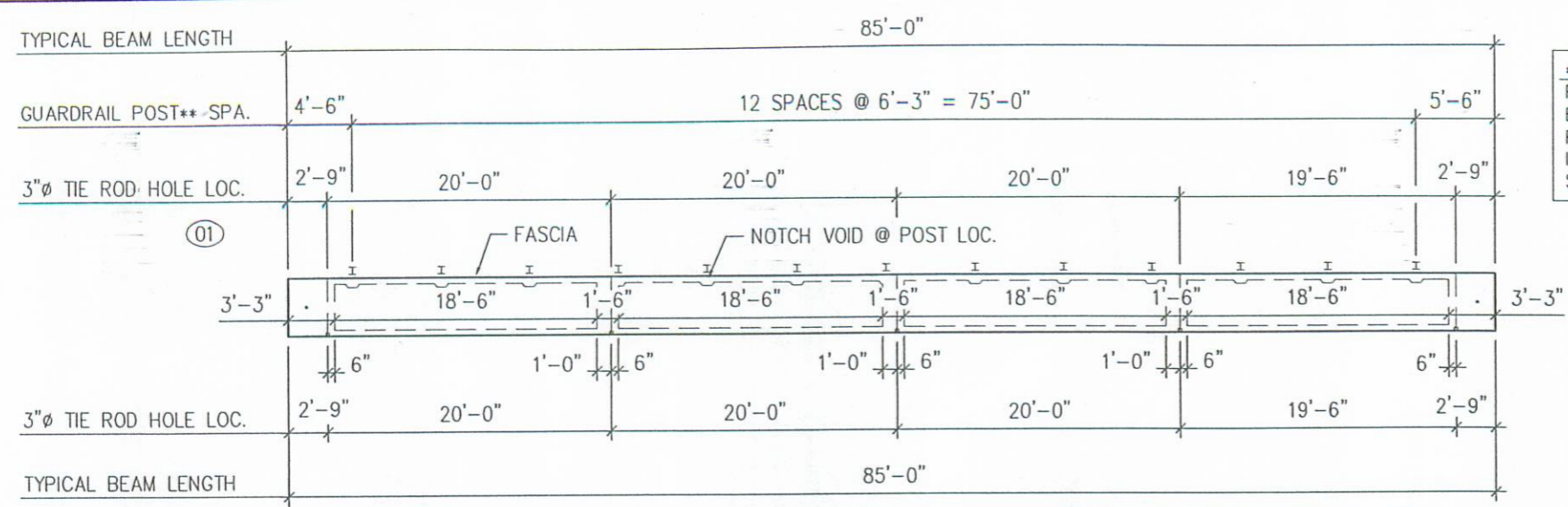
END MAT DETAIL

PRESTRESS SERVICES INDUSTRIES, L.P.			
STEEL & DETAILS			
LOGAN COUNTY, OHIO BRIDGE # 153-0.22			
CONTRACTOR: LOGAN COUNTY ENGINEERS			
PRODUCING PLANT: 7855 N.W. Winchester Rd Decatur, IN 46733 PH: (260) 724-7117 FAX: (260) 724-3349		DRAFTING OFFICE: P.O. BOX 211 MELBOURNE, KY 41059 PH: (859) 441-0068 FAX: (859) 441-7986	
PRELIMINARY 4-5-06	DATE: 4-5-06	DRAWN BY: EDD	CHECKED: DB
	REVISIONS		
CODE: B42x480		SHEET: 3 of 4	
JOB NO: D6142			

eduncan
D6142_Prelim.dwg-Layout1

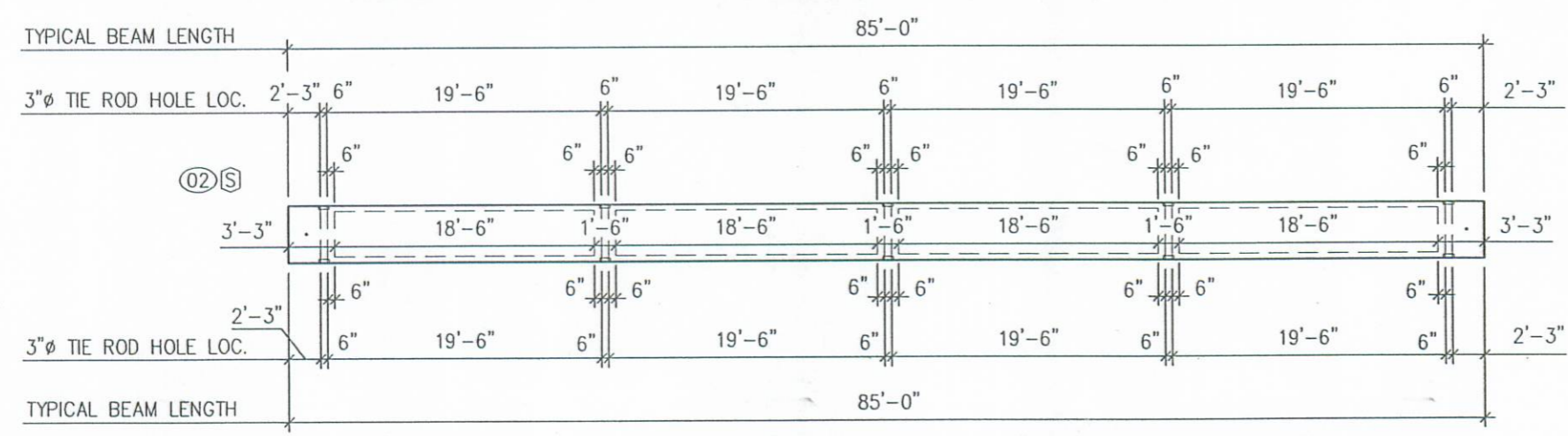
1:55 PM

04-05-06



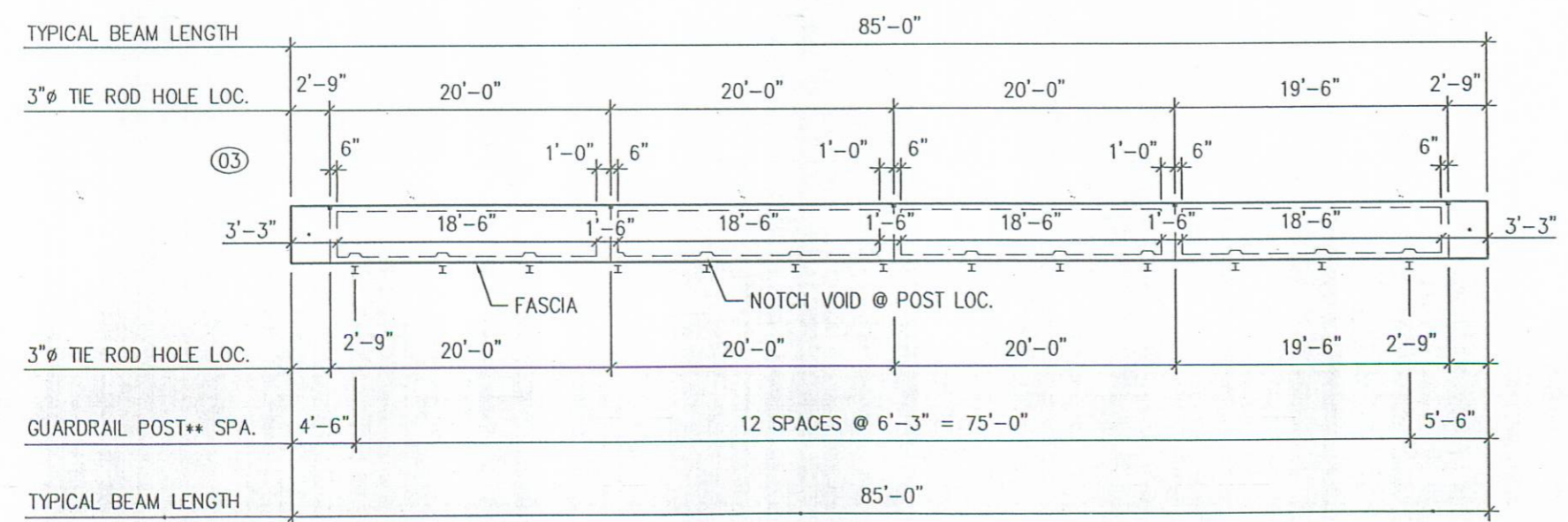
**** GUARDRAIL NOTE:**
 POSTS, RAIL, TUBULAR
 BACK-UP & (8) APPROACH
 POSTS BY PSI. SHIP POSTS
 INSTALLED REMAINDER
 SHIPPED LOOSE

TIE ROD / VOID LAYOUT MK. 01 (1 REQD. THUS) SHIPPING WT. = 47 TON



TIE ROD / VOID LAYOUT MK. 02 (4 REQD. THUS) SHIPPING WT. = 46 TON

Ⓢ = BEAM IS SYMMETRICAL



TIE ROD / VOID LAYOUT MK. 03 (1 REQD. THUS) SHIPPING WT. = 47 TON

PRESTRESS SERVICES INDUSTRIES, LLC		
BEAM LAYOUTS		
LOGAN COUNTY, OHIO BRIDGE # 153-0.22		
CONTRACTOR: LOGAN COUNTY ENGINEERS		
PRODUCING PLANT: 7855 N.W. Winchester Rd Decatur, IN 46733 PH: (260) 724-7117 FAX: (260) 724-3349	DRAFTING OFFICE: P.O. BOX 211 MELBOURNE, KY 41059 PH: (859) 441-0068 FAX: (859) 441-7986	
PRELIMINARY 4-5-06	DATE: 4-5-06 DRAWN BY: EDD CHECKED: DB	
REVISIONS		
CODE: B42x480	SHEET: 4 of 4	JOB NO: D6142