

FRED G. WOODS etux
198.38 Ac.

SIM HOWELL etux
50.00 Ac.

FOREST THOMAS etux
50.00 Ac.

FOREST THOMAS etux
3.00 Ac.

Existing Structure
Type - Pratt Truss
Span - 27'
Roadway - 16'
Skew - 10° RF

Proposed Structure
Type - 1/2" Pipe Arch
Size - 13" x 8' 7"
Length - 72 Lin. Ft.
Skew - 15° RF

Iron
Sta. 119+63.4
Δ = 0°-12' Lt

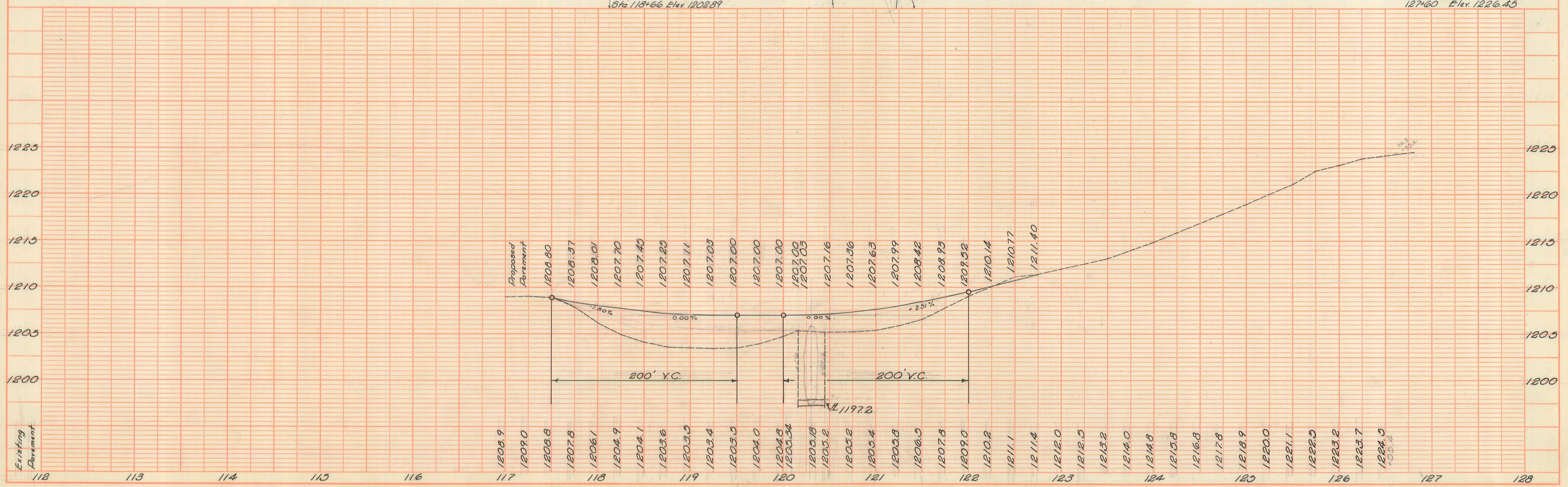
B.M.
R.R. Spike in 30"
Maple 25' Rt. of
Sta. 118+66 Elev. 1208.89

B.M.
R.R. Spike in E. side
of 15' Elm. Lt. of Sta.
127+60 Elev. 1226.45

PLAN
DATE
BY
SUMMITTED
NOTE BOOK, ALIGNMENT CHECKED,
NO. RT. OF WAY CHECKED.

BR NO 56-4.05
2.27

PROFILE
DATE
BY
SUMMITTED
NOTE BOOK, GRADES CHECKED,
NO. B.M. NOTED,
NO. PROPOSED (FOR THIS OHIO)



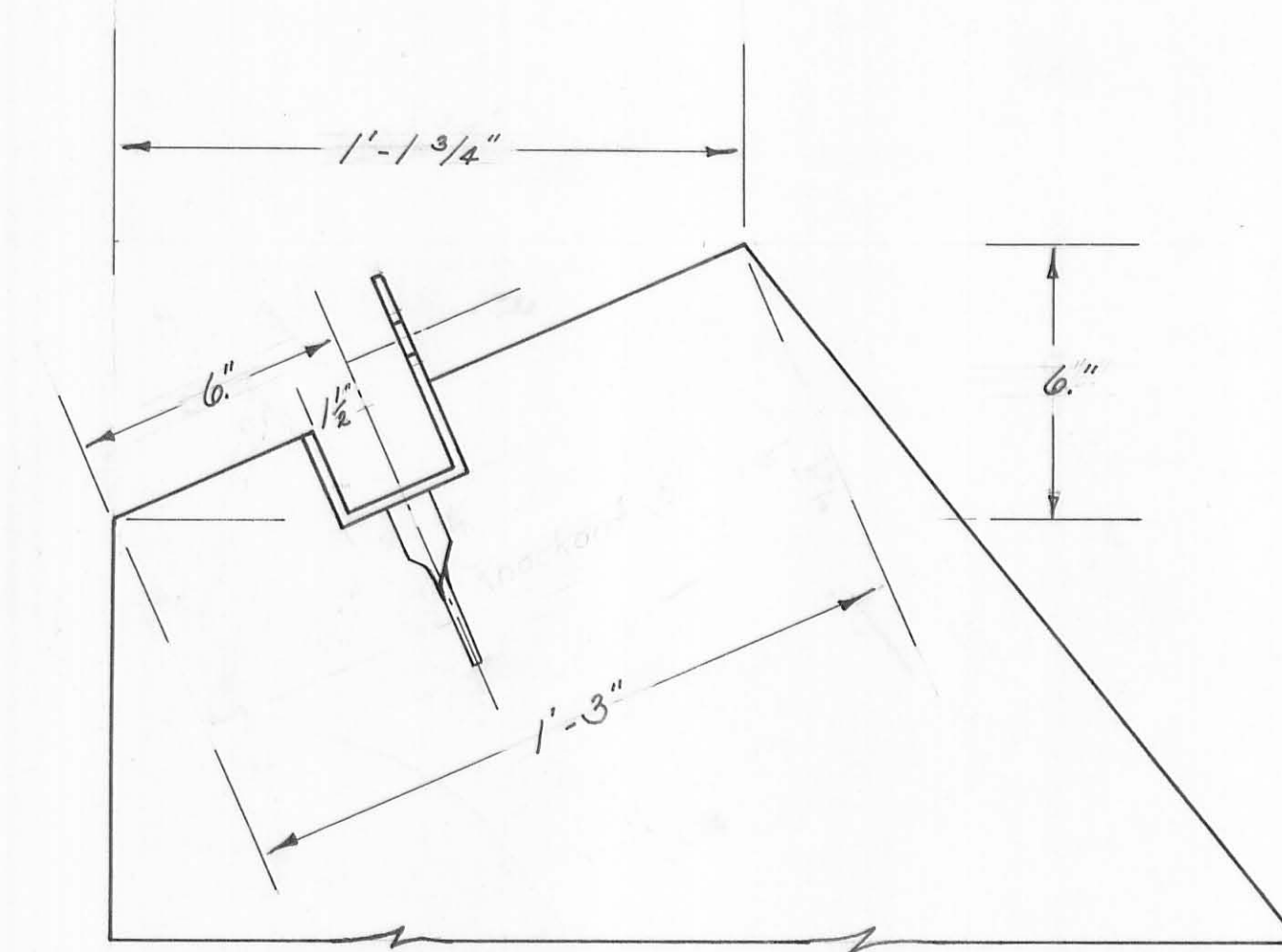
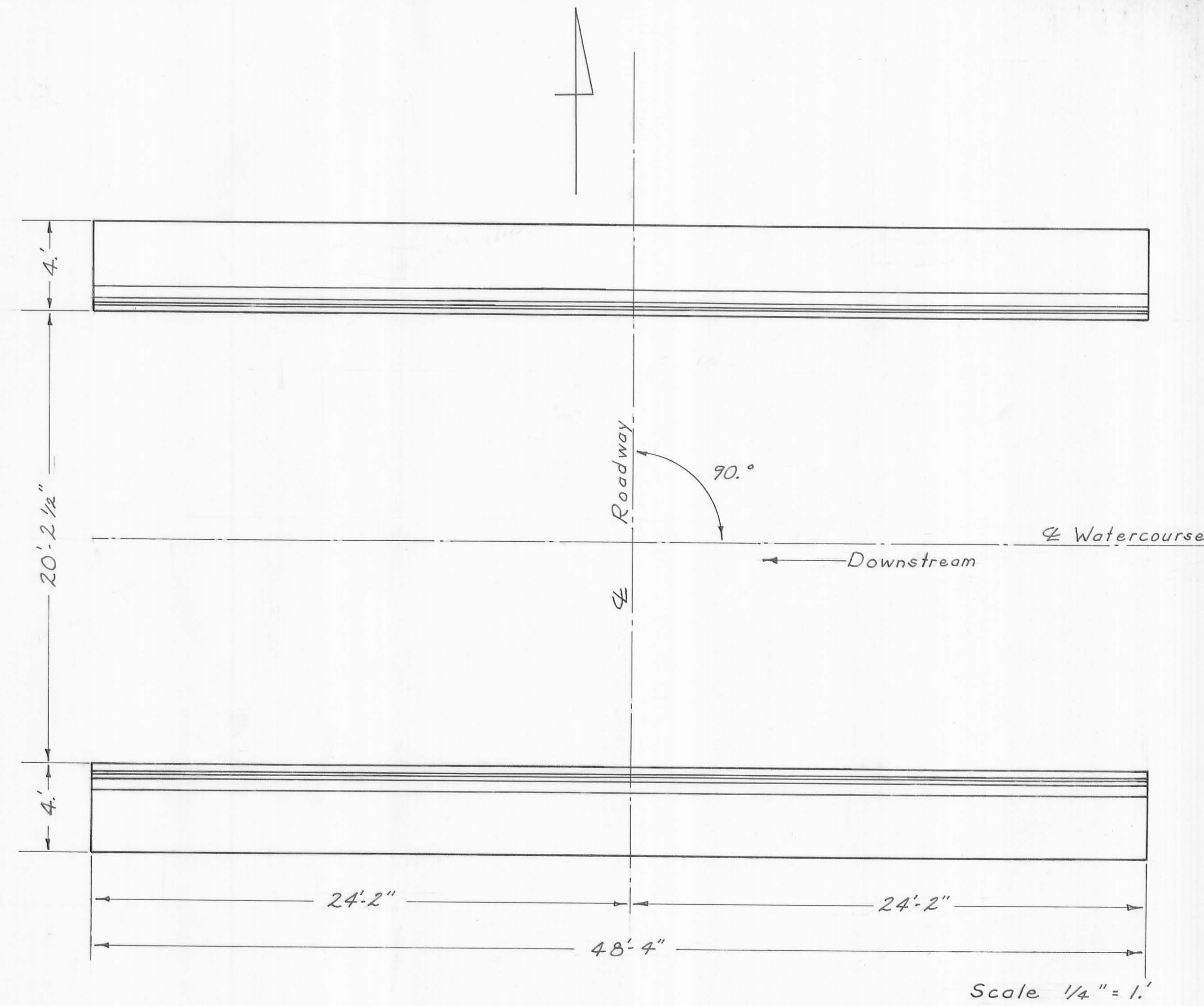
BRIDGE NO. 56-4.05

CHEROKEE MANS RUN

Mac ARTHUR TOWNSHIP

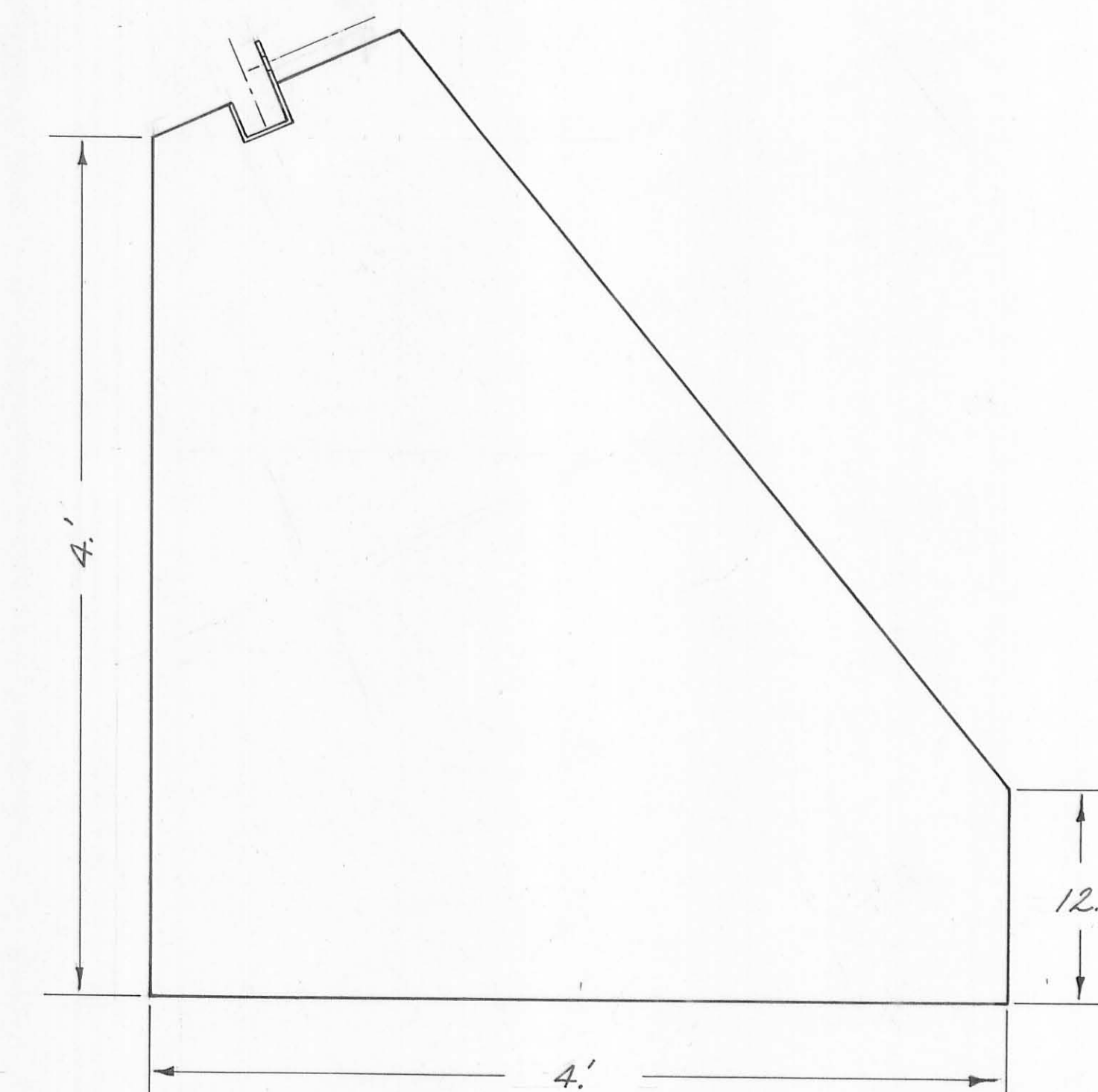
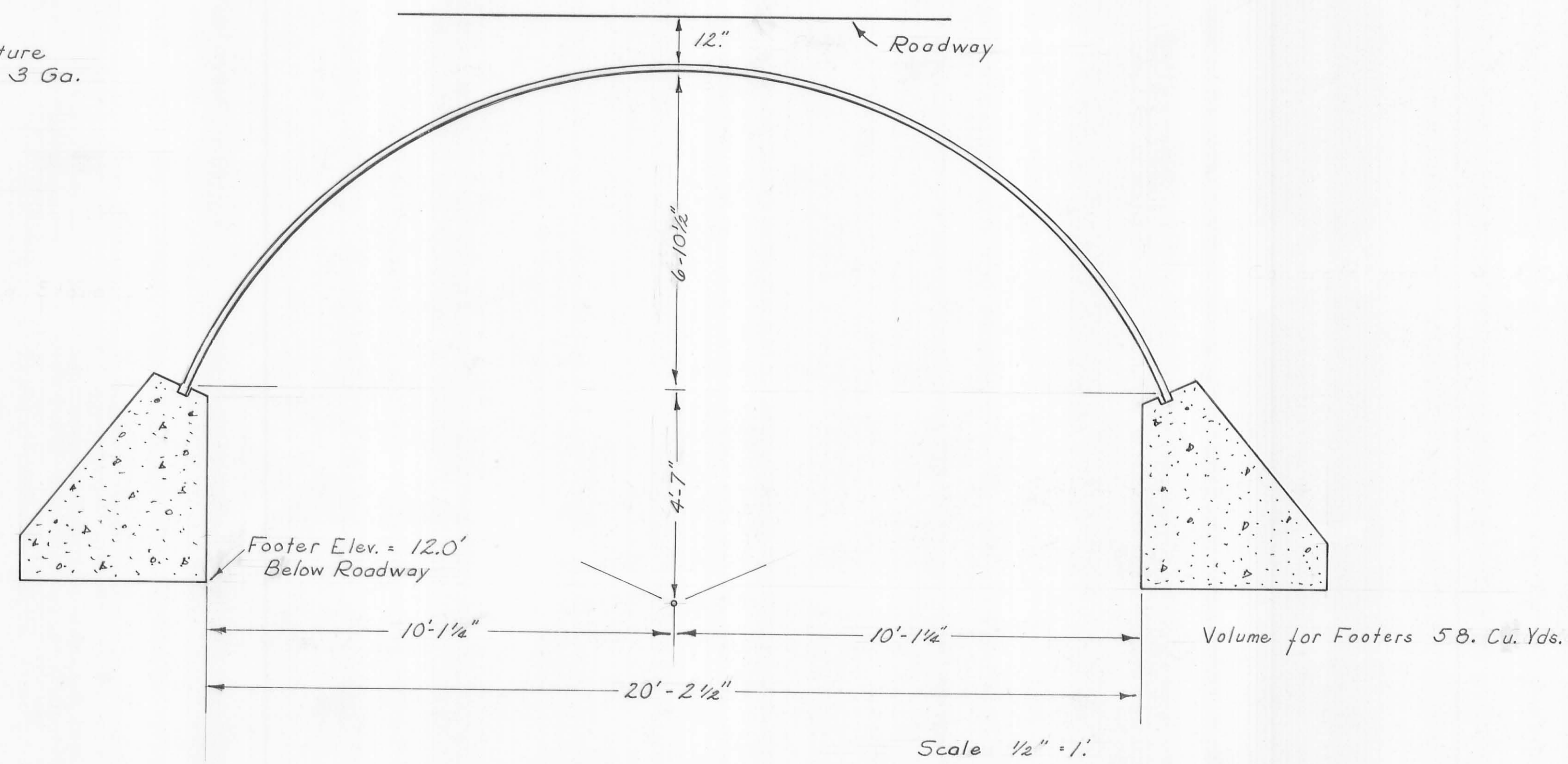
LOGAN COUNTY, OHIO

1968



Scale 3." = 1.'

Proposed Structure
 Type - Sec. Pl. Arch 3 Ga.
 Span 21'-0"
 Rise 6'-10 1/2"
 Length 48'-0"



Scale 1 1/2" = 1.'