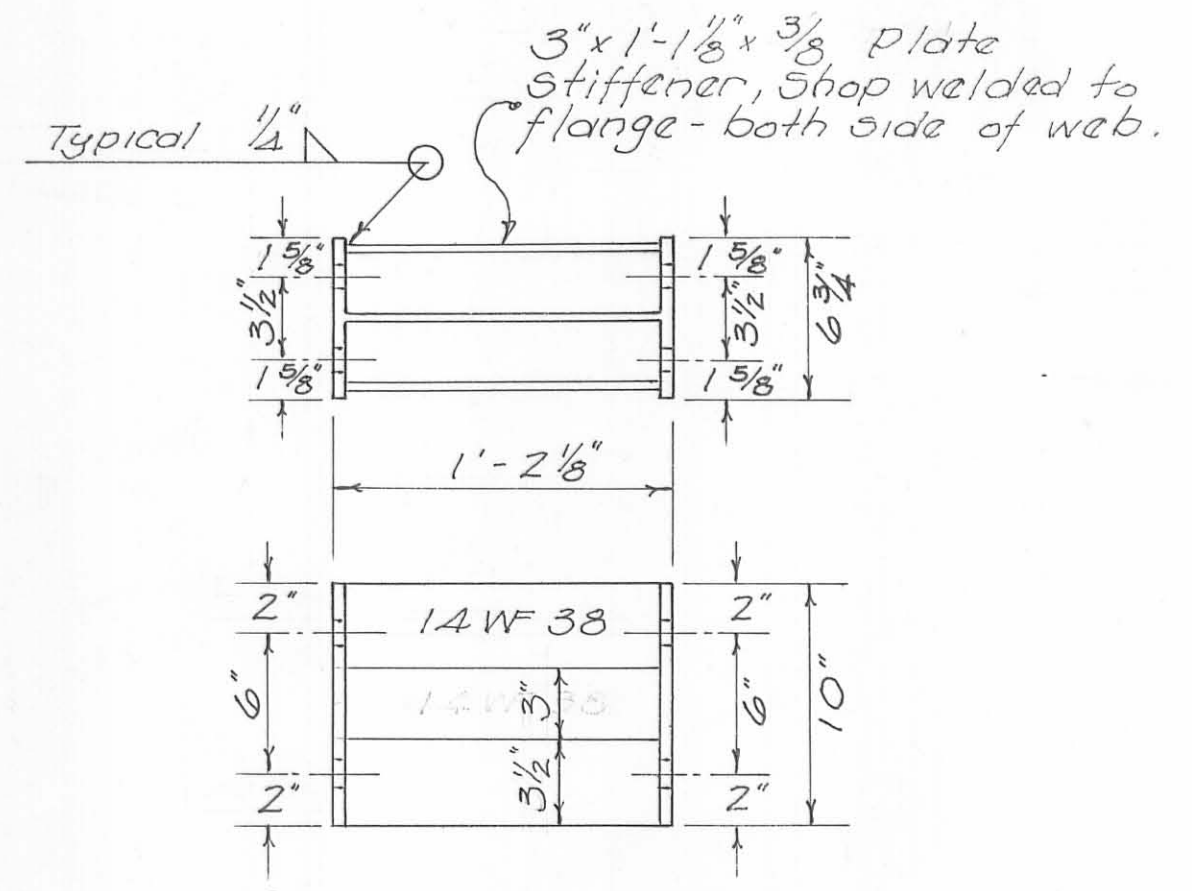
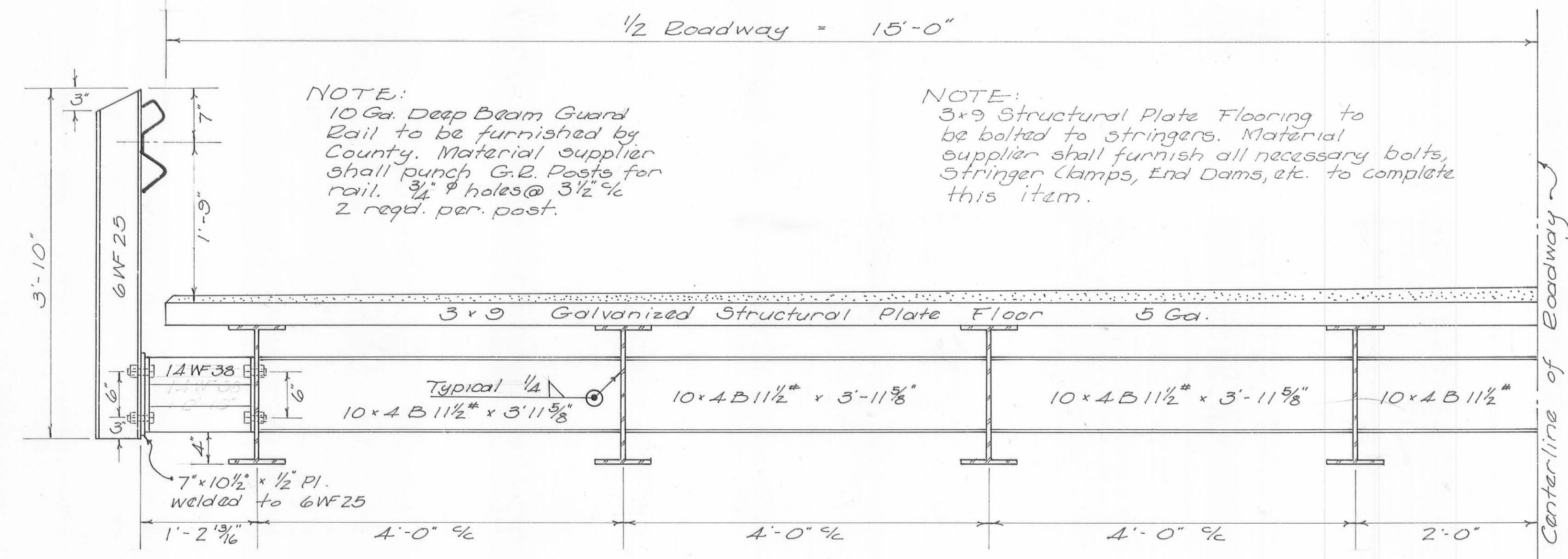


SUPERSTRUCTURE MATERIAL LIST				
ITEM No.	SHAPE	No. Pcs.	LENGTH	DESCRIPTION
1	18WF50	8	37'-4 1/2"	
2	18WF50	8	54'-10 1/2"	
3	10x4B@11 1/2"	56	3'-11 5/8"	Diaphragms
4	14WF38	30	0'-10"	Guard Rail Bracket
5	6x6WF25	30	3'-10"	G.R. Post (Galvanized)
6	1'-3x1'-3x 3/8"	16		Splice Plate
7	2 1/2 x 3/8" Pl.	32	1'-10"	" "
8	6 1/2 x 3/8" Pl.	8	1'-10"	" "
9	6x6x1/2 L	2	19'-1 1/2"	End Finish
10	6x6x1/2 L	2	18'-9"	" "
11	3/4" Bolt	120	2"	G.R. Bracket bolt
12	3/4" Bolt	120	2 3/4"	G.R. Post bolt
13	1" Bolt	96	2 3/4"	Splice bolt (Flange)
14	1" Bolt	128	2 1/2"	" " (Web)
	3x9 St. Pl. Floor			2768 Sq. Ft. (5 Ga.)

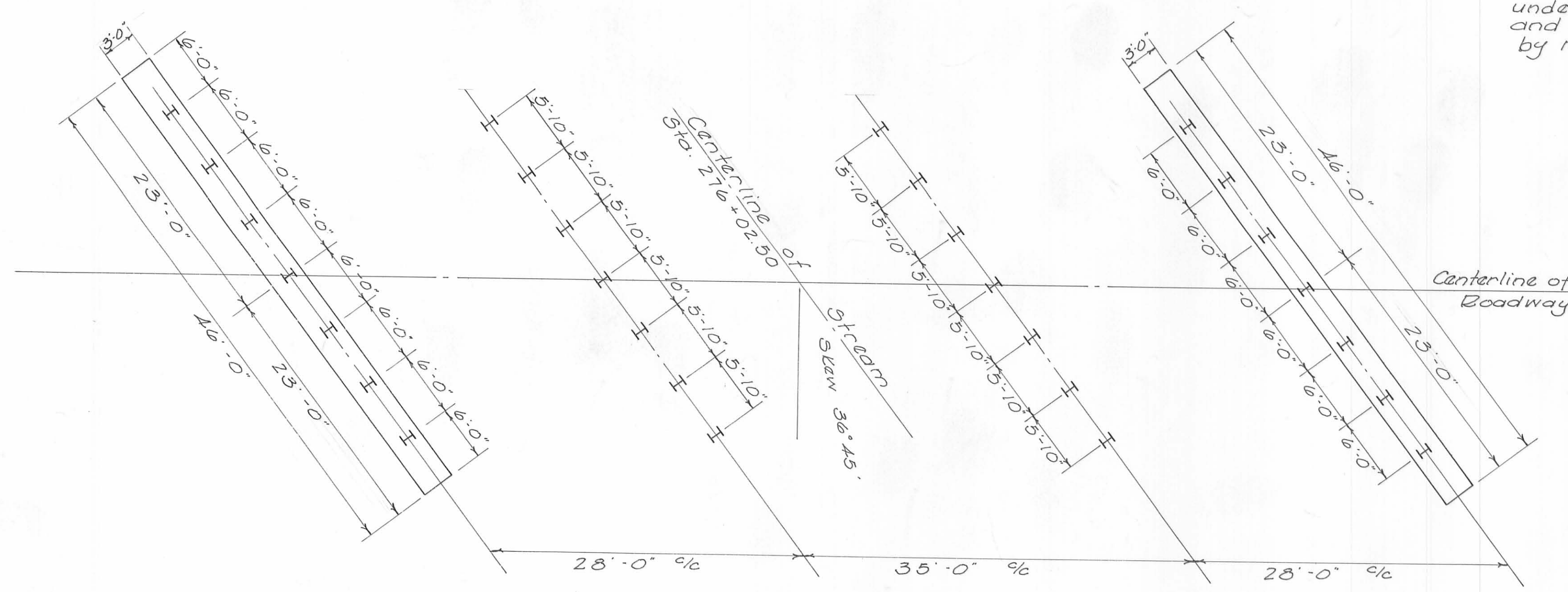


LOGAN COUNTY HIGHWAY DEPARTMENT
(HESTER R. KURTZ COUNTY ENGINEER)

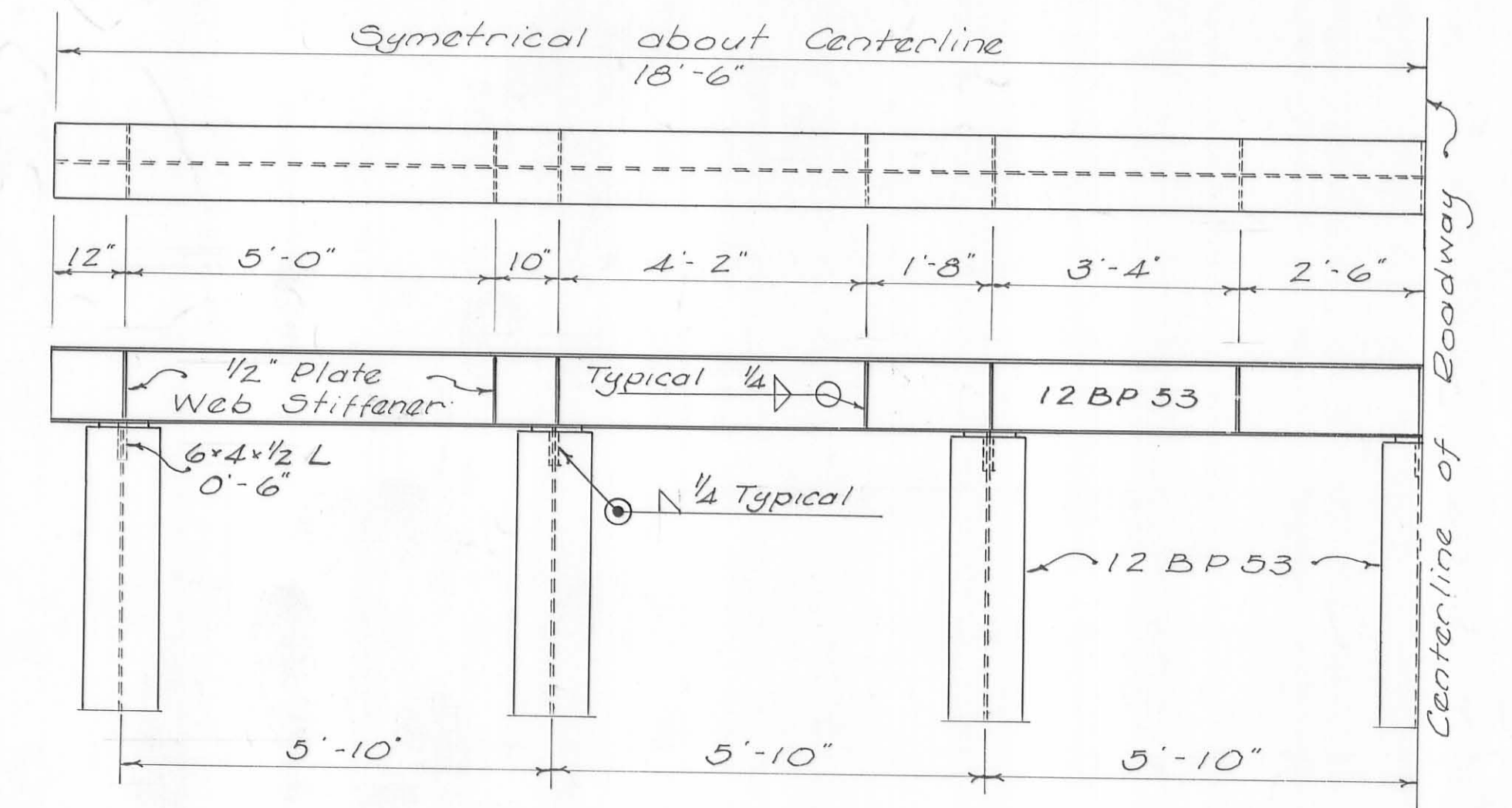
BRIDGE No. 39-6.86
OVER
MIDDLE BRANCH OF
THE GREAT MIAMI RIVER
RICHLAND TOWNSHIP
1973

DESIGN C.R.K. D.L.D.	DRAWN D.L.D.	CHECKED C.R.K.	FILE No.
----------------------------	-----------------	-------------------	----------

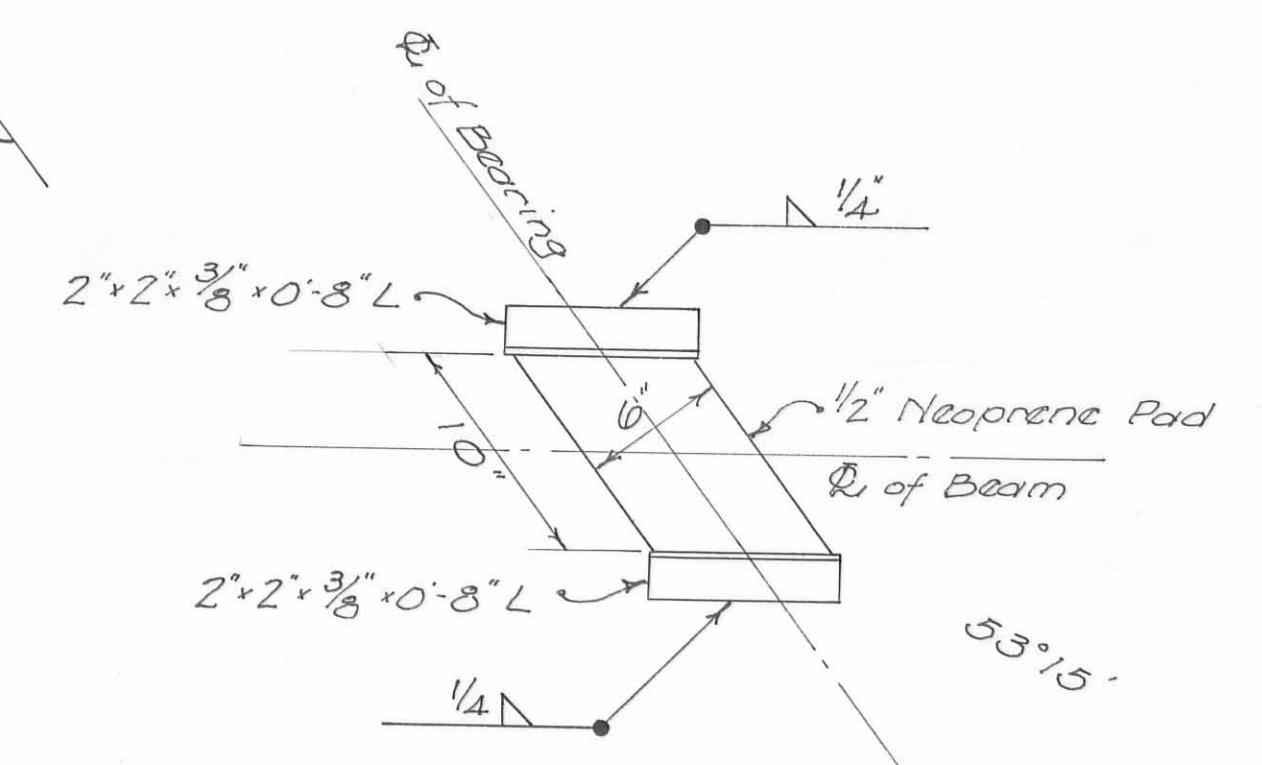
NOTE:
 10 1/8" x 5 3/4" x 1/2" pl. web stiffeners shall be placed over each pile and under each beam, as indicated, and shall be shop welded in place by material supplier.



PILING PLAN
 1/8" = 1'

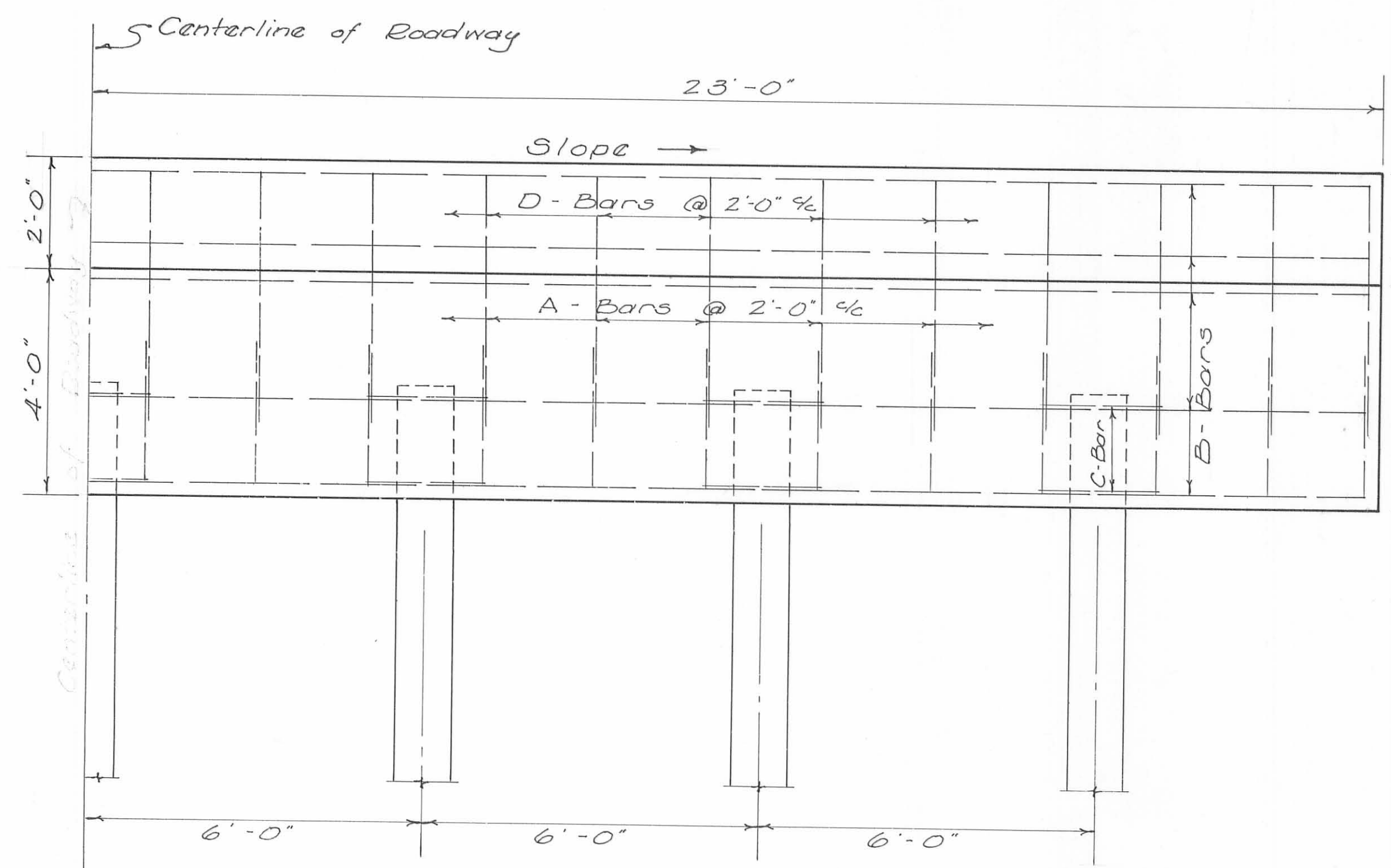


PIER HALF ELEVATION
 1/2" = 1'

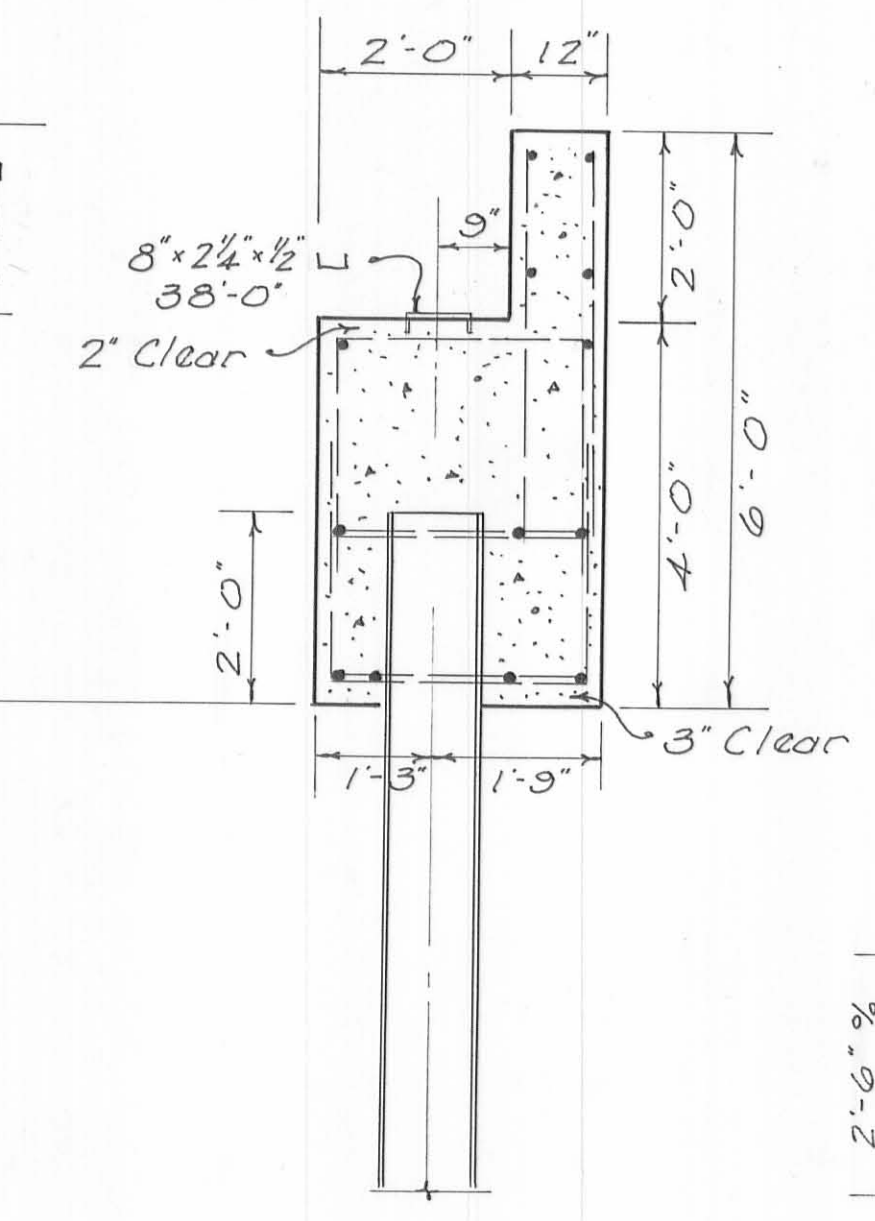


BEARING DETAIL
 1 1/2" = 1'

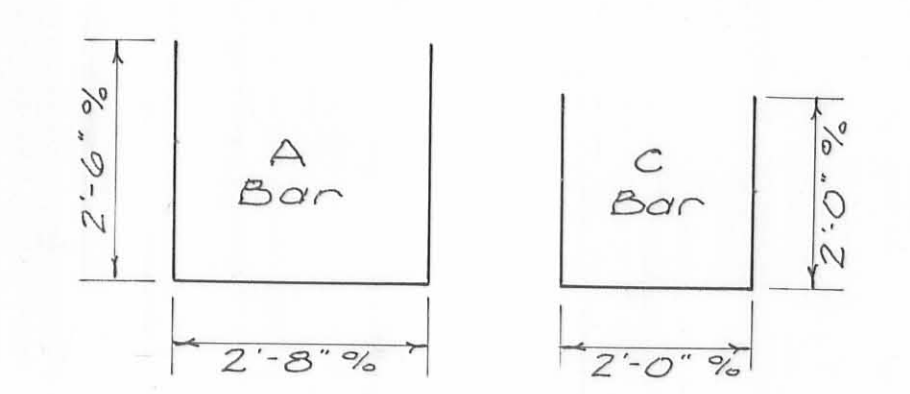
SUBSTRUCTURE MATERIAL LIST				
ITEM No.	SHAPE	No. Pcs.	LENGTH	DESCRIPTION
1	12 BP 53	28	30'-0"	Bearing Pile
2	12 BP 53	2	37'-0"	Piling Cap (Fabricated)
3	6 x 4 1/2 L	28	0'-6"	
4	8 x 2 1/4 x 1/2 L	2	38'-0"	Abutment Bearing
5	2 x 2 x 3/8 L	48	0'-8"	Bearing Pad Keepers
6	1/2" Neoprene Pad	24	0'-10"	Bearing Pads (Skew Cut)



HALF ELEVATION
 1/2" = 1'



SECTION ON CENTERLINE
 1/2" = 1'



LOGAN COUNTY HIGHWAY DEPARTMENT
 CHESTER R. KURTZ COUNTY ENGINEER

BRIDGE No. 39-6.86
 OVER
 MIDDLE BRANCH OF
 THE GREAT MIAMI RIVER
 RICHLAND TOWNSHIP
 1973

DESIGN C.R.K. D.L.D.	DRAWN D.L.D.	CHECKED C.R.K.	FILE No.
----------------------------	-----------------	-------------------	----------