

MICROFILMED
APR 06 1981

STATE OF OHIO
DEPARTMENT OF HIGHWAYS
C.R. 10-5.09

State Issue No. 1 Funds

FED. RD. DIVISION	STATE	PROJECT	
		State Issue No. 1	

1
15

LOGAN COUNTY
COUNTY RD. 10-5.09

CONVENTIONAL SIGNS

- PROPERTY LINE
- FENCE LINE
- CENTER LINE
- POLE LINE
- HEDGE
- DRAIN PIPE (NEW)
- DRAIN PIPE (OLD)
- GUARD RAIL (NEW)
- GUARD RAIL (OLD)
- TREES & STUMPS (REMOVE)
- R/W LINE (PROPOSED)

LINE DATA

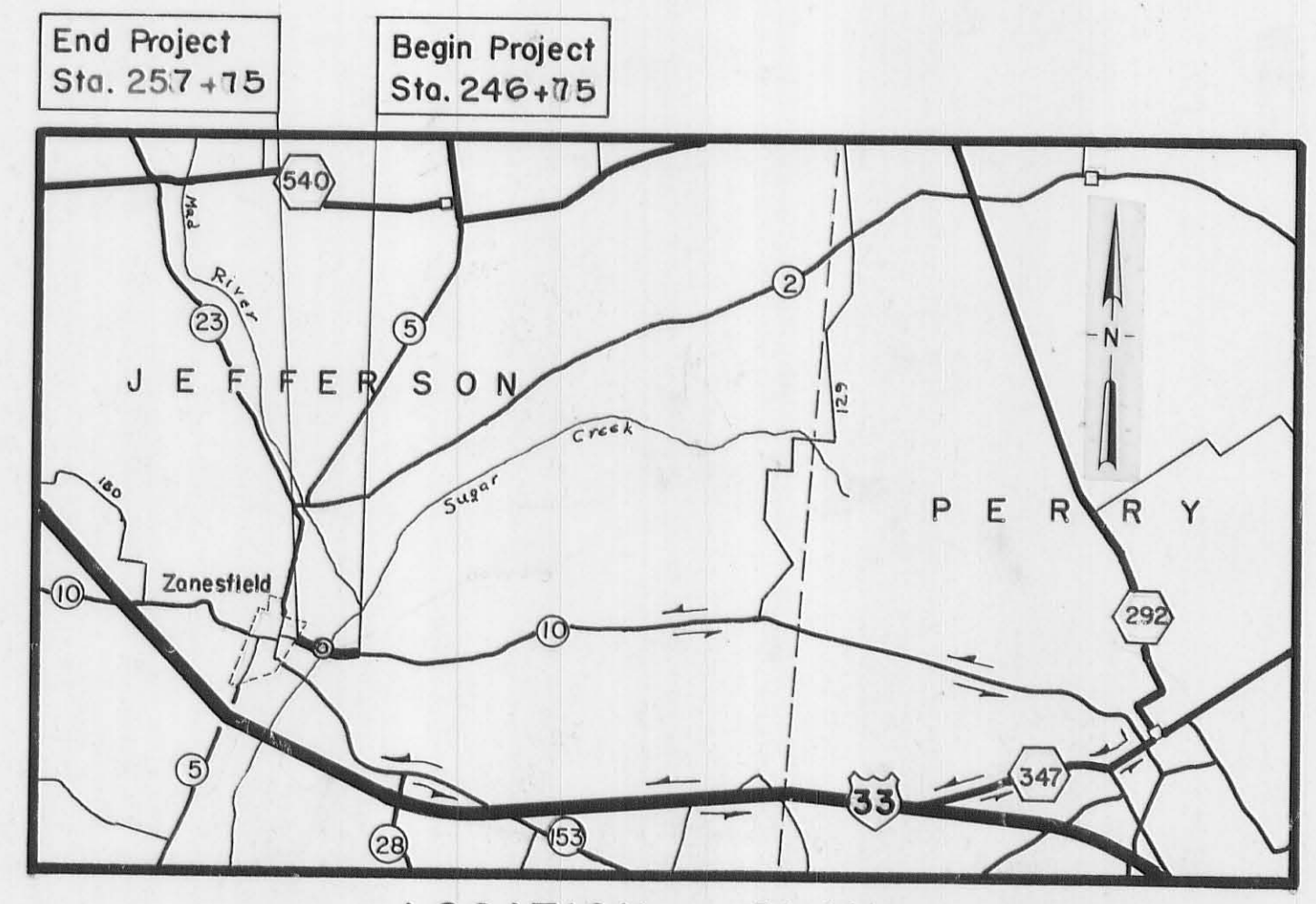
BEGIN PROJECT	STA. 246+75
BEGIN WORK	STA. 246+00
END PROJECT	STA. 257+75
END WORK	STA. 258+00
DEDUCT STA. EQUATION	12.49 LIN. FT.
NET LENGTH OF PROJECT	1087.51 LIN. FT. OR 0.205 MILE
NET LENGTH OF WORK	1187.51 LIN. FT. OR 0.224 MILE

INDEX OF SHEETS

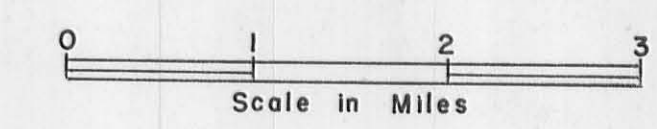
TITLE SHEET	1
TYPICAL SECTION	2
GENERAL NOTES	3
GENERAL SUMMARY	4
PLAN & PROFILE	5
CROSS SECTIONS	6-8
STRUCTURE OVER 20' SPAN	9-13
CHANNEL SECTIONS	14
RIGHT OF WAY	15

LOGAN COUNTY

JEFFERSON TOWNSHIP



LOCATION PLAN



DETOUR

SCALES

- PLAN
- PROFILE (HORIZONTAL)
- PROFILE (VERTICAL)
- CROSS SECTIONS (HORIZONTAL)
- CROSS SECTIONS (VERTICAL)

STANDARD DRAWINGS					
Drawing	Date	Drawing	Date	SUPPLEMENTAL SPECIFICATIONS	Date
BP-5	6-1-65				
BP-6	6/1/65	MC-4	6-13-69		
MC-3	6/20/69	P-1-54	11/8/65	808	11-14-69
GR-2A	1/1/67	A-1-54	11/8/65	836	6-17-69
GR-1a	1-1-67	CS-1-65	6/1/65	938	8-12-69
L-1	6-1-65	F-2	3-10-69	1001	1-1-69
F-6	10-1-66	F-1	3-10-69		

1970 SPECIFICATIONS

The standard specifications of the state of Ohio, Department of Highways, including changes and supplemental specifications listed in the proposal shall govern this improvement.

The right-of-way for this improvement will be provided by the County of Logan.

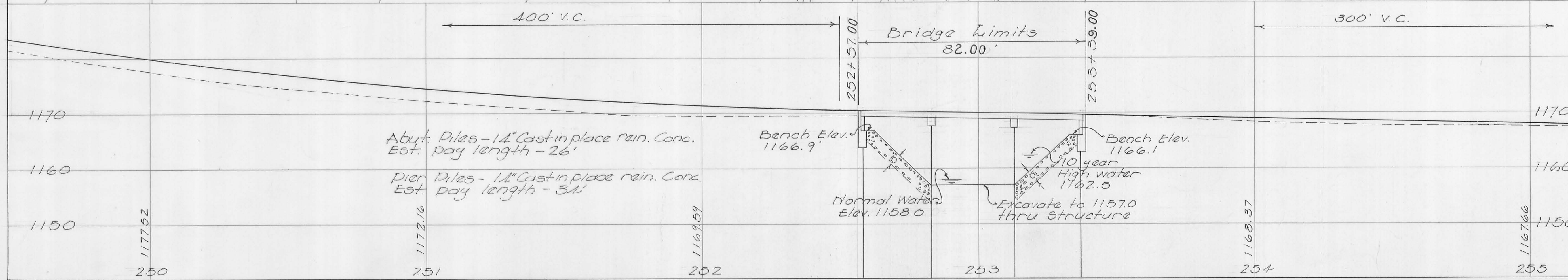
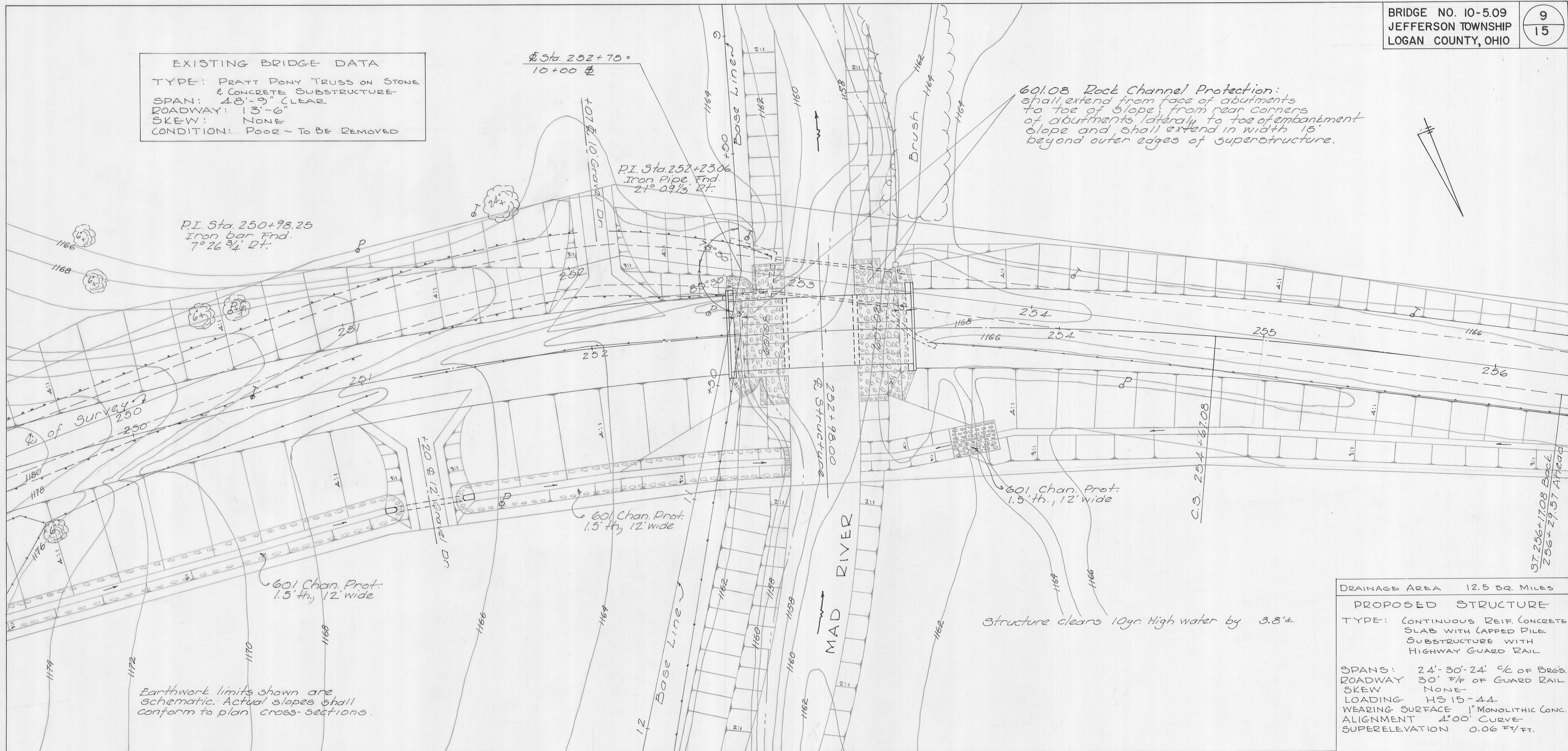
I hereby approve these plans and declare that the making of this improvement will require the closing of the highway to traffic, and that detours will be provided as indicated on the plans.

- APPROVED DATE 6-18-70
DIVISION DEPUTY DIRECTOR
- APPROVED DATE 6-30-70
ENGINEER OF BRIDGES
- APPROVED DATE 7-1-70
ENGINEER OF LOCATION & DESIGN
- APPROVED DATE 7-1-70
DEPUTY DIRECTOR OF DESIGN & CONSTRUCTION
- APPROVED DATE _____
DEPUTY DIRECTOR OF RIGHT OF WAY
- APPROVED DATE 7-8-70
DEPUTY DIRECTOR OF PLANNING & PROGRAMMING
- APPROVED DATE 7-8-70
FIRST ASSISTANT DIRECTOR
- APPROVED DATE 7-8-70
DIRECTOR OF HIGHWAYS
- APPROVED DATE MAY 14, 1970
LOGAN COUNTY ENGINEER
- APPROVED DATE MAY 15, 1970

LOGAN COUNTY COMMISSIONERS

FILE NUMBER	Logan County	LOG-CO. RD. 10
DATE OF LETTING	_____	
CONTRACT NO.	_____	

EXISTING BRIDGE DATA
 TYPE: PRATT PONY TRUSS ON STONE
 & CONCRETE SUBSTRUCTURE
 SPAN: 48'-9" CLEAR
 ROADWAY: 13'-6"
 SKEW: NONE
 CONDITION: POOR - TO BE REMOVED



DRAINAGE AREA 12.5 SQ. MILES

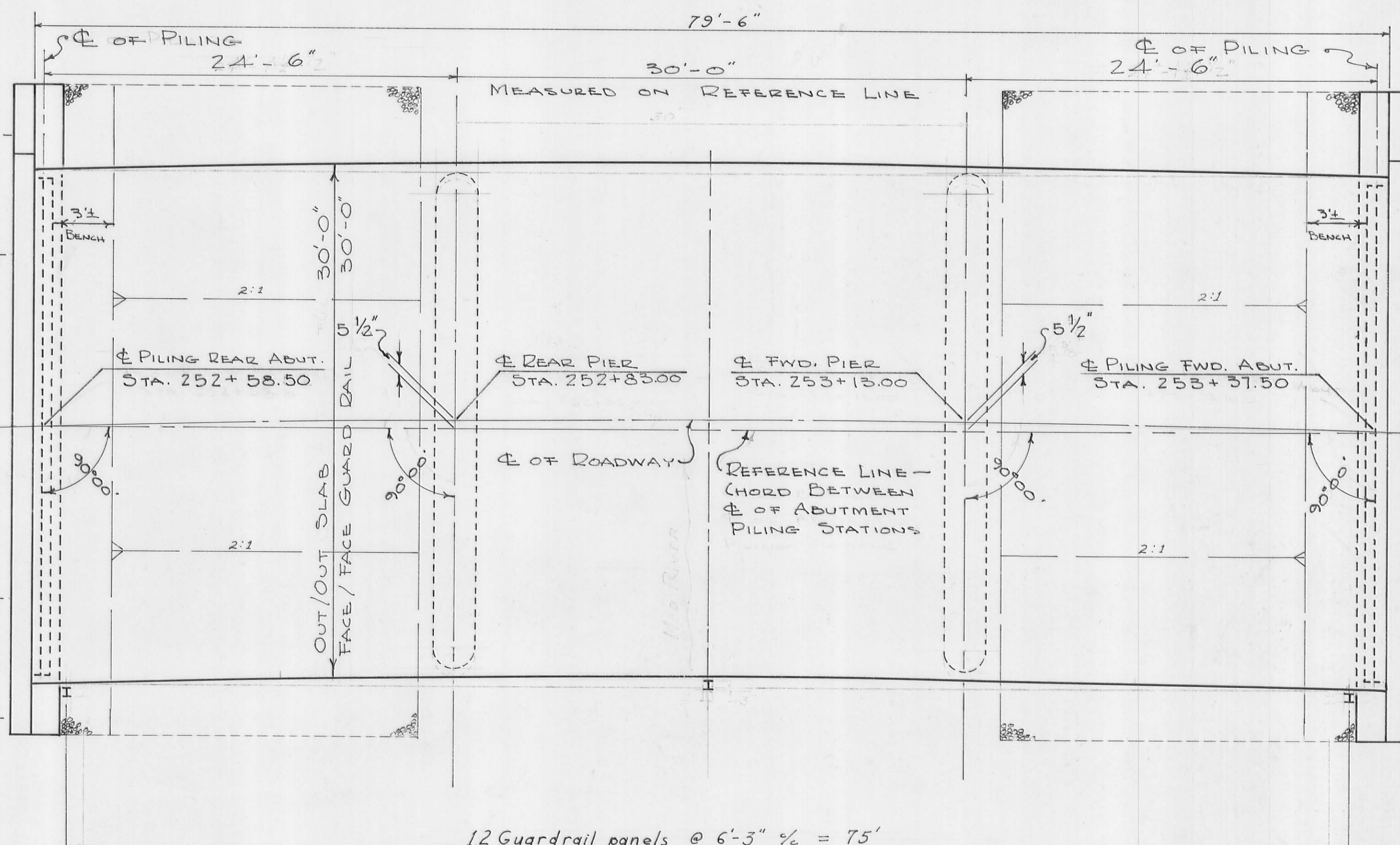
PROPOSED STRUCTURE
 TYPE: CONTINUOUS REIF. CONCRETE SLAB WITH CAPPED PILE SUBSTRUCTURE WITH HIGHWAY GUARD RAIL

SPANS: 24'-30'-24' % OF BR'S.
 ROADWAY 30' F/F OF GUARD RAIL
 SKEW NONE
 LOADING HS 15-44
 WEARING SURFACE 1" MONOLITHIC CONC.
 ALIGNMENT 1°00' CURVE
 SUPERELEVATION 0.06 FT/FT.

LOGAN COUNTY HIGHWAY DEPT. 1/5
 CHESTER R. KURTZ CO. ENGINEER

SITE PLAN
 BRIDGE No. 10-5.09
 OVER
 MAD RIVER
 JEFFERSON TOWNSHIP
 STA. 253+57.12 TO STA. 254+38.88

DESIGNED F.D.R. D.L.D.	DRAWN D.L.D.	CHECKED C.R.K.	REVIEWED	REVISED 6-3-70
------------------------------	-----------------	-------------------	----------	-------------------



GENERAL PLAN

scale: $\frac{1}{4}$ " = 1'

UTILITY LINES: All expense involved in relocating the affected utility lines shall be borne by the Owners. The Contractor and the Owners are requested to cooperate by arranging their work in such a manner that inconvenience to either would be held to a minimum.

ESTIMATED QUANTITIES (Carried to Sht. No. 4)

ITEM	TOTAL	UNIT	DESCRIPTION	SUPER.	ABUT.	PIER	GEN'L
503	126	CU.YDS.	UNCLASSIFIED EXCAVATION		126		
505		LUMP	FIRST TEST PILE				LUMP
507	720	LIN.FT.	14" CAST IN PLACE REINFORCED CONC. PILE		312	408	
509	32525	LBS.	REINFORCING STEEL	25014	4471	3040	
511	101	CU.YD.	CLASS C CONCRETE	101			
517	164	LIN.FT.	RAILING (DEEP BEAM RAIL WITH STEEL POSTS & BOLTS)	164			
518	13	CU.YD.	POROUS BACKFILL		13		
601	330	CU.YD.	ROCK CHANNEL PROTECTION - "A"				330
511	112	CU.YD.	CLASS C CONCRETE	101		11	
511	50	CU.YD.	CLASS C CONCRETE		50		
202	LUMP	SUM	EXISTING STRUCTURE REMOVED				LUMP
808	101	UNITS	CHEMICAL ADMIXTURE FOR CONCRETE, TYPE A, Bor D	101			

GENERAL NOTES

Reference shall be made to standard drawings CS-1-65, Dated 6-1-65, revised 11-8-65 and P-1-54 revised 11-8-65 and supplemental specifications 808 dated 11-14-69 and 836 dated 6-17-69 (Cost included with 511 concrete) EMBANKMENT CONSTRUCTION: The embankments shall be constructed to the level of the subgrade for a minimum distance of 200 feet back of the abutments. Excavation shall then be made for the abutments and benches.

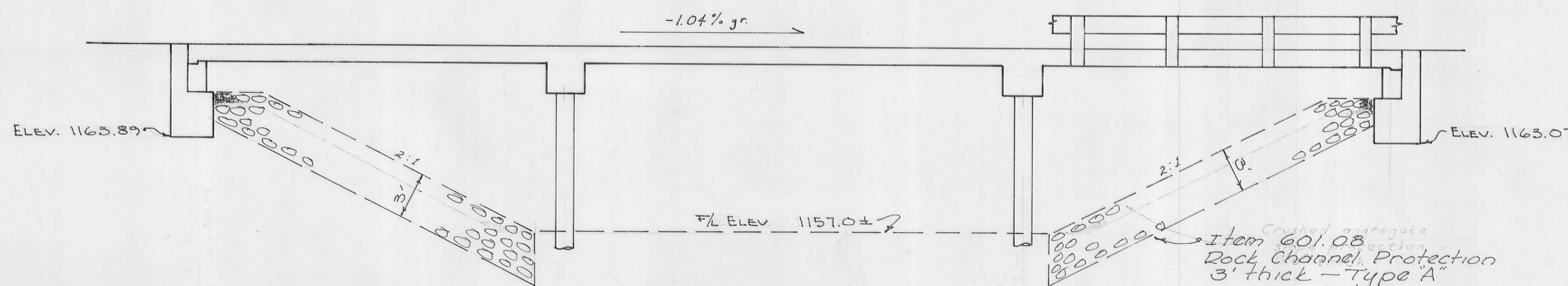
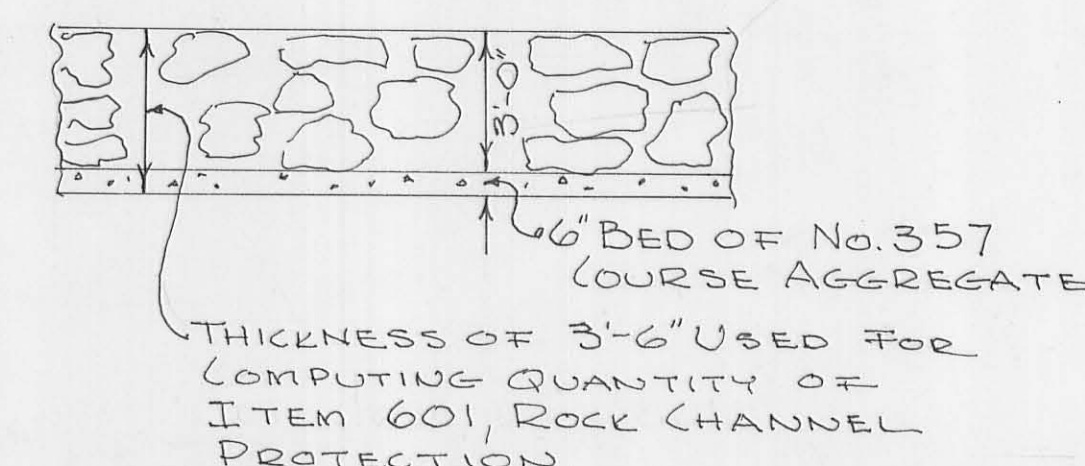
ABUTMENT EXCAVATION QUANTITY: In addition to 503.10, includes the removal of embankment above the bench.

PILES: Shall be driven to a minimum bearing capacity of 25 tons per pile for the abutments and 35 tons per pile for the piers.

PIER PILE ENCASEMENT: As shown on Standard Drawing No. P-1-54 may be omitted provided that the tapered portion, if any, of all pier piles does not extend above the stream bed. If the tapered portion of any pile extends above this limitation, the encasement will be required for all the pier piles. If the encasement is omitted the pile casings shall have a thickness of metal not less than No. 7 gage, and the painting of the piles shall extend to low water elevation.

POROUS BACKFILL: Shall extend upward to the subgrade and to the surface of the earth shoulders, and outward to the surface of the embankment slopes.

DETAIL OF ROCK CHANNEL PROTECTION TYPE A



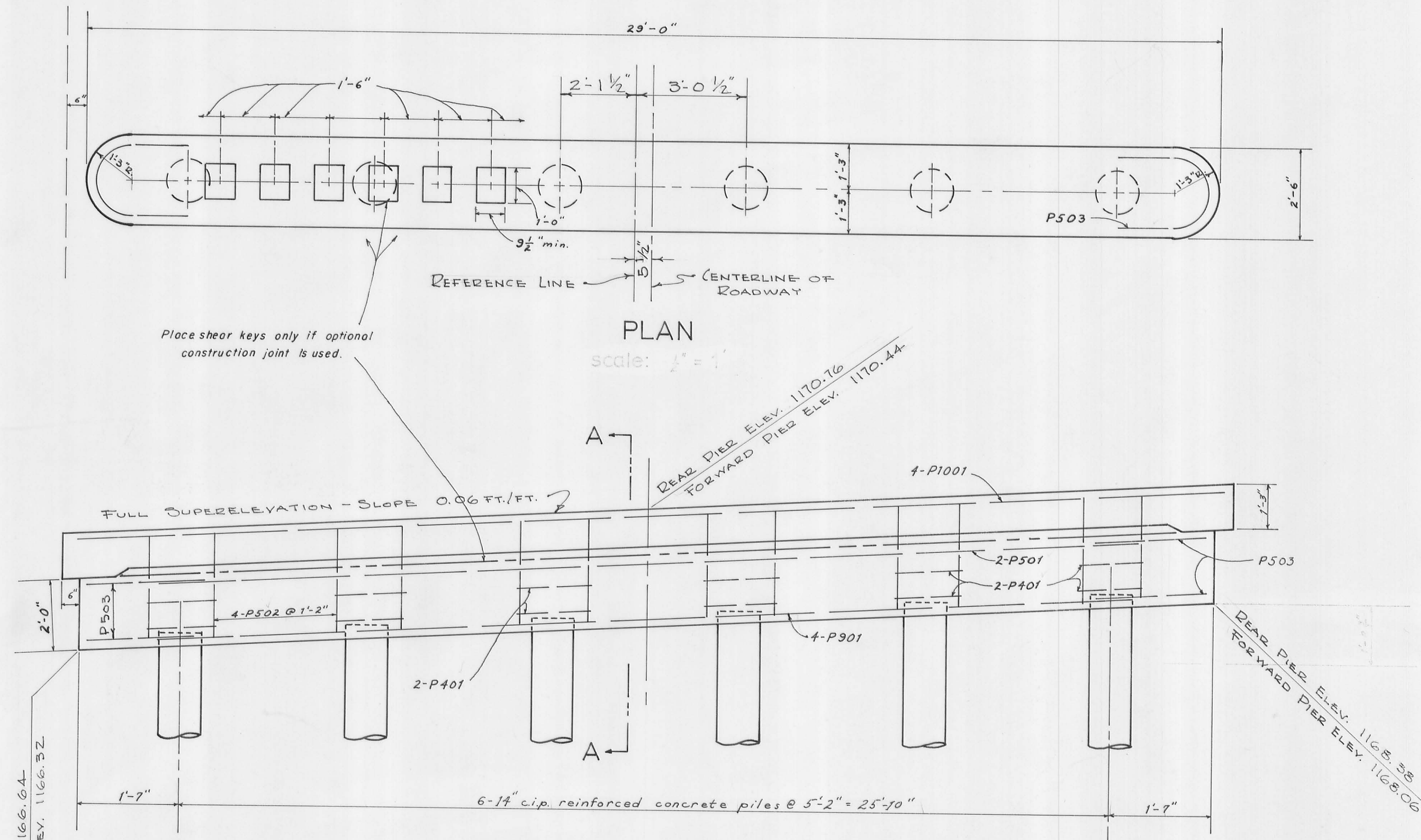
ELEVATION

scale: $\frac{1}{4}$ " = 1'

LOGAN COUNTY HIGHWAY DEPT. 2/5
Chester R. Kurtz Co. Engineer

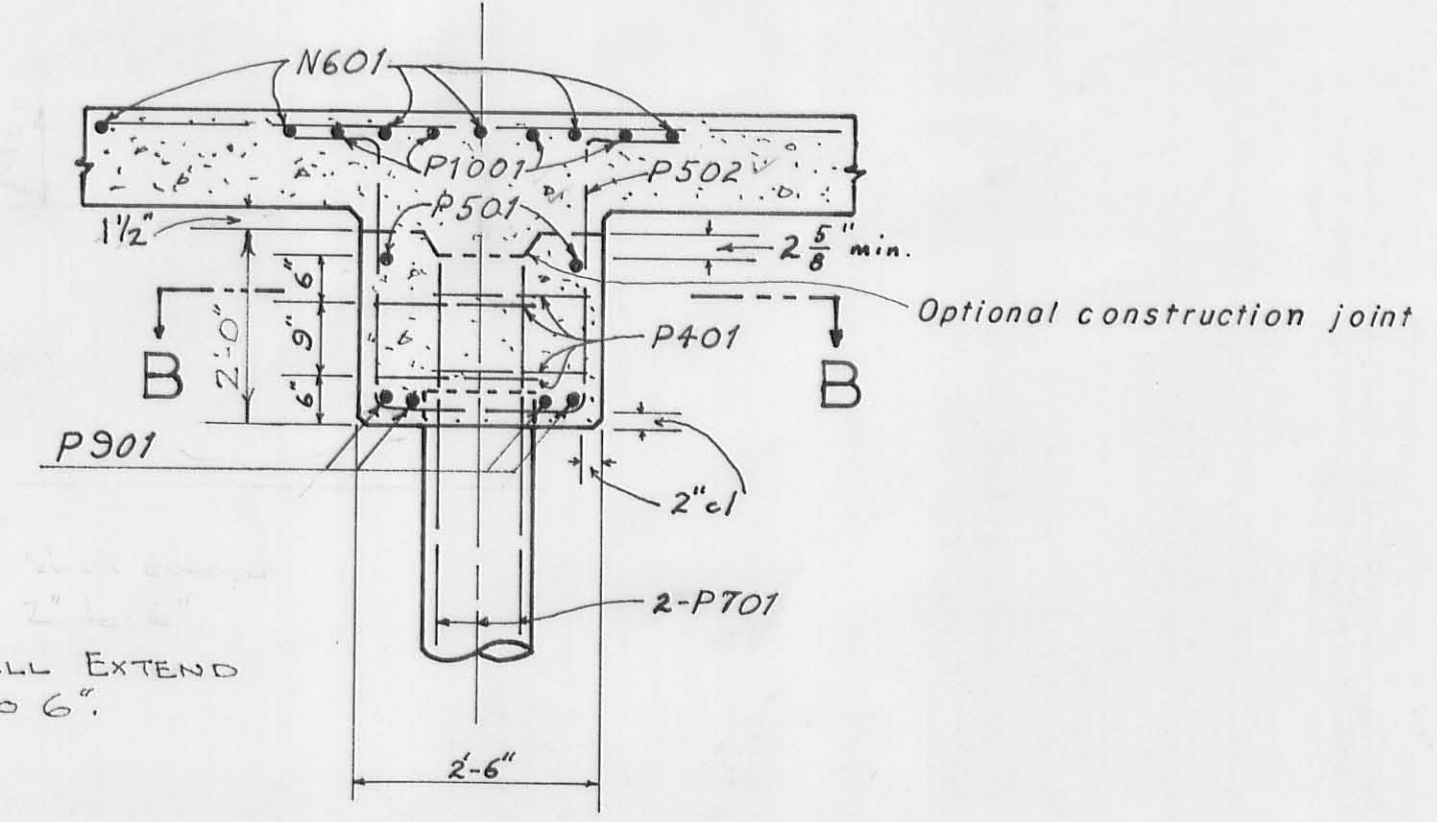
BRIDGE PLAN
BRIDGE NO. 10-5.09
over
MAD RIVER
JEFFERSON TOWNSHIP
Sta. 253+57.12 to Sta. 254+38.88

DESIGNED D.L.D.	DRAWN D.L.D. P.V.	CHECKED C.R.K.	REVIEWED	REVISED 6-3-70
--------------------	-------------------------	-------------------	----------	-------------------



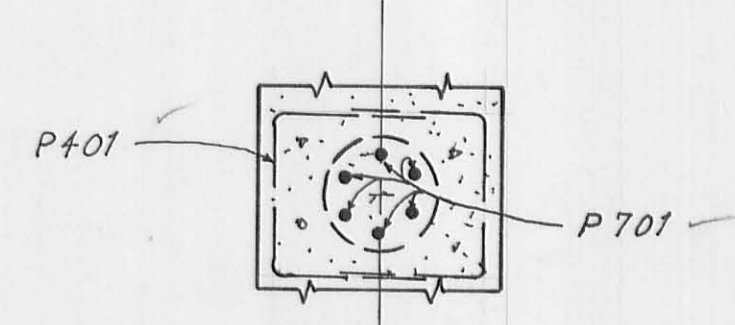
PLAN
scale: 1/4" = 1'

ELEVATION
scale: 1/4" = 1'



PILE CASING SHALL EXTEND INTO CAP 2' TO 6".

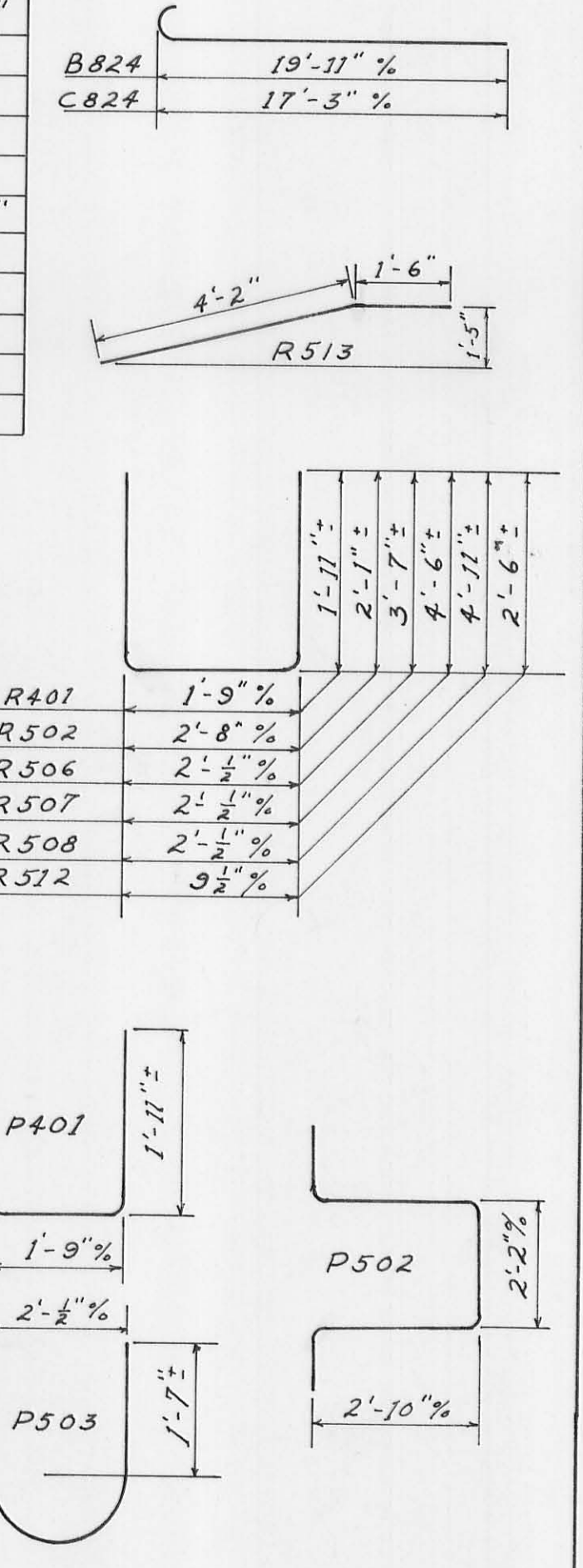
SECTION A-A



SECTION B-B

Reinforcing Steel List

MARK	NO.	LENGTH	WEIGHT	SHP	SP'G
SUPERSTRUCTURE					
A824	81	28'-1"	6073.58	S	13 1/2"
B824	28	21'-0"	1569.96	B	27"
C824	24	18'-4"	1174.80	B	27"
D824	14	19'-6"	728.91	S	27"
E824	12	15'-10"	507.30	S	27"
F924	54	21'-3"	3878.55	S	13 1/2"
G924	28	10'-6"	993.72	S	27"
H924	24	8'-2"	662.48	S	27"
J601	28	15'-3"	641.35	S	27"
K601	14	13'-10"	290.89	S	27"
M601	80	29'-6"	3544.72	S	13"
N601	54	29'-6"	2392.69	S	
ABUTMENTS					
R1001	16	15'-7"	1062.47	S	
R801	16	20'-0"	859.40	S	
R501	16	20'-0"	333.76	S	
R502	104	6'-7"	714.11	B	
R503	8	15'-1"	125.86	S	
R504	12	4'-0"	50.06	S	
R505	16	5'-6"	91.78	S	
R506	12	3'-2 1/2"	115.25	B	
R507	16	11'-2 1/2"	184.26	B	
R508	12	11'-10 1/2"	148.63	B	
R509	8	17'-3"	143.93	S	
R510	8	4'-6"	37.55	S	
R511	8	6'-6"	54.24	S	
R512	40	6'-9 1/2"	283.34	B	
R513	4	5'-8"	23.64	S	
R401	48	5'-5"	271.18	B	
PIERS					
P1001	8	29'-6"	984.59	S	
P901	8	26'-6"	716.56	S	
P701	72	4'-0"	588.67	S	
P501	4	26'-6"	110.56	S	
P502	44	9'-0"	473.03	B	
P503	8	6'-4"	52.85	B	
P401	48	5'-5"	173.68	B	
REPLACEMENT BARS					
R1001	1	8'-9"		S	
F924	1	8'-0"		S	
A824	1	7'-6"		S	
P701	1	7'-6"		S	
M601	1	7'-0"		S	
R-502	1	7'-0"		S	
R-401	1			B	

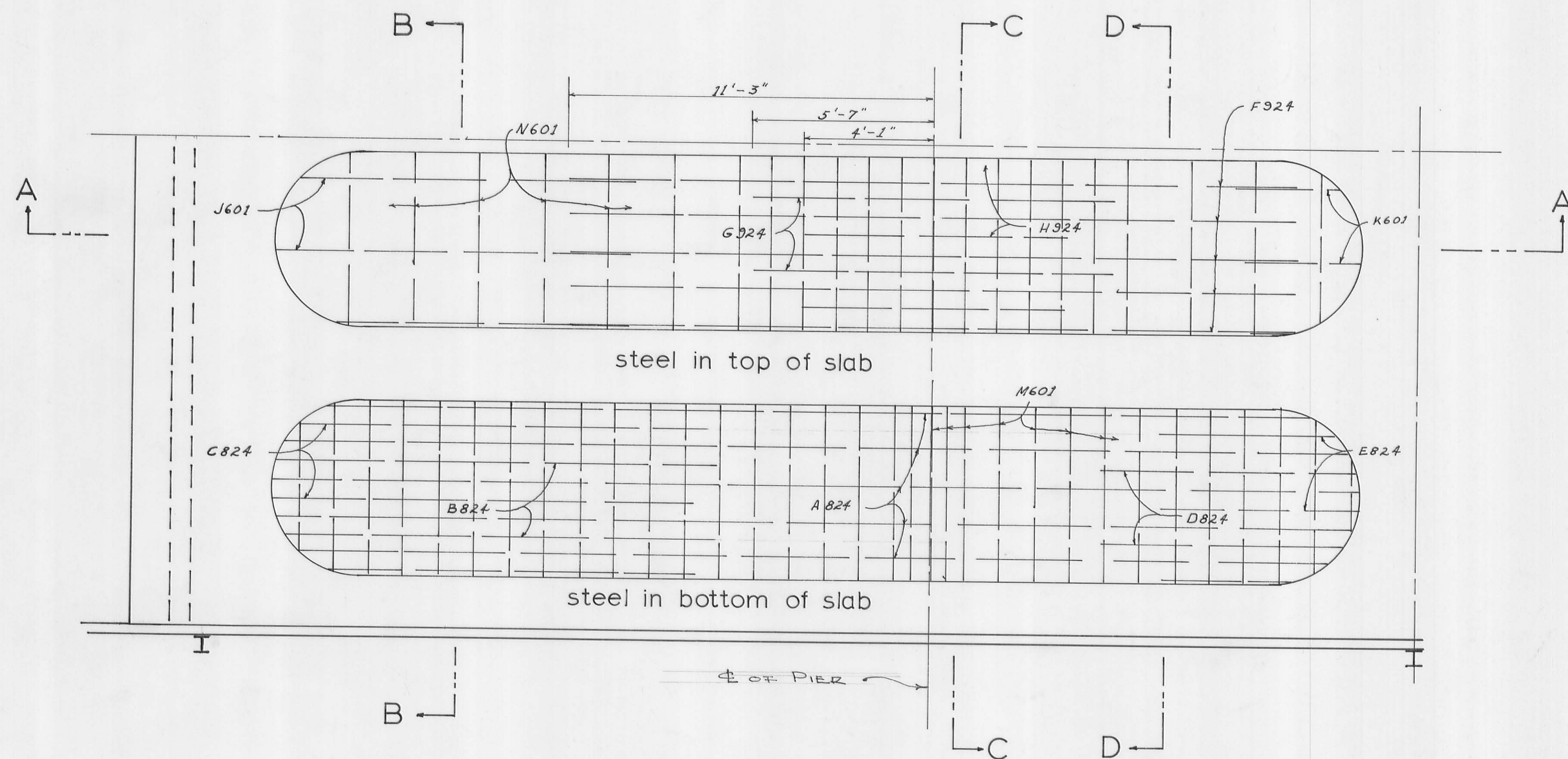


Bar Size is indicated in bar mark. The first digit where three digits are used, and the first two digits where four are used, indicate the bar size number. For example, A700 is a No. 7 size bar and A1014 is a No. 10 size.

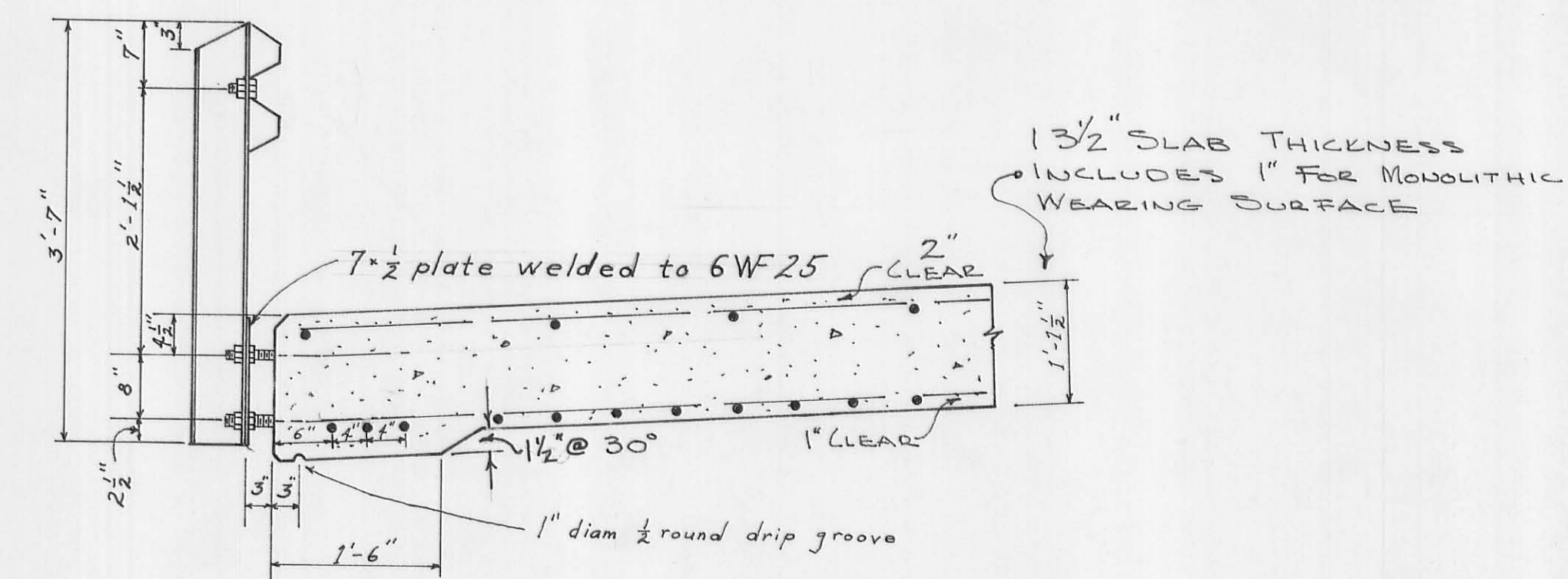
LOGAN COUNTY HIGHWAY DEPT. 4/5
Chester R. Kurtz Co. Engineer

PIER PLAN
BRIDGE NO. 10-5.09
over
MAD RIVER
JEFFERSON TOWNSHIP
Sta.253+57.12 to Sta.254+38.88

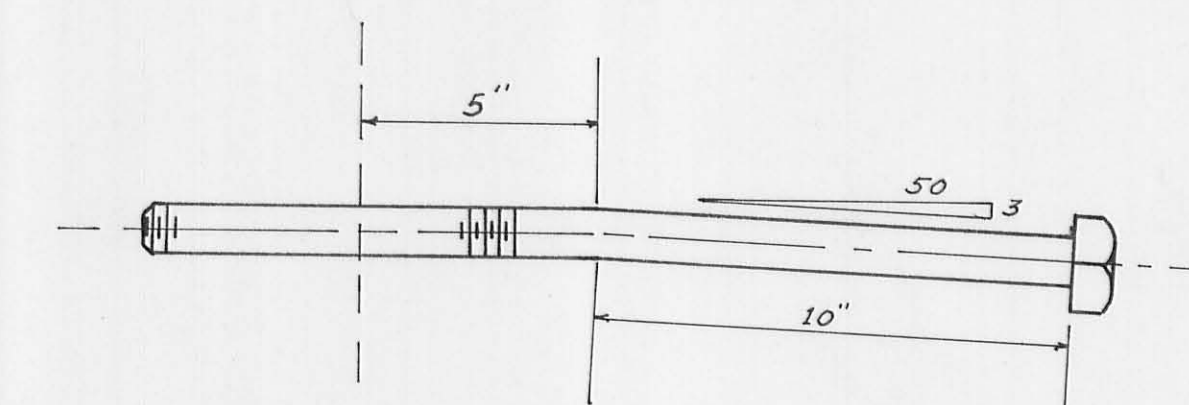
DESIGNED F.D.R.	DRAWN F.D.R.	CHECKED D.L.D.	REVIEWED	REVISED 6-3-70
--------------------	-----------------	-------------------	----------	-------------------



PART PLAN
 scale: $\frac{3}{8}'' = 1'$

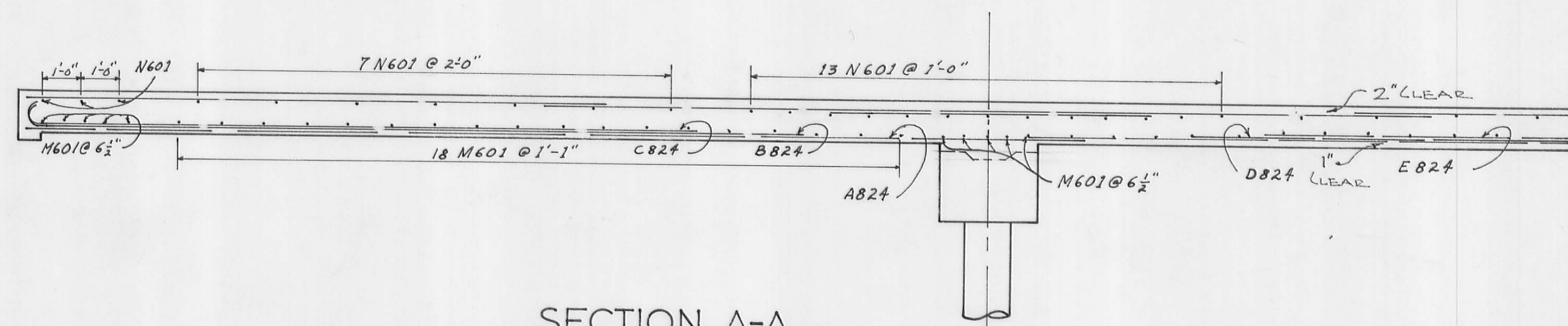


EDGE BEAM DETAIL

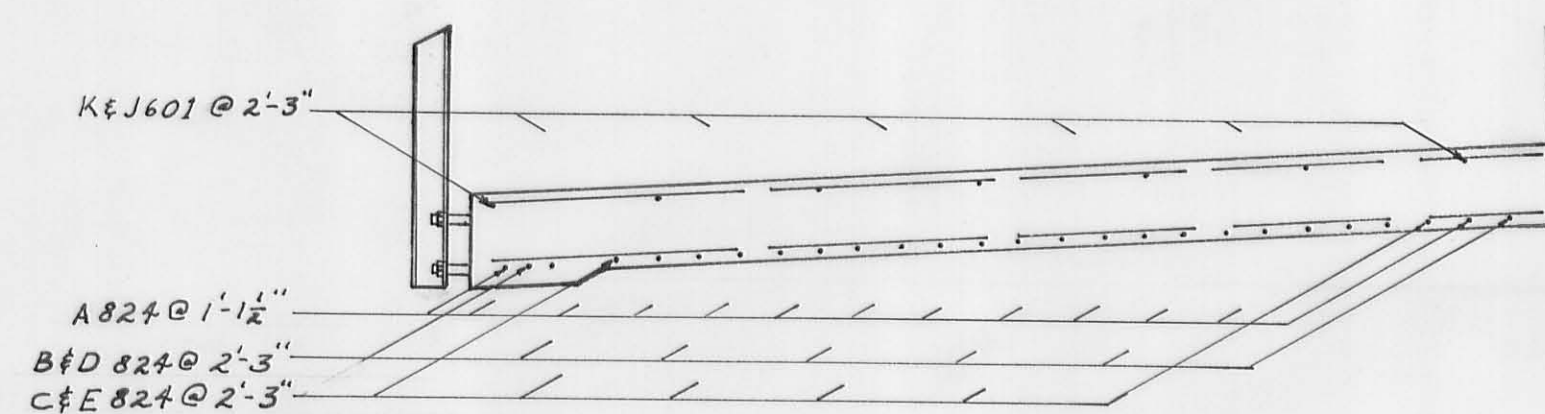


ANCHOR BOLT DETAIL

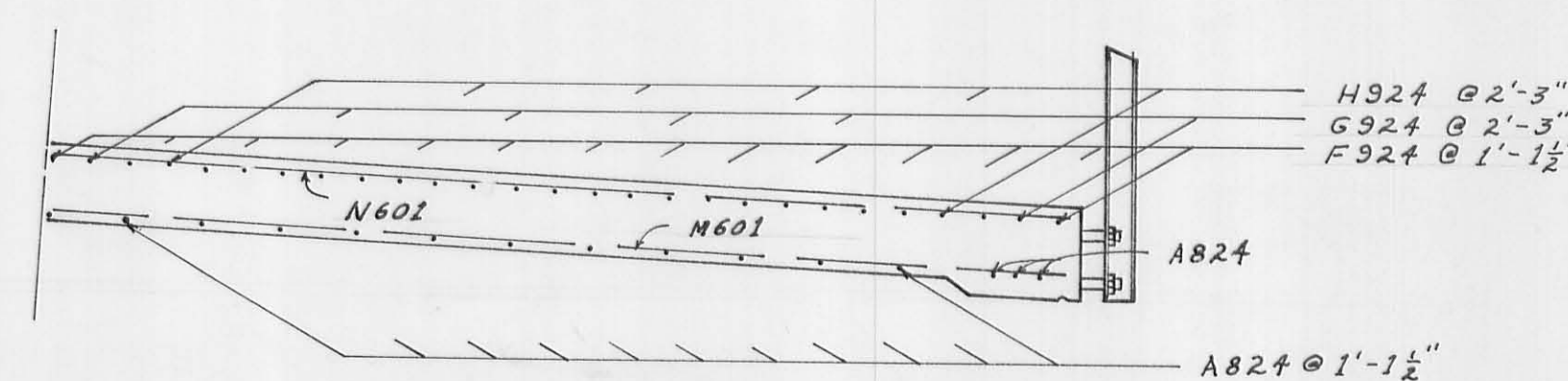
1 1/2" x 20" galvanized machine bolts
 Thread 8" length, provide three
 galvanized hexagonal nuts per bolt.



SECTION A-A



SECTION B-B & D-D



SECTION C-C

LOGAN COUNTY HIGHWAY DEPT. 5/5
 Chester R. Kurtz Co. Engineer

DECK PLAN
 BRIDGE No. 10-5.09
 over
 MAD RIVER
 JEFFERSON TOWNSHIP
 Sta. 253+57.12 to Sta. 254+38.88

DESIGNED F.D.R.	DRAWN F.D.R.	CHECKED D.L.D.	REVIEWED	REVISED 6-3-70
--------------------	-----------------	-------------------	----------	-------------------