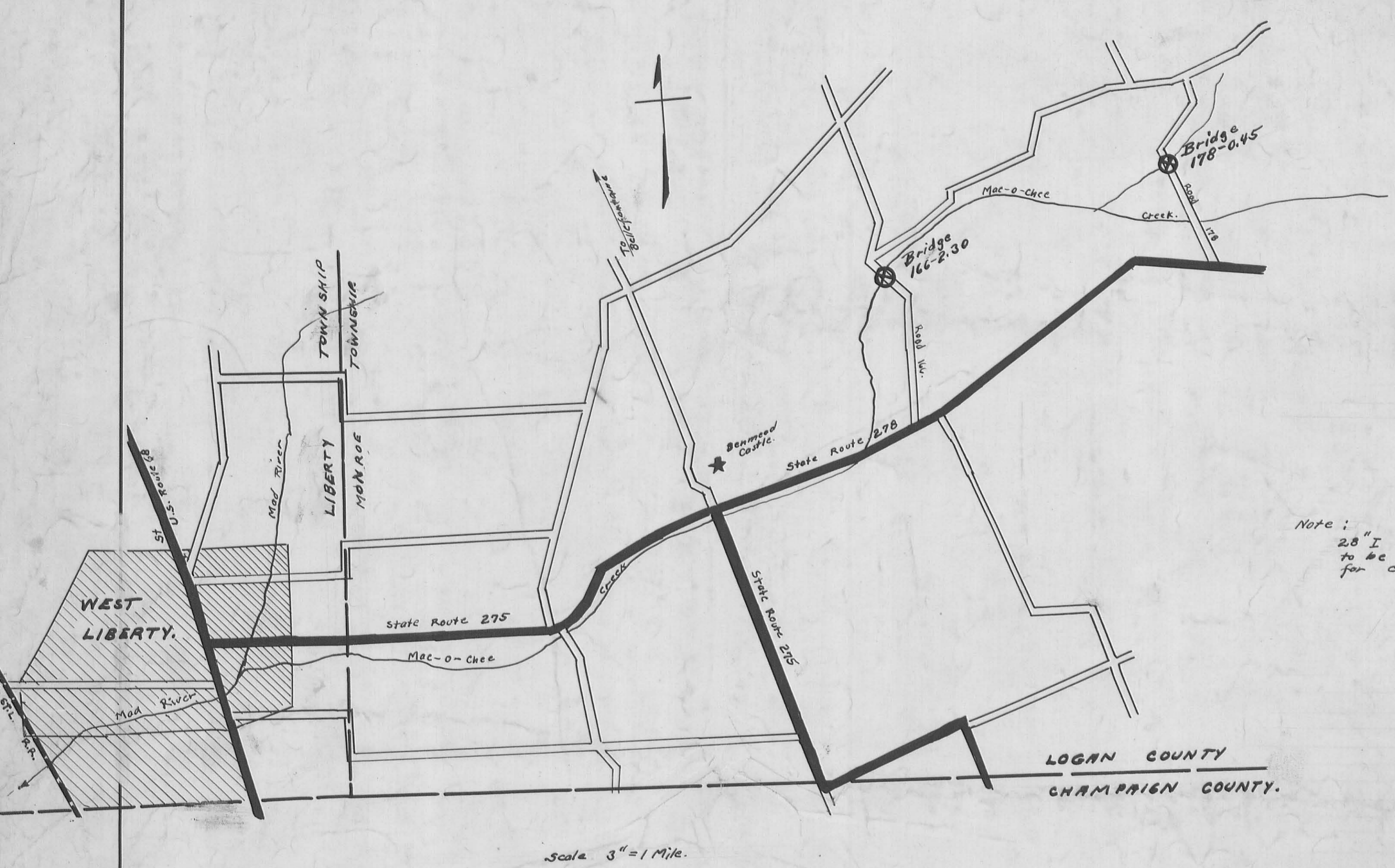


Bill of Material
 Bridge 166-2.30

Number Reqd.	Shape	Where Used.	Length	
18	12"	Piling	20'-0"	360 Lin Ft.
2	12" x 12"	Caps.	18'-0"	432 Bd. Ft.
360	2" x 4"	Floor	18'-0"	4320 Bd. Ft. (add 2000 for full 2" wide)
22	3" x 12"	Back wall	18'-0"	1188 Bd. Ft.
44	3" x 12"	Back wall (Wings)	10'-0"	1320 Bd. Ft.
10	4" x 6"	Lag Strips	6'-0"	120 Bd. Ft.
8	6" x 8"	Lag Strips (Wings)	8'-0"	256 Bd. Ft.
4	3" x 8"	Sway Bracing	18'-0"	144 Bd. Ft.
16	3" x 8"	Railing	16'-0"	512 Bd. Ft.
8	3" x 8"	Railing (Wings)	8'-0"	128 Bd. Ft.
18	6" x 8"	Railing Posts	5'-0"	360 Bd. Ft.
8	6" x 12"	Wheel Guards	16'-0"	768 Bd. Ft.
18	4" x 12"	Blocks	1'-0"	72 Bd. Ft.
7	6" x 6"	Bevel Strip	8'-0"	48 Bd. Ft.
8	6"	Fence Posts	7'-0"	Unit.
18	Pitch Burial	Top of Piles		
8	Galvanized iron	Top of Piles (Wing Piles only)		
6	I-28" x 85#	Beams	60'-0"	30 600#
26	Channel 15" x 33.9#	struts	8'-1"	2715#
12	1/2" x 16"	Bent Plates	1'-3"	408#
104	1/2" x 8" x 7/16"	For cross strut connections.	1'-0"	1019#
18	I-12" x 25#	Railing Bracket	0'-9 1/2"	356#
36	12" x 8" x 7/8" x 9/8"	Railing Bracket	0'-5"	147#
18	12" x 8 1/2" x 3/4" x 15"	Top of Wheel Guard	0'-6"	135#
10	U Strip 3" x 1/4"	Cap to Piling	4'-6"	Unit.
48	1/2" x 8" Lag Screws	Plates to Cap.	0'-8"	
10	Drift Pins 3/4" x 2 1/2"	Cap to Piles	2'-0"	
	Bead Weld 1/4" x 8"	Plates to I		192 Lin Ft. (Field Weld)
	60 D spikes			
72	Carrage Bolts 1/2"	Railing Guard to Post	12"	
54	Bolts 3/4"	Posts to Brackets	10"	
36	Bolts	Wheel Guard to Bracket	16"	
10	Bolts 3/4"	U Strip to Piling	14"	
18	Bolts 3/4"	sway Bracing to Piles 3/4" Caps.	17"	
30	Bolts 3/4"	Lag Strip to Plank	9"	
30	Bolts 3/4"	Lag Strip to piles 3/4" Cap.	21"	
30	Bolts 3/4"	Lag Strip to Piles (Wings)	20"	
200	Cast Washers 3/4"			
100	Steel Washers 1/2"			

Note:
 28" I and 15" Channels
 to be complete with holes
 for connections.



Scale 3" = 1 Mile.

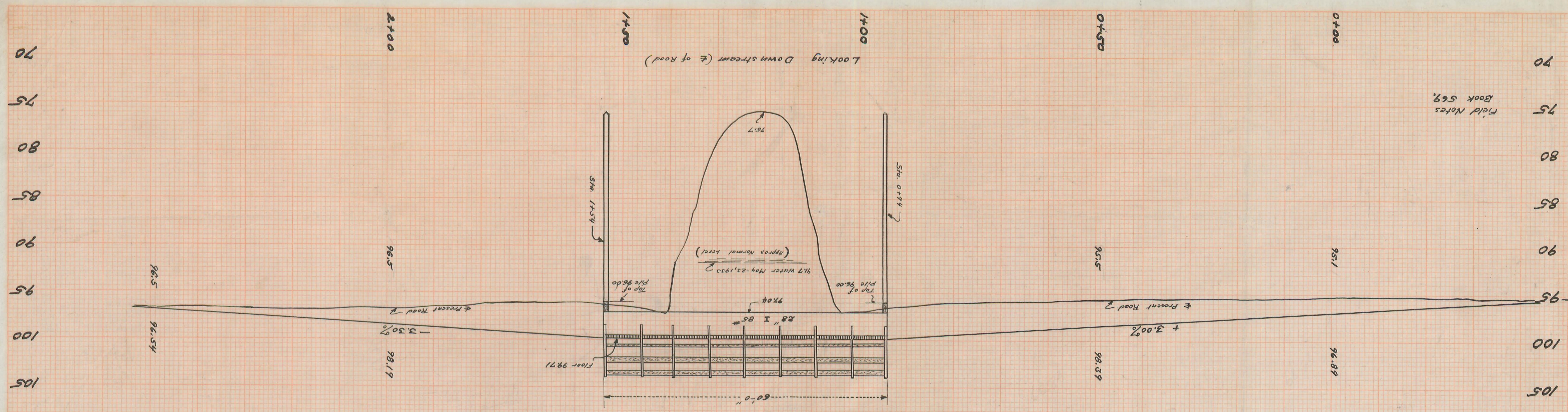
BRIDGE 166-2.30

DATE	1933
PROJECT	BRIDGE No. 166
PLANNED BY	W. W. HARRIS
DESIGNED BY	W. W. HARRIS
CHECKED BY	W. W. HARRIS
APPROVED BY	W. W. HARRIS
NO.	569

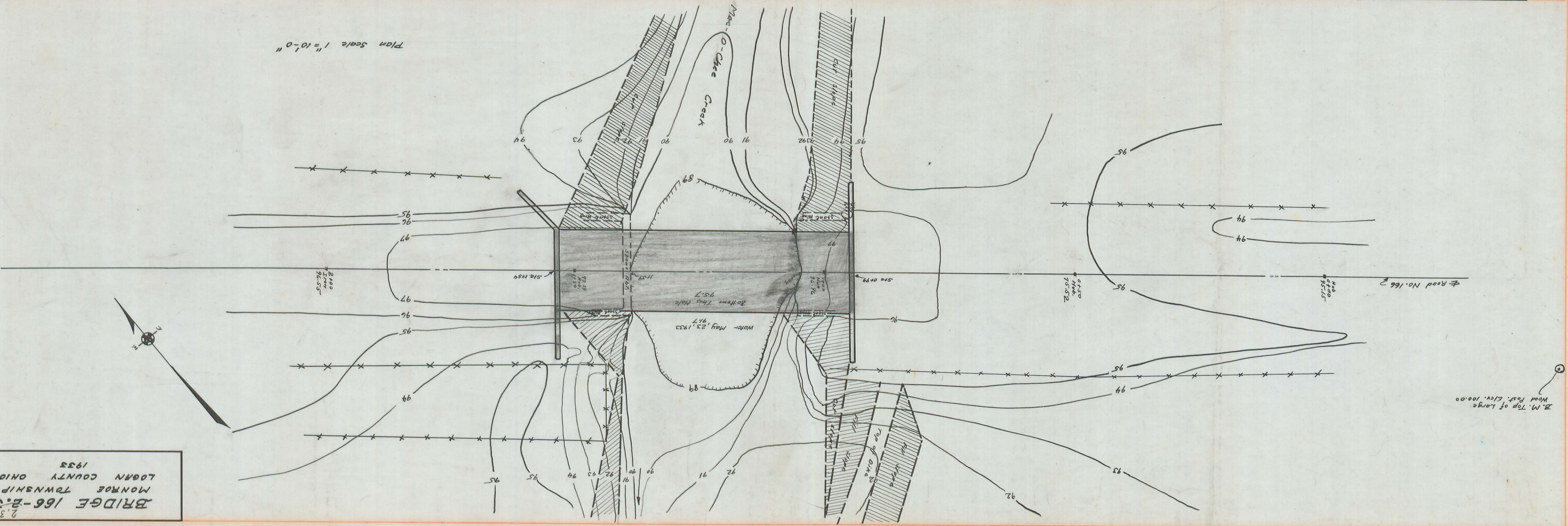
DATE	
BY	
CHECKED	
APPROVED	
PROJECT	BRIDGE No. 166
PLANNED BY	W. W. HARRIS
DESIGNED BY	W. W. HARRIS
CHECKED BY	W. W. HARRIS
APPROVED BY	W. W. HARRIS
NO.	569

Field Notes
Book 569

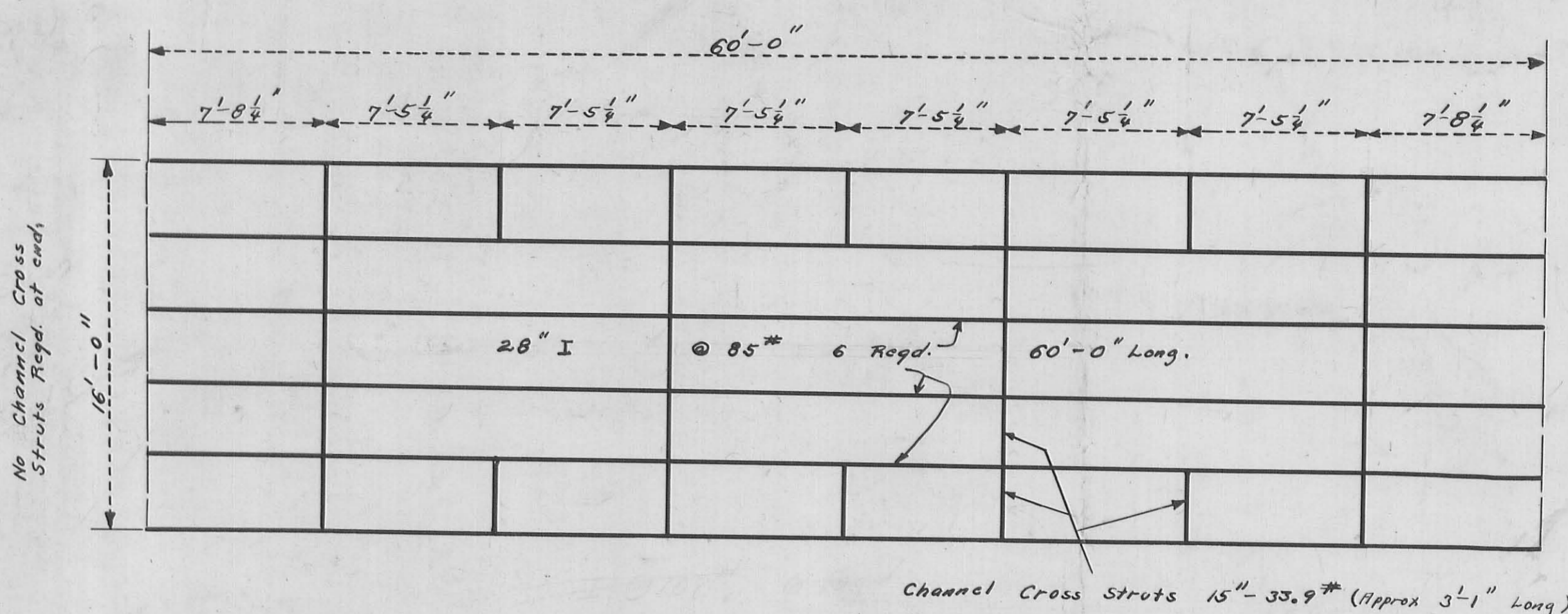
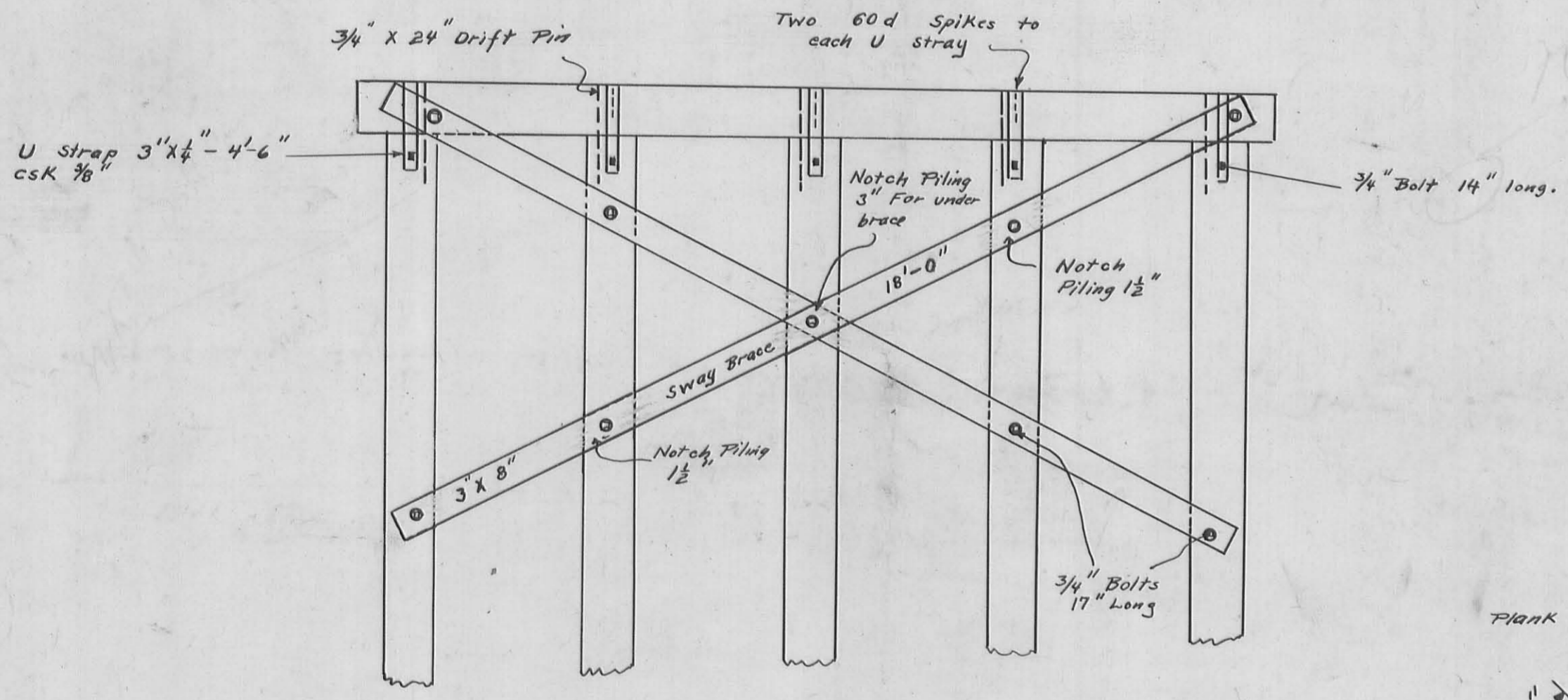
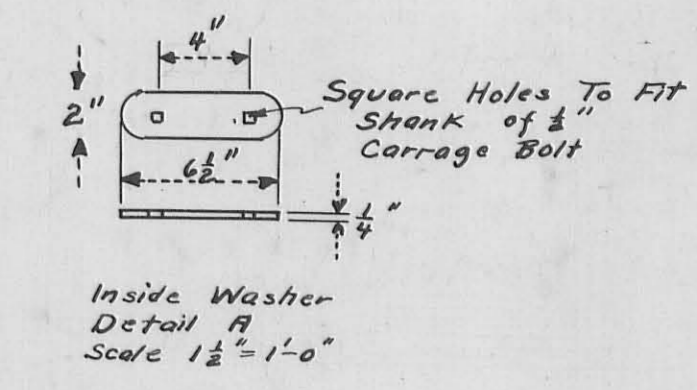
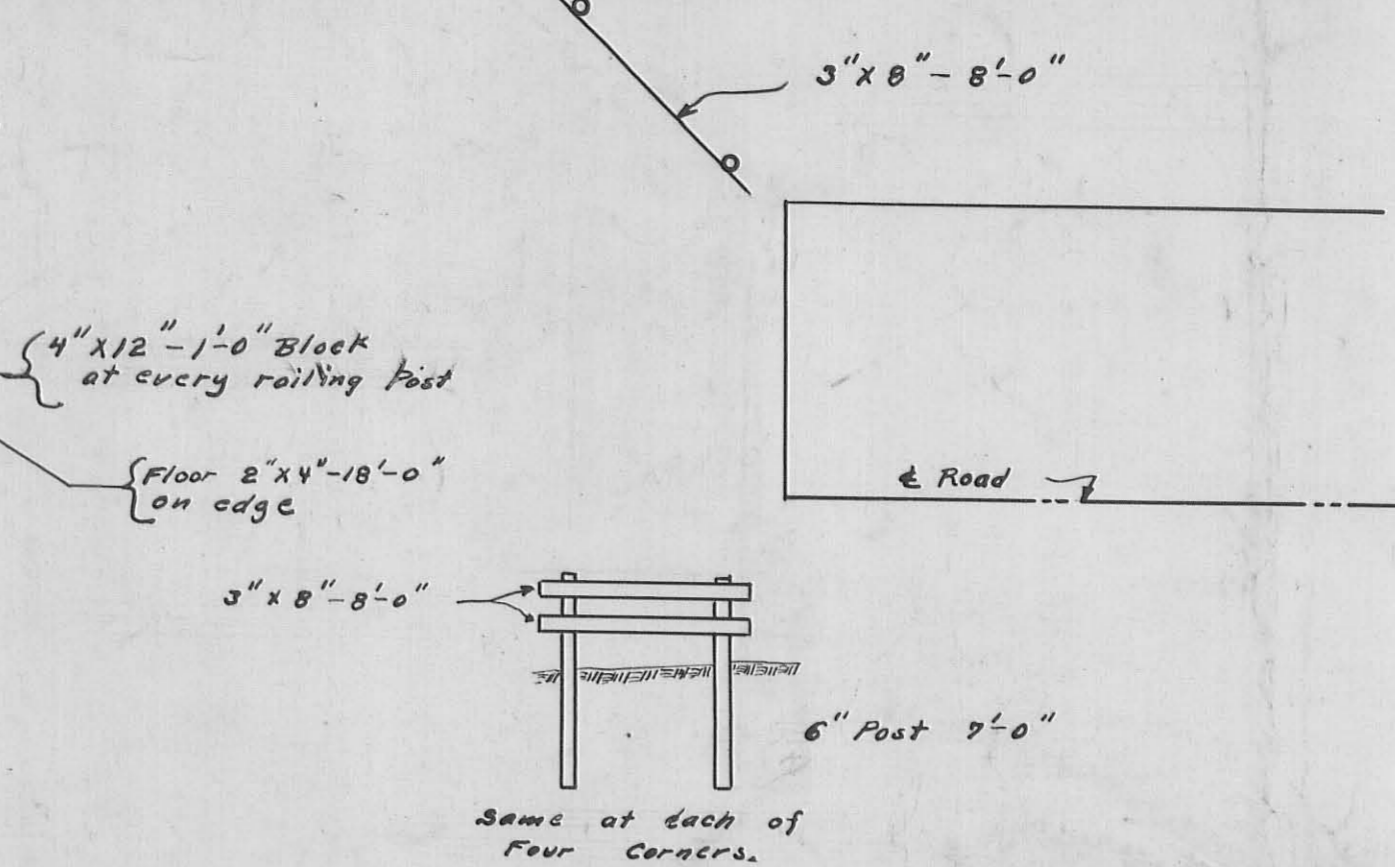
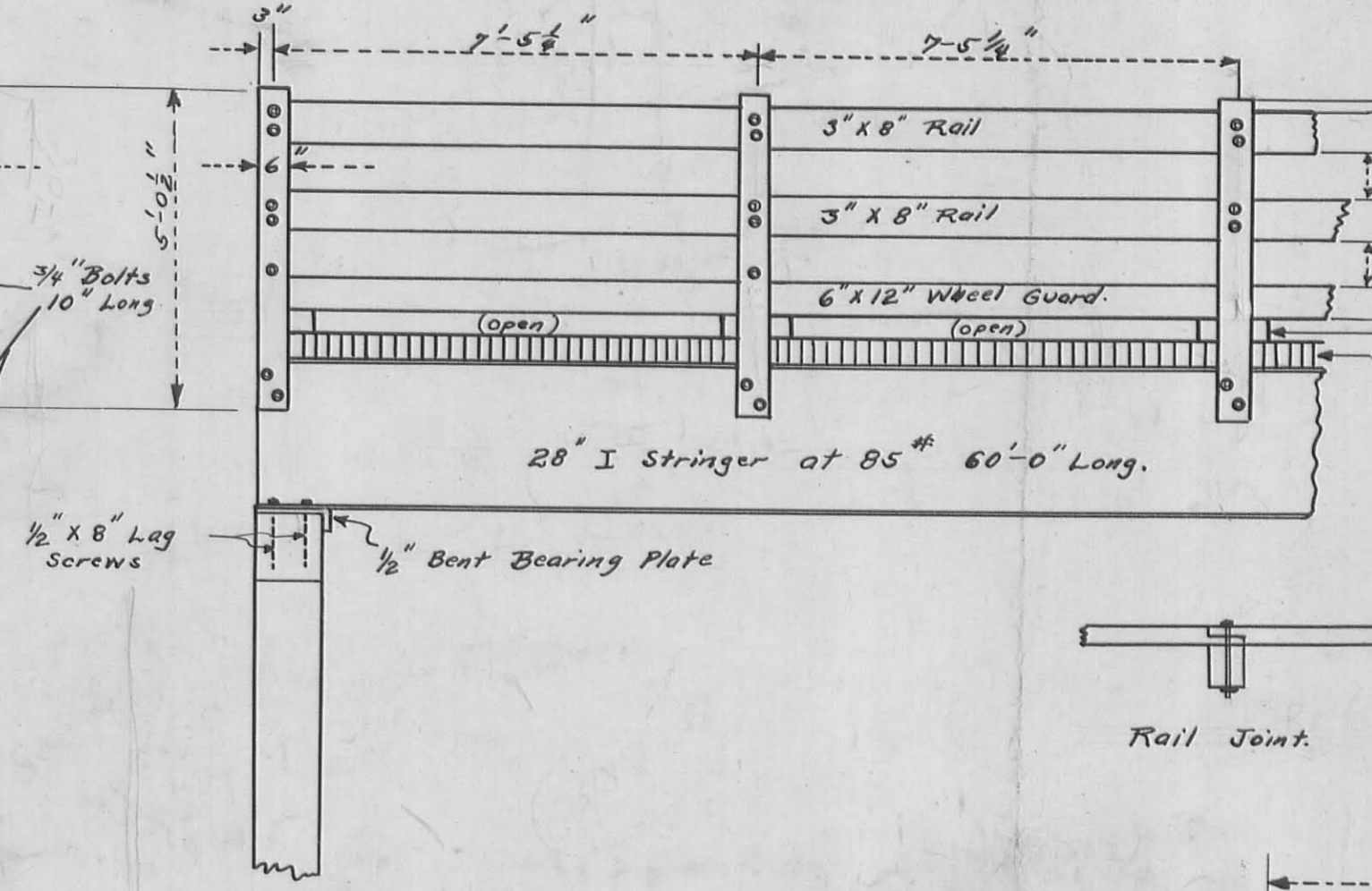
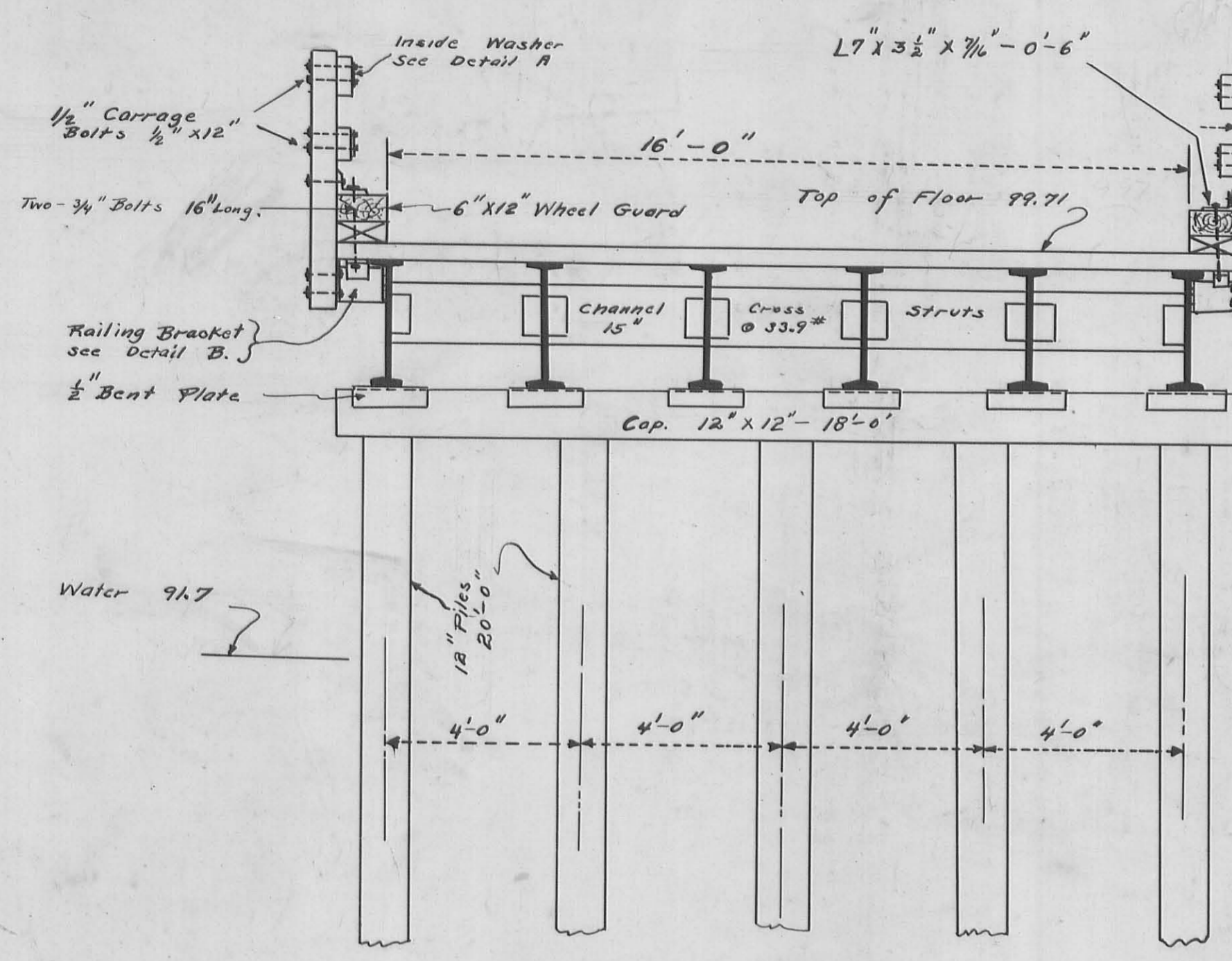
B.M. Top of large post
Sta. 0+50, West side
of Road. Elev. 100.00



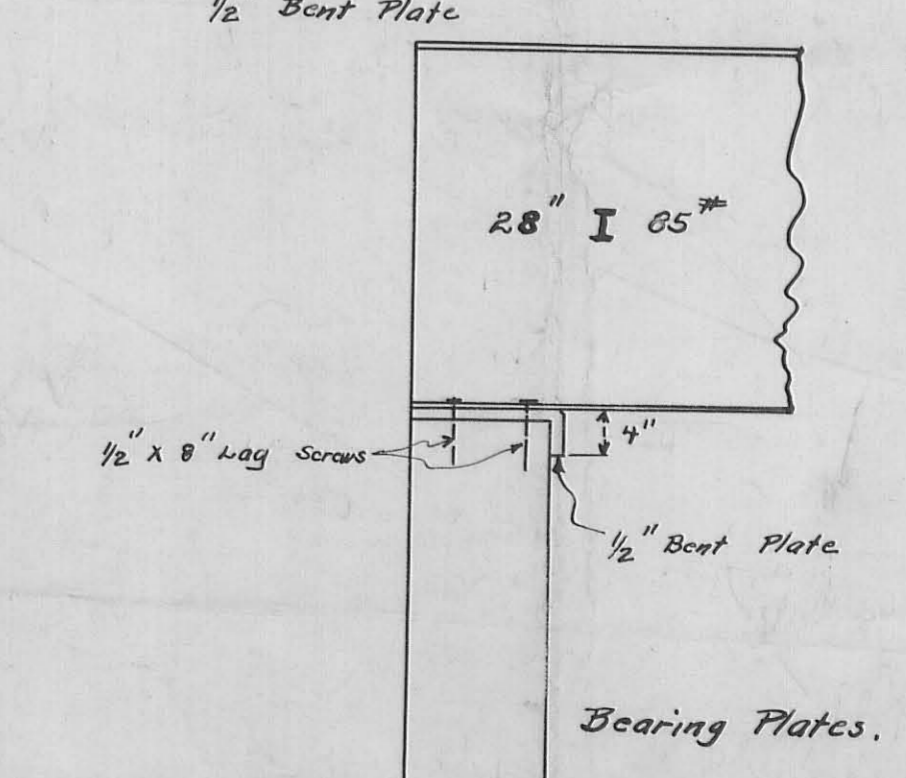
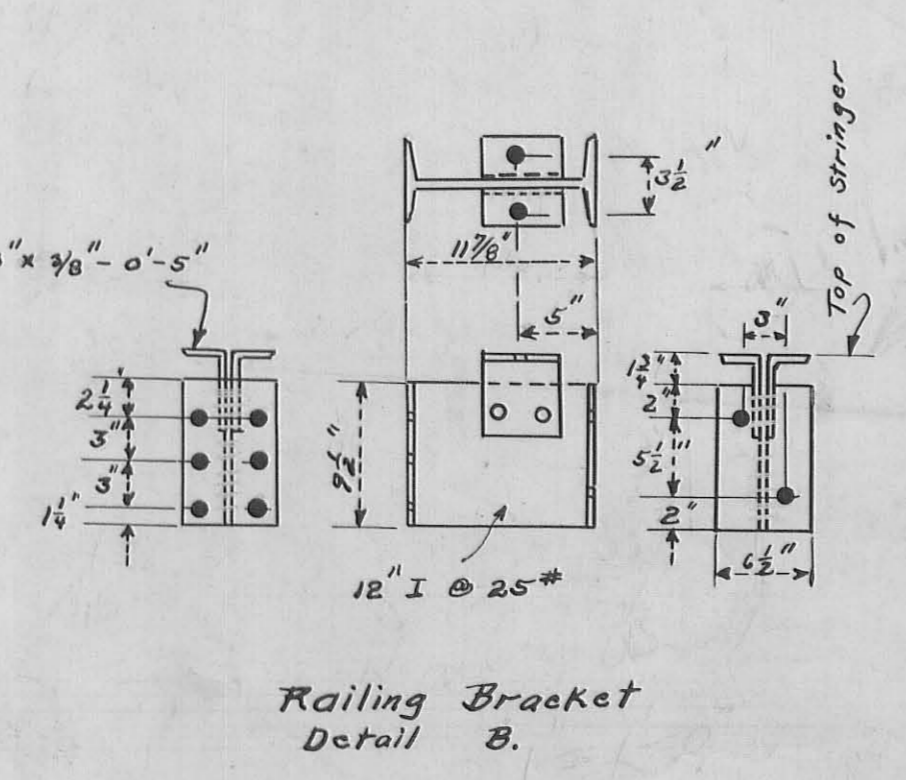
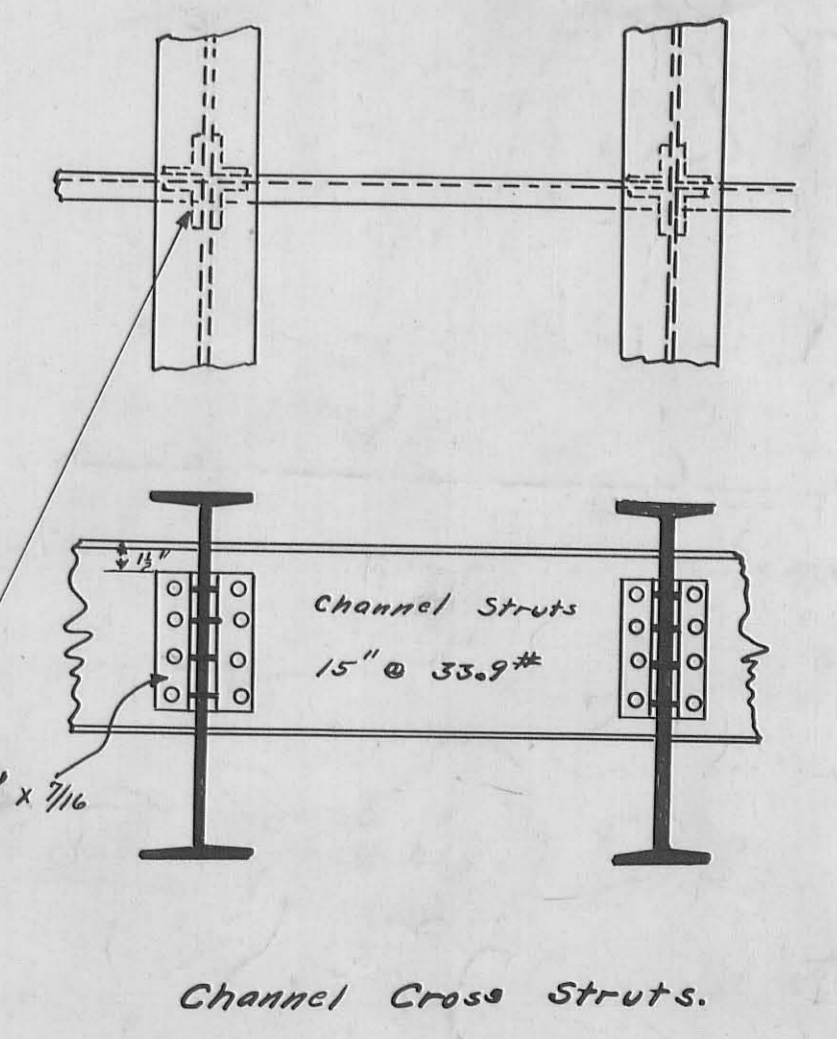
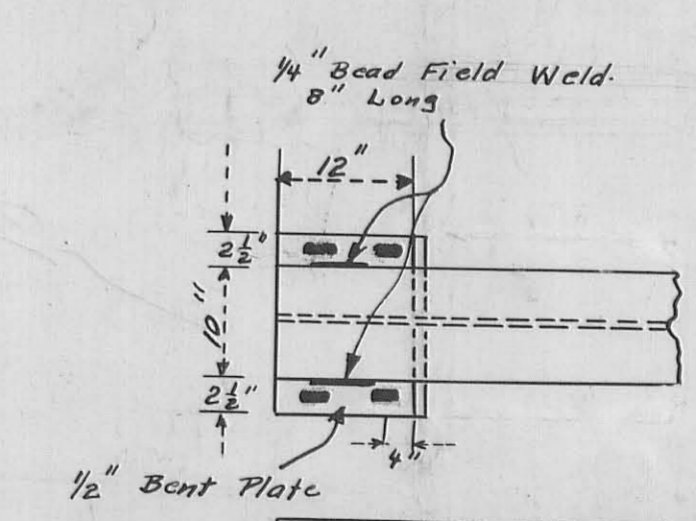
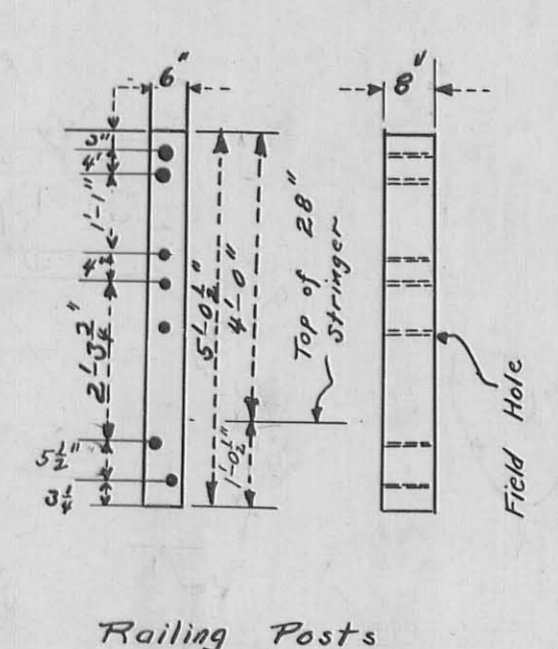
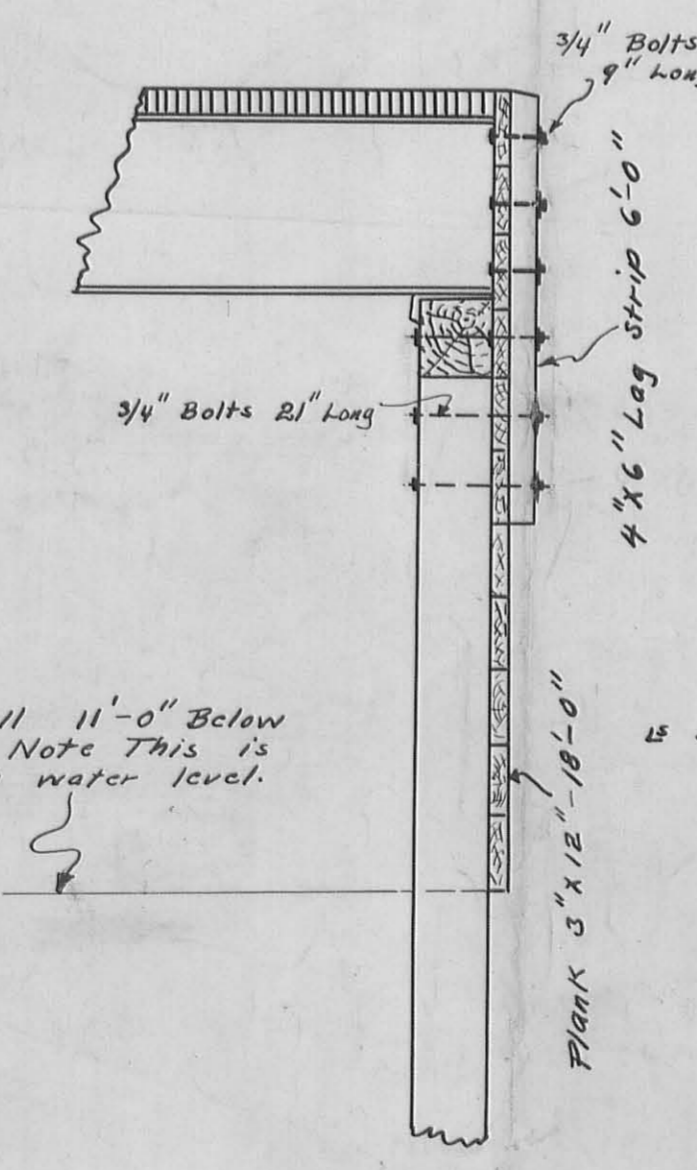
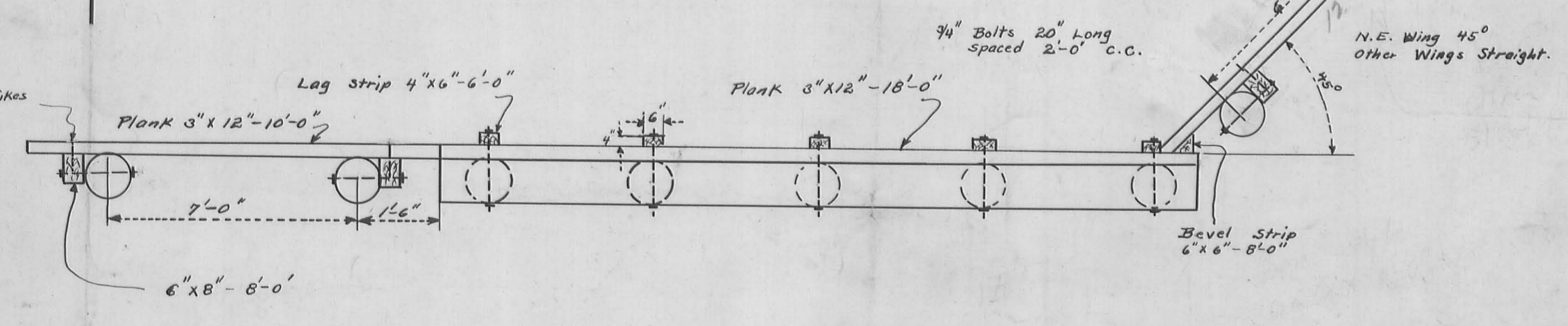
Plan Scale 1" = 10'-0"



BRIDGE 166-2-30
MONROE TOWNSHIP
LOGAN COUNTY OHIO
1933
2.39
4/2



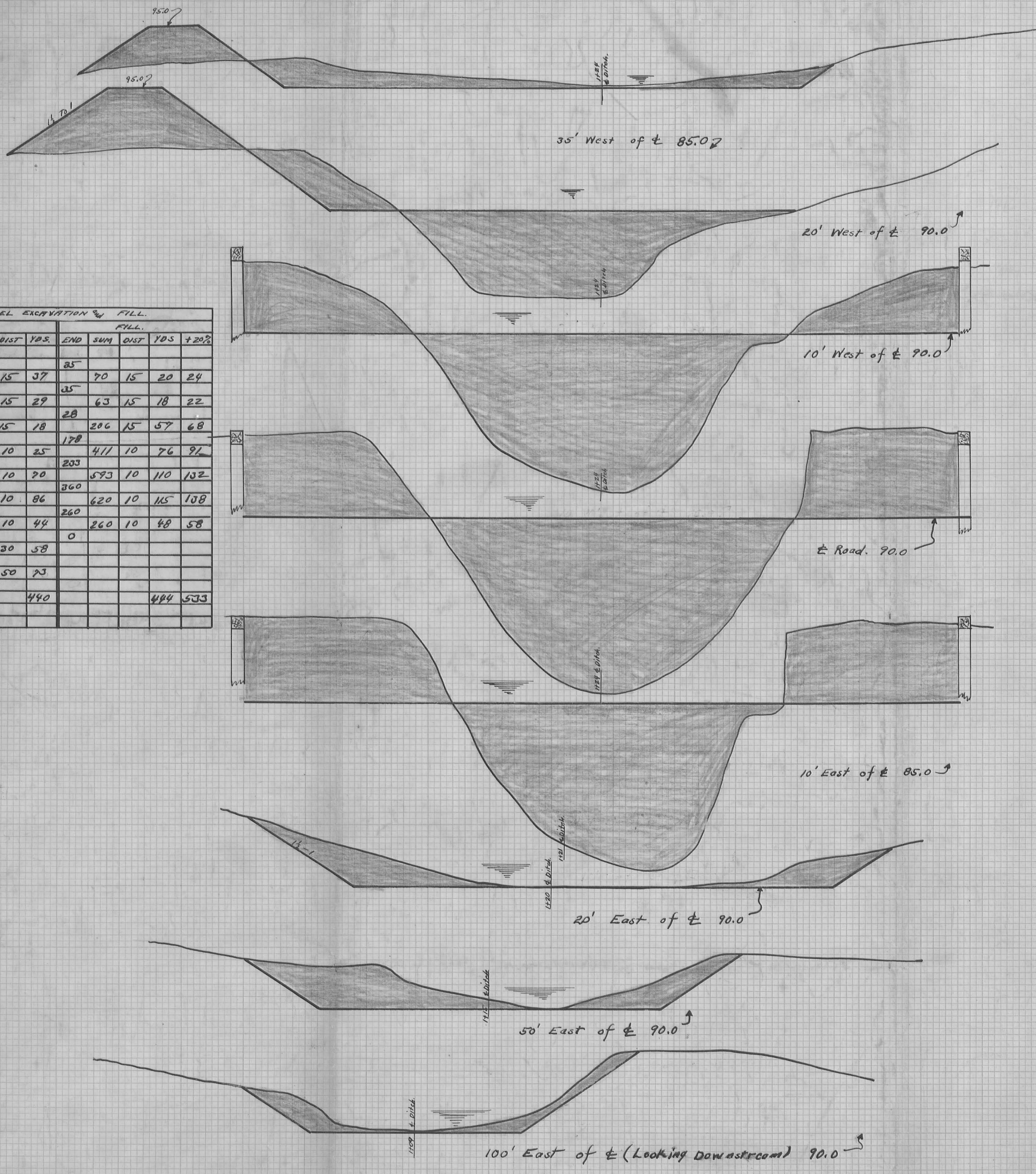
Note:-
 All bolts and rivets 3/4"
 unless otherwise shown.
 All bolts against wood to
 have washers. 1/2" Washers
 may be steel. 3/4" Washers
 to be cast iron.
 Bolts and rivets for steel
 not listed separate but
 are included in price of steel.
 2"x4" Flooring to be nailed
 with
 All steel to have one
 shop coat of red lead.



Sta.	CUT				FILL			
	END	SUM	DIST	YDS	END	SUM	DIST	YDS
65' W.	66			35				
50' W.	66	132	15	37	35	70	15	24
35' W.	38	104	15	29	35	63	15	22
20' W.	28	66	15	18	28	206	15	68
10' W.	105	133	10	25	178	411	10	76
±	273	378	10	20	203	573	10	132
10' E.	192	465	10	86	360	620	10	115
20' E.	45	237	10	44	0	260	10	48
30' E.	59	104	30	58				
100' E.	20	79	50	73				
			440					484
								533

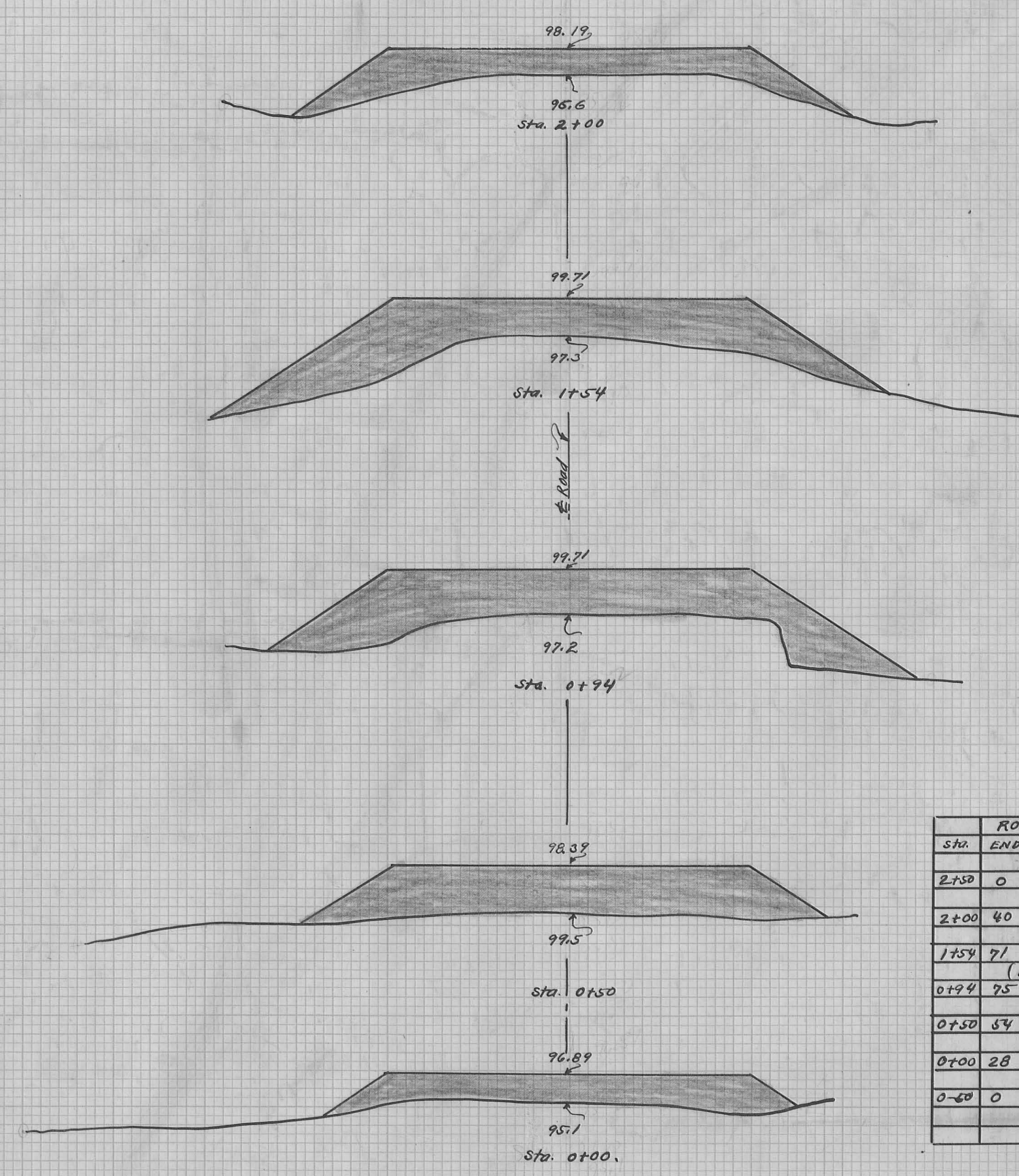
1930
 1931
 1932

Scale
 5'



0+80 0+85 0+90 0+95 1+00 1+05 1+10 1+15 1+20 1+25 1+30 1+35 1+40 1+45 1+50

West: ← East: →



Sta.	ROADWAY FILL				
	END	SUM	DIST	YDS	+20%
2+50	0				
2+00	40	40	50	37	
1+54	71	111	46	95	
(BRIDGE)					
0+94	75	127	44	105	
0+50	54	82	50	96	
0+00	28	28	50	27	
0-60	0				
				340	408

