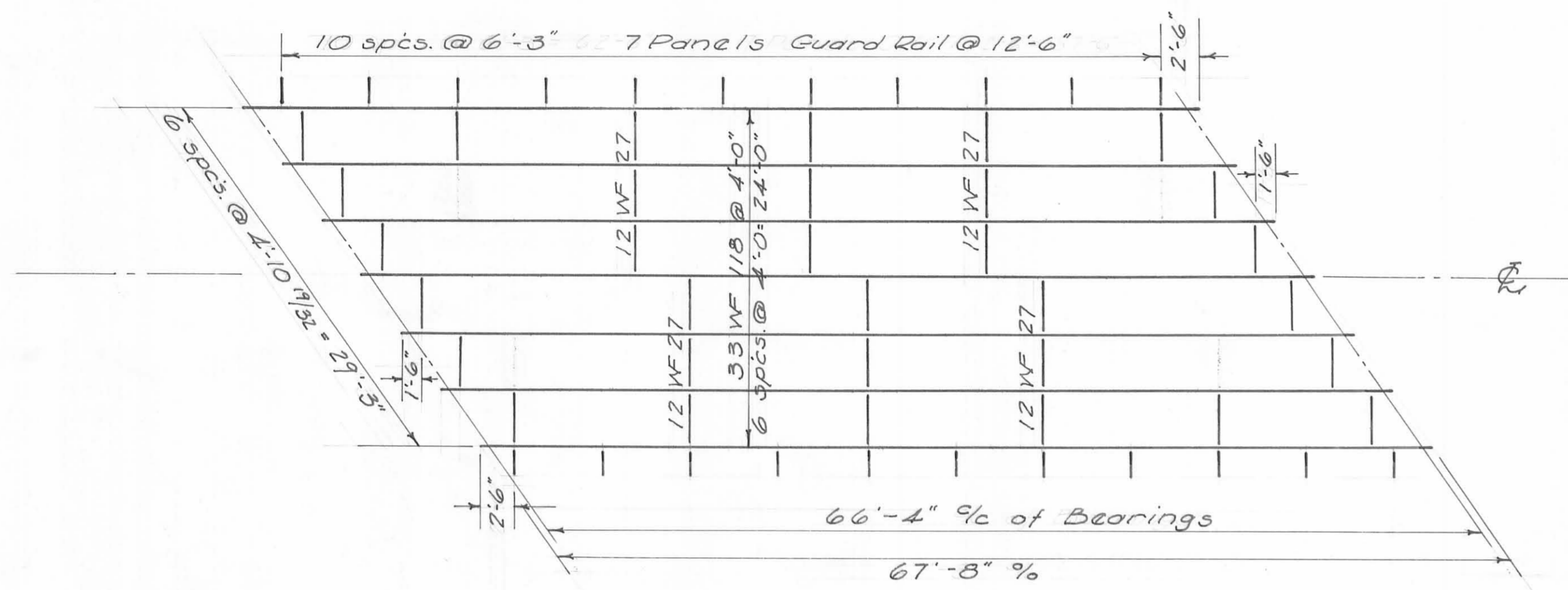
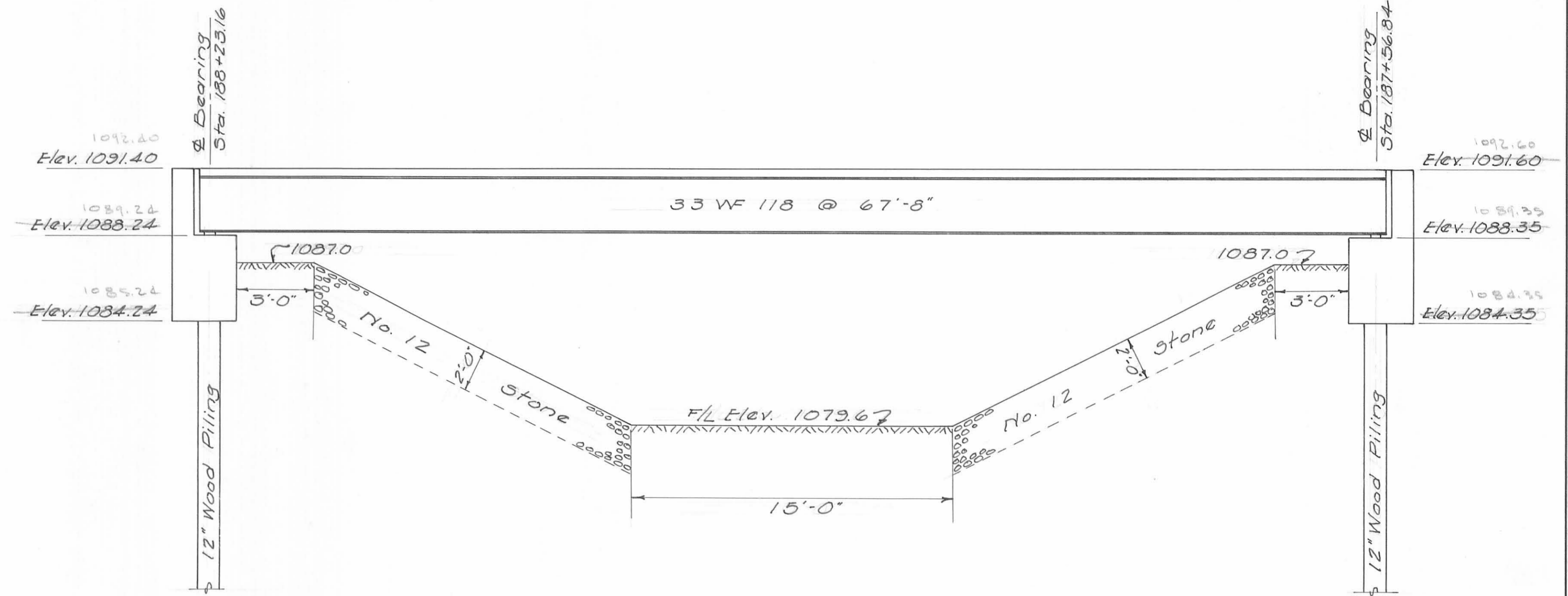


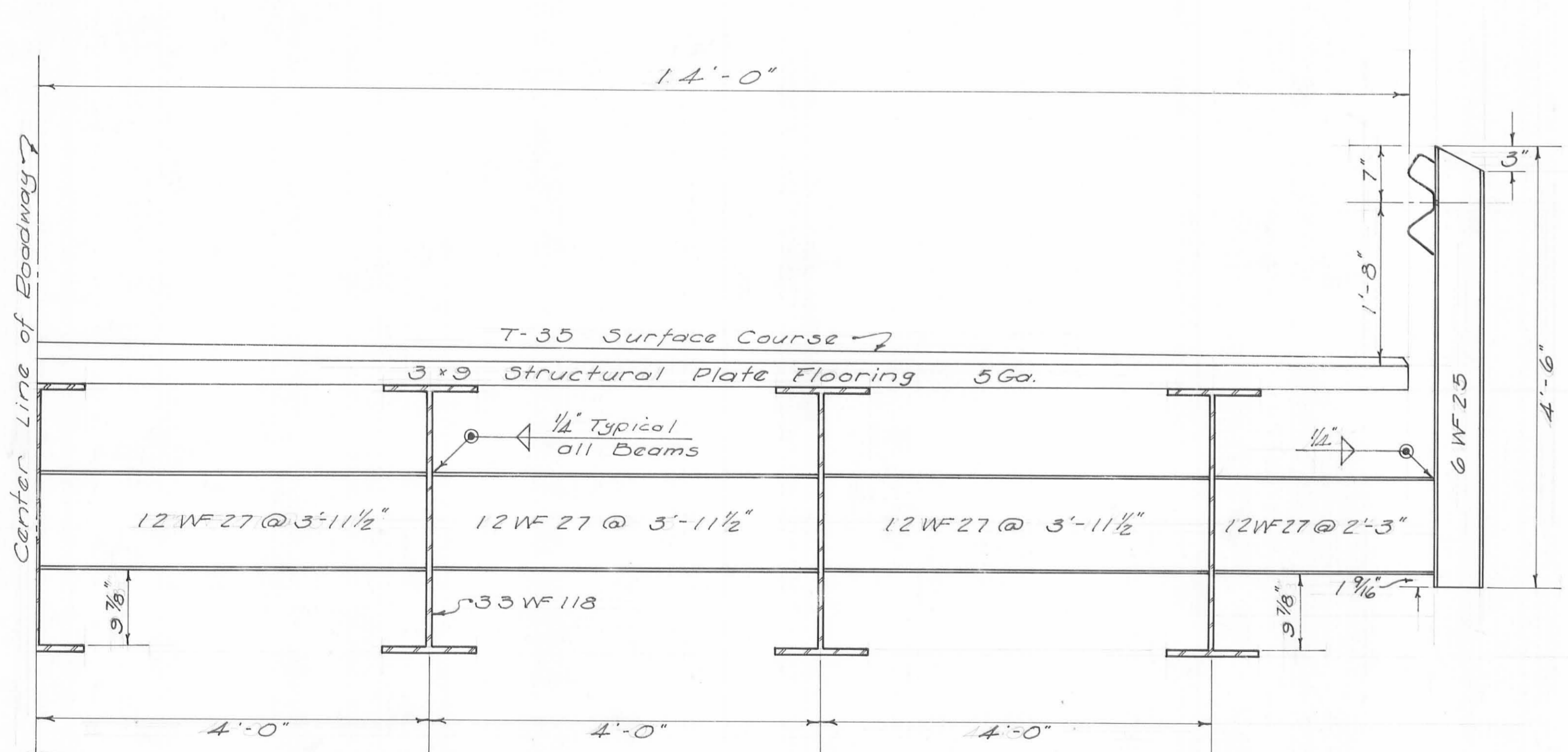
LOGAN COUNTY HIGHWAY DEPT. C. R. KURTZ COUNTY ENGINEER			
BRIDGE No. 11-6.75 OVER BLUE JACKET CREEK HARRISON TWP LOGAN Co. 1966			
DESIGNED D.L.D.	CHECKED C.R.K.	APPROVED C.R.K.	FILE No.



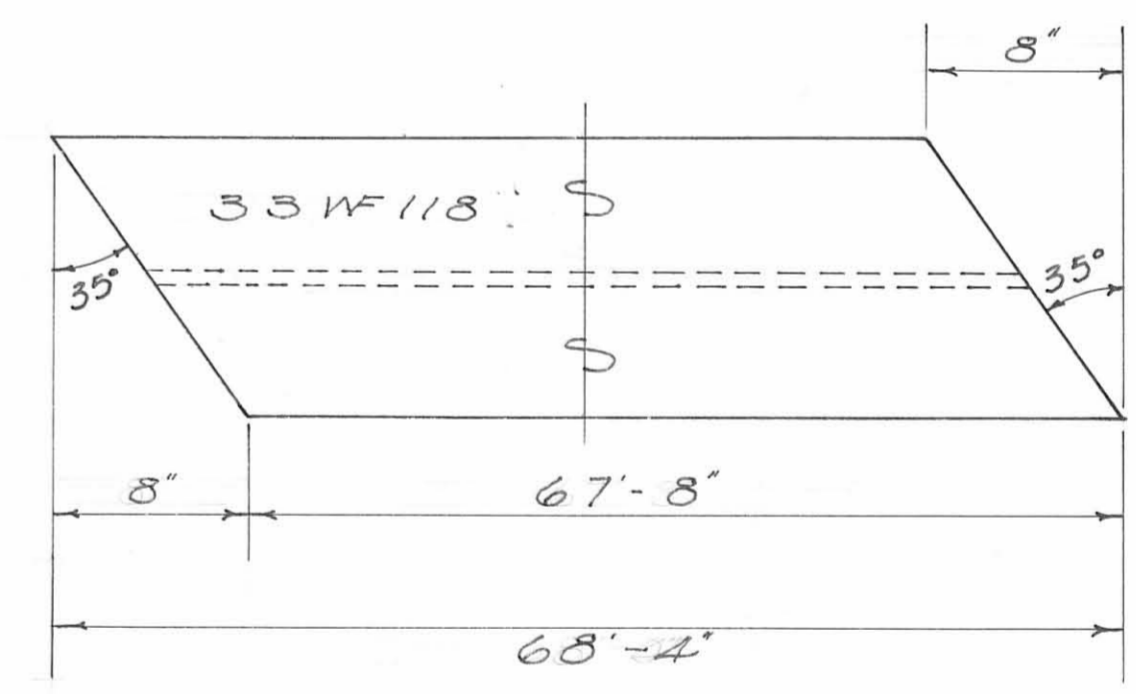
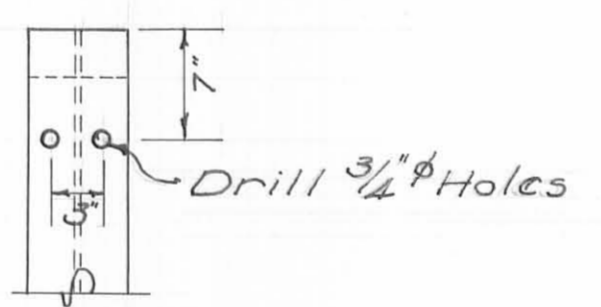
STEEL FRAMING PLAN
 1/8" = 1'



ELEVATION
 1/4" = 1'



HALF SECTION
 1" = 1'



SKEW CUT DETAIL

LOGAN COUNTY HIGHWAY DEPT. C.R. KURTZ COUNTY ENGINEER			
BRIDGE No. 11-6.75 OVER BLUE JACKET CREEK HARRISON TWP. LOGAN Co. 1966			
DESIGNED D.L.D.	CHECKED C.R.K.	APPROVED C.R.K.	FILE No.