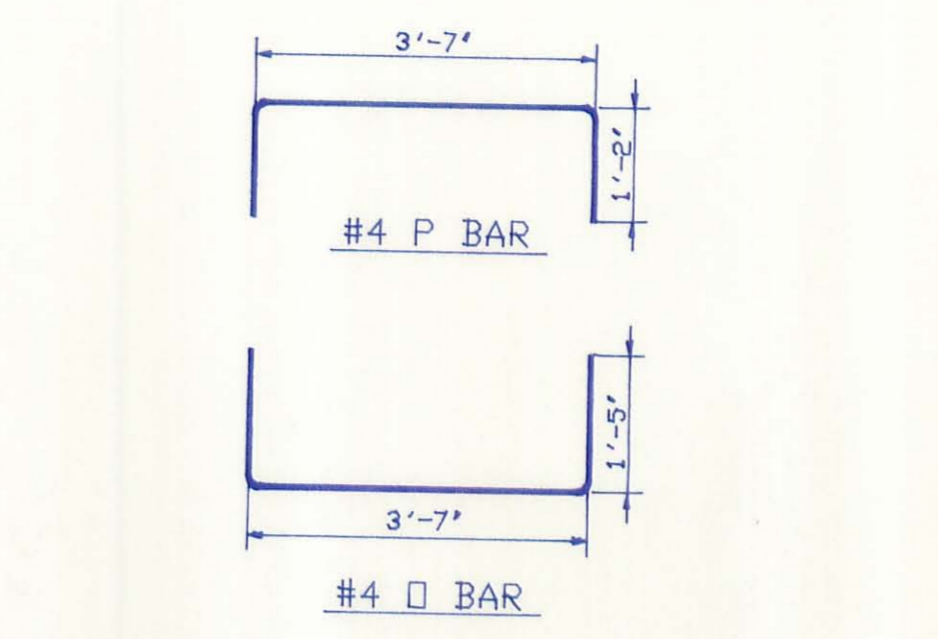
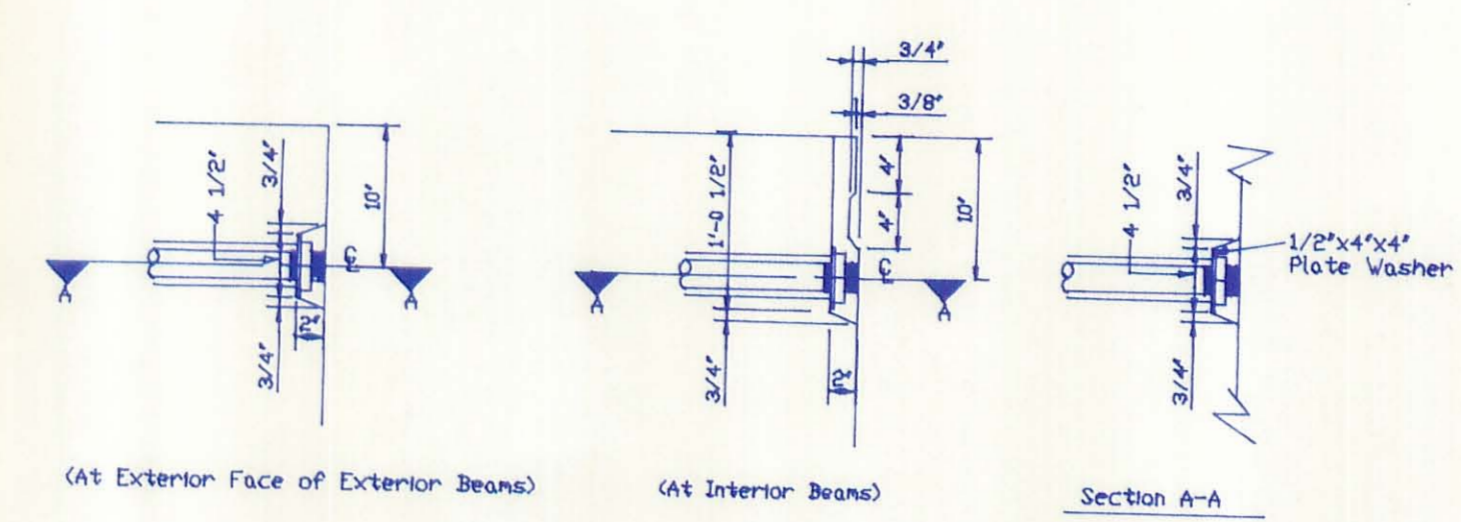


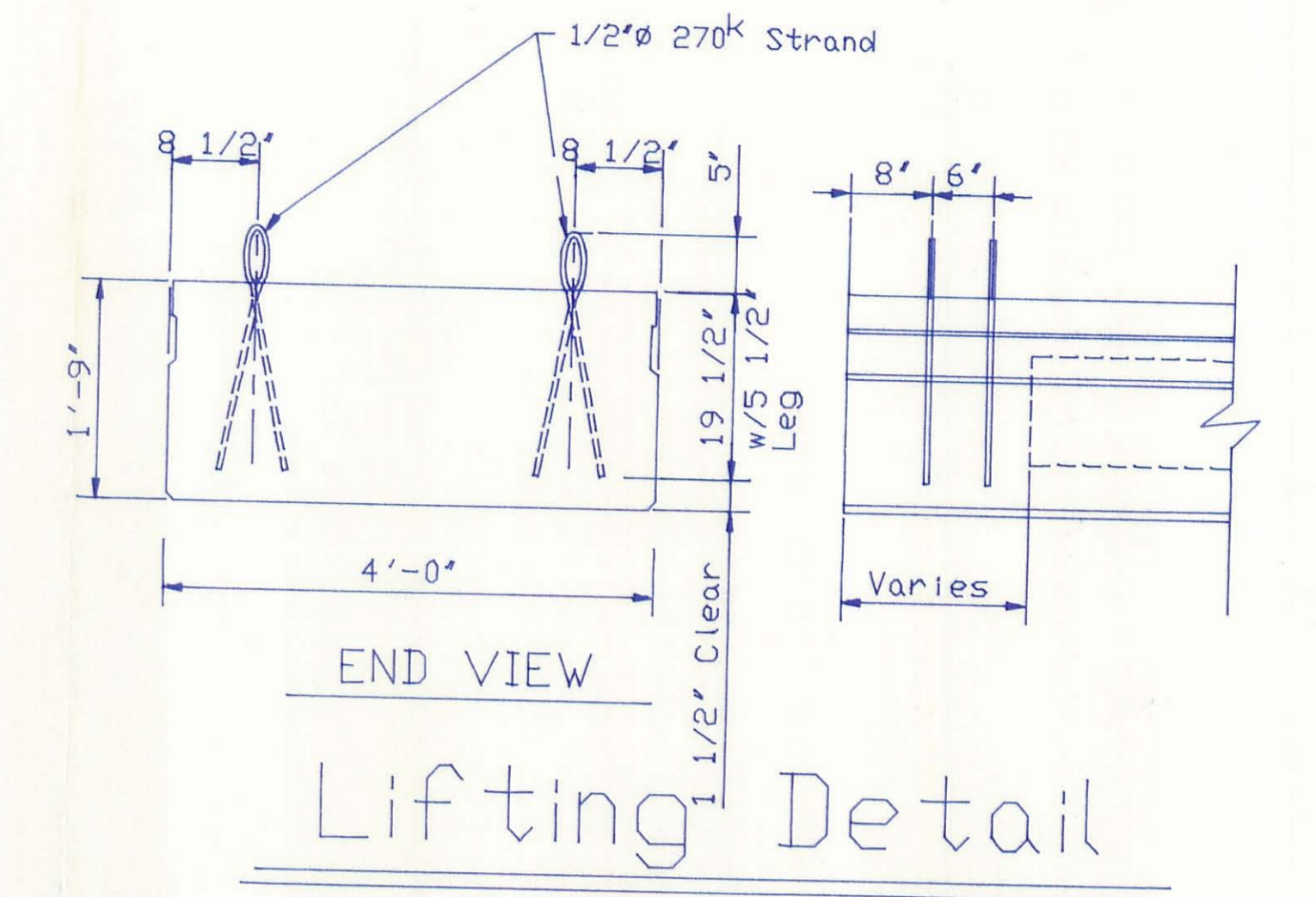
Typ. Cross Section.



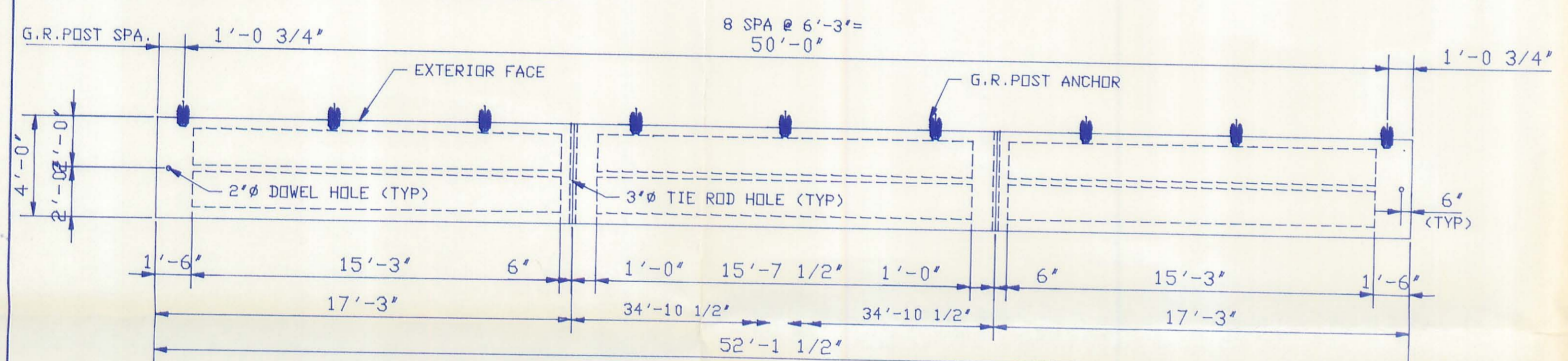
TYPICAL STEEL LAYOUT  
(ALL REINFORCING STEEL IS GRADE 40 MIN.)



TIE ROD HAND HOLES

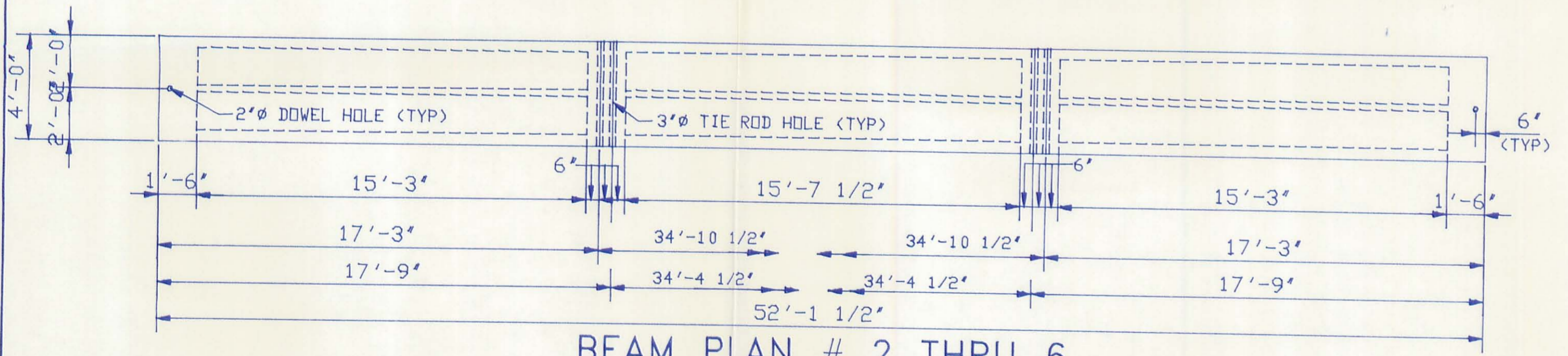


END VIEW  
Lifting Detail



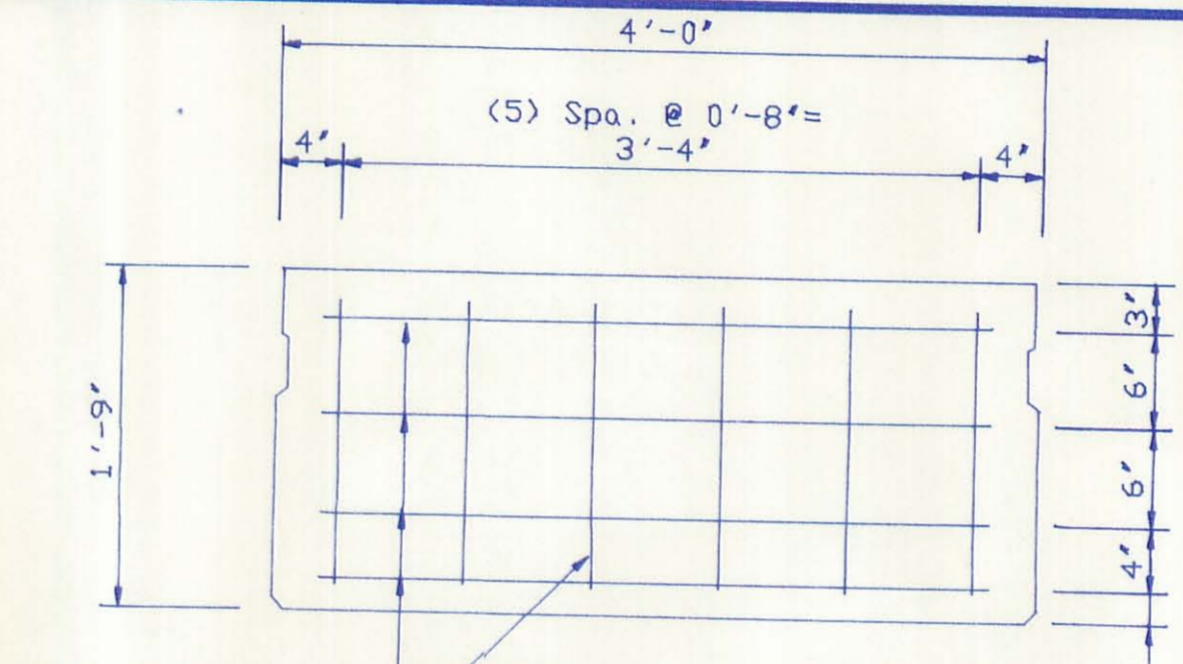
BEAM PLAN # 1 & 7

(CASTING WEIGHT = 35,690 LBS.) (SHIPPING WEIGHT = 36,835 LBS.)

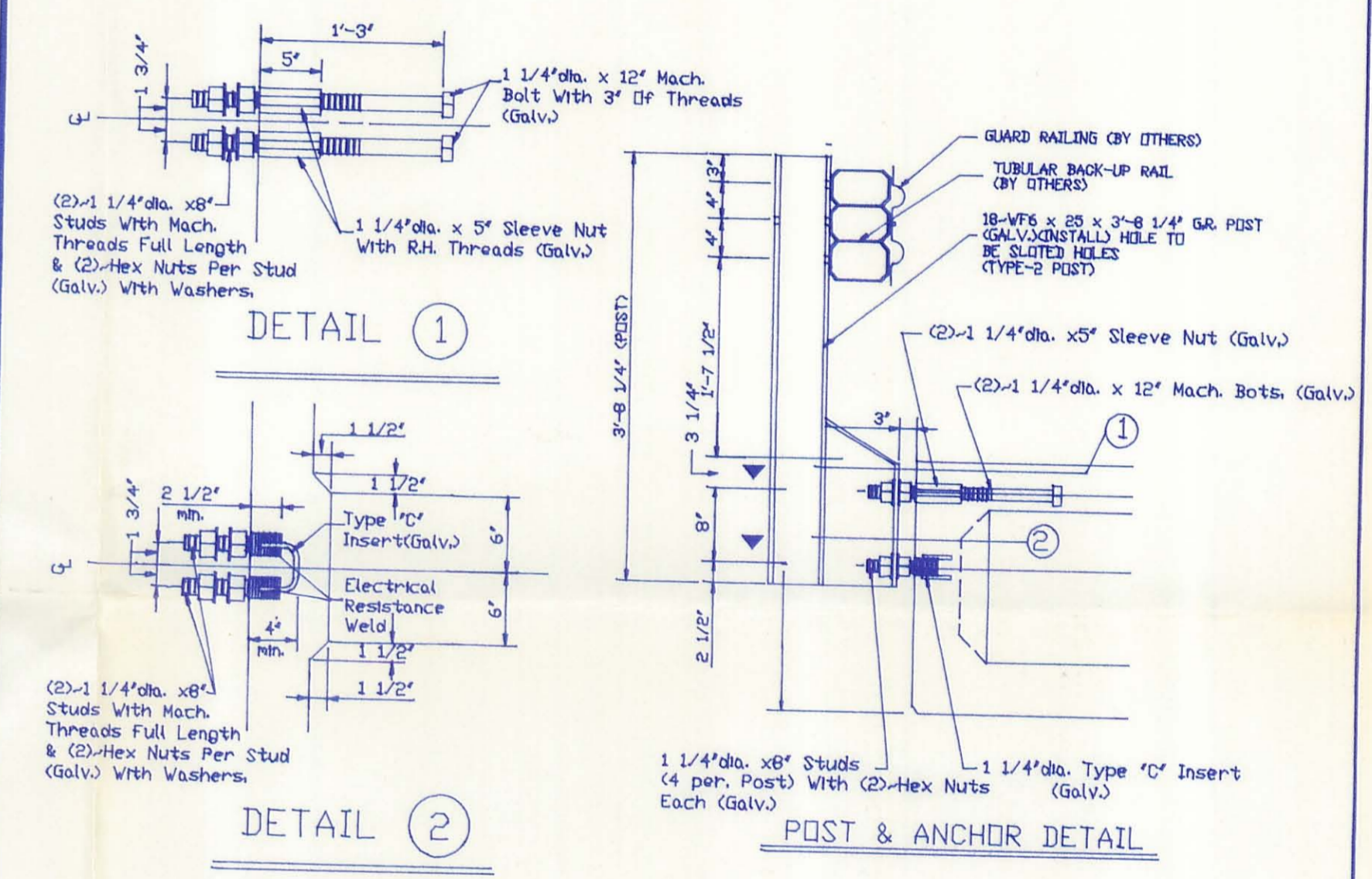


BEAM PLAN # 2 THRU 6

(CASTING WEIGHT = 35,375 LBS.) (SHIPPING WEIGHT = 35,375 LBS.)

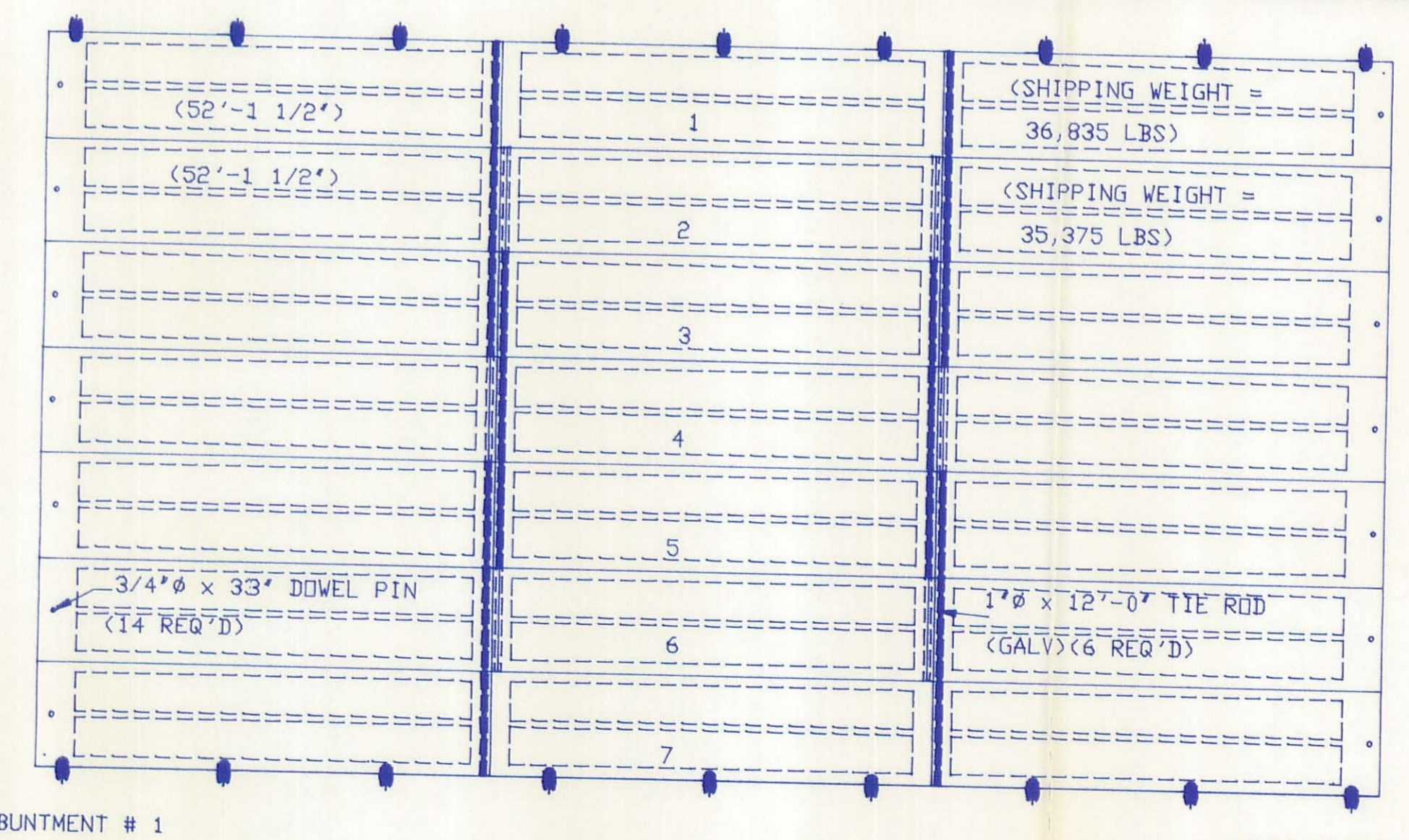


End Mat Detail

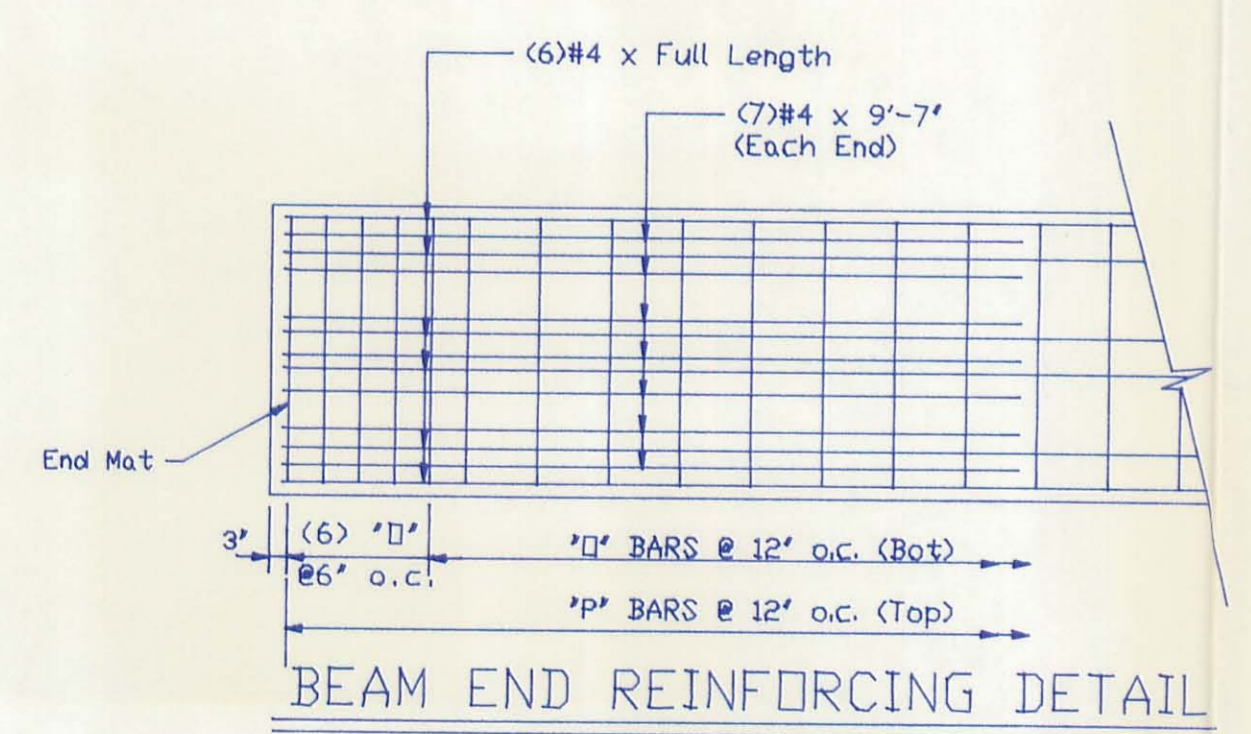


DETAIL 1  
DETAIL 2

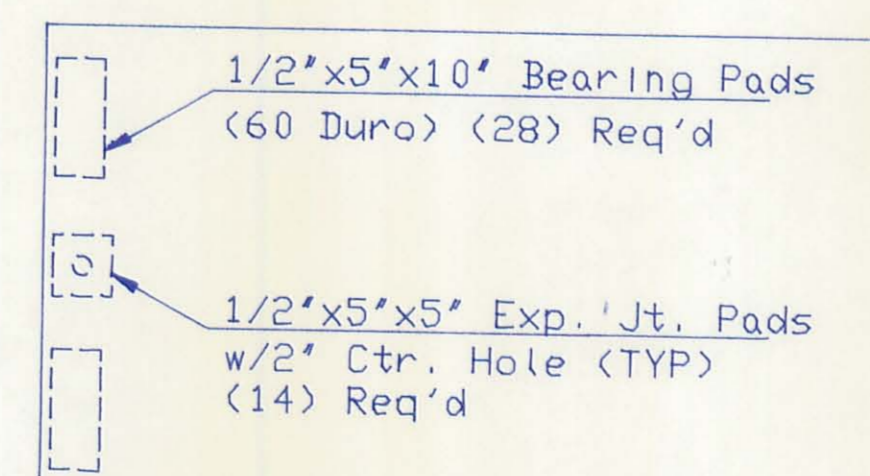
POST & ANCHOR DETAIL



BEAM LAYOUT



BEAM END REINFORCING DETAIL



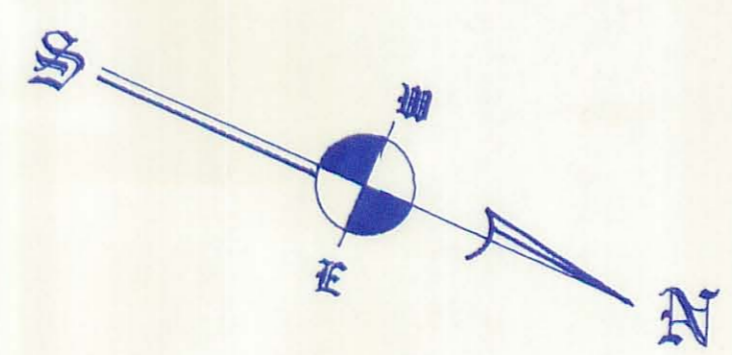
BEARING PAD PLACEMENT DETAIL

- NOTES:
1. CONCRETE STRENGTH AT TIME OF PRESTRESSING IS 4000 P.S.I. AND AT 28 DAYS IS 5500 P.S.I.
  2. DETENSION STRAND SYMMETRICALLY ABOUT CENTER LINE.
  3. LOADING= HS-20-44 & ALTERNATE MILITARY.
  4. BEAM WEIGHT=SEE BEAM PLANS.
  5. TOP SURFACE OF BEAMS GIVEN A FLAT FLOATFINISH
  6. ANTICIPATED CAMBER AS SHOWN ON PROJECT PLANS= 2"
  7. WATERPROOF BEAM ENDS

CHANGES ARE NOTED AS DIFFERENT FROM O.D.D.T. STD. DWG. P.S.B.D.-1-81 AND ARE VARIED PER NOTE ON DWG. P.S.B.D.-1-81 SHT 2 OF 4.

1. 3/4" KEYWAY TO 4/4" KEYWAY.
2. TIE ROD HAND HOLE FROM 9" TO 10".

Change brg. pads to 1" thick  
760 4-29-92



REVISIONS				Project	
NO.	Description	Date	By	Br. No.	LOG - TR 97 - 03.00
				County, State	LOGAN COUNTY, OHIO
				Location	OVER NORTH FORK MIAMI RIVER
				Contractor	COUNTY FORCES
				Date	4-24-92
				Drawn By	M.A.T.
				Checked By	WBA
				P.C.#	9421
				Job No.	2564
				Drawing No.	1 of 1