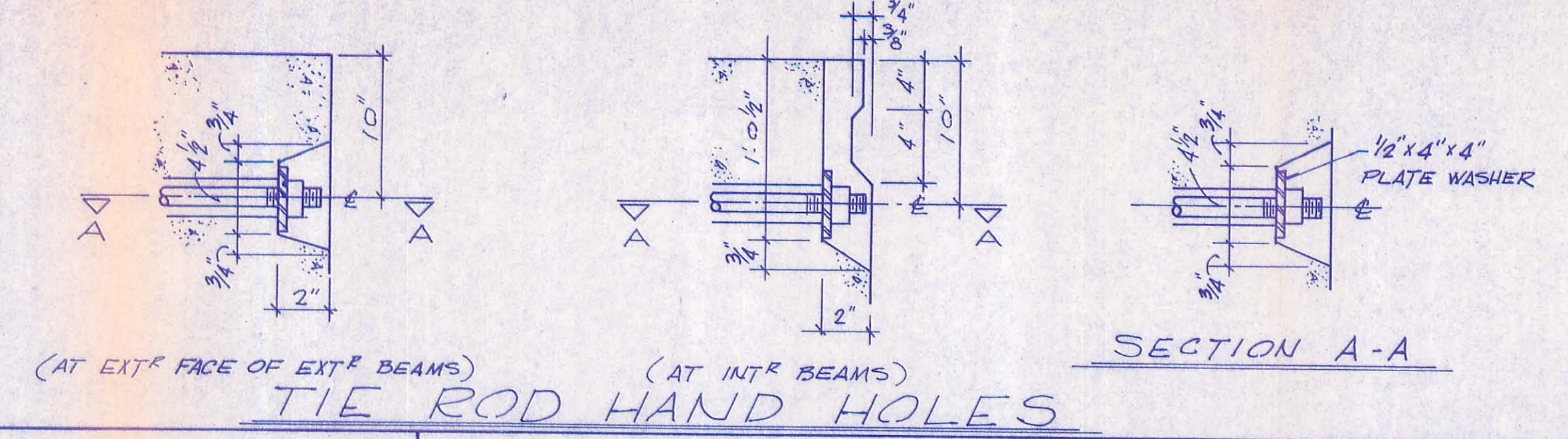
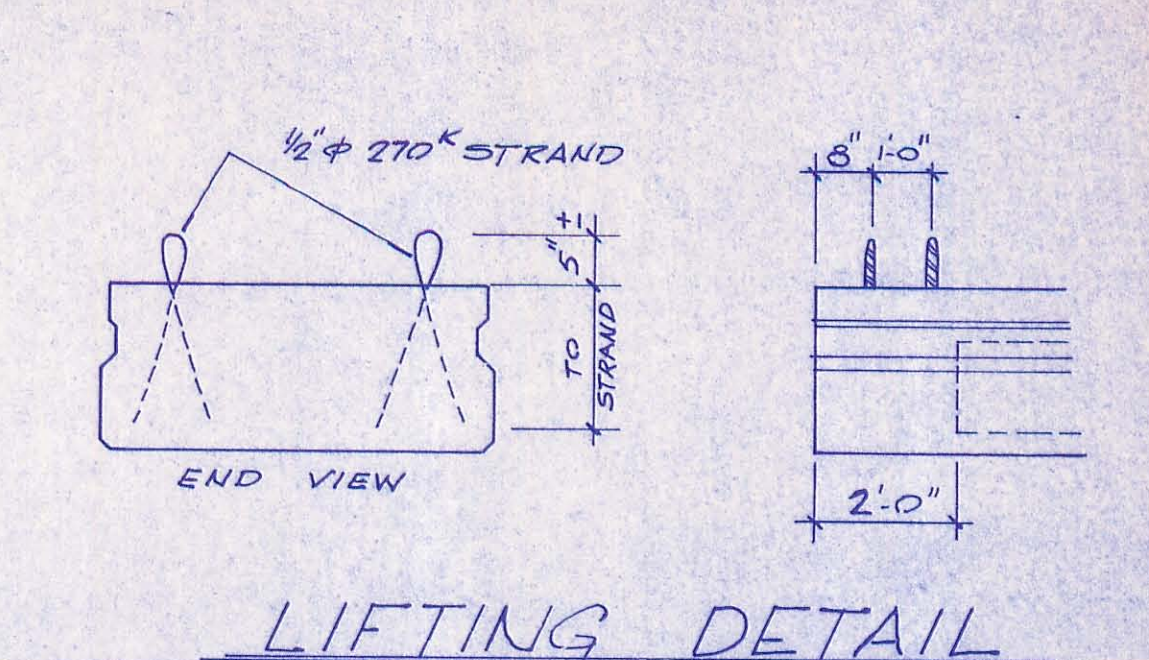


TYP. STEEL LAYOUT

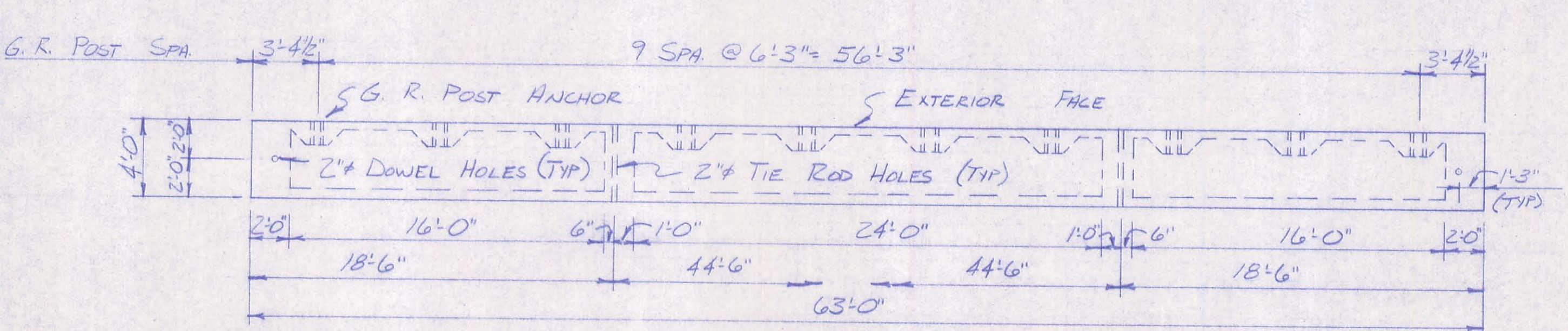


(AT EXTR FACE OF EXTR BEAMS) (AT INTR BEAMS) SECTION A-A

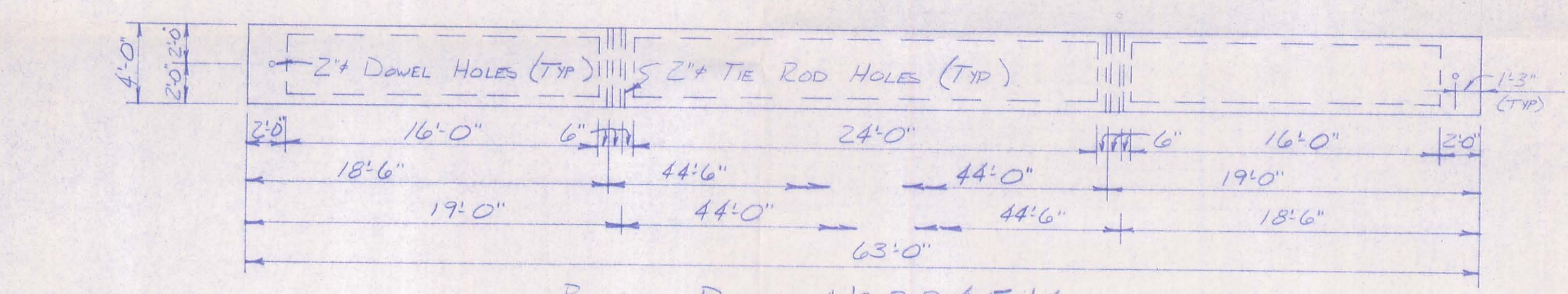


LIFTING DETAIL

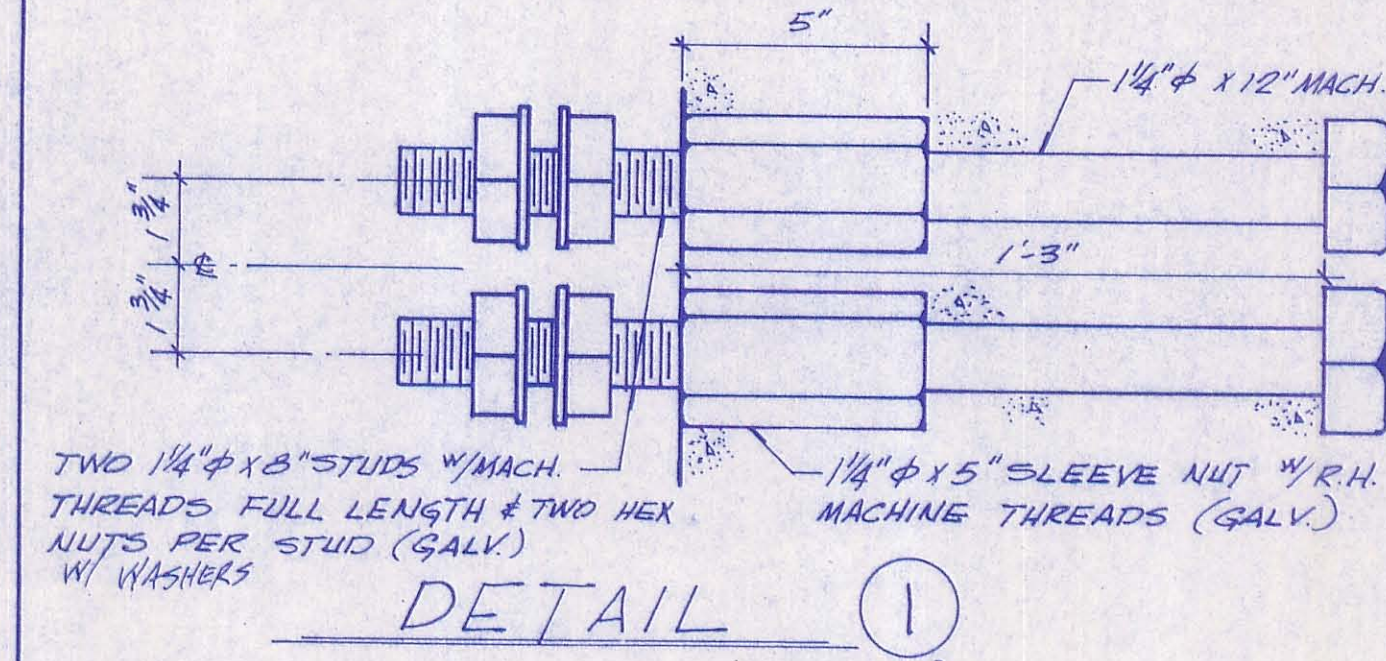
TYP. CROSS SECTION



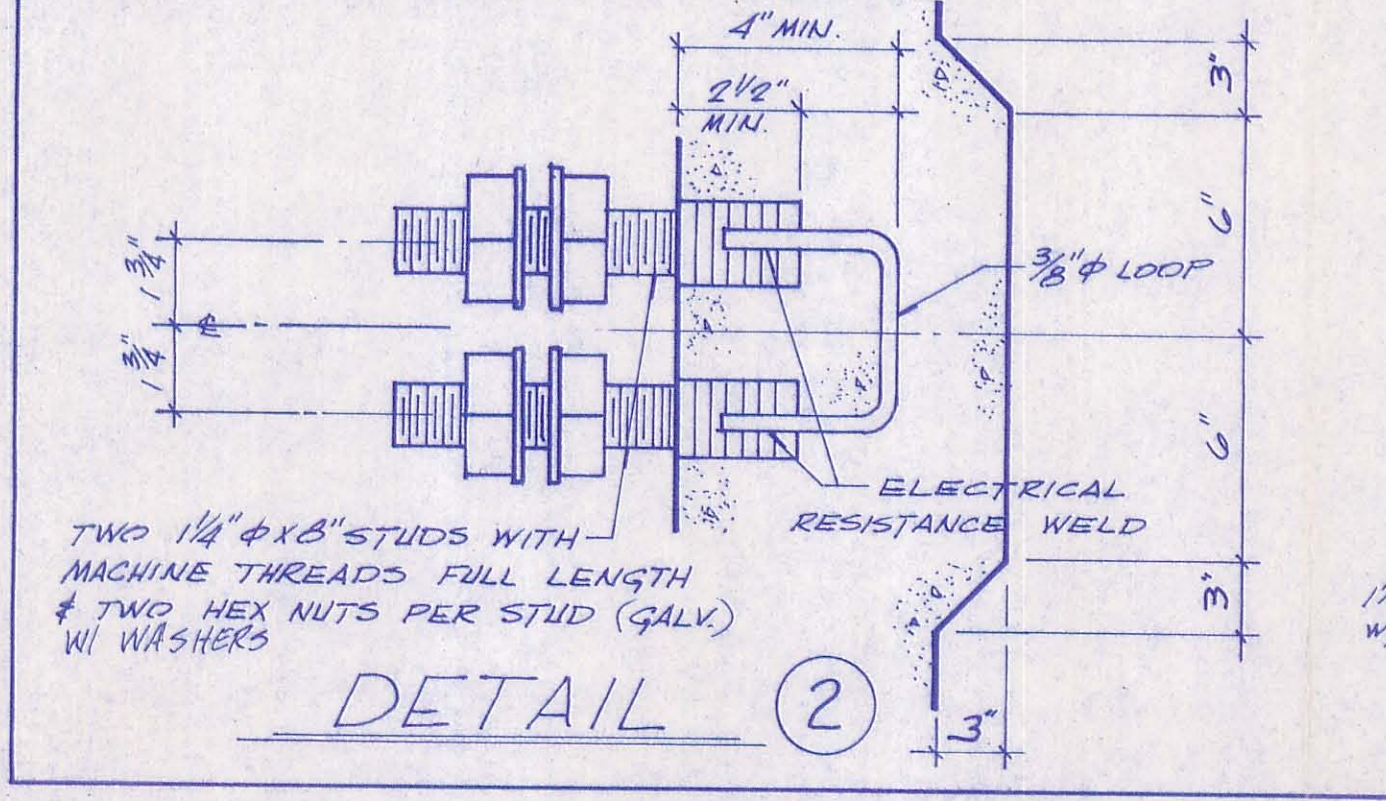
BEAM PLAN ~ No 1#7



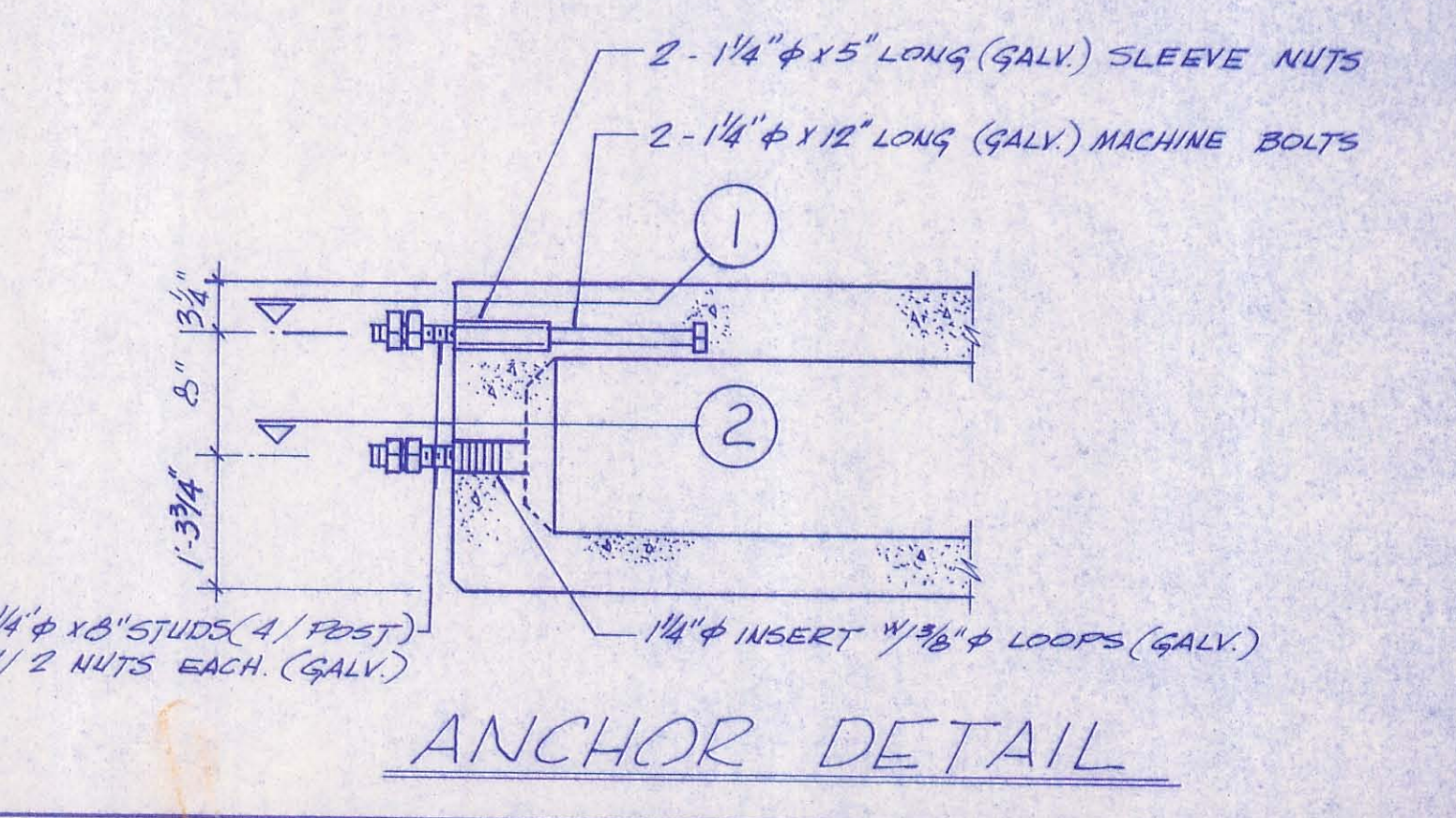
BEAM PLAN ~ No 2,3,4,5 #6



DETAIL 1



DETAIL 2



ANCHOR DETAIL

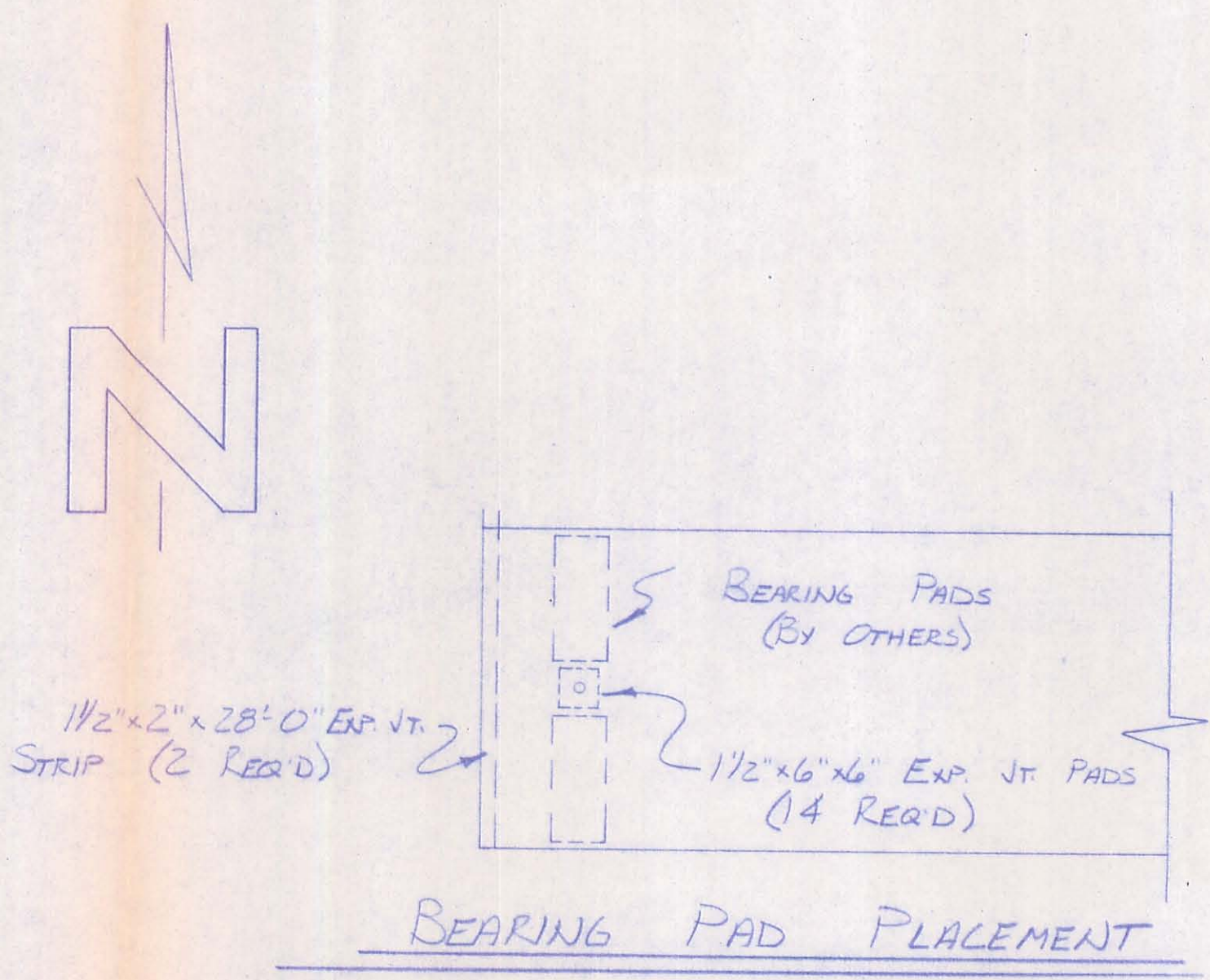
Total Camber = 1 3/4" as per note on sheet 7/8 of plans.

Approved: 10-22-84  
Richard A. Bruce  
Deputy Co. Engineer

- NOTES:
1. CONC. STR. AT TIME OF PRESTRESSING = 4000 P.S.I. @ 28 DAYS = 5500 P.S.I.
  2. DETENSION STRAND SYMMETRICALLY ABOUT CENTER LINE
  3. WATERPROOF BEAM ENDS
  4. OMIT KEYWAY ON EXTR FACE OF EXTR BEAMS
  5. LOADING = HS-20-44
  6. BEAM WEIGHT = 48780 lbs.
  7. TOP SURFACE OF BEAMS GIVEN A FLAT FLOAT FINISH.

Changes Are Noted As Different From O.D.O.T. Std. Dwg. P.S.B.D.-1  
Change Notes: -81 And Are Varied Per. Note On Dwg. P.S.B.D.-1-81 Sht. 2 of 4

REVISIONS		Br. No. 59-0.97 Logan Co., Ohio	
NO.	DATE BY	Contractor - Wren Reese, Inc.	
1.		SCALE NONE	PRESTRESS SERVICES, INC.
2.		DATE 10-9-84	Decatur Indiana
3.		DRAWN BY B.A.	JOB NO. 4544
4.		CHECKED BY J.R.H.	DRAWING NO. SH. 1 of 1



BEARING PAD PLACEMENT

•	(63'-0")	1	(48780 lbs)	•
•		2		•
•		3		•
•		4	1" x 12'-0" TIE ROD (6 REQ'D) (GALV)	•
•		5		•
•		6	#6 x 3'-3" Dowel Pins (14 REQ'D)	•
•		7		•

ABUTMENT #1

ABUTMENT #2

BEAM LAYOUT

P.C. # 9244

**PRESTRESS SERVICES, INC.**

---

October 16, 1984

P.O. Box 111  
Decatur, Indiana 46733  
Phone (219) 724-7117

Logan County Engineer's Office  
P.O. Box 427  
Bellefontaine, OH. 43311

RECEIVED  
OCT 19 1984  
LOGAN COUNTY  
ENGINEER

Attention: Mr. Rick Bruce  
County Bridge Engineer

RE: Bridge No. 59-0.97  
Logan County, Ohio

Mr. Bruce,

Enclosed please find three (3) copies of the shop details of the prestressed concrete bridge beams for the above listed project. Please review and return one (1) copy with any revisions noted.

If you have any questions or comments please contact me at your earliest convenience.

Very truly yours,

  
James R. Houston

encl.

JRH:ea

cc: Bill Roberts  
Wren Reese  
File: 4544  
JRH