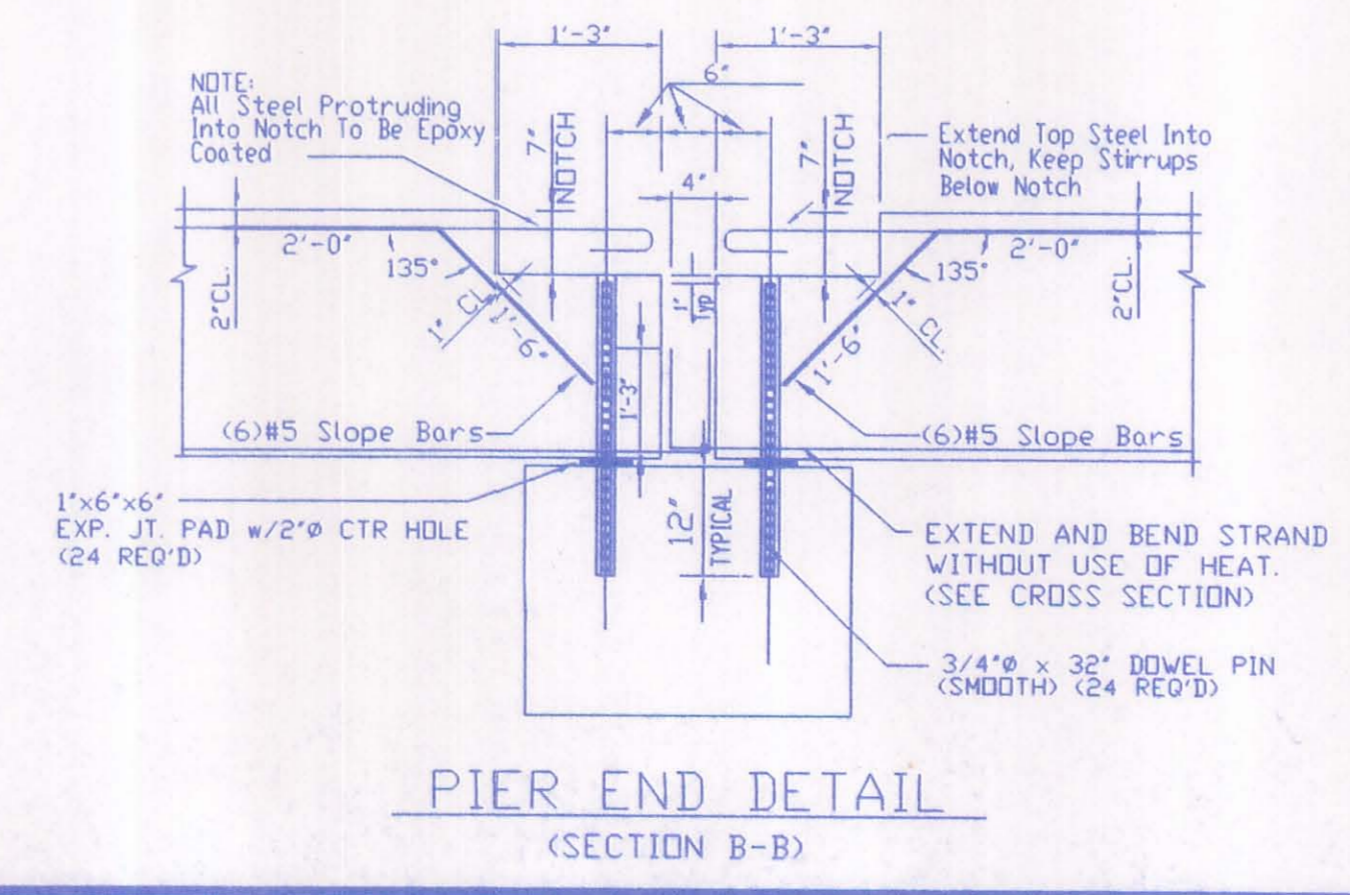
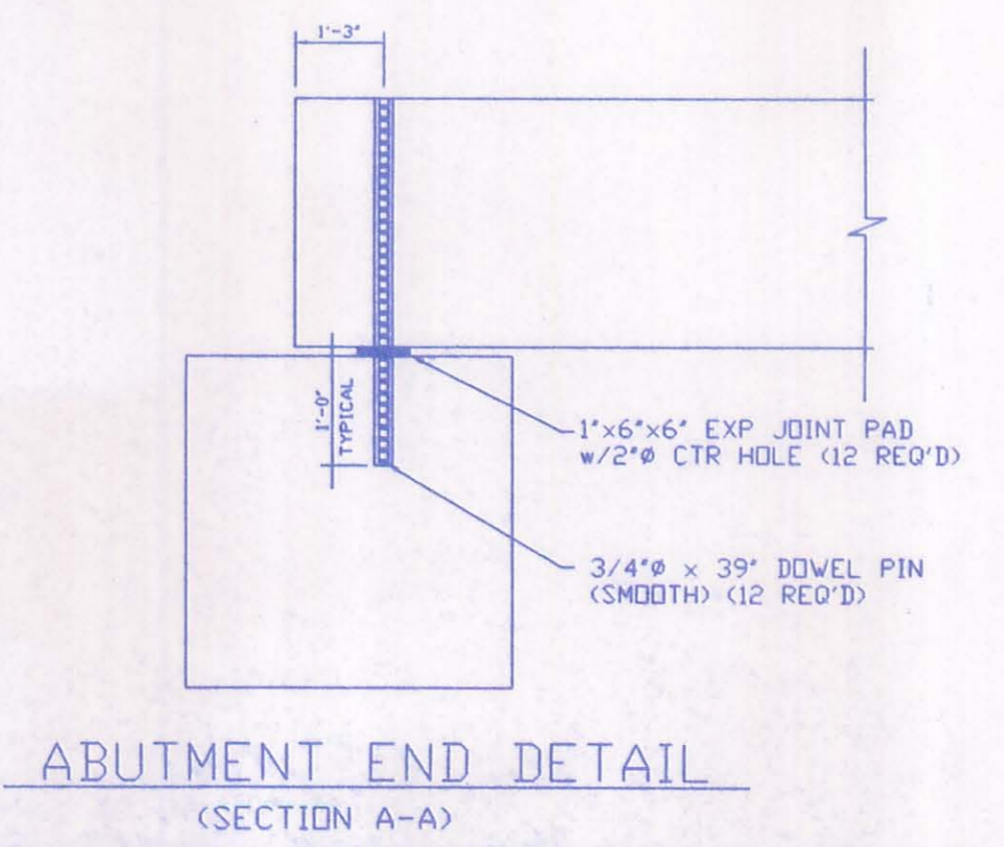
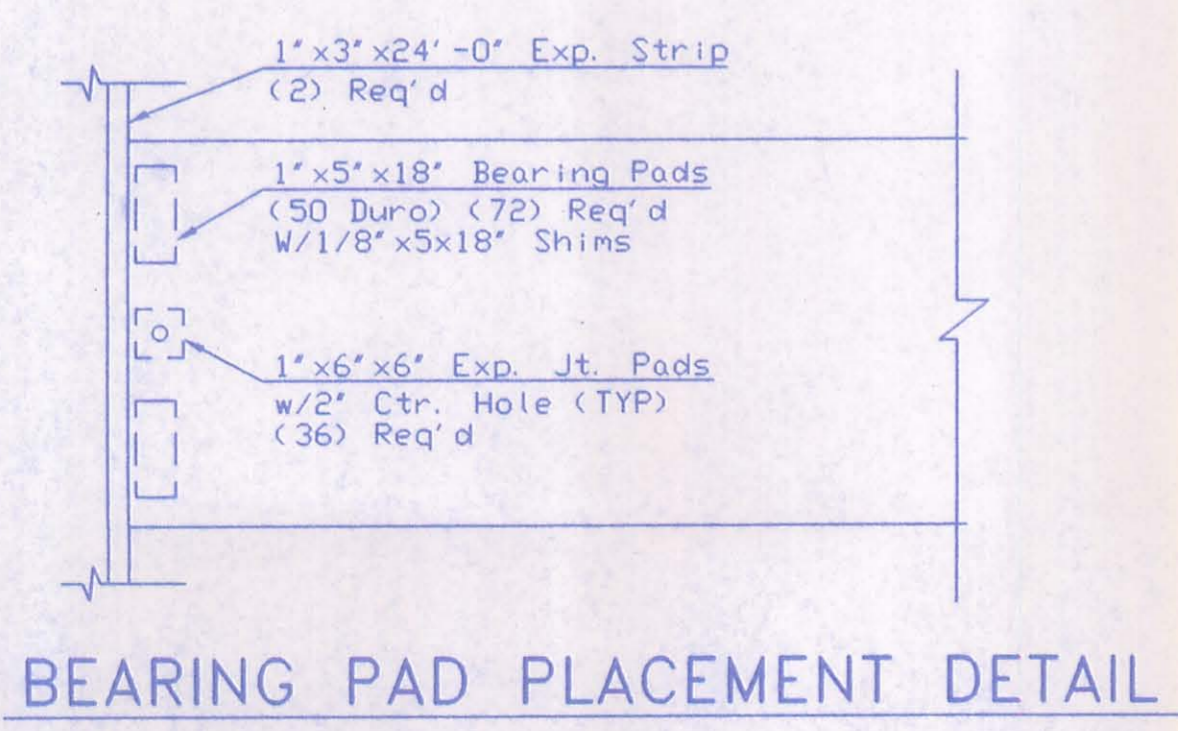
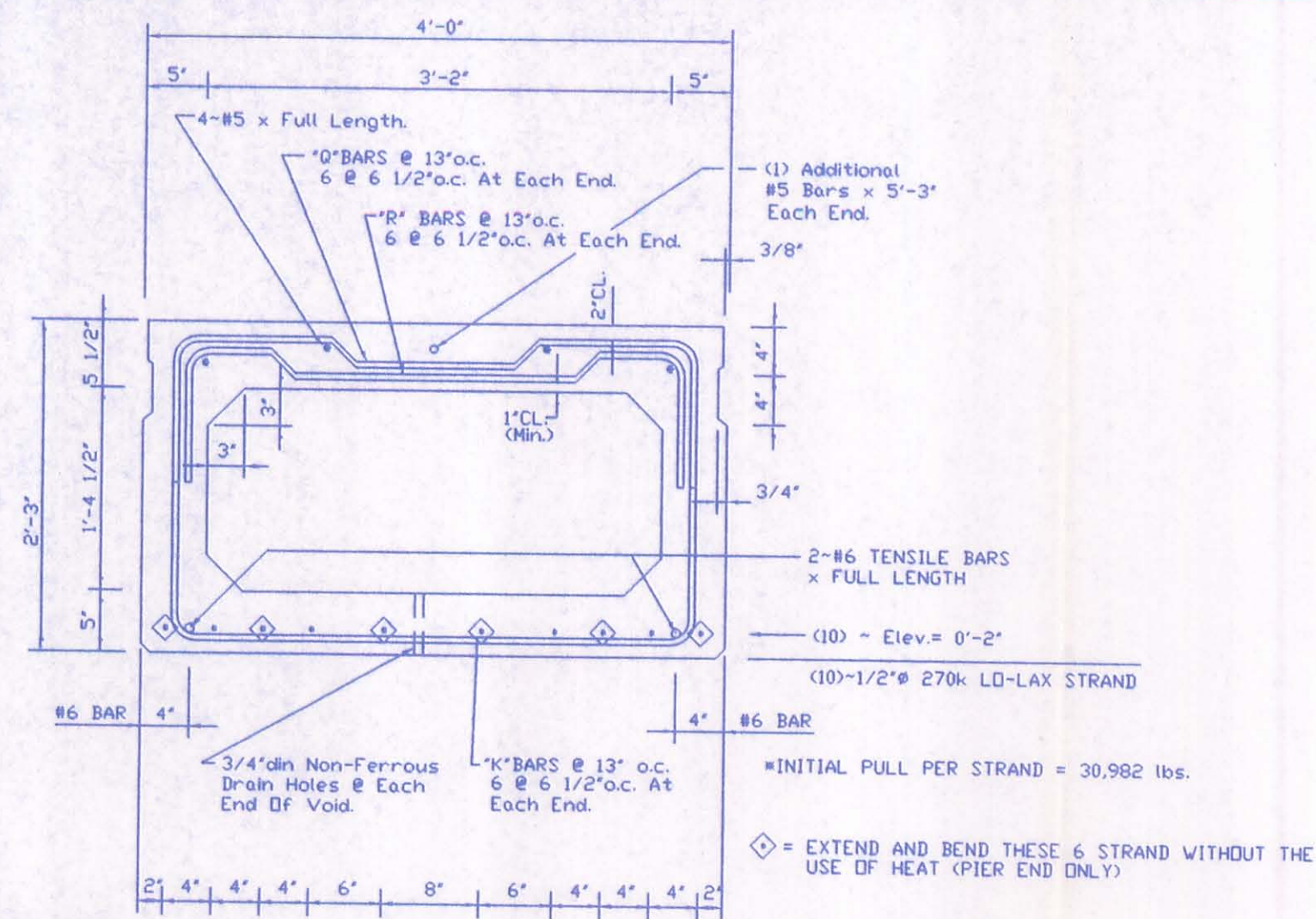


BEAM LAYOUT

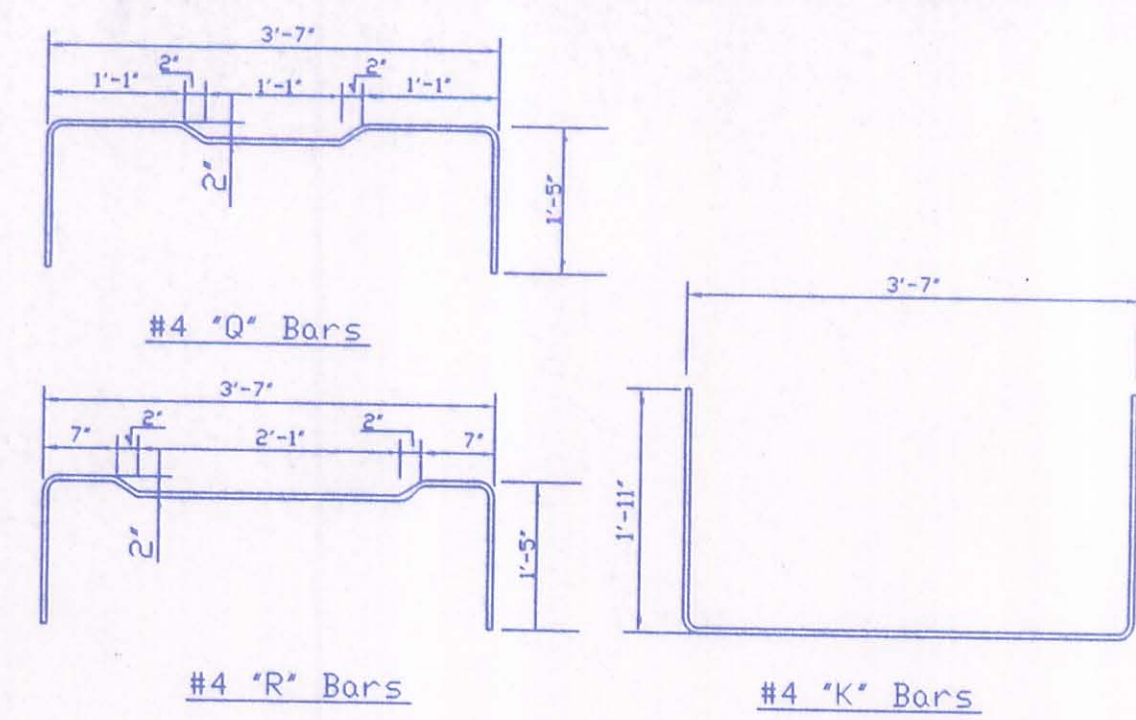


REVISIONS			Project: LOGAN COUNTY JOB	
NO.	Description	Date By	Br. No:	LOG-52-2.38
			County, State:	LOGAN COUNTY, OHIO
			Location:	LOGAN COUNTY
			Contractor:	COUNTY FORCES
			Fabrication Plant:	PRESTRESS SERVICES INC.
			DRAFTING OFFICE:	PRESTRESS SERVICES INDIANA
Date:	5-15-98		Ph#	(219) 724-7117
Drawn By:	D.J.S.		Fax #	(219) 724-3349
Checked By:	<i>[Signature]</i>		Job No.	4404
P.C.#	9427		Drawing No.	1 OF 3

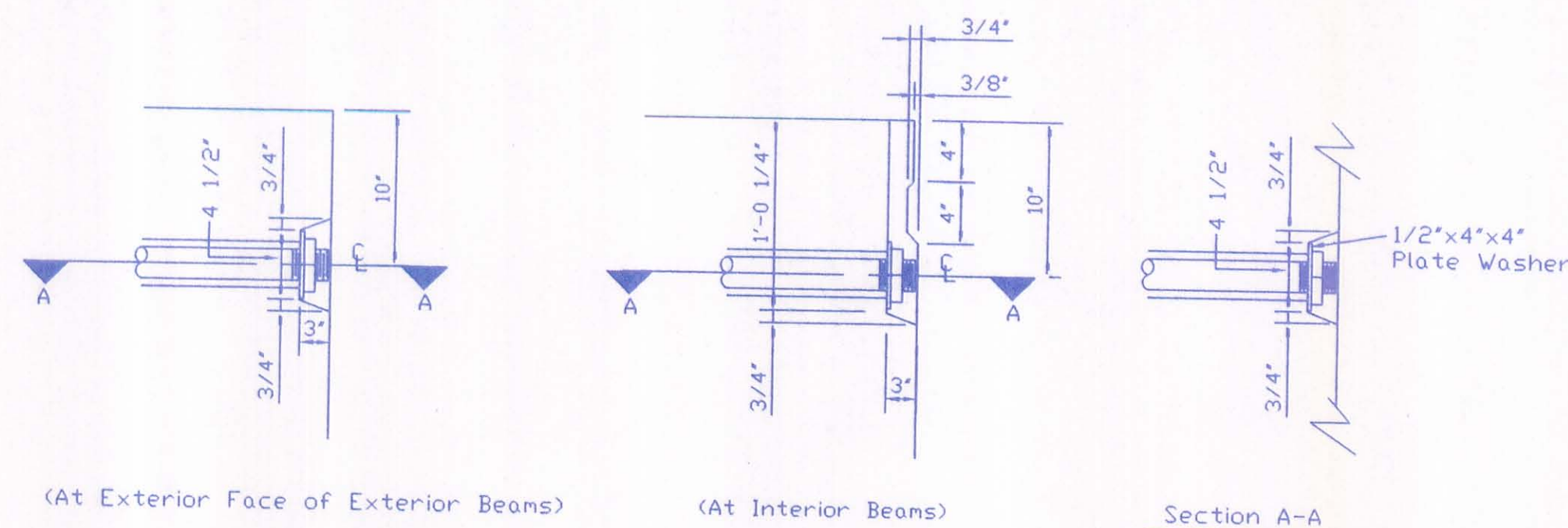
C:\Bridges\4404-1.dwg
 Tue Jul 07 09:21:46 1998



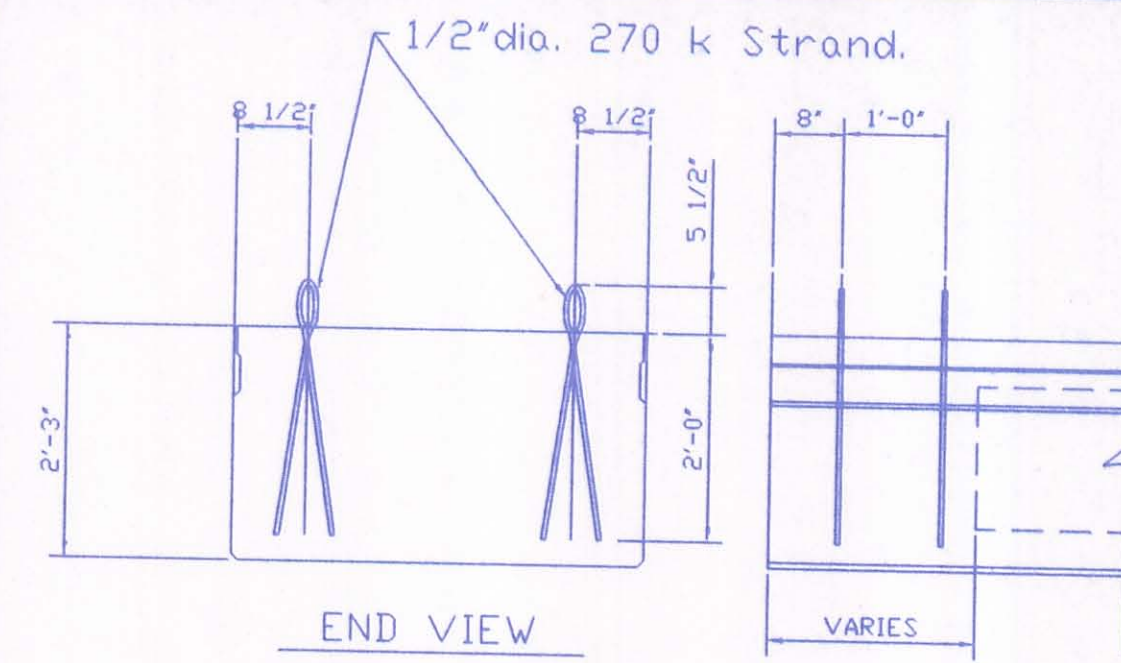
Typ. Cross Section.



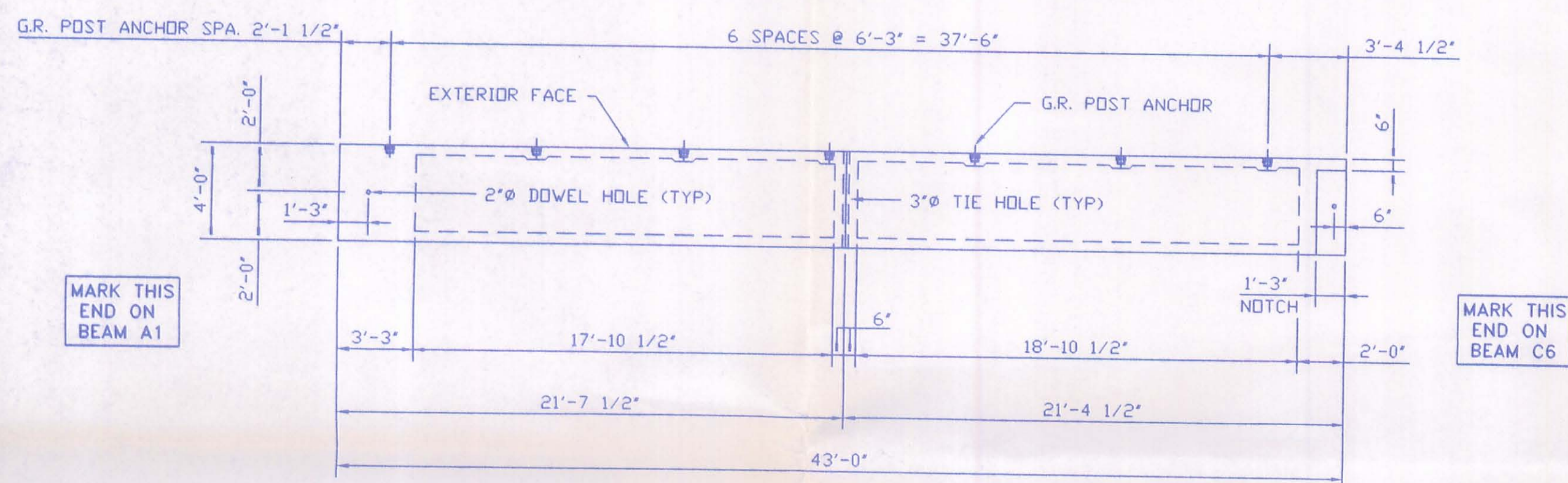
TYP. STEEL LAYOUT
(ALL STEEL TO BE GRADE 60 STEEL)



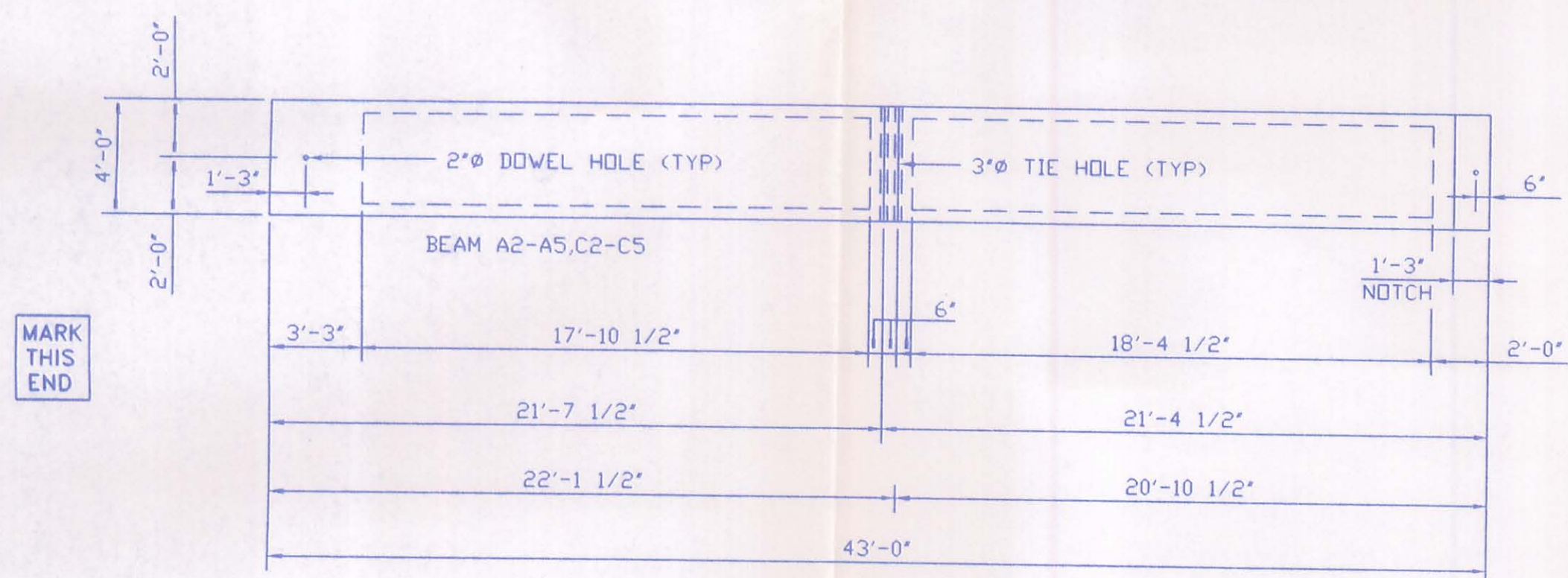
TIE ROD HAND HOLES



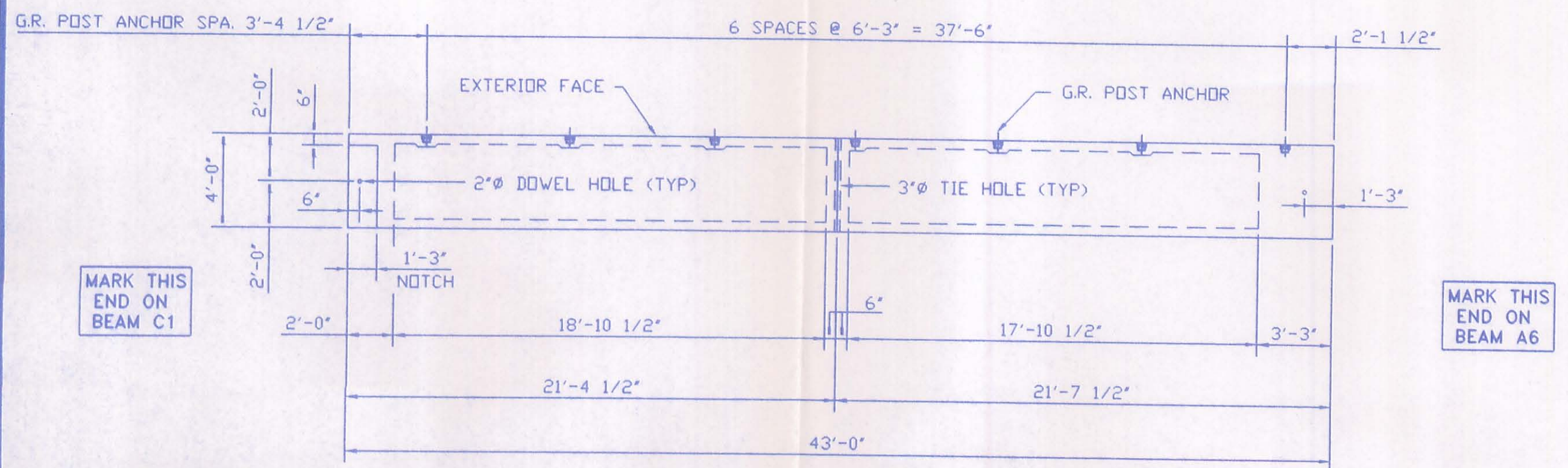
Lifting Detail



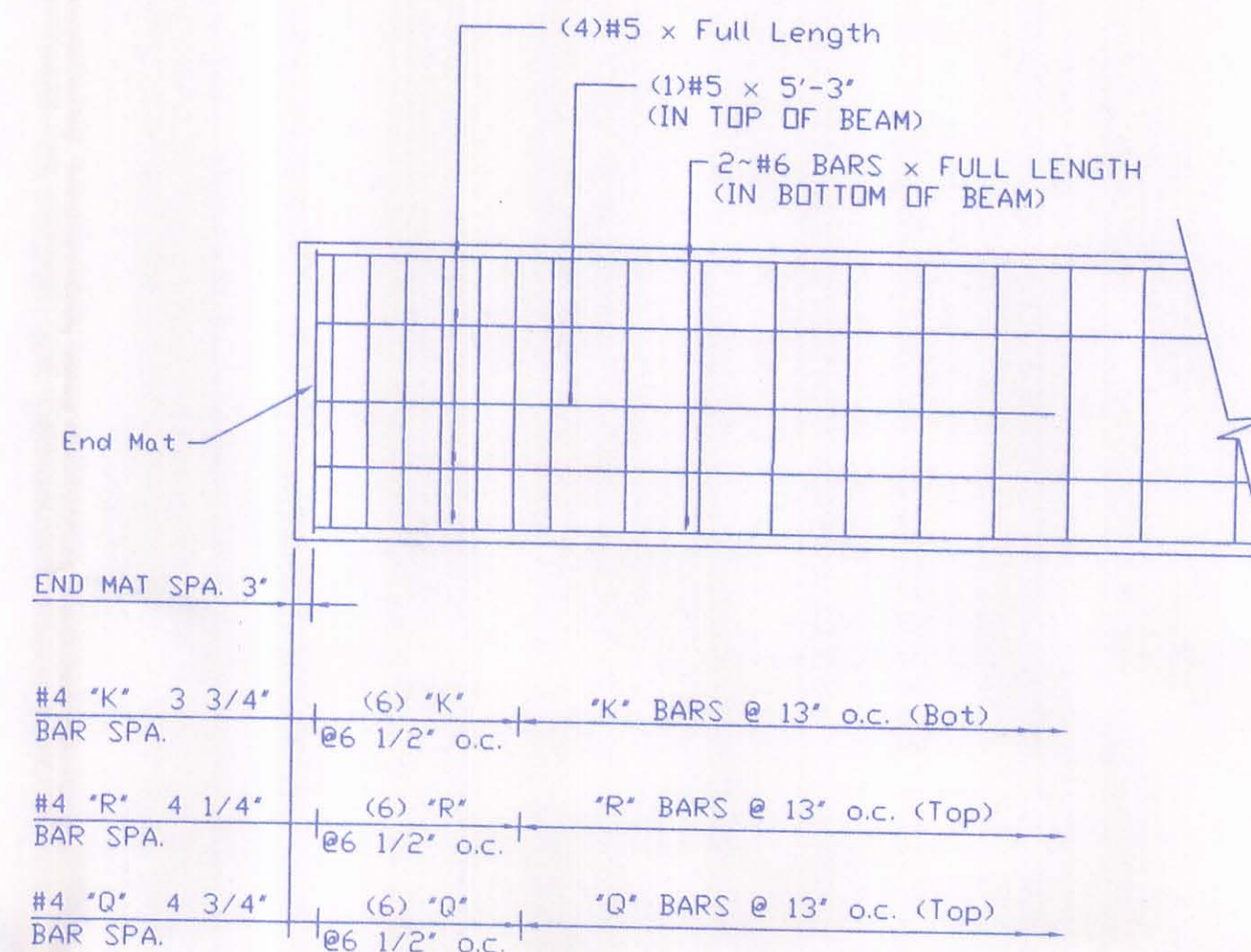
BEAM PLAN NO. A1 AND C6
(CASTING WEIGHT = 34,755 lbs) (SHIPPING WEIGHT = 35,855 lbs)



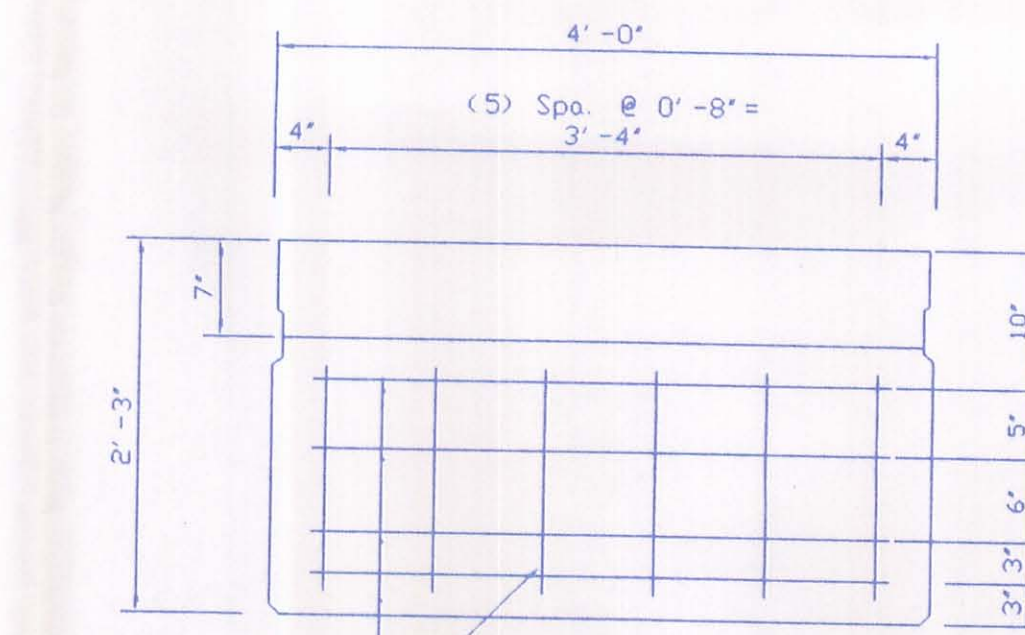
BEAM PLAN NO. A2-A5 AND C2-C5
(CASTING WEIGHT = 34,685 lbs) (SHIPPING WEIGHT = 34,685 lbs)



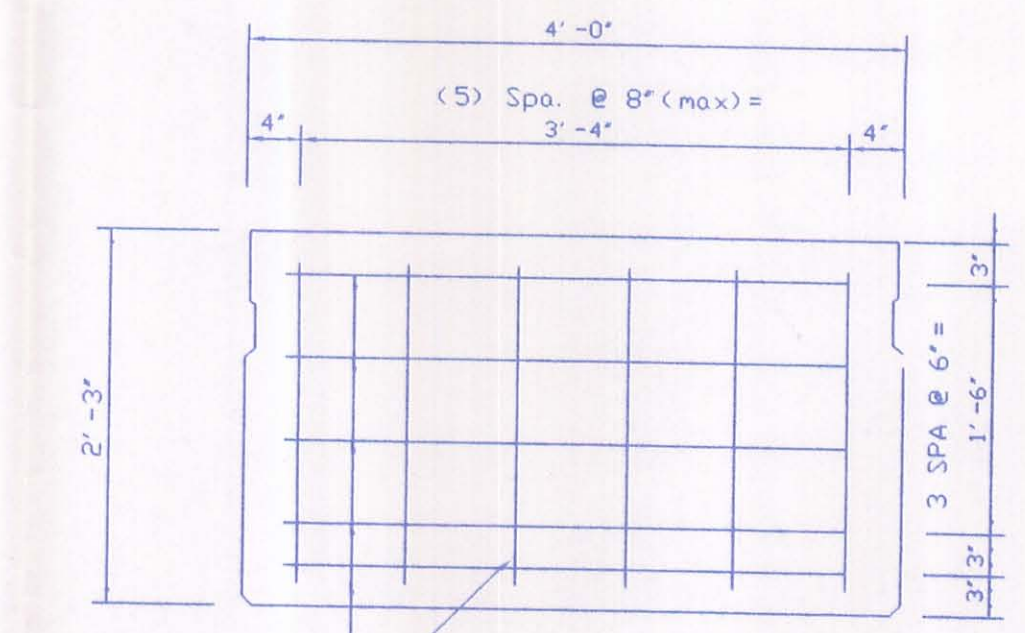
BEAM PLAN NO. A6 AND C1
(CASTING WEIGHT = 34,755 lbs) (SHIPPING WEIGHT = 35,855 lbs)



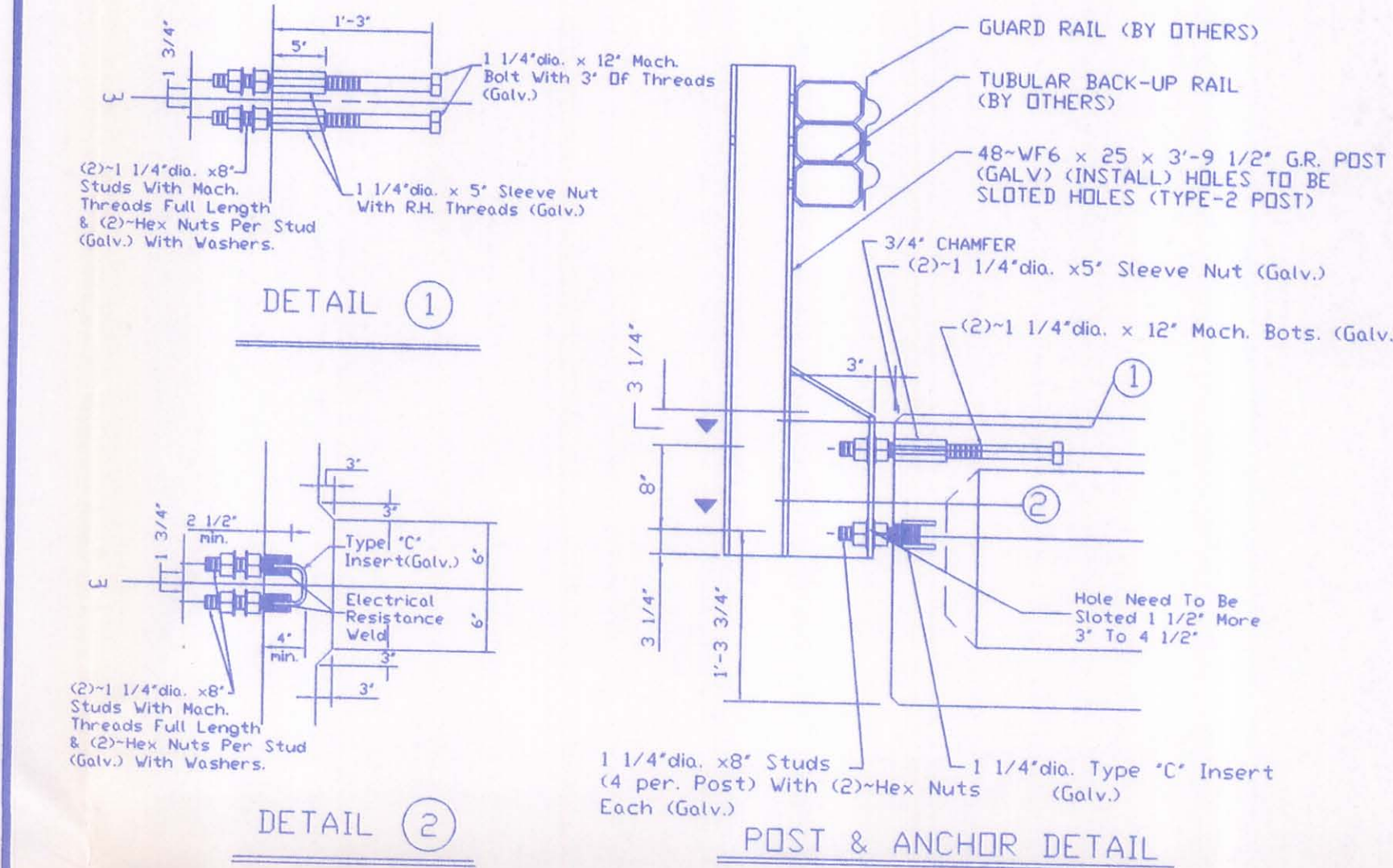
BEAM END REINFORCING DETAIL



End Mat Detail
(BEAM ENDS WITH NOTCH)



End Mat Detail
(BEAM ENDS WITHOUT NOTCH)



POST & ANCHOR DETAIL

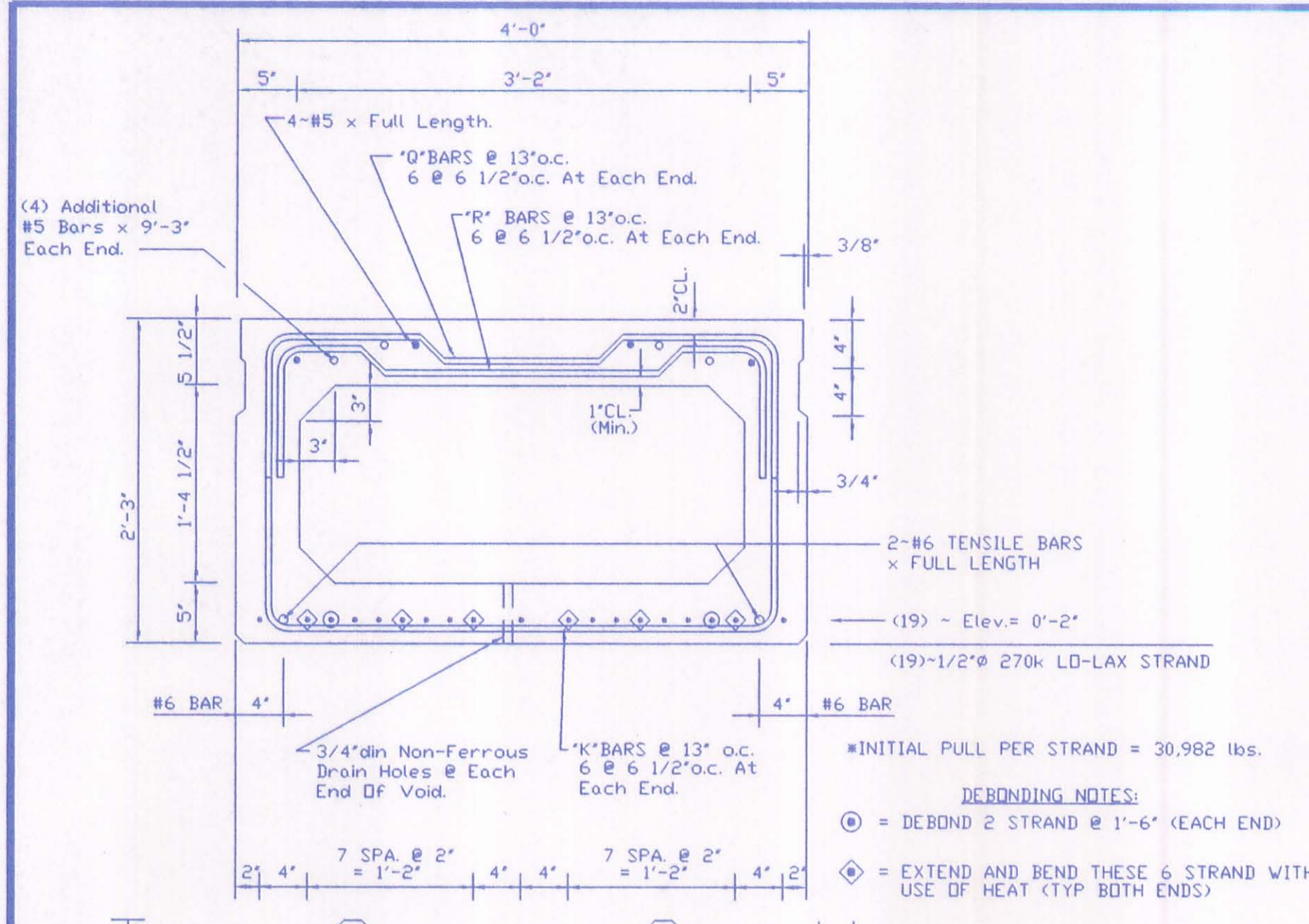
NOTES:

1. CONCRETE STRENGTH AT TIME OF PRESTRESSING IS 4000 P. S. I. AND AT 28 DAYS IS 5500 P. S. I.
2. DETENSION STRAND SYMMETRICALLY ABOUT CENTER LINE
3. LOADING= HS-20-44 & ALTERNATE MILITARY.
4. BEAM WEIGHT=SEE BEAM LAYOUT
5. TOP SURFACE OF BEAMS GIVEN A LIGHT BROOM FINISH.
6. ANTICIPATED CAMBER AS SHOWN ON PROJECT PLANS IS: NOT GIVEN
7. WATERPROOF BEAM ENDS AT ABUTMENTS ONLY
8. OMIT KEYWAY ON EXTERIOR FACE OF EXTERIOR BEAMS.
9. SANDBLAST ALL KEYWAYS
10. D. C. I. TO BE ADDED TO THE CONCRETE AT A RATE OF 4 GAL. PER CU. YD.
11. ALL STEEL EXTENDING OUTSIDE OF BEAM TO BE EPOXY COATED

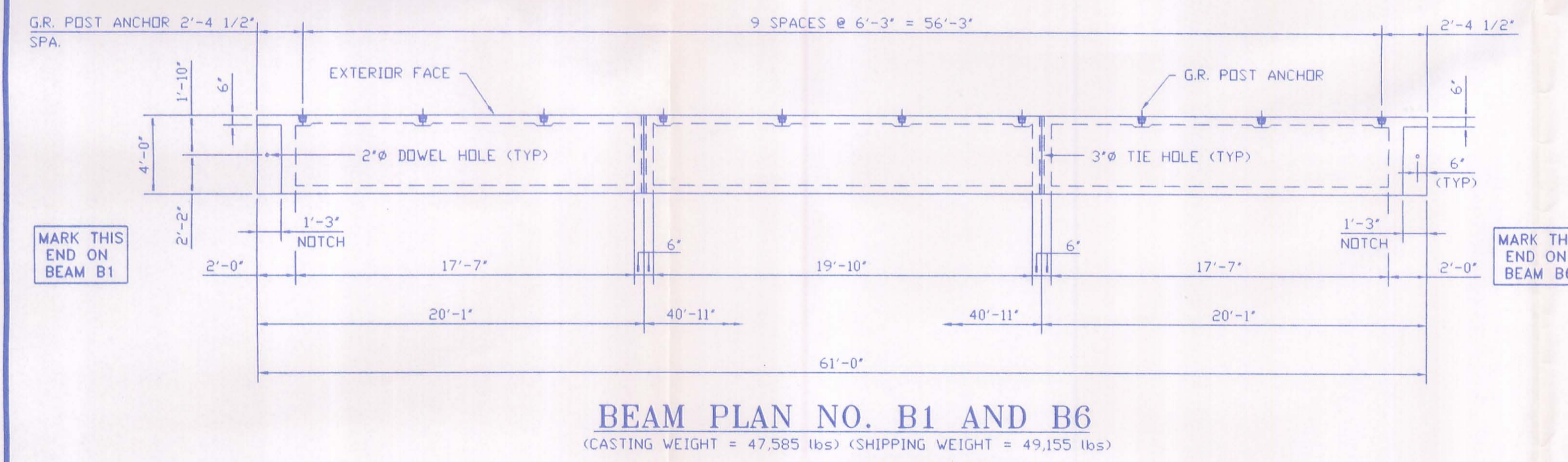
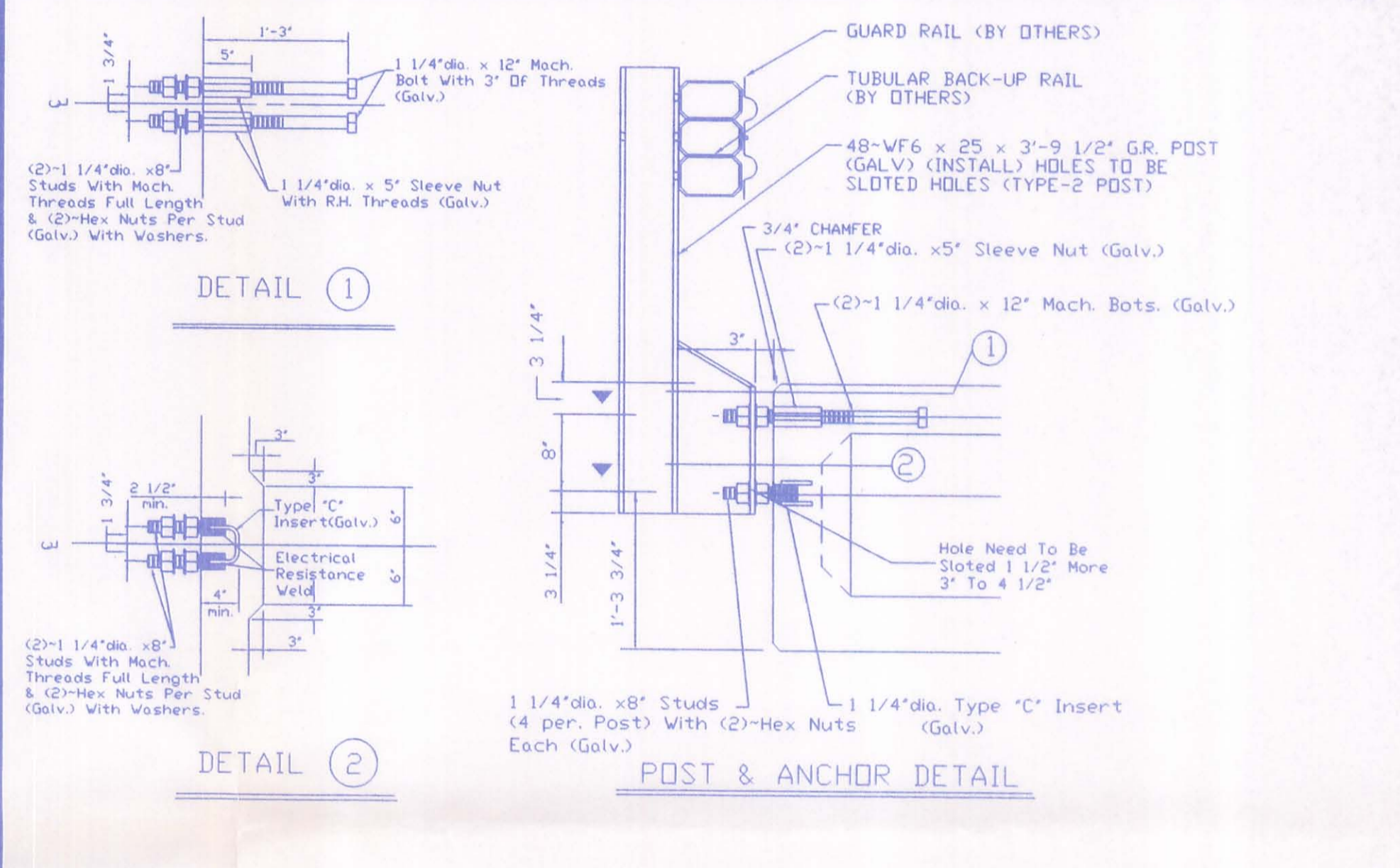
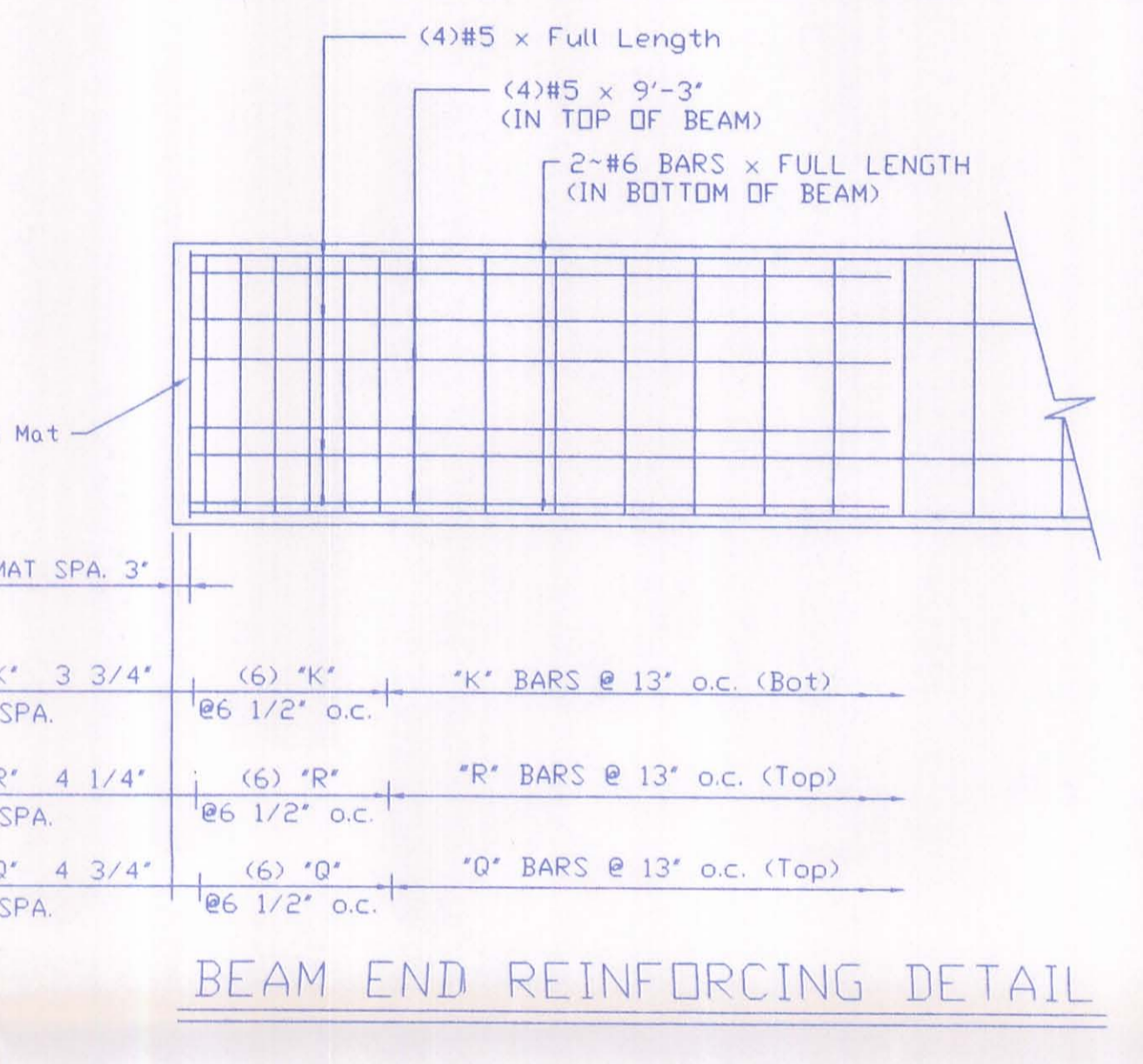
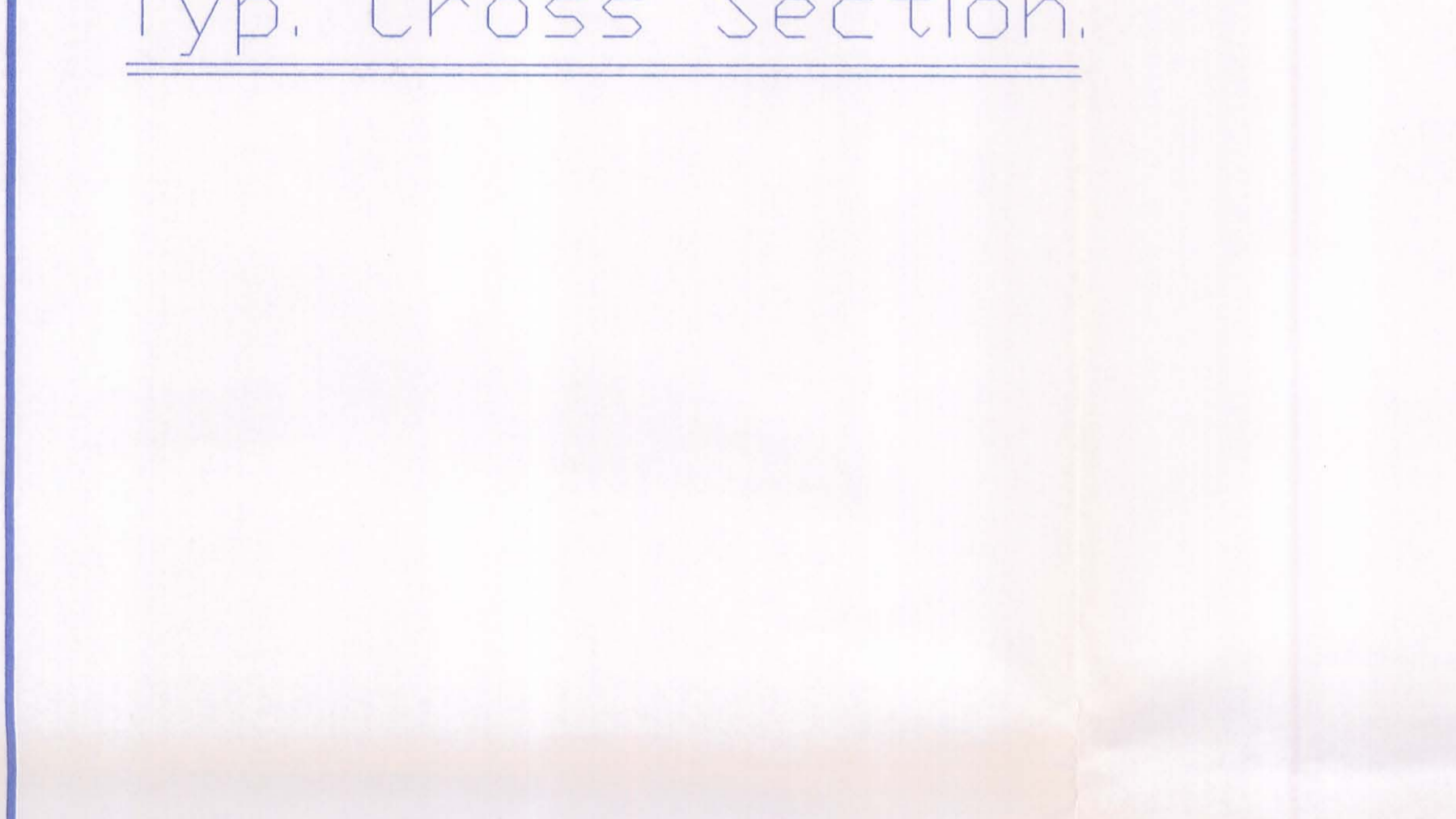
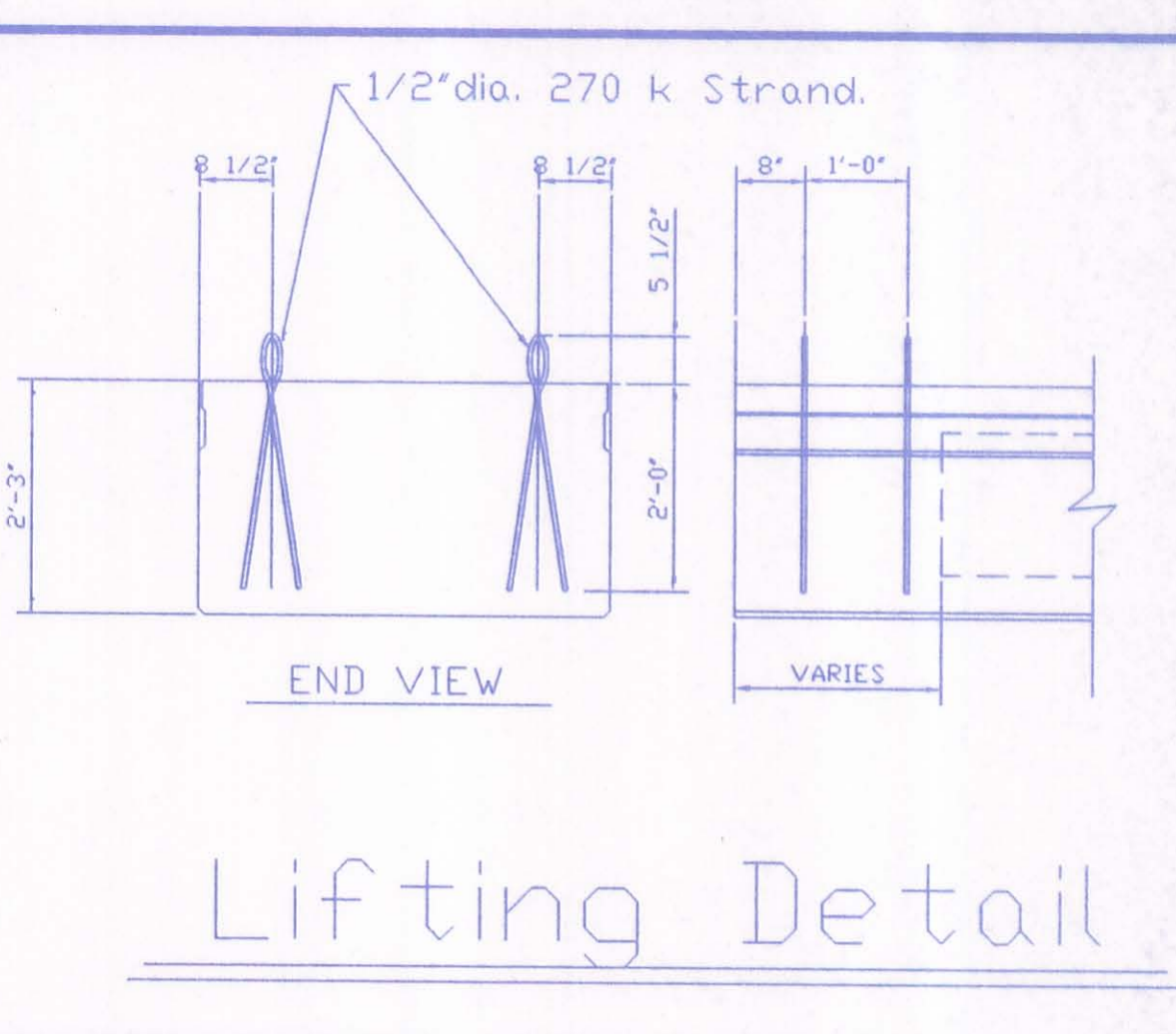
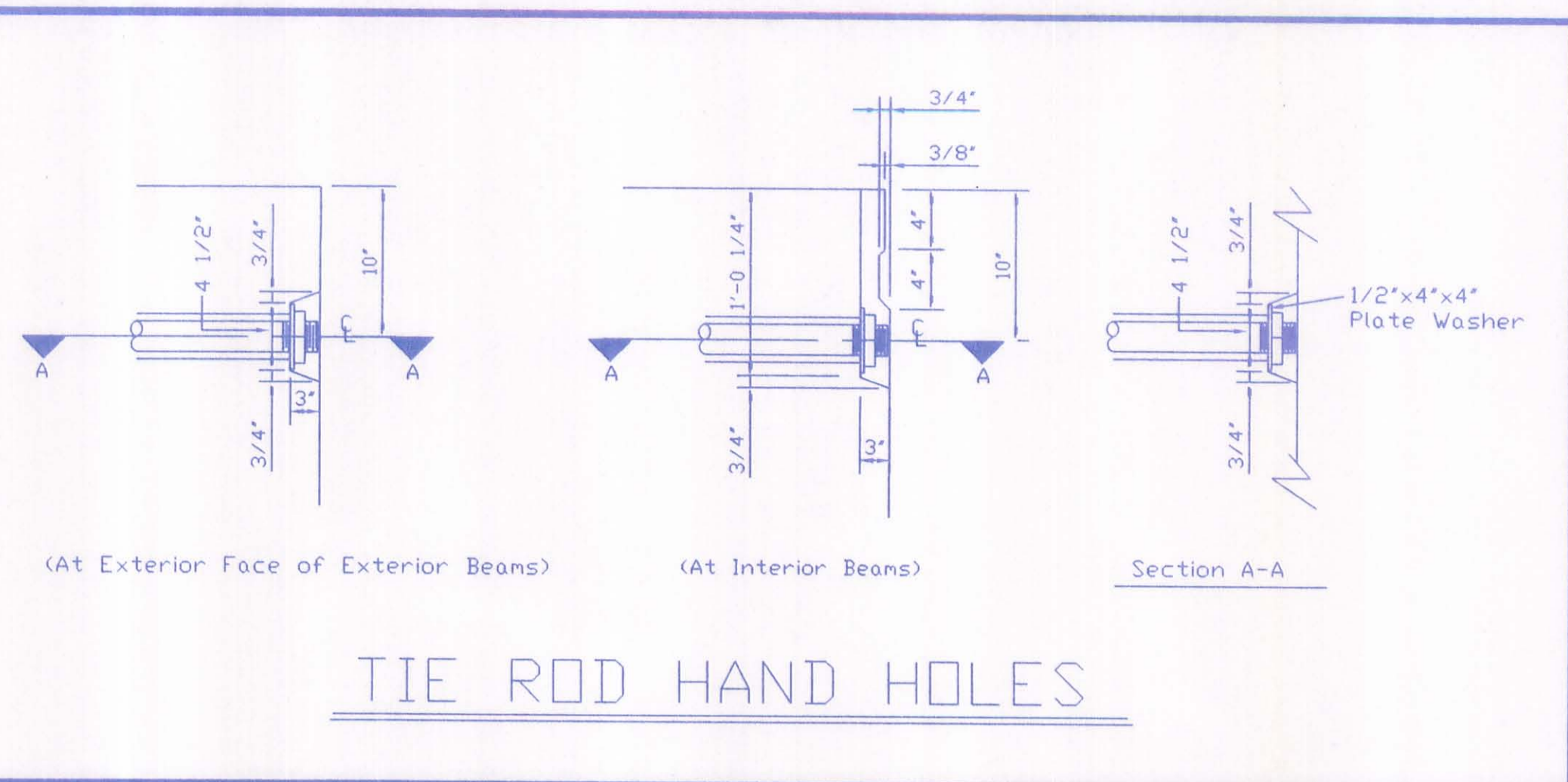
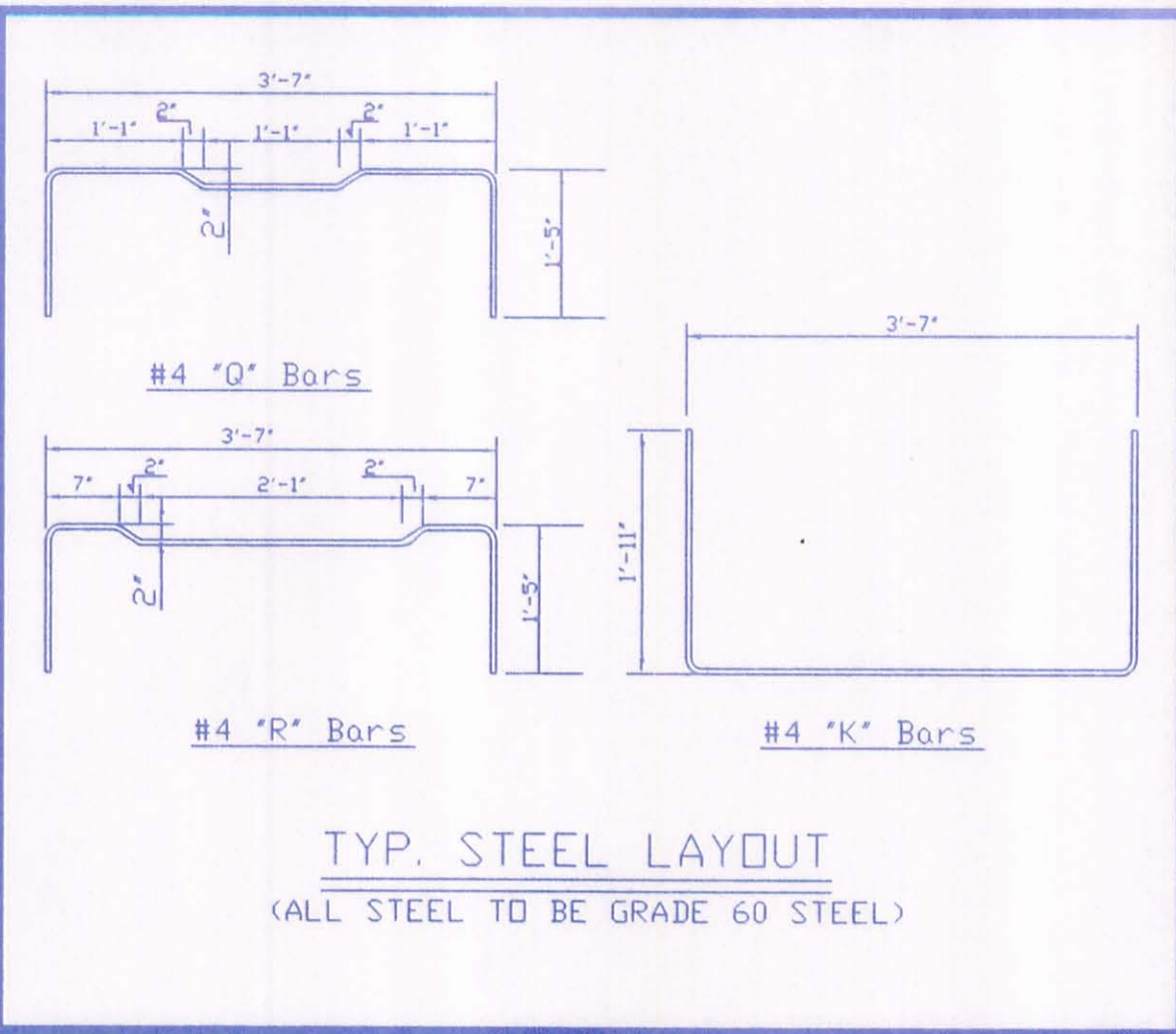
CHANGE NOTES

- CHANGES ARE NOTED AS DIFFERENT FROM O.D.D.T. STD. DWG. P.S.B.D.-1-95 AND ARE VARIED PER. NOTE ON P.S.B.D.-1-95 SHT. 2 OF 4.
1. 3/4" Keyway To 4/4" Keyway.
 2. Tie Rod Hand Hole From 9" To 10".

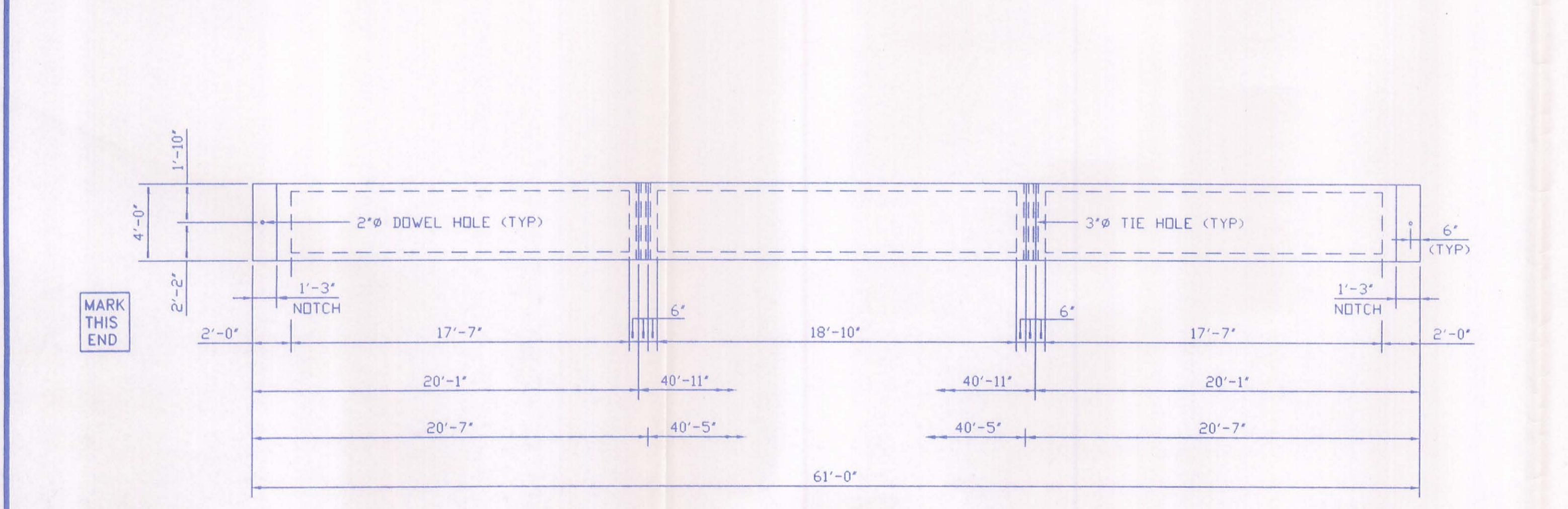
REVISIONS			Project Information	
NO.	Description	Date By	Proj.	Br. No.
			LOGAN COUNTY JOB	LOG-52-2.38
			County, State: LOGAN COUNTY, OHIO	
			Location: LOGAN COUNTY	
Date: 5-15-98			Contractor: COUNTY FORCES	
Drawn By: D.J.S.			Fabrication Plant:	
Checked By: [Signature]			DRAFTING OFFICE:	
P.C.# 9427			PRESTRESS SERVICES INC.	
			P.O. BOX 111, 7855 NW WINCHESTER ROAD	
			DECATUR, INDIANA 46733	
			PHONE #: (219) 724-7117	
			FAX #: (219) 724-3349	
Job No. 4404		Drawing No. 2 OF 3		



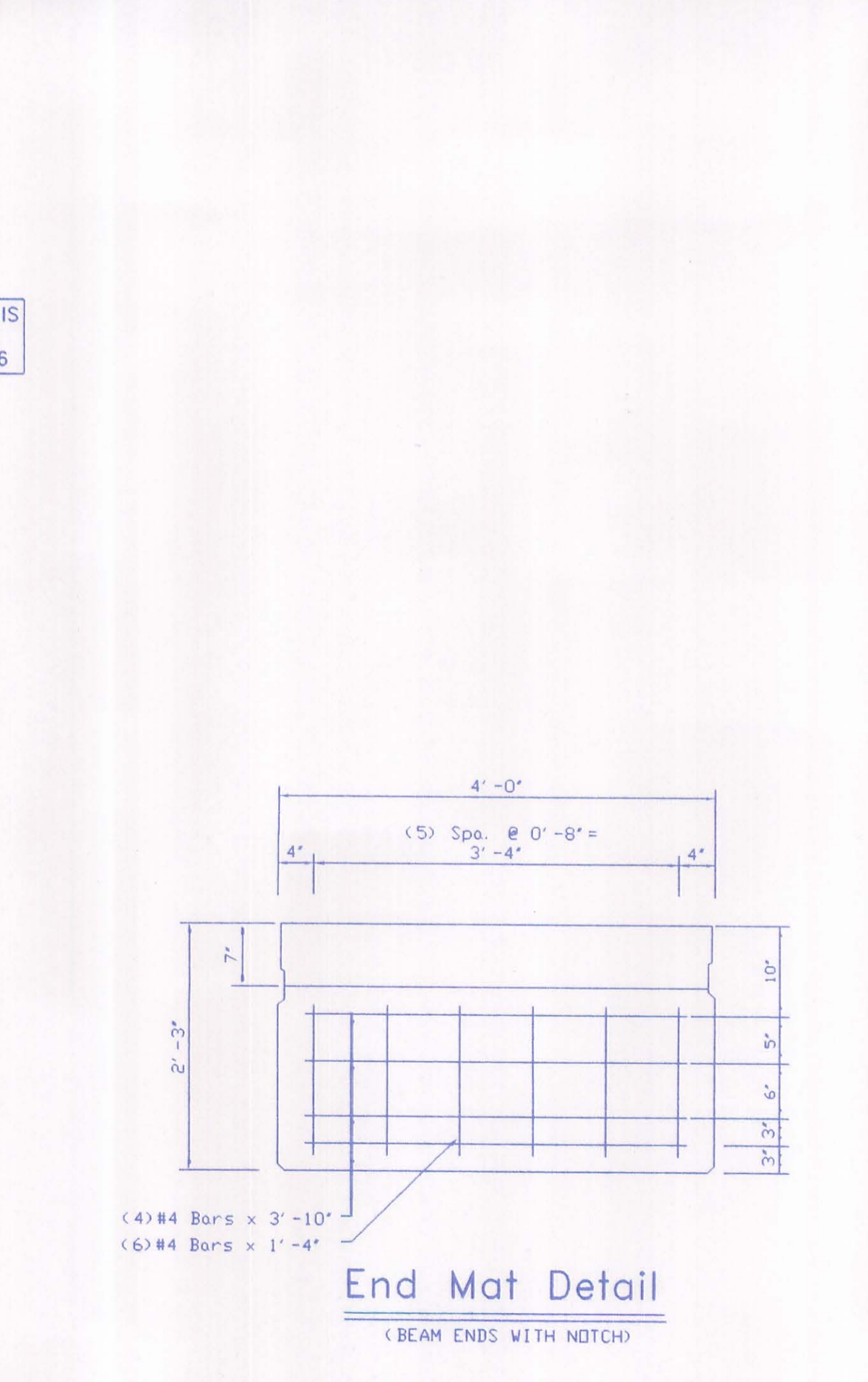
Typ. Cross Section.



BEAM PLAN NO. B1 AND B6
(CASTING WEIGHT = 47,585 lbs) (SHIPPING WEIGHT = 49,155 lbs)



BEAM PLAN NO. B2-B5
(CASTING WEIGHT = 47,570 lbs) (SHIPPING WEIGHT = 47,570 lbs)



- NOTES:
1. CONCRETE STRENGTH AT TIME OF PRESTRESSING IS 4000 P. S. I. AND AT 28 DAYS IS 5500 P. S. I.
 2. DETENSION STRAND SYMMETRICALLY ABOUT CENTER LINE
 3. LOADING= HS-20-44 & ALTERNATE MILITARY.
 4. BEAM WEIGHT=SEE BEAM LAYOUT
 5. TOP SURFACE OF BEAMS GIVEN A LIGHT BROOM FINISH.
 6. ANTICIPATED CAMBER AS SHOWN ON PROJECT PLANS IS: NOT GIVEN
 7. WATERPROOF BEAM ENDS AT ABUTMENTS ONLY
 8. OMIT KEYWAY ON EXTERIOR FACE OF EXTERIOR BEAMS.
 9. SANDBLAST ALL KEYWAYS.
 10. D. C. I. TO BE ADDED TO THE CONCRETE AT A RATE OF 4 GAL. PER CU. YD.
 11. ALL STEEL EXTENDING OUTSIDE OF BEAM TO BE EPOXY COATED
- CHANGES ARE NOTED AS DIFFERENT FROM D.D.O.T. STD. DWG. P.S.B.D.-1-95 AND ARE VARIED PER. NOTE ON P.S.B.D.-1-95 SHT. 2 OF 4.

CHANGE NOTES

REVISIONS			Proj. LOGAN COUNTY JOB	
NO.	Description	Date By	Br. No.	LOG-52-2.38
			County, State:	LOGAN COUNTY, OHIO
			Location:	LOGAN COUNTY
			Contractor:	COUNTY FORCES
			Fabrication Plant:	PRESTRESS SERVICES INC.
Date:	5-15-98		Drafting Office:	PRESTRESS SERVICES
Drawn By:	D.J.S.		Decatur, Indiana	Ph# (219) 724-7117
Checked By:			Decatur, Indiana	46733 Fax # (219) 724-3349
P.C.#	9427		Job No.	4404
			Drawing No.	3 OF 3