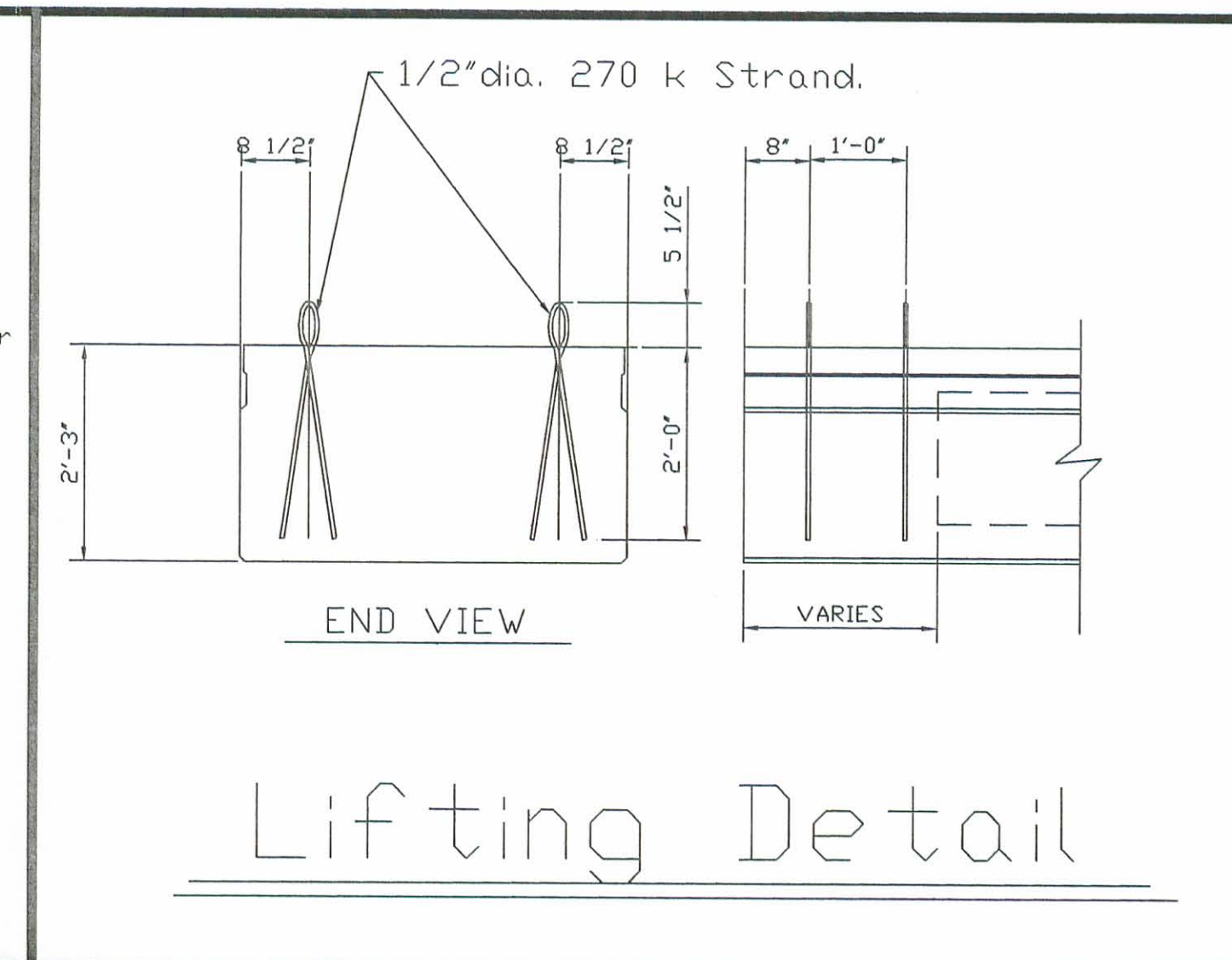
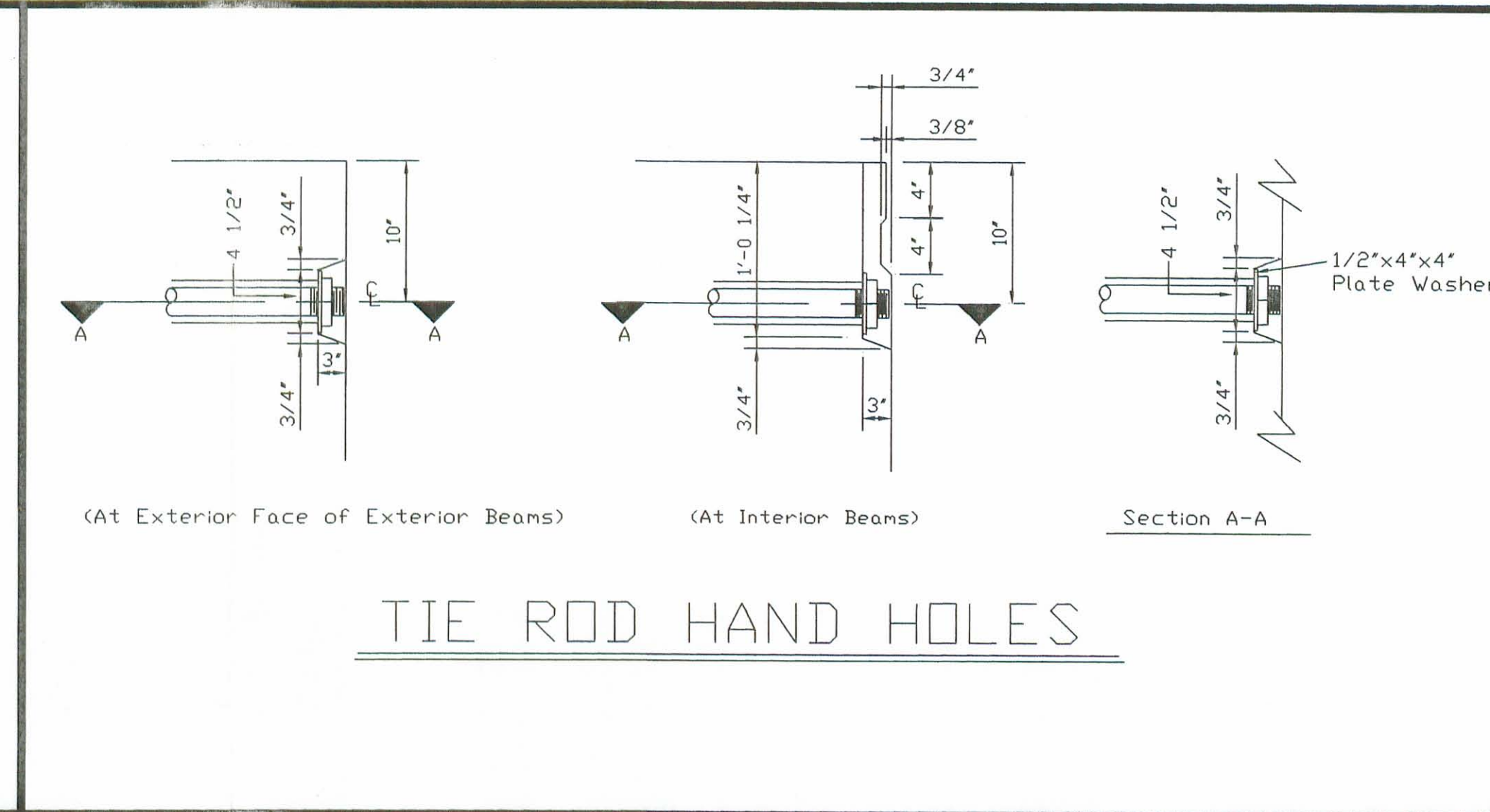
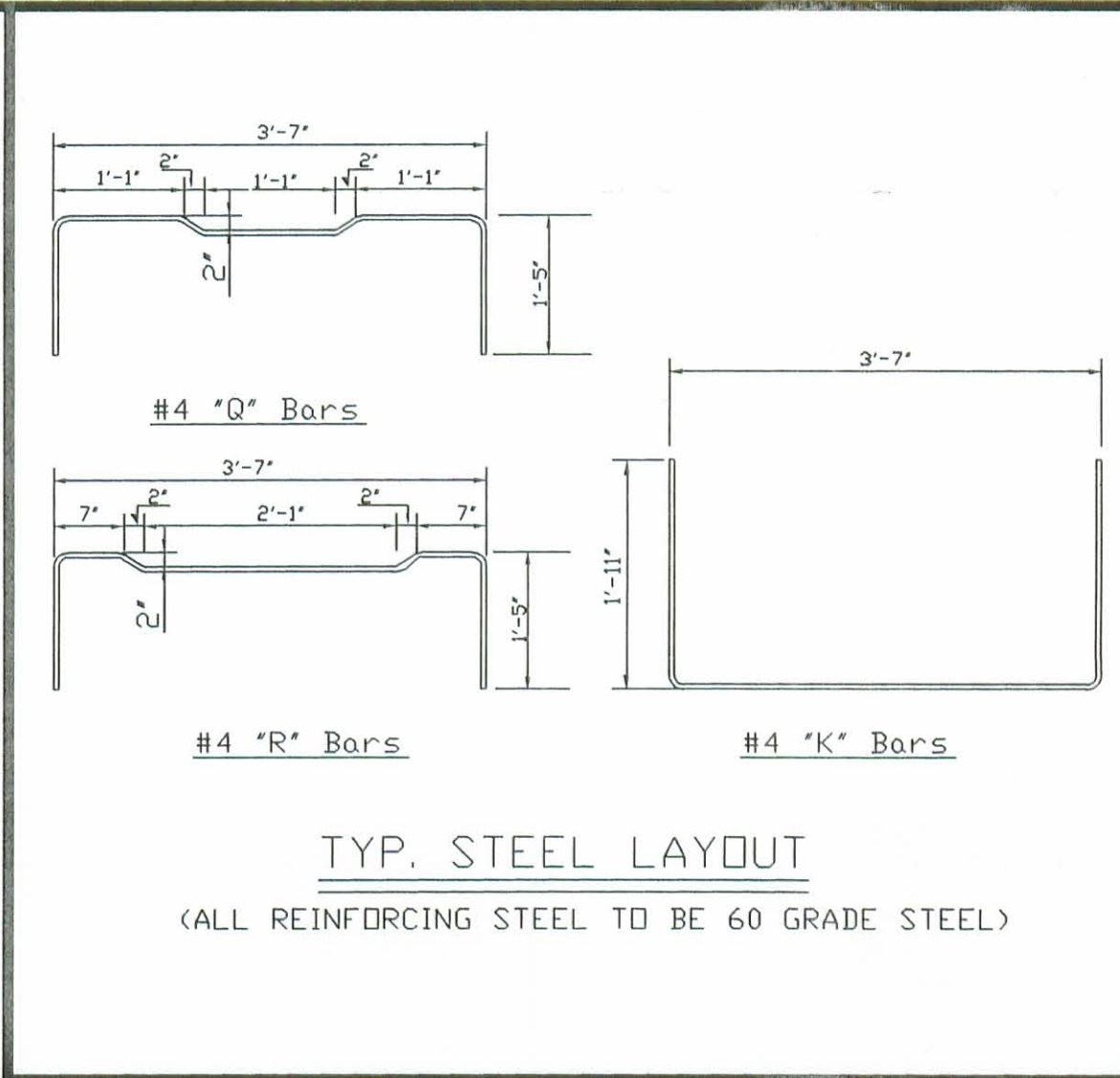
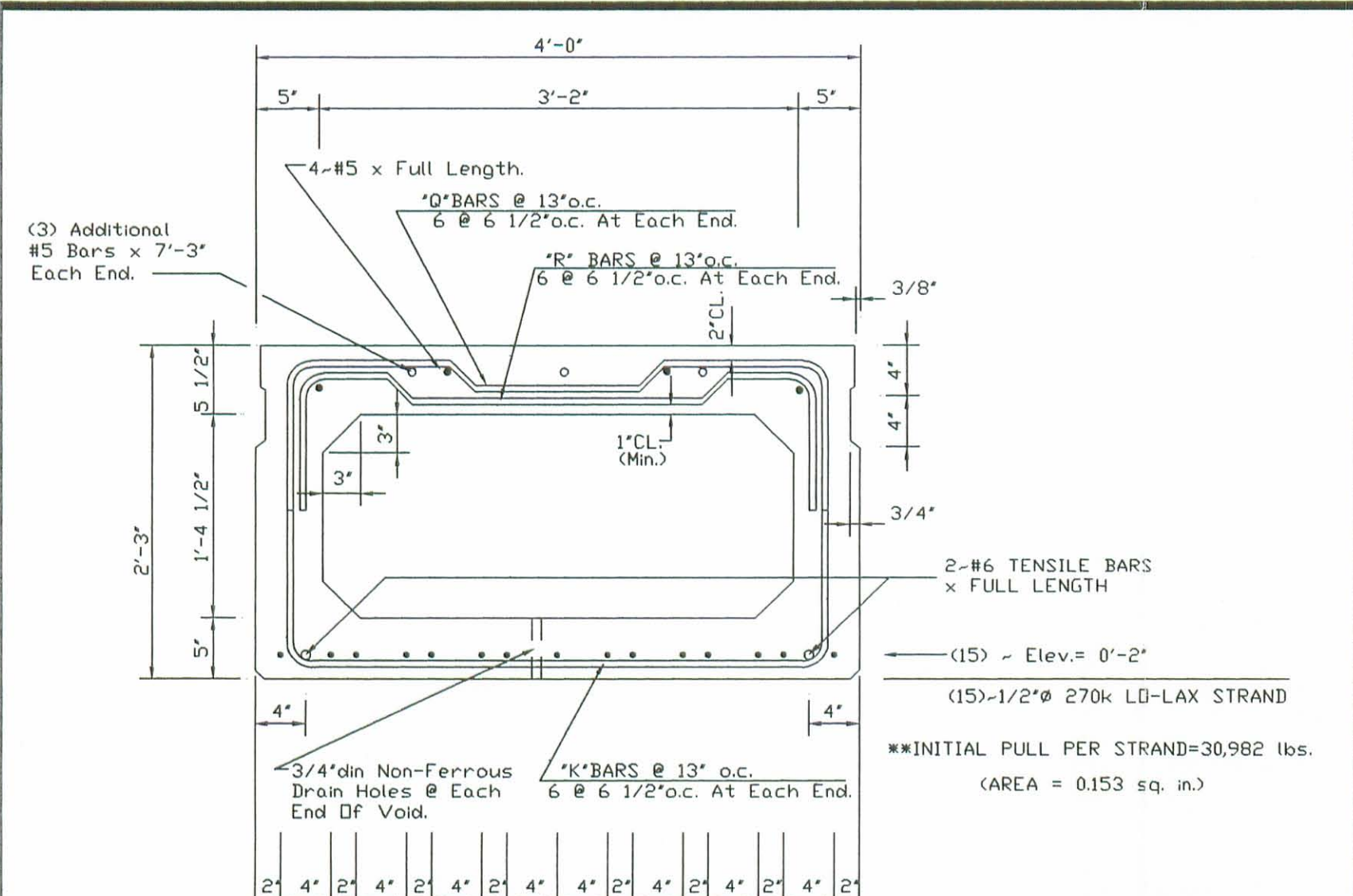
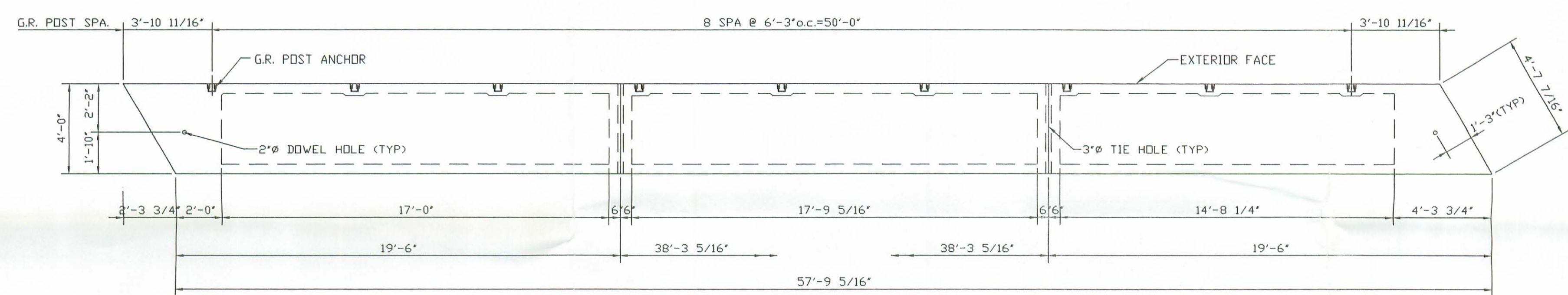


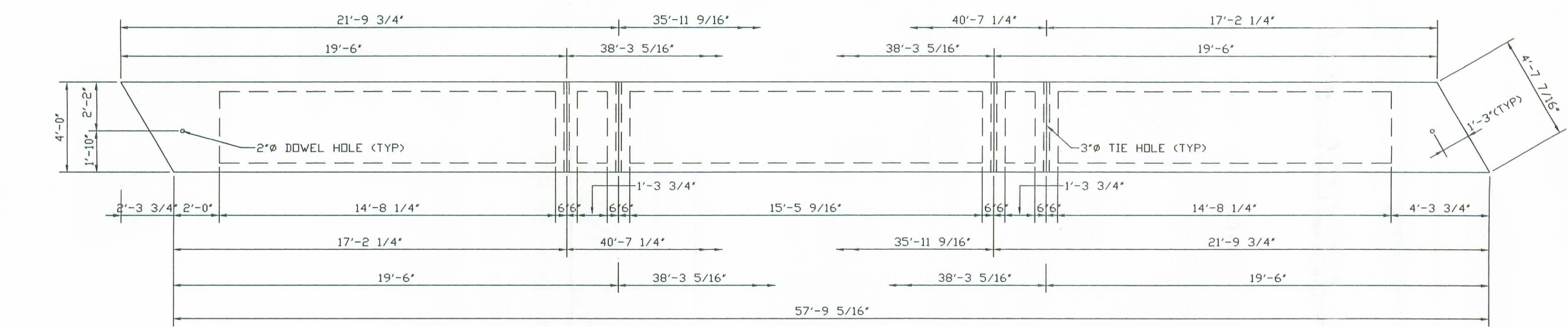
REVISIONS			Proj. LOGAN COUNTY JOB	
NO.	Description	Date	By	Br. No. LOG-44-3.73
				County, State: LOGAN COUNTY, OHIO
				Location: C.R. 44
				Contractor: LOGAN COUNTY FORCES
				Date: 4-17-96
				Drawn By: E.J.S.
				Checked By: <i>EJS</i>
				P.C.# 9427
				PRESTRESS SERVICES INC. P.O. Box 111 R.R.#8 Winchester Rd. Decatur, Indiana 46733
				Job No. 4606
				Drawing No. 1 OF 2



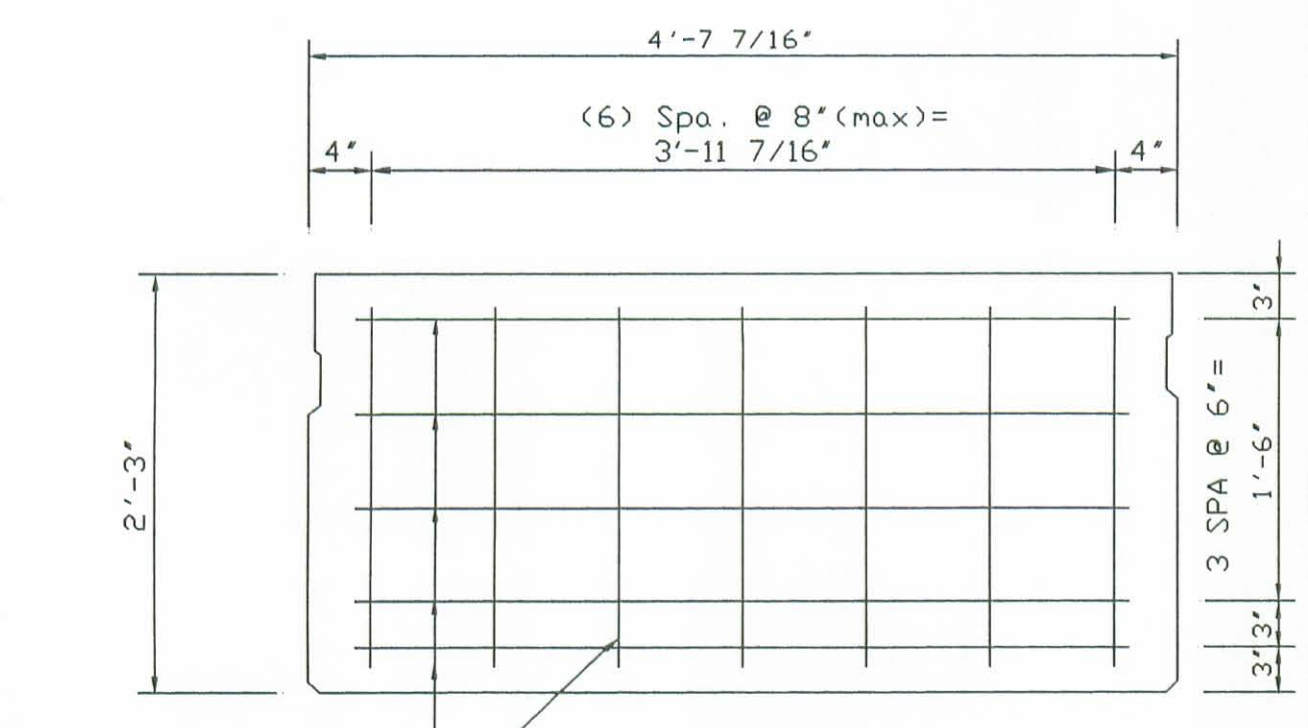
Typ. Cross Section.



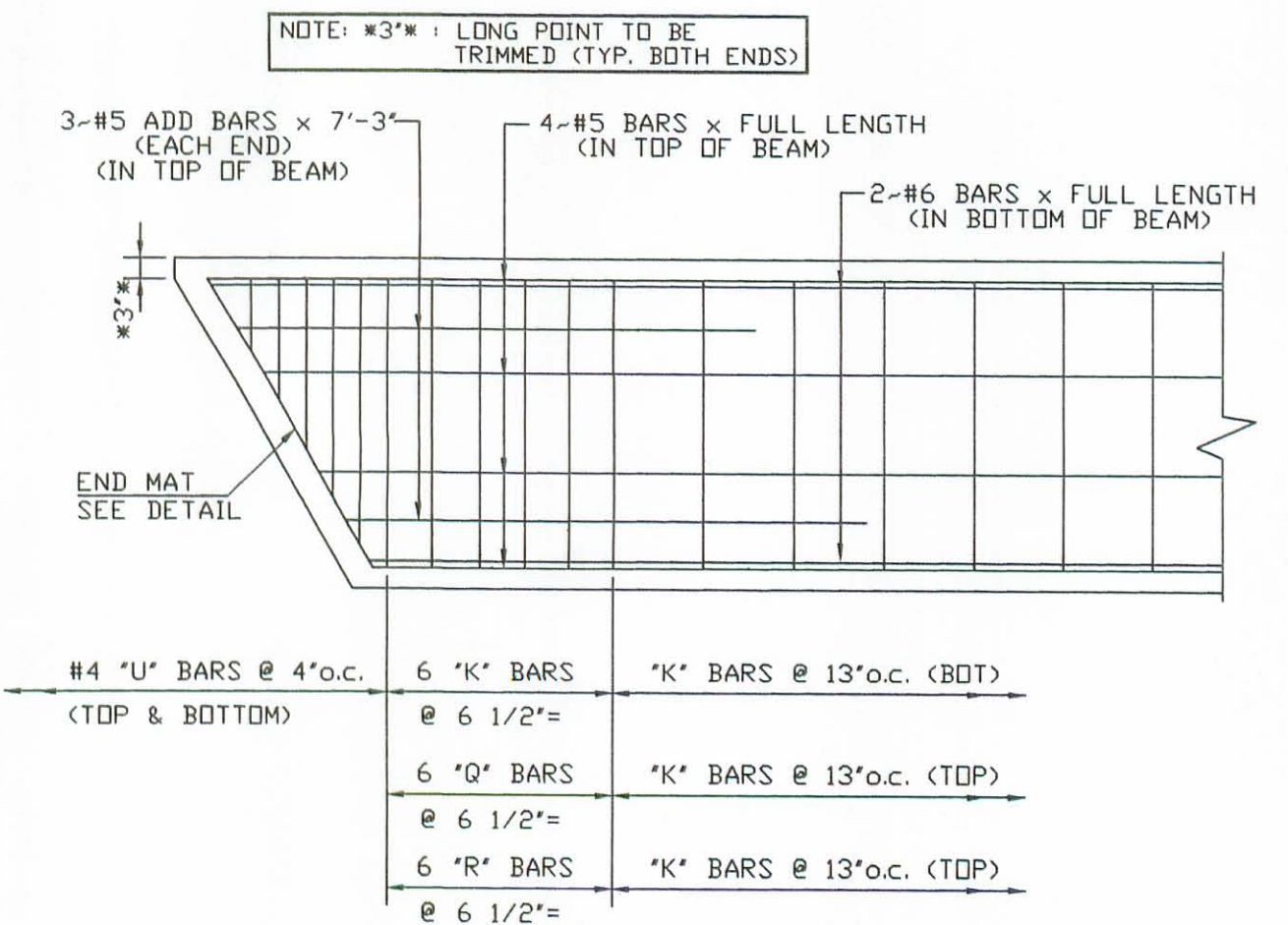
BEAM PLAN NO. 1 & 7
(CASTING WEIGHT=46,685 lbs.) (SHIPPING WEIGHT=47,825 lbs.)



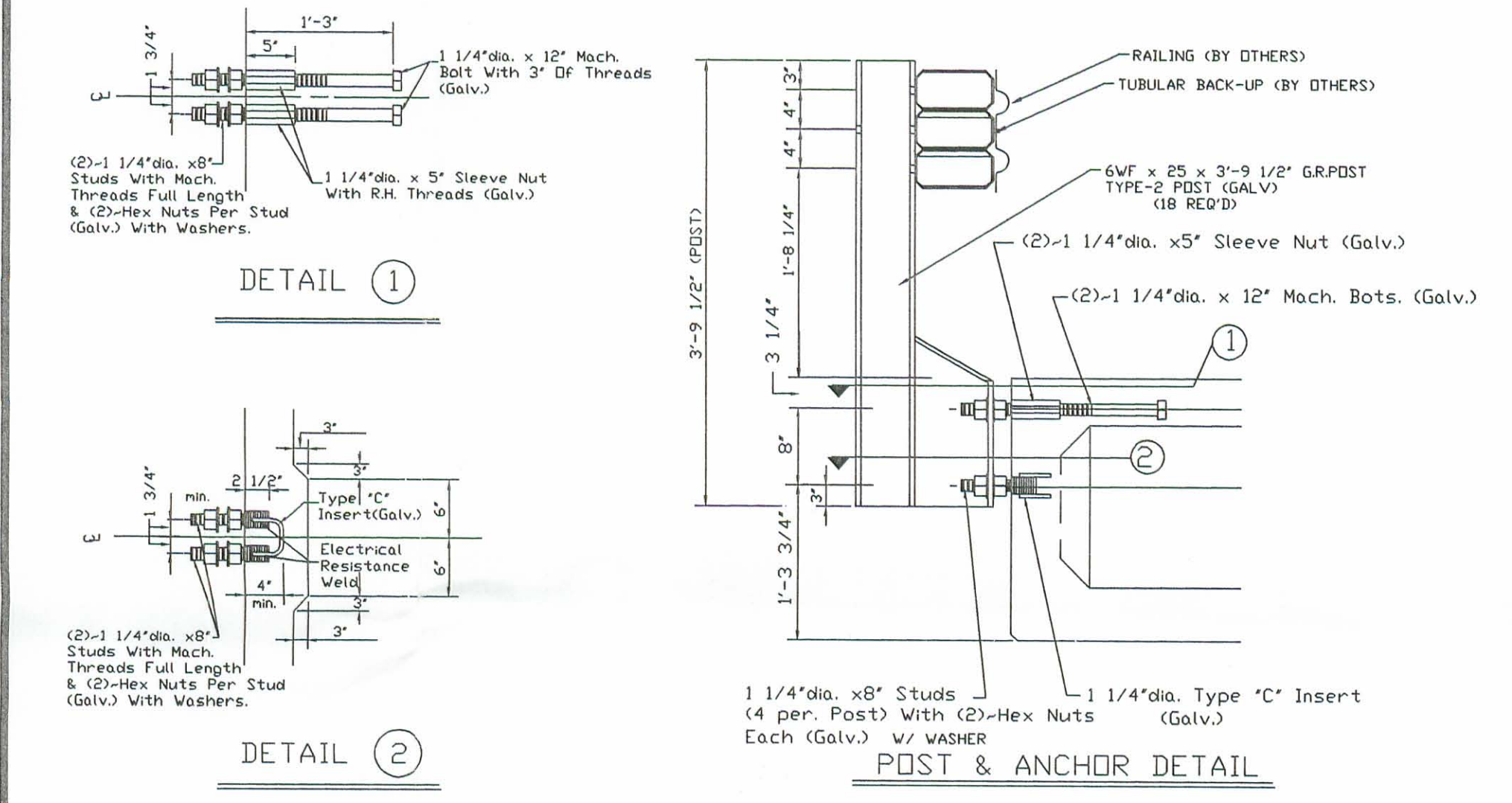
BEAM PLAN NO. 2 THRU 6
(CASTING WEIGHT=47,435 lbs.) (SHIPPING WEIGHT=47,435 lbs.)



End Mat Detail



BEAM END REINFORCING DETAIL



POST & ANCHOR DETAIL

- NOTES:
1. CONCRETE STRENGTH AT TIME OF PRESTRESSING IS 4000 P.S.I. AND AT 28 DAYS IS 5500 P.S.I.
 2. DETENSION STRAND SYMMETRICALLY ABOUT CENTER LINE
 3. LOADING= HS-20-44 & ALTERNATE MILITARY.
 4. BEAM WEIGHT= SEE BEAM PLANS
 5. TOP SURFACE OF BEAMS GIVEN A LIGHT BROOM FINISH.
 6. ANTICIPATED CAMBER AS SHOWN ON PROJECT PLANS IS: 1"
 7. WATERPROOF BEAM ENDS
 8. OMIT KEYWAY ON EXTERIOR FACE OF EXTERIOR BEAMS.
 9. SANDBLAST ALL KEYWAYS
 10. IPANEX IS TO BE ADDED TO THE CONCRETE

CHANGE NOTES: CHANGES ARE NOTED AS DIFFERENT FROM O.D.D.T. STD. DWG. P.S.B.D.-1-93 AND ARE VARIED PER. NOTE ON P.S.B.D.-1-93 SHT. 2 OF 4.

1. 3/4" Keyway To 4/4" Keyway.
2. Tie Rod Hand Hole From 9" To 10".

REVISIONS			Project: LOGAN COUNTY JOB	
NO.	Description	Date By	Br. No:	LOG-44-3.73
			County, State:	LOGAN COUNTY, OHIO
			Location:	C.R. 44
			Contractor: LOGAN COUNTY FORCES	
			Date:	4-17-96
			Drawn By:	E.J.S.
			Checked By:	[Signature]
			P.C.#	9427