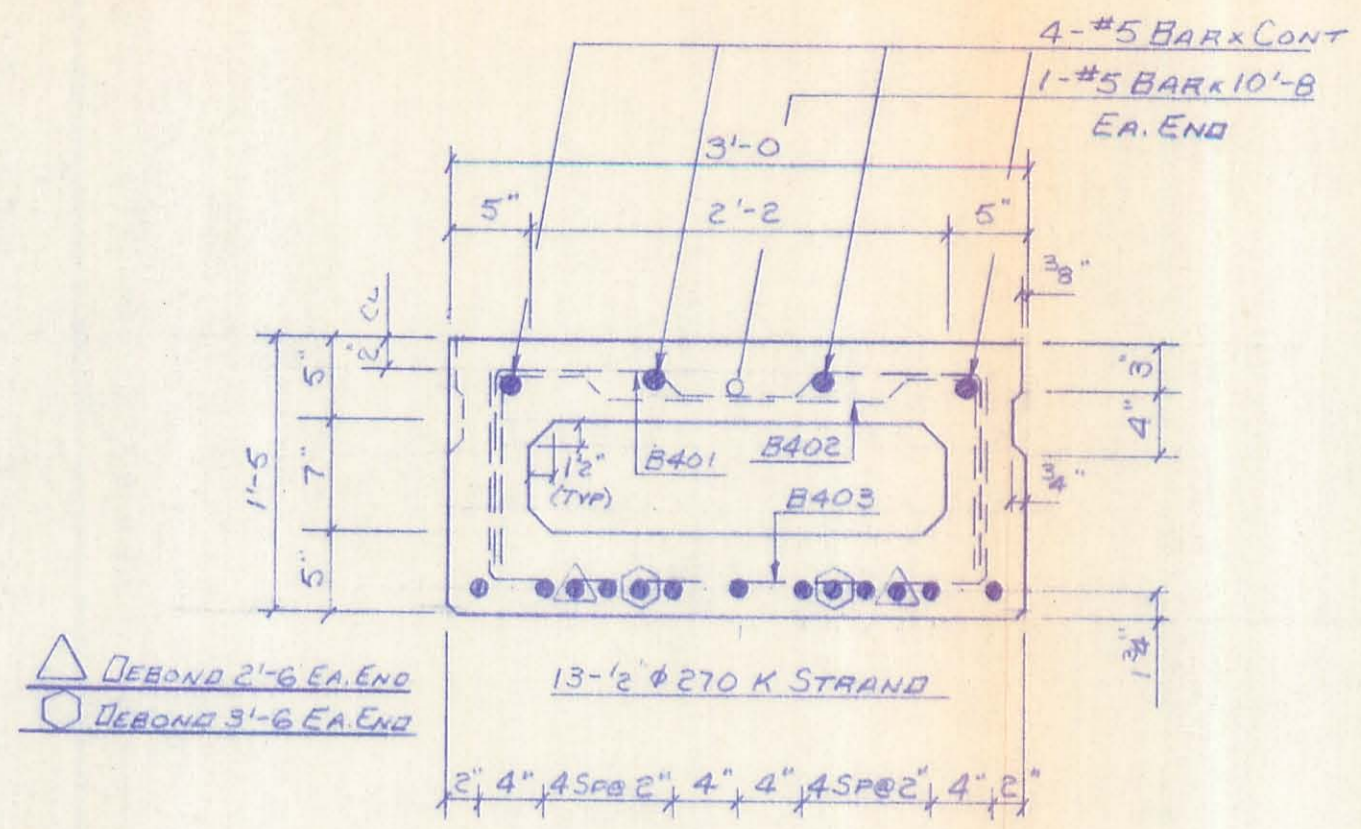
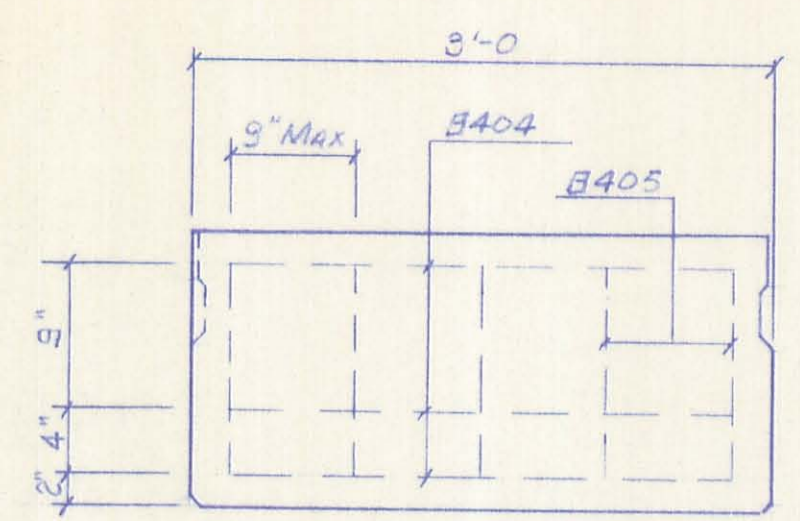


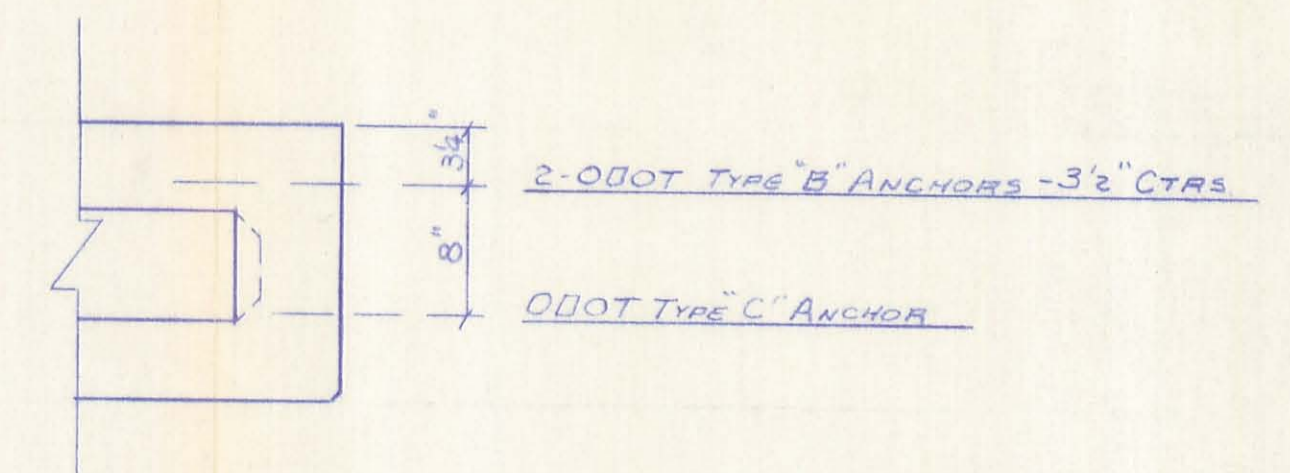
ERECTION PLAN



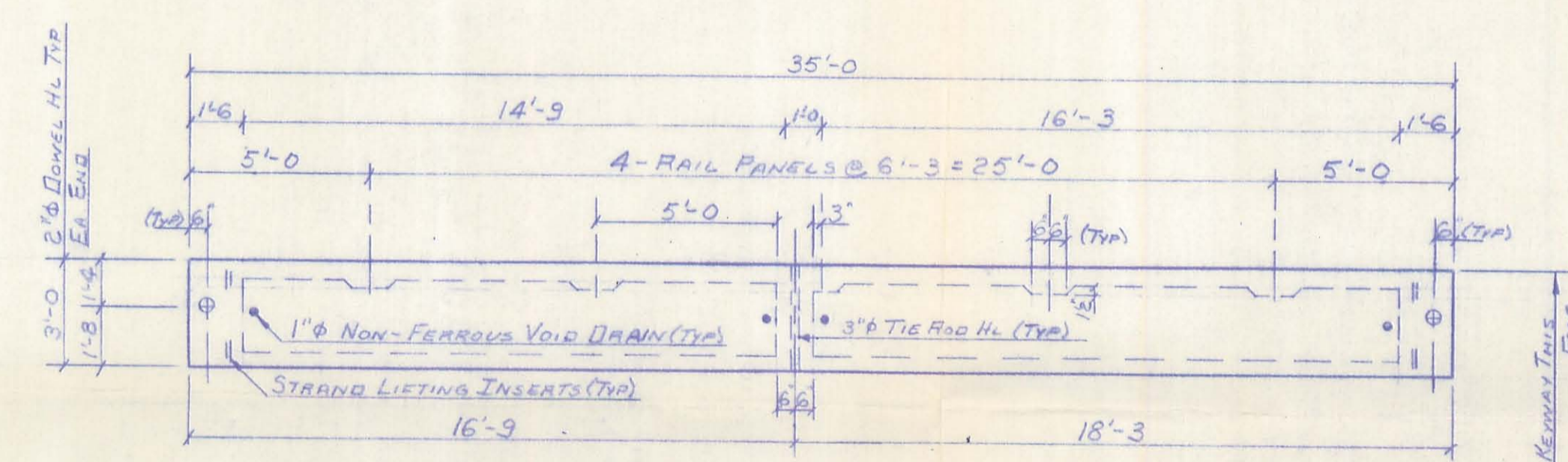
TYPICAL BEAM SECTION



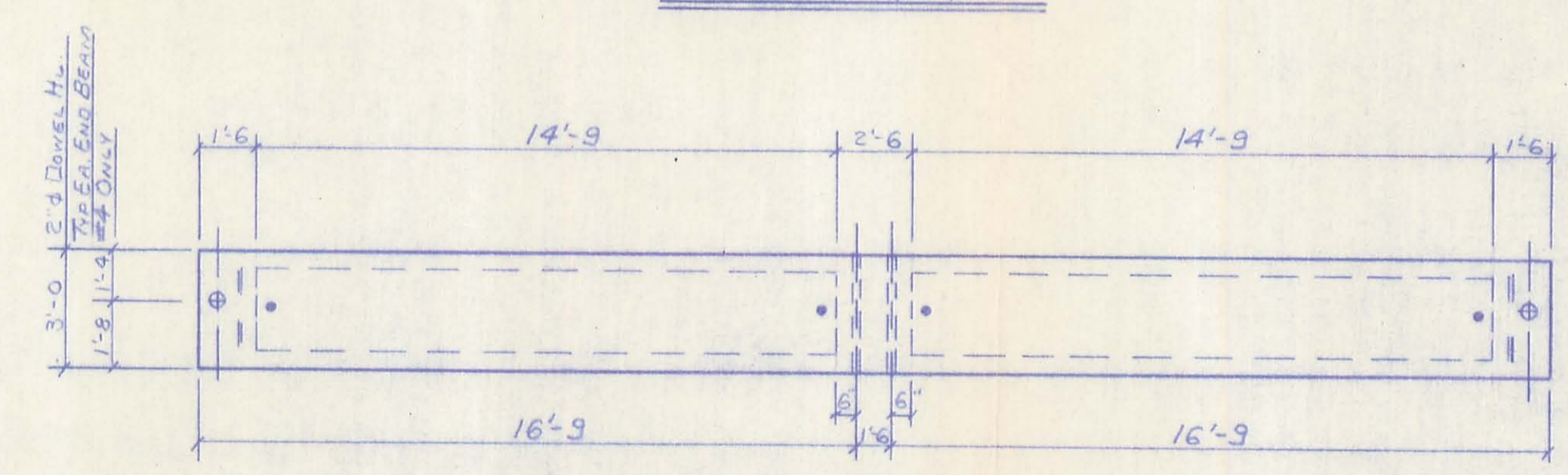
BEAM END CAGE



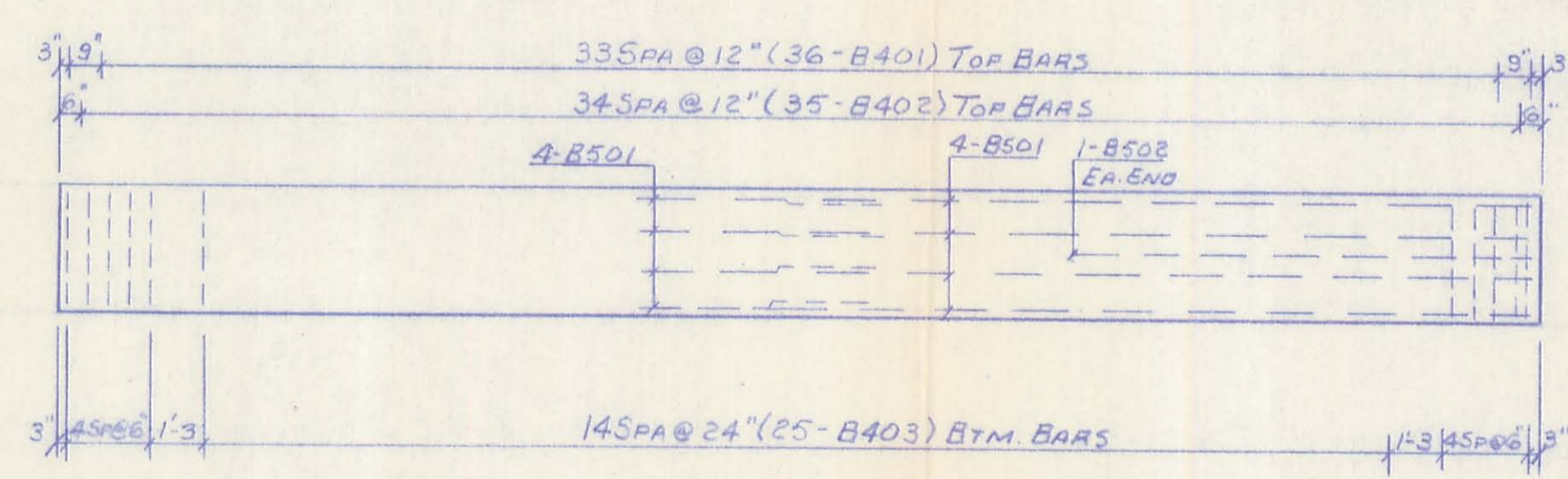
FASCIA BEAM DETAIL



2- BEAMS #1 & #7



ONE BEAM #4 SHOWN
4- BEAMS #2, 3, 5, #6 (SHOWN & NOTED)



REINFORCING PLAN ALL 7 BEAMS

SPECIFICATIONS

MINIMUM CONCRETE STRENGTH AT 28 DAYS - 5500 P.S.I.
 DO RELEASE - 4000 P.S.I.
 PRESTRESSING STRAND: 1/2" DIA. - 270K, 7 WIRE UNCOATED
 STRESS RELIEVED, INITIAL TENSION - 189,000 P.S.I.
 TIE ROD AND POST ANCHOR ASSEMBLIES TO BE GALVANIZED
 PER ODOT SPECIFICATIONS SECTION 711.02
 SURFACE FINISH: ROUGH GRAIN WOOD FLOAT
 REINFORCING BARS: 40,000 P.S.I. YIELD
 BEAM WT: 8.75 TON
 HS 20-44 LOADING

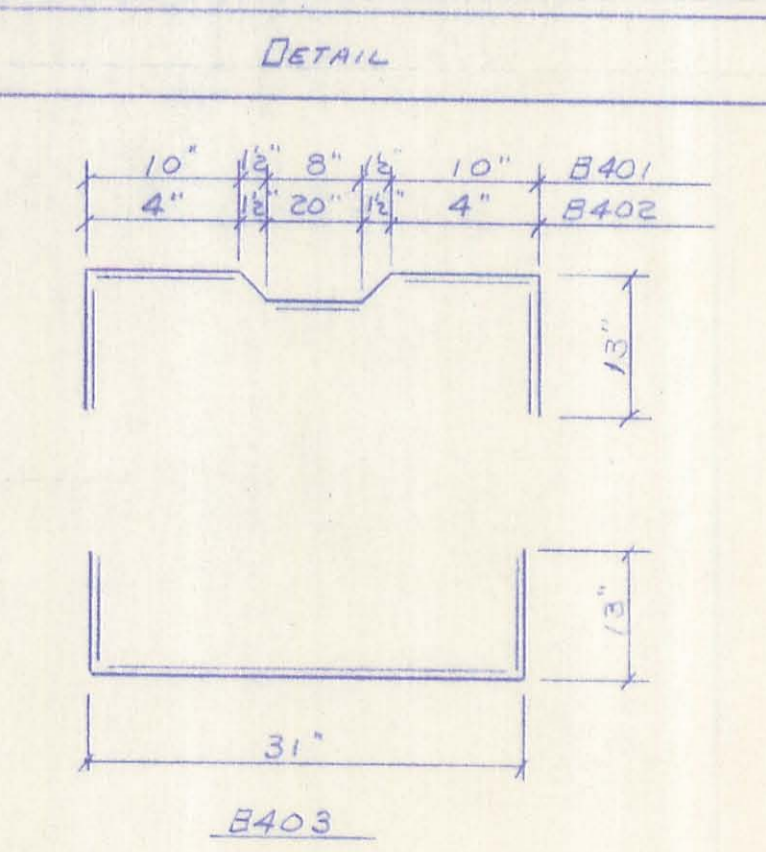
ODOT STANDARD DRAWING REFERENCE

- PSBD - 1 - 81 (1/4) PRESTRESSED CONCRETE BOX BEAM DETAILS
 - A) BEAM LIFTING INSERTS
 - B) VOID ALLEGATION AT GUARD RAIL ANCHORS
- PSBD - 1 - 81 (2/4) DO
 - A) END DETAIL OF TRANSVERSE TIE ROD ANCHORAGE
- DBR - 2 - 73 DEEP BEAM BRIDGE GUARD RAIL
 - A) TYPE "B" ANCHOR DETAIL
 - B) TYPE "C" ANCHOR DETAIL

ADDITIONAL MATERIAL FURNISHED BY UNIVERSAL CONCRETE PRODUCTS INC.

- NON-SHRINK GROUT ADDITIVE FOR SHEAR KEYWAY (NO GROUT)
- JUTE FOR KEYWAYS AS REQUIRED
- EA. DOWEL PIN - #6 BARx2'-5
- EA. DOWEL PIN SEALS - (1" THICK)
- EPOXY SPRAY SEALER - FASCIA BEAMS
- 28" ELASTOMERIC BEARING PADS (1/2"x12")
- 2- PIECES EXPANSION JOINT MAT'L (1"x3"x21'-3)

MARK	QUANT	LETH.	TYPE
B401	252	4'-8	B
B402	245	4'-8	B
B403	175	4'-8	B
B404	42	2'-7	S
B405	70	1'-1	S
B501	56	18'-2	S
B502	14	10'-8	S



BRUNING 40-105 59427

ISSUE NO.	DATE	REVISION	BY	CH. BY

PRESTRESS BEAM DETAILS
 BRIDGE No. 44-0121 ON COUNTY ROAD 44
 LOGAN COUNTY, BELLEFONTAINE, OHIO
 LOGAN COUNTY ENGINEER
 BRIDGE DIVISION

UNIVERSAL CONCRETE PRODUCTS INC.
 COLUMBUS, OHIO
 SHEET NO. 111

DRAWN	DATE	CHECKED	DATE	APPROVED	DATE
D.S.F.	AUGUST 84				