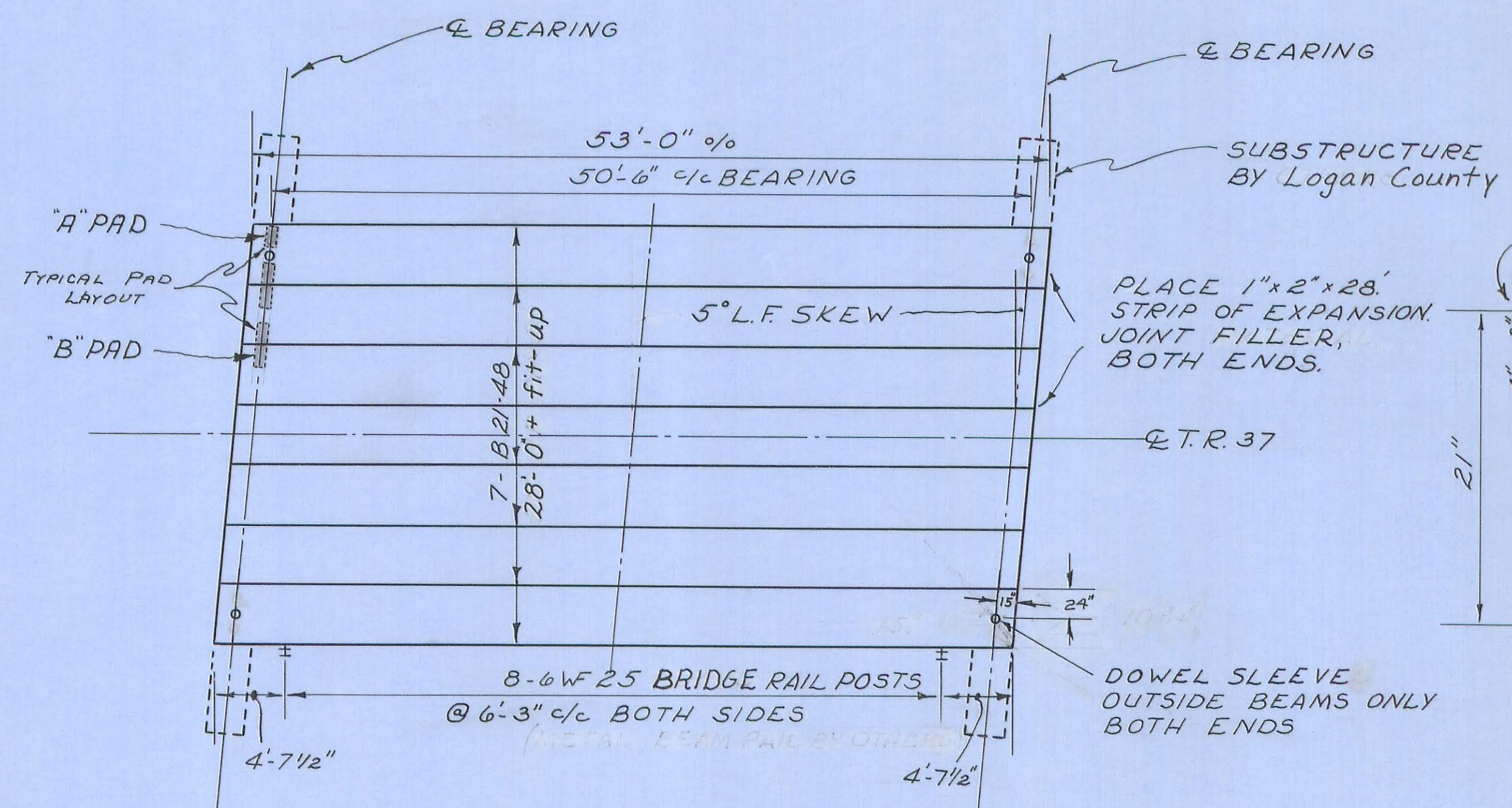
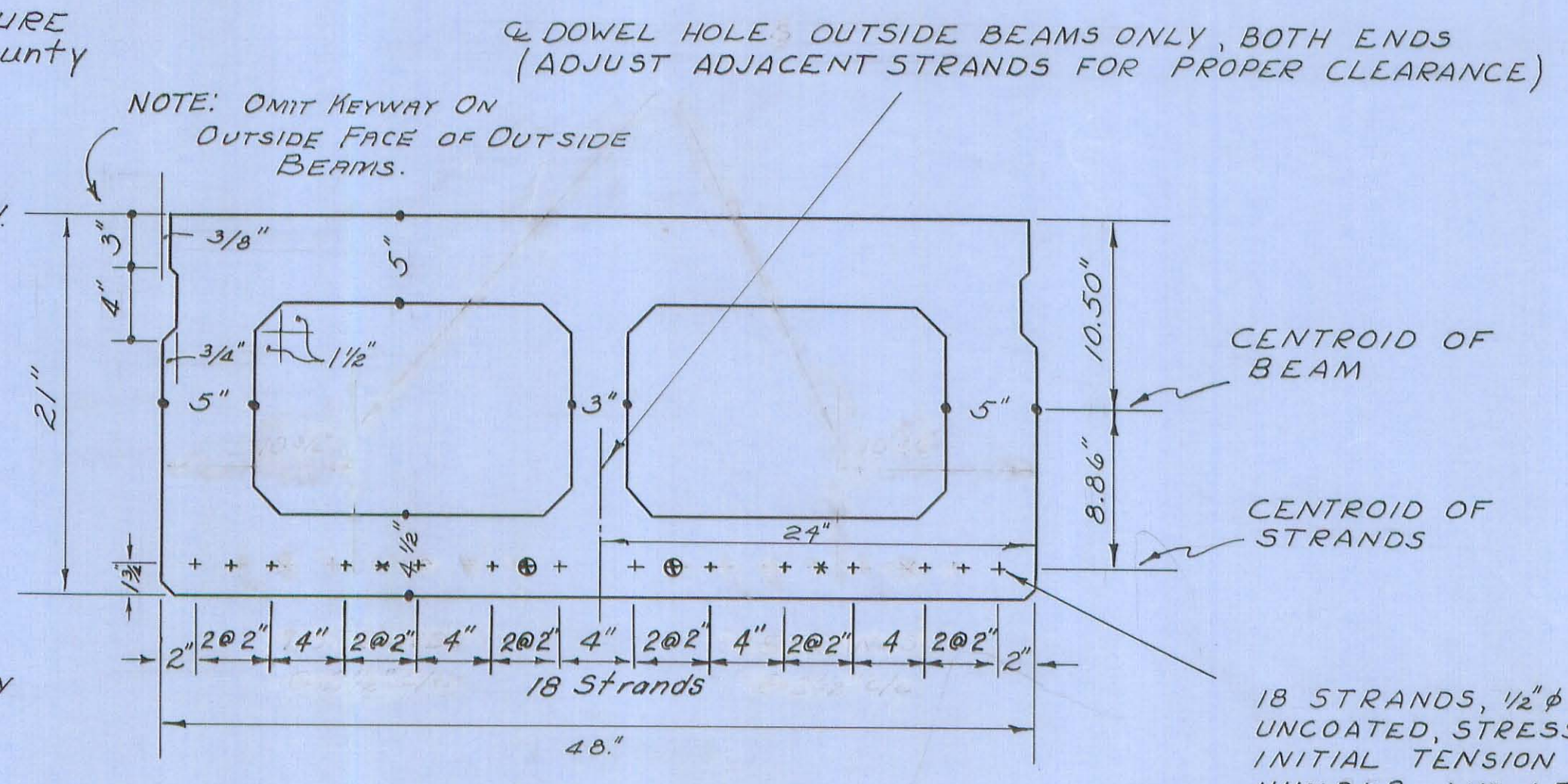


NOTE: 8 shims, 1/8" thick, as per 711.21, shall be provided. They shall be the same plan dimension as the bearing pads, and included with the bearing pads for payment.



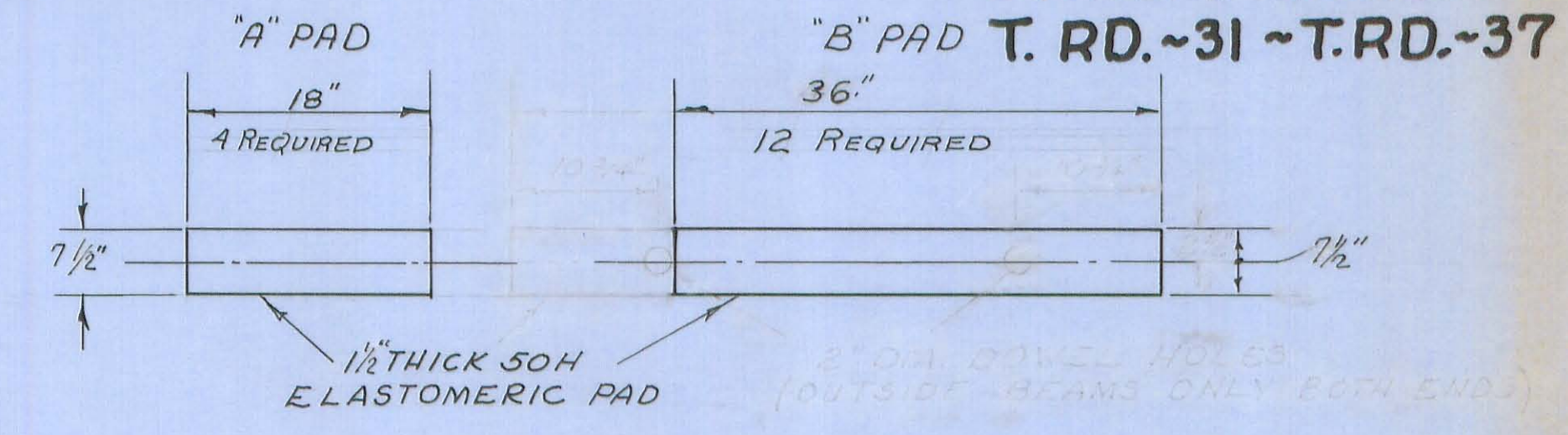
SCHMATIC PLAN
 BR. 37-5.01
 Scale 1/8" = 1'-0"

REINFORCING: The clearance to the stirrups, in the top of the box, shown as 1" on PSBD-1-71, shall be 2". This may require the bending diagrams for the stirrups to be revised from what is shown on the standard.



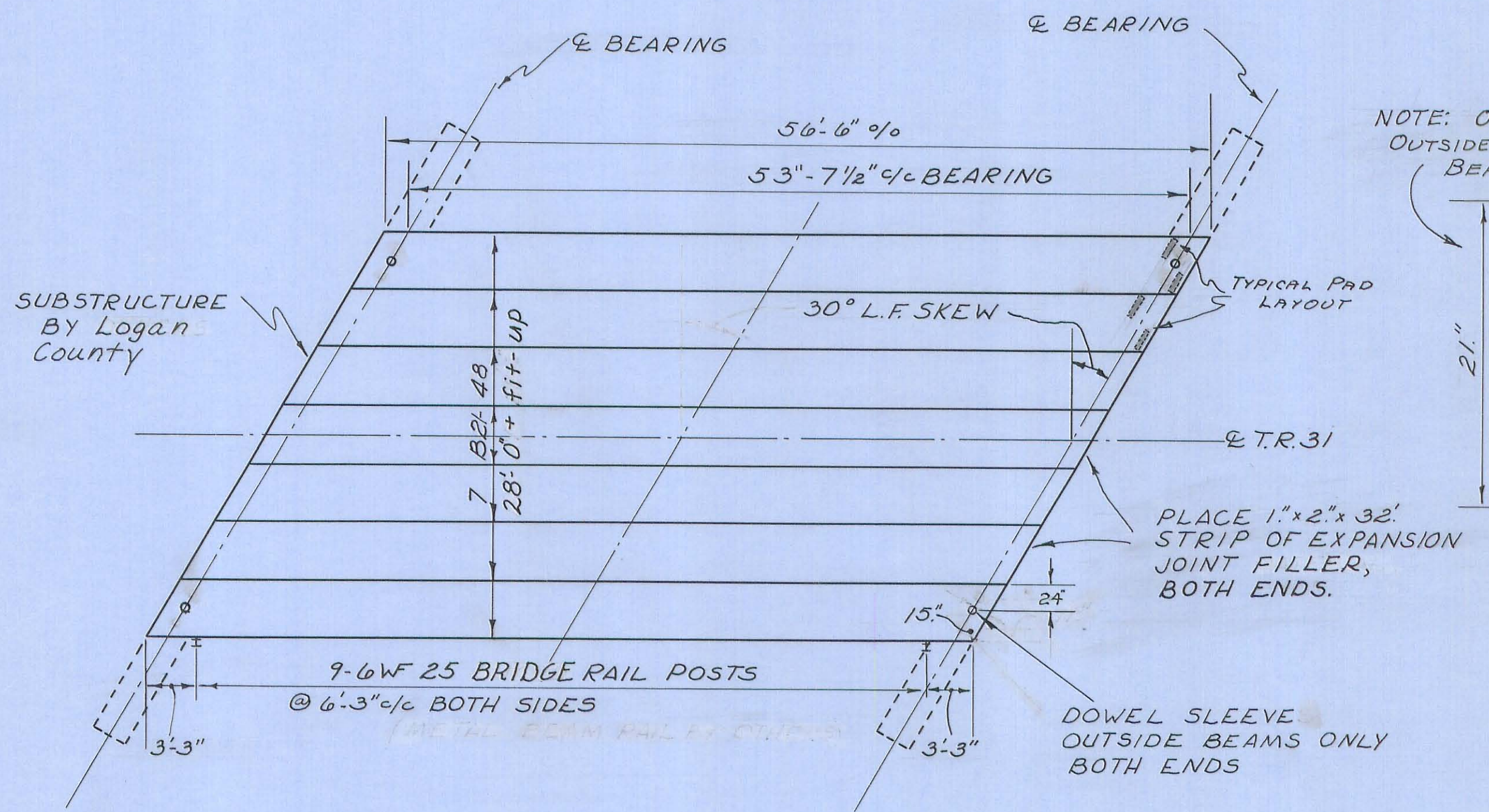
TYPICAL B21-48 53'-0" o/c
 STRAND LOCATION
 BR. 37-5.01
 Scale 1 1/2" = 1'-0"

18 STRANDS, 1/2" φ, 270K SEVEN WIRE, UNCOATED, STRESS RELIEVED STRAND. INITIAL TENSION = 28,900 #/STRAND. NUMBER AND LENGTH DEBONDED
 * 2 @ 1'-6"
 @ 2 @ 2'-6"
 (LENGTH MEASURED FROM BEAM END)
 ADDITIONAL TOP BARS EACH END
 @ - NO. 4 - 8'-9" LONG
 INITIAL CAMBER = .77"



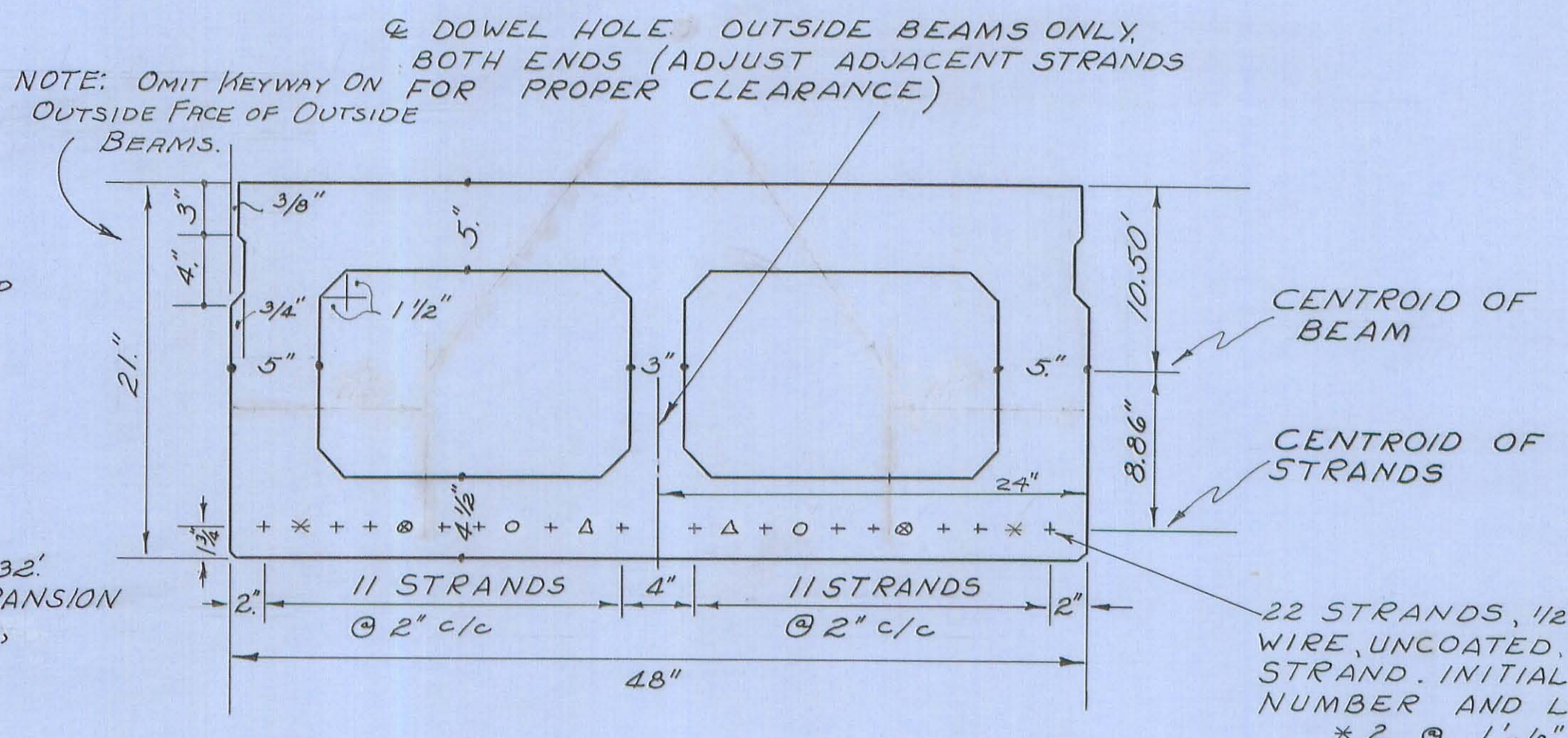
BEARING PAD DETAILS
 Scale 1" = 1'-0"

NOTE: BEAMS SHALL HAVE 2-THREE FOOT DIAPHRAGMS LOCATED AT APPROXIMATE THIRD POINTS SO THAT TIE RODS DO NOT INTERFERE WITH BRIDGE RAIL POSTS. DIAPHRAGMS SHALL BE DESIGNED ACCORDING TO PSBD-1-71 PAGE 2 FOR 48" BEAMS @ BETWEEN 4" AND 14".



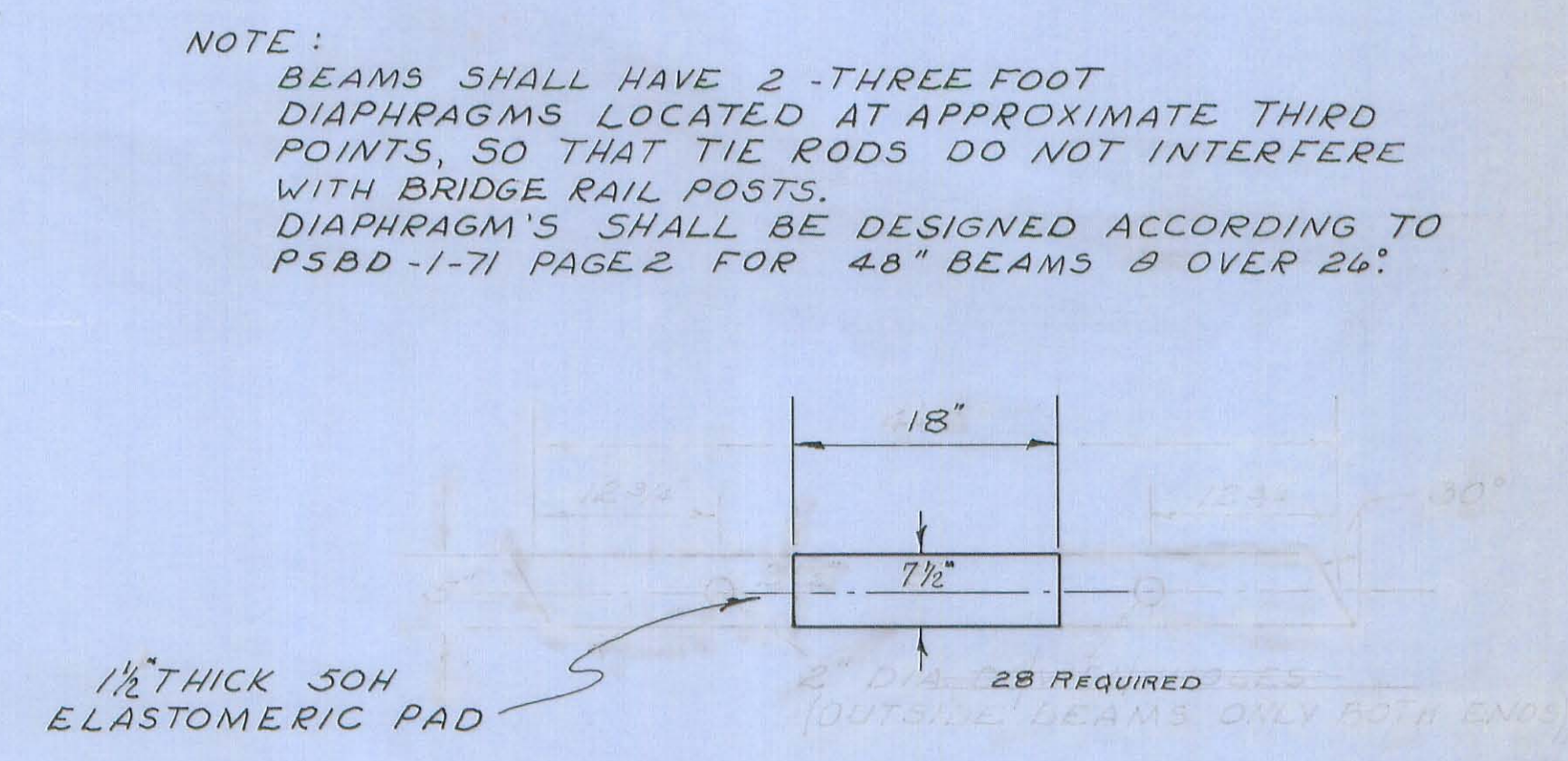
SCHMATIC PLAN
 BR. 31-7.17
 Scale 1/8" = 1'-0"

REINFORCING: The clearance to the stirrups, in the top of the box, shown as 1" on PSBD-1-71, shall be 2". This may require the bending diagrams for the stirrups to be revised from what is shown on the standard.



TYPICAL B21-48 56'-6" o/c
 STRAND LOCATION
 BR. 31-7.17
 Scale 1 1/2" = 1'-0"

22 STRANDS, 1/2" φ, 270K SEVEN WIRE, UNCOATED, STRESS RELIEVED STRAND. INITIAL TENSION = 28,900 #/STRAND. NUMBER AND LENGTH DEBONDED
 * 2 @ 1'-6"
 @ 2 @ 2'-6"
 @ 2 @ 4'-0"
 @ 2 @ 5'-6"
 (LENGTH MEASURED FROM BEAM END)
 ADDITIONAL TOP BARS EACH END
 @ - NO. 4 - 10'-0" LONG
 INITIAL CAMBER = 1.11"



BEARING PAD TYPICAL
 Scale 1" = 1'-0"

NOTE: BEAMS SHALL HAVE 2-THREE FOOT DIAPHRAGMS LOCATED AT APPROXIMATE THIRD POINTS, SO THAT TIE RODS DO NOT INTERFERE WITH BRIDGE RAIL POSTS. DIAPHRAGMS SHALL BE DESIGNED ACCORDING TO PSBD-1-71 PAGE 2 FOR 48" BEAMS @ OVER 26".

LOGAN COUNTY ENGINEER
 CHESTER R. KURTZ

PRESTRESSED BEAM DETAILS
 LOGAN COUNTY, OHIO
 BRGS. 31-7.17 & 37-5.01
 HARRISON & McARTHUR TOWNSHIPS

Design	Drawn	Checked	Approved
M.W.B.	C.N.	D.L.D.	