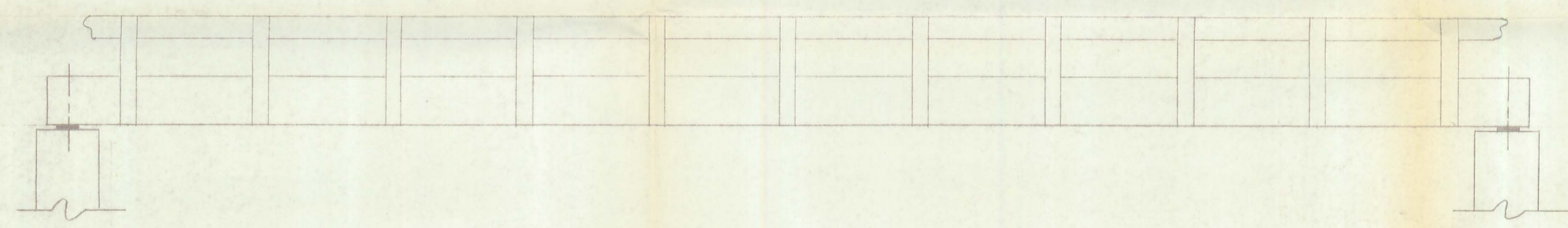
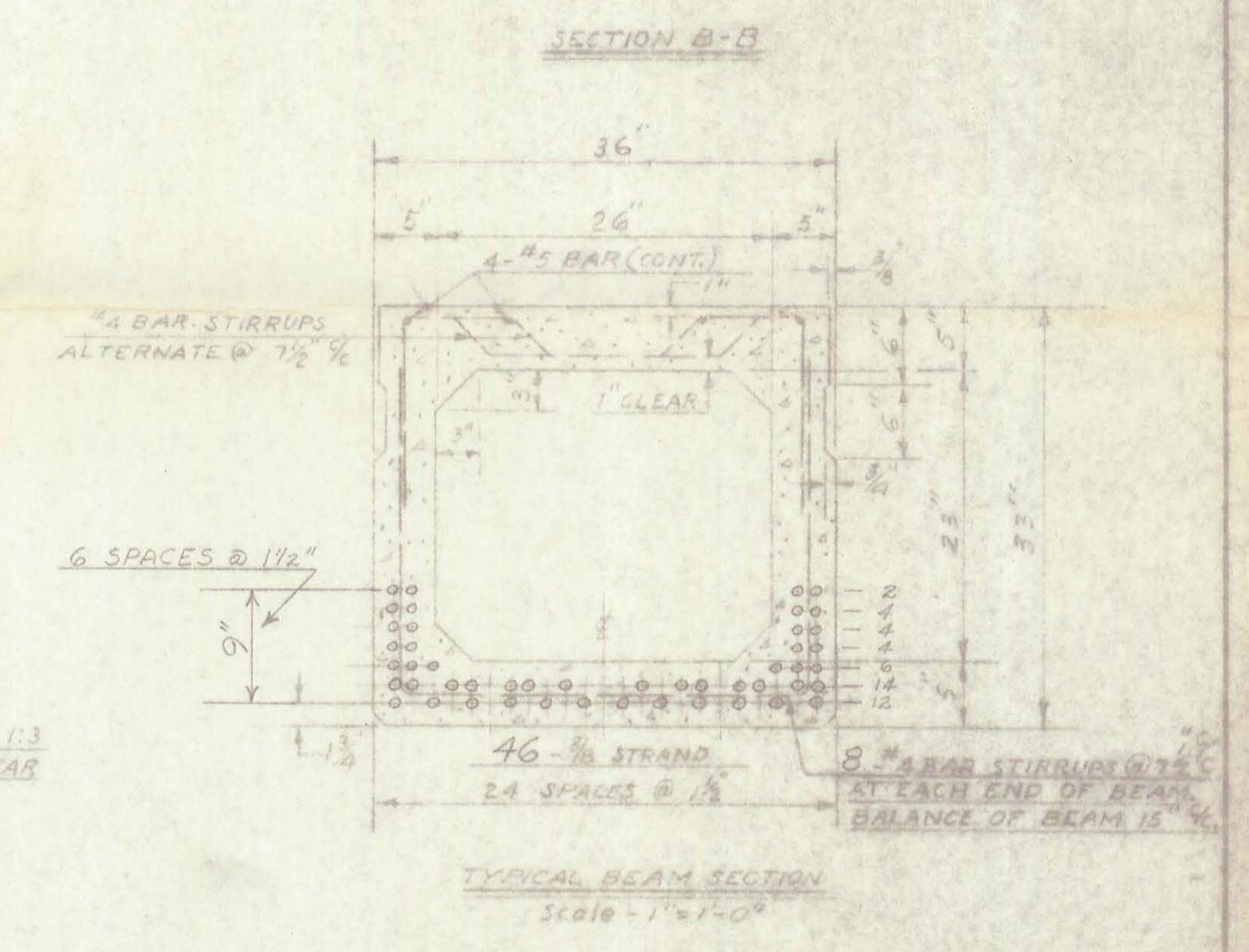
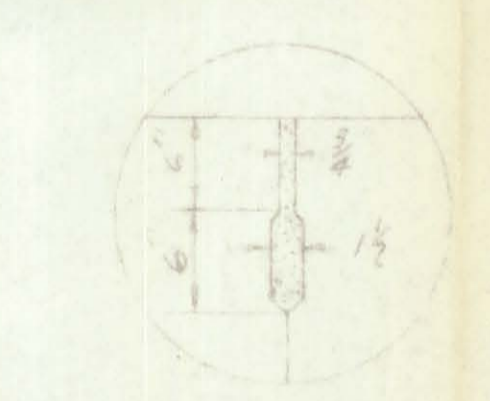
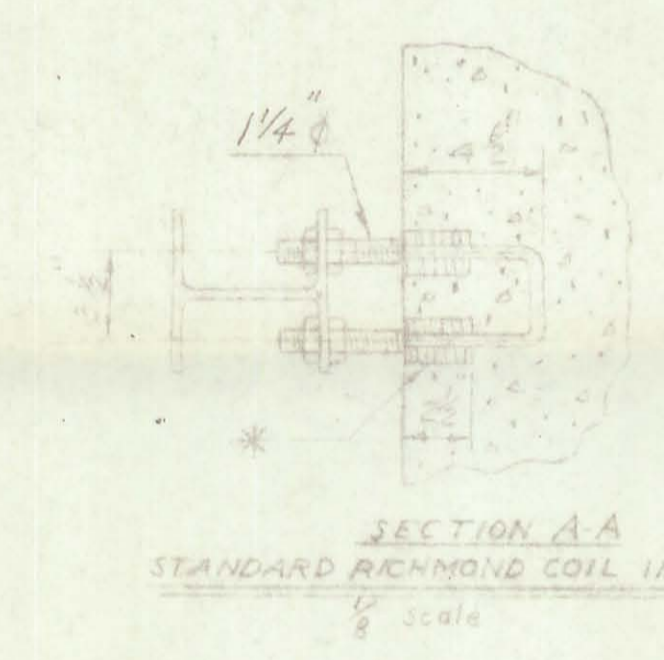
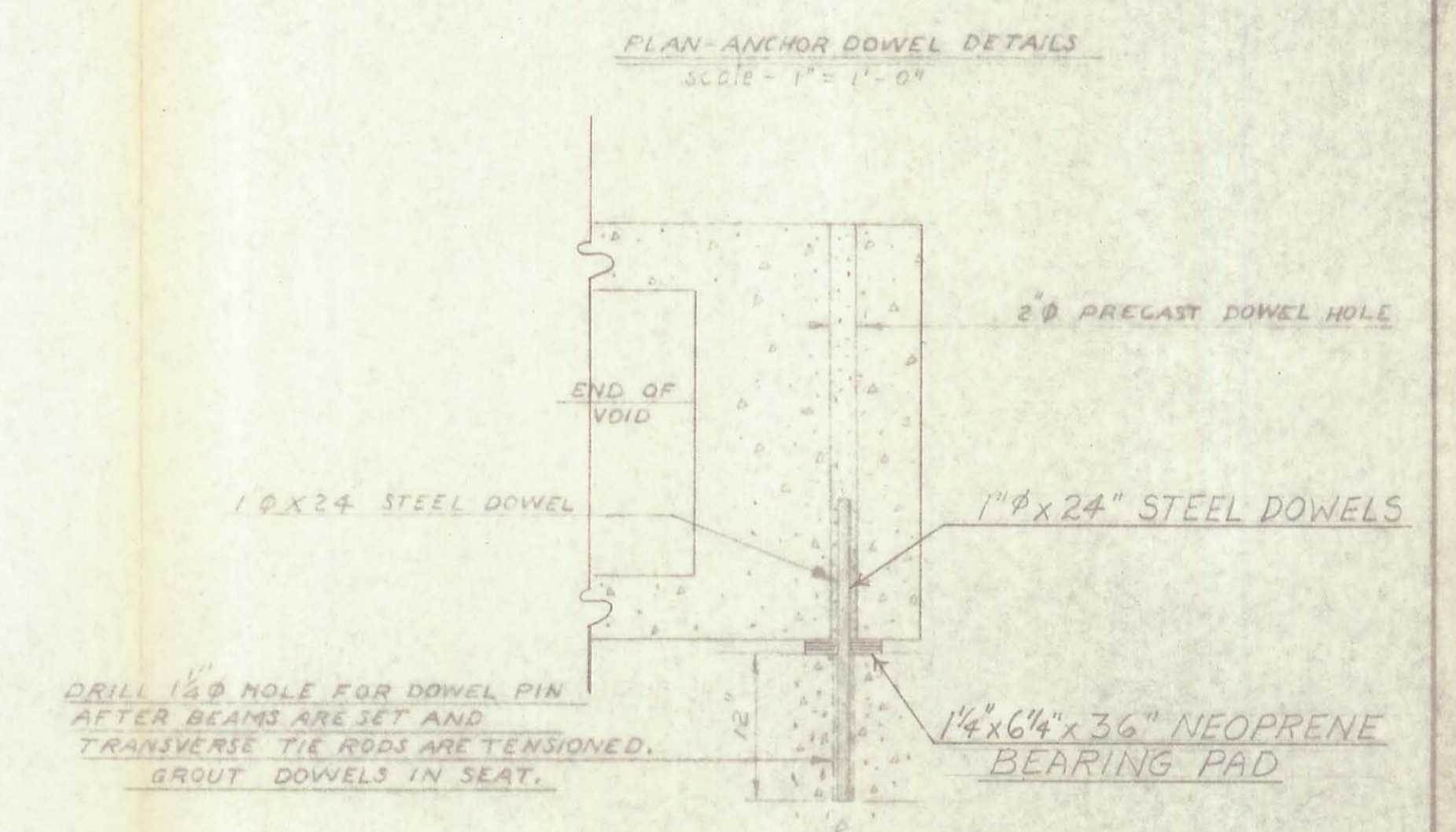


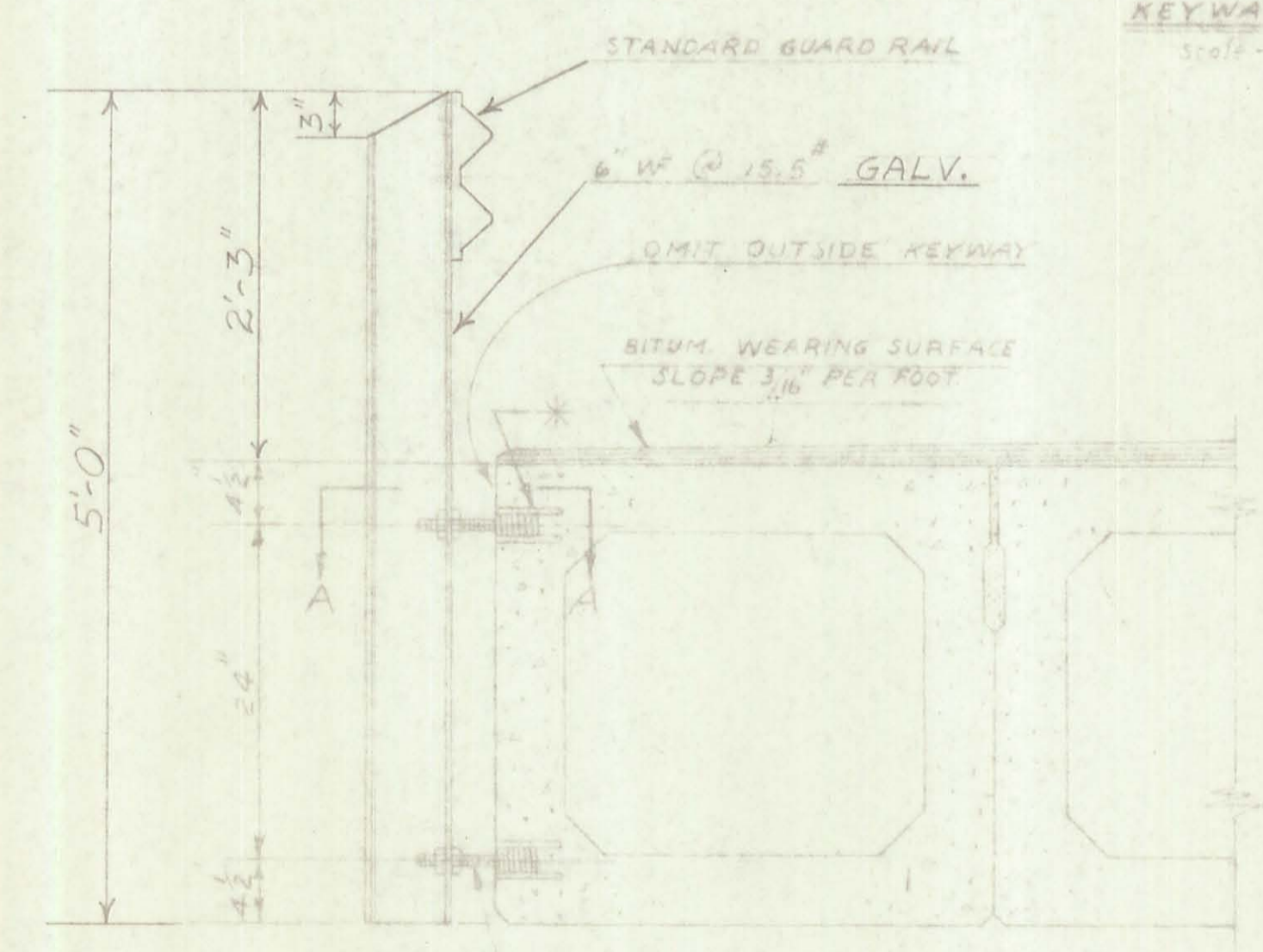
FRAMING PLAN



ELEVATION



LOADING 5-20-60



1/4" x 6" x 36" GALV FULL THREAD STUD.  
PROVIDE TWO GALV HEX NUTS PER STUD.  
HOLES IN POSTS SHALL BE 1/2" ±.

BEAMS PLACED JAN. 13, 1969  
TEMP = 7°  
D.L.D.

BRIDGE NO. 33-5.61 TWP. RD 33  
LOGAN COUNTY, OHIO

CHESTER R. KURTZ, P.E.  
LOGAN COUNTY ENGINEER

REVISIONS

NO.	DATE	BY	REVISION
1			
2			
3			
4			
5			
6			
7			
8			
9			
10			

RELIANCE UNIVERSAL INC.  
COLUMBUS, OHIO

SCALE: NOTED

DATE: 10-24-69

APPROVED: