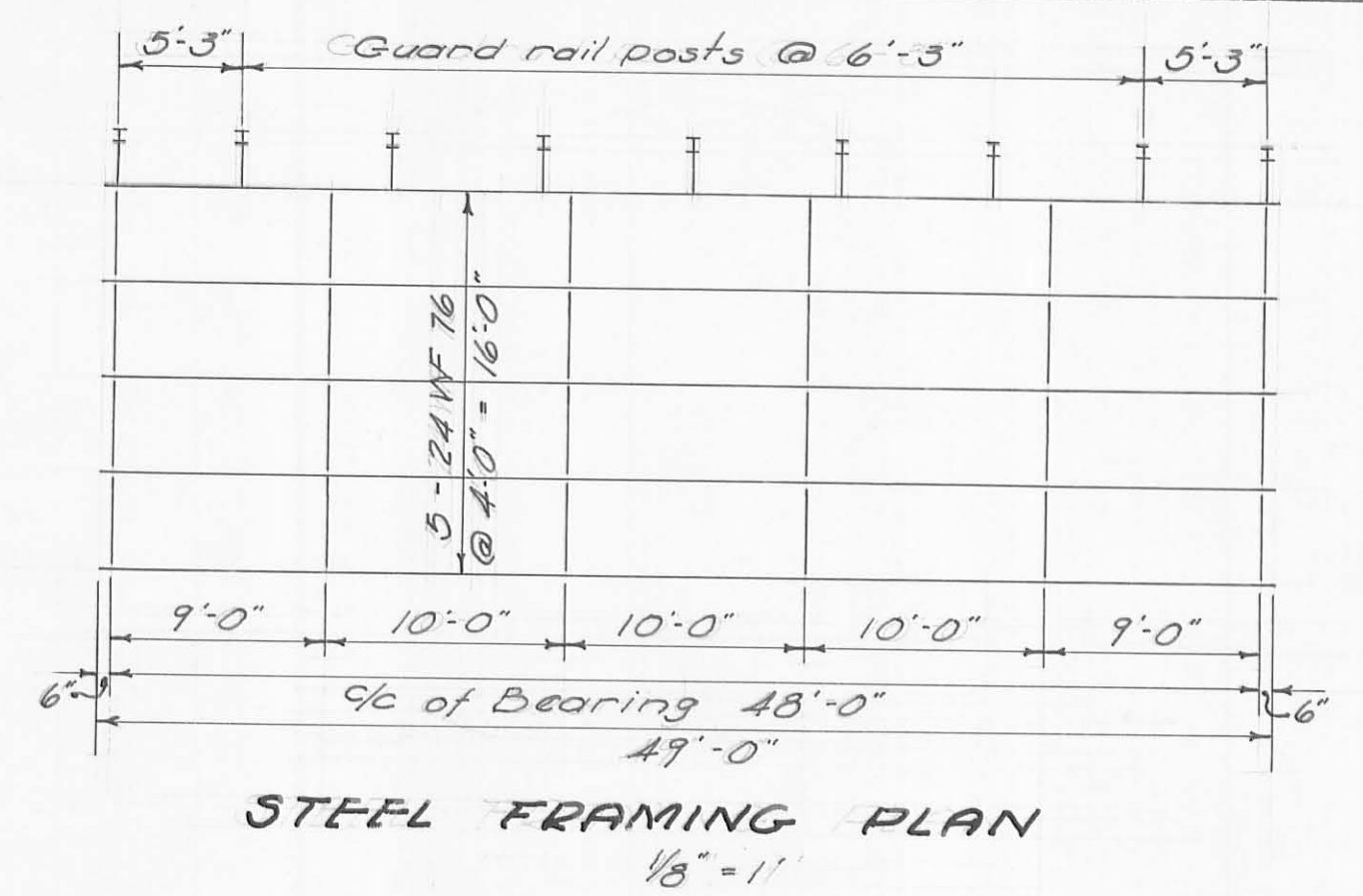


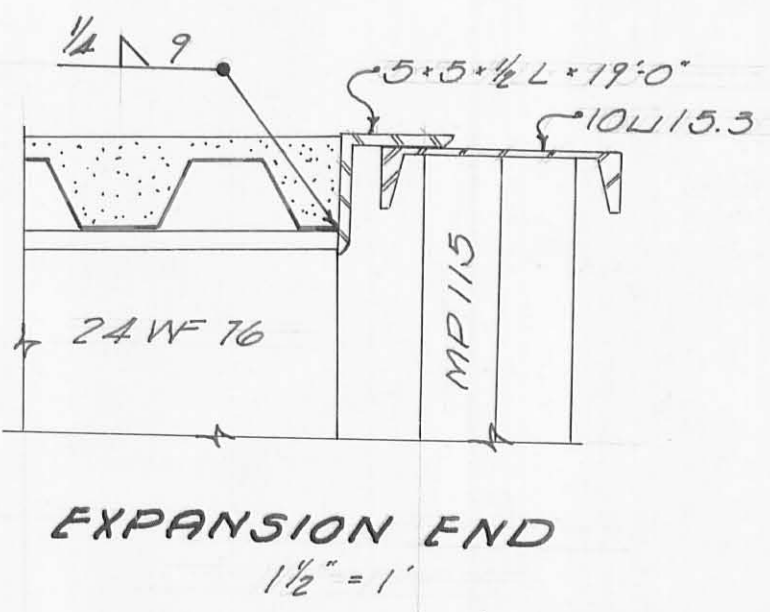
SHEET PILING REQ'D - ONE WALL
 BACKWALL - 14-MP115
 2-Corner Pile
 ONE WING - 6-MP115
 TOTAL - 28 Pcs.



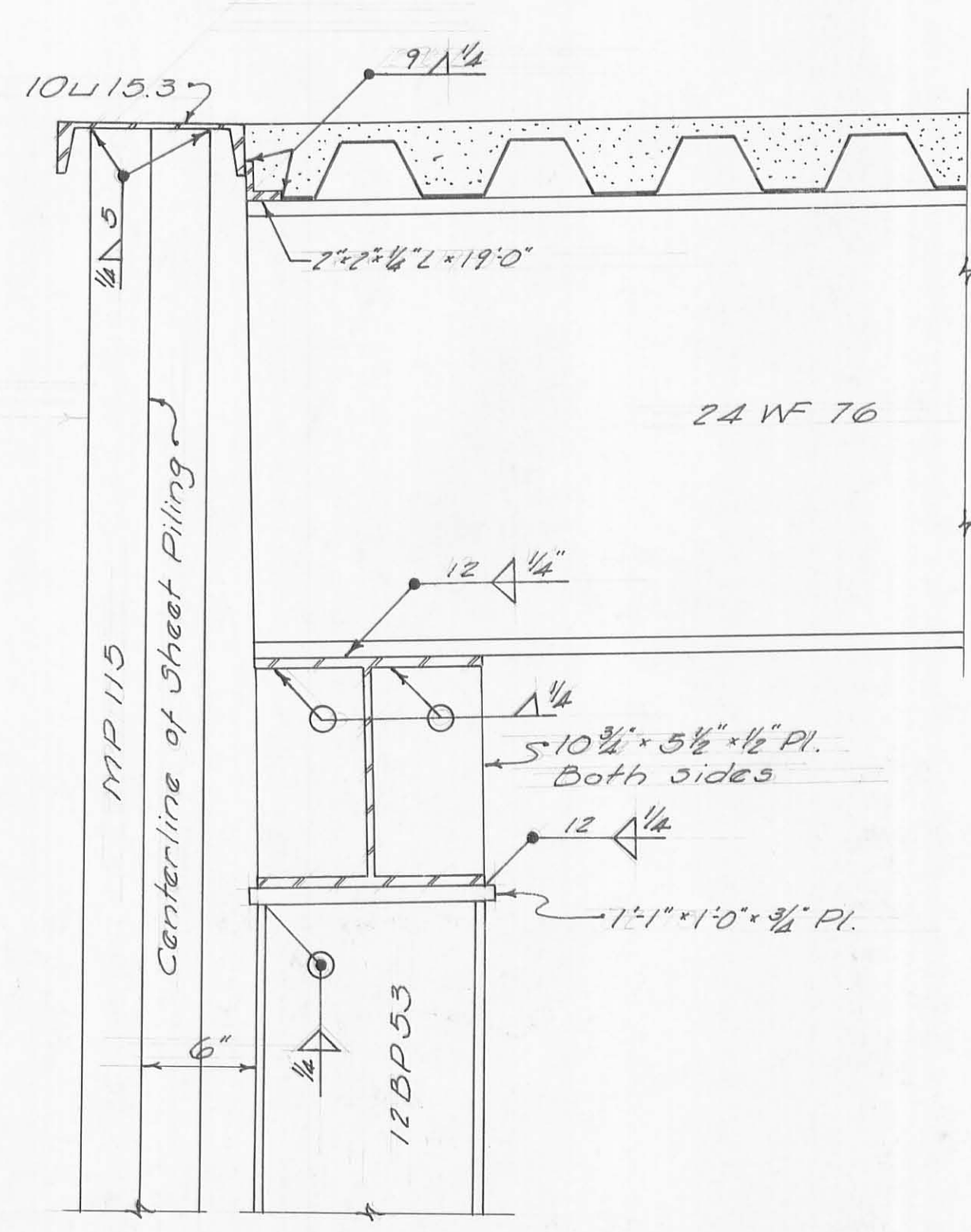
STEEL FRAMING PLAN
 1/8" = 1'



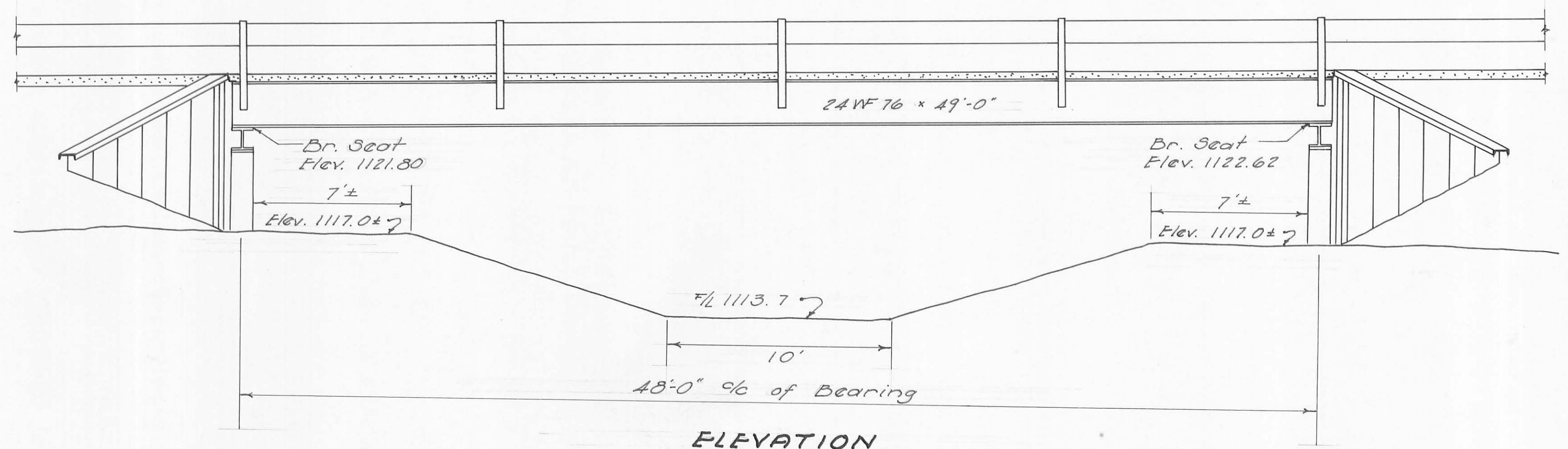
PILING PLAN
 1/2" = 1'



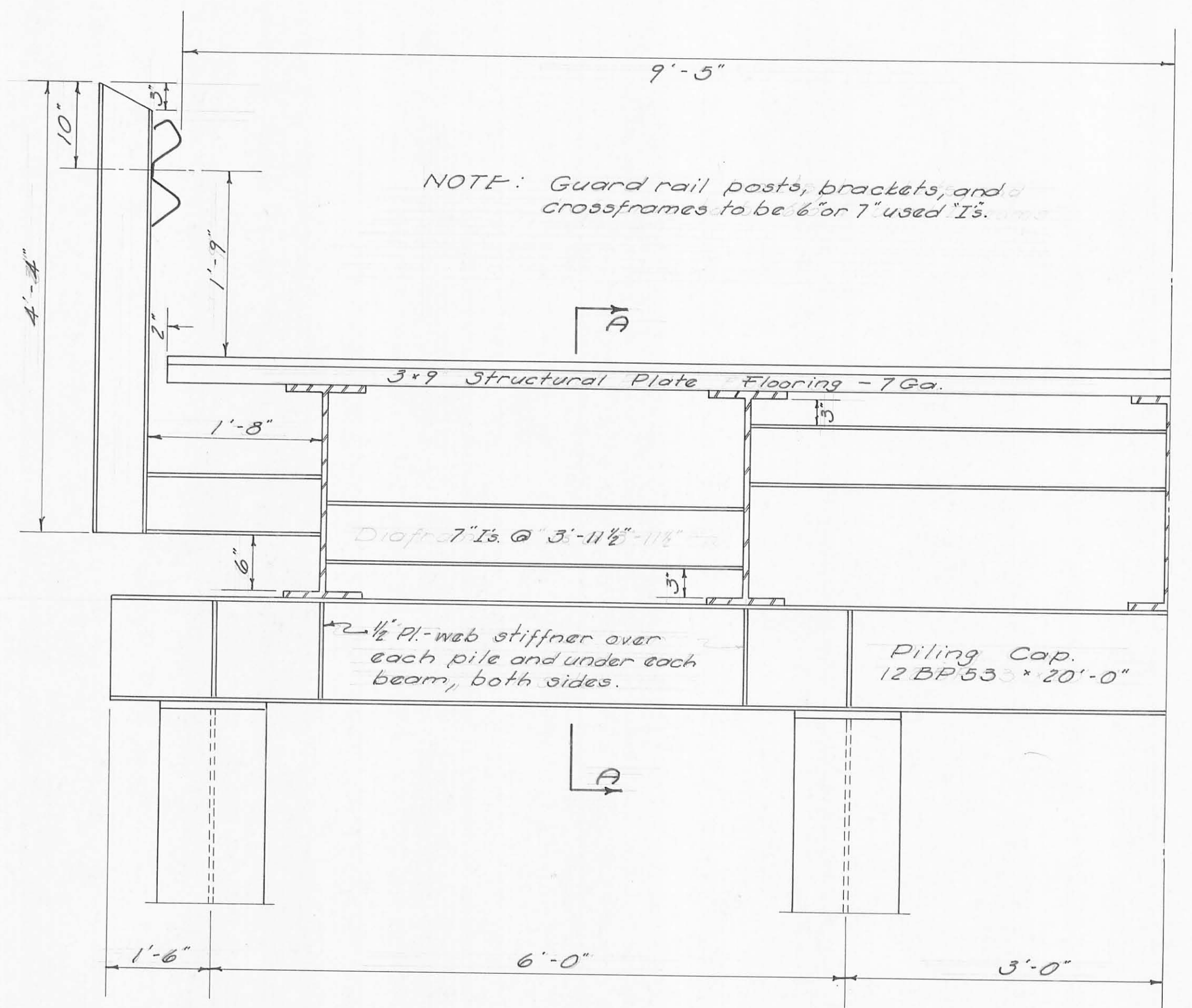
EXPANSION END
 1/2" = 1'



SEC. A-A
 FIXED END
 1/2" = 1'



ELEVATION
 1/4" = 1'



HALF SECTION
 1" = 1'

NOTE: Guard rail posts, brackets, and crossframes to be 6" or 7" used 'Is.

BRIDGE No. 32-175			
OVER McKEE'S CREEK			
LIBERTY TOWNSHIP			
LOGAN COUNTY, OHIO			
DESIGN	DRAWN	CHECKED	FILE No.