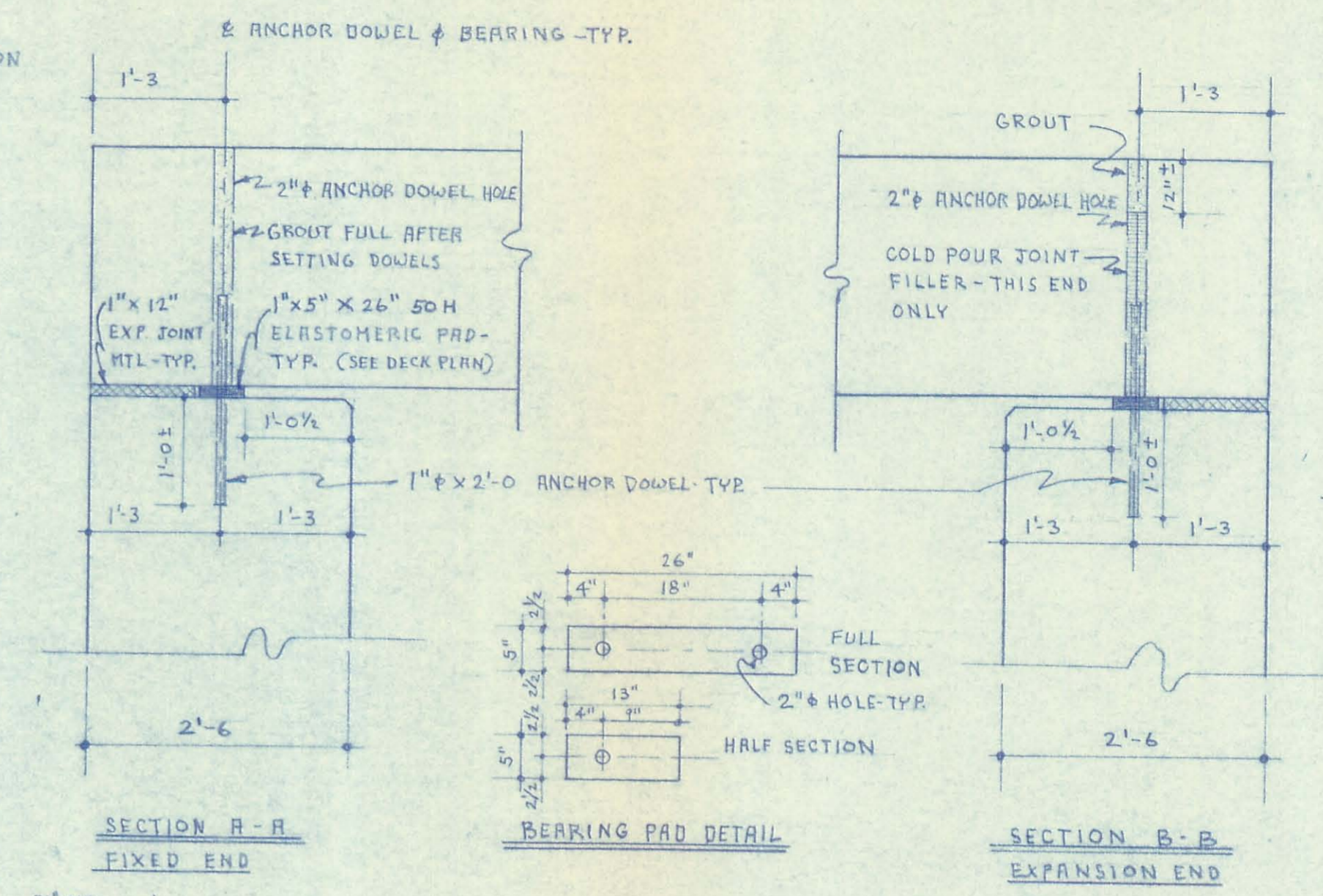
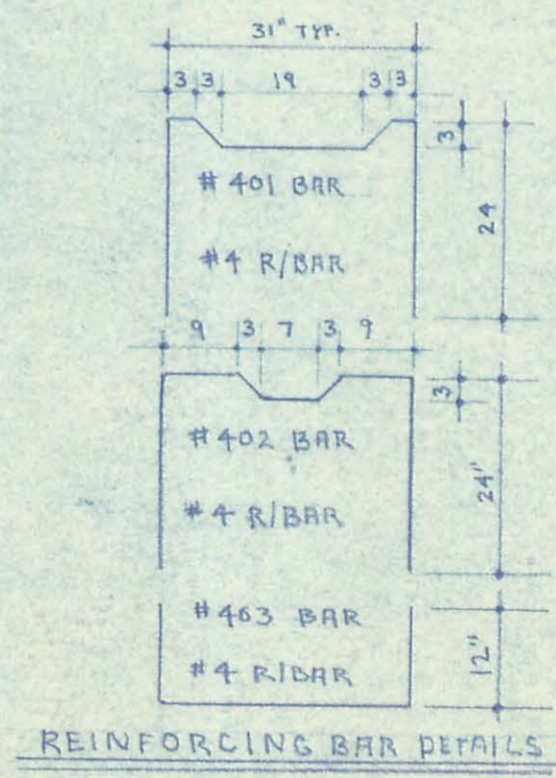


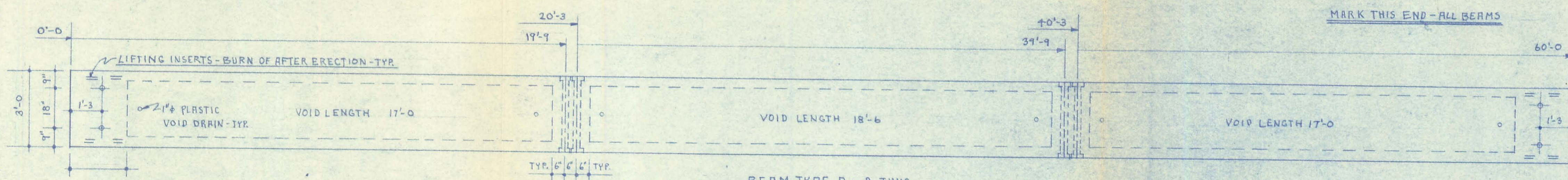
PLAN OF DECK
1/4" = 1'-0"



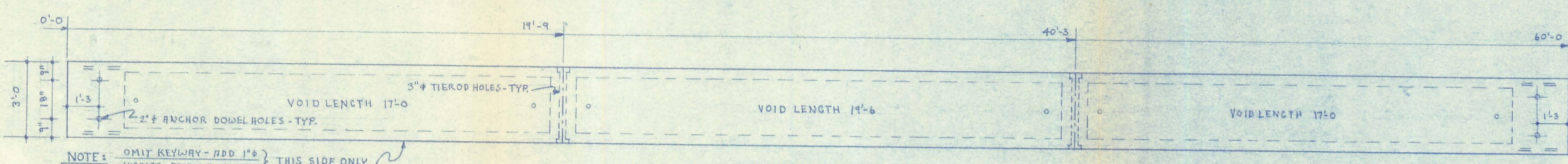
BEARING DETAILS
3/4" = 1'-0"



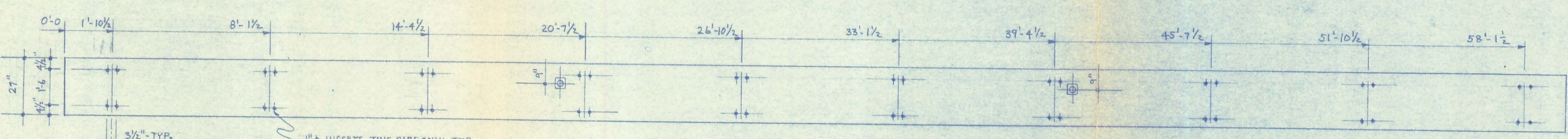
REINFORCING BAR DETAILS
MARK THIS END - ALL BEAMS



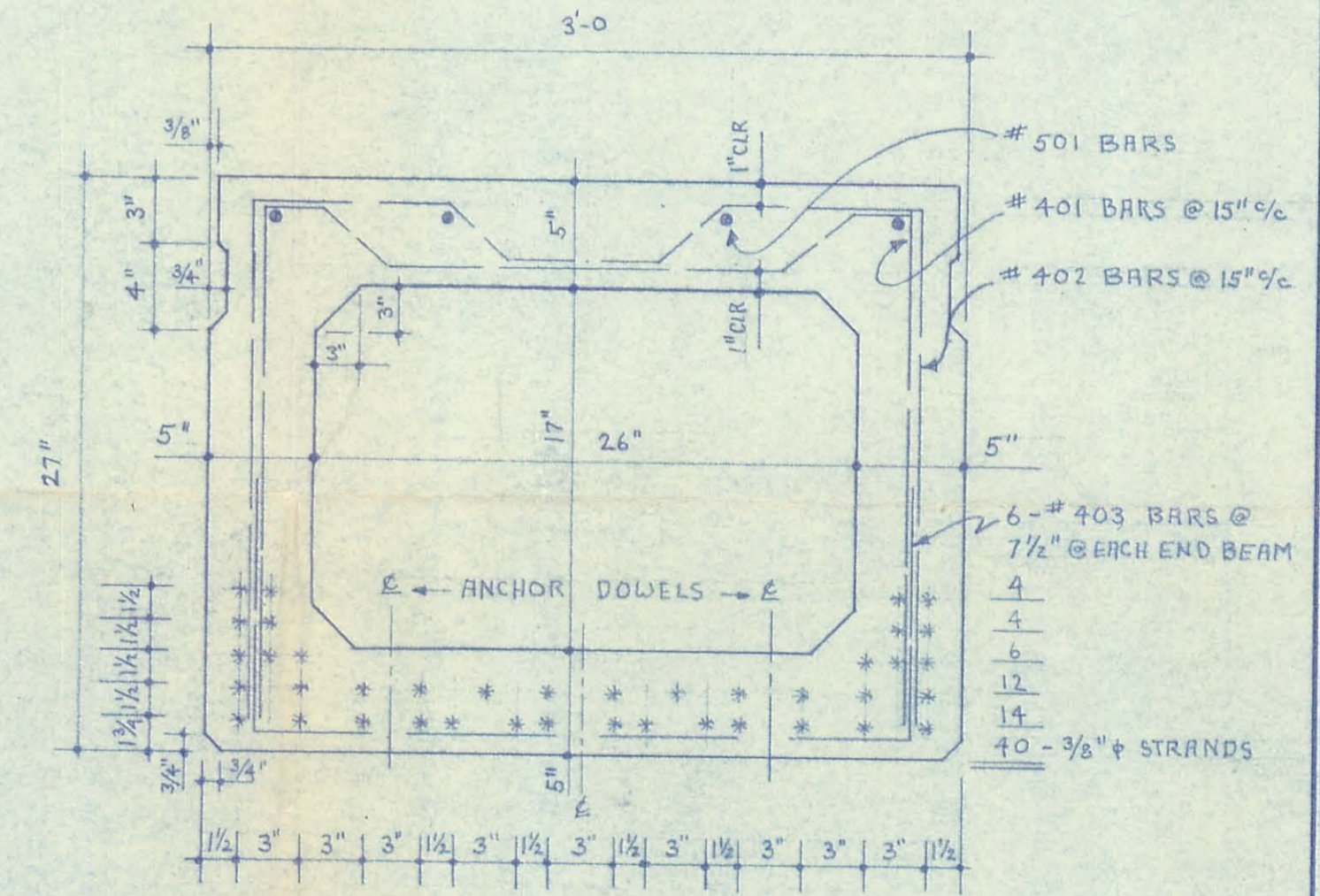
BEAM TYPE A - 8 THUS
3/8" = 1'-0"



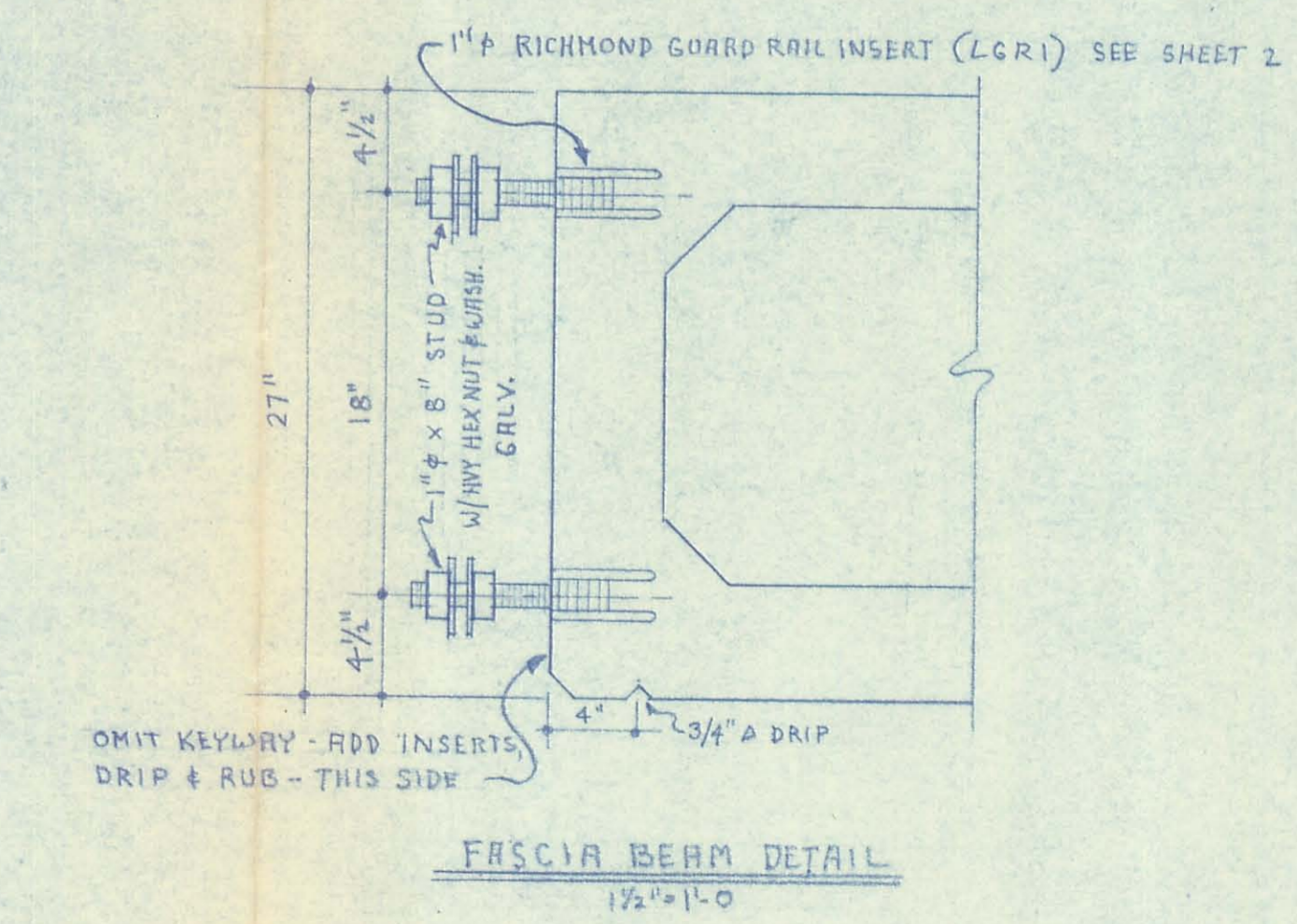
BEAM TYPE B - 2 THUS
3/8" = 1'-0"



BEAM TYPE B - ELEVATION
3/8" = 1'-0"



TYPICAL SECTION
1 1/2" = 1'-0"



- MATERIALS**
- 10 - PRECAST PRESTRESSED CONCRETE BOX BEAMS B27-36 X 60'-0"
 - 18 - FULL SIZE ELASTOMERIC BEARING PADS - 1" X 5" X 26"
 - 4 - HALF SIZE ELASTOMERIC BEARING PADS - 1" X 5" X 13"
 - 6 - TIERODS 1" X 12'-0" LHM WITH NUTS & WASHERS
 - 40 - ANCHOR DOWELS 1" X 2'-0"
 - 80 - GUARD RAIL STUDS 1" X 8" W/ 2 HEX NUTS & 2 WASHERS PER STUD - ALL GALV.
 - 61 - LIN. FT. OF 1" X 12" EXPANSION JOINT MATERIAL
- ERECTOR INCLUDING DRILLING & SETTING ANCHOR DOWELS - INSTALLING TIERODS - GROUTING KEYWAYS - THREADING STUDS INTO INSERTS.**
- DESIGN LOADING 520-40
 - f_c - 4000 PSI
 - f_s - 5500 PSI
 - STRAND - 3/8" UNCOATED SEVEN WIRE STRESS RELIEVED W/ INITIAL TENSION OF 14000 PSI
 - WEIGHT 17.8 TONS

NOTES

LOGAN COUNTY BRIDGE NO. 28 - 2.17

DWG.	HWY	JOB NO.
CHECK		B10
DATE	4-9-88	
REVISIONS		SHEET NO.
		1 of 2

ARCHITECT: LOGAN COUNTY ENGINEERING DEPT.
ENGINEER: CHESTER R. KURTZ, P.E.
CONTRACTOR: GREAT LAKES STRUCTURAL CONCRETE PRODUCTS, INC.

3901 SOUTH AVENUE TOLEDO, OHIO 43615 536-4895 (419)

GREAT LAKES STRUCTURAL CONCRETE PRODUCTS, INC.