

**GENERAL NOTES:**

1. MANUFACTURE BEAMS IN ACCORDANCE WITH ODOT SPECIFICATIONS.
2. MINIMUM CONCRETE STRENGTH @ RELEASE OF STRAND = 4,000 P.S.I. MINIMUM CONCRETE STRENGTH @ 28 DAYS = 5,500 P.S.I.
3. STRAND SHALL BE (7) WIRE, UNCOATED, LOW RELAXATION, 1/2" "REGULAR" DIAMETER (A s= 0.153 IN2), GRADE 270
4. PULL EACH STRAND TO 30,982 LBS.
5. STEEL GRADE 60, A.S.T.M. A-615.
6. BROOM-FINISH TOPS OF BEAMS
7. HS20-44 & THE ALTERNATE MILITARY LOADING.
8. CONCRETE MIX SHALL INCLUDE ODOT APPROVED CORROSION INHIBITOR; DOSAGE SHALL BE PER MANUFACTURER'S RECOMMENDATIONS.
9. ALL ANCHOR BOLTS, STUDS, INSERTS, TIE RODS, NUTS, & WASHERS SHALL BE GALVANIZED, PER ODOT SPECIFICATIONS.
10. KEYWAYS SHALL RECEIVE A MEDIUM SANDBLAST AT PLANT WITHIN FOUR DAYS PRIOR TO SHIPPING.
11. BEAM ENDS SHALL BE SEALED W/ BITUMINOUS COATING @ CUT STRAND LOCATIONS.

**BRIDGE PLAN**

NOTE:  
P.S.M. SHALL FURNISH, INCIDENTAL TO BEAMS:

- (50) 1" Ø HEX NUTS
- (50) 1/2" X 4" SQ. PLATE WASHERS
- (25) 1" Ø TIE ROD 8'-0" LONG
- (12) 1" Ø X 4'-6" (GALV.) SMOOTH DOWEL RODS
- (50) 1" X 3" P.E.J.F.
- (80) 7 STRAND JUTE + INTERPLAST-N GROUT ADDITIVE
- (24) ODOT TYPE 2 POSTS, INSTALLED USING:
  - (96) 1 1/4" Ø X 8" STUDS (ALL THREADED)
  - (192) 1 1/4" Ø HEX NUTS
  - (192) WASHERS
- (24) 1/8" X 7" X 1'-10" SHIM PADS
- (24) ELASTOMERIC BEARING PADS
- (1" X 6" X 1'-0" -70 DUROMETER)
- (12) 1" X 6" X 6" PEJF
- (175) STD. DEEP BEAM GUARDRAIL
- (175) TUBULAR BACK-UP
- (8) SPLICES FOR TUBULAR BACK-UP
- (8) W6 X 25 APPROACH POSTS, 6'-9" LONG

*Revised*

MARK NO.	NO. REQD.	SHIPPING WEIGHT
01	1	85,115 LBS.
02	4	86,722 LBS.
03	1	85,115 LBS.

**PROJECT OVERVIEW**

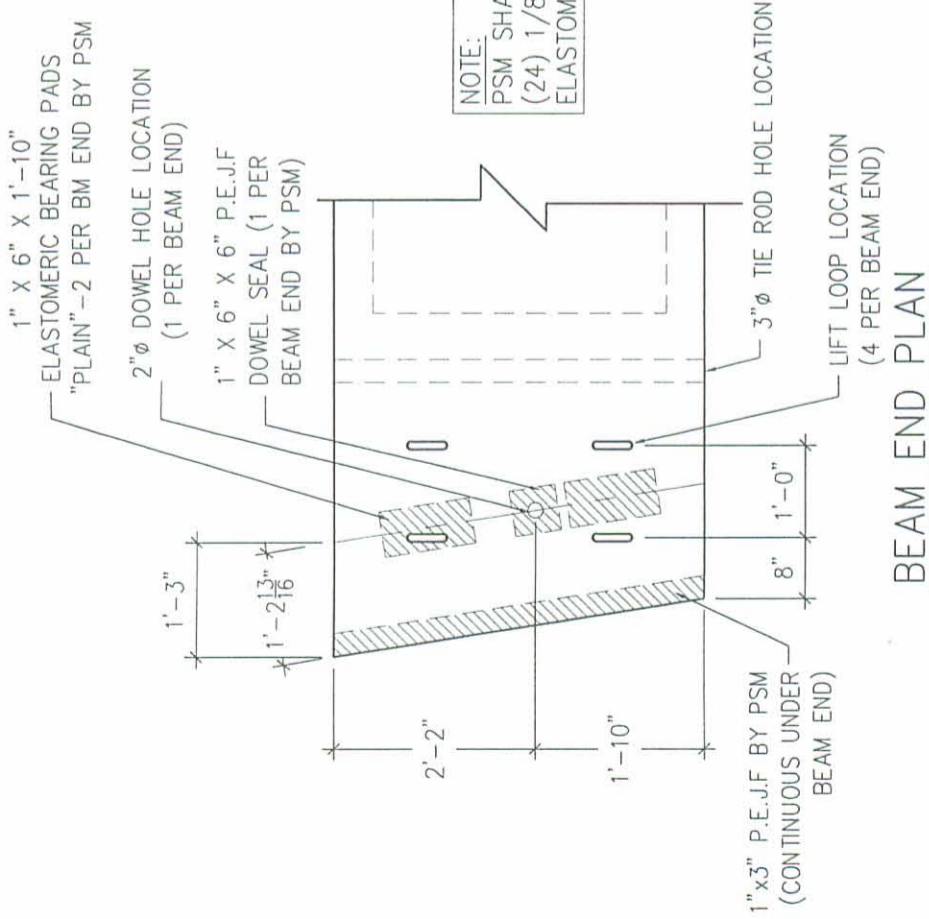
LOGAN COUNTY, OHIO  
BR. #21-3.07  
C.R. 21 / RUM CREEK

CONTRACTOR: COUNTY FORCES  
PRODUCING PLANT: P.O. BOX 211  
STATE ROUTE 8  
MELBOURNE, KY 41059  
PH: (859) 441-0068 PH: (859) 441-0068  
FAX: (859) 441-7986 FAX: (859) 441-7986

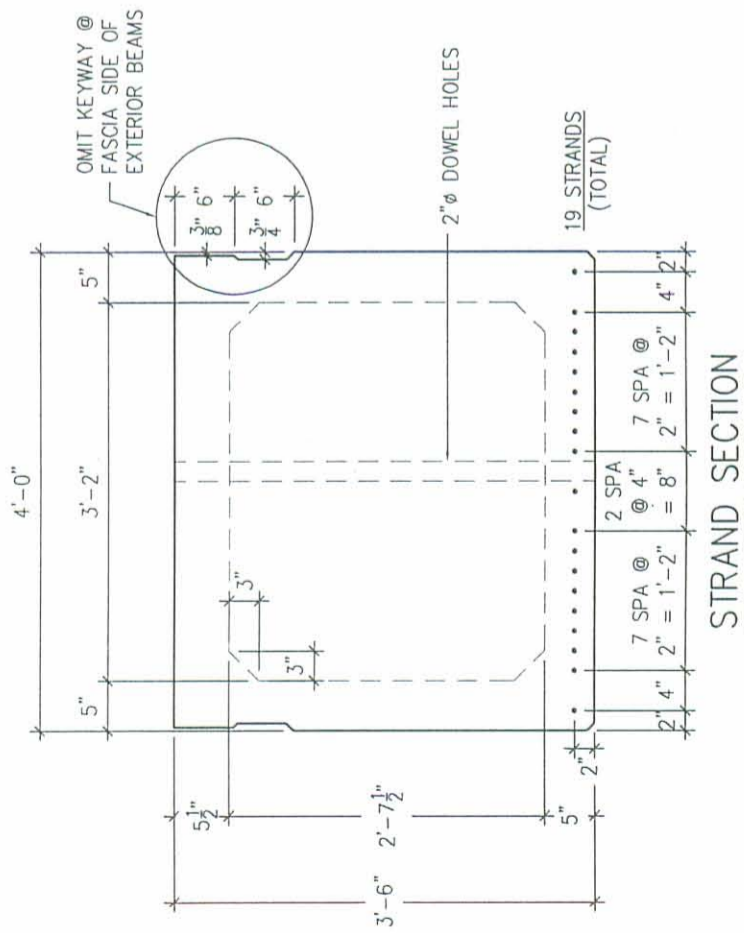
DATE: 12-05-02 | DRAWN BY: EDD | CHECKED: GDA  
PER ENGINEER'S SPECS.

REVISIONS	DATE	DESCRIPTION
1	12-05-02	ISSUED FOR PERMITS
2	01-06-03	PER ENGINEER'S SPECS.

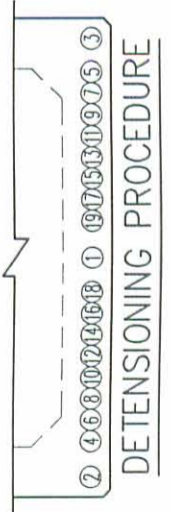
CODE: SHEET: 1 of 5 JOB NO: M2300



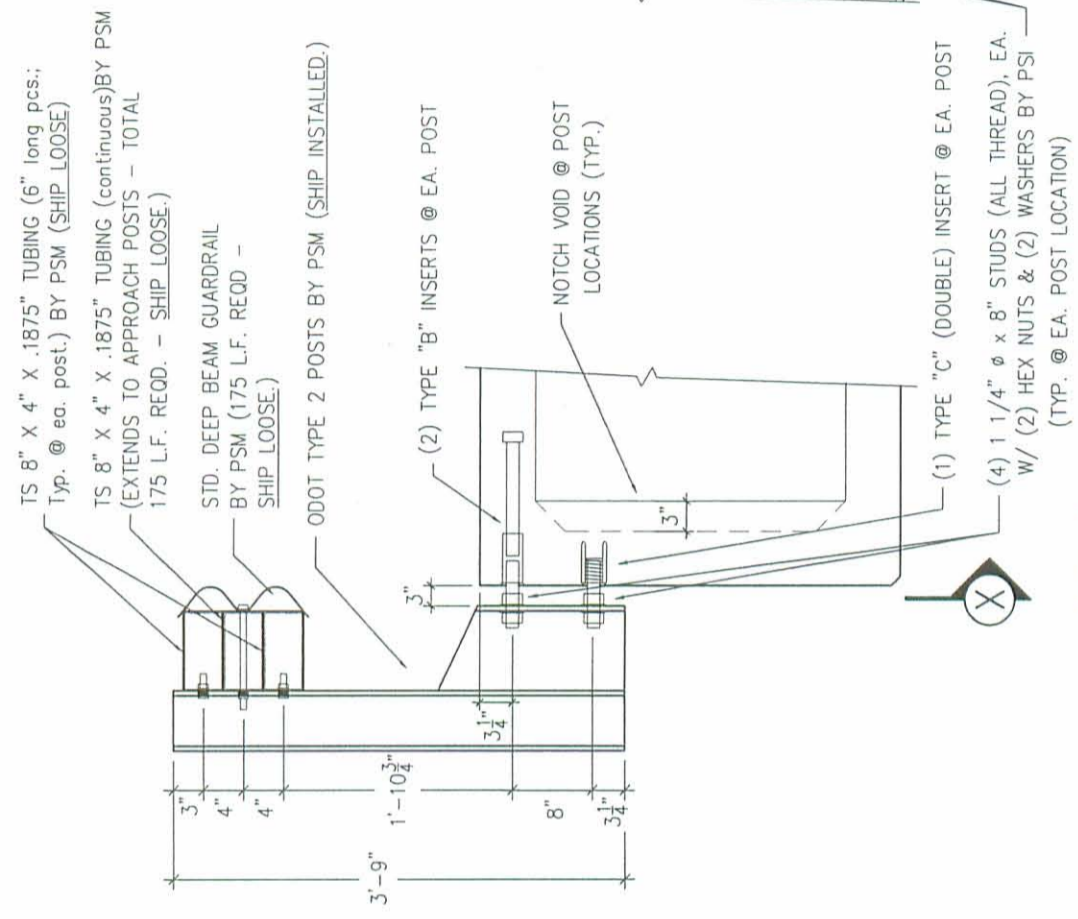
**BEAM END PLAN**



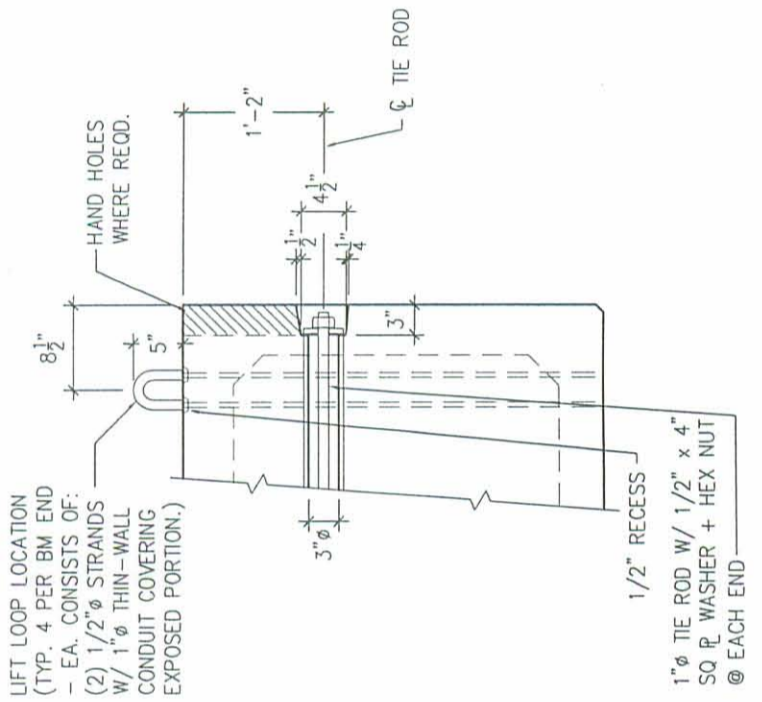
**STRAND SECTION**



**DETENSIONING PROCEDURE**



**GUARDRAIL DETAIL**



**TIE ROD DETAIL**

**STRAND & DETAILS**

LOGAN COUNTY, OHIO  
BR. # 21-3.07  
C.R. 21 / RUM CREEK

CONTRACTOR: COUNTY FORCES

PRODUCING PLANT: STATE ROUTE 8

P.O. BOX 211

MELBOURNE, KY 41059

PH: (859) 441-0068

FAX: (859) 441-7986

DATE: 12-05-02

DRAWN BY: EDD

CHECKED: GDA

REVISIONS

REVISIONS

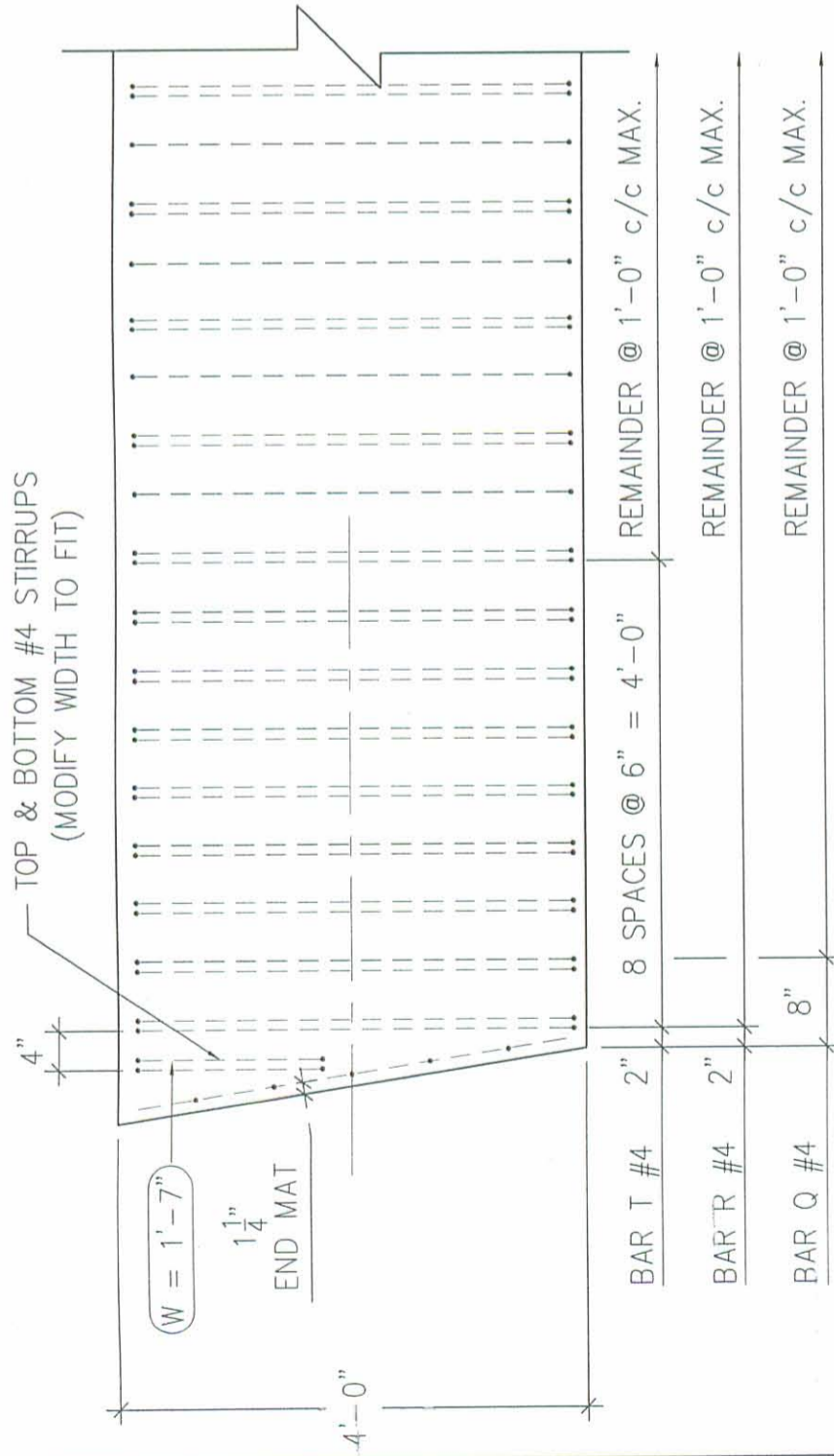
REVISIONS

REVISIONS

REVISIONS

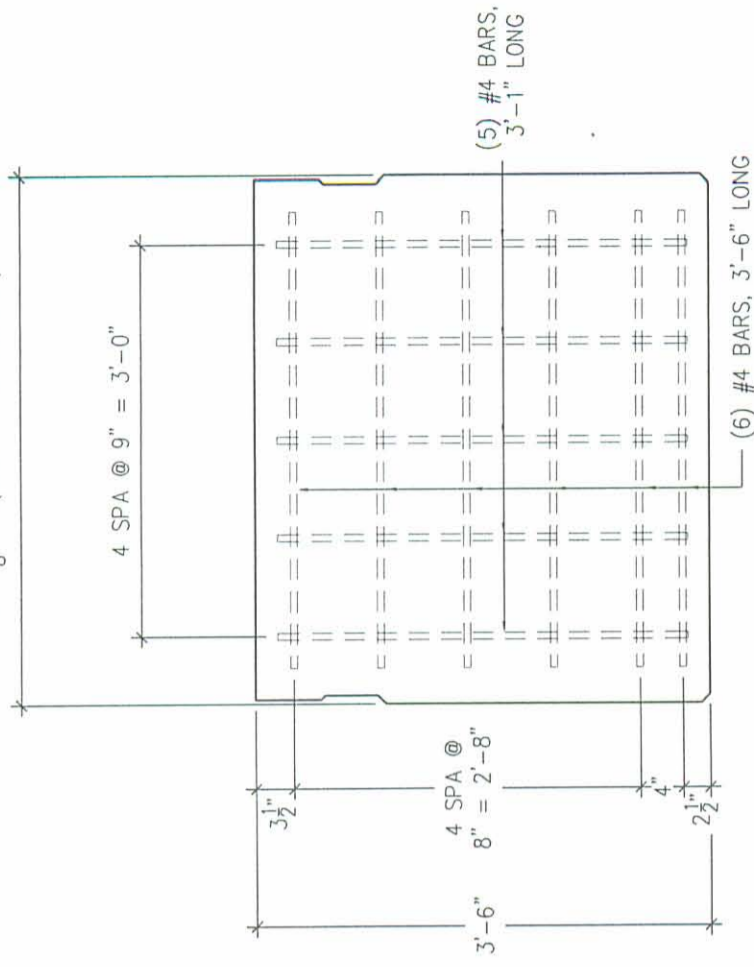
REVISIONS

TOP & BOTTOM #4 STIRRUPS  
(MODIFY WIDTH TO FIT)



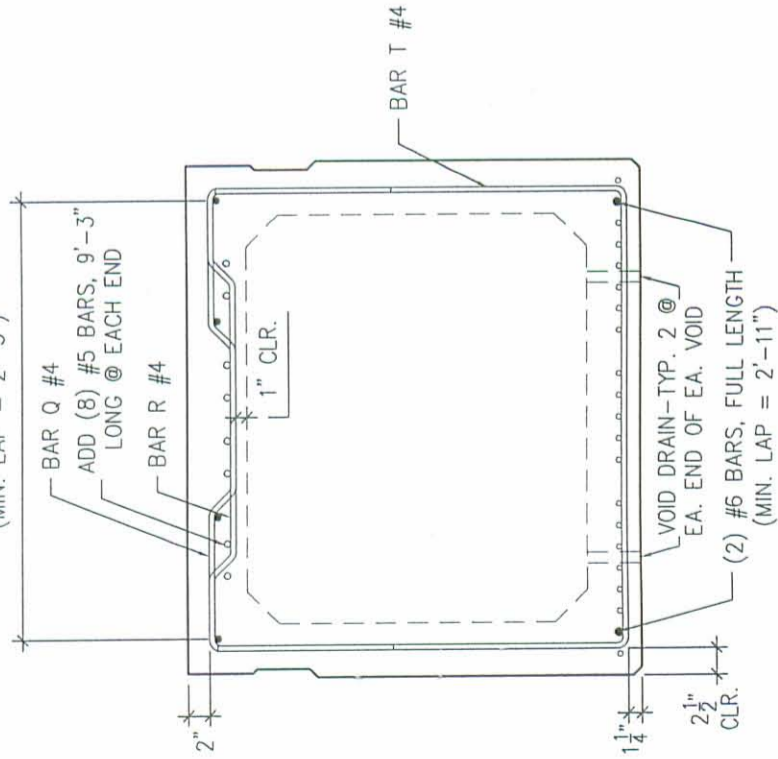
**REINFORCEMENT PLAN**  
(SHOWING STIRRUP SPACING)

4'-0 5/8" - (ALONG SKEWED END)



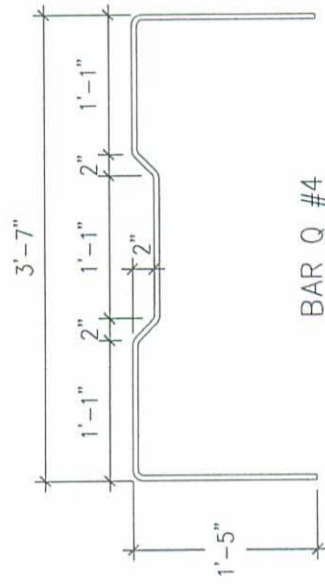
**ABUT. END MAT DETAIL**

(4) #5 BARS, FULL LENGTH  
(MIN. LAP = 2'-5")

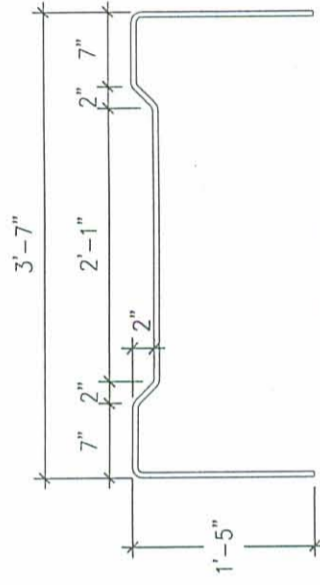


**STEEL SECTION**

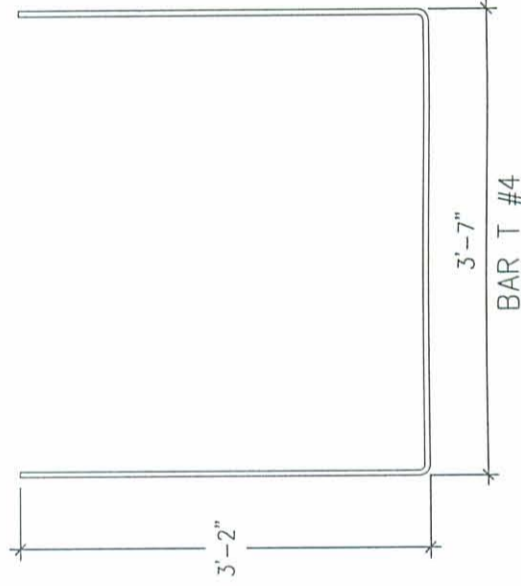
STIRRUP QUANTITIES PER BEAM		
MARK	BAR SIZE	NO. REQD.
BAR Q	# 4	79
BAR R	# 4	80
BAR T	# 4	88



BAR Q #4



BAR R #4



BAR T #4

**BENDING DIAGRAM**

**STEEL DETAILS**

LOGAN COUNTY, OHIO  
BR. # 21-3.07  
C.R. 21 / RUM CREEK

CONTRACTOR: COUNTY FORCES

PRODUCING PLANT: STATE ROUTE 8  
MELBOURNE, KY 41059  
PH: (859) 441-0068  
FAX: (859) 441-7986

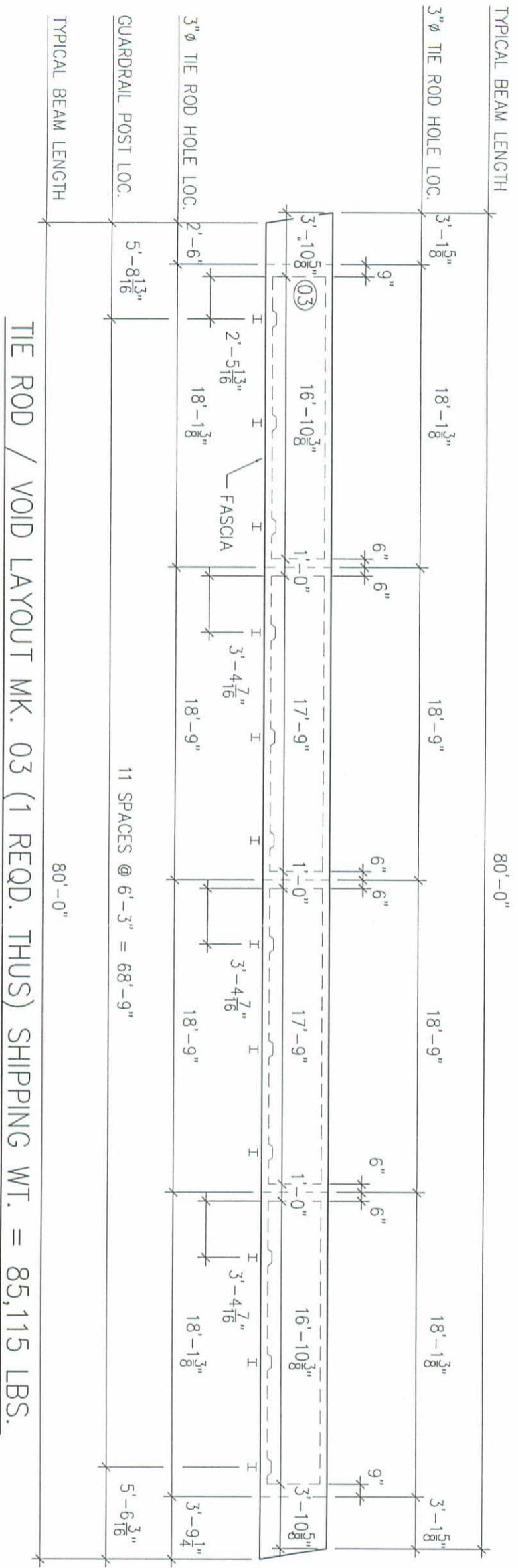
DRAFTING OFFICE: P.O. BOX 211  
MELBOURNE, KY 41059  
PH: (859) 441-0068  
FAX: (859) 441-7986

DATE: 12-05-02 DRAWN BY: EDD CHECKED: GDA

REVISIONS

CODE: SHEET: 3 of 5 JOB NO: M2300





TIE ROD / VOID LAYOUT MK. 03 (1 REQD. THUS) SHIPPING WT. = 85,115 LBS.

BEAM LAYOUTS

LOGAN COUNTY, OHIO  
 BR. # 21-3.07  
 C.R. 21 / RUM CREEK

CONTRACTOR: COUNTY FORCES

PRODUCING PLANT: DRAFTING OFFICE:  
 STATE ROUTE 8 P.O. BOX 211  
 MELBOURNE, KY 41059 MELBOURNE, KY 41059  
 PH: (859) 441-0068 PH: (859) 441-0068  
 FAX: (859) 441-7986 FAX: (859) 441-7986

DATE: 12-05-02 DRAWN BY: EDD CHECKED: GDA

REVISIONS	DATE	BY	CHECKED

CODE: SHEET: 5 of 5 JOB NO: M2300