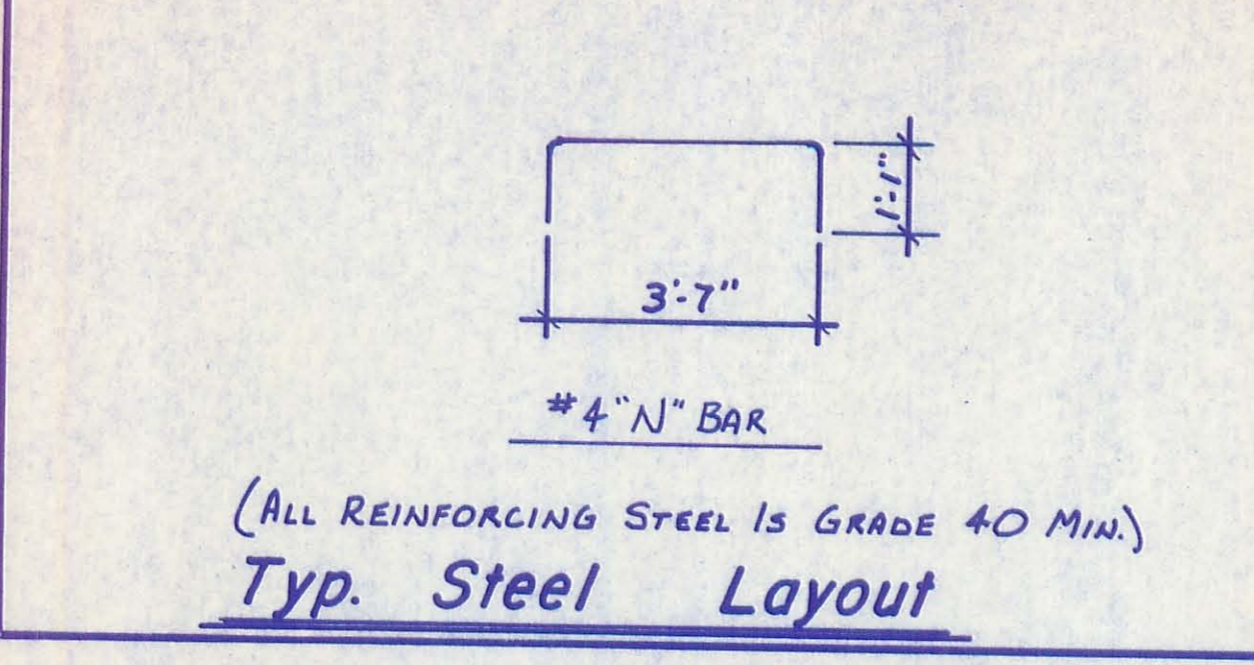
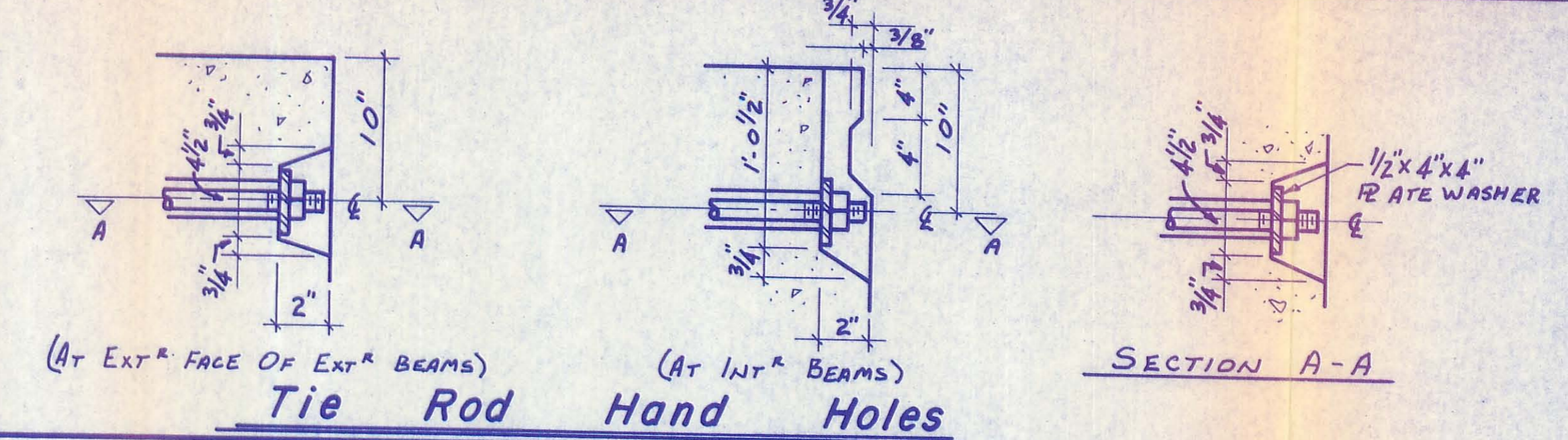


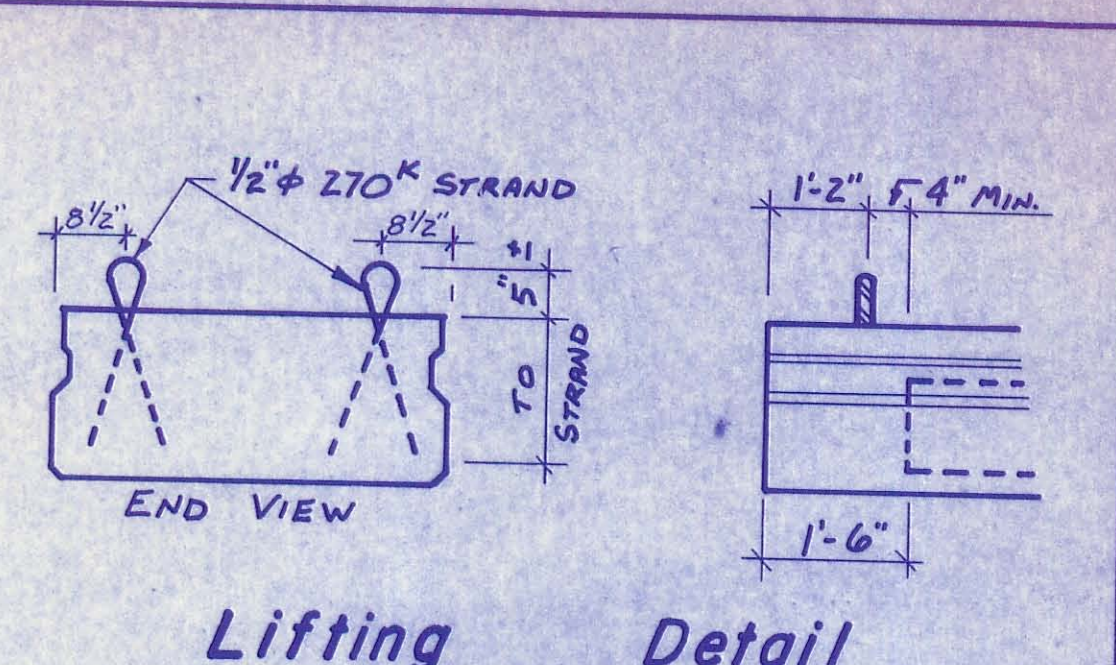
Typ. Cross Section



Typ. Steel Layout

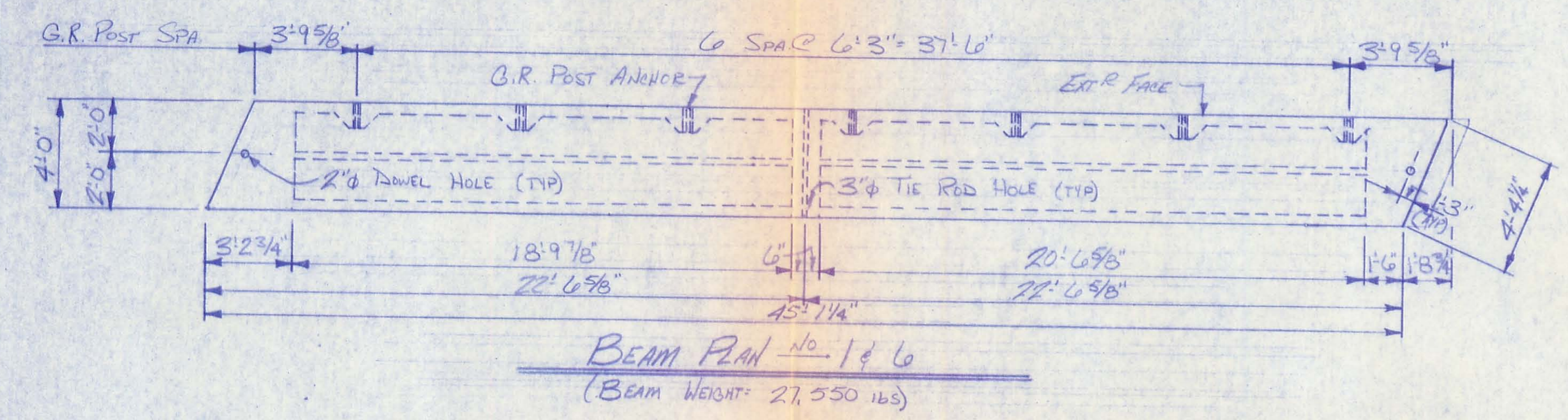


Tie Rod Hand Holes

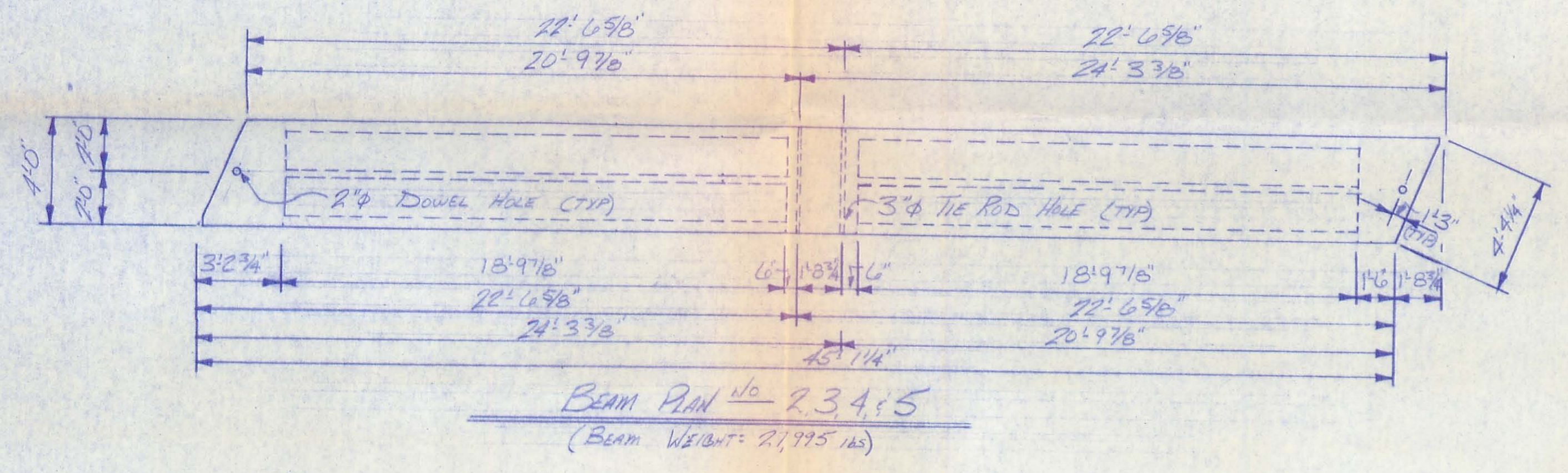


Lifting Detail

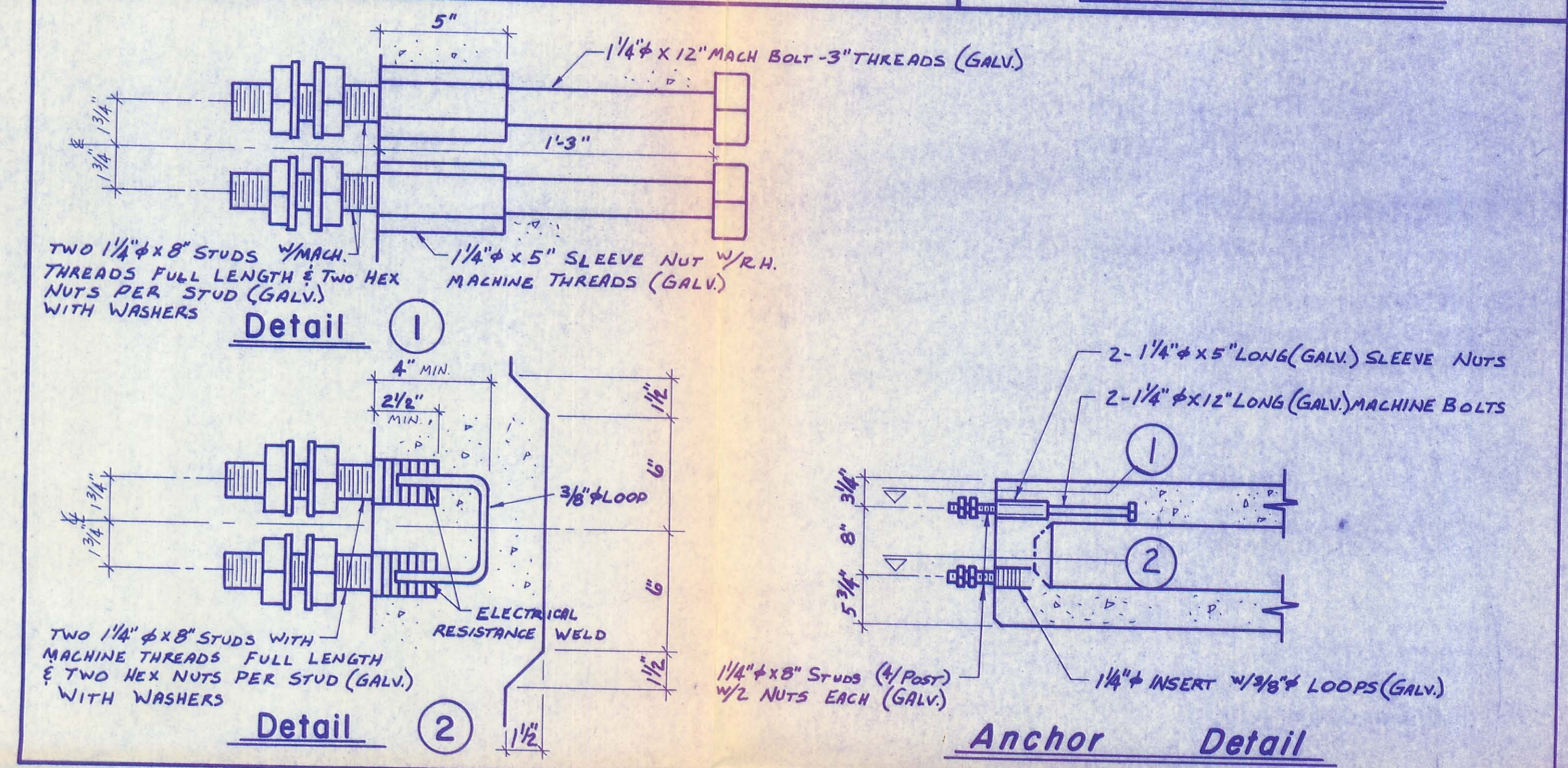
Initial Pull Per Strand = 28,900 lbs.
 20 - 1/2" 270K STRANDS
 ○ = DEBOND 2 STRANDS @ 1'-6" (EA. END)
 ▲ = DEBOND 2 STRANDS @ 2'-6" (EA. END)
 □ = DEBOND 2 STRANDS @ 3'-6" (EA. END)



BEAM PLAN No. 1 & 6
(Beam Weight = 27,550 lbs)



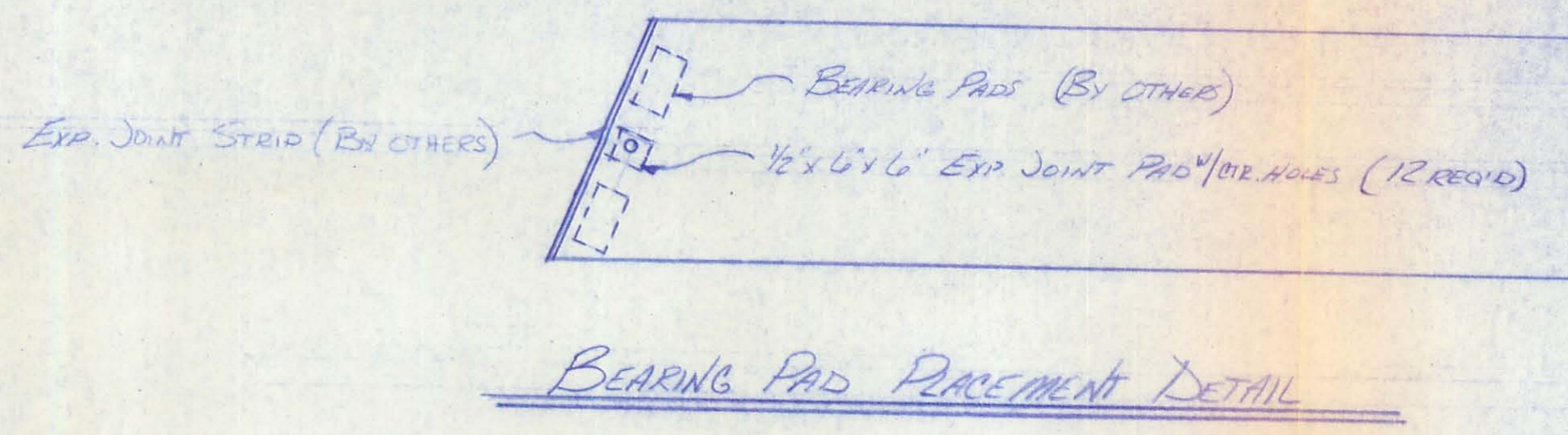
BEAM PLAN No. 2, 3, 4, & 5
(Beam Weight = 27,995 lbs)



Detail 1

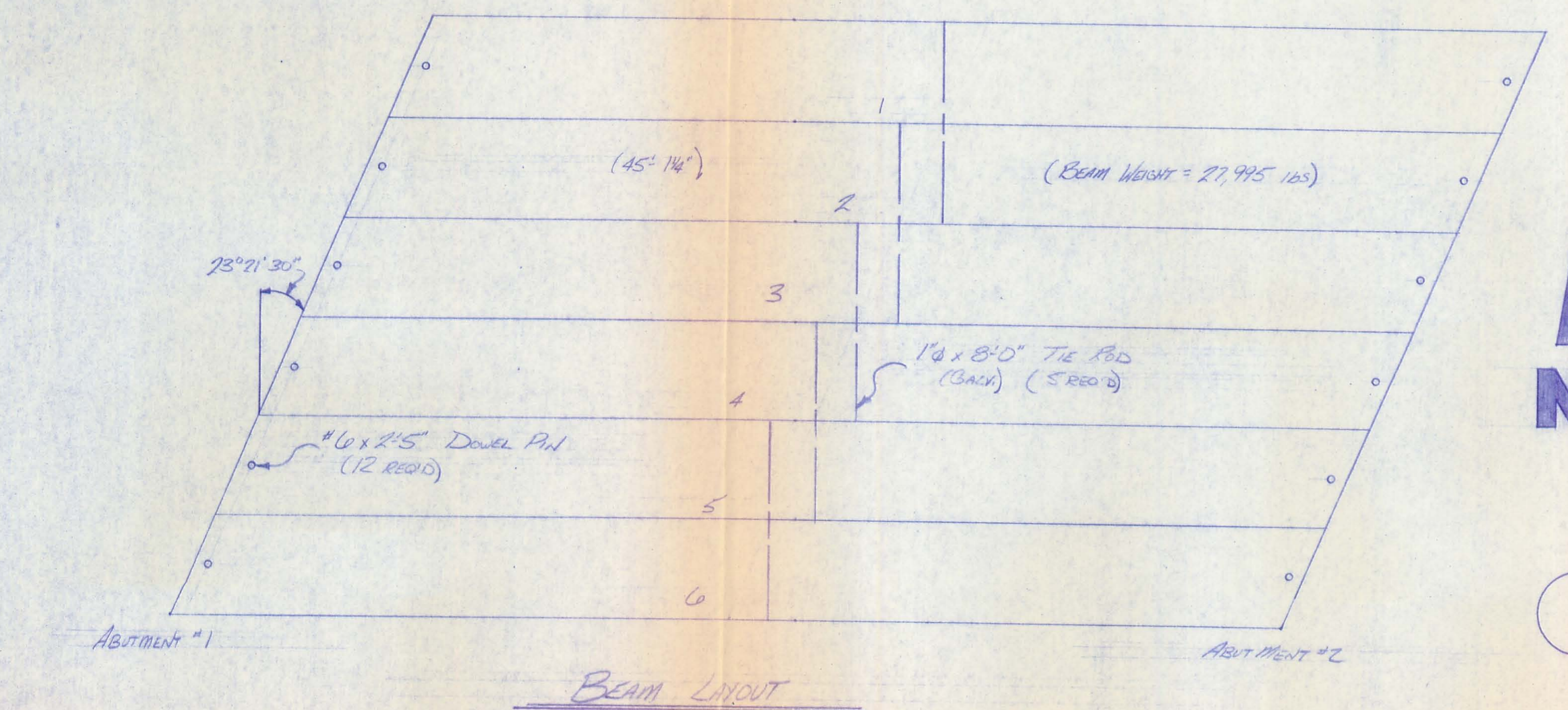
Detail 2

Anchor Detail



BEARING PAD PLACEMENT DETAIL

Checked & Approved
 7-19-88
 J. Mack Co. P.E.
 Deputy Logan Co. Engr.



BEAM LAYOUT

NOTES
 1. Conc. Str. At Time Of Prestressing = 4,000 P.S.I. at 28 Days = 5,500 P.S.I.
 2. Detension Strand Symmetrically About Bm. Center Line.
 3. Waterproof Beam Ends.
 4. Omit Keyway On Extr. Face Of Extr. Beams.
 5. Loading = HS-20-44; INTERSTATE MILITARY
 6. Beam Weight = (SEE BEAM PLANS)
 7. Top Surface Of Beam Given A Flat Floor Finish

CHANGE NOTES: Changes Are Noted As Different From O.D.O.T. Std. Dwg. P.S.D.B.-1-81 & Are Varied Per Note On Dwg. P.S.B.D.-1-81 sht. 2 of 4.
 1. 3/4" Keyway To 4/4" Keyway.
 2. Tie Rod Hand Hole From 9" to 10"

REVISIONS		Br.No.207-2.29 Logan Co, Ohio.	
No.	By	Contractor - Wren Reese Inc.	
		SCALE	NONE
		DATE	7-14-88
		DRAWN BY	M.T.
		CHECKED BY	B.A.
		JOB NO.	0294
		DRAWING NO.	1 of 1
		PRESTRESS SERVICES, INC Decatur, Indiana	

P.C. # 9204