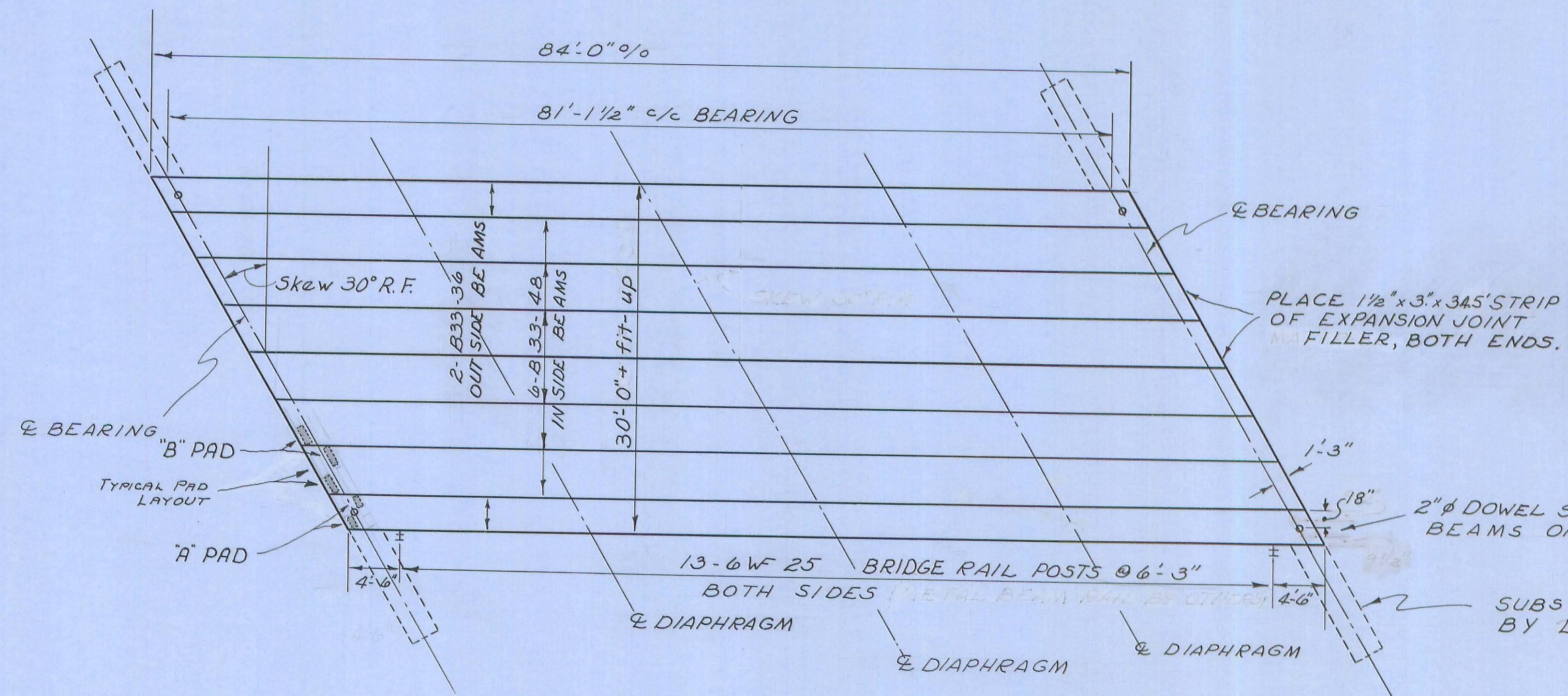
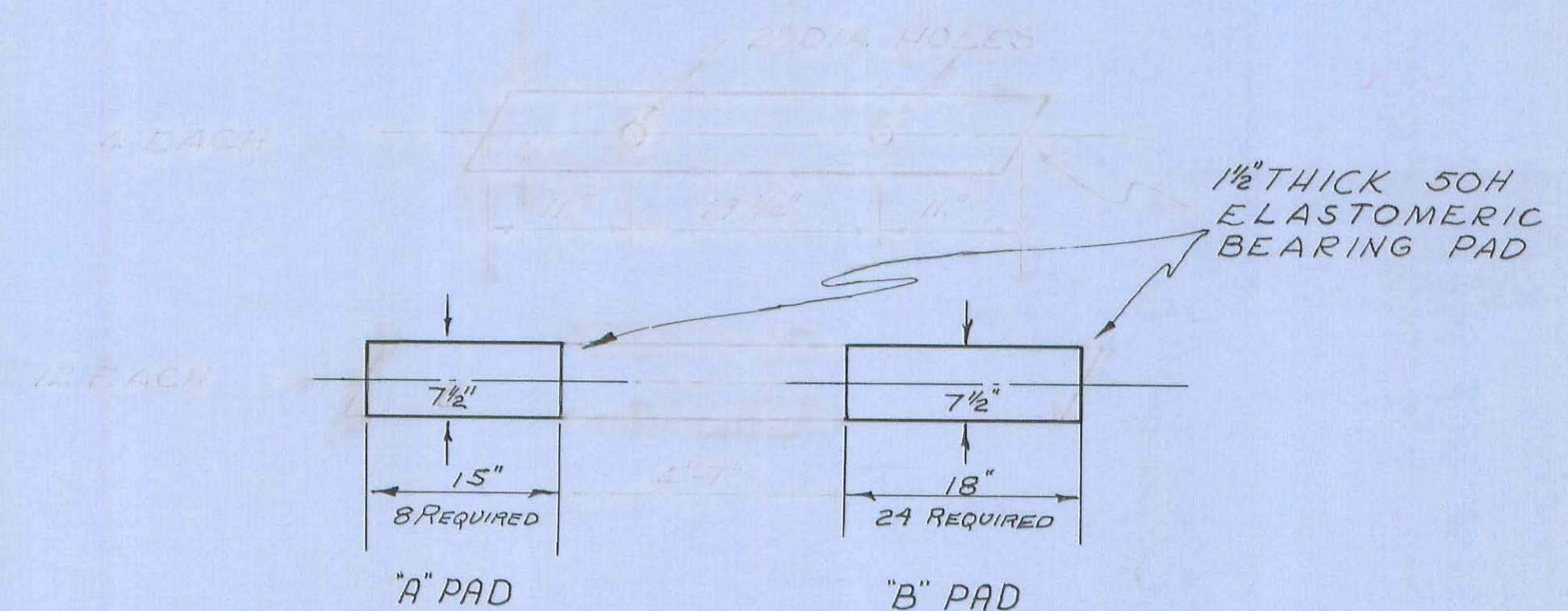


**LOGAN COUNTY  
 CO. RD. ~2 ~ CO. RD. 142  
 T. RD. ~31 ~ T. RD. ~37**

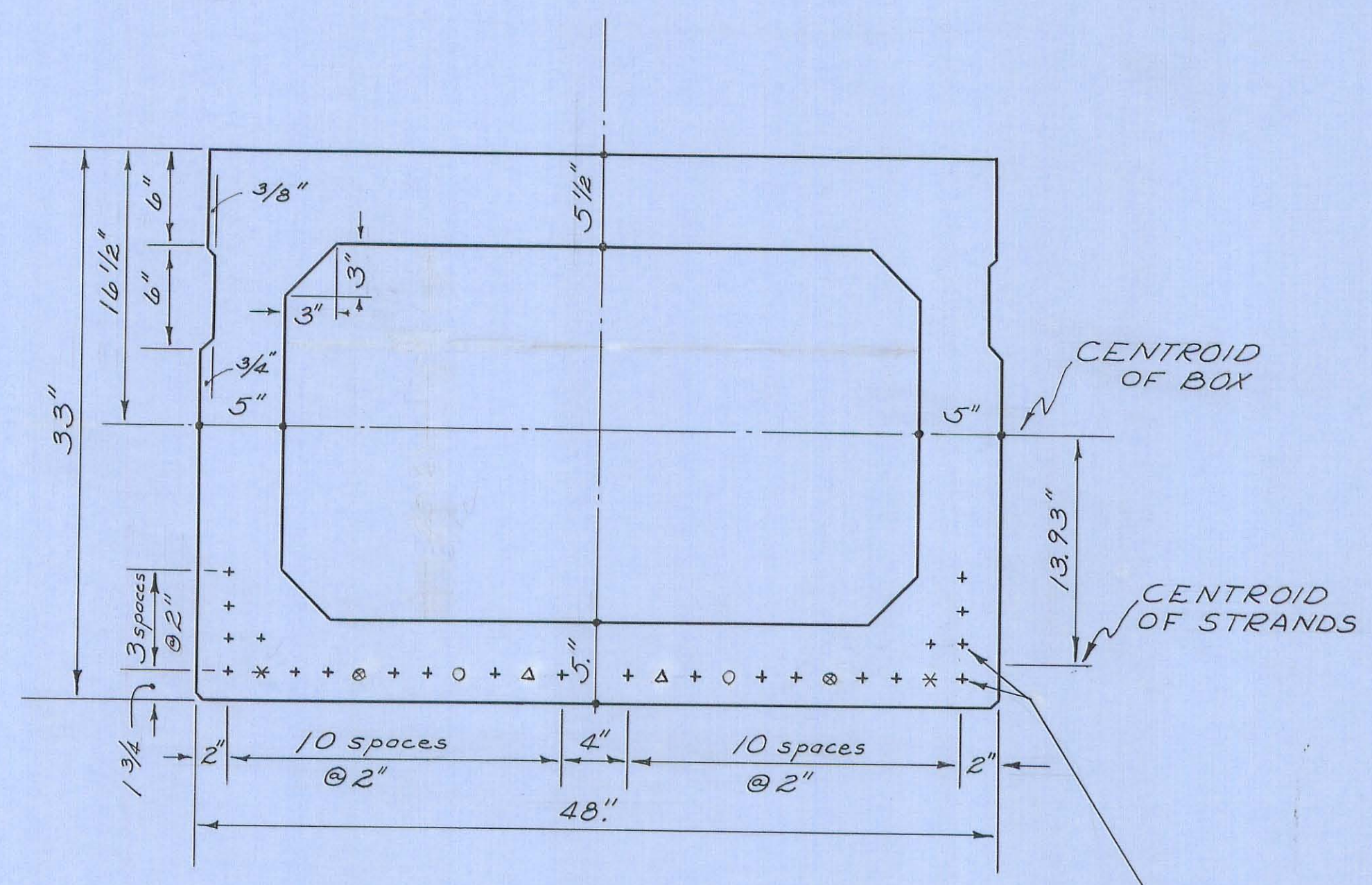


NOTES:  
 B33-36 SHALL BE OUTSIDE BEAMS COMPLETE WITH 1-2" DIA. DOWEL HOLE EACH END.  
 BEAMS SHALL HAVE THREE DIAPHRAGMS 3' WIDE AT APPROXIMATE QUARTER POINTS.  
 DIAPHRAGMS SHALL BE DESIGNED ACCORDING TO PSBD-171 PAGE 2 FOR 48" BEAMS OVER 26°. TIE RODS SHALL BE LOCATED WITHOUT INTERFERING WITH BRIDGE RAIL ANCHORS.

SCHEMATIC PLAN  
 Scale 1/8" = 1'-0"



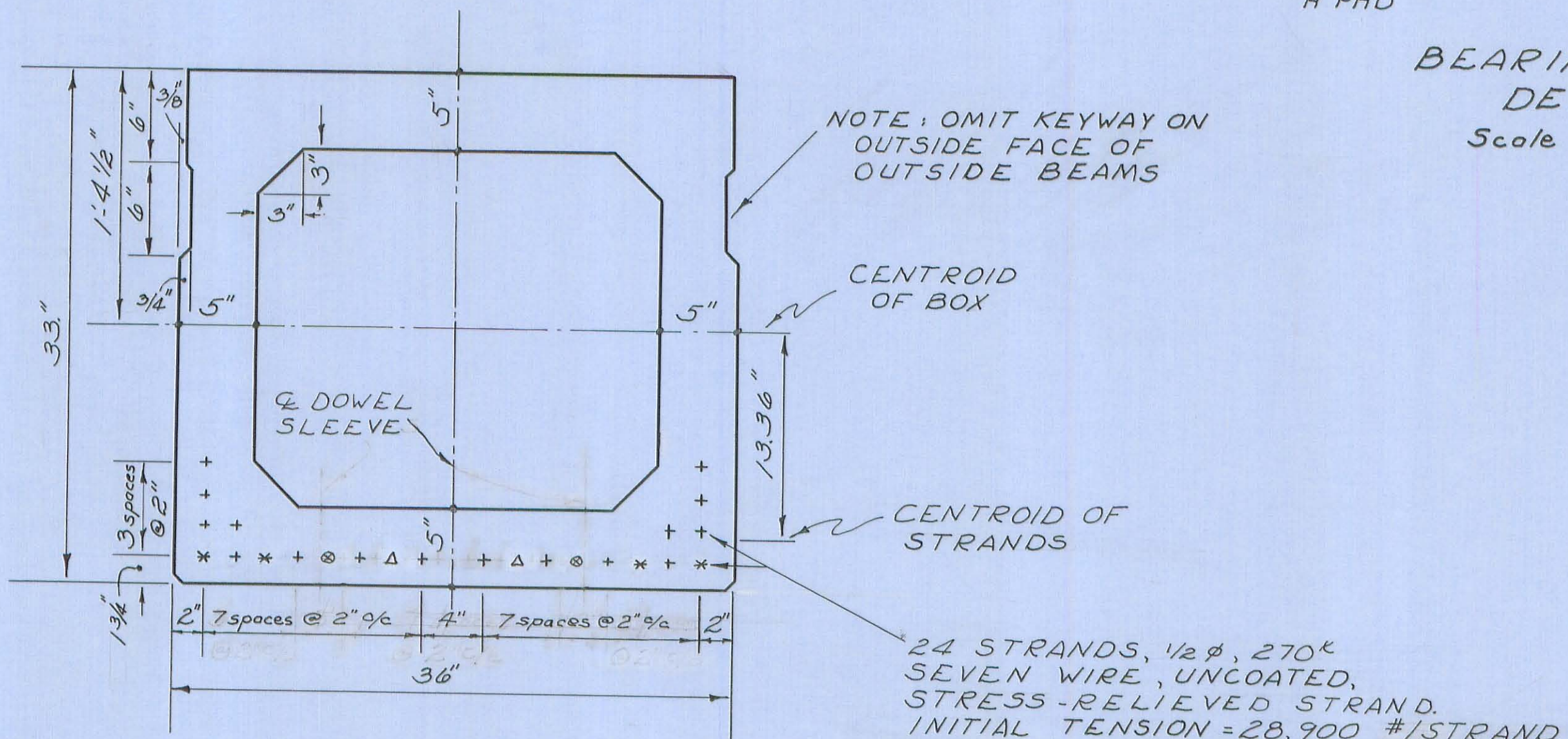
NOTE: 1/8" shims, 1/8" thick, as per T11.21, shall be provided. They shall be the same plan dimension as the bearing pads, and included with the bearing pads for payment.



TYPICAL B33-48  
 STRAND LOCATION  
 Scale 1 1/2" = 1'-0"

30 STRANDS, 1/2" Ø, 270<sup>k</sup> SEVEN WIRE, UNCOATED STRESS-RELIEVED STRAND  
 INITIAL TENSION = 28,900 #/STRAND  
 NUMBER AND LENGTH DEBONDED:  
 \* 2 @ 1'-6"  
 ○ 2 @ 2'-6"  
 ○ 2 @ 4'-0"  
 Δ 2 @ 6'-6"  
 (ALL DEBONDED STRANDS IN BOTTOM ROW, LENGTH MEASURED FROM BEAM END)  
 ADDITIONAL TOP BARS EACH END  
 8 - NO. 5 - 8'-6" LONG  
 INITIAL CAMBER .99 INCHES

REINFORCING: The clearance to the stirrups, in the top of the box, shown as 1" on PSBD-171, shall be 2". This may require the bending diagrams for the stirrups to be revised from what is shown on the standard.



TYPICAL B33-36  
 STRAND LOCATION  
 Scale 1 1/2" = 1'-0"

24 STRANDS, 1/2" Ø, 270<sup>k</sup> SEVEN WIRE, UNCOATED, STRESS-RELIEVED STRAND  
 INITIAL TENSION = 28,900 #/STRAND  
 NUMBER AND LENGTH DEBONDED:  
 \* 4 @ 1'-6"  
 ○ 2 @ 2'-6"  
 Δ 2 @ 6'-6"  
 (ALL DEBONDED STRANDS IN BOTTOM ROW, LENGTH MEASURED FROM BEAM END)  
 ADDITIONAL TOP BARS EACH END  
 5 - NO. 5 - 9'-0" LONG  
 INITIAL CAMBER .91 INCHES

LOGAN COUNTY ENGINEER CHESTER R. KURTZ			
PRESTRESSED BEAM DETAILS LOGAN COUNTY, OHIO BRIDGE NO. 2-716 OVER MILL CREEK PERRY TOWNSHIP			
Design M.W.B.	Drawn M.W.B.	Checked D.L.D.	Approved