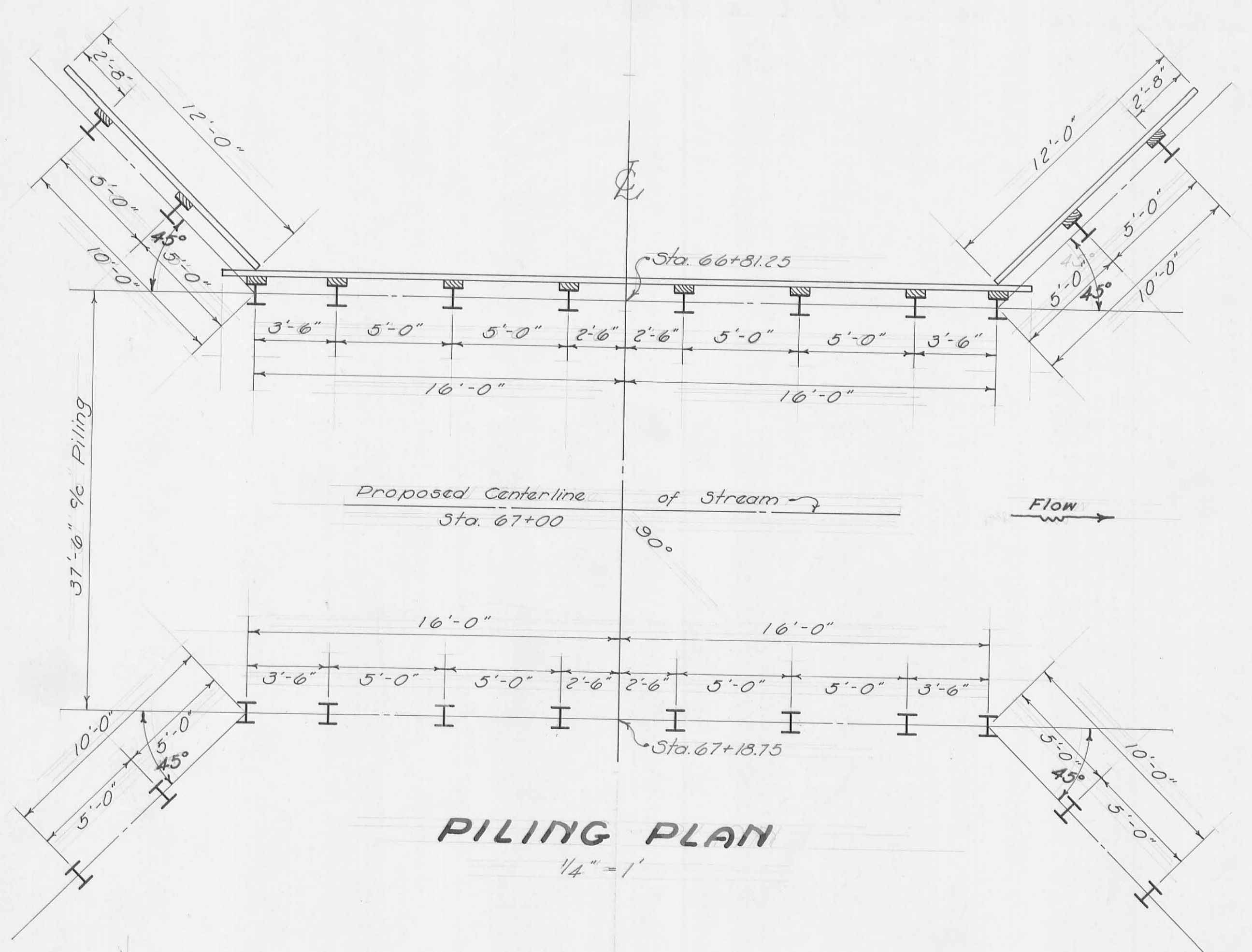
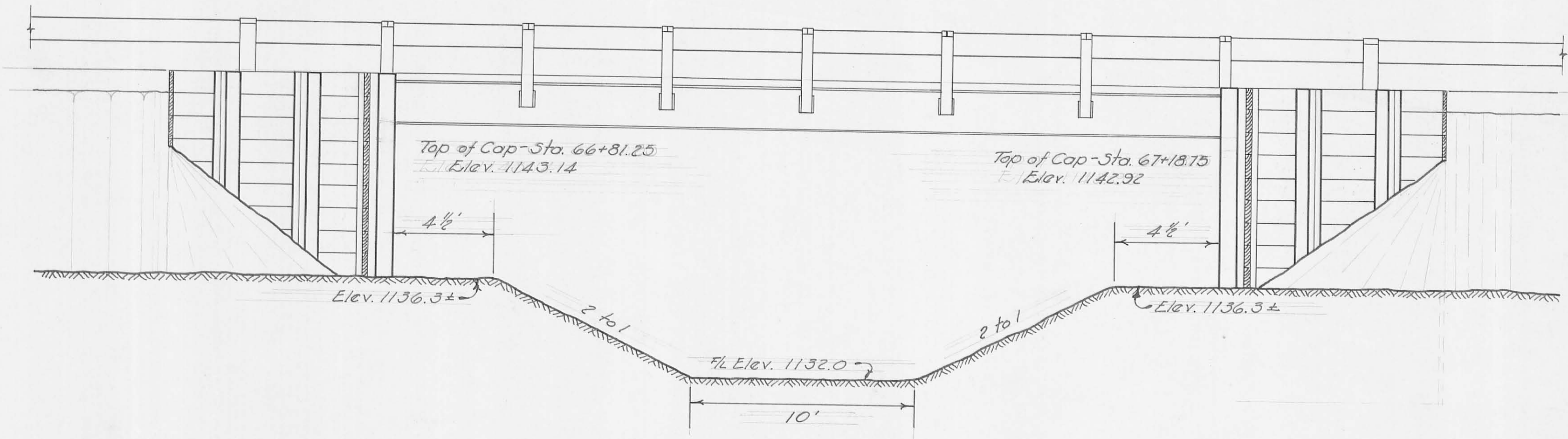


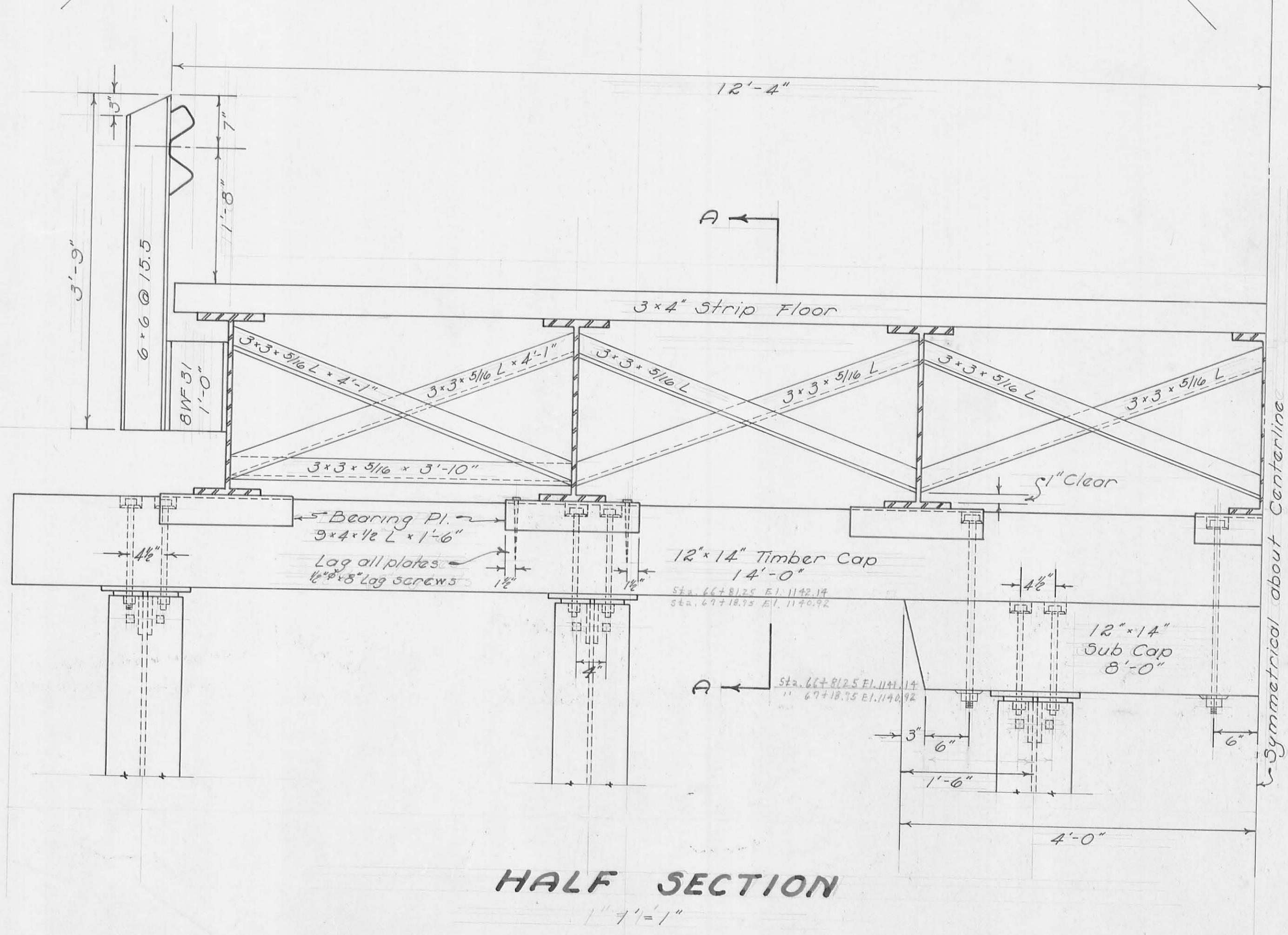
BR. 158 - I.30



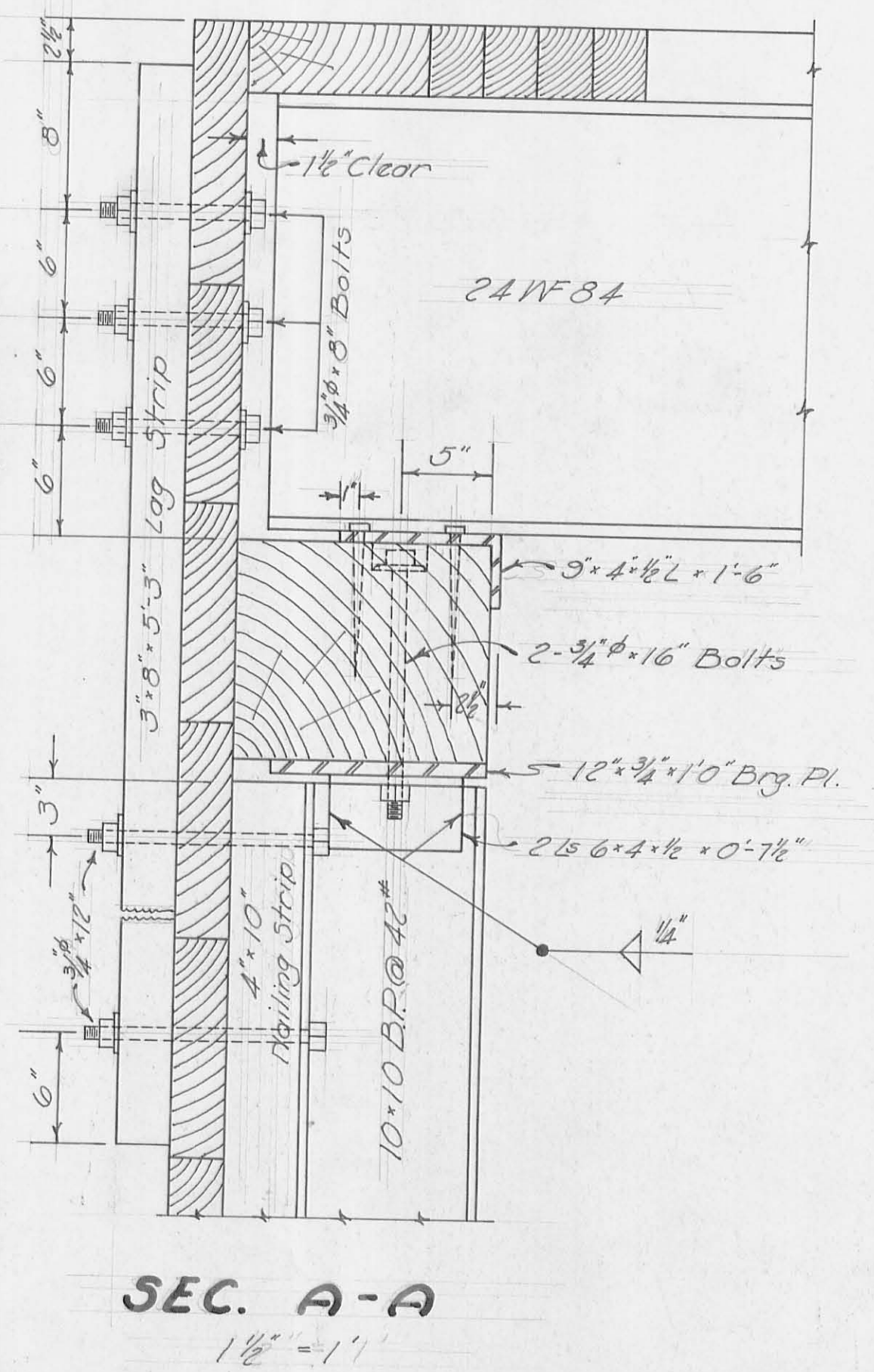
PILING PLAN  
1/4" = 1'



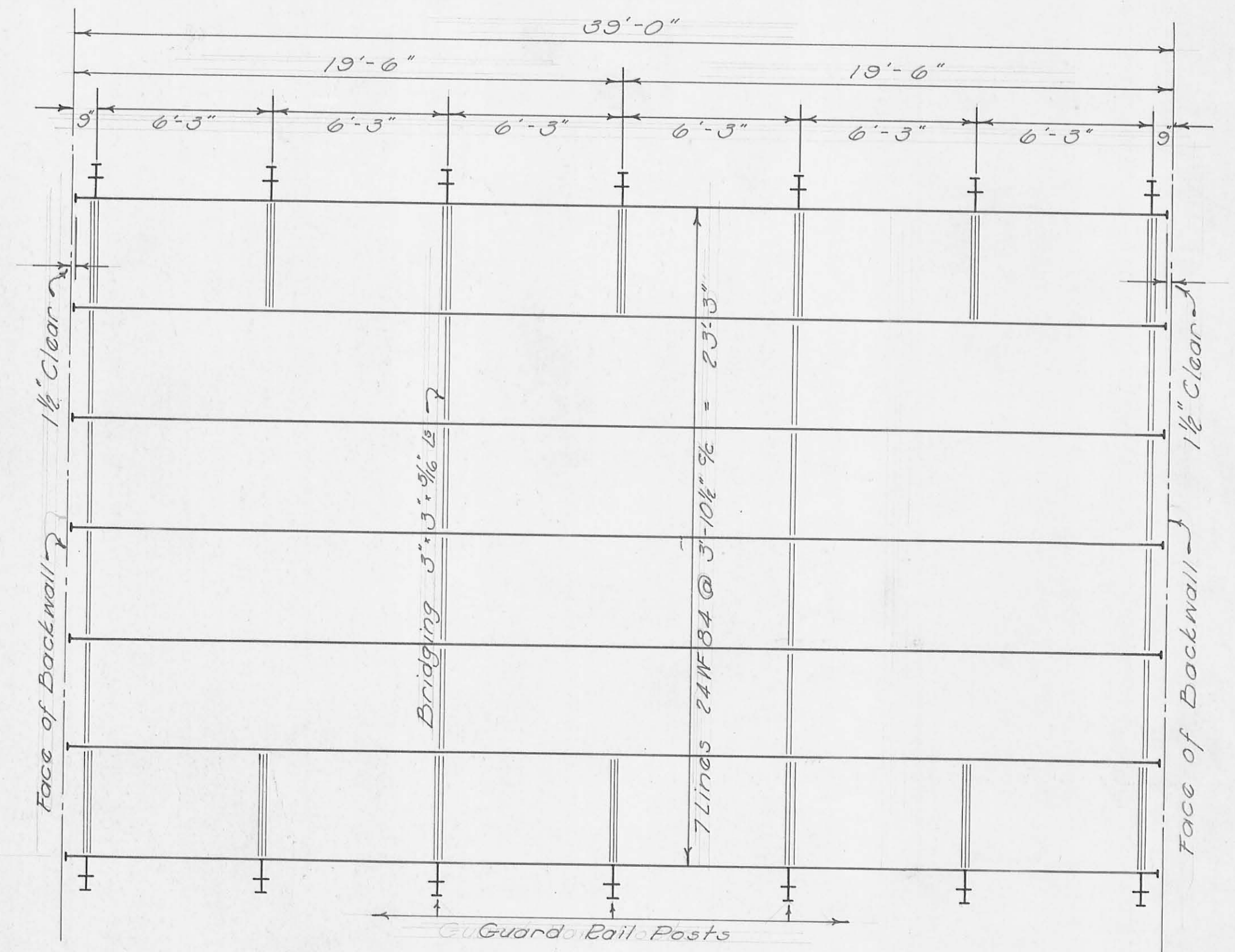
ELEVATION  
1/4" = 1'



HALF SECTION  
1/4" = 1'



SEC. A-A  
1/4" = 1'



STEEL FRAMING PLAN  
1/4" = 1'

Designed : D. L. Dodson  
Drawn : D. L. Dodson

BR. 158 - I.30

CONSTRUCTED June - July, 1963  
D.L.D.