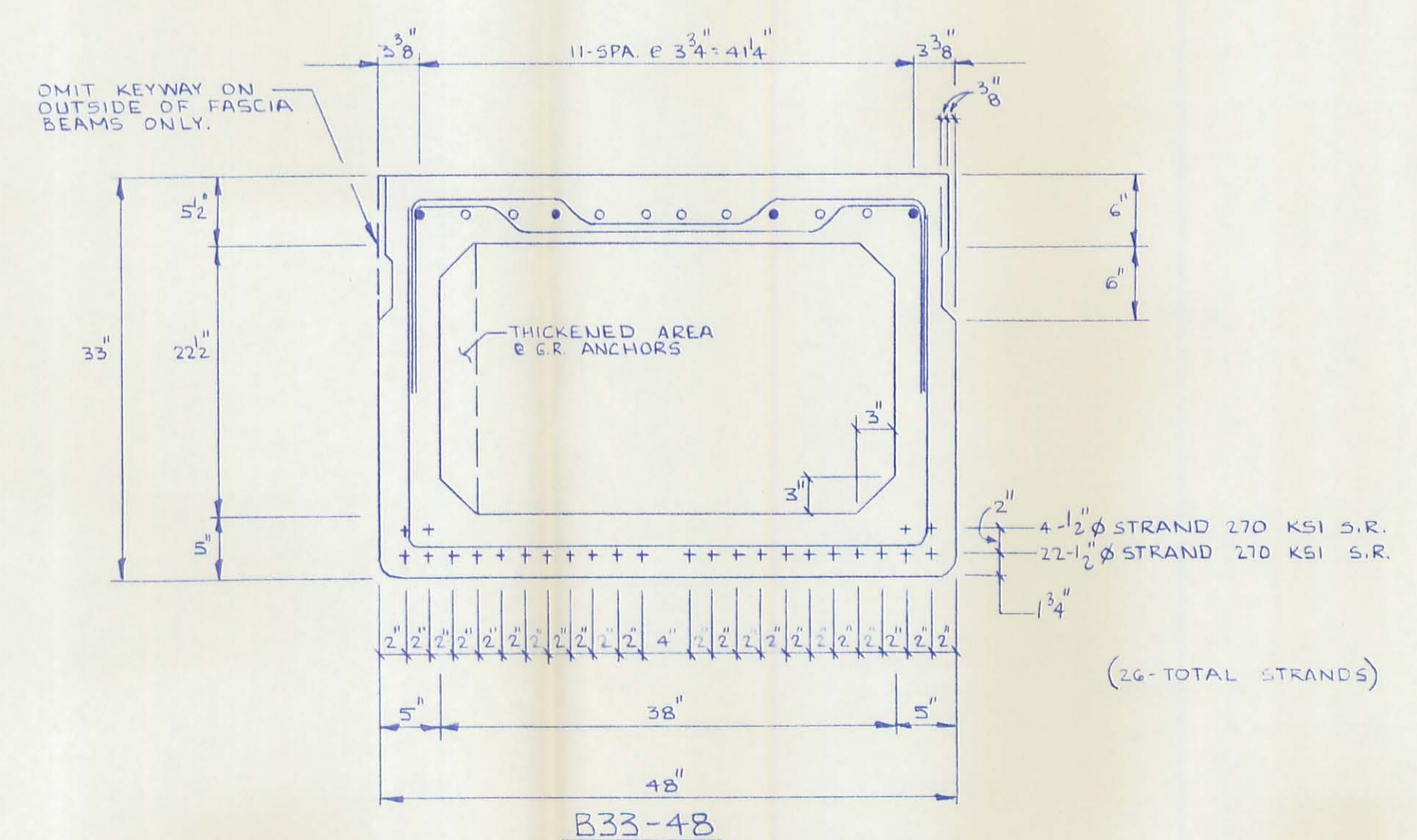


DECK PLAN



4-#5 BARS FULL LENGTH RUN MKB501 LAP MKB502.
 B-#5 ADDITIONAL BARS 11'-0" @ EACH END MKB503.

BILL OF MATERIALS				
NO.	ITEM	QTY/BEAM	NOTES	TOTAL
1	BEAM WEIGHT		73,000 #	
2	CONCRETE	16.8 CY.		100.8 CY.
3	CALCIUM NITRATE	67.2 GAL.	4 GAL./CY.	405.2 GAL.
4	STRAND	2600 LF	1/2" STRAND 270 KSI S.R.	15,600 LF.
5	RE-STEEL	1950 #	GRADE 40	11,100 #
6	VOID		22 1/2" X 38"	411 LF.
7	VOID DRAINS		3/4" NON FERROUS	48 EA.
8	TIE RODS 12'-0"		1" STEEL ROD	6 EA.
	8'-0"		1" STEEL ROD	3 EA.
9	TYPE B ANCHORS		UPI STD DETAILS	48 EA.
10	TYPE C ANCHORS		UPI STD DETAILS	24 EA.
11	TIE ROD SLEEVES			120 LF.
12	DOWELS & SLEEVES			12 EA.
13	SILANE			5 GAL.
14	JUTE			390 LF.
15	P.E.T.F.		1" X 3" X 4"	12.25 SF.
16	NON SHRINK ADD.			
17	BEARING PADS		1" X 3" X 18"	24 EA.
18	PAD SHIMS			10 SF.
19	GUARD RAIL POST		W6 X25 X 3'-11"	24 EA.

Approved by Cox 1-10-94

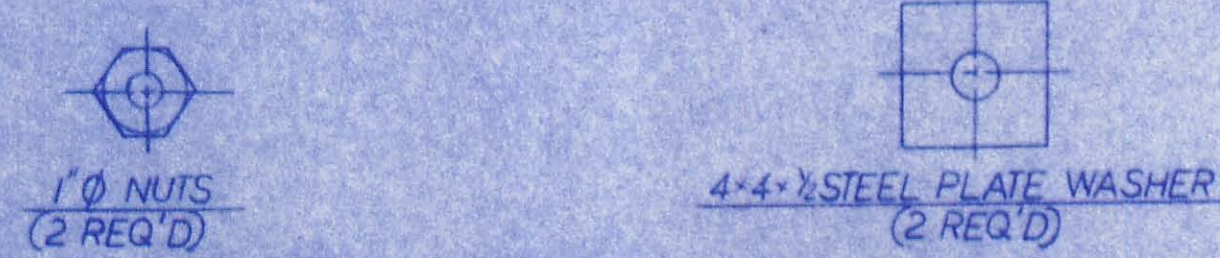
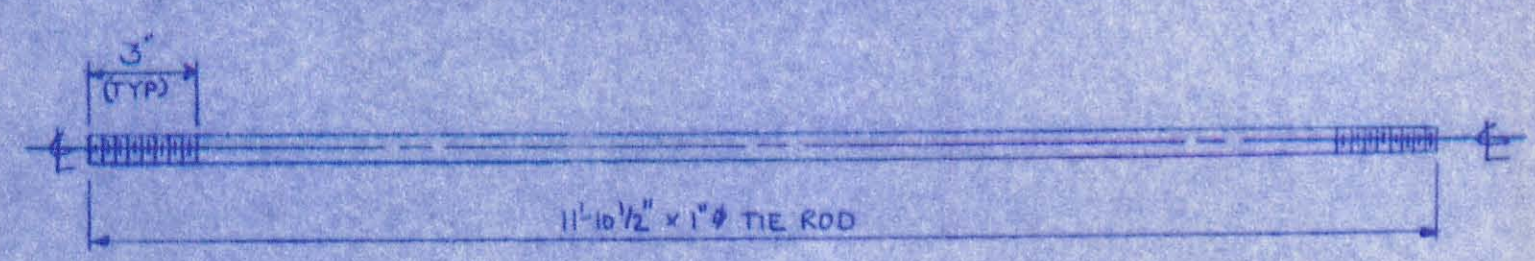
UNITED PRECAST INC.

PRESTRESSED BEAM DETAILS SCALE: --- DRAWN BY: PHIL REVISION: ---

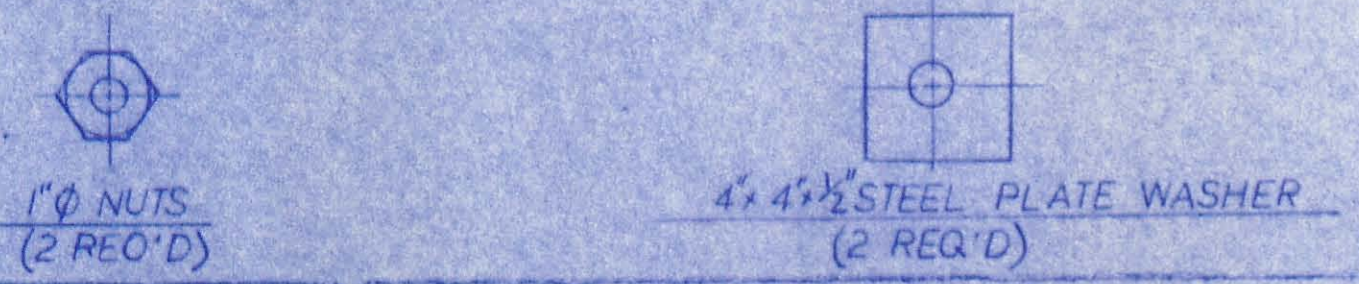
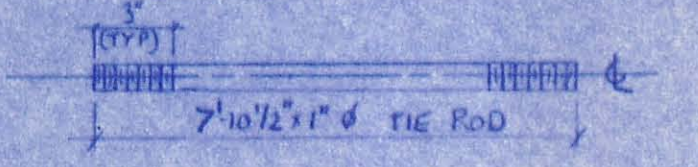
BRIDGE NO. LOG - TR 132-0.25
 LOGAN COUNTY

DATE: FEB '94 APPROVED BY: [Signature] DRAWING NUMBER: 1 OF 4

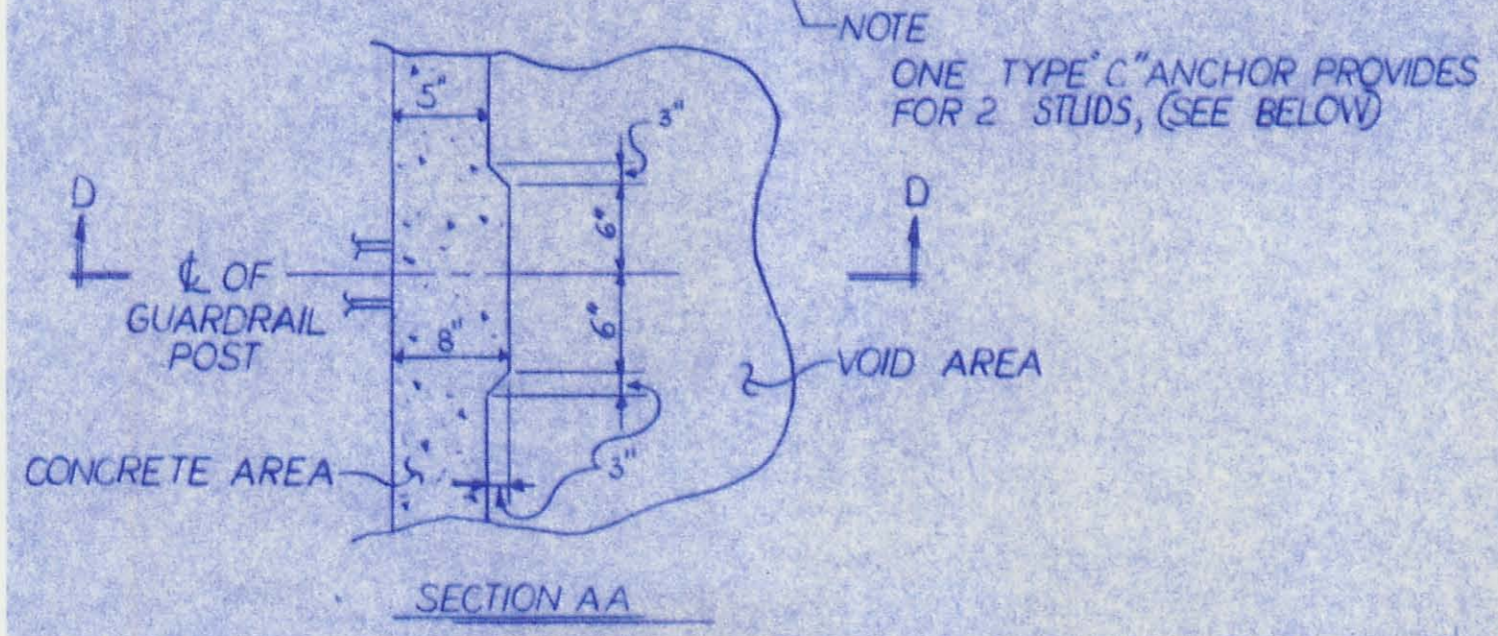
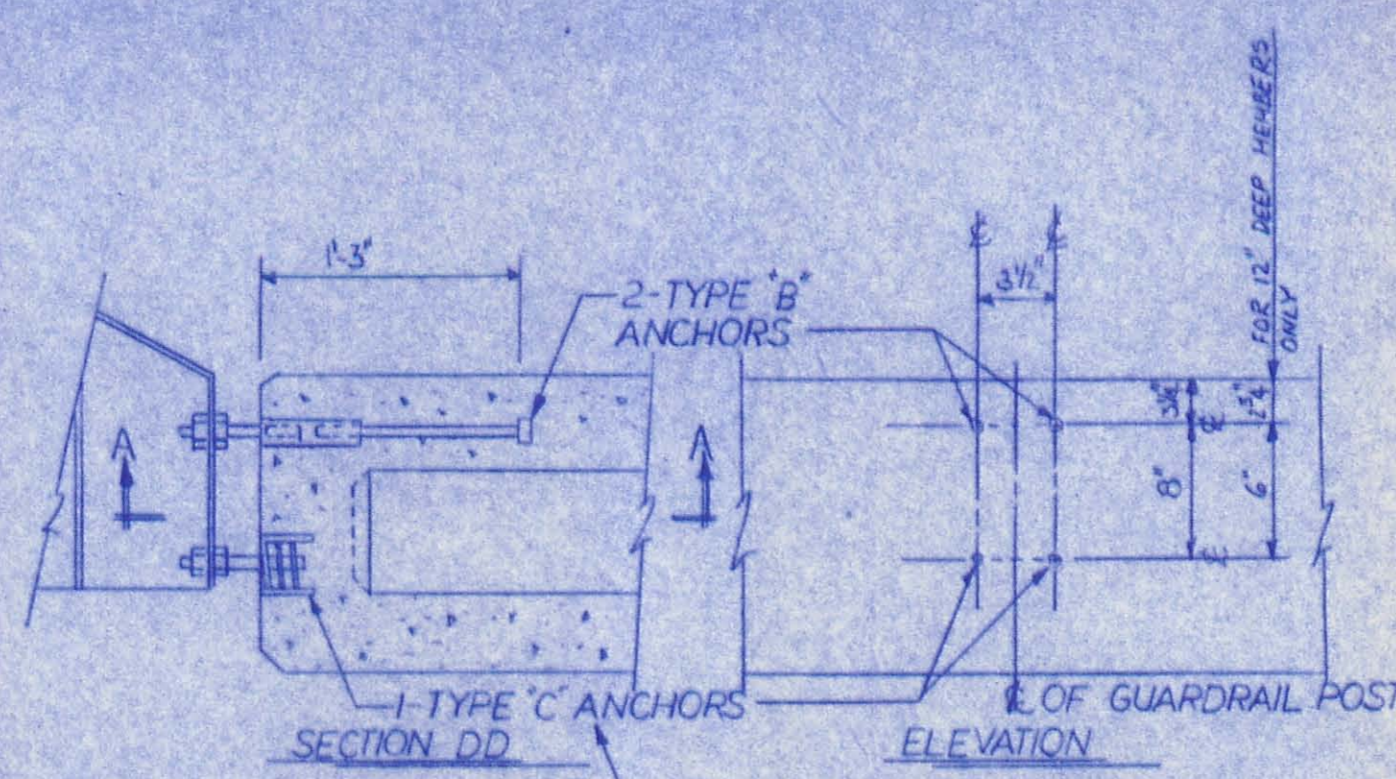
12'-0" TIE ROD ASSY



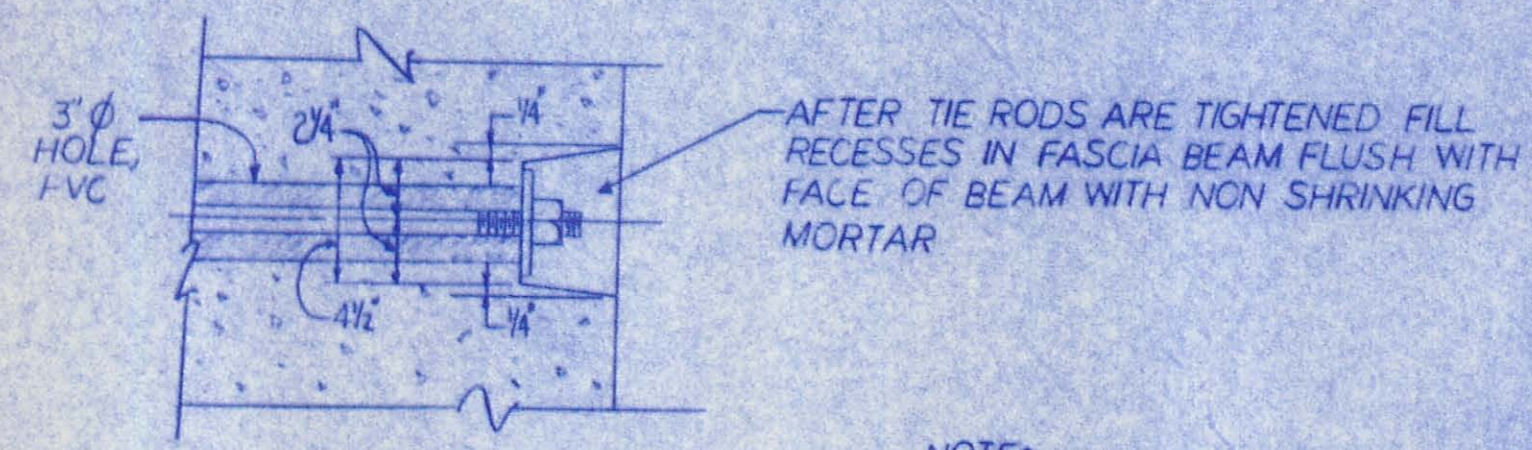
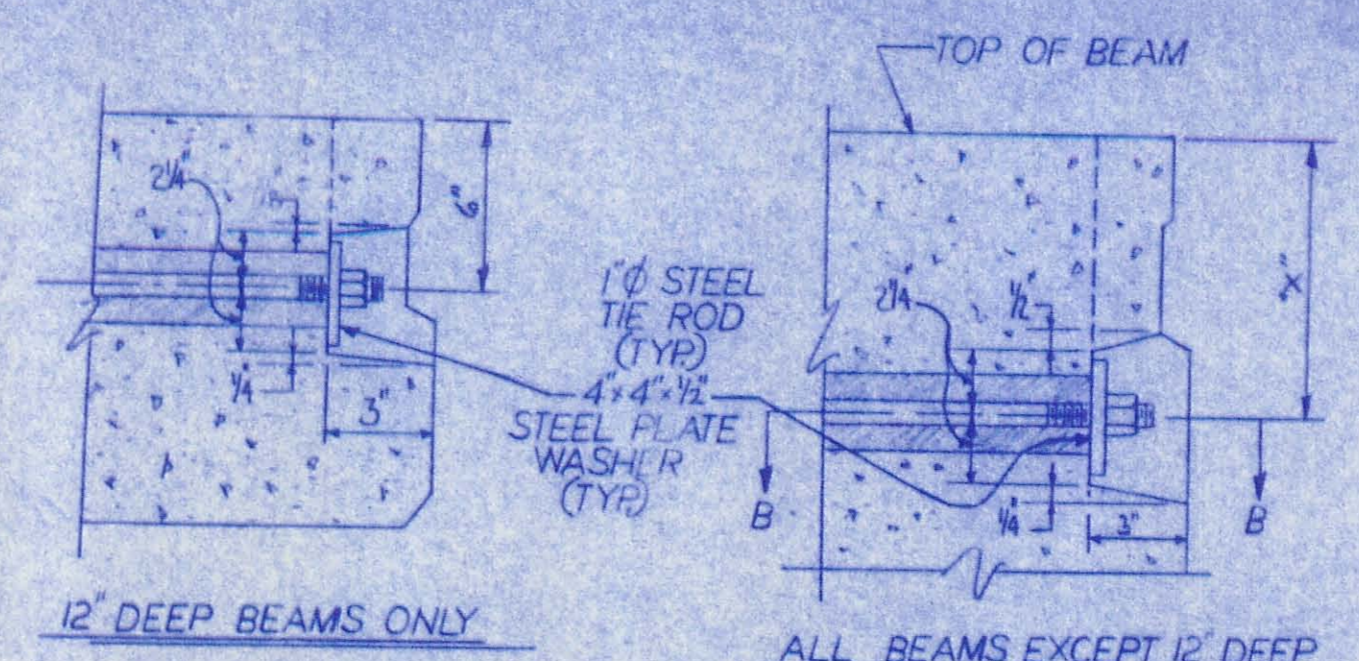
8'-0" TIE ROD ASSY



NOTE
ALL ITEMS INCLUDING TIE RODS & ACCESSORIES SHALL BE GALVANIZED IN ACCORDANCE WITH ASTM 123 OR 153. EXCEPT AS OTHERWISE NOTED

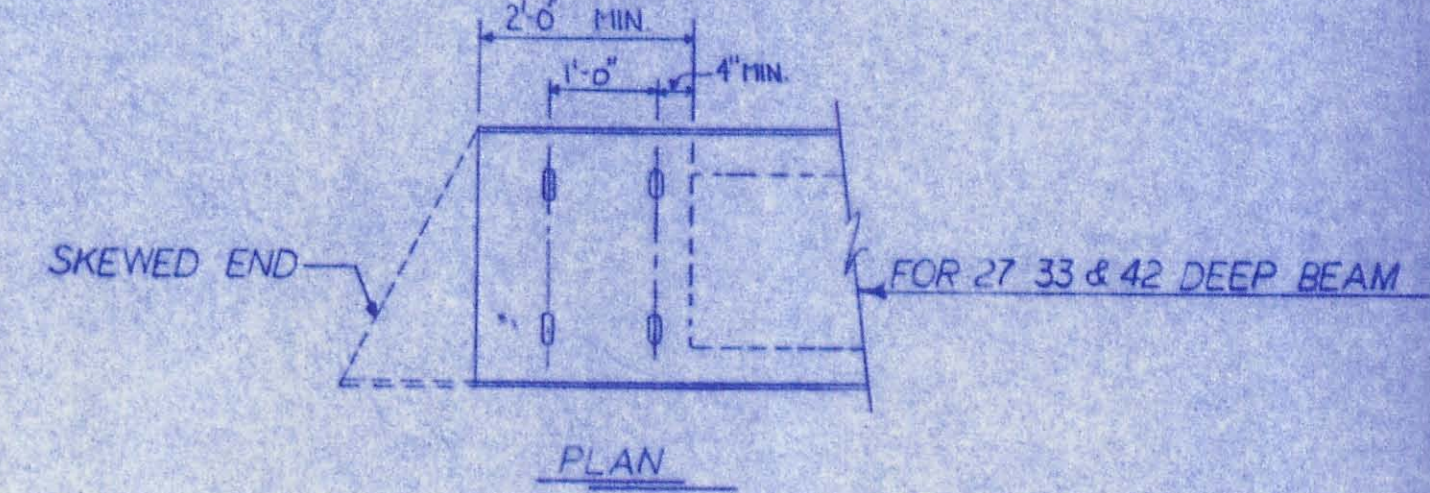
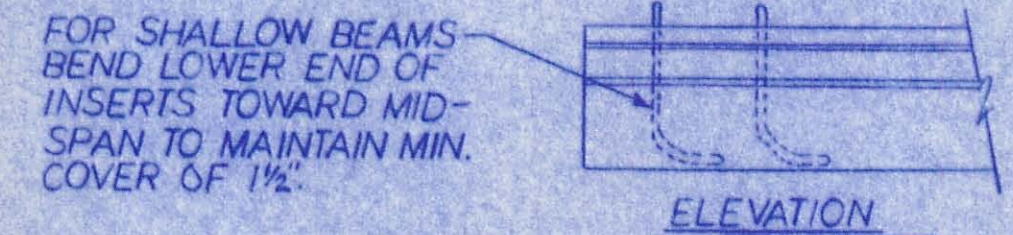
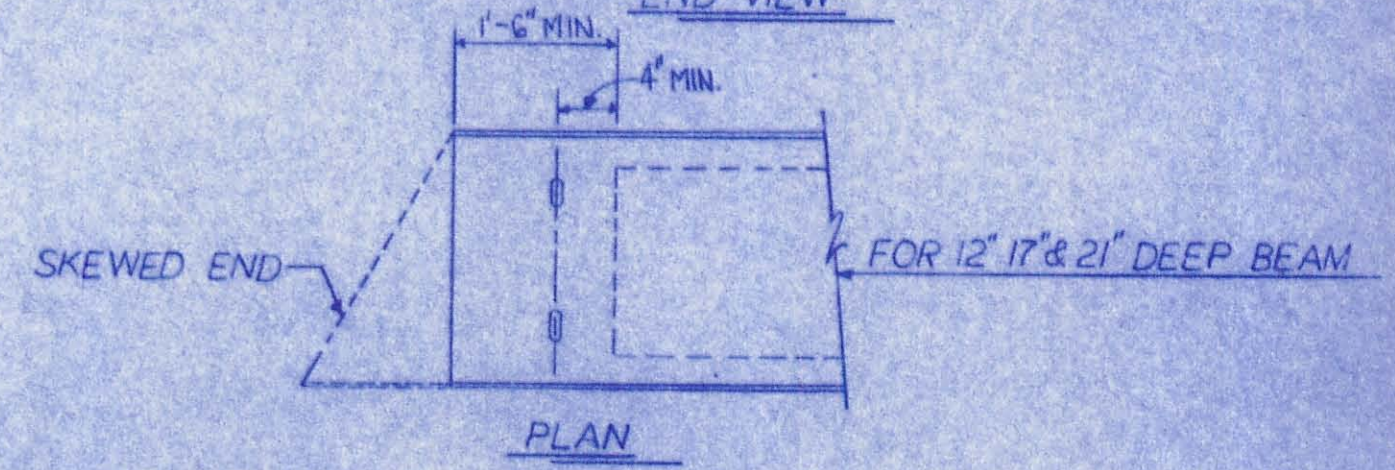
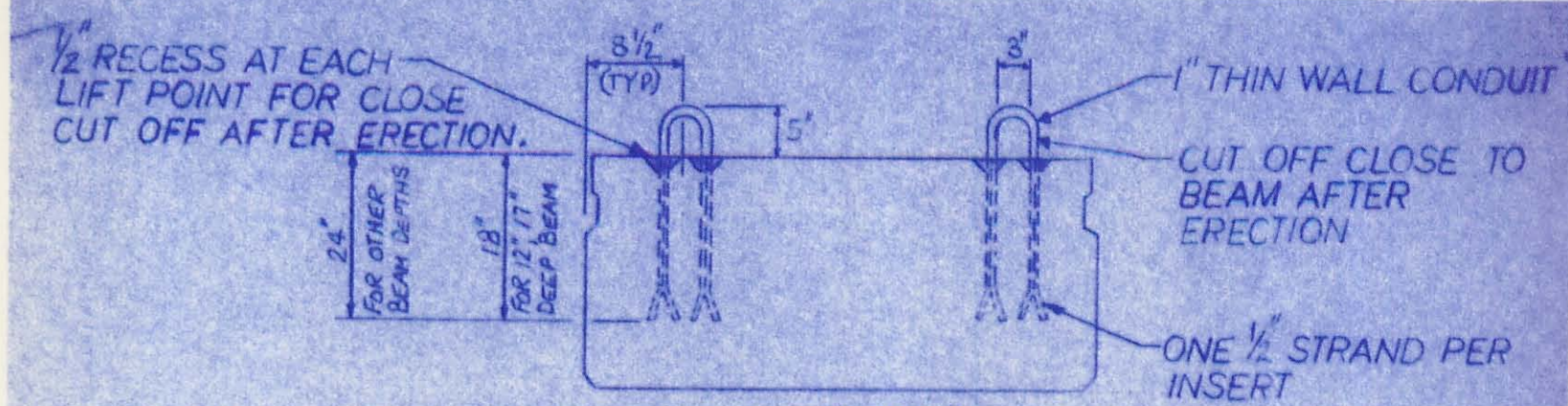


NOTE
TYPE B & C ANCHOR ASSEMBLIES SHALL CONFORM TO PHYSICAL PROPERTIES OF ASTM-A 325, EXCEPT MIN. ELONGATION SHALL BE 10%. THE CHEMICAL PROPERTIES ARE WAIVED.



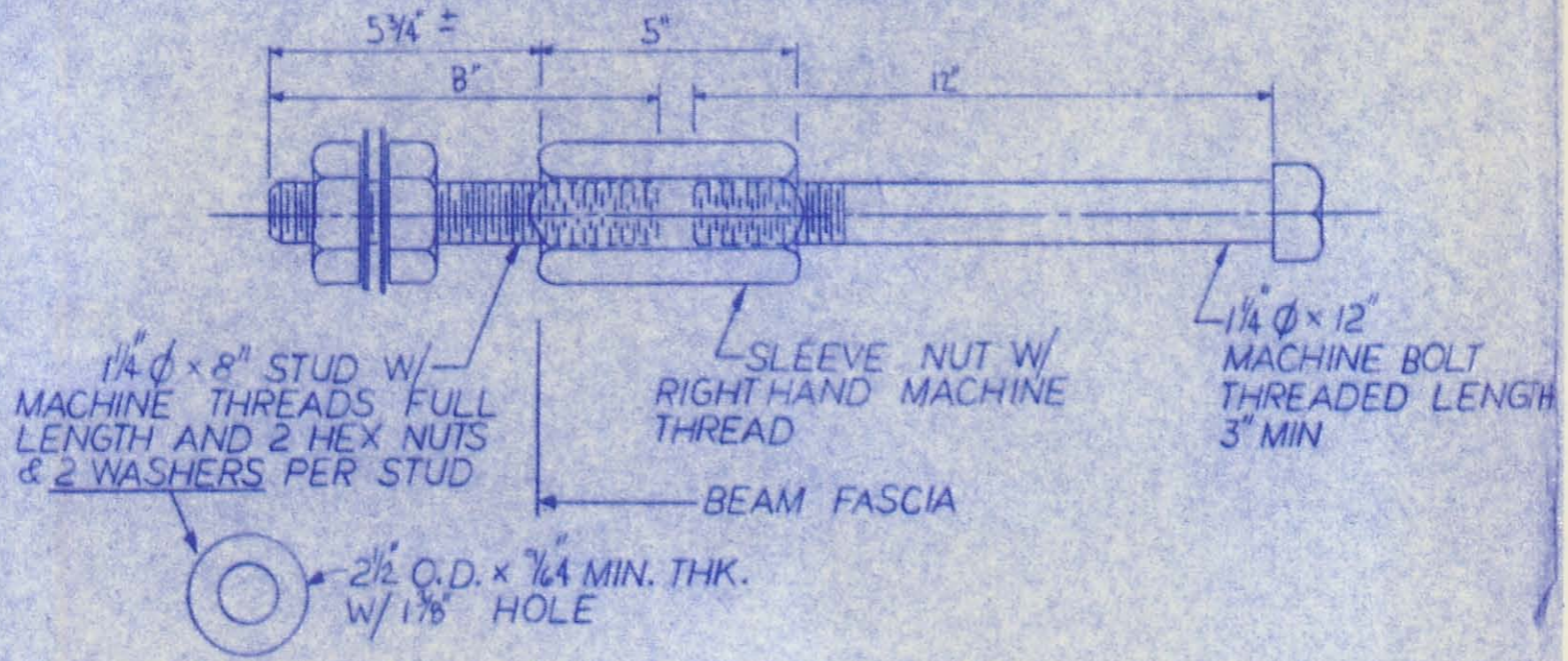
END DETAIL OF TRANSVERSE TIE ROD ANCHORAGE

- NOTES
- 1- PROVIDE A BURLAP DRAG FINISH ON TOP SURFACE OF BEAM SUITABLE FOR WATERPROOFING
 - 2- ADD DCI TO CONCRETE (4 GAL/CUBIC YARD)
 - 3- WATERPROOFING BEAM ENDS
 - 4- DETENSION STRAND SYMMETRICALLY ABOUT CENTERLINE

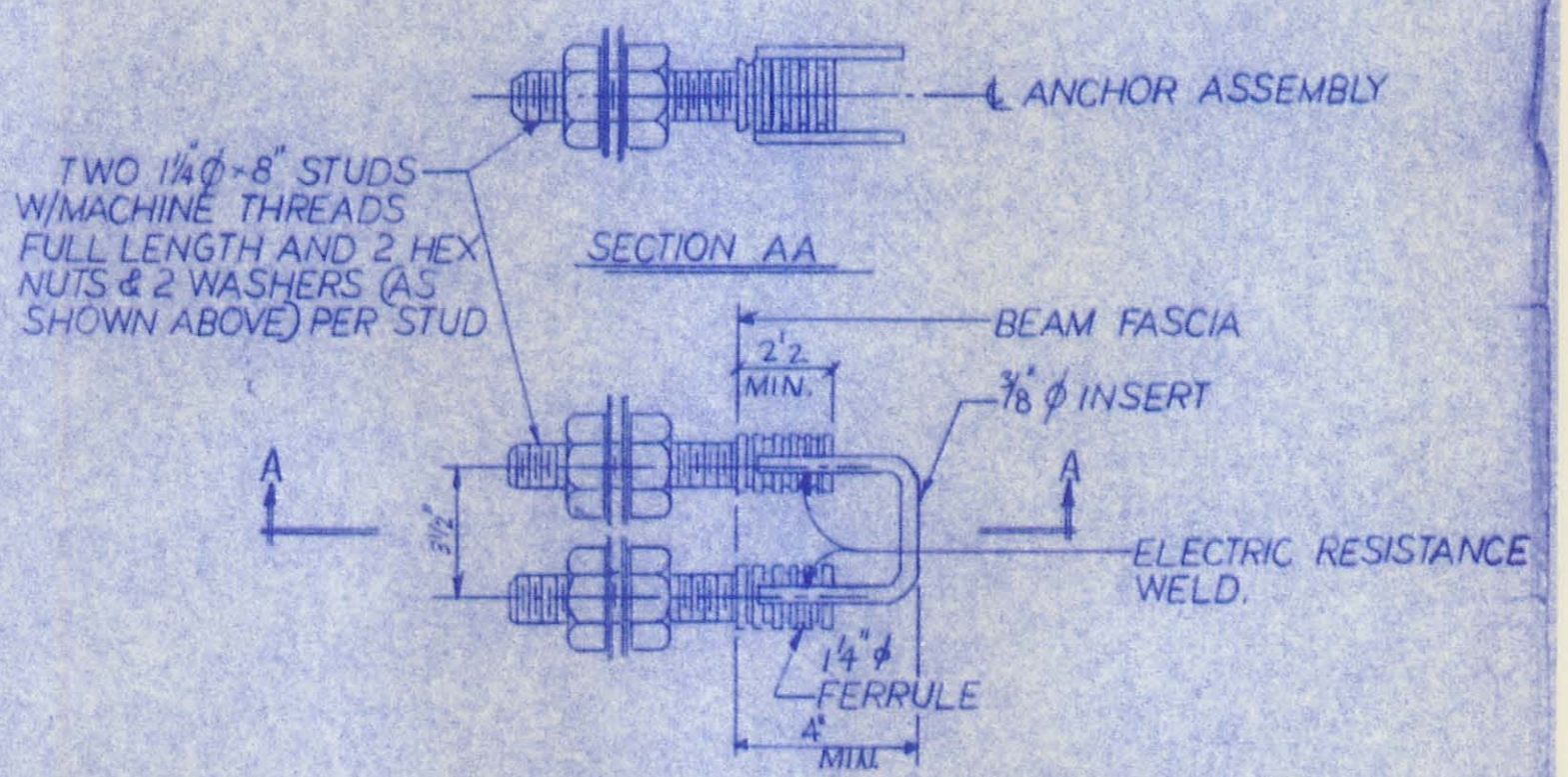


LIFTING INSERT DETAIL

TYPE 'B' ANCHOR

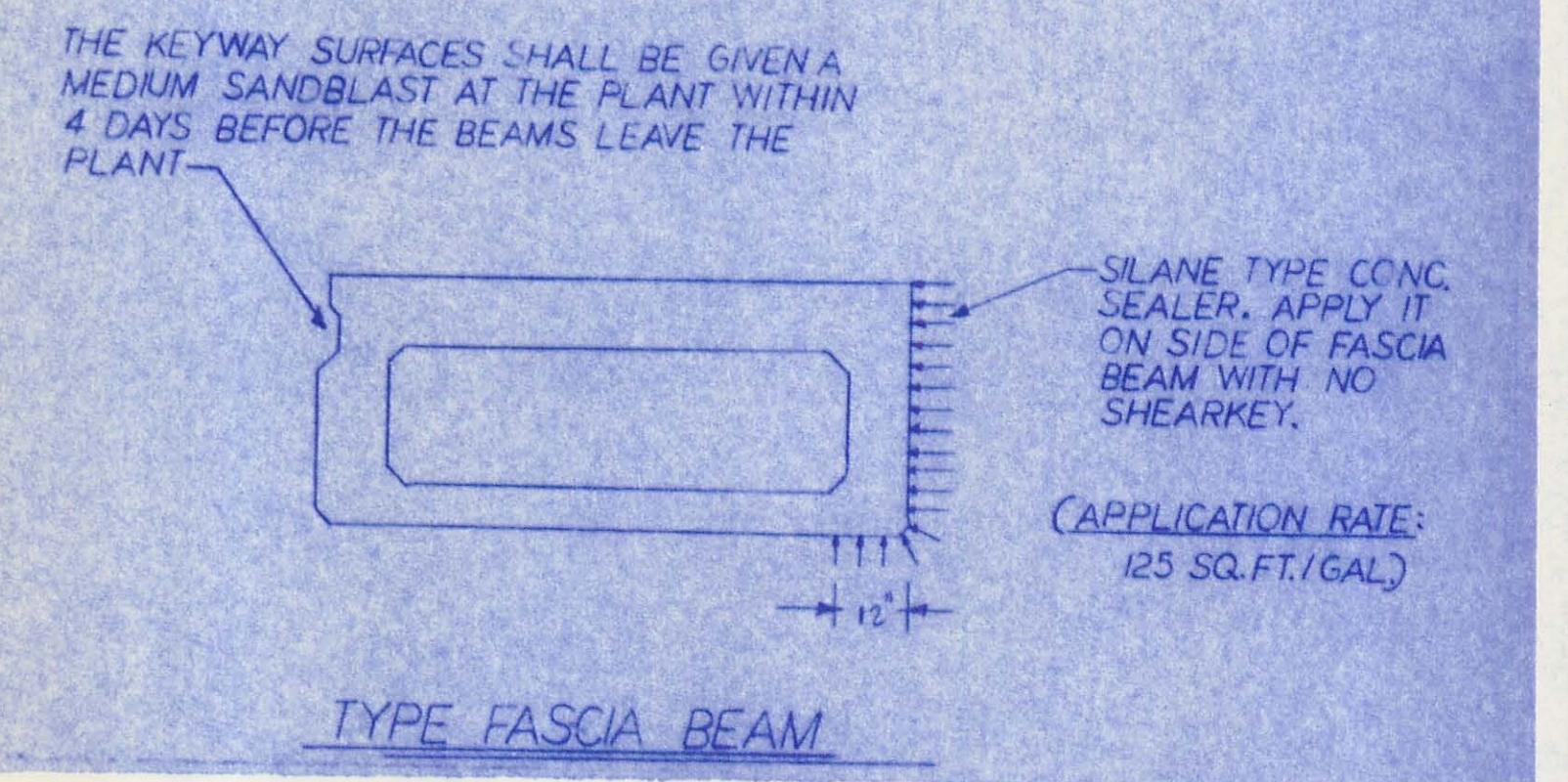


TYPE 'C' ANCHOR



'B' & 'C' ANCHOR DETAILS

- SPECIFICATIONS
- Design Loading: HS20-44 and the alternate military loading. Superimposed dead load 270 pounds per lineal ft.
- Concrete: Compressive strength, $f_c = 5500$ psi at 28 days (shipping). $f_c = 4000$ psi at release.
- Prestressing Steel: ASTM A-416 Grade 270, 1/2 inch diameter, seven wire, uncoated stress-relieved strand. $A_g = .153$ in.² $f_g = 270$ KSI Initial Stress $0.7 f_g = 189$ KSI
- Reinforcing Steel: ASTM A-615, A616, A617 GRADE 60 Unit Stress 60,000 PSI
ASTM A-615, A616, A617 GRADE 60 UNIT STRESS 24,000 PSI
- NOTE: GRADE 60 UNIT STRESS 24,000 PSI
1. Prestressed concrete beams and appurtenances conform to ODOT Standard Bridge Drawings PS80-1-81 sheets one, two, three, four.



TYPE FASCIA BEAM

BRIDGE NO. LOG-TR132-0-25		LOGAN COUNTY	
UNITED PRECAST INC.			
ROUNDHOUSE LANE MT. VERNON OHIO 43050	SCALE	DRAWN BY PHIL	REVISED
STANDARD BRIDGE DETAILS			
DATE FEB. 94	APPROVED BY ECC	DRAWING NUMBER 4 OF 4	