

BRIDGE No. 12-3.32
RUSHCREEK TOWNSHIP
LOGAN COUNTY, OHIO
1974

1
2

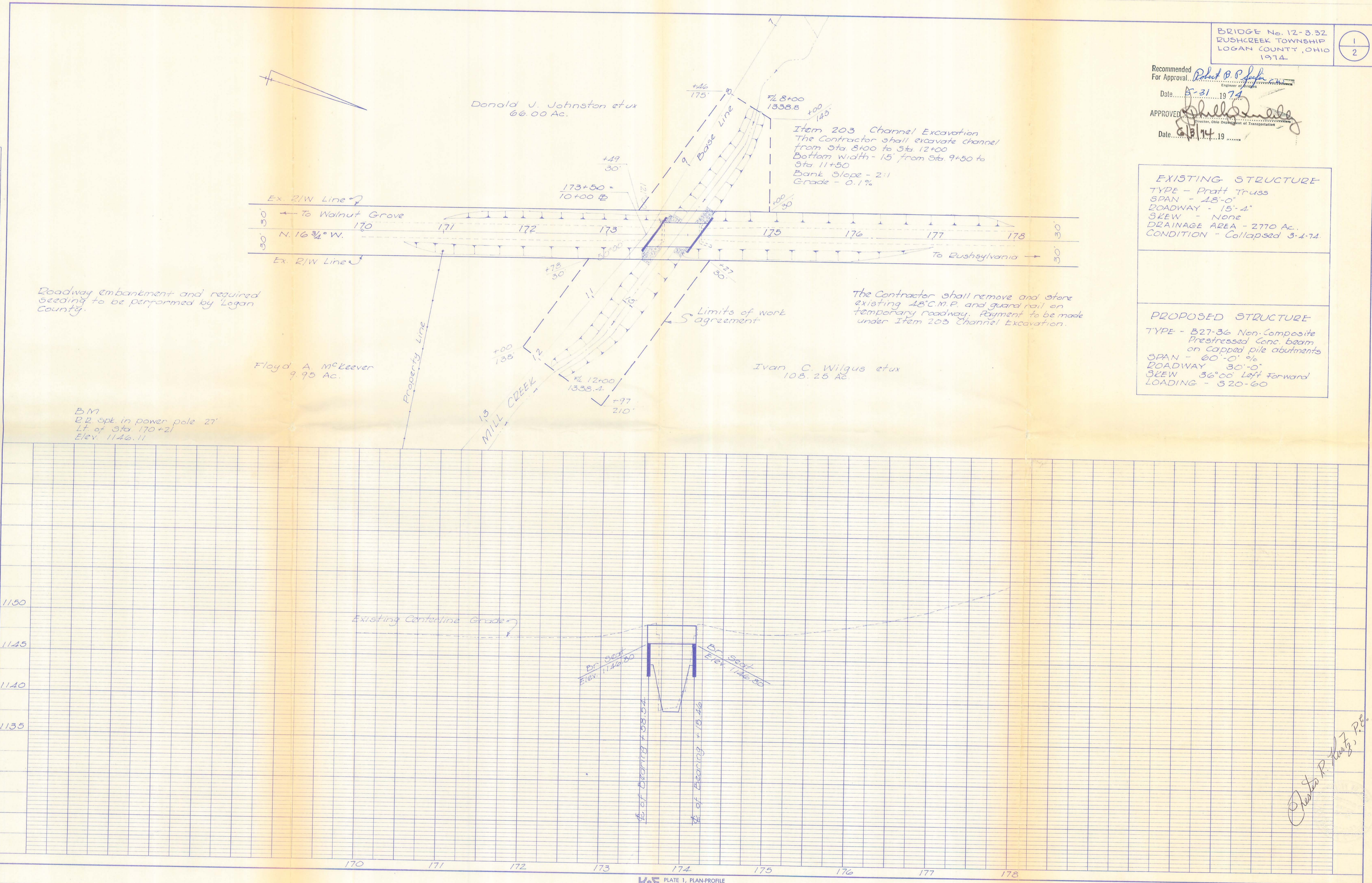
Recommended For Approval: *Robert P. Schultz*
Engineer of Bridges
Date: *5-31* 19 *74*
APPROVED: *Sheldon*
Director, Ohio Department of Transportation
Date: *6/11/74* 19 *74*

EXISTING STRUCTURE
TYPE - Pratt Truss
SPAN - 48'-0"
ROADWAY - 15'-4"
SKEW - None
DRAINAGE AREA - 2770 AC.
CONDITION - Collapsed 3-4-74

PROPOSED STRUCTURE
TYPE - B27-36 Non-Composite
Prestressed Conc. beam
on capped pile abutments
SPAN - 60'-0" @
ROADWAY - 30'-0"
SKEW - 36°00' Left Forward
LOADING - S20-60

PLAN
SURVEYED BY: *O.L.O.*
PLOTTED BY: *O.L.O.*
NOTE BOOK ALIGNMENT CHECKED: *O.L.O.*
RT. OF WAY CHECKED: *O.L.O.*
NO.:

PROFILE
SURVEYED BY: *O.L.O.*
PLOTTED BY: *O.L.O.*
NOTE BOOK GRADES CHECKED: *O.L.O.*
STRUCTURE (NOT IN CHARGE): *O.L.O.*
NO.:

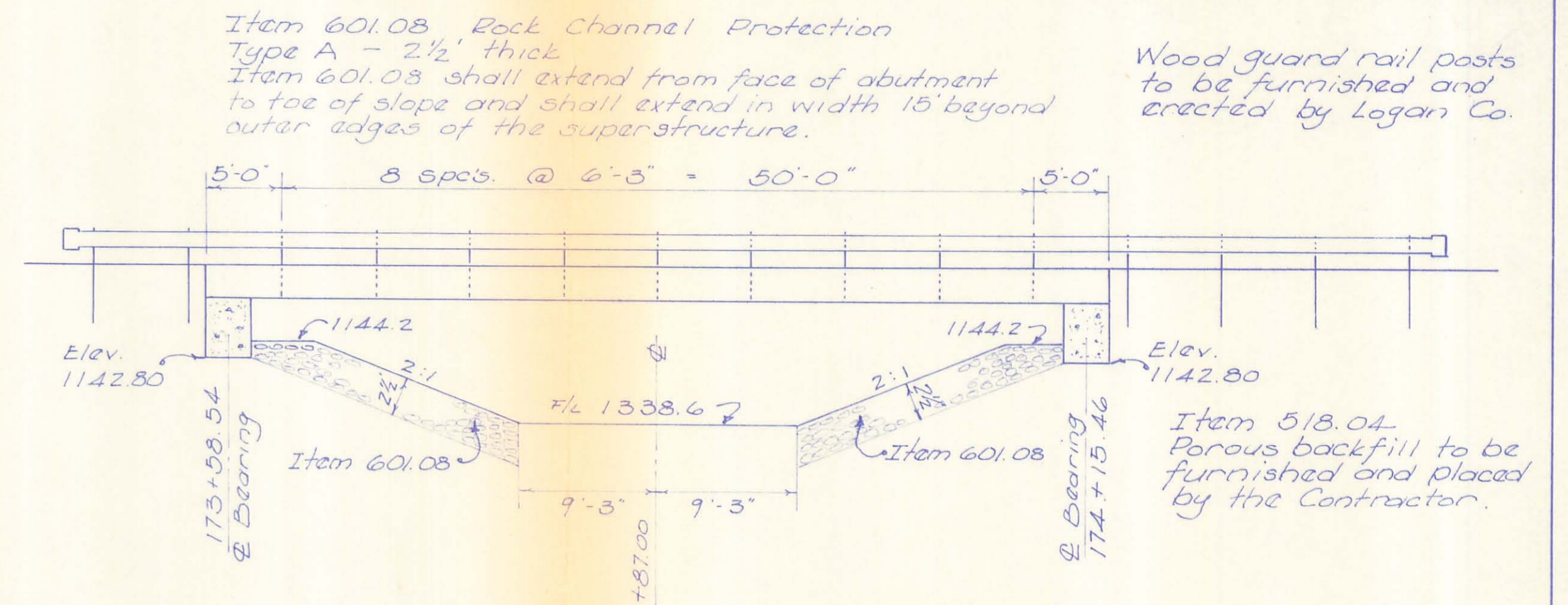
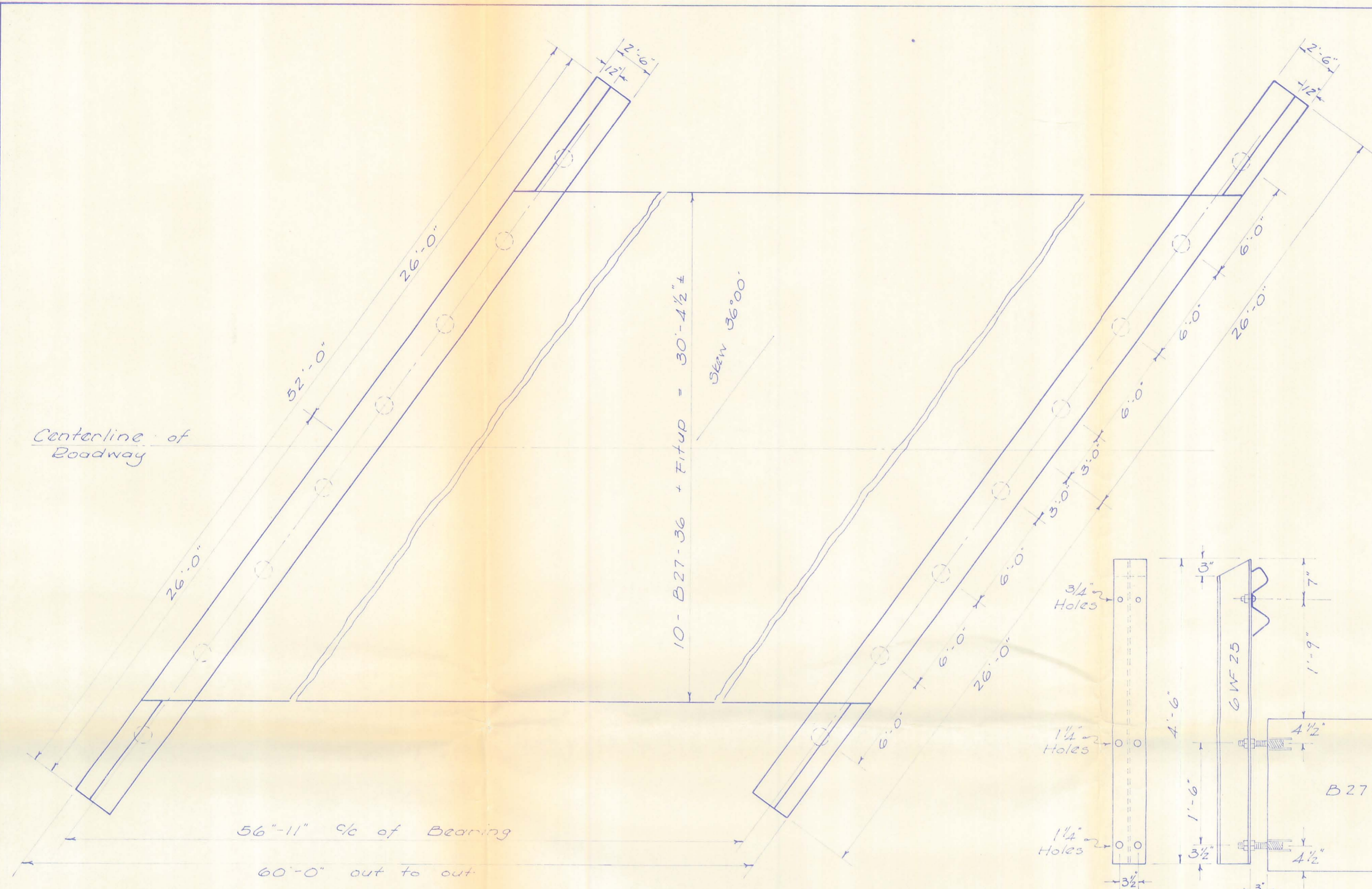


Roadway embankment and required seeding to be performed by Logan County.

Item 203 Channel Excavation
The Contractor shall excavate channel from Sta. 8+00 to Sta. 12+00
Bottom width - 15' from Sta. 9+50 to Sta. 11+50
Bank Slope - 2:1
Grade - 0.1%

The Contractor shall remove and store existing 48' C.M.P. and guard rail on temporary roadway. Payment to be made under Item 203 Channel Excavation.

Robert P. Schultz, P.E.



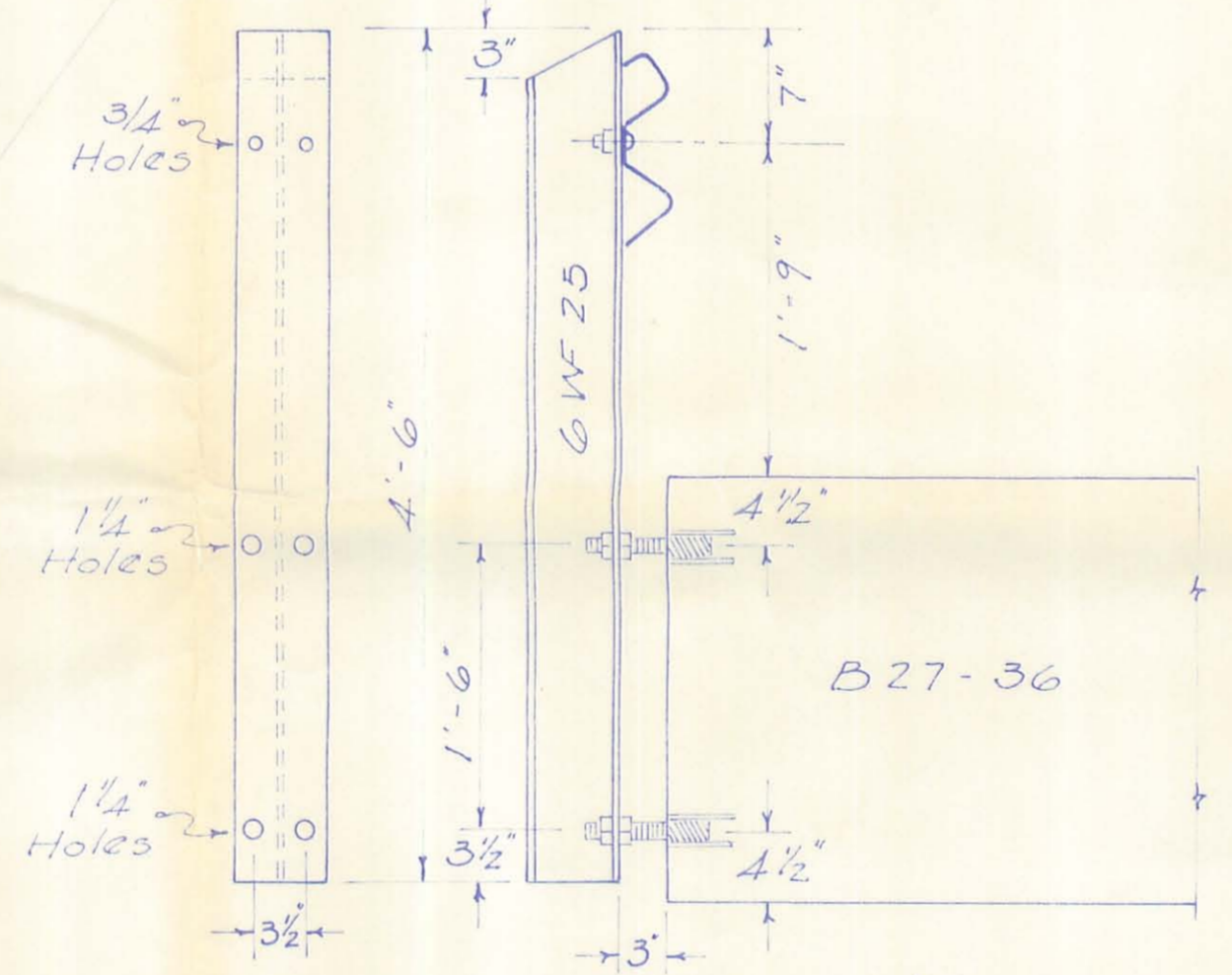
Item 601.08, Rock Channel Protection
 Type A - 2 1/2' thick
 Item 601.08 shall extend from face of abutment to toe of slope and shall extend in width 15' beyond outer edges of the superstructure.

Wood guard rail posts to be furnished and erected by Logan Co.

Item 518.04 Porous backfill to be furnished and placed by the Contractor.

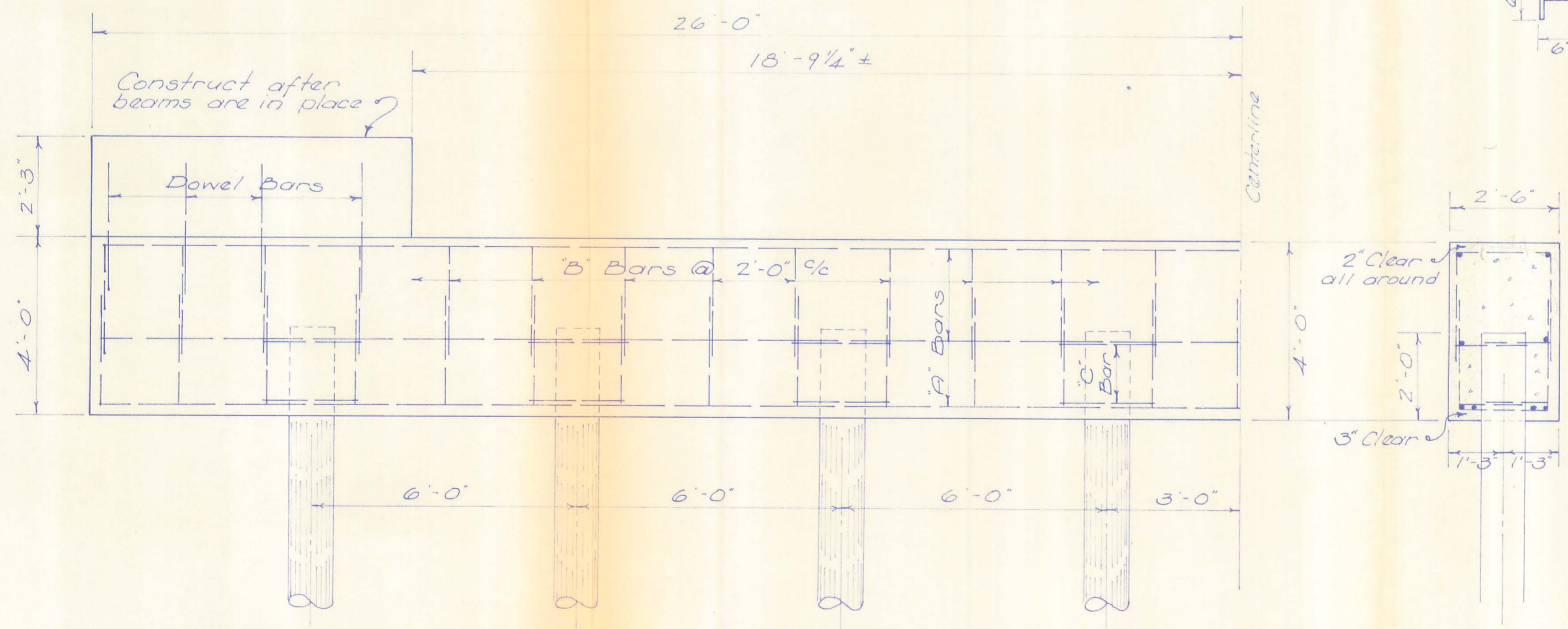
GENERAL NOTES

All work performed and all materials furnished shall be in accordance with State of Ohio, D.O.T. Construction and Material Specifications.
 Construction layout stakes will be provided by Logan County at no expense to the Contractor.
 The Contractor shall remove existing abutments to an elevation 1' below finished grade.
 All piling shall be 12" cast in place reinforced concrete. Estimated pay length - 30 feet. Drive all pile to min. 30 ton bearing.

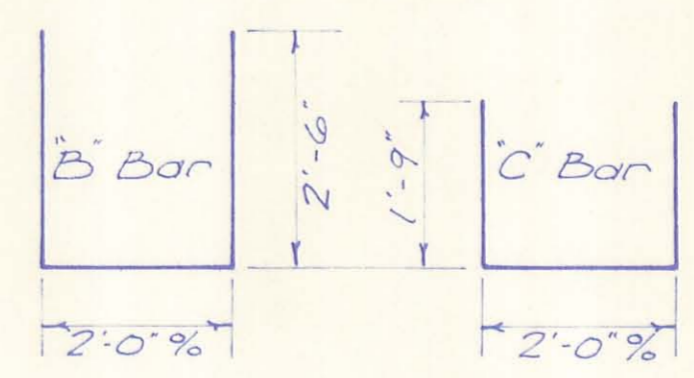


Item 710.15
 Guard rail posts shall be furnished and erected by the contractor. Guard rail to be furnished and erected by Logan County.

SUMMARY OF QUANTITIES			
Item No.	Description	Quantity	Unit
202	Abutments Removed	Lump	Sum
203	Channel Excavation	490	Cu. Yds.
503	Unclassified Excavation	200	Cu. Yds.
507	12" Cast in place reinforced Conc. Pile	480	Lin. Ft.
511	Class "C" Concrete, Abutments	40	Cu. Yds.
513	Reinforcing Steel	2118	Lbs.
515	B27-36 x 60'-0" Prestressed Conc. Beam	1800	Sq. Ft.
517	Steel Guard Rail Posts	18	Units
518	Porous Backfill	30	Cu. Yds.
601	Rock Channel Protection Type A	227	Cu. Yds.



STEEL LIST					
Bar	No. Pcs.	Size	Length	Weight	Shape
A	16	5/8"	51'-8"	862	Straight
A	16	5/8"	3'-0"	50	Straight (splice)
B	108	5/8"	7'-0"	789	Bent
C	64	5/8"	5'-6"	367	Bent
	16	5/8"	3'-0"	50	Straight (Dowel)



2/2

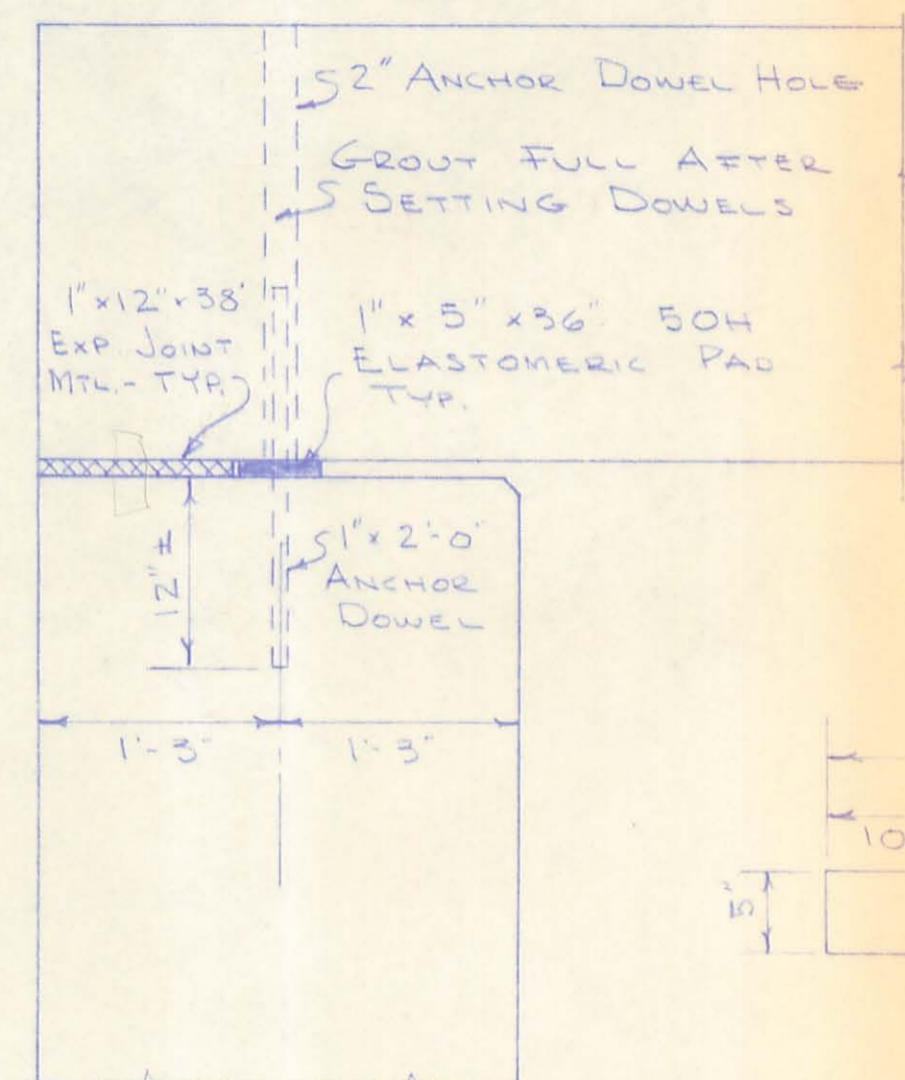
LOGAN COUNTY HIGHWAY DEPARTMENT
 CHESTER D. KURTZ COUNTY ENGINEER

Chester R. Kurtz, P.E.

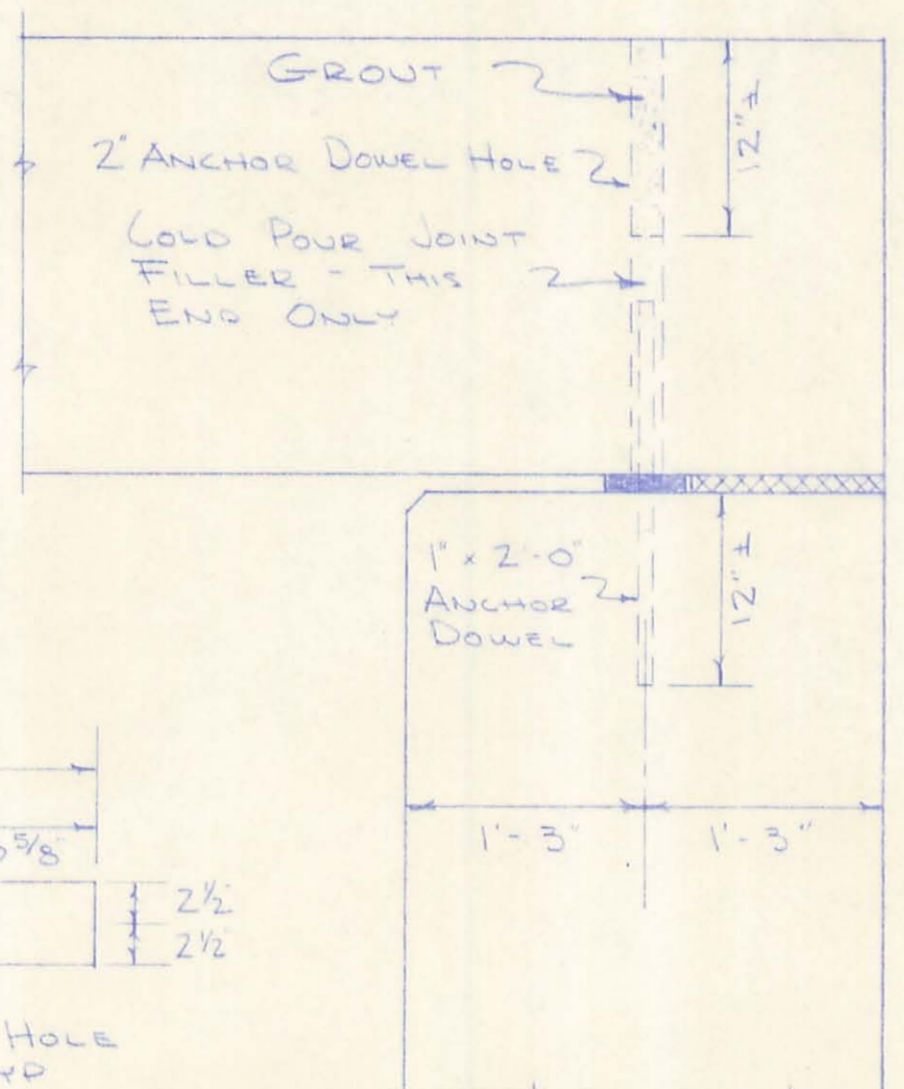
BRIDGE No. 12-3.32
 OVER
 MILL CREEK
 RUSHCREEK TOWNSHIP
 1974

LOADING 520-60

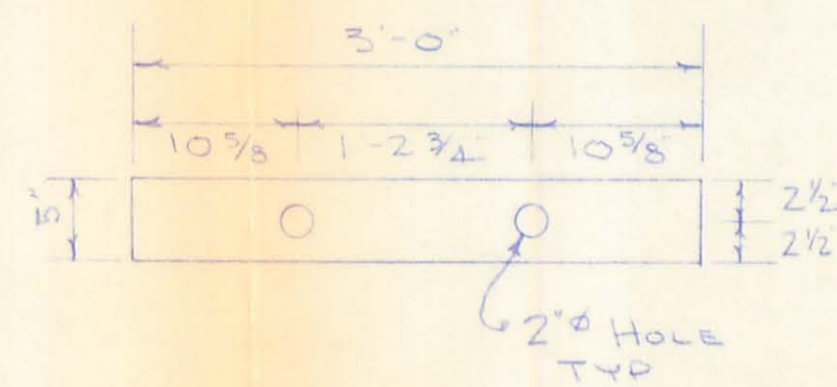
DESIGN D.L.D.	DRAWN D.L.D.	APPROVED C.R.K.	FILE No. 12-3.32 (74)
------------------	-----------------	--------------------	--------------------------



FIXED END

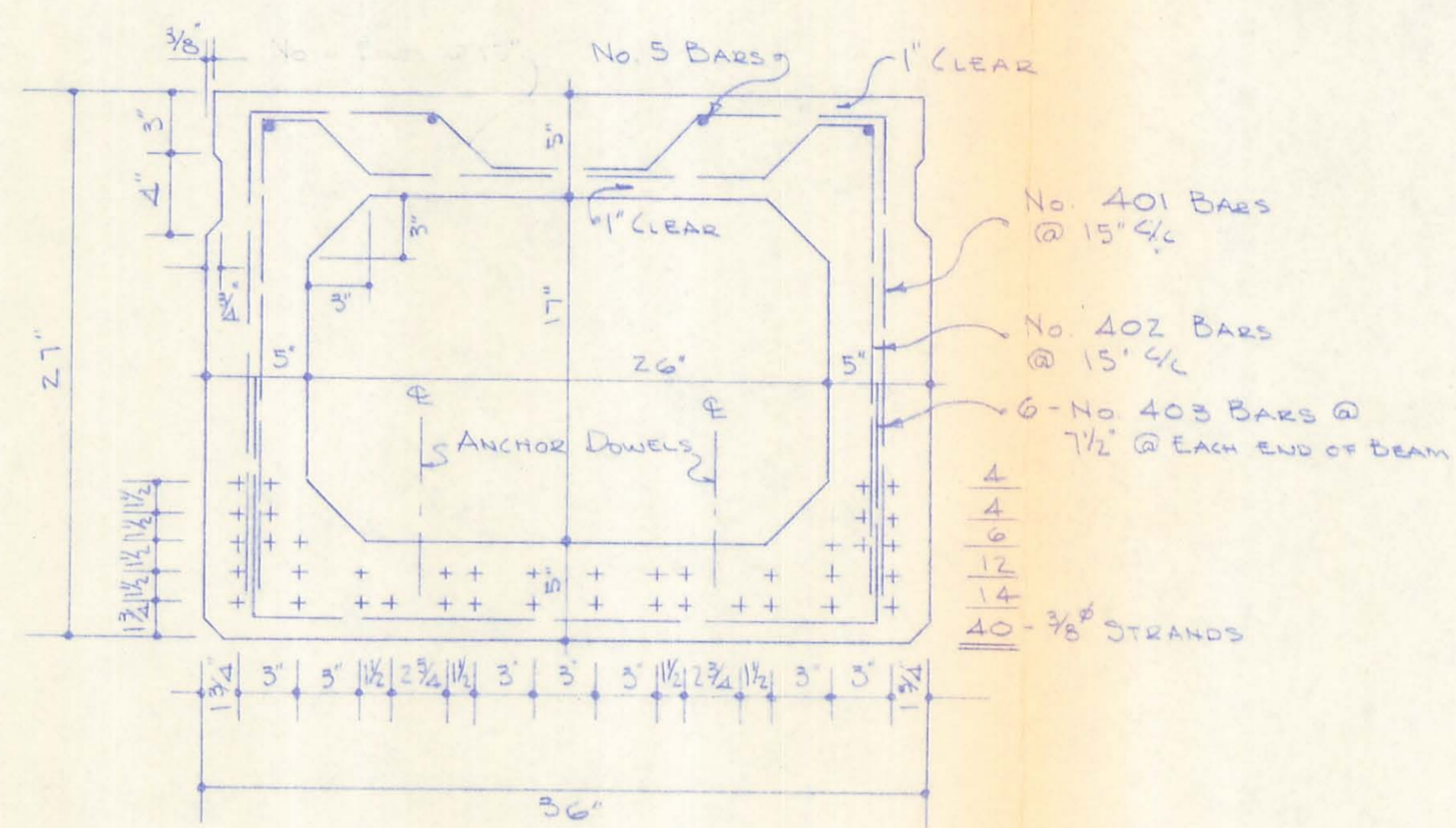


EXPANSION END



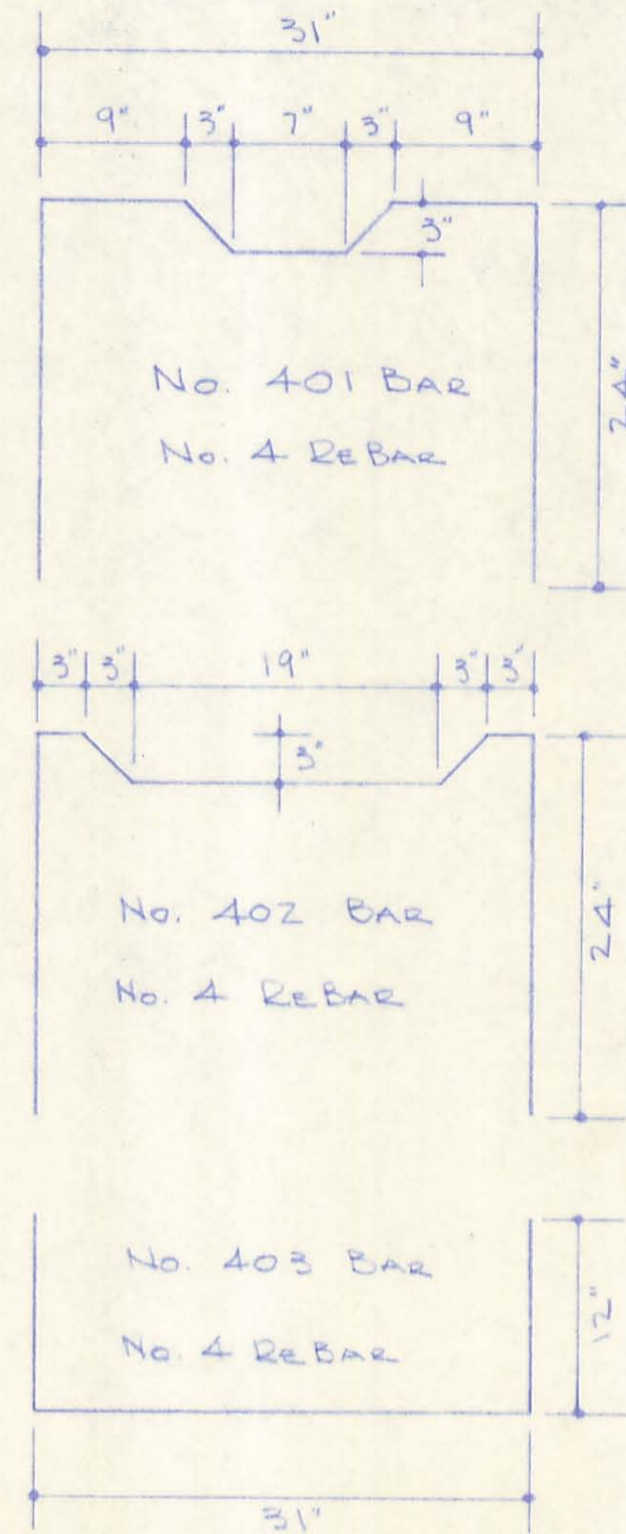
BEARING PAD DETAIL

BEARING DETAIL
1 1/2" = 1'-0"



TYPICAL SECTION
1 1/2" = 1'-0"

DESIGN LOADING - S20-60
 f'_c - 4000 PSI f'_c - 5500 PSI
 STRAND = 3/8" UNCOATED SEVEN WIRE
 STRESS-RELIEVED STRANDS WITH INITIAL
 TENSION OF 14000 POUNDS PER STRAND



LOGAN COUNTY HIGHWAY DEPARTMENT
 CHESTER R. KURTZ COUNTY ENGINEER

BRIDGE No. 12-3.32
 OVER
 MILL CREEK
 RUSHCREEK TOWNSHIP
 1974

LOADING S20-60

DESIGN	DRAWN	FILE No
C.R.K.	D.L.D.	12-3.32 (74)

Chester R. Kurtz P.E.